

# Weekly SLA Customer Report

Customer JWR Production  
Database ID 43



=====  
HARDDISK USAGE JWR\_PRD\_JWR-ABS-01  
=====

	Used disk space on / (GB)	Total disk space on / (GB)	Free disk space on / (GB)
10-1-2015	27	49	20
9-1-2015	27	49	20
8-1-2015	27	49	20
7-1-2015	27	49	20
6-1-2015	27	49	20
5-1-2015	27	49	20
4-1-2015	27	49	20

=====  
HARDDISK USAGE JWR\_PRD\_JWR-ABS-02  
=====

	Used disk space on / (GB)	Total disk space on / (GB)	Free disk space on / (GB)
10-1-2015	27	49	20
9-1-2015	27	49	20
8-1-2015	27	49	20
7-1-2015	27	49	20
6-1-2015	27	49	20
5-1-2015	27	49	20
4-1-2015	27	49	20

## Weekly SLA Customer Report

Customer      JWR Production  
 Database ID    43



=====

HARDDISK USAGE    JWR\_PRD\_JWR-ODB-01

=====

	Used disk space on / (GB)	Total disk space on / (GB)	Free disk space on / (GB)
10-1-2015	75	90	10
9-1-2015	76	90	9
8-1-2015	77	90	9
7-1-2015	77	90	9
6-1-2015	75	90	10
5-1-2015	76	90	10
4-1-2015	75	90	10

=====

HARDDISK USAGE    JWR\_PRD\_JWR-ODB-02

=====

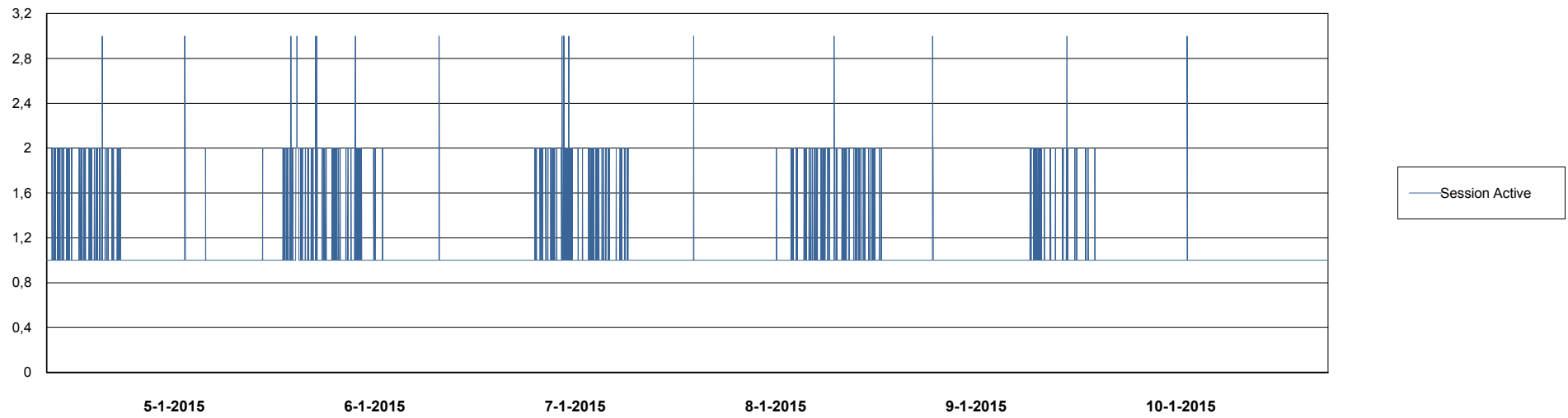
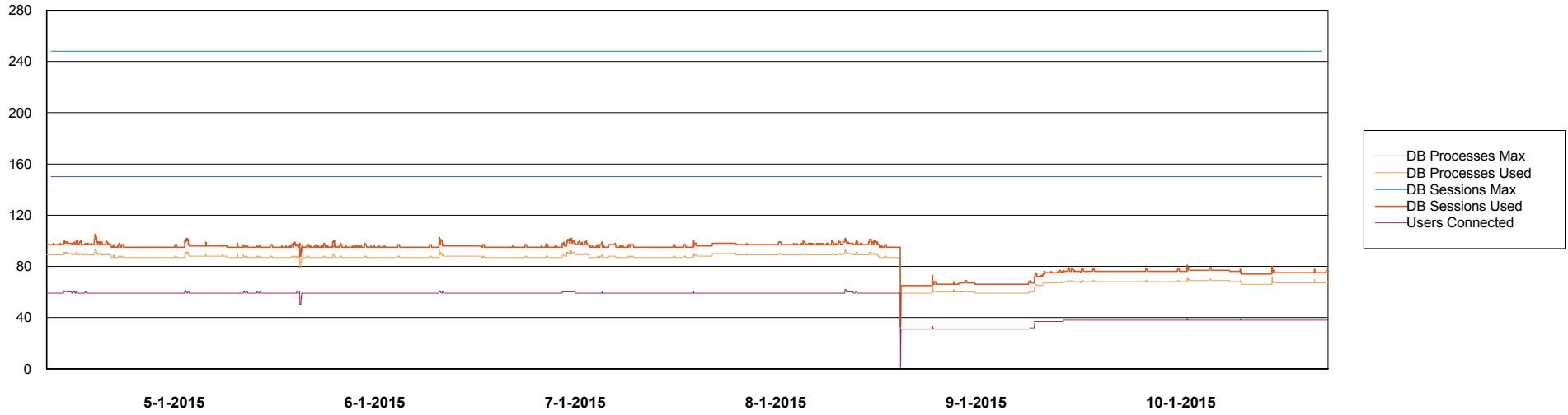
	Used disk space on / (GB)	Total disk space on / (GB)	Free disk space on / (GB)
10-1-2015	93	138	38
9-1-2015	93	138	38
8-1-2015	93	138	38
7-1-2015	92	138	39
6-1-2015	91	138	40
5-1-2015	91	138	40
4-1-2015	90	138	40

# Weekly SLA Customer Report

Customer JWR Production  
Database ID 43



DATABASE PERFORMANCE JWRDB\_Production



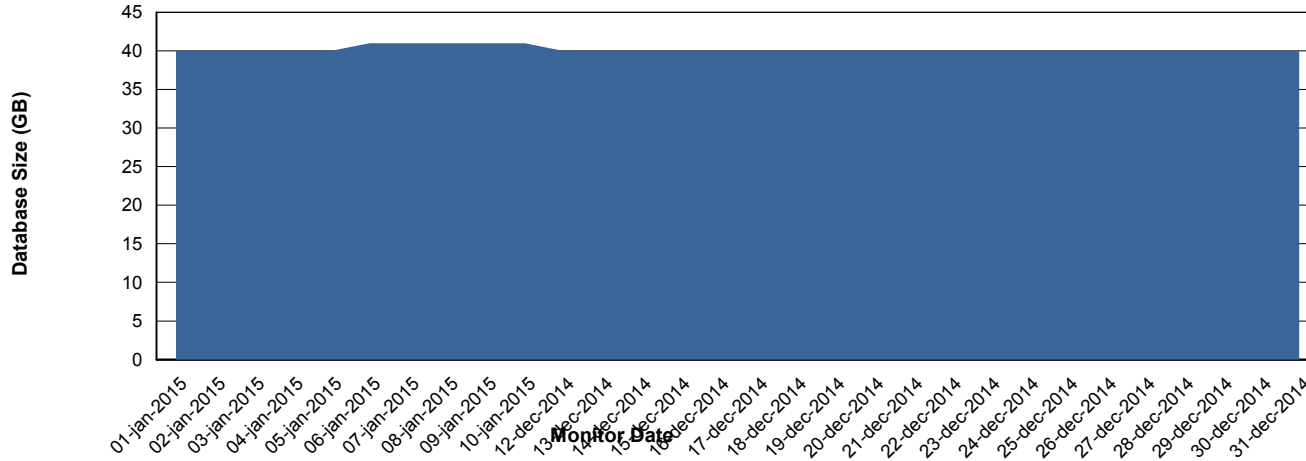
# Weekly SLA Customer Report

Customer JWR Production  
 Database ID 43



=====  
 DATABASE SIZE JWRDB\_Production  
 =====

## Database growth over last month



=====  
 DATABASE TABLESPACES JWRDB\_Production  
 =====

### TOTAL DATABASE SIZE PER TABLESPACE

Date	Tablespace Name	Filesize (Gb)	Usedsize (Gb)	Percentage free
10-1-2015	ABSDATA	15	12	20
	INDX	32	28	13
9-1-2015	ABSDATA	15	12	20
	INDX	32	28	13
8-1-2015	ABSDATA	15	12	20
	INDX	32	28	13
7-1-2015	ABSDATA	15	12	20
	INDX	32	28	13
6-1-2015	ABSDATA	15	12	20
	INDX	32	28	13
5-1-2015	ABSDATA	15	12	20
	INDX	32	28	13
4-1-2015	ABSDATA	15	12	20
	INDX	32	28	13

# Weekly SLA Customer Report

---

Customer     JWR Production  
Database ID   43



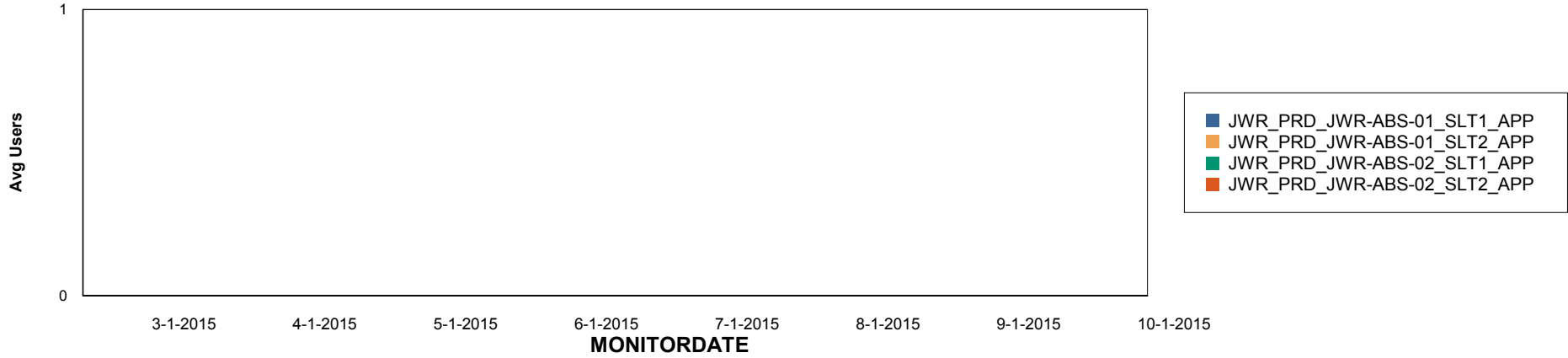
# Weekly SLA Customer Report

Customer JWR Production  
Database ID 43

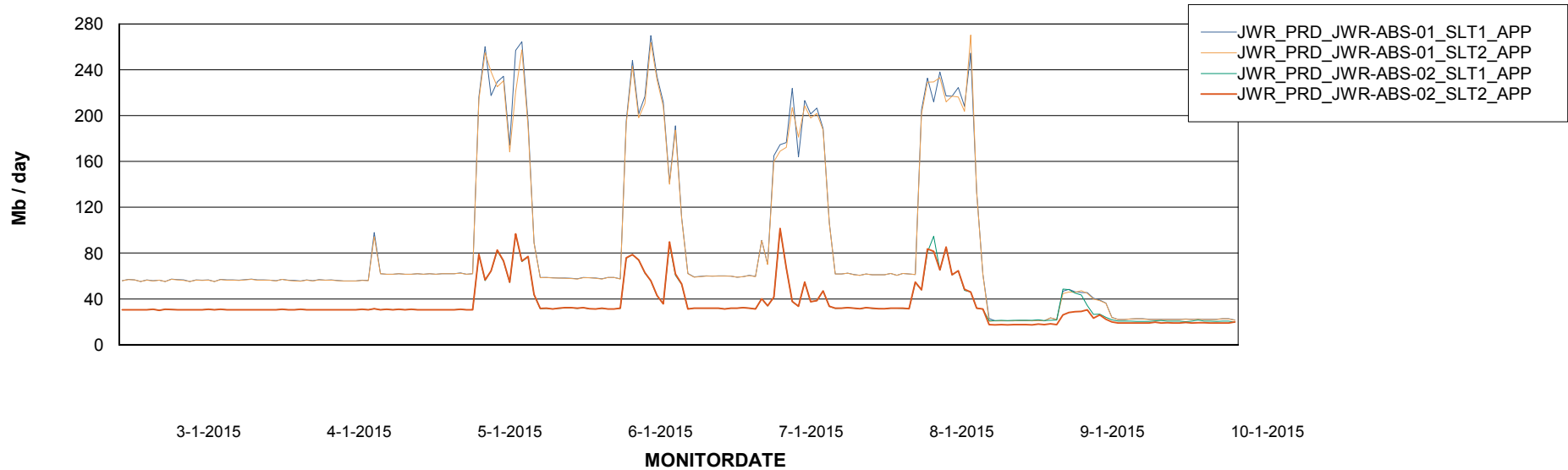


=====  
ABSolute Application Server Services  
=====

## Disaster per ABS Server



## Avg memory used per ABS Server Service



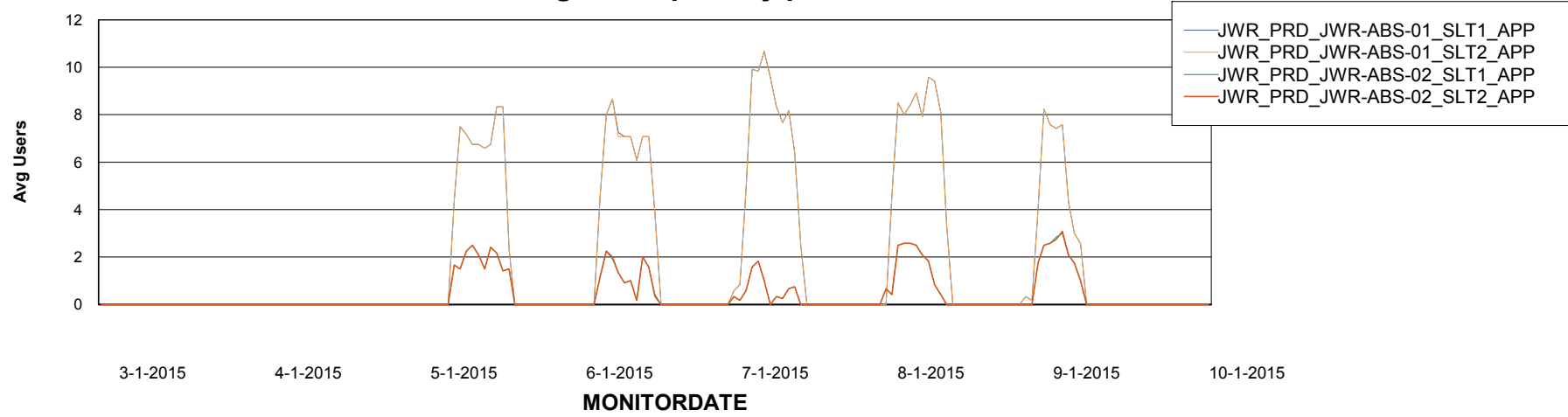
# Weekly SLA Customer Report

Customer JWR Production  
Database ID 43



=====  
ABSolute Application Server Services  
=====

### Avg users per day per ABS server



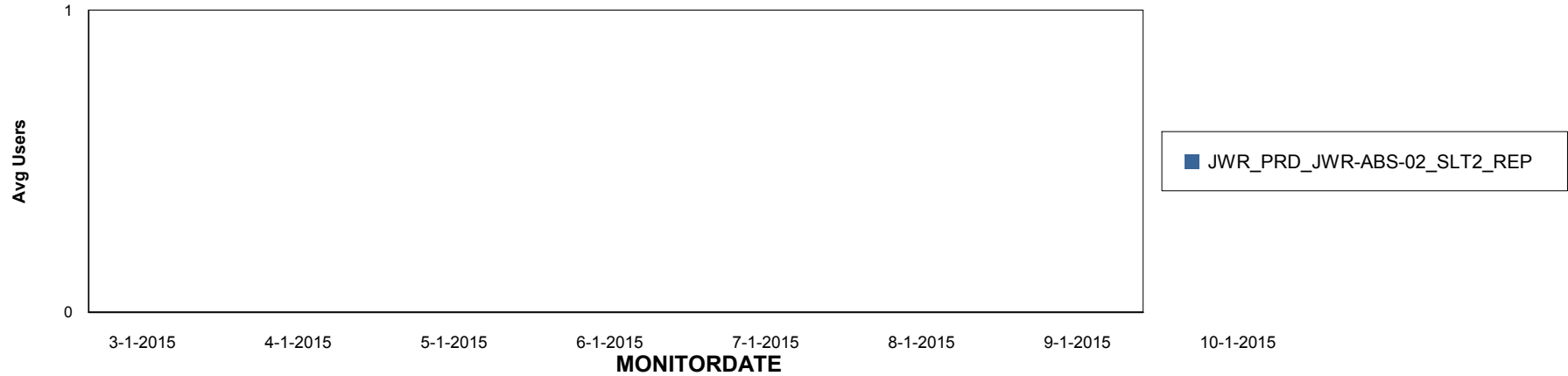
# Weekly SLA Customer Report

Customer JWR Production  
Database ID 43

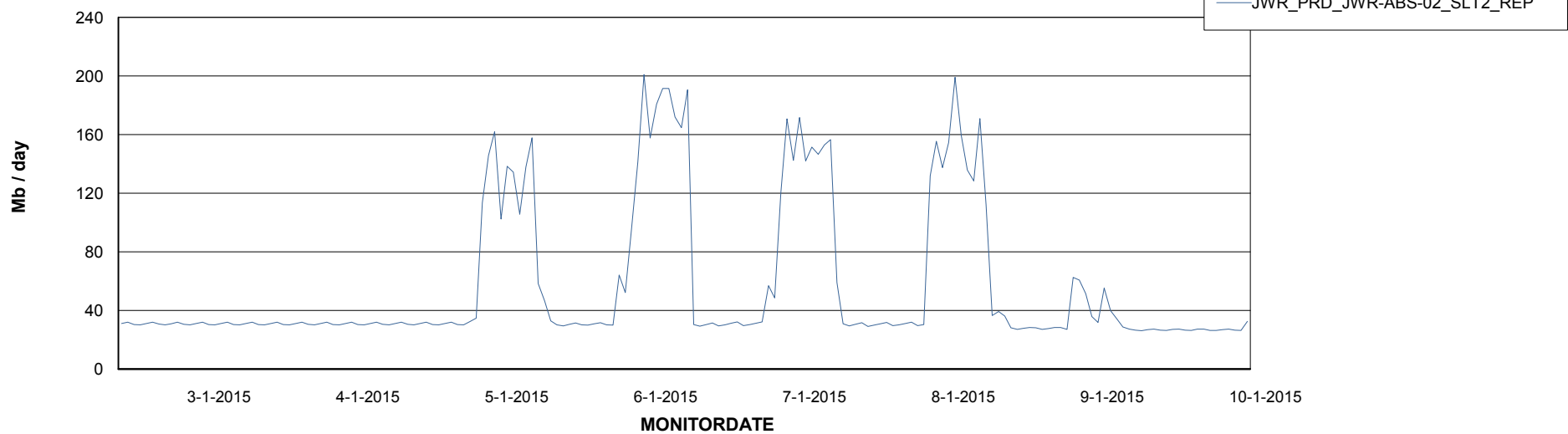


=====  
ABSolute Application ReportServer Services  
=====

## Disaster per ReportServer



## Avg memory used per ReportServer Service



# Weekly SLA Customer Report

Customer JWR Production  
Database ID 43



## Disaster per ABS component

