

Weekly SLA Customer Report

Customer FIS_Production
 Database ID 46



=====
 HARDDISK USAGE FIS_PRD_ORACLE1
 =====

	Total disk space on C (GB)	Free disk space on C (GB)	Total disk space on L (GB)	Free disk space on L (GB)	Total disk space on O (GB)	Free disk space on O (GB)
10-1-2015	279	224	279	152	186	35
9-1-2015	279	224	279	153	186	35
8-1-2015	279	224	279	154	186	35
7-1-2015	279	224	279	155	186	35
6-1-2015	279	224	279	156	186	35
5-1-2015	279	224	279	158	186	35
4-1-2015	279	224	279	159	186	35

=====
 HARDDISK USAGE FIS_PRD_ORACLE2
 =====

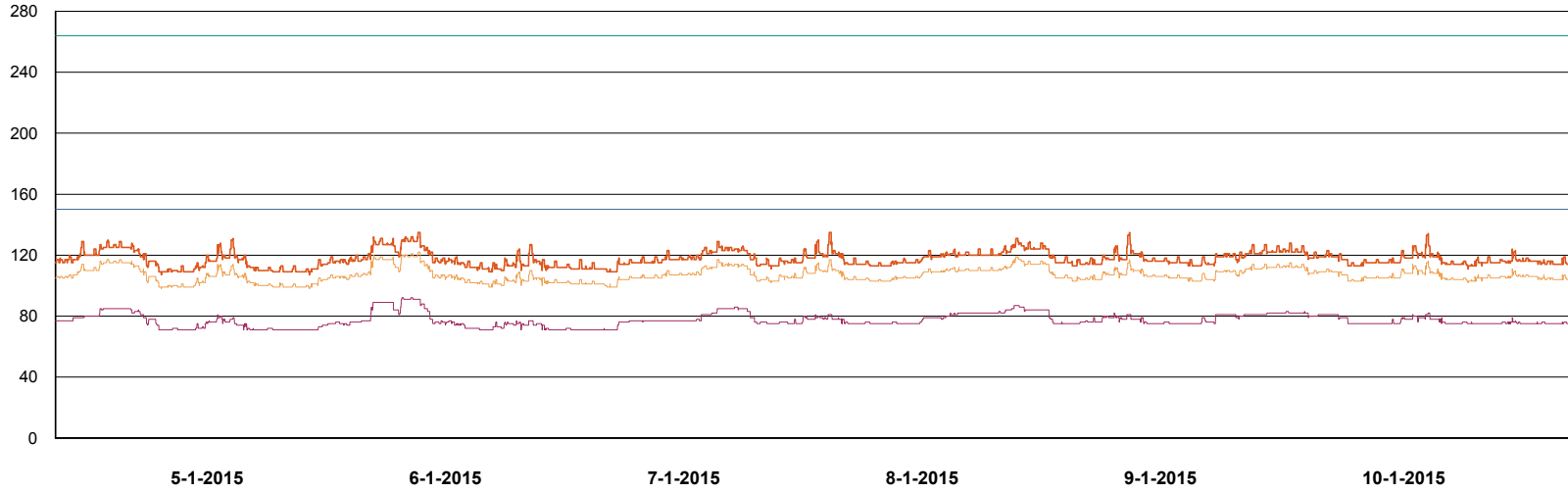
	Total disk space on C (GB)	Free disk space on C (GB)	Total disk space on L (GB)	Free disk space on L (GB)	Total disk space on O (GB)	Free disk space on O (GB)
10-1-2015	279	229	279	116	186	35
9-1-2015	279	229	279	117	186	35
8-1-2015	279	229	279	118	186	35
7-1-2015	279	229	279	120	186	35
6-1-2015	279	229	279	121	186	35
5-1-2015	279	229	279	122	186	35
4-1-2015	279	229	279	124	186	35

Weekly SLA Customer Report

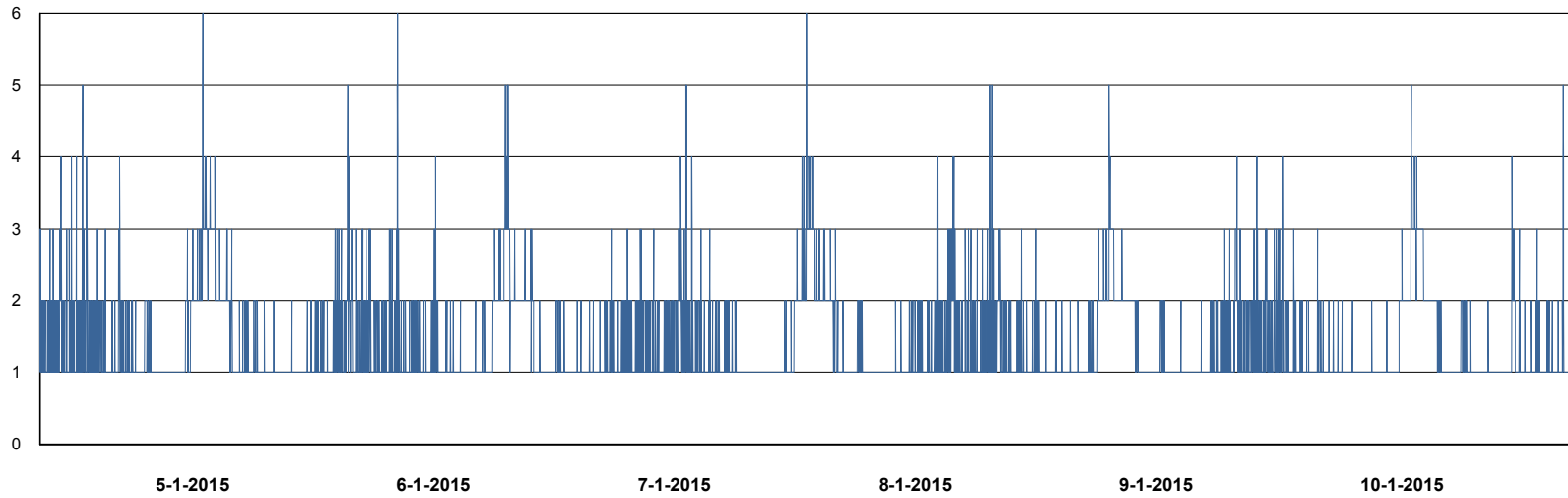
Customer FIS_Production
Database ID 46



DATABASE PERFORMANCE FISDB_Production



- DB Processes Max
- DB Processes Used
- DB Sessions Max
- DB Sessions Used
- Users Connected



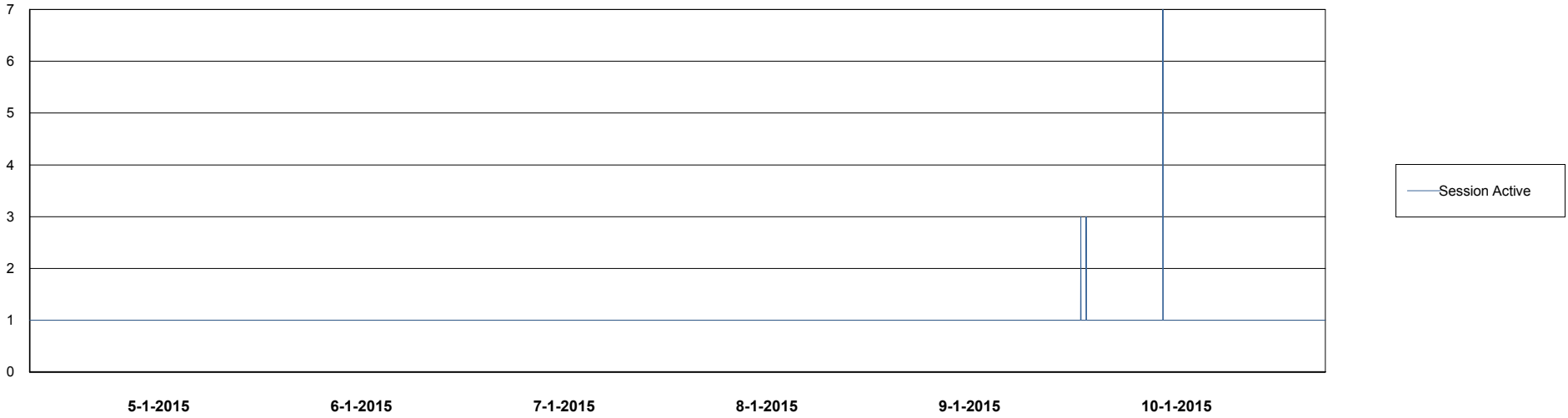
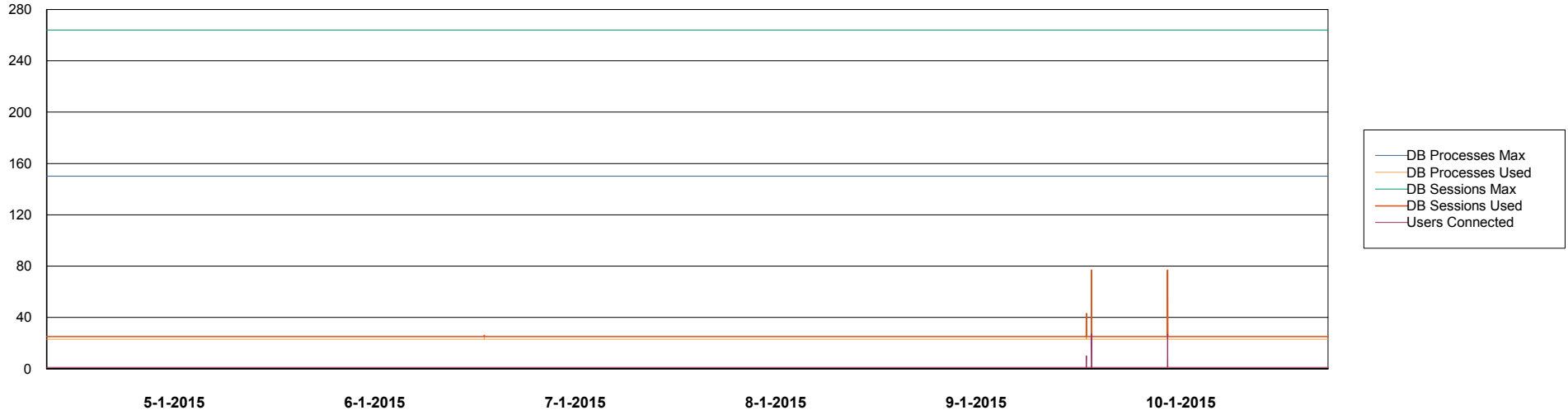
- Session Active

Weekly SLA Customer Report

Customer FIS_Production
Database ID 46



DATABASE PERFORMANCE FISDB_Standby



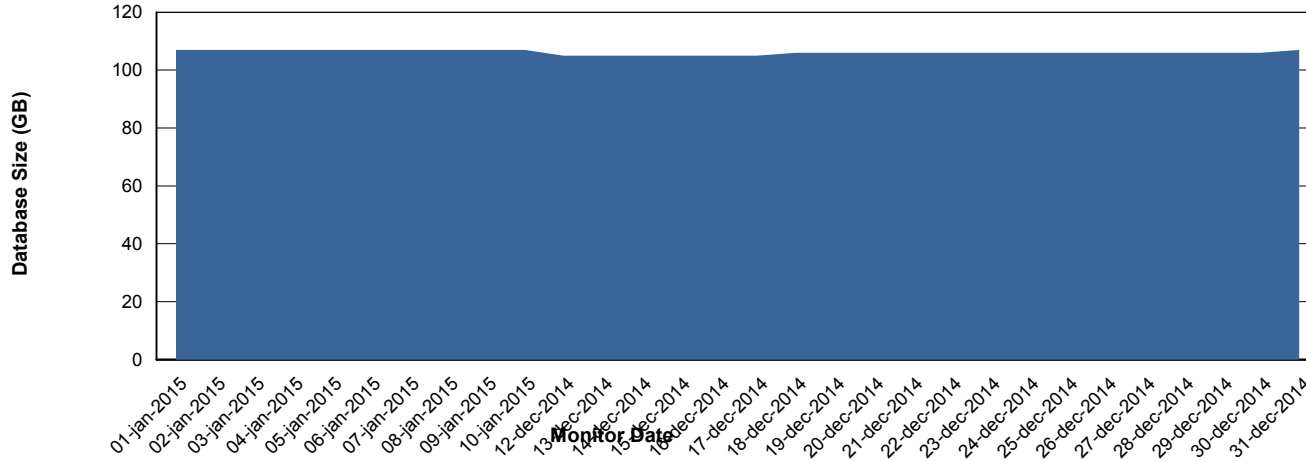
Weekly SLA Customer Report

Customer FIS_Production
 Database ID 46



=====
 DATABASE SIZE FISDB_Production
 =====

Database growth over last month



=====
 DATABASE TABLESPACES FISDB_Production
 =====

TOTAL DATABASE SIZE PER TABLESPACE

Date	Tablespace Name	Filesize (Gb)	Usedsize (Gb)	Percentage free
10-1-2015	ABSDATA	62	49	21
	INDX	75	60	20
9-1-2015	ABSDATA	62	48	23
	INDX	75	60	20
8-1-2015	ABSDATA	62	48	23
	INDX	75	60	20
7-1-2015	ABSDATA	62	48	23
	INDX	75	60	20
6-1-2015	ABSDATA	62	48	23
	INDX	75	60	20
5-1-2015	ABSDATA	62	48	23
	INDX	75	60	20
4-1-2015	ABSDATA	62	48	23
	INDX	75	60	20

