

## Weekly SLA Customer Report

Customer      CSC\_Production  
 Database ID    50



=====  
 HARDDISK USAGE    CSC\_PRD\_ABSSRV  
 =====

	Total disk space on C (GB)	Free disk space on C (GB)	Total disk space on D (GB)	Free disk space on D (GB)	Total disk space on E (GB)	Free disk space on E (GB)
10-1-2015	102	71	220	143	225	65
9-1-2015	102	71	220	143	225	48
8-1-2015	102	71	220	143	225	51
7-1-2015	102	71	220	143	225	54
6-1-2015	102	71	220	143	225	56
5-1-2015	102	71	220	143	225	59
4-1-2015	102	71	220	143	225	62

=====  
 HARDDISK USAGE    CSC\_PRD\_ABS01  
 =====

	Total disk space on C (GB)	Free disk space on C (GB)	Total disk space on D (GB)	Free disk space on D (GB)	Total disk space on E (GB)	Free disk space on E (GB)
10-1-2015	110	38	210	125	500	178
9-1-2015	110	39	210	125	500	195
8-1-2015	110	42	210	125	500	205
7-1-2015	110	41	210	125	500	241
6-1-2015	110	45	210	125	500	251
5-1-2015	110	36	210	125	500	271
4-1-2015	110	7	210	125	500	216

## Weekly SLA Customer Report

Customer      CSC\_Production  
 Database ID    50



=====  
 HARDDISK USAGE    CSC\_PRD\_ABS02  
 =====

	Total disk space on C (GB)	Free disk space on C (GB)
10-1-2015	80	39
9-1-2015	80	39
8-1-2015	80	42
7-1-2015	80	47
6-1-2015	80	40
5-1-2015	80	6
4-1-2015	80	6

=====  
 HARDDISK USAGE    CSC\_PRD\_WEBSRV  
 =====

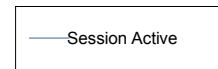
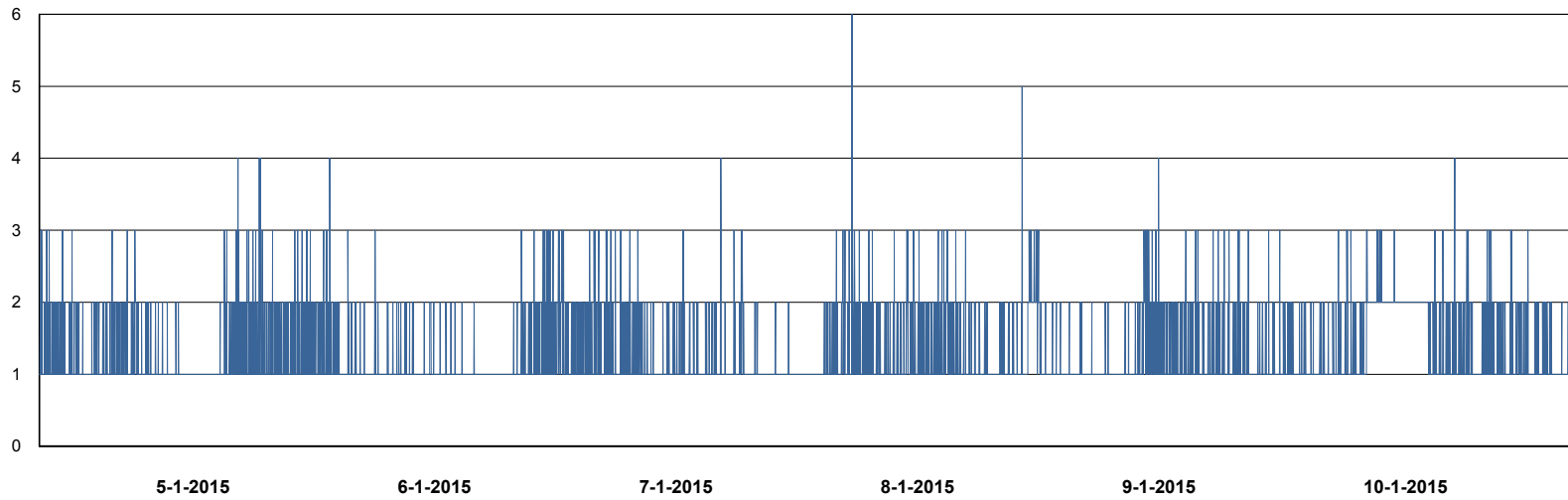
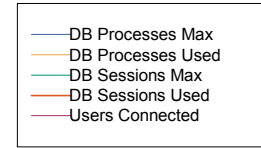
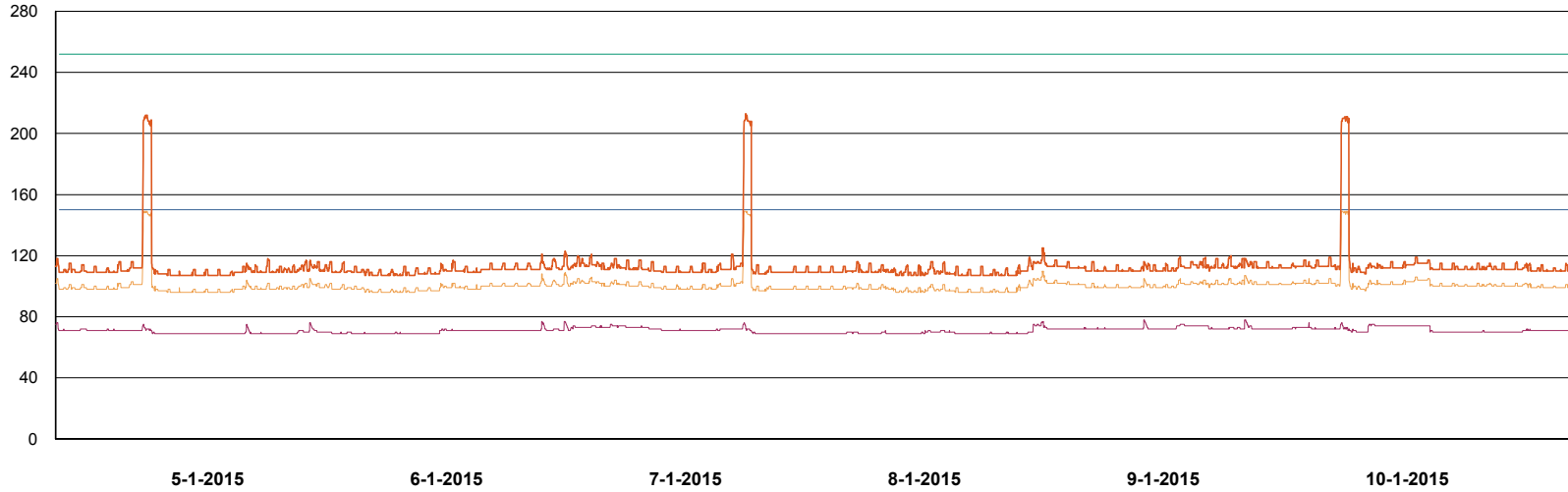
	Used disk space on C (GB)	Total disk space on C (GB)	Free disk space on C (GB)
10-1-2015	35	59	24
9-1-2015	35	59	24
8-1-2015	35	59	24
7-1-2015	35	59	24
6-1-2015	35	59	24
5-1-2015	35	59	24
4-1-2015	35	59	24

# Weekly SLA Customer Report

Customer CSC\_Production  
Database ID 50



DATABASE PERFORMANCE CSCDB\_Production

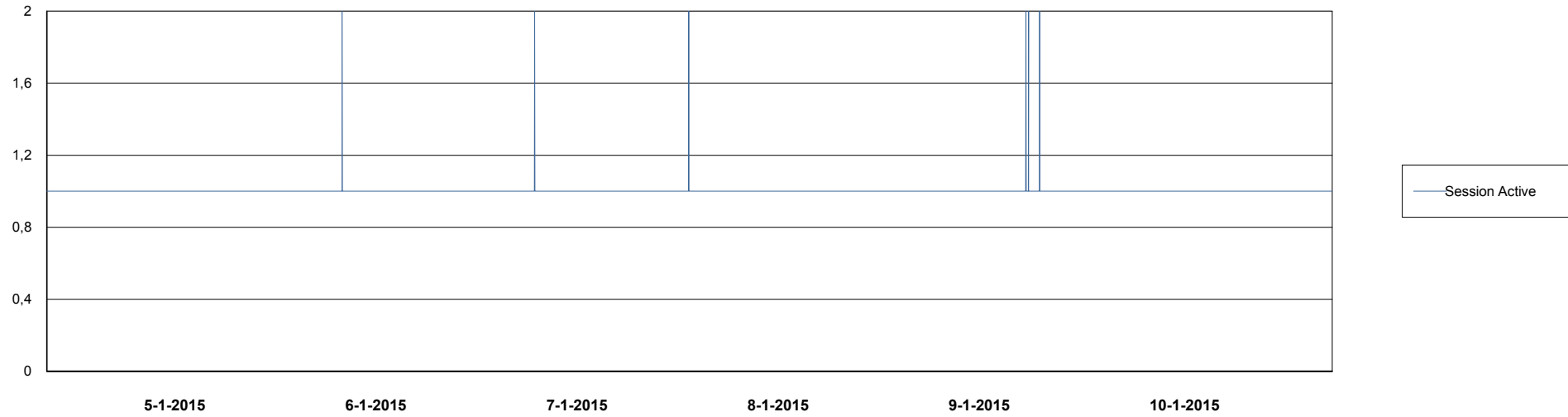
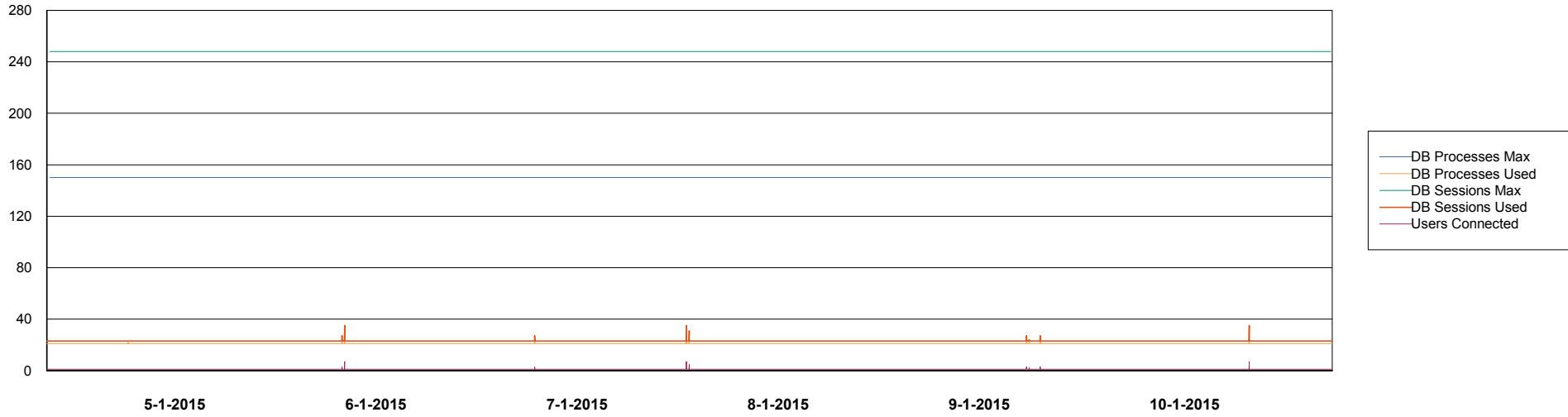


# Weekly SLA Customer Report

Customer CSC\_Production  
Database ID 50



DATABASE PERFORMANCE CSCDB\_Standby



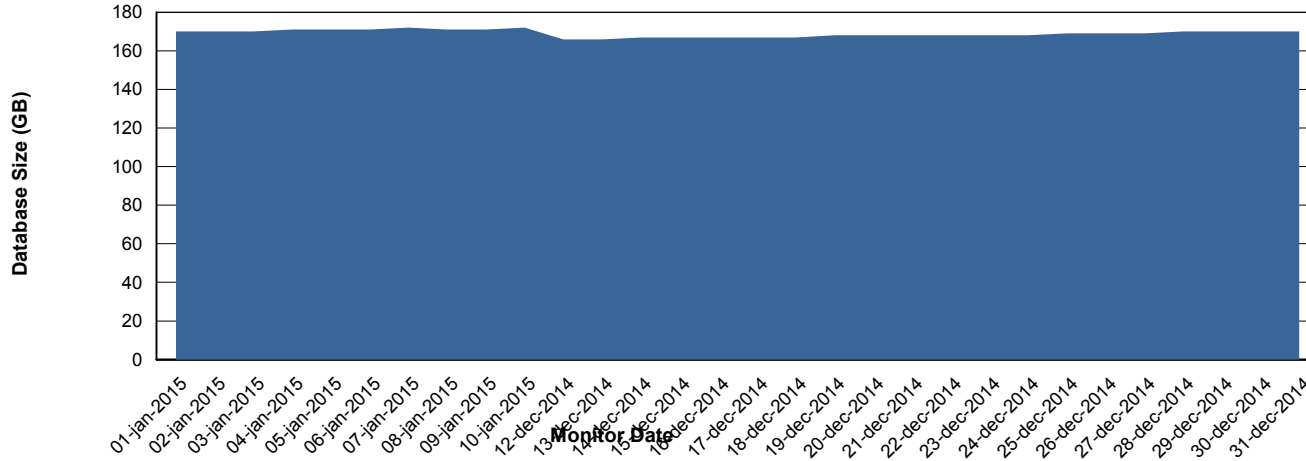
# Weekly SLA Customer Report

Customer CSC\_Production  
 Database ID 50



=====  
 DATABASE SIZE CSCDB\_Production  
 =====

## Database growth over last month



=====  
 DATABASE TABLESPACES CSCDB\_Production  
 =====

### TOTAL DATABASE SIZE PER TABLESPACE

Date	Tablespace Name	Filesize (Gb)	Usedsize (Gb)	Percentage free
10-1-2015	ABSDATA	59	46	22
	INDX	156	124	21
9-1-2015	ABSDATA	59	46	22
	INDX	156	124	21
8-1-2015	ABSDATA	59	46	22
	INDX	156	124	21
7-1-2015	ABSDATA	59	46	22
	INDX	156	124	21
6-1-2015	ABSDATA	59	46	22
	INDX	156	124	21
5-1-2015	ABSDATA	59	46	22
	INDX	156	124	21
4-1-2015	ABSDATA	59	46	22
	INDX	156	124	21

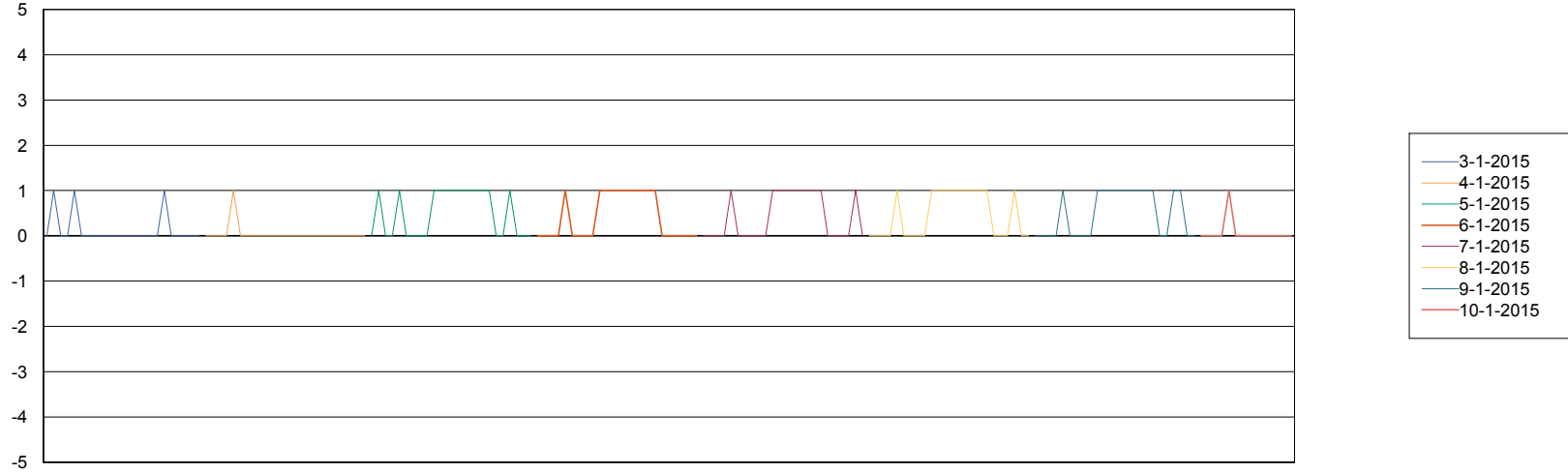
# Weekly SLA Customer Report

Customer CSC\_Production  
Database ID 50



=====  
STANDBY DATABASE HEALTH CSC\_Production  
=====

### Recovery lag for last 7 days



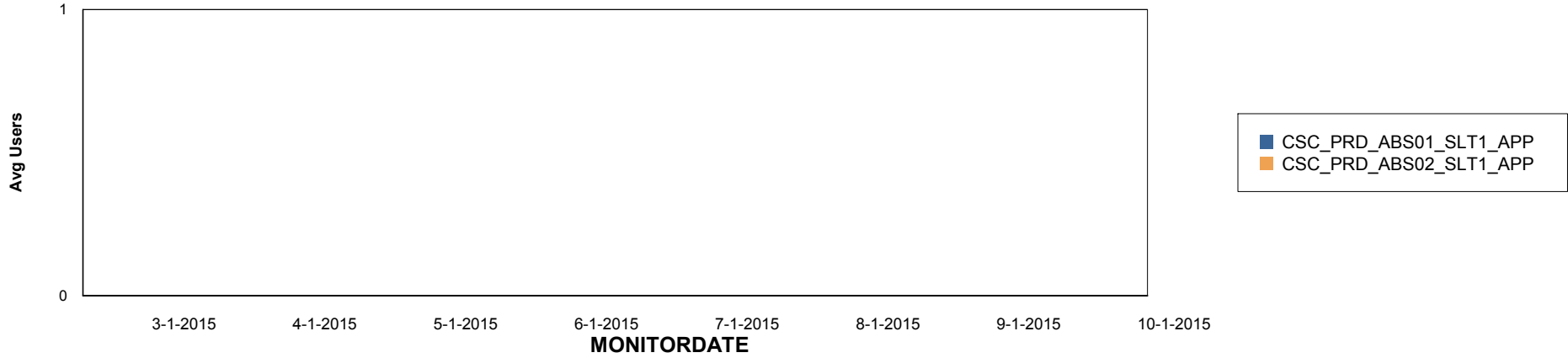
# Weekly SLA Customer Report

Customer CSC\_Production  
Database ID 50

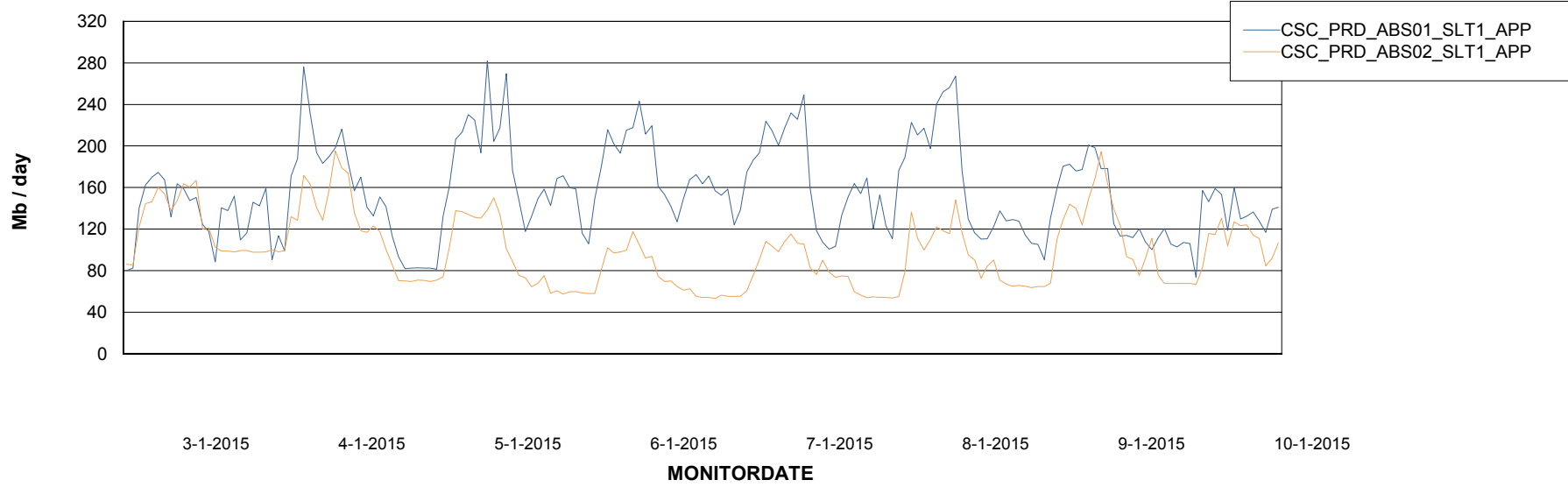


=====  
ABSolute Application Server Services  
=====

## Disaster per ABS Server



## Avg memory used per ABS Server Service



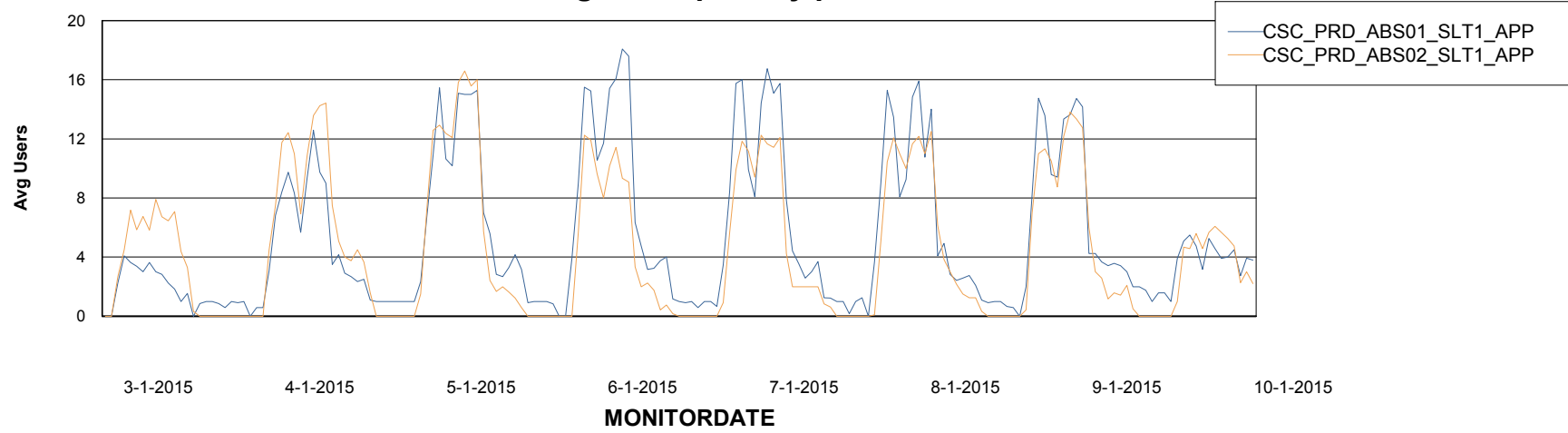
# Weekly SLA Customer Report

Customer CSC\_Production  
Database ID 50



=====  
ABSolute Application Server Services  
=====

### Avg users per day per ABS server



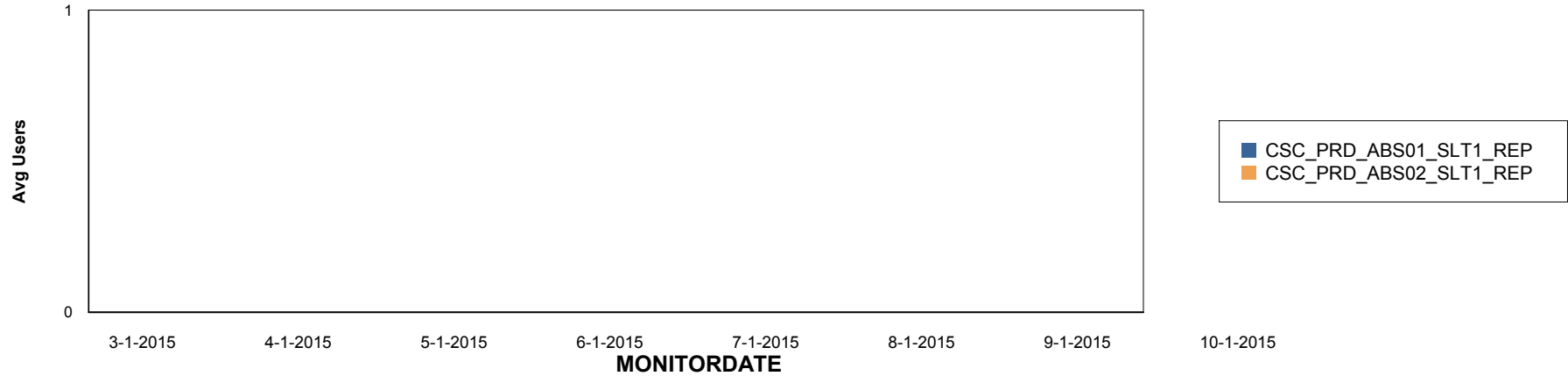
# Weekly SLA Customer Report

Customer CSC\_Production  
Database ID 50

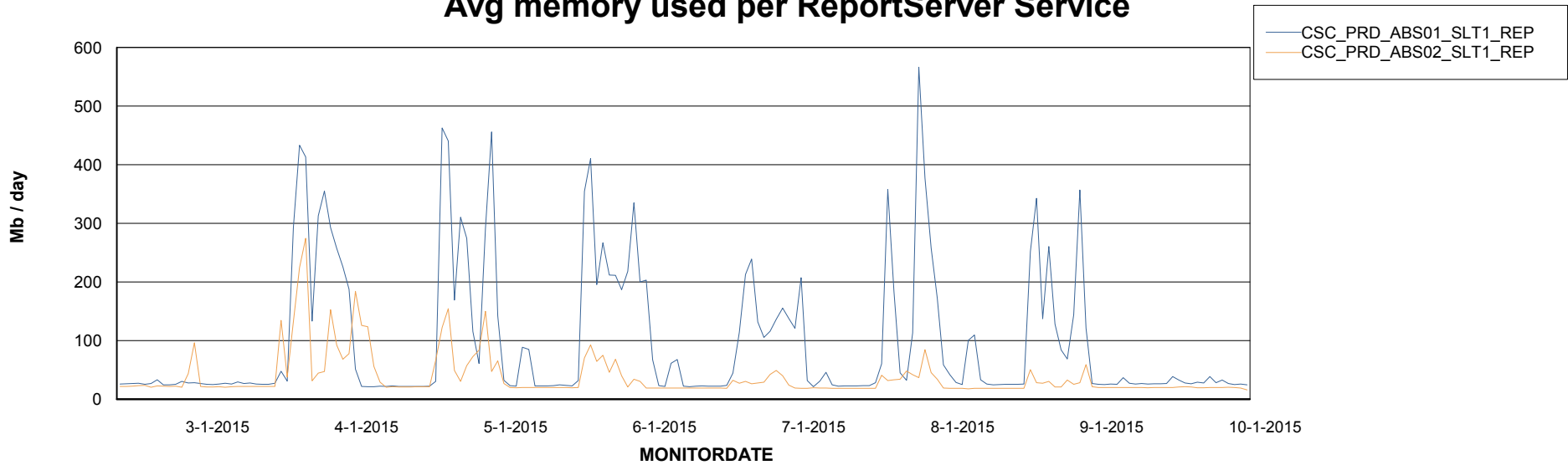


=====  
ABSolute Application ReportServer Services  
=====

## Disaster per ReportServer



## Avg memory used per ReportServer Service



# Weekly SLA Customer Report

Customer CSC\_Production  
Database ID 50



## Disaster per ABS component

