

Weekly SLA Customer Report

Customer CLO Production
 Database ID 38



=====
 HARDDISK USAGE CLO_PRD_CLO_ORACLE_001
 =====

	Total disk space on C (GB)	Free disk space on C (GB)	Total disk space on D (GB)	Free disk space on D (GB)	Total disk space on E (GB)	Free disk space on E (GB)
10-1-2015	137	28	137	85	107	61
9-1-2015	137	29	137	86	107	55
8-1-2015	137	29	137	86	107	56
7-1-2015	137	29	137	86	107	58
6-1-2015	137	29	137	86	107	59
5-1-2015	137	25	137	87	107	61
4-1-2015	137	20	137	89	107	61

=====
 HARDDISK USAGE CLO_PRD_CLO_ORACLE_002
 =====

	Total disk space on C (GB)	Free disk space on C (GB)	Total disk space on D (GB)	Free disk space on D (GB)	Total disk space on E (GB)	Free disk space on E (GB)
10-1-2015	137	28	137	49	107	61
9-1-2015	137	28	137	49	107	55
8-1-2015	137	28	137	49	107	56
7-1-2015	137	28	137	49	107	58
6-1-2015	137	28	137	49	107	59
5-1-2015	137	25	137	51	107	61
4-1-2015	137	24	137	52	107	61

Weekly SLA Customer Report

Customer CLO Production
 Database ID 38



=====
 HARDDISK USAGE CLO_PRD_ORACLE1
 =====

	Total disk space on C (GB)	Free disk space on C (GB)	Total disk space on D (GB)	Free disk space on D (GB)	Total disk space on E (GB)	Free disk space on E (GB)
10-1-2015	137	28	137	85	107	61
9-1-2015	137	29	137	86	107	55
8-1-2015	137	29	137	86	107	56
7-1-2015	137	29	137	86	107	58
6-1-2015	137	29	137	86	107	59
5-1-2015	137	25	137	87	107	61
4-1-2015	137	20	137	89	107	61

=====
 HARDDISK USAGE CLO_PRD_ORACLE2
 =====

	Total disk space on C (GB)	Free disk space on C (GB)	Total disk space on D (GB)	Free disk space on D (GB)	Total disk space on E (GB)	Free disk space on E (GB)
10-1-2015	137	28	137	49	107	61
9-1-2015	137	28	137	49	107	55
8-1-2015	137	28	137	49	107	56
7-1-2015	137	28	137	49	107	58
6-1-2015	137	28	137	49	107	59
5-1-2015	137	25	137	51	107	61
4-1-2015	137	24	137	52	107	61

Weekly SLA Customer Report

Customer CLO Production
Database ID 38



=====
HARDDISK USAGE CLO_WEB_PRD_CLO_ORACLE_001
=====

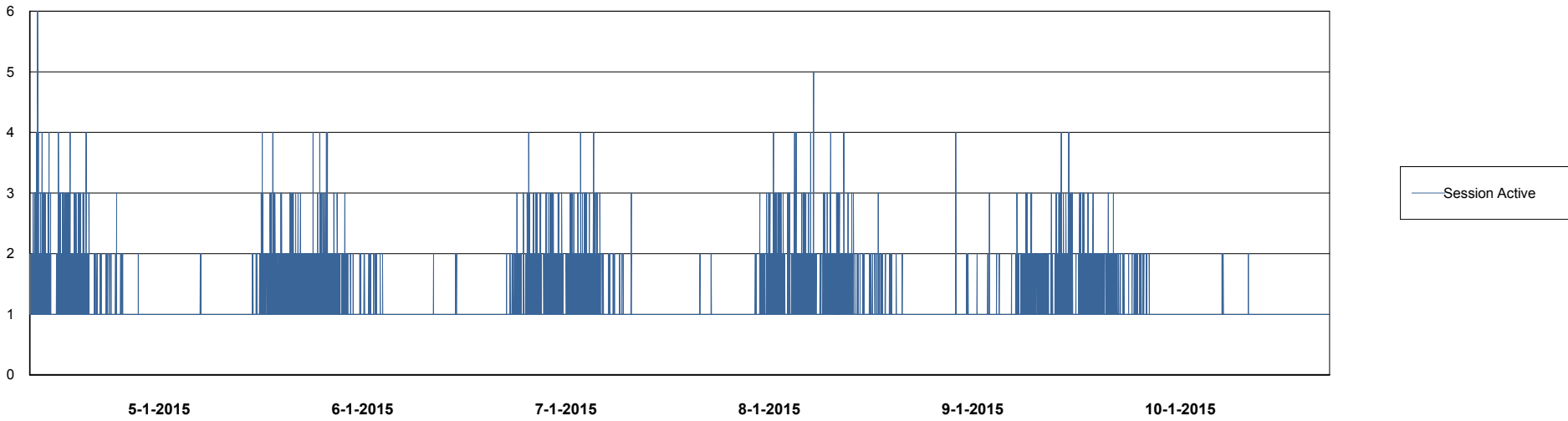
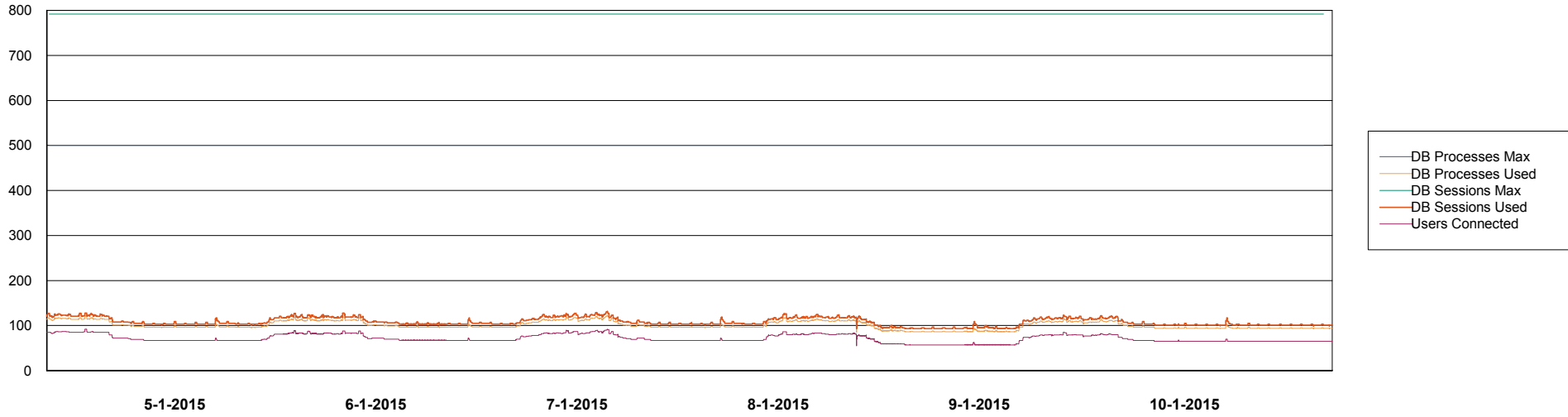
	Used disk space on C (GB)	Total disk space on C (GB)	Free disk space on C (GB)	Total disk space on E (GB)	Free disk space on E (GB)
10-1-2015	108	137	28	107	61
9-1-2015	108	137	29	107	55
8-1-2015	108	137	29	107	56
7-1-2015	108	137	29	107	58
6-1-2015	108	137	29	107	59
5-1-2015	112	137	25	107	61
4-1-2015	116	137	20	107	61

Weekly SLA Customer Report

Customer CLO Production
Database ID 38



DATABASE PERFORMANCE CLODB_Production

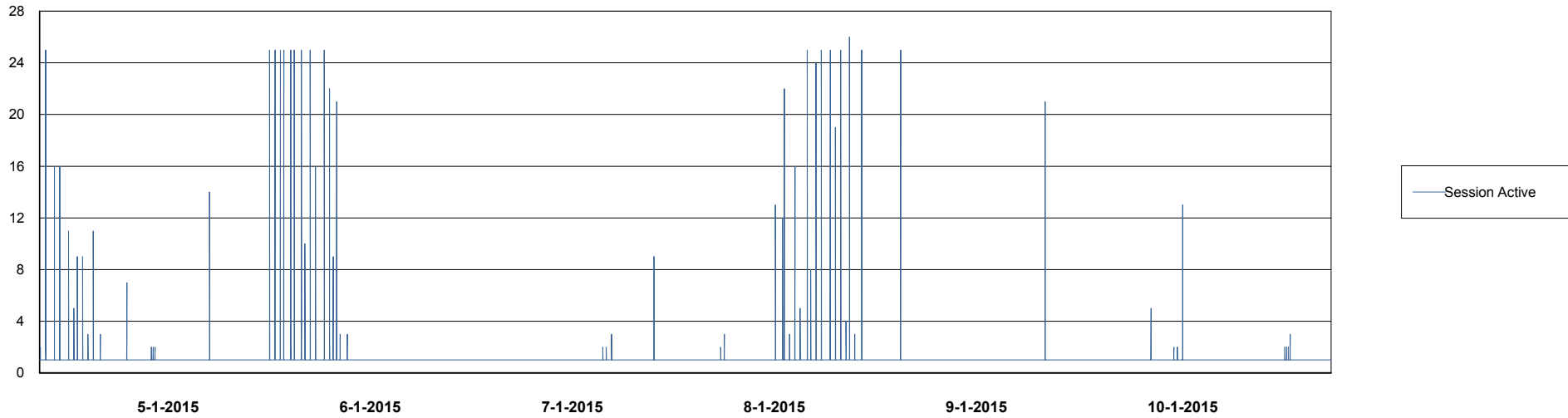
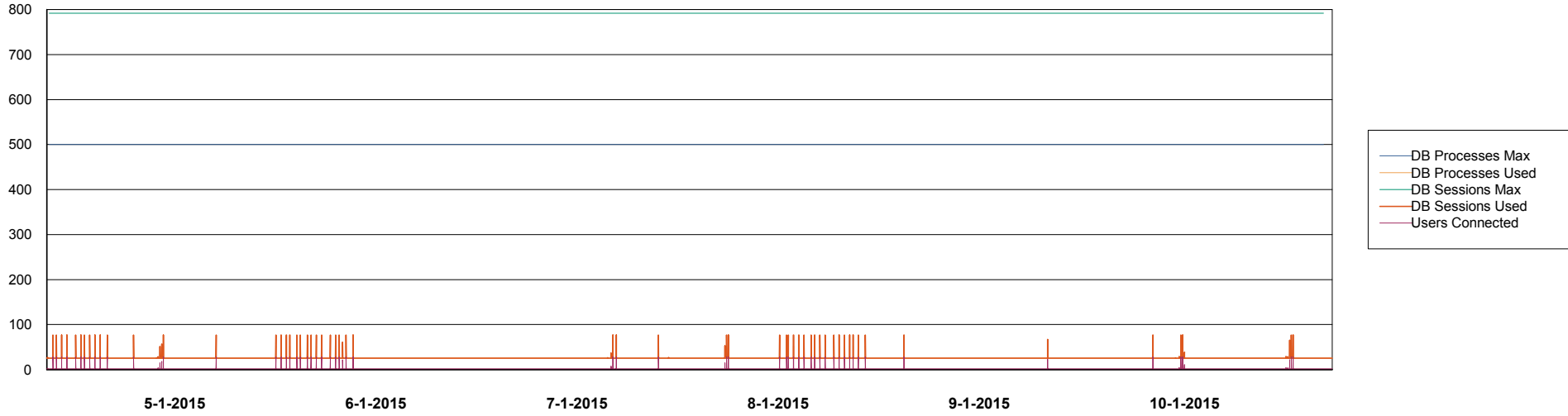


Weekly SLA Customer Report

Customer CLO Production
Database ID 38



DATABASE PERFORMANCE CLODB_Standby



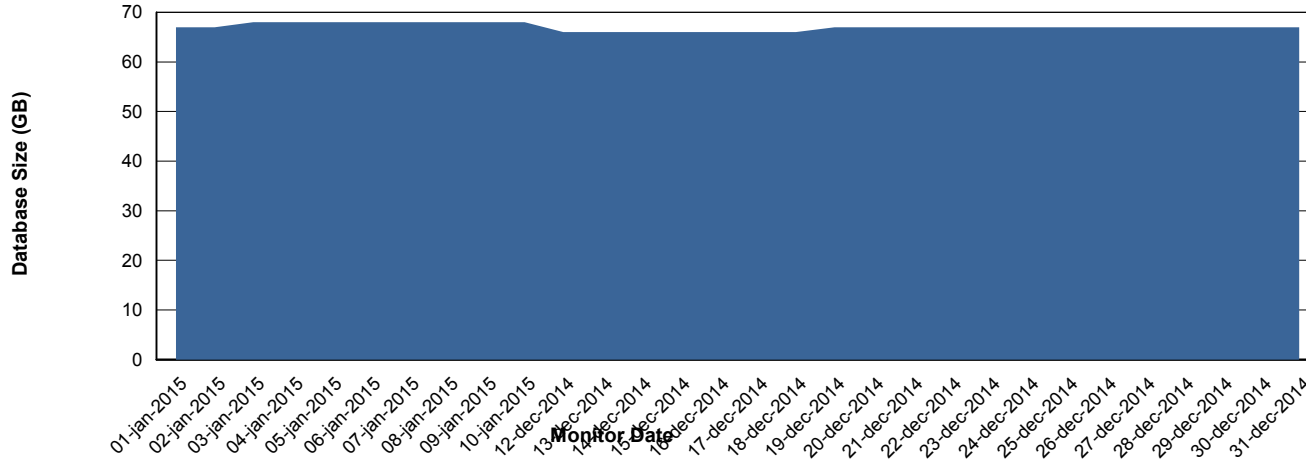
Weekly SLA Customer Report

Customer CLO Production
 Database ID 38



=====
 DATABASE SIZE CLODB_Production
 =====

Database growth over last month



=====
 DATABASE TABLESPACES CLODB_Production
 =====

TOTAL DATABASE SIZE PER TABLESPACE

Date	Tablespace Name	Filesize (Gb)	Usedsize (Gb)	Percentage free
10-1-2015	ABSDATA	42	34	19
	INDX	40	30	25
9-1-2015	ABSDATA	42	34	19
	INDX	40	30	25
8-1-2015	ABSDATA	42	34	19
	INDX	40	30	25
7-1-2015	ABSDATA	42	34	19
	INDX	40	30	25
6-1-2015	ABSDATA	42	34	19
	INDX	40	30	25
5-1-2015	ABSDATA	42	34	19
	INDX	40	30	25
4-1-2015	ABSDATA	36	33	8
	INDX	37	30	19

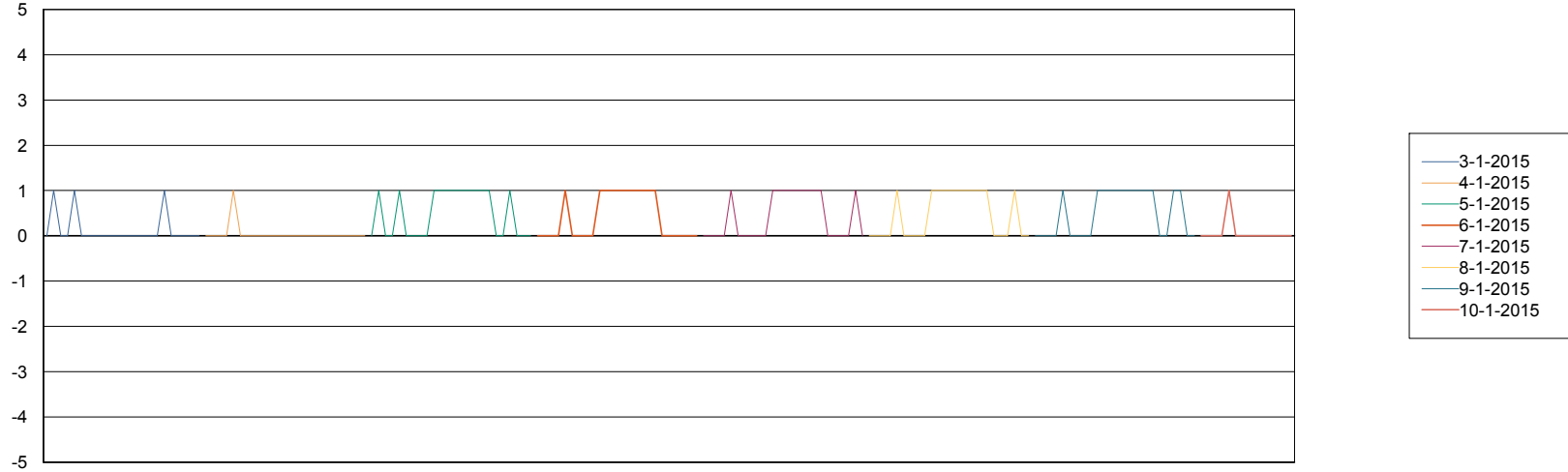
Weekly SLA Customer Report

Customer CLO Production
Database ID 38



=====
STANDBY DATABASE HEALTH CLO Production
=====

Recovery lag for last 7 days



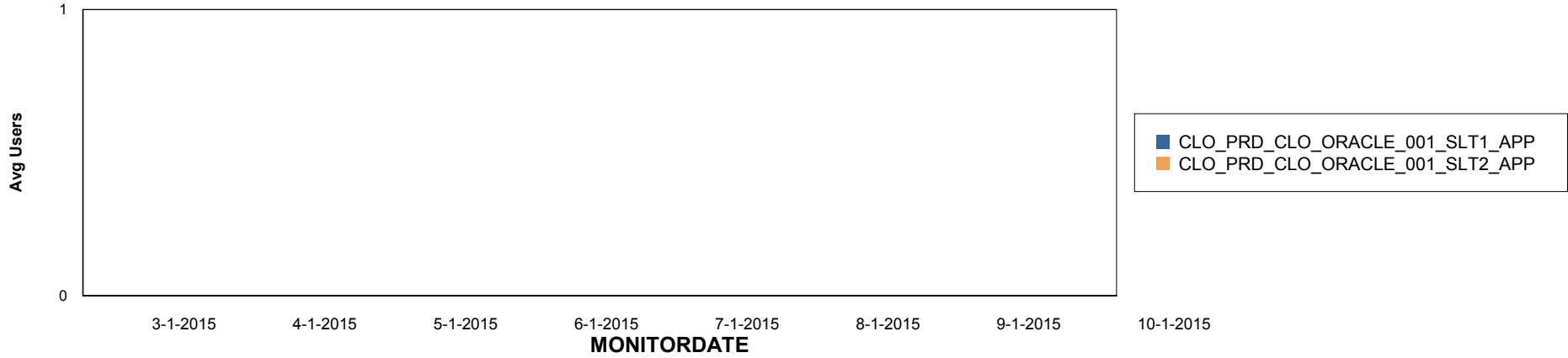
Weekly SLA Customer Report

Customer CLO Production
Database ID 38

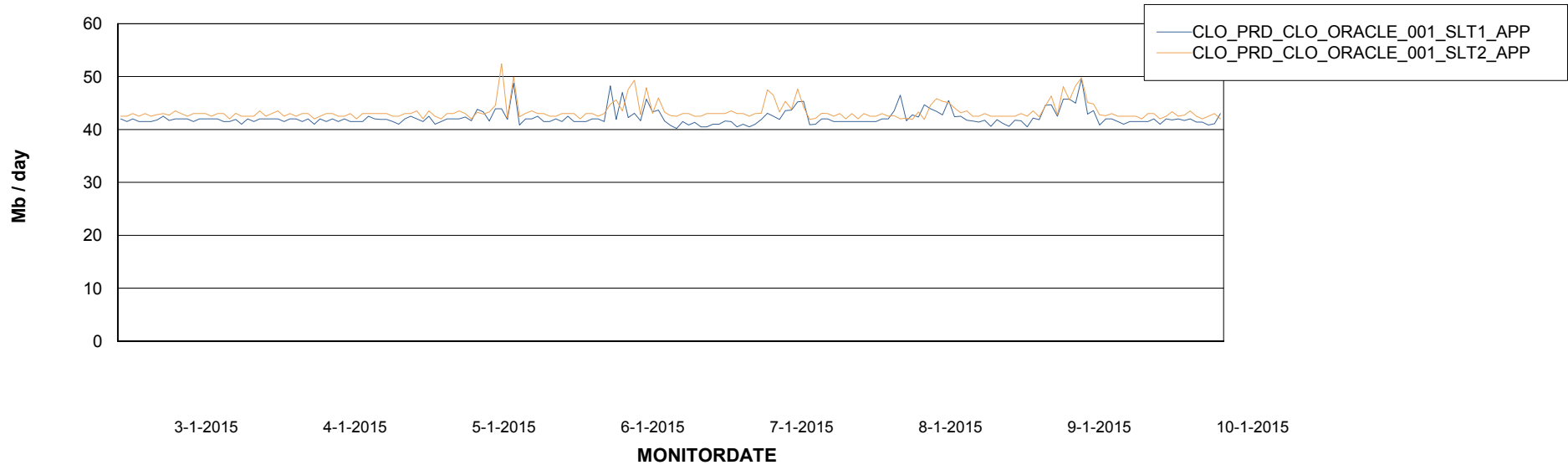


ABSolute Application Server Services

Disaster per ABS Server



Avg memory used per ABS Server Service



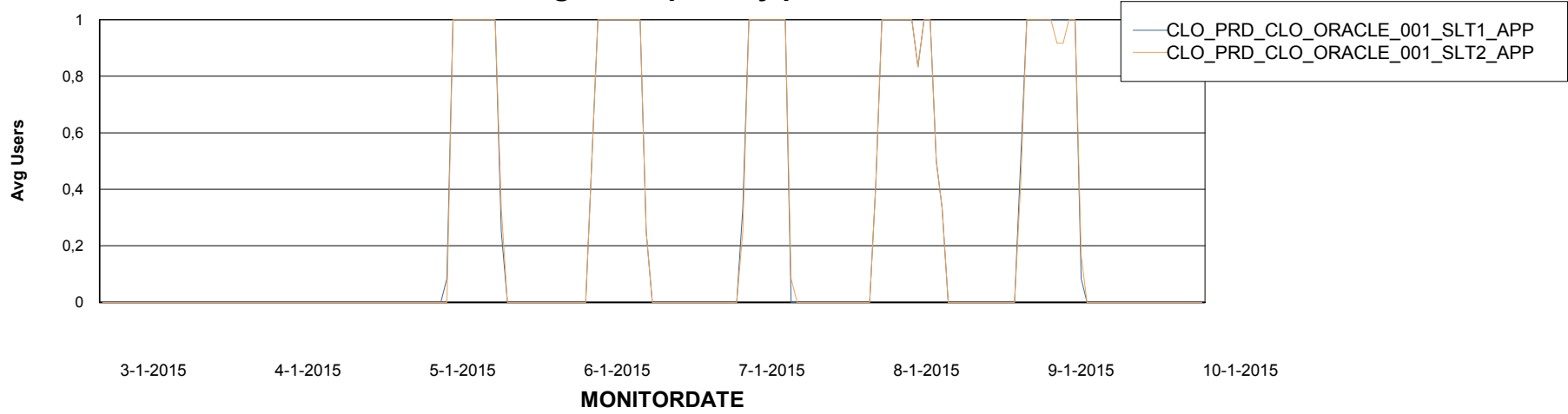
Weekly SLA Customer Report

Customer CLO Production
Database ID 38



=====
ABSolute Application Server Services
=====

Avg users per day per ABS server



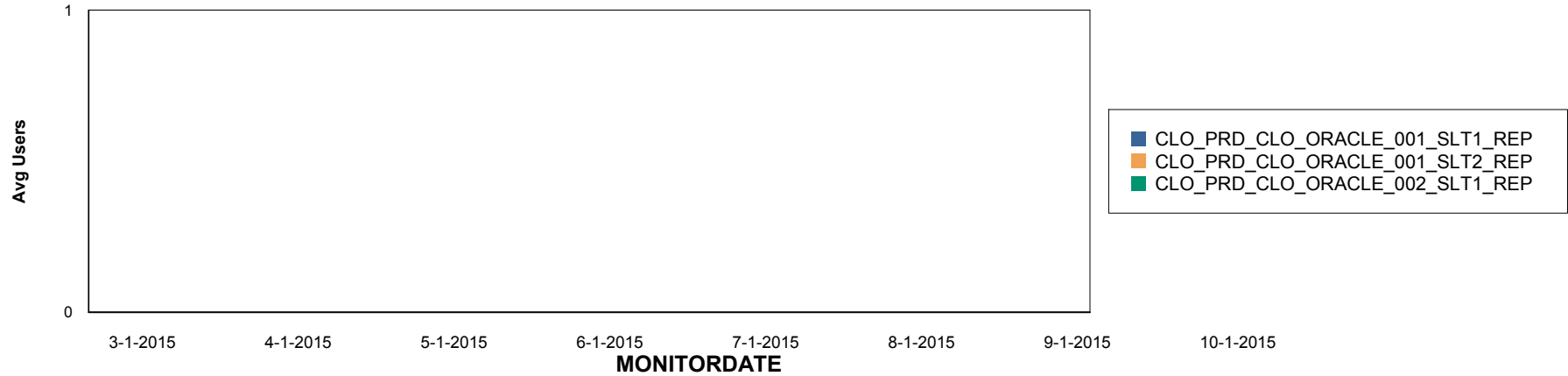
Weekly SLA Customer Report

Customer CLO Production
Database ID 38

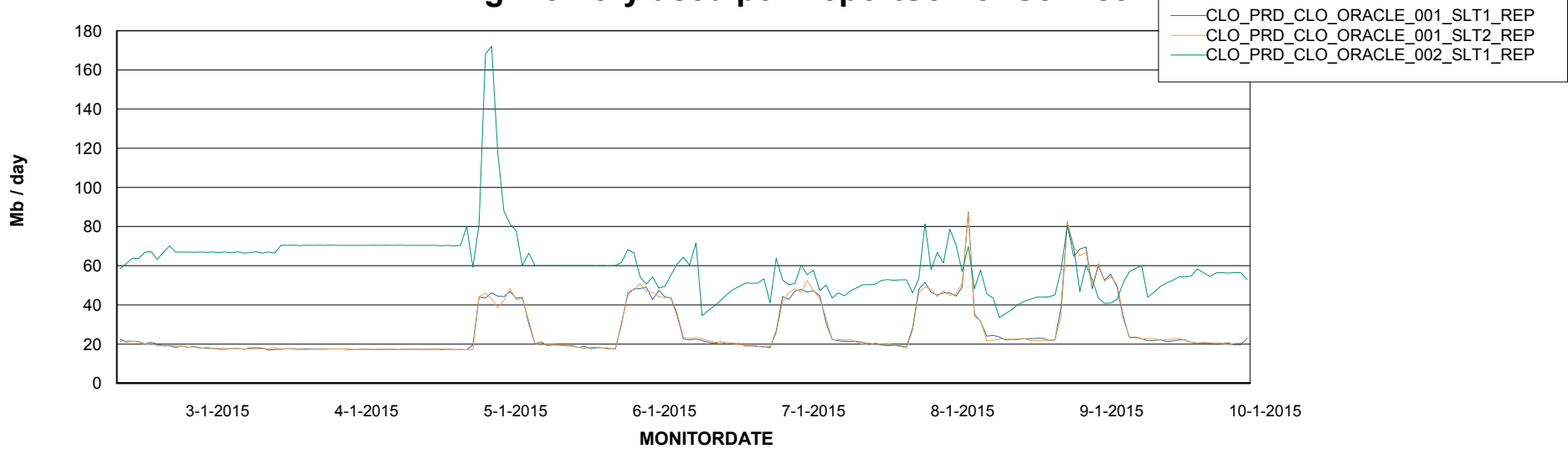


=====
ABSolute Application ReportServer Services
=====

Disaster per ReportServer



Avg memory used per ReportServer Service



Weekly SLA Customer Report

Customer CLO Production
Database ID 38



Disaster per ABS component

