

## Weekly SLA Customer Report

Customer BOH\_Production  
 Database ID 55



=====  
 HARDDISK USAGE BOH\_PRD\_ORACLE1  
 =====

	Total disk space on C (GB)	Free disk space on C (GB)	Total disk space on D (GB)	Free disk space on D (GB)	Total disk space on E (GB)	Free disk space on E (GB)
10-1-2015	80	13	100	67	150	59
9-1-2015	80	13	100	67	150	60
8-1-2015	80	13	100	67	150	61
7-1-2015	80	13	100	67	150	61
6-1-2015	80	13	100	67	150	62
5-1-2015	80	13	100	67	150	63
4-1-2015	80	13	100	67	150	64

=====  
 HARDDISK USAGE BOH\_PRD\_ORACLE2  
 =====

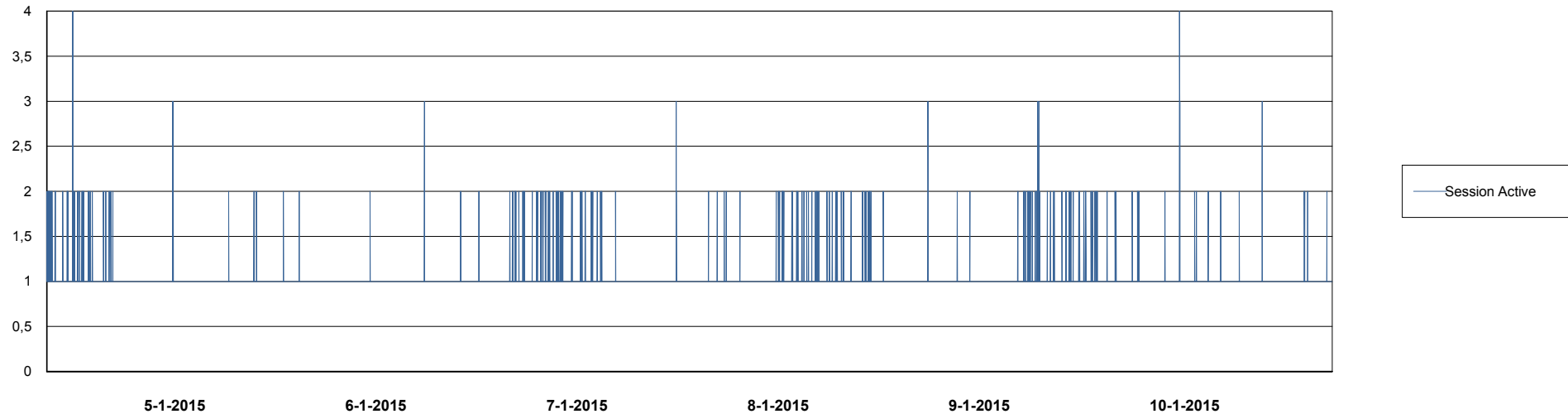
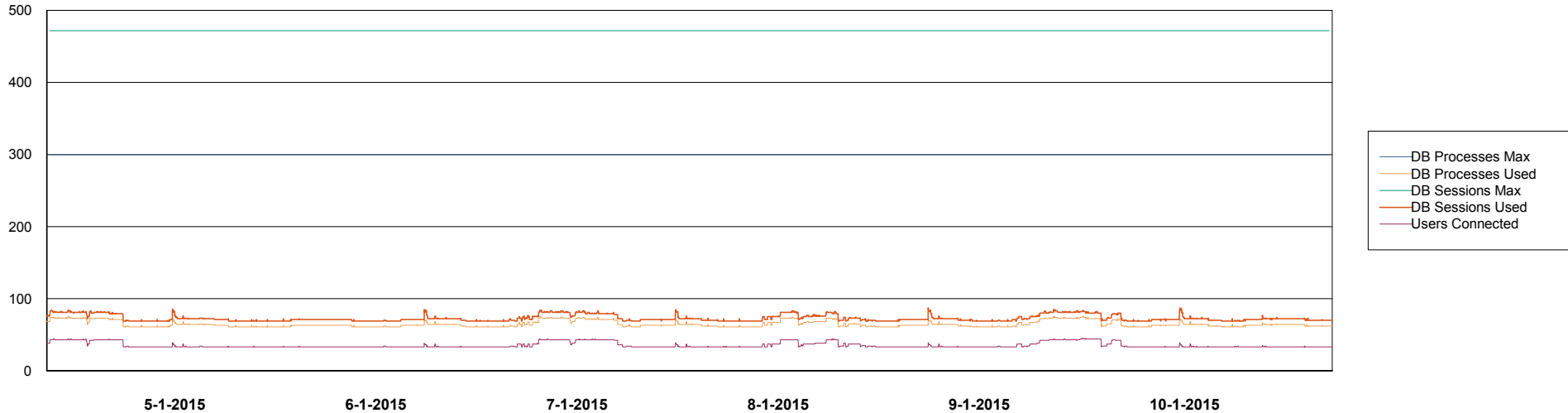
	Total disk space on C (GB)	Free disk space on C (GB)	Total disk space on D (GB)	Free disk space on D (GB)	Total disk space on E (GB)	Free disk space on E (GB)
10-1-2015	67	19	227	195	329	266
9-1-2015	67	19	227	195	329	267
8-1-2015	67	19	227	195	329	268
7-1-2015	67	19	227	195	329	269
6-1-2015	67	19	227	195	329	269
5-1-2015	67	19	227	195	329	270
4-1-2015	67	19	227	195	329	271

# Weekly SLA Customer Report

Customer BOH\_Production  
Database ID 55



DATABASE PERFORMANCE BOHDB\_Production

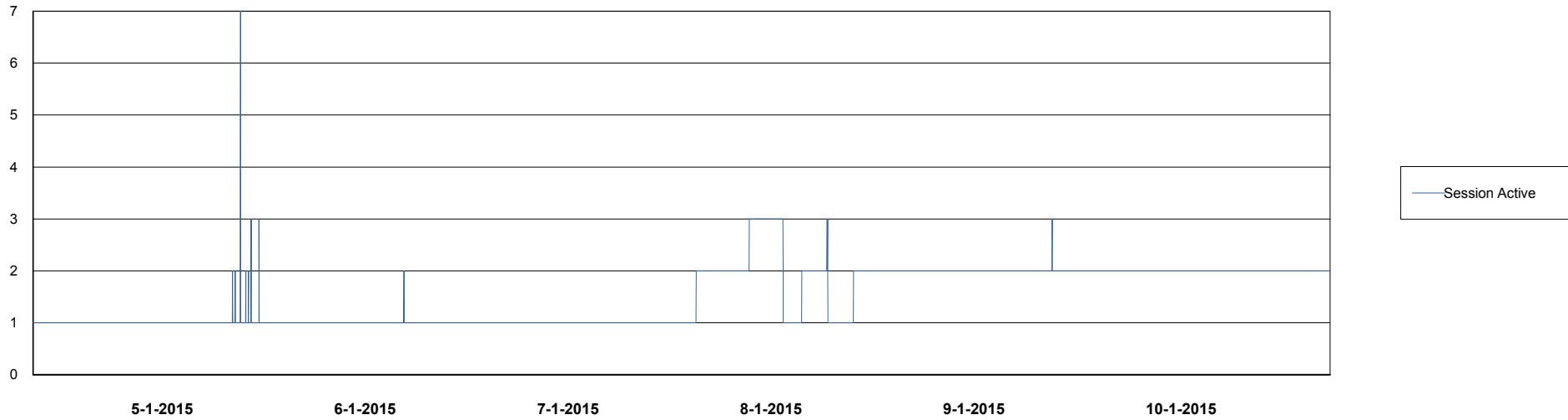
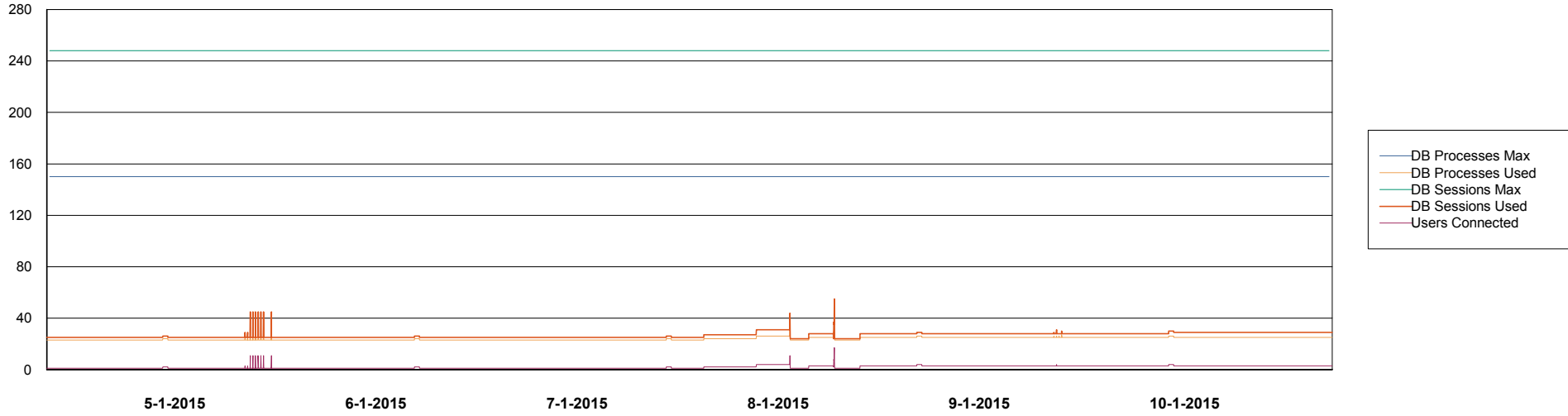


# Weekly SLA Customer Report

Customer BOH\_Production  
Database ID 55



## DATABASE PERFORMANCE BOHDB\_Standby



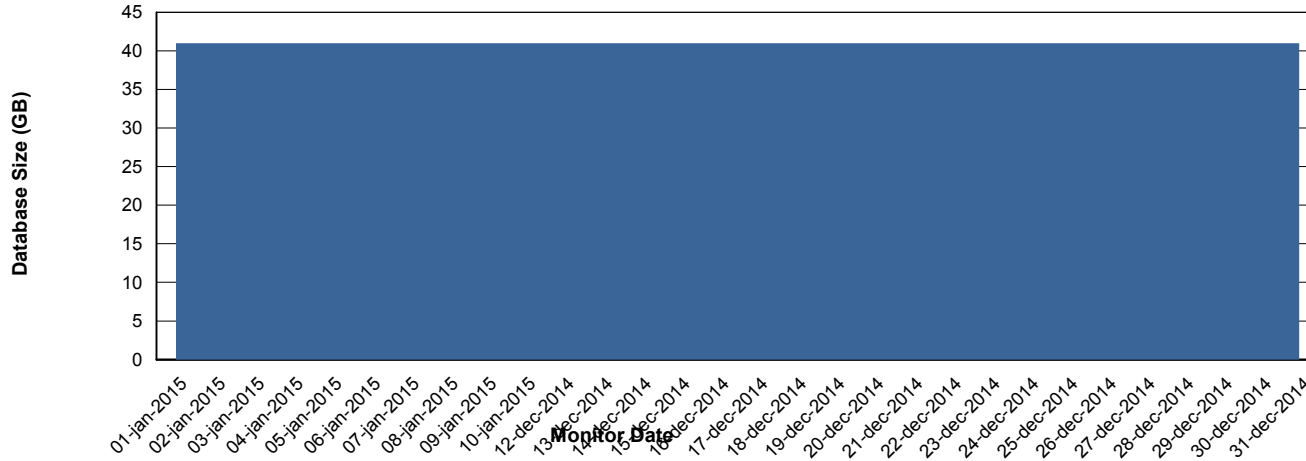
# Weekly SLA Customer Report

Customer BOH\_Production  
 Database ID 55



=====  
 DATABASE SIZE BOHDB\_Production  
 =====

## Database growth over last month



=====  
 DATABASE TABLESPACES BOHDB\_Production  
 =====

### TOTAL DATABASE SIZE PER TABLESPACE

Date	Tablespace Name	Filesize (Gb)	Usedsize (Gb)	Percentage free
10-1-2015	ABSDATA	16	12	25
	INDX	32	28	13
9-1-2015	ABSDATA	16	12	25
	INDX	32	28	13
8-1-2015	ABSDATA	16	12	25
	INDX	32	28	13
7-1-2015	ABSDATA	16	12	25
	INDX	32	28	13
6-1-2015	ABSDATA	16	12	25
	INDX	32	28	13
5-1-2015	ABSDATA	16	12	25
	INDX	32	28	13
4-1-2015	ABSDATA	16	12	25
	INDX	32	27	16

# Weekly SLA Customer Report

Customer BOH\_Production  
Database ID 55



=====  
STANDBY DATABASE HEALTH BOH\_Production  
=====

### Recovery lag for last 7 days

