

Weekly SLA Customer Report

Customer BCH Production
 Database ID 28



=====
 HARDDISK USAGE BCH_PRD_ORCDB1
 =====

	Total disk space on C (GB)	Free disk space on C (GB)	Total disk space on D (GB)	Free disk space on D (GB)
10-1-2015	278	144	278	105
9-1-2015	278	145	278	101
8-1-2015	278	145	278	94
7-1-2015	278	145	278	97
6-1-2015	278	145	278	100
5-1-2015	278	145	278	103
4-1-2015	278	145	278	104

=====
 HARDDISK USAGE BCH_PRD_ORCDB2
 =====

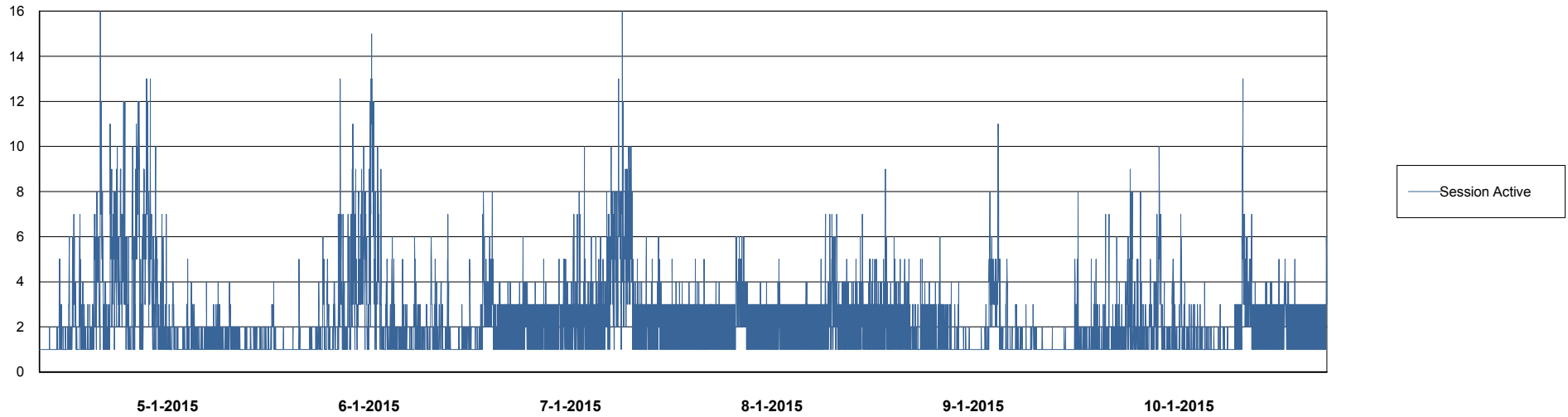
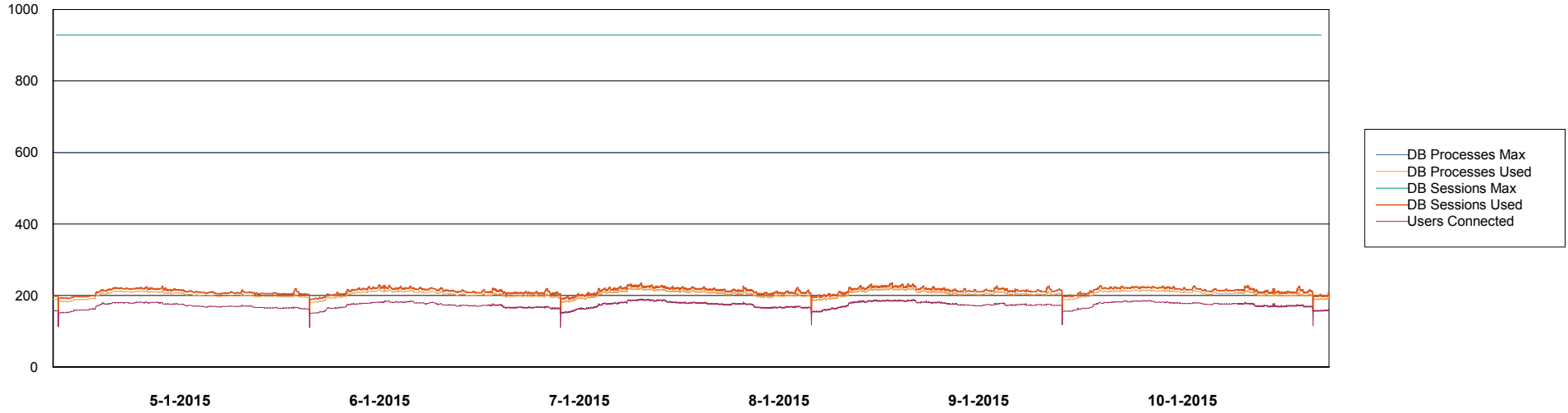
	Total disk space on C (GB)	Free disk space on C (GB)	Total disk space on D (GB)	Free disk space on D (GB)
10-1-2015	278	173	278	102
9-1-2015	278	173	278	98
8-1-2015	278	173	278	91
7-1-2015	278	174	278	94
6-1-2015	278	174	278	97
5-1-2015	278	174	278	100
4-1-2015	278	174	278	101

Weekly SLA Customer Report

Customer BCH Production
Database ID 28



DATABASE PERFORMANCE BCHDB_Production

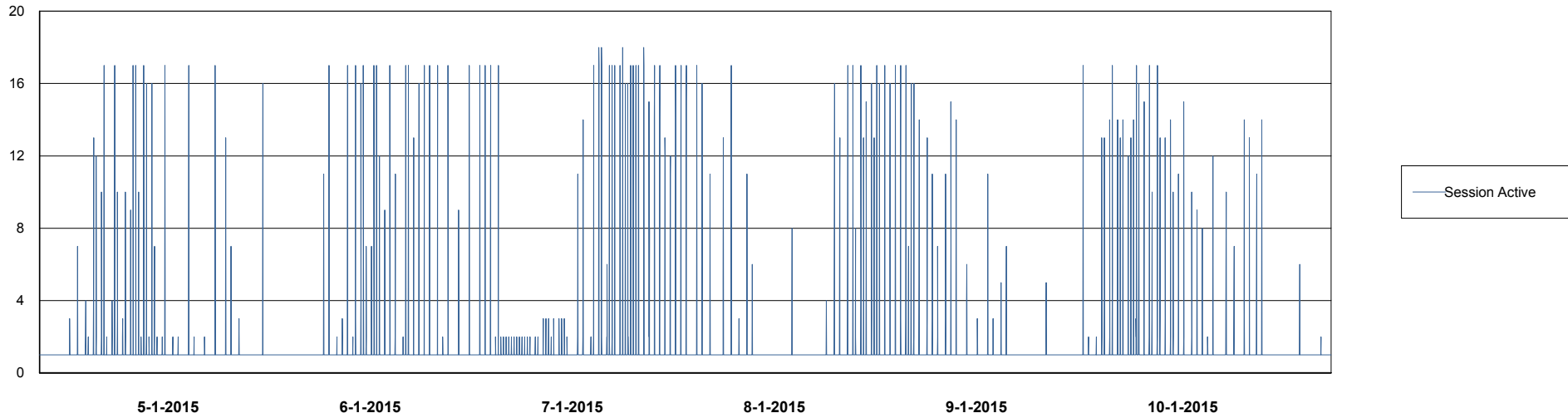
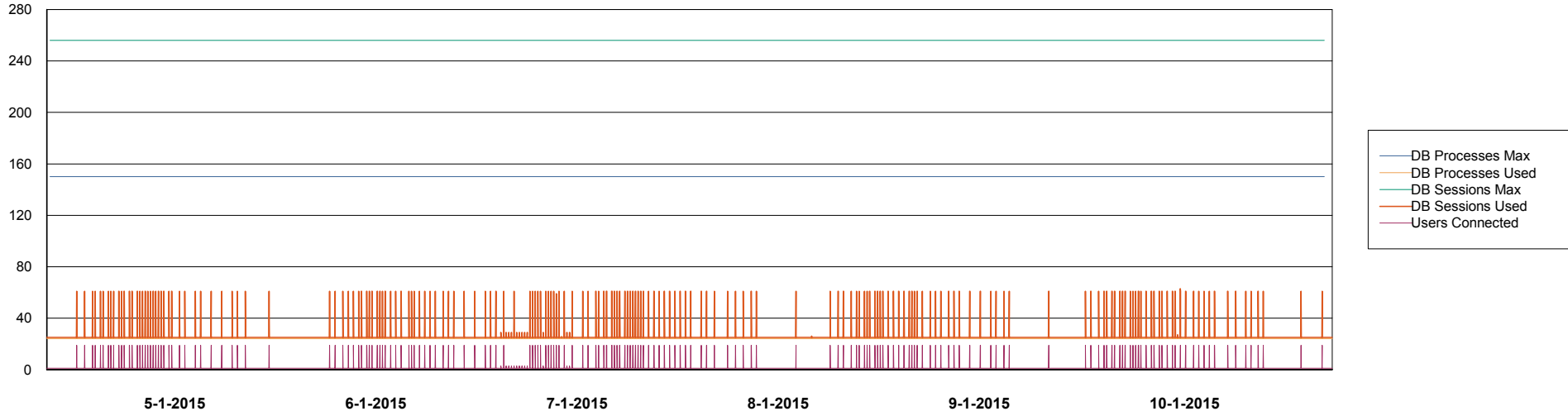


Weekly SLA Customer Report

Customer BCH Production
Database ID 28



=====
DATABASE PERFORMANCE BCHDB_Standby
=====



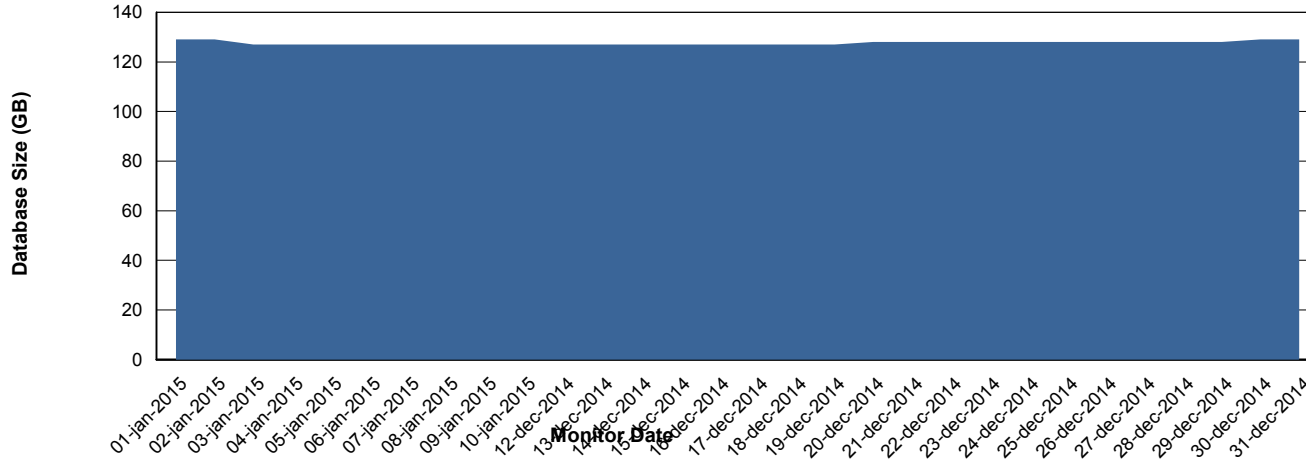
Weekly SLA Customer Report

Customer BCH Production
 Database ID 28



=====
 DATABASE SIZE BCHDB_Production
 =====

Database growth over last month



=====
 DATABASE TABLESPACES BCHDB_Production
 =====

TOTAL DATABASE SIZE PER TABLESPACE

Date	Tablespace Name	Filesize (Gb)	Usedsize (Gb)	Percentage free
10-1-2015	ABSDATA	42	24	43
	INDX	138	102	26
9-1-2015	ABSDATA	42	24	43
	INDX	138	102	26
8-1-2015	ABSDATA	42	24	43
	INDX	138	101	27
7-1-2015	ABSDATA	42	24	43
	INDX	138	101	27
6-1-2015	ABSDATA	42	24	43
	INDX	138	101	27
5-1-2015	ABSDATA	42	24	43
	INDX	138	101	27
4-1-2015	ABSDATA	42	24	43
	INDX	138	101	27

Weekly SLA Customer Report

Customer BCH Production
Database ID 28



=====
STANDBY DATABASE HEALTH BCH Production
=====

Recovery lag for last 7 days

