

Weekly SLA Customer Report

Customer JWR Production
 Database ID 43



=====
 HARDDISK USAGE JWR_PRD_JWR-ABS-01
 =====

	Used disk space on / (GB)	Total disk space on / (GB)	Free disk space on / (GB)
3-1-2015	27	49	20
2-1-2015	27	49	20
1-1-2015	27	49	20
31-12-2014	27	49	20
30-12-2014	27	49	20
29-12-2014	27	49	20
28-12-2014	27	49	20

=====
 HARDDISK USAGE JWR_PRD_JWR-ABS-02
 =====

	Used disk space on / (GB)	Total disk space on / (GB)	Free disk space on / (GB)
3-1-2015	27	49	20
2-1-2015	27	49	20
1-1-2015	27	49	20
31-12-2014	27	49	20
30-12-2014	27	49	20
29-12-2014	27	49	20
28-12-2014	27	49	20

Weekly SLA Customer Report

Customer JWR Production
 Database ID 43



=====
 HARDDISK USAGE JWR_PRD_JWR-ODB-01
 =====

	Used disk space on / (GB)	Total disk space on / (GB)	Free disk space on / (GB)
3-1-2015	75	90	10
2-1-2015	75	90	10
1-1-2015	76	90	10
31-12-2014	76	90	10
30-12-2014	76	90	10
29-12-2014	76	90	9
28-12-2014	76	90	10

=====
 HARDDISK USAGE JWR_PRD_JWR-ODB-02
 =====

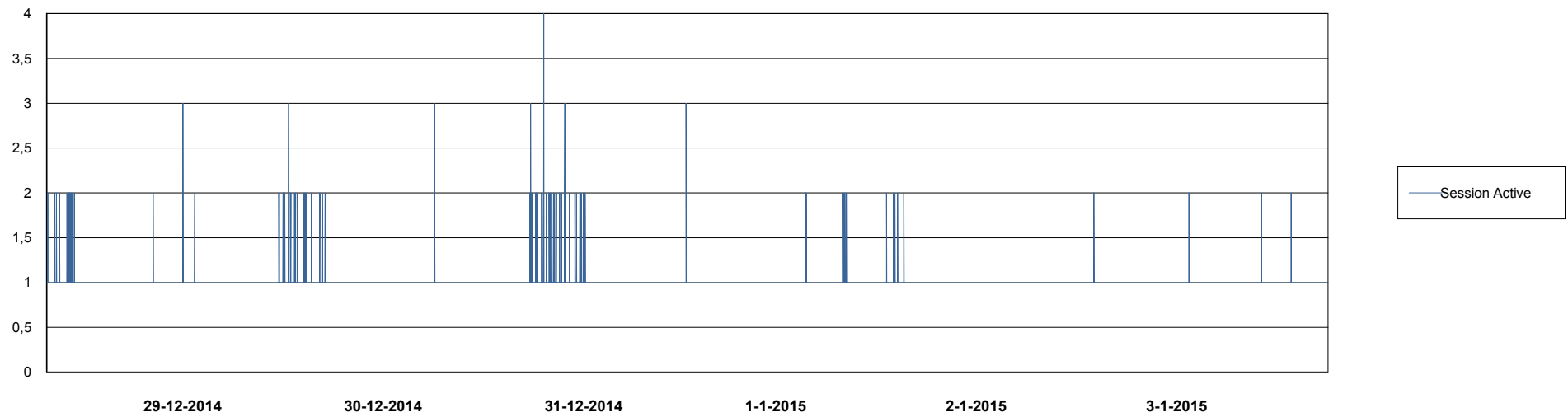
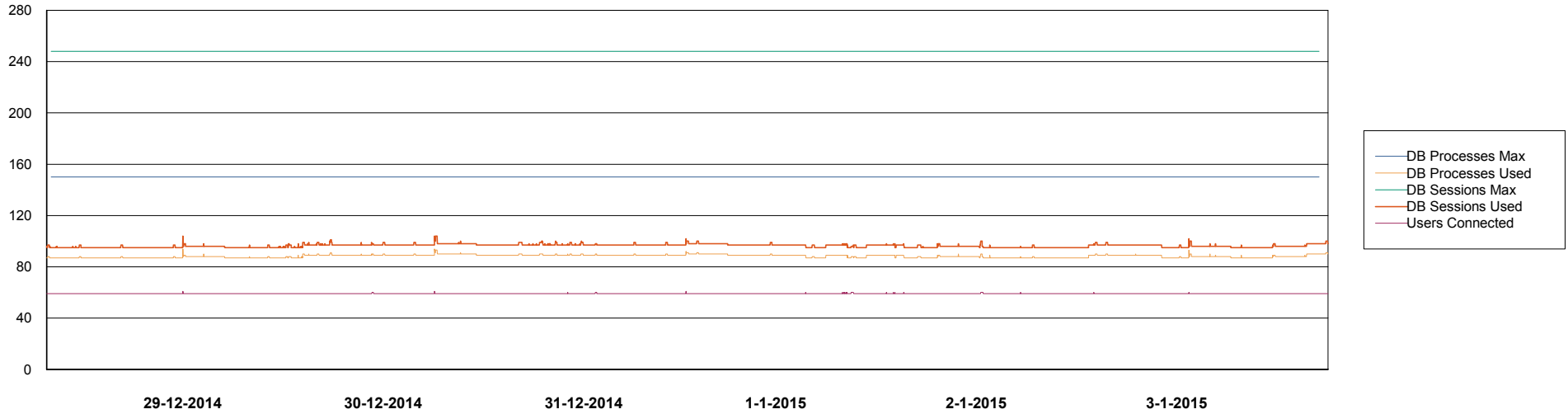
	Used disk space on / (GB)	Total disk space on / (GB)	Free disk space on / (GB)
3-1-2015	90	138	40
2-1-2015	91	138	40
1-1-2015	91	138	40
31-12-2014	91	138	40
30-12-2014	91	138	40
29-12-2014	92	138	39
28-12-2014	91	138	40

Weekly SLA Customer Report

Customer JWR Production
Database ID 43



DATABASE PERFORMANCE JWRDB_Production



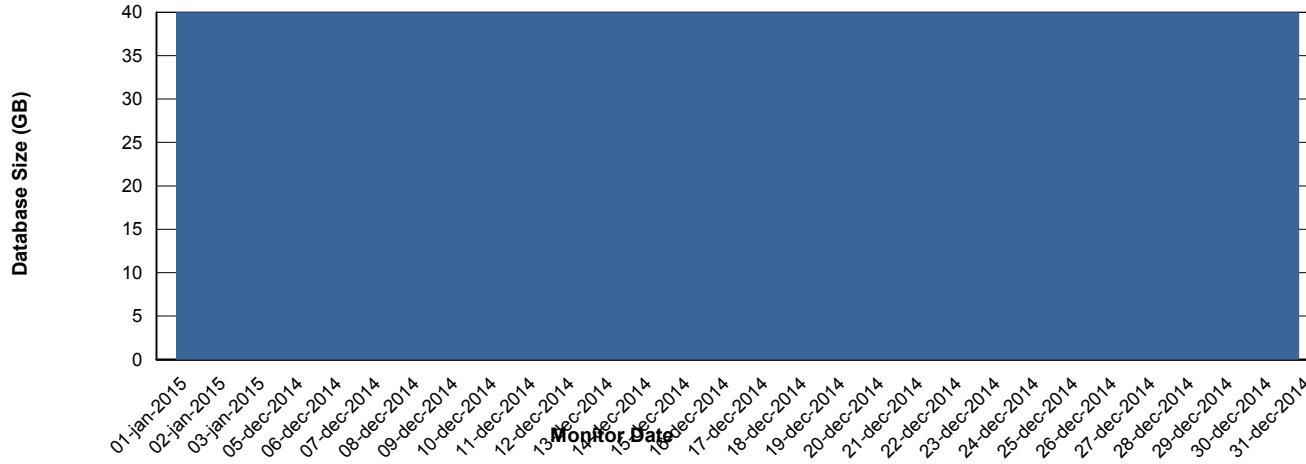
Weekly SLA Customer Report

Customer JWR Production
 Database ID 43



=====
 DATABASE SIZE JWRDB_Production
 =====

Database growth over last month



=====
 DATABASE TABLESPACES JWRDB_Production
 =====

TOTAL DATABASE SIZE PER TABLESPACE

Date	Tablespace Name	Filesize (Gb)	Usedsize (Gb)	Percentage free
3-1-2015	ABSDATA	15	12	20
	INDX	32	28	13
2-1-2015	ABSDATA	15	12	20
	INDX	32	28	13
1-1-2015	ABSDATA	15	12	20
	INDX	32	28	13
31-12-2014	ABSDATA	15	12	20
	INDX	32	28	13
30-12-2014	ABSDATA	15	12	20
	INDX	32	28	13
29-12-2014	ABSDATA	15	12	20
	INDX	32	28	13
28-12-2014	ABSDATA	15	12	20
	INDX	32	28	13

Weekly SLA Customer Report

Customer JWR Production
Database ID 43



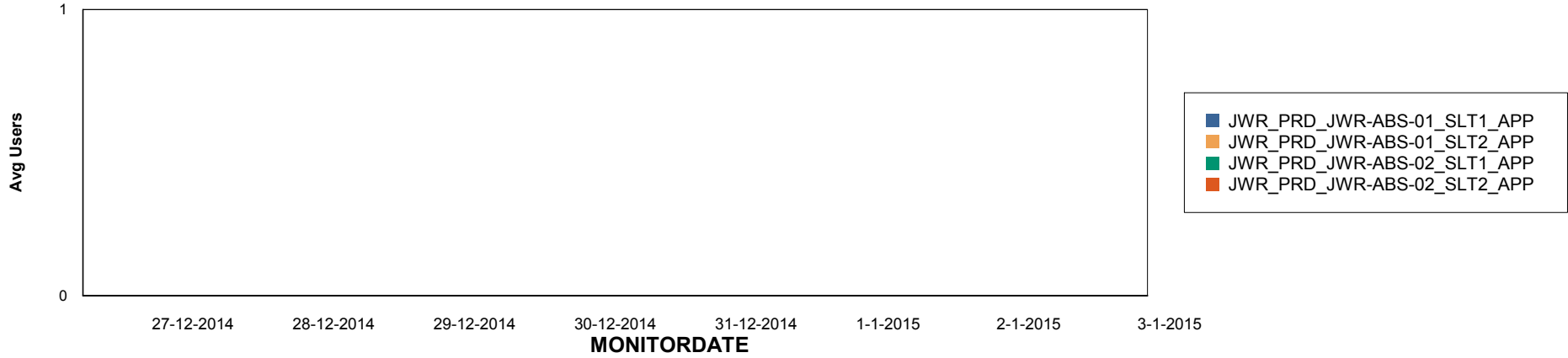
Weekly SLA Customer Report

Customer JWR Production
Database ID 43

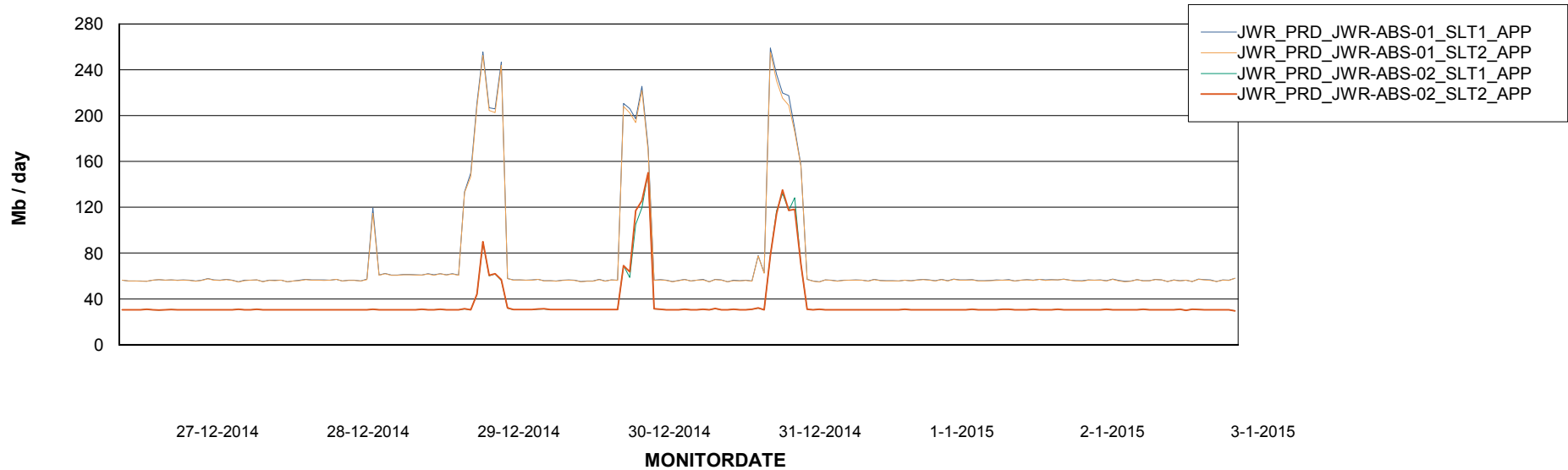


=====
ABSolute Application Server Services
=====

Disaster per ABS Server



Avg memory used per ABS Server Service



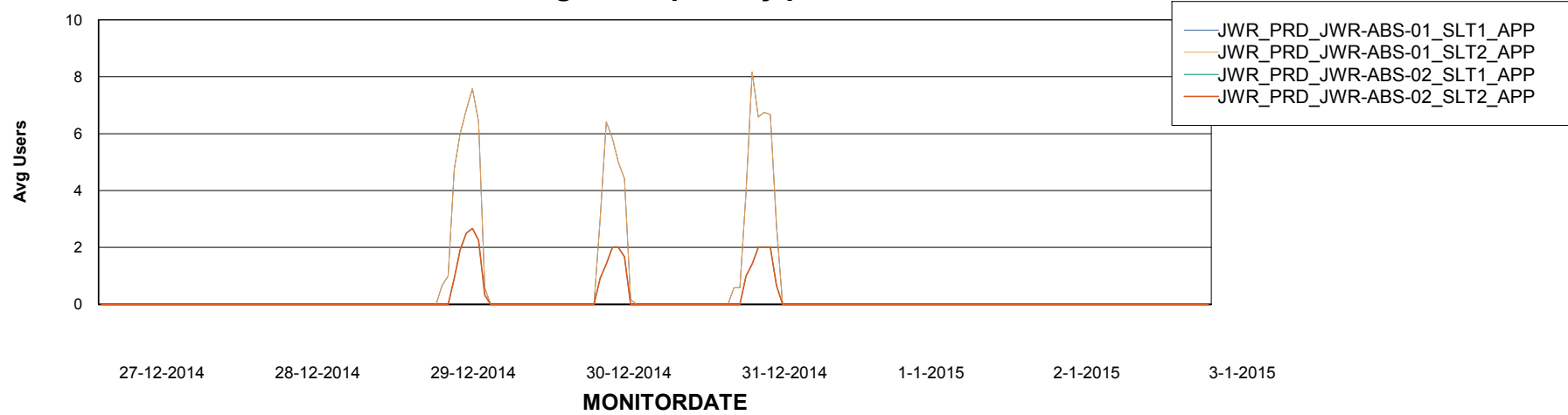
Weekly SLA Customer Report

Customer JWR Production
Database ID 43



=====
ABSolute Application Server Services
=====

Avg users per day per ABS server



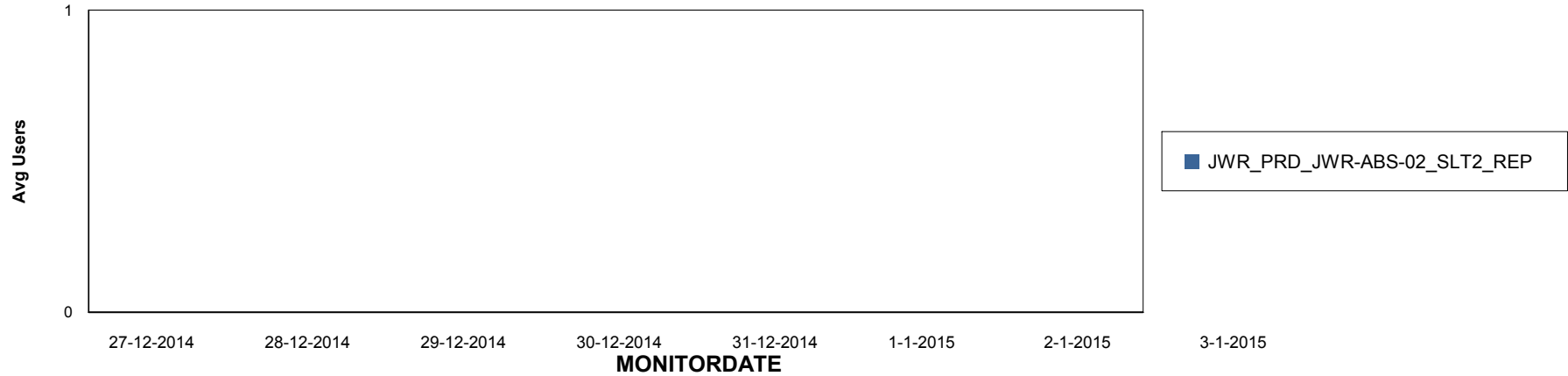
Weekly SLA Customer Report

Customer JWR Production
Database ID 43

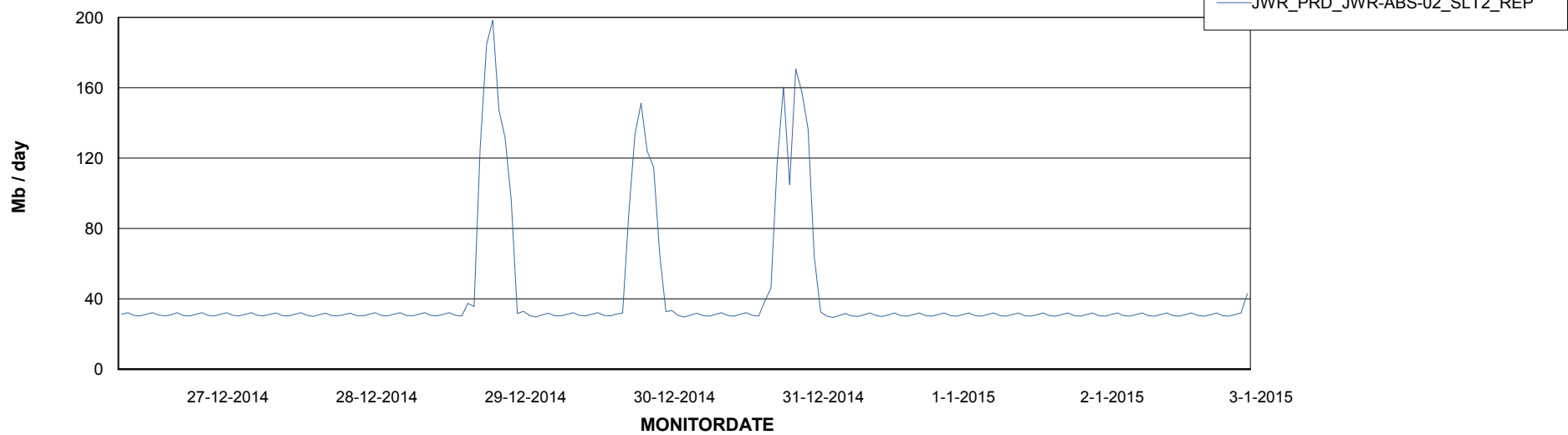


=====
ABSolute Application ReportServer Services
=====

Disaster per ReportServer



Avg memory used per ReportServer Service



Weekly SLA Customer Report

Customer JWR Production
Database ID 43



Disaster per ABS component

