

Weekly SLA Customer Report

Customer BOH_Production
 Database ID 55



=====
 HARDDISK USAGE BOH_PRD_ORACLE1
 =====

	Total disk space on C (GB)	Free disk space on C (GB)	Total disk space on D (GB)	Free disk space on D (GB)	Total disk space on E (GB)	Free disk space on E (GB)
3-1-2015	80	13	100	67	150	64
2-1-2015	80	13	100	67	150	65
1-1-2015	80	13	100	67	150	66
31-12-2014	80	13	100	67	150	66
30-12-2014	80	13	100	67	150	67
29-12-2014	80	13	100	67	150	68
28-12-2014	80	13	100	67	150	69

=====
 HARDDISK USAGE BOH_PRD_ORACLE2
 =====

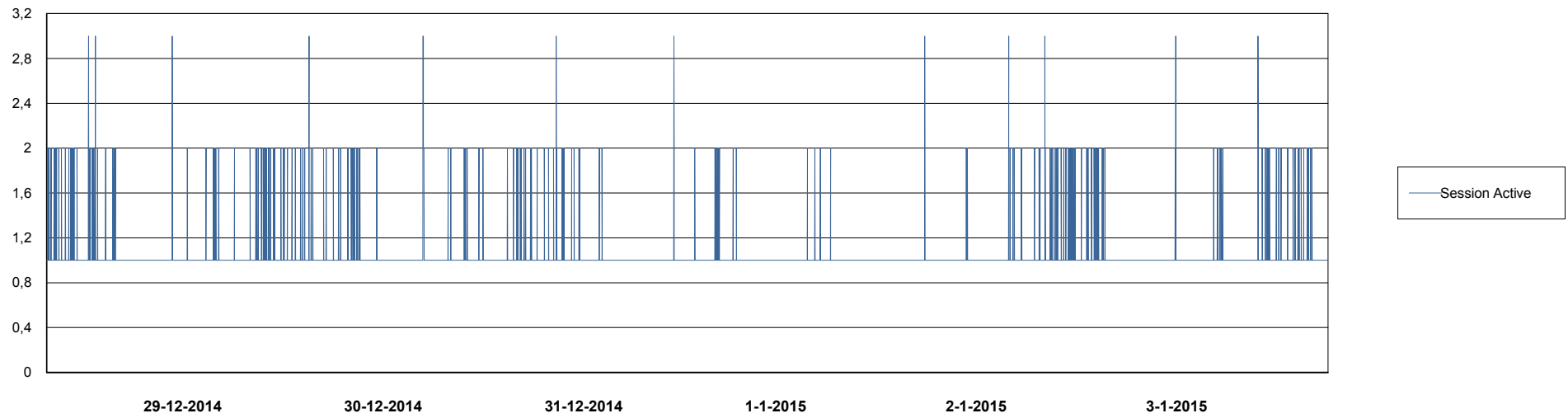
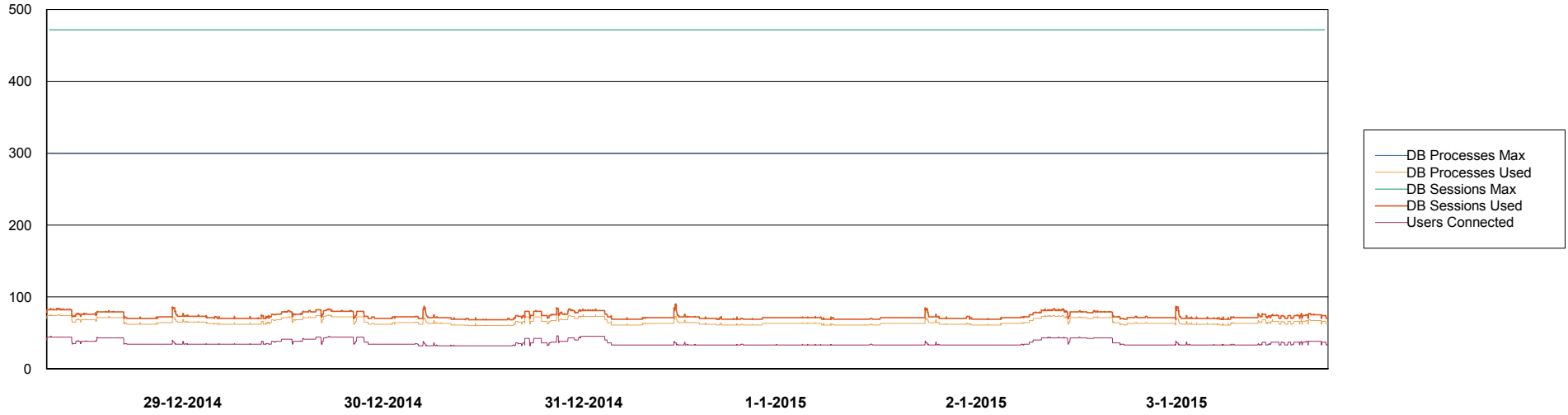
	Total disk space on C (GB)	Free disk space on C (GB)	Total disk space on D (GB)	Free disk space on D (GB)	Total disk space on E (GB)	Free disk space on E (GB)
3-1-2015	67	19	227	195	329	271
2-1-2015	67	19	227	195	329	272
1-1-2015	67	19	227	195	329	273
31-12-2014	67	19	227	195	329	273
30-12-2014	67	19	227	195	329	274
29-12-2014	67	19	227	195	329	275
28-12-2014	67	19	227	195	329	276

Weekly SLA Customer Report

Customer BOH_Production
Database ID 55



DATABASE PERFORMANCE BOHDB_Production

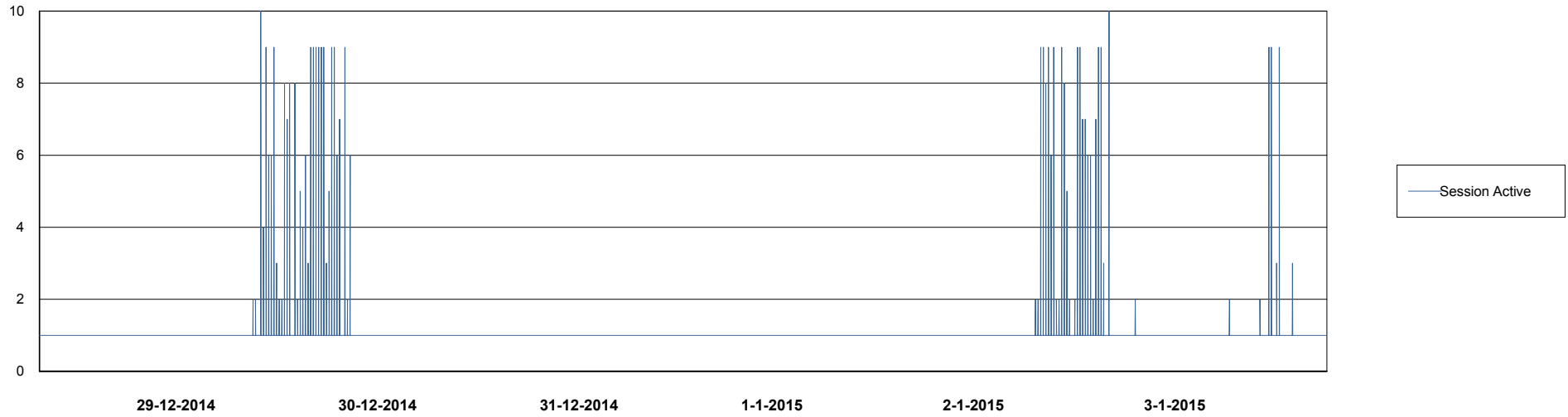
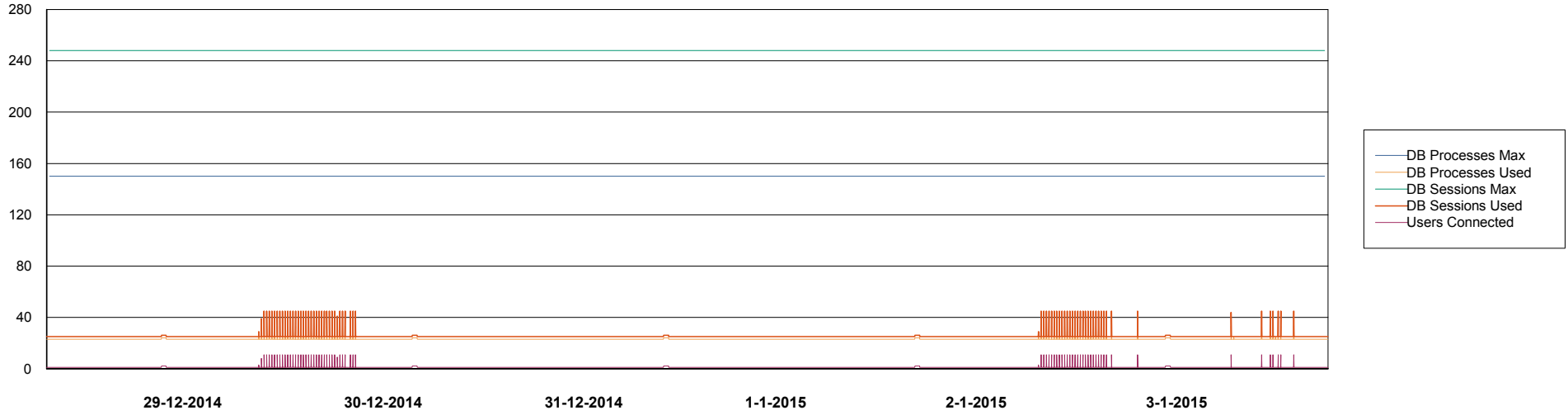


Weekly SLA Customer Report

Customer BOH_Production
Database ID 55



DATABASE PERFORMANCE BOHDB_Standby



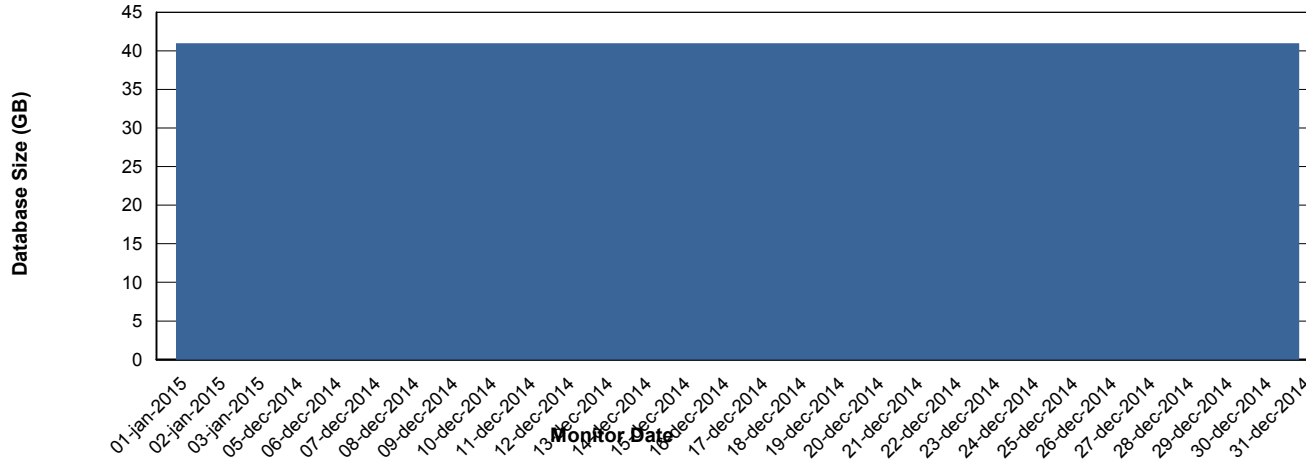
Weekly SLA Customer Report

Customer BOH_Production
 Database ID 55



=====
 DATABASE SIZE BOHDB_Production
 =====

Database growth over last month



=====
 DATABASE TABLESPACES BOHDB_Production
 =====

TOTAL DATABASE SIZE PER TABLESPACE

Date	Tablespace Name	Filesize (Gb)	Usedsize (Gb)	Percentage free
3-1-2015	ABSDATA	16	12	25
	INDX	32	27	16
2-1-2015	ABSDATA	16	12	25
	INDX	32	27	16
1-1-2015	ABSDATA	16	12	25
	INDX	32	27	16
31-12-2014	ABSDATA	16	12	25
	INDX	32	27	16
30-12-2014	ABSDATA	16	12	25
	INDX	32	27	16
29-12-2014	ABSDATA	16	12	25
	INDX	32	27	16
28-12-2014	ABSDATA	16	12	25
	INDX	32	27	16

Weekly SLA Customer Report

Customer BOH_Production
Database ID 55



=====
STANDBY DATABASE HEALTH BOH_Production
=====

Recovery lag for last 7 days

