

Weekly SLA Customer Report

Customer BCH Production
 Database ID 28



=====
 HARDDISK USAGE BCH_PRD_ORCDB1
 =====

	Total disk space on C (GB)	Free disk space on C (GB)	Total disk space on D (GB)	Free disk space on D (GB)
3-1-2015	278	144	278	106
2-1-2015	278	145	278	102
1-1-2015	278	145	278	93
31-12-2014	278	145	278	95
30-12-2014	278	145	278	98
29-12-2014	278	152	278	112
28-12-2014	278	158	278	122

=====
 HARDDISK USAGE BCH_PRD_ORCDB2
 =====

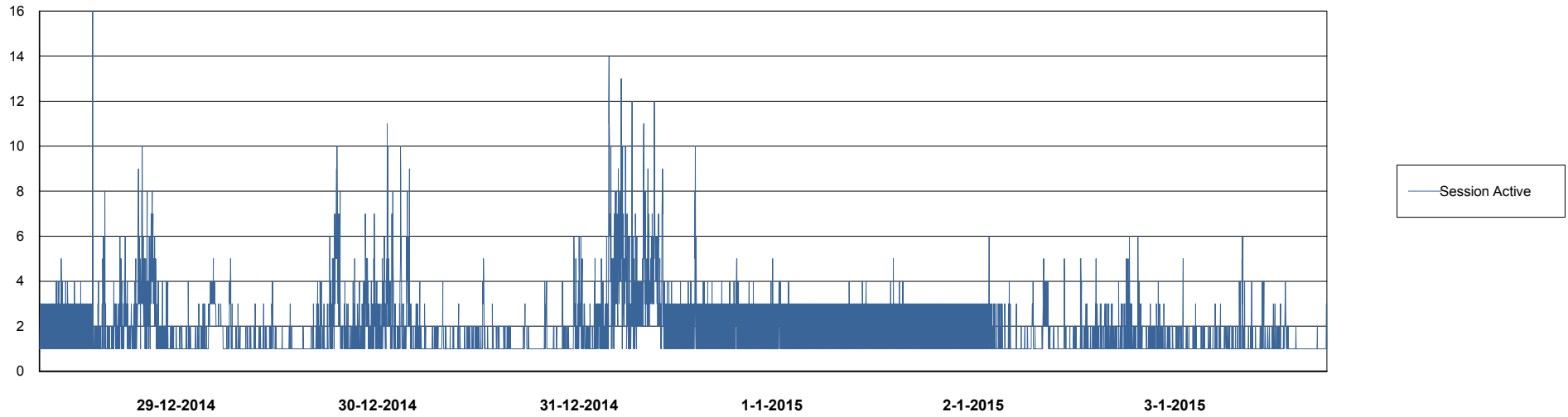
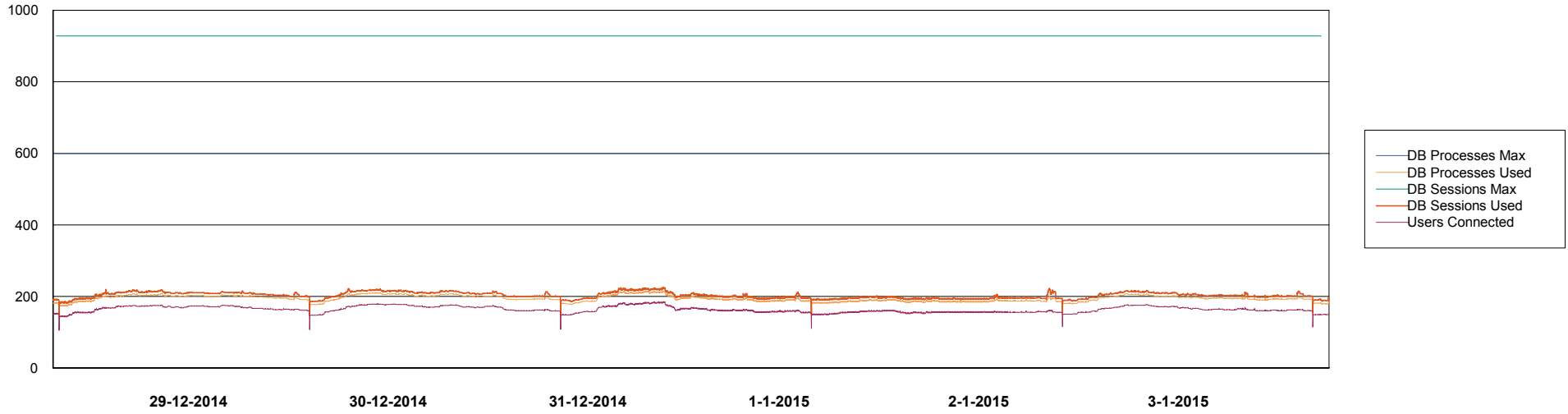
	Total disk space on C (GB)	Free disk space on C (GB)	Total disk space on D (GB)	Free disk space on D (GB)
3-1-2015	278	174	278	103
2-1-2015	278	174	278	99
1-1-2015	278	174	278	90
31-12-2014	278	174	278	92
30-12-2014	278	174	278	95
29-12-2014	278	182	278	110
28-12-2014	278	188	278	119

Weekly SLA Customer Report

Customer BCH Production
Database ID 28



DATABASE PERFORMANCE BCHDB_Production

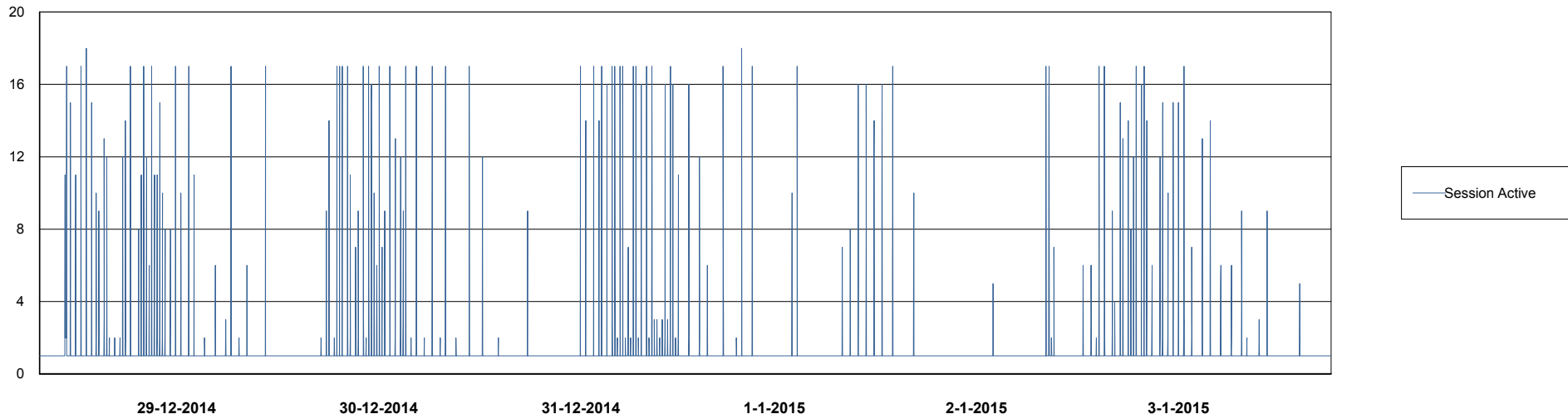
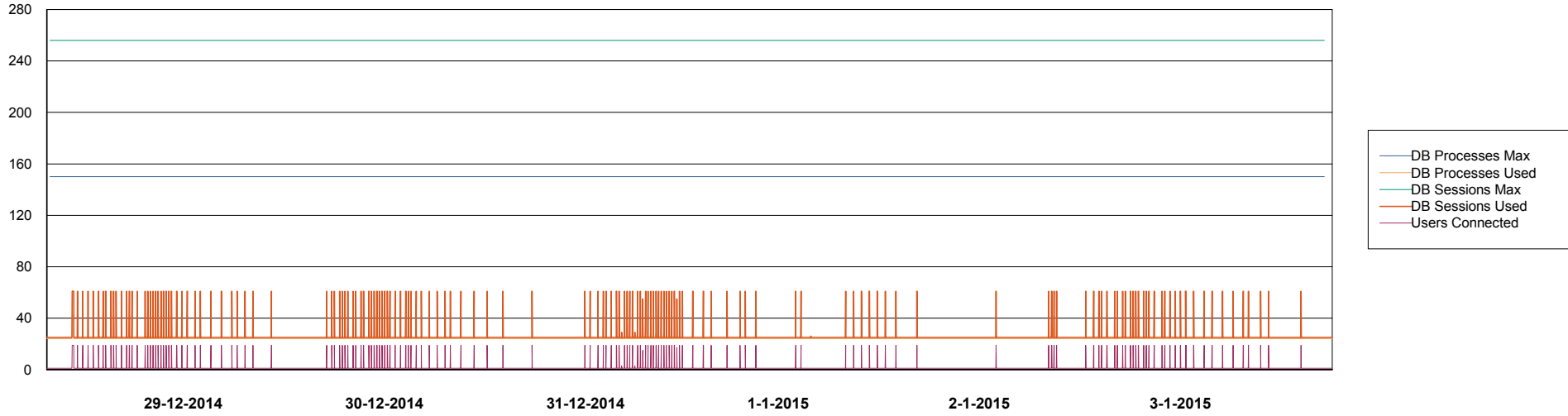


Weekly SLA Customer Report

Customer BCH Production
Database ID 28



DATABASE PERFORMANCE BCHDB_Standby



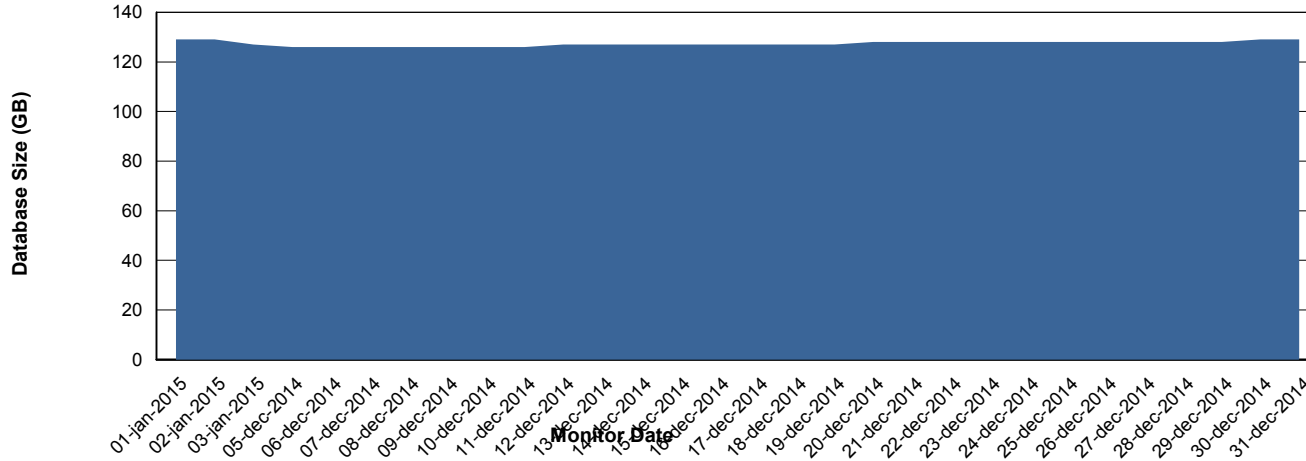
Weekly SLA Customer Report

Customer BCH Production
 Database ID 28



=====
 DATABASE SIZE BCHDB_Production
 =====

Database growth over last month



=====
 DATABASE TABLESPACES BCHDB_Production
 =====

TOTAL DATABASE SIZE PER TABLESPACE

Date	Tablespace Name	Filesize (Gb)	Usedsize (Gb)	Percentage free
3-1-2015	ABSDATA	42	24	43
	INDX	138	101	27
2-1-2015	ABSDATA	42	24	43
	INDX	138	103	25
1-1-2015	ABSDATA	42	24	43
	INDX	138	103	25
31-12-2014	ABSDATA	42	24	43
	INDX	138	103	25
30-12-2014	ABSDATA	42	24	43
	INDX	138	103	25
29-12-2014	ABSDATA	42	24	43
	INDX	138	103	25
28-12-2014	ABSDATA	28	24	14
	INDX	118	103	13

Weekly SLA Customer Report

Customer BCH Production
Database ID 28



=====
STANDBY DATABASE HEALTH BCH Production
=====

Recovery lag for last 7 days

