

Weekly SLA Customer Report

Customer PCO Production
 Database ID 44



=====
 HARDDISK USAGE PCO_PRD_ORACLE1
 =====

	Total disk space on C (GB)	Free disk space on C (GB)	Total disk space on D (GB)	Free disk space on D (GB)
27-12-2014	279	218	838	374
26-12-2014	279	218	838	375
25-12-2014	279	218	838	377
24-12-2014	279	218	838	379
23-12-2014	279	218	838	382
22-12-2014	279	202	838	264
21-12-2014	279	184	838	126

=====
 HARDDISK USAGE PCO_PRD_ORACLE2
 =====

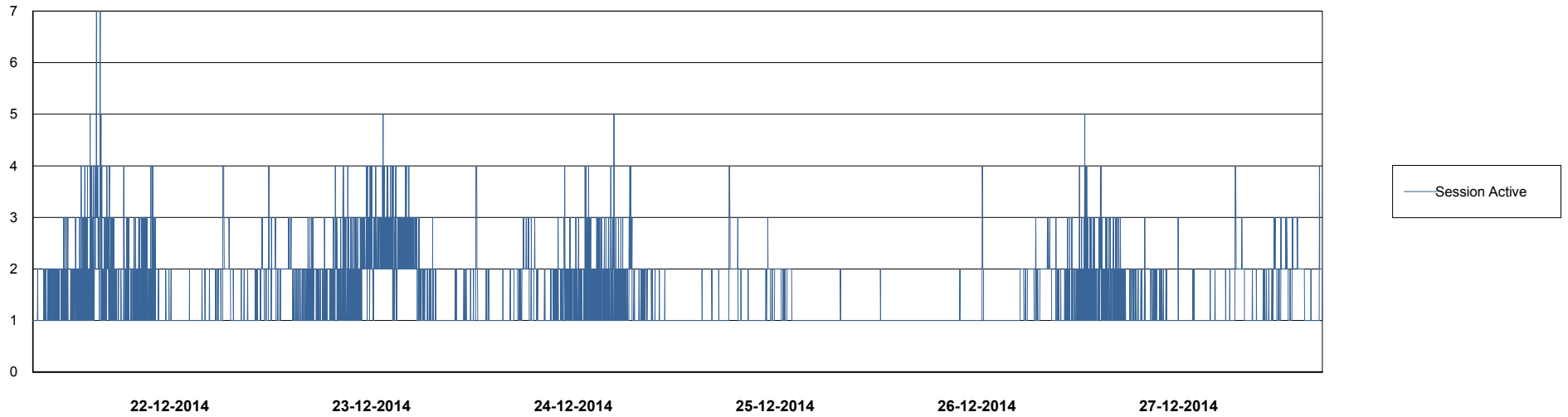
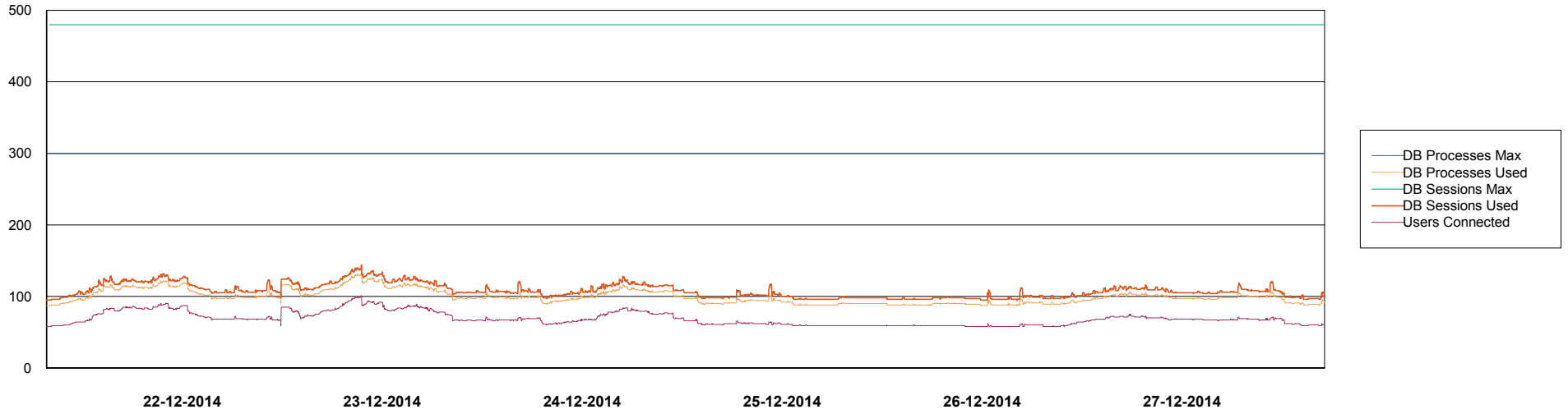
	Total disk space on C (GB)	Free disk space on C (GB)	Total disk space on D (GB)	Free disk space on D (GB)
27-12-2014	279	221	838	403
26-12-2014	279	221	838	405
25-12-2014	279	221	838	406
24-12-2014	279	221	838	408
23-12-2014	279	221	838	411
22-12-2014	279	222	838	414
21-12-2014	279	222	838	416

Weekly SLA Customer Report

Customer PCO Production
Database ID 44



DATABASE PERFORMANCE PCODB_Production

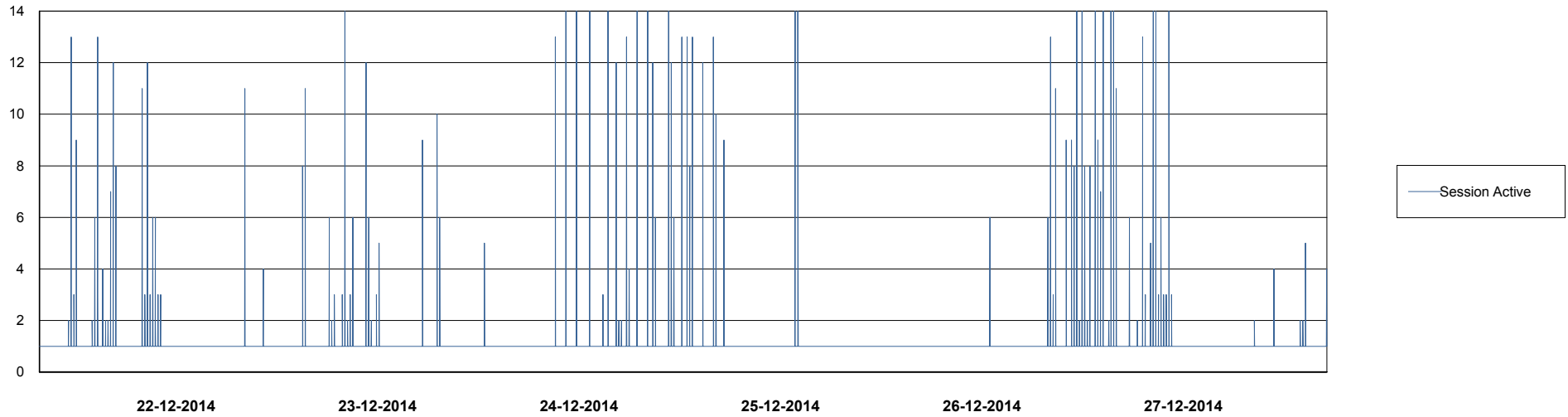
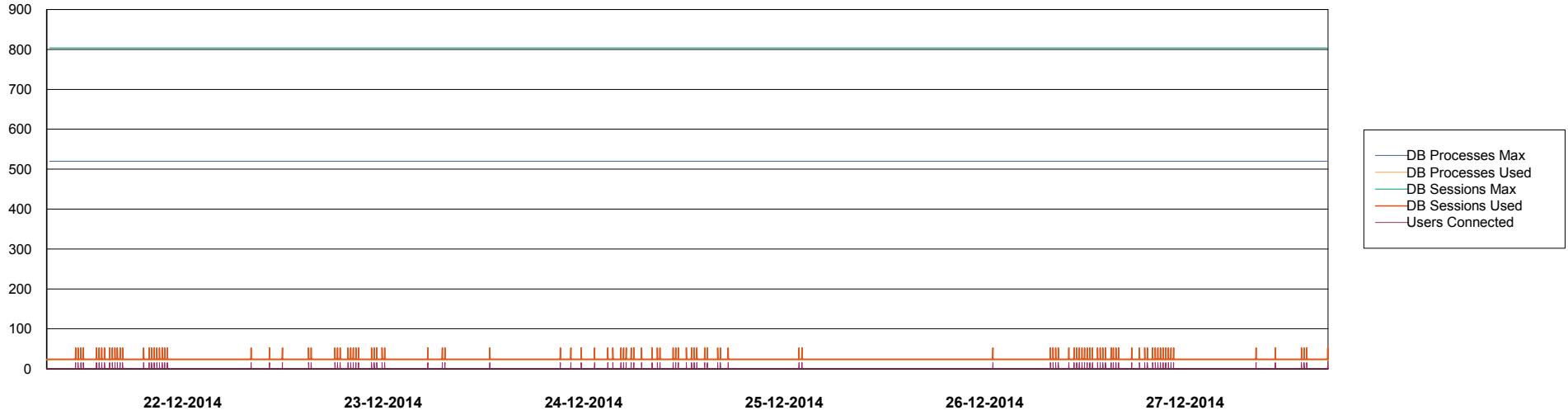


Weekly SLA Customer Report

Customer PCO Production
Database ID 44



DATABASE PERFORMANCE PCODB_Standby



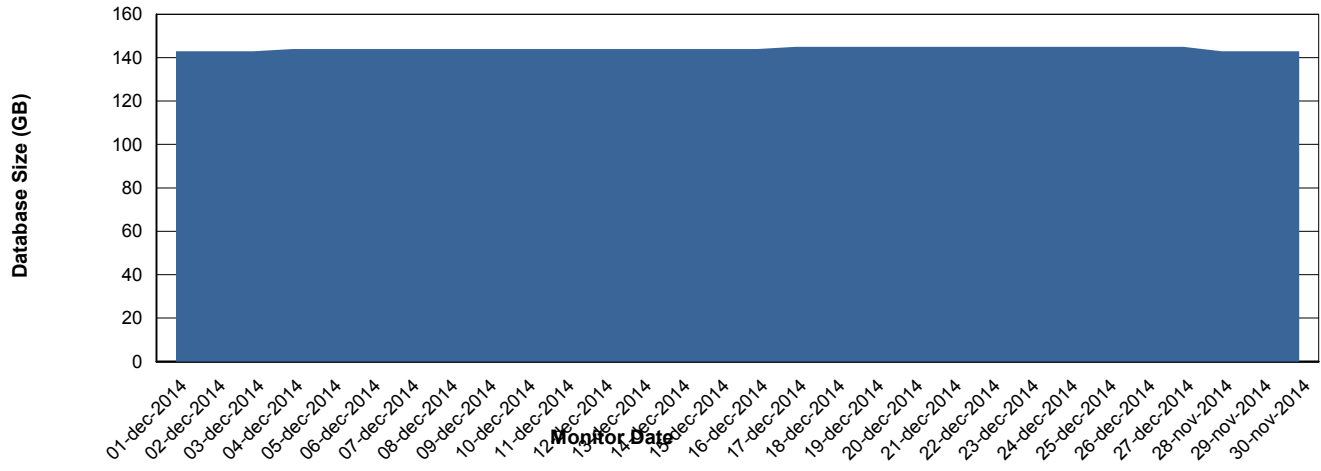
Weekly SLA Customer Report

Customer PCO Production
 Database ID 44



=====
 DATABASE SIZE PCODB_Production
 =====

Database growth over last month



=====
 DATABASE TABLESPACES PCODB_Production
 =====

TOTAL DATABASE SIZE PER TABLESPACE

Date	Tablespace Name	Filesize (Gb)	Usedsize (Gb)	Percentage free
27-12-2014	ABSDATA	72	59	18
	INDX	99	84	15
26-12-2014	ABSDATA	72	59	18
	INDX	99	84	15
25-12-2014	ABSDATA	72	59	18
	INDX	99	84	15
24-12-2014	ABSDATA	72	59	18
	INDX	99	84	15
23-12-2014	ABSDATA	72	59	18
	INDX	99	84	15
22-12-2014	ABSDATA	72	59	18
	INDX	99	84	15
21-12-2014	ABSDATA	72	59	18
	INDX	99	84	15

Weekly SLA Customer Report

Customer PCO Production
Database ID 44



=====
STANDBY DATABASE HEALTH PCO Production
=====

Recovery lag for last 7 days

