

Weekly SLA Customer Report

Customer NIX_Production
 Database ID 51



=====
 HARDDISK USAGE NIX_PRD_ABSAPP1
 =====

	Total disk space on C (GB)	Free disk space on C (GB)
27-12-2014	136	90
26-12-2014	136	90
25-12-2014	136	90
24-12-2014	136	90
23-12-2014	136	90
22-12-2014	136	90
21-12-2014	136	90

=====
 HARDDISK USAGE NIX_PRD_ABSWEB1
 =====

	Total disk space on C (GB)	Free disk space on C (GB)	Total disk space on D (GB)
27-12-2014	930	753	3
26-12-2014	930	753	3
25-12-2014	930	754	3
24-12-2014	930	754	3
23-12-2014	930	754	3
22-12-2014	930	755	3
21-12-2014	930	756	3

Weekly SLA Customer Report

Customer NIX_Production
 Database ID 51



=====
 HARDDISK USAGE NIX_PRD_ORACLE_B11
 =====

	Total disk space on C (GB)	Free disk space on C (GB)	Total disk space on D (GB)	Free disk space on D (GB)	Total disk space on E (GB)	Free disk space on E (GB)
27-12-2014	99	54	279	179	99	30
26-12-2014	99	54	279	179	99	30
25-12-2014	99	54	279	179	99	30
24-12-2014	99	54	279	179	99	30
23-12-2014	99	54	279	179	99	30
22-12-2014	99	55	279	179	99	30
21-12-2014	99	55	279	179	99	30

=====
 HARDDISK USAGE NIX_PRD_ORCDB1
 =====

	Total disk space on C (GB)	Free disk space on C (GB)	Total disk space on D (GB)	Free disk space on D (GB)	Total disk space on E (GB)	Free disk space on E (GB)
27-12-2014	136	68	136	39	136	50
26-12-2014	136	68	136	39	136	52
25-12-2014	136	68	136	39	136	51
24-12-2014	136	68	136	39	136	51
23-12-2014	136	68	136	39	136	51
22-12-2014	136	68	136	39	136	52
21-12-2014	136	68	136	39	136	52

Weekly SLA Customer Report

Customer NIX_Production
Database ID 51



HARDDISK USAGE NIX_PRD_ORCDB2

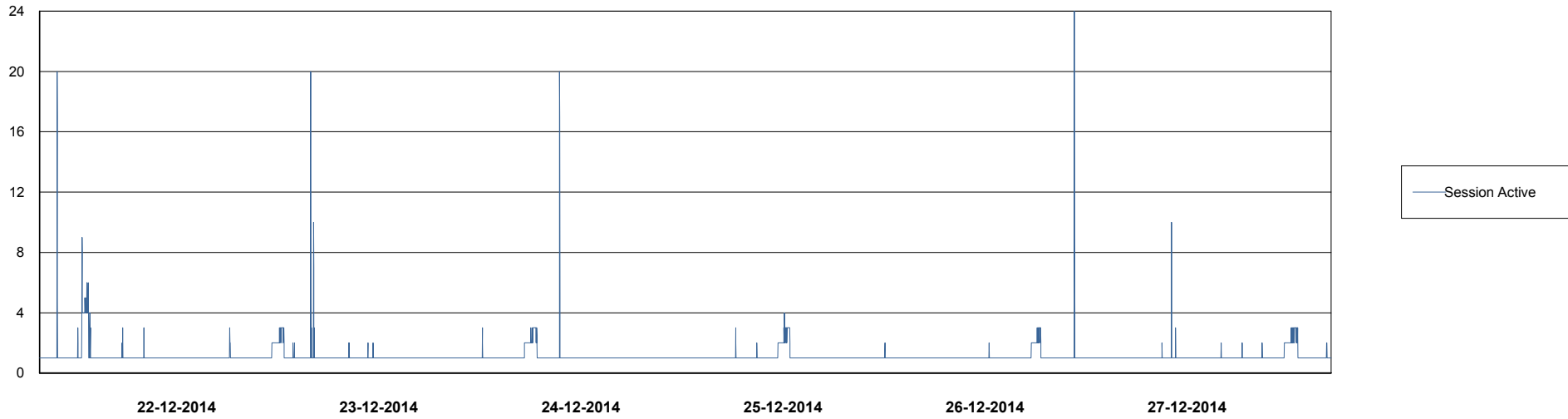
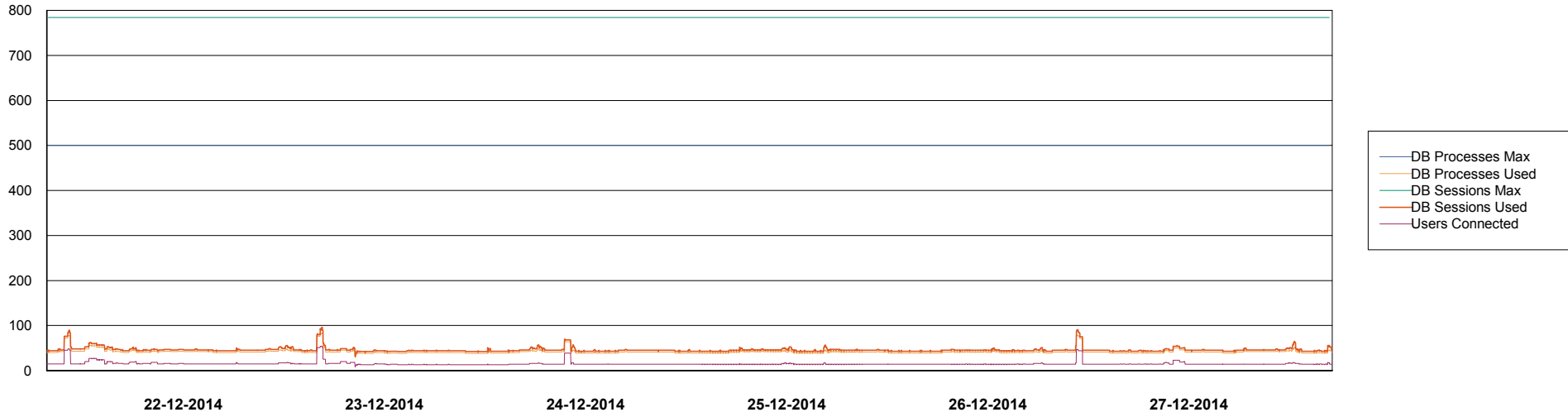
	Total disk space on C (GB)	Free disk space on C (GB)	Total disk space on D (GB)	Free disk space on D (GB)	Total disk space on E (GB)	Free disk space on E (GB)
27-12-2014	279	90	279	68	279	194
26-12-2014	279	90	279	68	279	194
25-12-2014	279	90	279	68	279	193
24-12-2014	279	90	279	68	279	192
23-12-2014	279	90	279	68	279	192
22-12-2014	279	90	279	68	279	192
21-12-2014	279	90	279	68	279	192

Weekly SLA Customer Report

Customer NIX_Production
Database ID 51



=====
DATABASE PERFORMANCE NIXDB_BI
=====



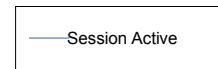
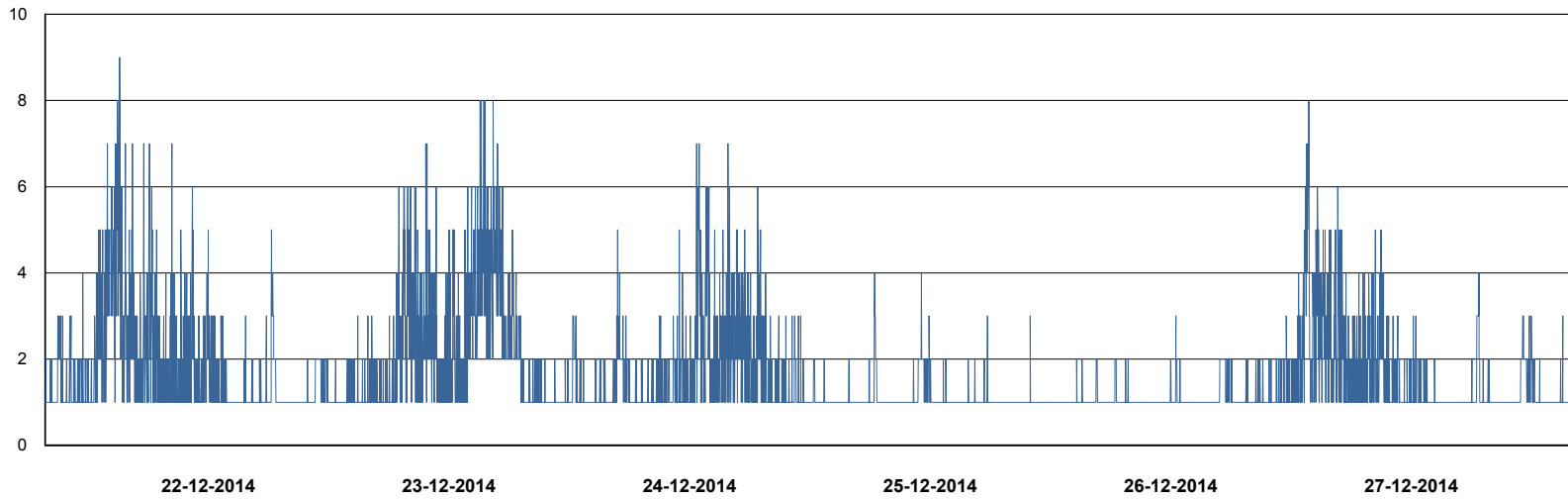
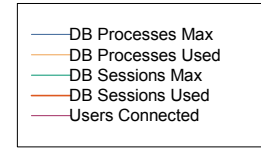
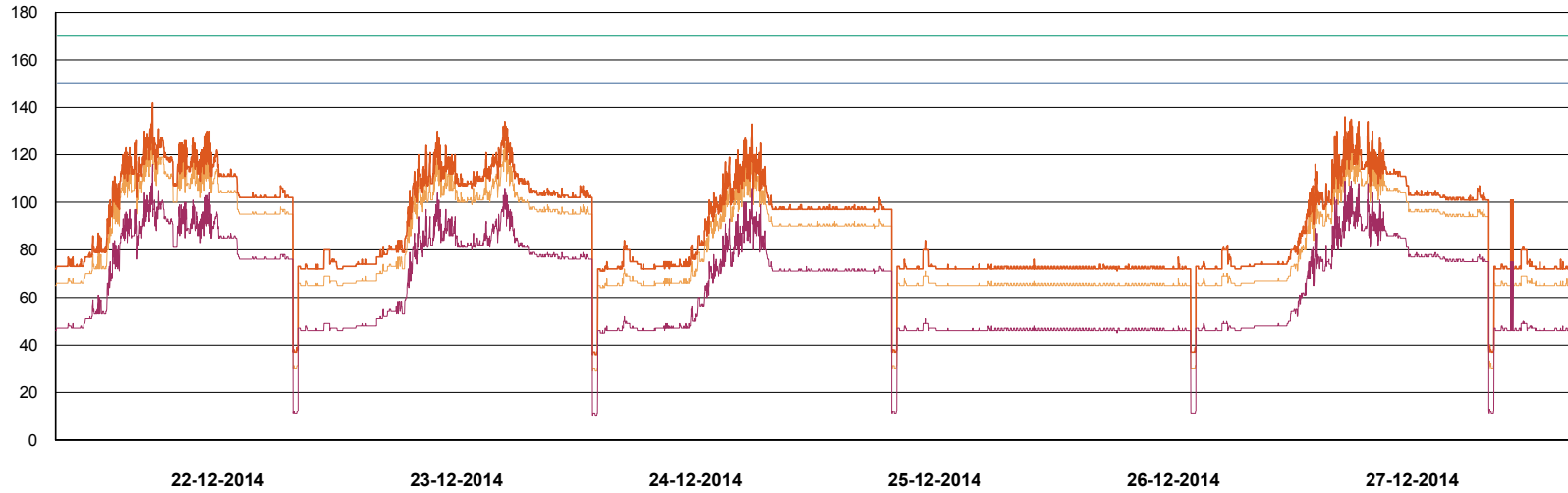
Weekly SLA Customer Report

Customer NIX_Production
Database ID 51



DATABASE PERFORMANCE

NIXDB_Production

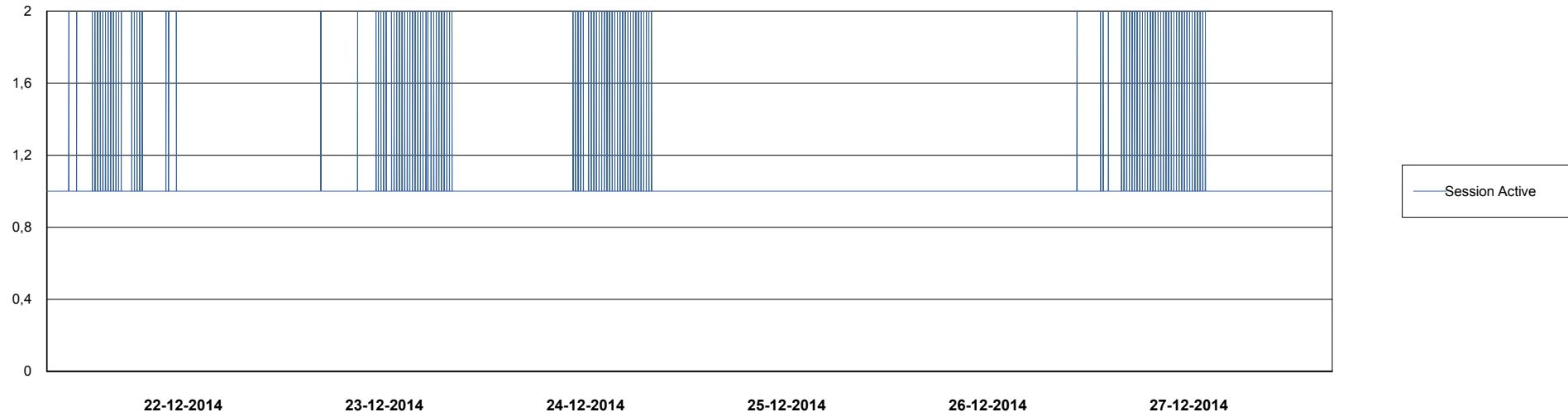
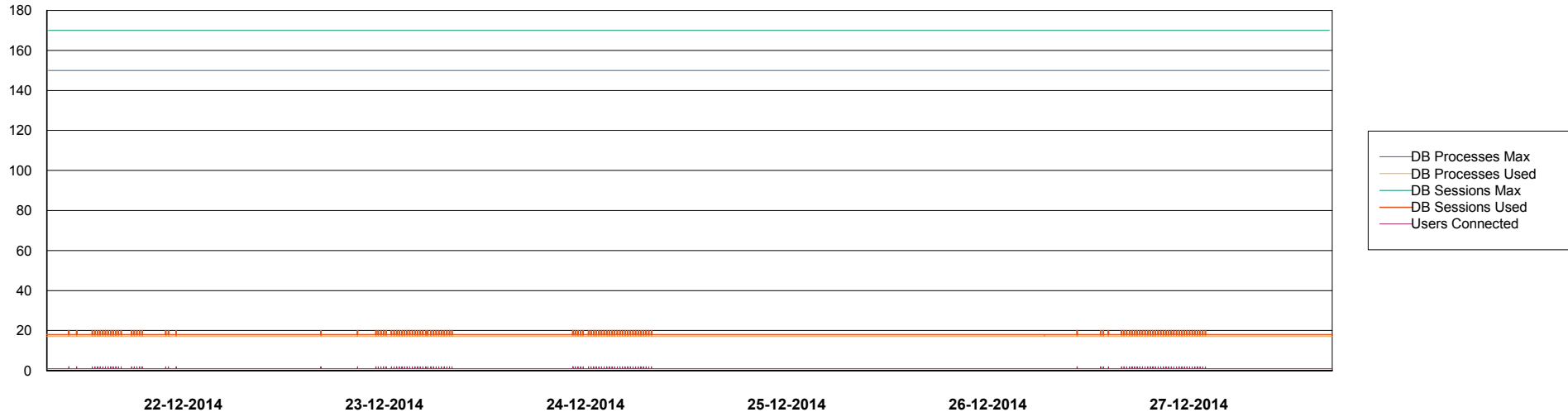


Weekly SLA Customer Report

Customer NIX_Production
Database ID 51



DATABASE PERFORMANCE NIXDB_Standby



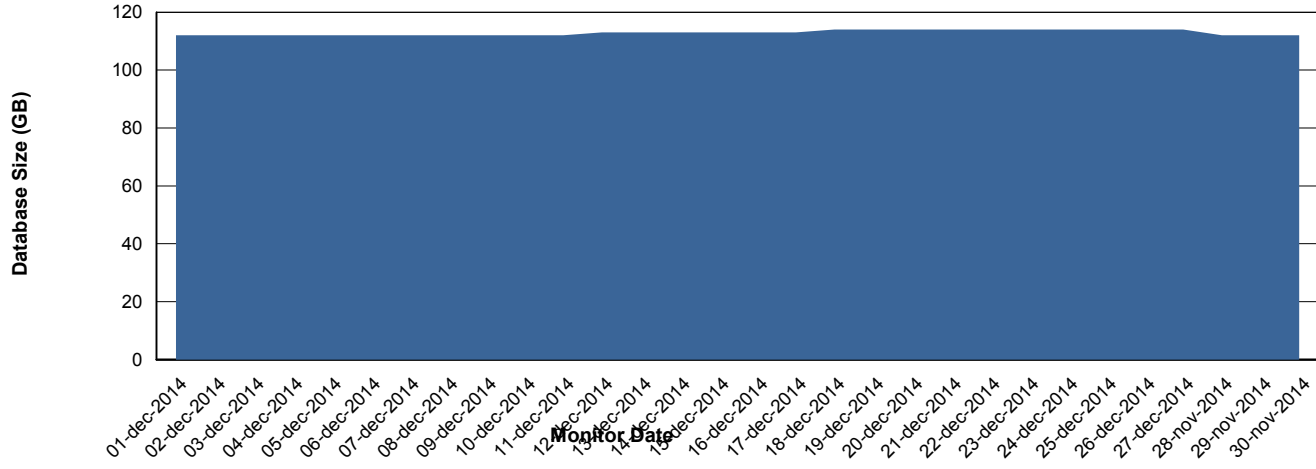
Weekly SLA Customer Report

Customer NIX_Production
Database ID 51



=====
DATABASE SIZE NIXDB_Production
=====
=====
=====
=====

Database growth over last month



Weekly SLA Customer Report

Customer NIX_Production
Database ID 51



=====
DATABASE TABLESPACES NIXDB_BI
=====

TOTAL DATABASE SIZE PER TABLESPACE

Date	Tablespace Name	Filesize (Gb)	Usedsize (Gb)	Percentage free
27-12-2014	ABSDATA	22	19	14
	INDX	40	29	28
26-12-2014	ABSDATA	22	19	14
	INDX	40	29	28
25-12-2014	ABSDATA	22	19	14
	INDX	40	29	28
24-12-2014	ABSDATA	22	19	14
	INDX	40	29	28
23-12-2014	ABSDATA	22	18	18
	INDX	40	29	28
22-12-2014	ABSDATA	22	18	18
	INDX	40	29	28
21-12-2014	ABSDATA	22	18	18
	INDX	40	29	28

Weekly SLA Customer Report

Customer NIX_Production
 Database ID 51



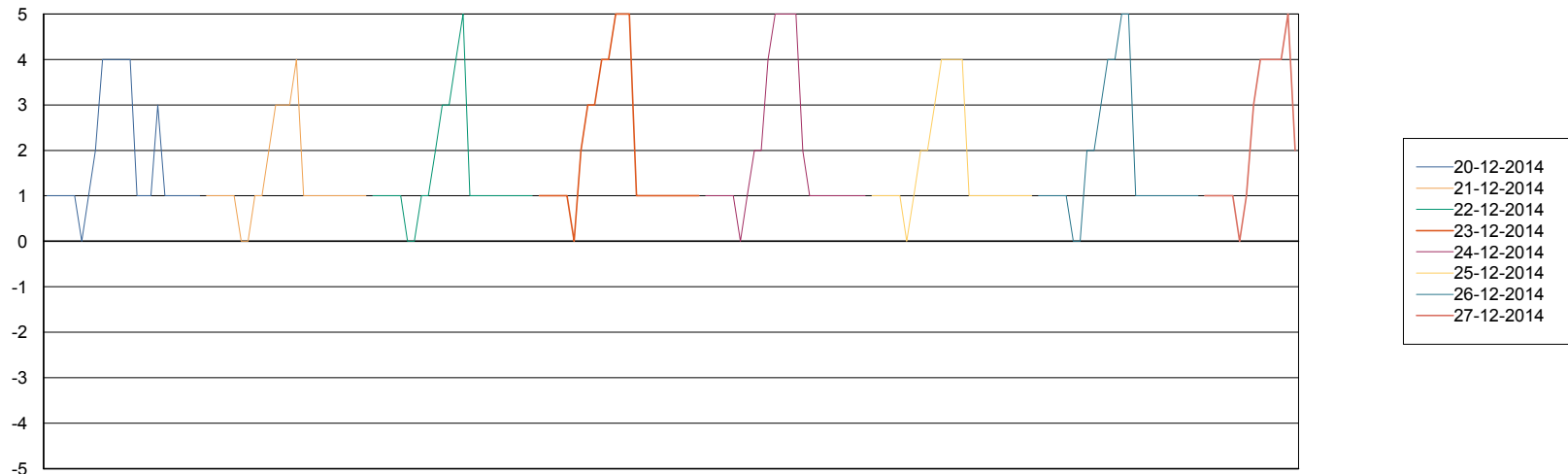
=====
 DATABASE TABLESPACES NIXDB_Production
 =====

TOTAL DATABASE SIZE PER TABLESPACE

Date	Tablespace Name	Filesize (Gb)	Usedsize (Gb)	Percentage free
27-12-2014	ABSDATA	40	30	25
	INDX	97	82	15
26-12-2014	ABSDATA	40	30	25
	INDX	97	82	15
25-12-2014	ABSDATA	40	30	25
	INDX	97	82	15
24-12-2014	ABSDATA	40	30	25
	INDX	97	82	15
23-12-2014	ABSDATA	40	30	25
	INDX	97	82	15
22-12-2014	ABSDATA	40	30	25
	INDX	97	82	15
21-12-2014	ABSDATA	40	30	25
	INDX	97	82	15

=====
 STANDBY DATABASE HEALTH NIX_Production
 =====

Recovery lag for last 7 days



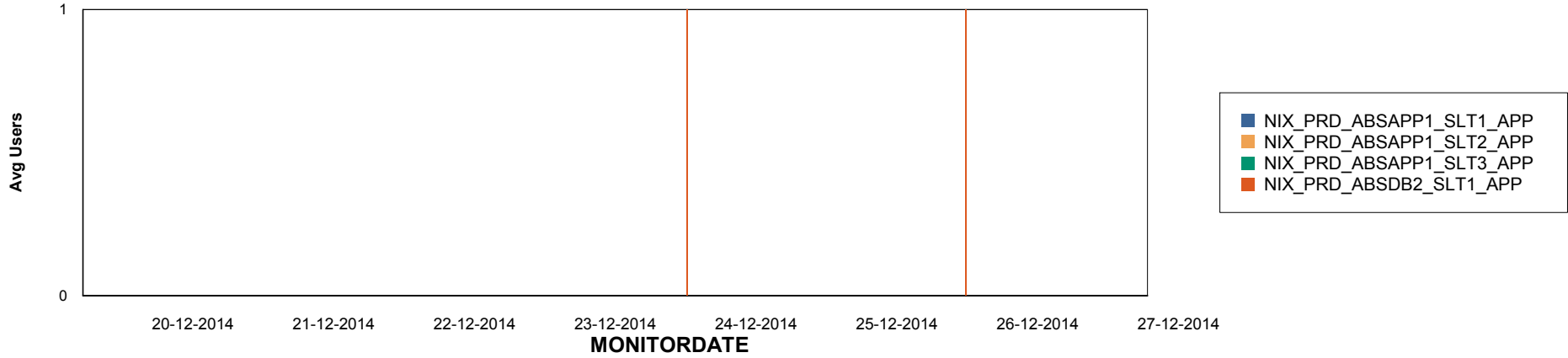
Weekly SLA Customer Report

Customer NIX_Production
Database ID 51

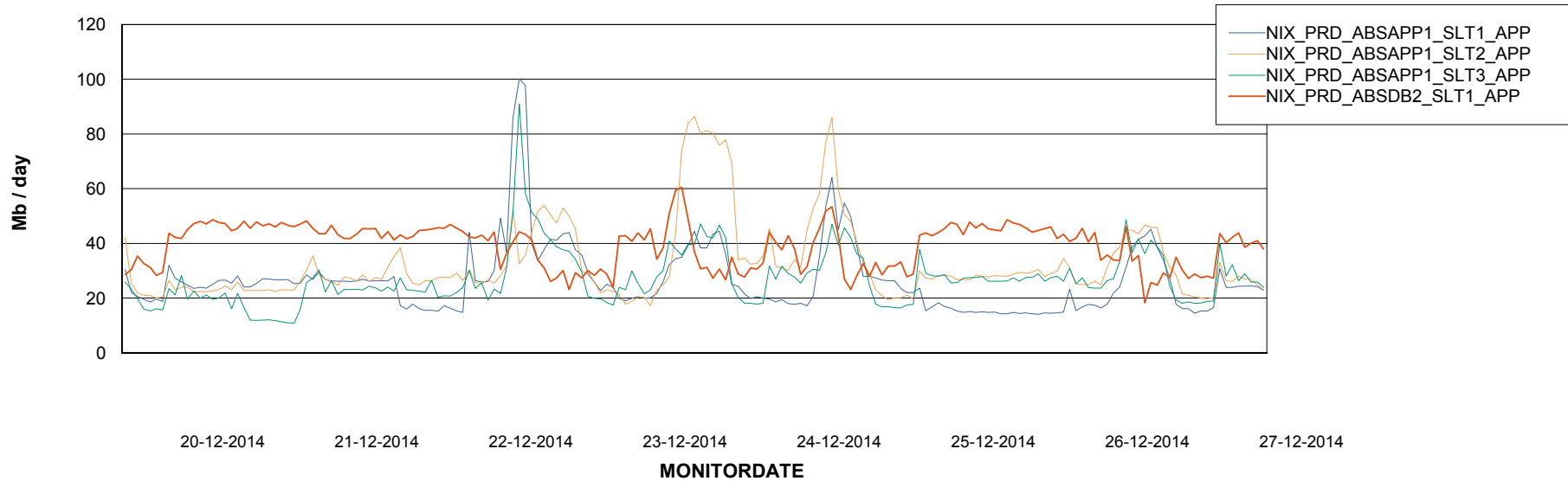


ABSolute Application Server Services

Disaster per ABS Server



Avg memory used per ABS Server Service



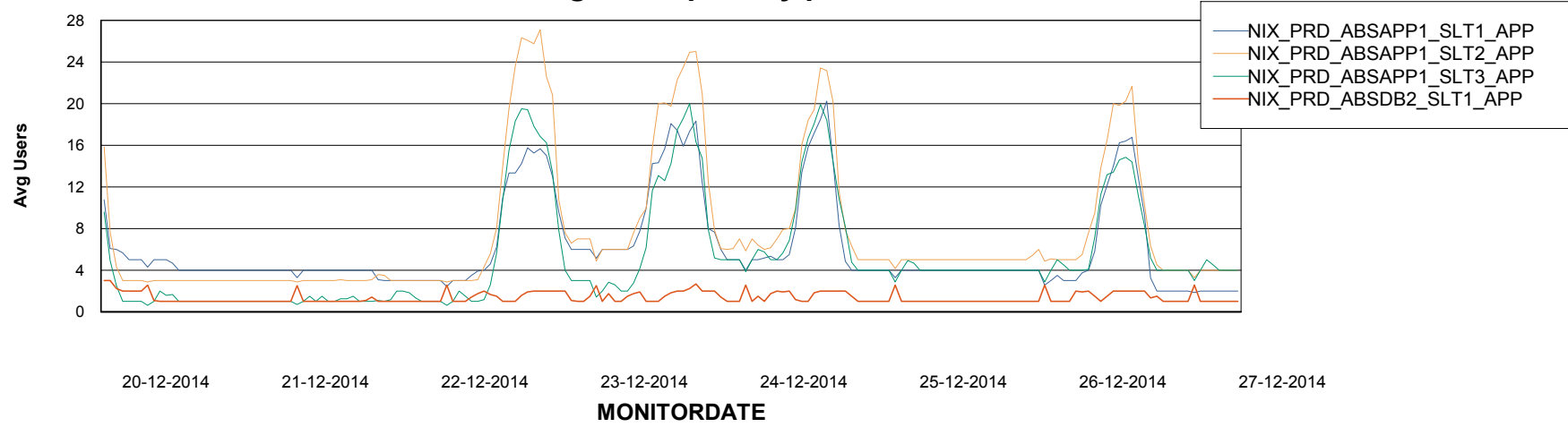
Weekly SLA Customer Report

Customer NIX_Production
Database ID 51



=====
ABSolute Application Server Services
=====

Avg users per day per ABS server



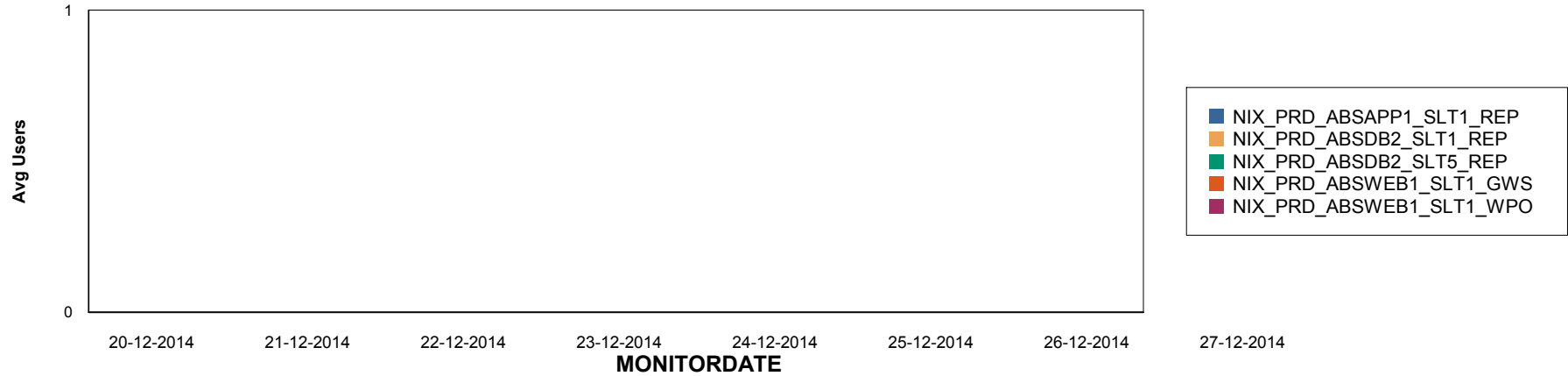
Weekly SLA Customer Report

Customer NIX_Production
Database ID 51

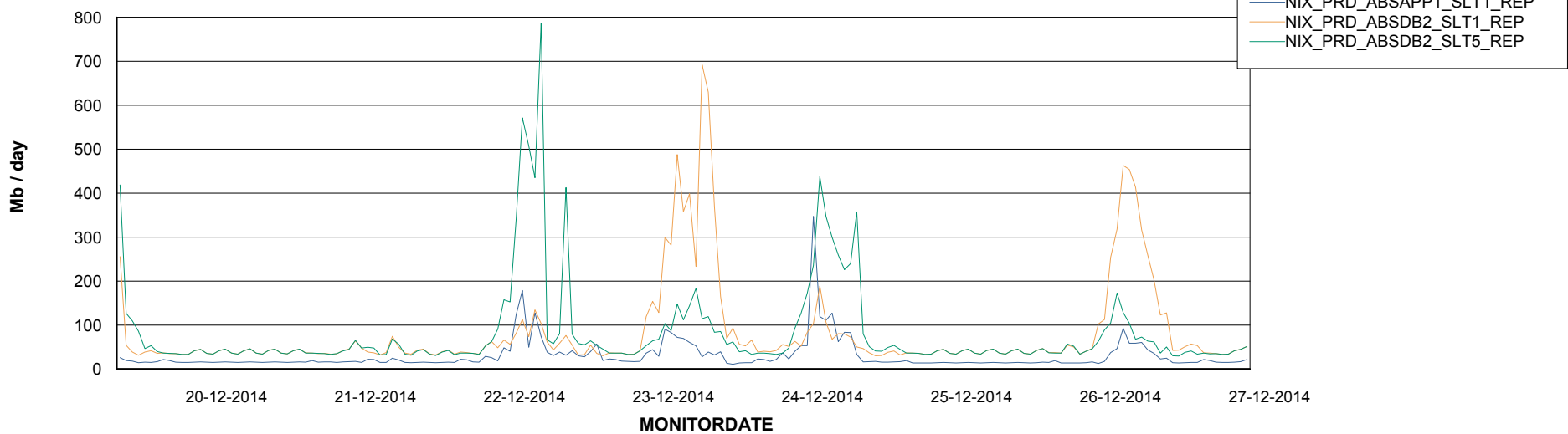


=====
ABSolute Application ReportServer Services
=====

Disaster per ReportServer



Avg memory used per ReportServer Service



Weekly SLA Customer Report

Customer NIX_Production
Database ID 51



Disaster per ABS component

