

Weekly SLA Customer Report

Customer JWR Production
 Database ID 43



=====
 HARDDISK USAGE JWR_PRD_JWR-ABS-01
 =====

	Used disk space on / (GB)	Total disk space on / (GB)	Free disk space on / (GB)
27-12-2014	27	49	20
26-12-2014	27	49	20
25-12-2014	27	49	20
24-12-2014	27	49	20
23-12-2014	27	49	20
22-12-2014	27	49	20
21-12-2014	27	49	20

=====
 HARDDISK USAGE JWR_PRD_JWR-ABS-02
 =====

	Used disk space on / (GB)	Total disk space on / (GB)	Free disk space on / (GB)
27-12-2014	27	49	20
26-12-2014	27	49	20
25-12-2014	27	49	20
24-12-2014	27	49	20
23-12-2014	27	49	20
22-12-2014	27	49	20
21-12-2014	27	49	20

Weekly SLA Customer Report

Customer JWR Production
 Database ID 43



=====
 HARDDISK USAGE JWR_PRD_JWR-ODB-01
 =====

	Used disk space on / (GB)	Total disk space on / (GB)	Free disk space on / (GB)
27-12-2014	76	90	10
26-12-2014	76	90	10
25-12-2014	76	90	9
24-12-2014	75	90	11
23-12-2014	76	90	9
22-12-2014	75	90	10
21-12-2014	74	90	11

=====
 HARDDISK USAGE JWR_PRD_JWR-ODB-02
 =====

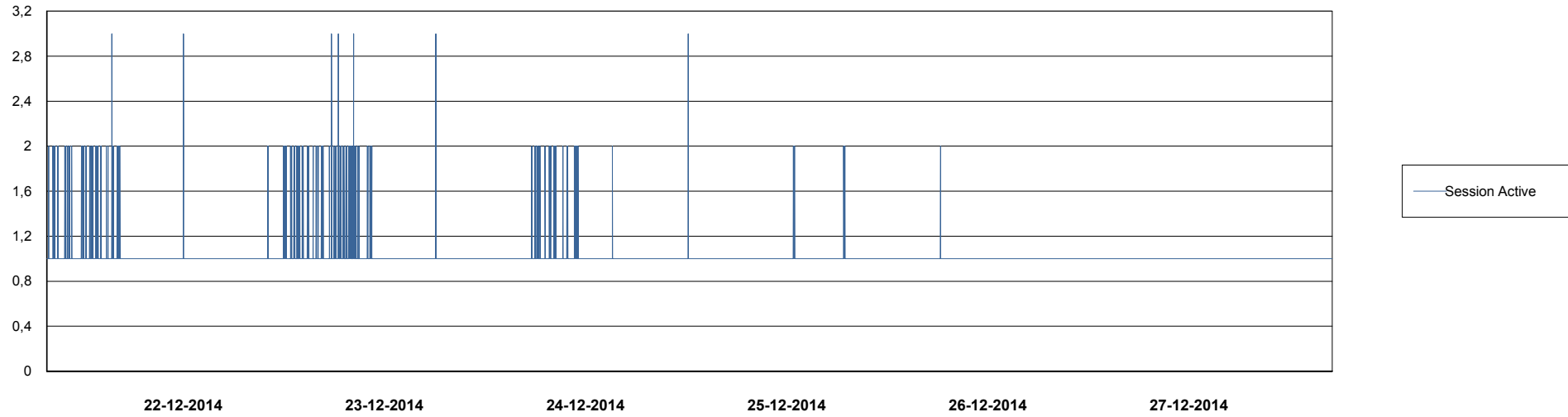
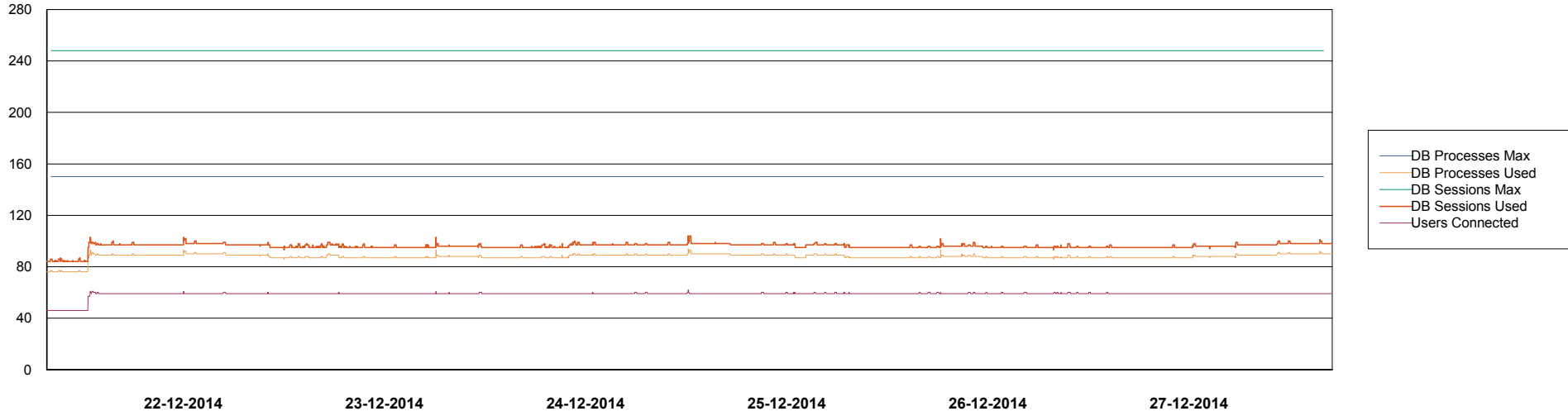
	Used disk space on / (GB)	Total disk space on / (GB)	Free disk space on / (GB)
27-12-2014	91	138	40
26-12-2014	91	138	40
25-12-2014	92	138	39
24-12-2014	92	138	39
23-12-2014	92	138	39
22-12-2014	92	138	39
21-12-2014	91	138	39

Weekly SLA Customer Report

Customer JWR Production
Database ID 43



DATABASE PERFORMANCE JWRDB_Production



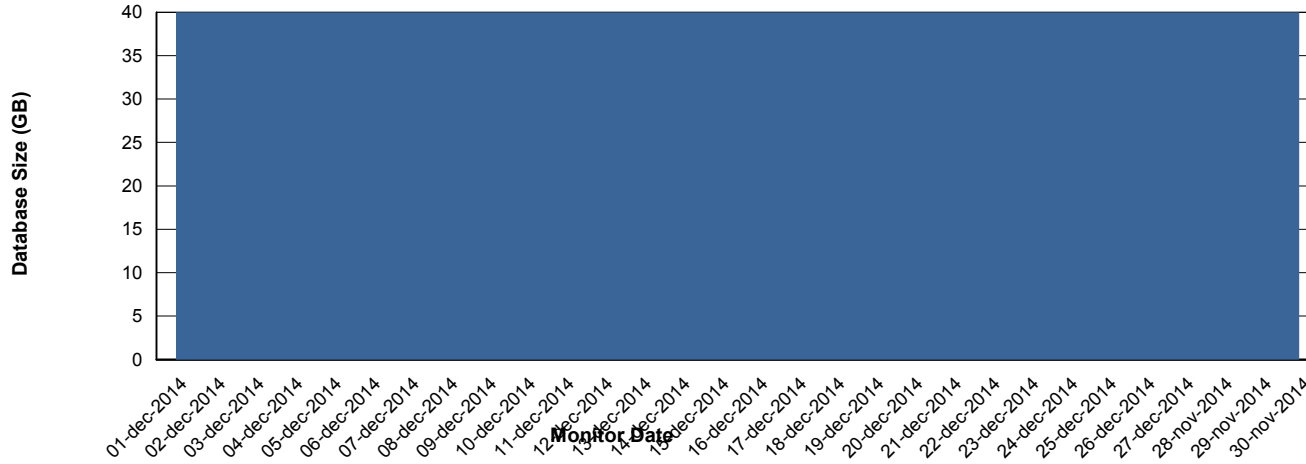
Weekly SLA Customer Report

Customer JWR Production
 Database ID 43



=====
 DATABASE SIZE JWRDB_Production
 =====

Database growth over last month



=====
 DATABASE TABLESPACES JWRDB_Production
 =====

TOTAL DATABASE SIZE PER TABLESPACE

Date	Tablespace Name	Filesize (Gb)	Usedsize (Gb)	Percentage free
27-12-2014	ABSDATA	15	12	20
	INDX	32	28	13
26-12-2014	ABSDATA	15	12	20
	INDX	32	28	13
25-12-2014	ABSDATA	15	12	20
	INDX	32	28	13
24-12-2014	ABSDATA	15	12	20
	INDX	32	28	13
23-12-2014	ABSDATA	15	12	20
	INDX	32	28	13
22-12-2014	ABSDATA	15	12	20
	INDX	32	28	13
21-12-2014	ABSDATA	15	12	20
	INDX	32	28	13

Weekly SLA Customer Report

Customer JWR Production
Database ID 43



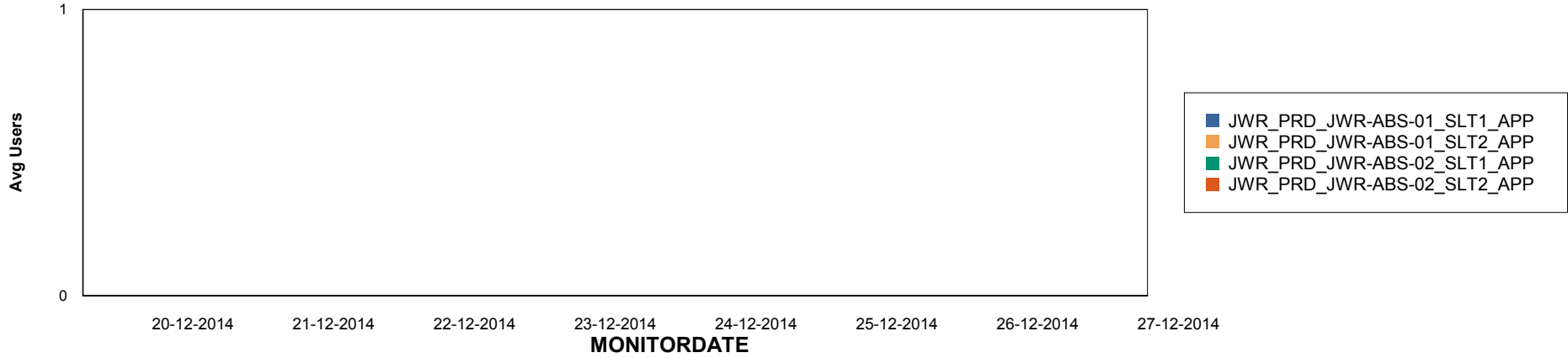
Weekly SLA Customer Report

Customer JWR Production
Database ID 43

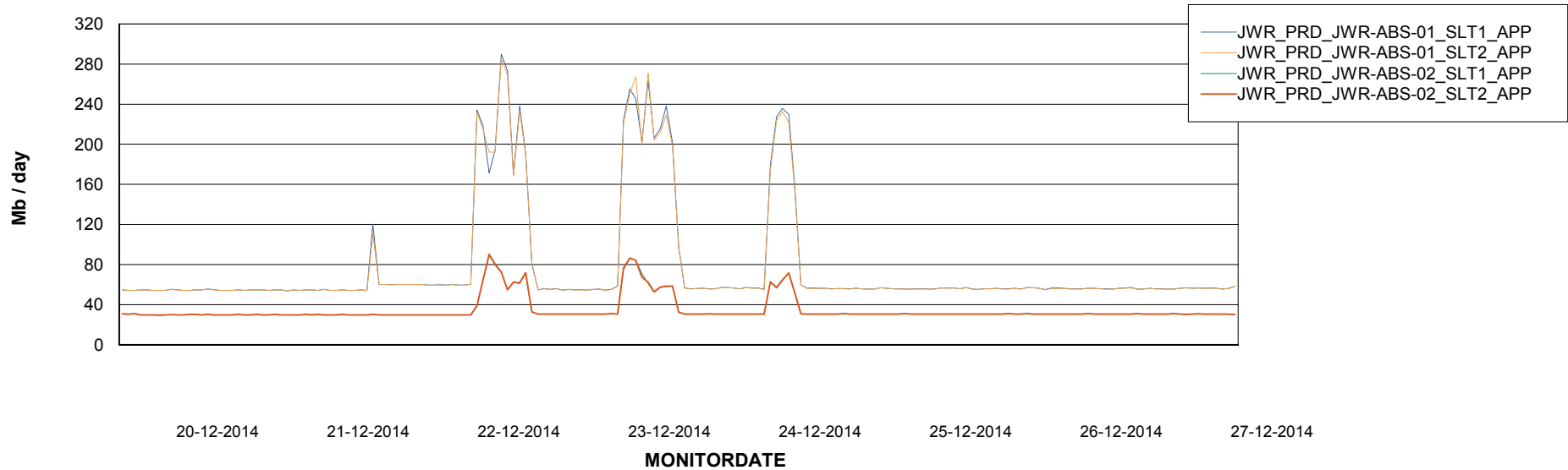


ABSolute Application Server Services

Disaster per ABS Server



Avg memory used per ABS Server Service



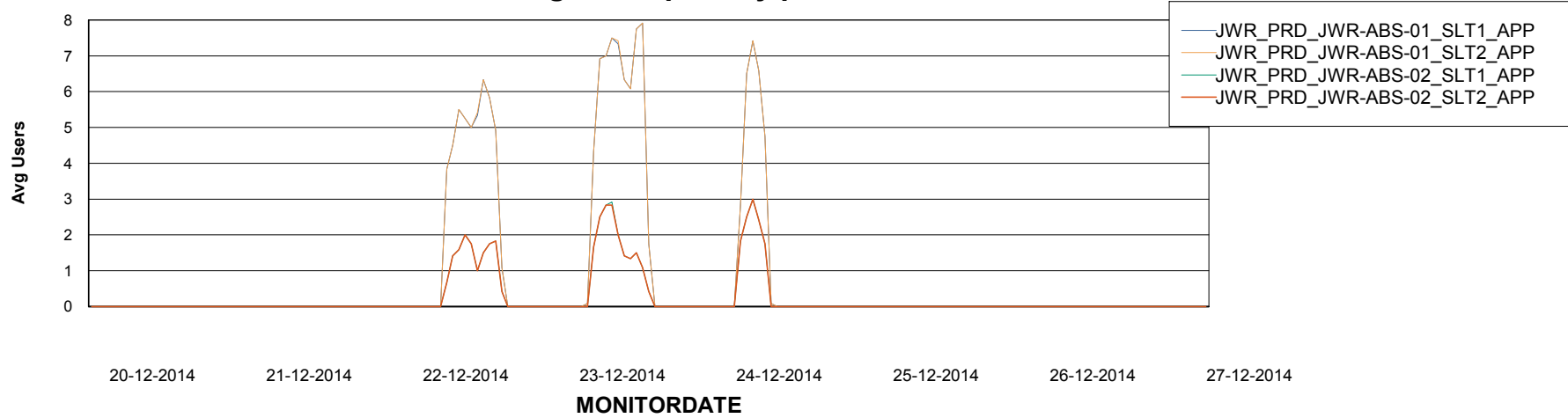
Weekly SLA Customer Report

Customer JWR Production
Database ID 43



=====
ABSolute Application Server Services
=====

Avg users per day per ABS server



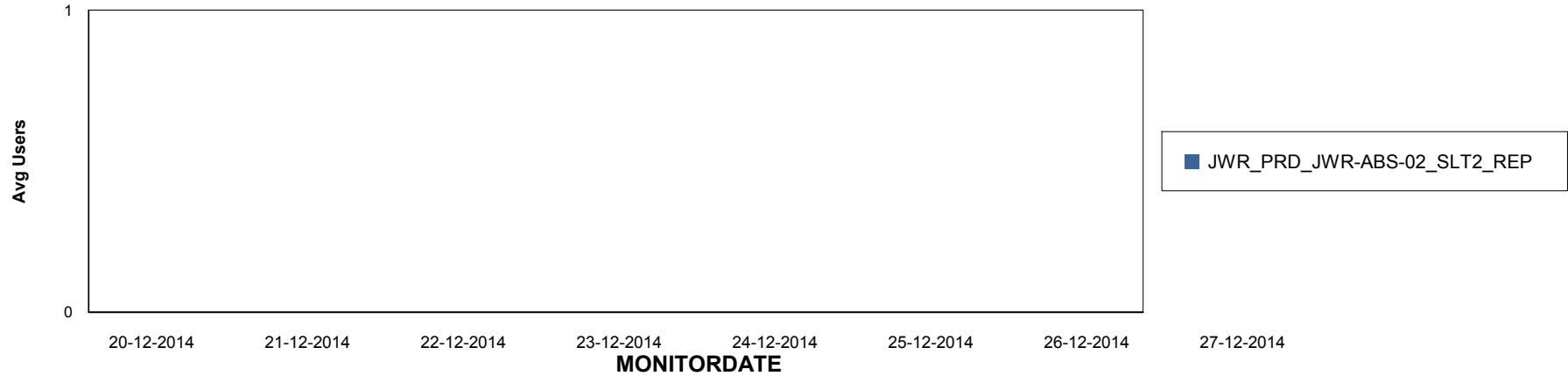
Weekly SLA Customer Report

Customer JWR Production
Database ID 43

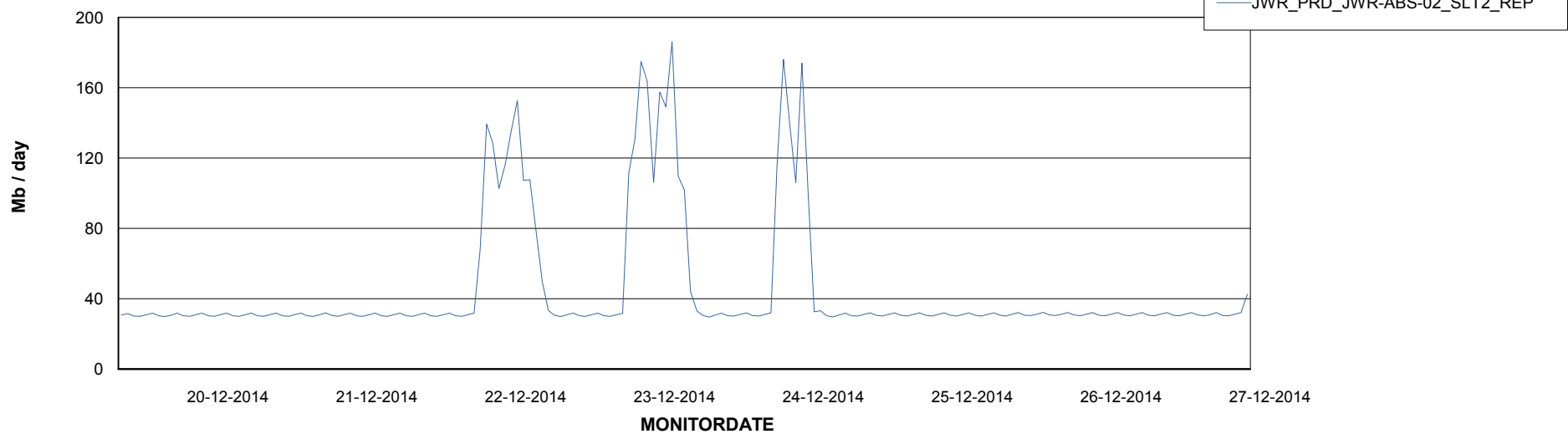


=====
ABSolute Application ReportServer Services
=====

Disaster per ReportServer



Avg memory used per ReportServer Service



Weekly SLA Customer Report

Customer JWR Production
Database ID 43



Disaster per ABS component

