

Weekly SLA Customer Report

Customer BOH_Production
 Database ID 55



=====
 HARDDISK USAGE BOH_PRD_ORACLE1
 =====

	Total disk space on C (GB)	Free disk space on C (GB)	Total disk space on D (GB)	Free disk space on D (GB)	Total disk space on E (GB)	Free disk space on E (GB)
27-12-2014	80	13	100	67	150	69
26-12-2014	80	13	100	67	150	70
25-12-2014	80	13	100	67	150	70
24-12-2014	80	13	100	67	150	71
23-12-2014	80	13	100	67	150	71
22-12-2014	80	13	100	67	150	27
21-12-2014	80	13	100	67	150	23

=====
 HARDDISK USAGE BOH_PRD_ORACLE2
 =====

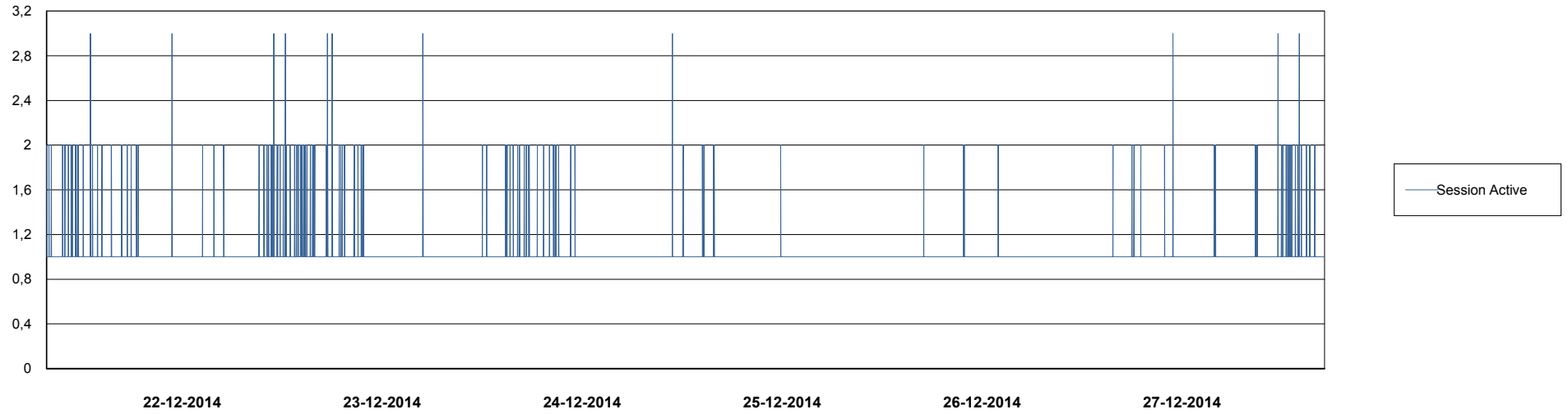
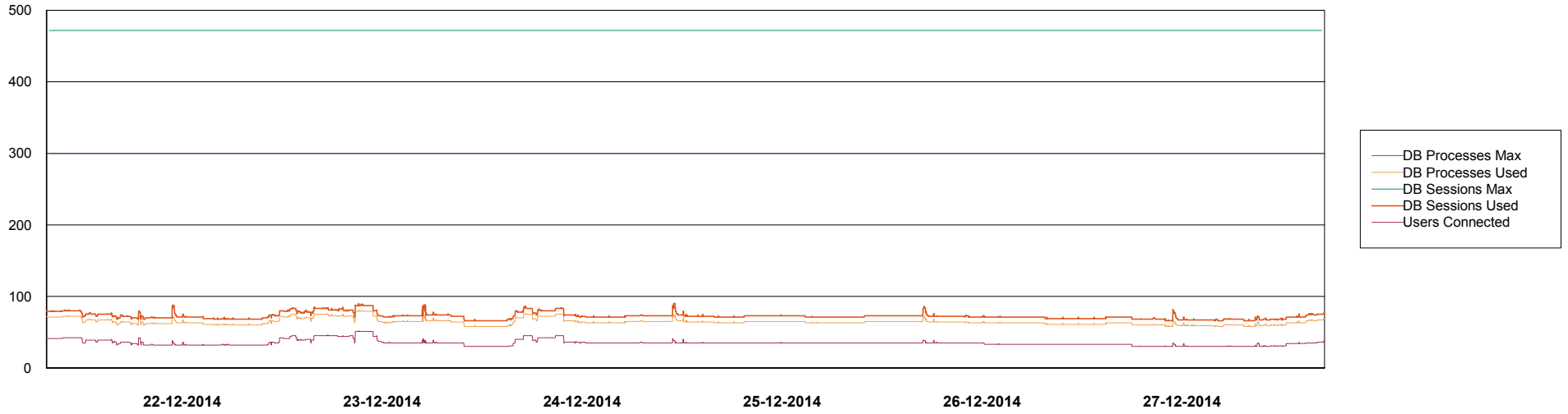
	Total disk space on C (GB)	Free disk space on C (GB)	Total disk space on D (GB)	Free disk space on D (GB)	Total disk space on E (GB)	Free disk space on E (GB)
27-12-2014	67	19	227	195	329	276
26-12-2014	67	19	227	195	329	277
25-12-2014	67	19	227	195	329	277
24-12-2014	67	19	227	195	329	277
23-12-2014	67	19	227	195	329	278
22-12-2014	67	19	227	195	329	213
21-12-2014	67	19	227	195	329	207

Weekly SLA Customer Report

Customer BOH_Production
Database ID 55



DATABASE PERFORMANCE BOHDB_Production

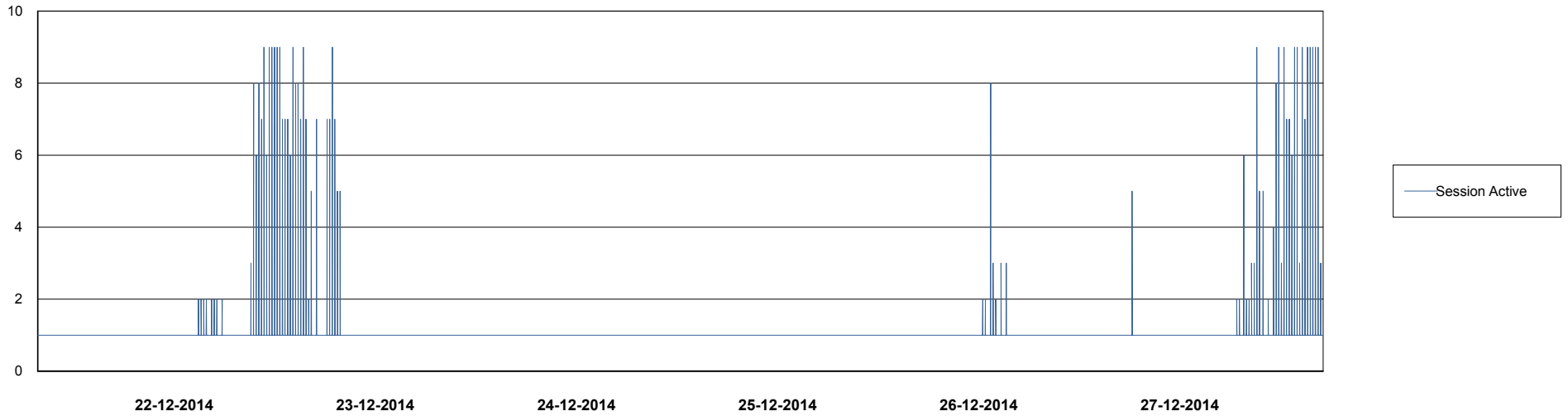
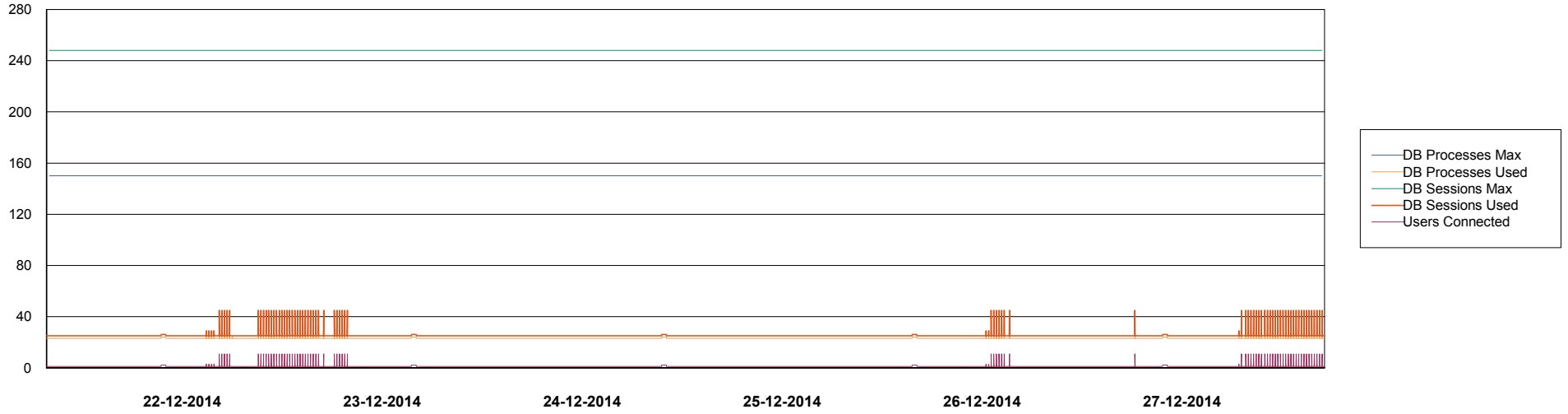


Weekly SLA Customer Report

Customer BOH_Production
Database ID 55



DATABASE PERFORMANCE BOHDB_Standby



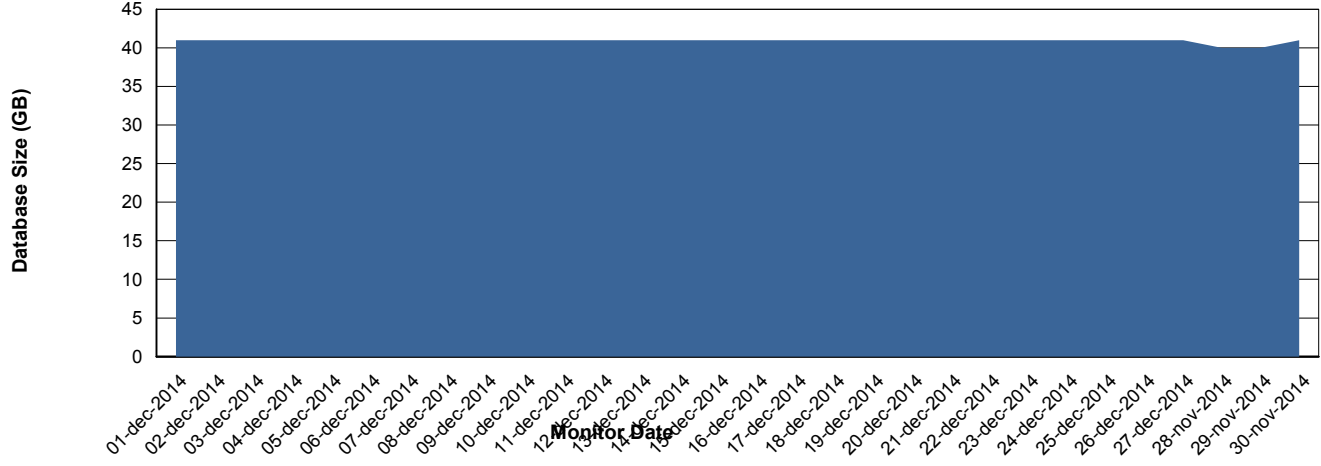
Weekly SLA Customer Report

Customer BOH_Production
 Database ID 55



=====
 DATABASE SIZE BOHDB_Production
 =====

Database growth over last month



=====
 DATABASE TABLESPACES BOHDB_Production
 =====

TOTAL DATABASE SIZE PER TABLESPACE

Date	Tablespace Name	Filesize (Gb)	Usedsize (Gb)	Percentage free
27-12-2014	ABSDATA	16	12	25
	INDX	32	27	16
26-12-2014	ABSDATA	16	12	25
	INDX	32	27	16
25-12-2014	ABSDATA	16	12	25
	INDX	32	27	16
24-12-2014	ABSDATA	16	12	25
	INDX	32	27	16
23-12-2014	ABSDATA	16	12	25
	INDX	32	27	16
22-12-2014	ABSDATA	16	12	25
	INDX	32	27	16
21-12-2014	ABSDATA	16	12	25
	INDX	32	27	16

