

## Weekly SLA Customer Report

Customer      JWR Production  
 Database ID    43



=====  
 HARDDISK USAGE    JWR\_PRD\_JWR-ABS-01  
 =====

	Used disk space on / (GB)	Total disk space on / (GB)	Free disk space on / (GB)
20-12-2014	27	49	20
19-12-2014	27	49	20
18-12-2014	27	49	20
17-12-2014	27	49	20
16-12-2014	27	49	20
15-12-2014	27	49	20
14-12-2014	27	49	20

=====  
 HARDDISK USAGE    JWR\_PRD\_JWR-ABS-02  
 =====

	Used disk space on / (GB)	Total disk space on / (GB)	Free disk space on / (GB)
20-12-2014	27	49	20
19-12-2014	27	49	20
18-12-2014	27	49	20
17-12-2014	27	49	20
16-12-2014	27	49	20
15-12-2014	27	49	20
14-12-2014	27	49	20

# Weekly SLA Customer Report

Customer JWR Production  
Database ID 43



=====  
HARDDISK USAGE JWR\_PRD\_JWR-ODB-01  
=====

	Used disk space on / (GB)	Total disk space on / (GB)	Free disk space on / (GB)
20-12-2014	74	90	11
19-12-2014	74	90	11
18-12-2014	75	90	11
17-12-2014	75	90	11
16-12-2014	75	90	11
15-12-2014	75	90	11
14-12-2014	74	90	11

=====  
HARDDISK USAGE JWR\_PRD\_JWR-ODB-02  
=====

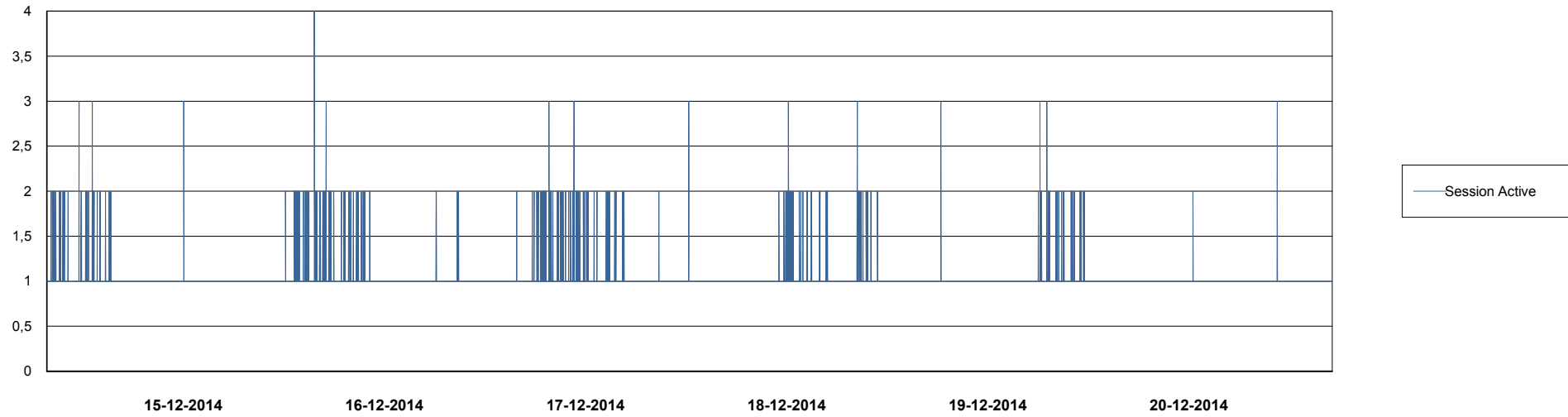
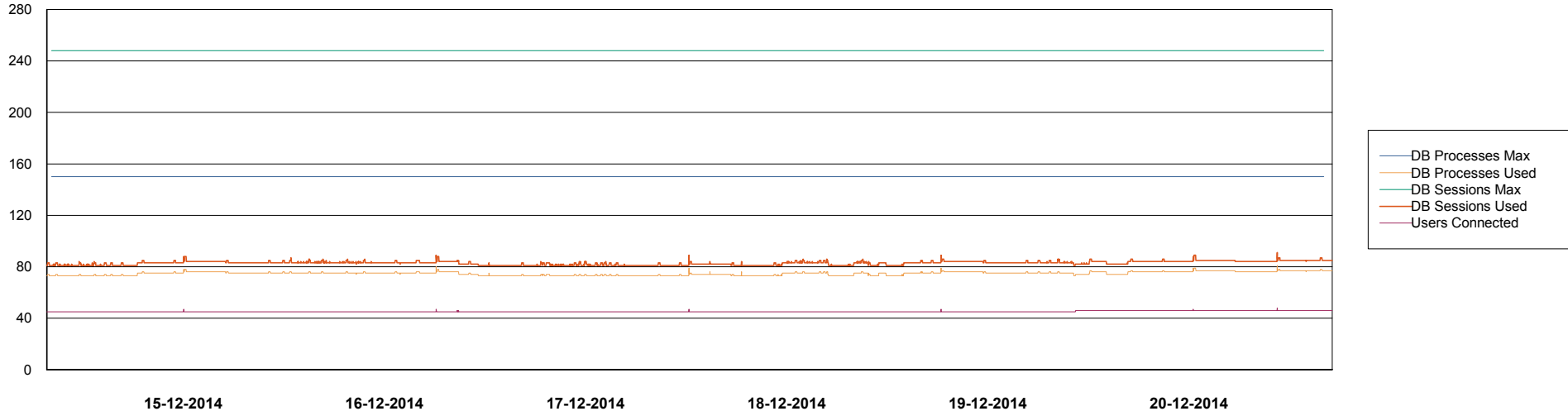
	Used disk space on / (GB)	Total disk space on / (GB)	Free disk space on / (GB)
20-12-2014	92	138	39
19-12-2014	92	138	39
18-12-2014	92	138	39
17-12-2014	92	138	39
16-12-2014	92	138	39
15-12-2014	92	138	39
14-12-2014	91	138	39

# Weekly SLA Customer Report

Customer JWR Production  
Database ID 43



DATABASE PERFORMANCE JWRDB\_Production



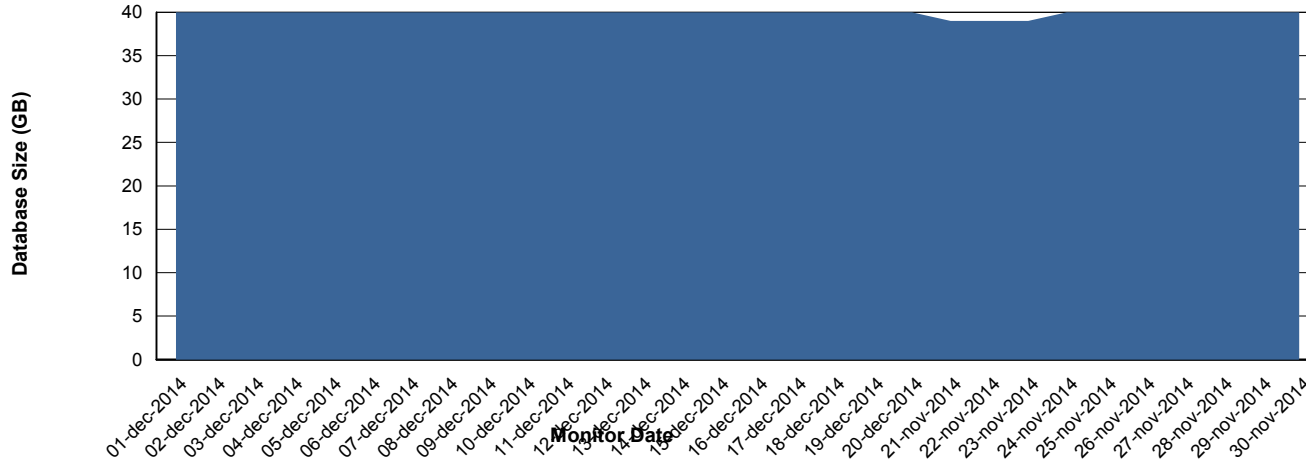
# Weekly SLA Customer Report

Customer JWR Production  
 Database ID 43



=====  
 DATABASE SIZE JWRDB\_Production  
 =====

## Database growth over last month



=====  
 DATABASE TABLESPACES JWRDB\_Production  
 =====

### TOTAL DATABASE SIZE PER TABLESPACE

Date	Tablespace Name	Filesize (Gb)	Usedsize (Gb)	Percentage free
20-12-2014	ABSDATA	15	12	20
	INDX	32	28	13
19-12-2014	ABSDATA	15	12	20
	INDX	32	28	13
18-12-2014	ABSDATA	15	12	20
	INDX	32	28	13
17-12-2014	ABSDATA	15	12	20
	INDX	32	28	13
16-12-2014	ABSDATA	15	12	20
	INDX	32	28	13
15-12-2014	ABSDATA	15	12	20
	INDX	32	28	13
14-12-2014	ABSDATA	15	12	20
	INDX	32	28	13

# Weekly SLA Customer Report

---

Customer     JWR Production  
Database ID   43



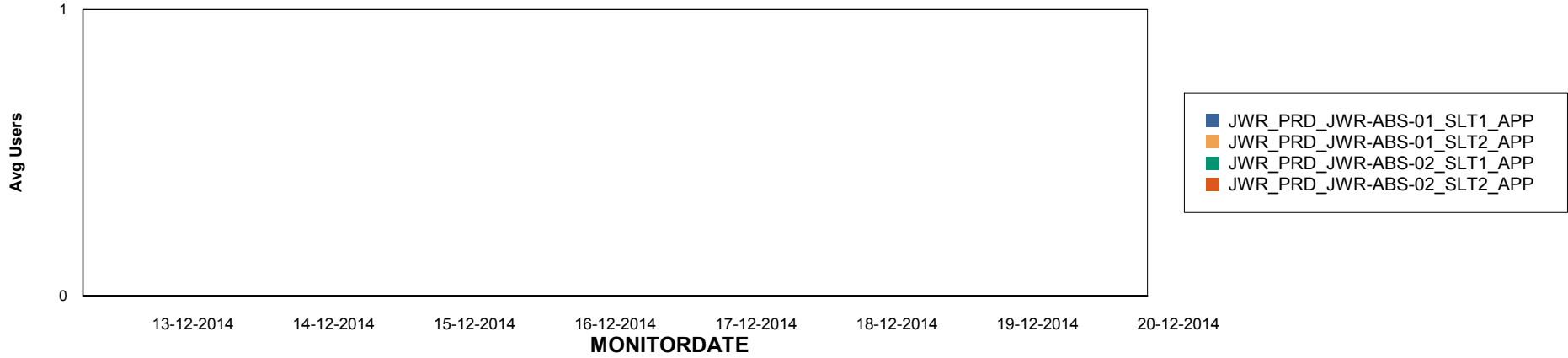
# Weekly SLA Customer Report

Customer JWR Production  
Database ID 43

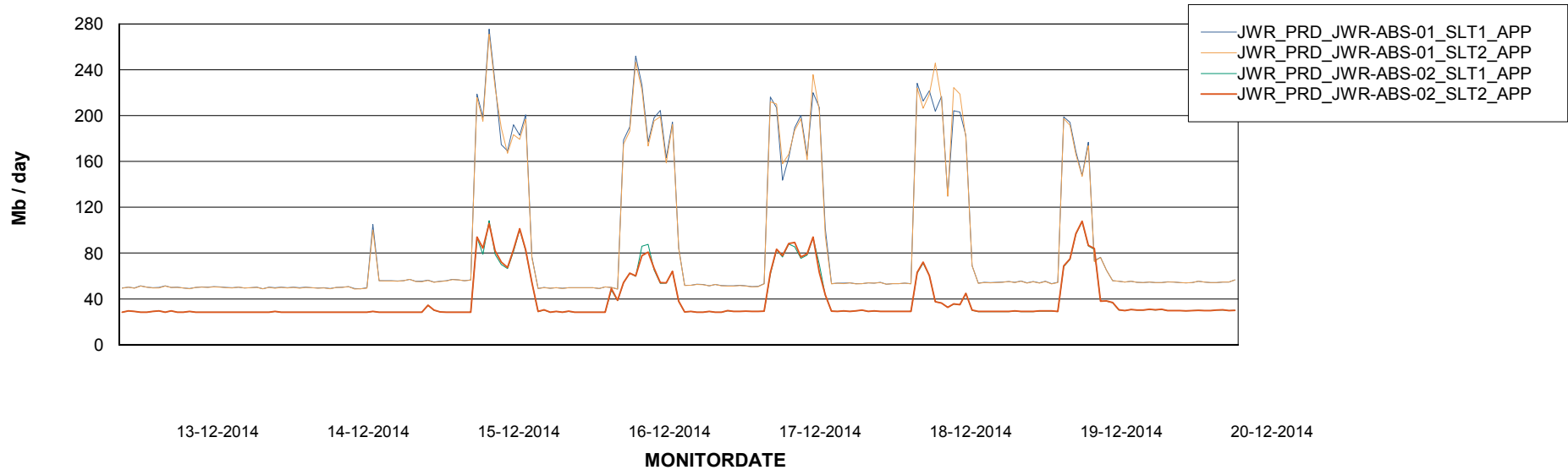


## ABSolute Application Server Services

### Disaster per ABS Server



### Avg memory used per ABS Server Service



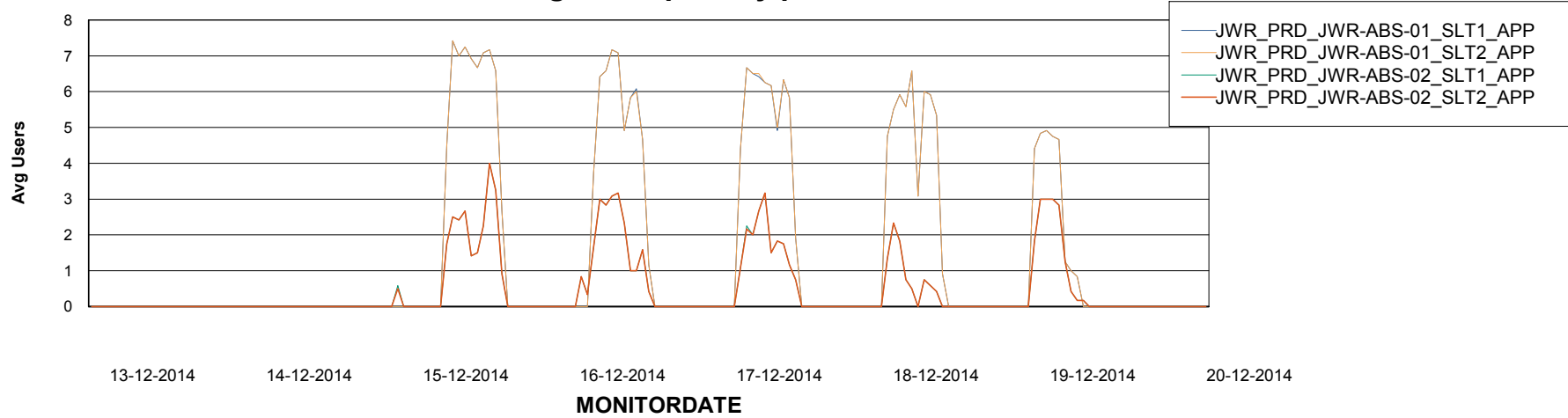
# Weekly SLA Customer Report

Customer JWR Production  
Database ID 43



=====  
ABSolute Application Server Services  
=====

### Avg users per day per ABS server



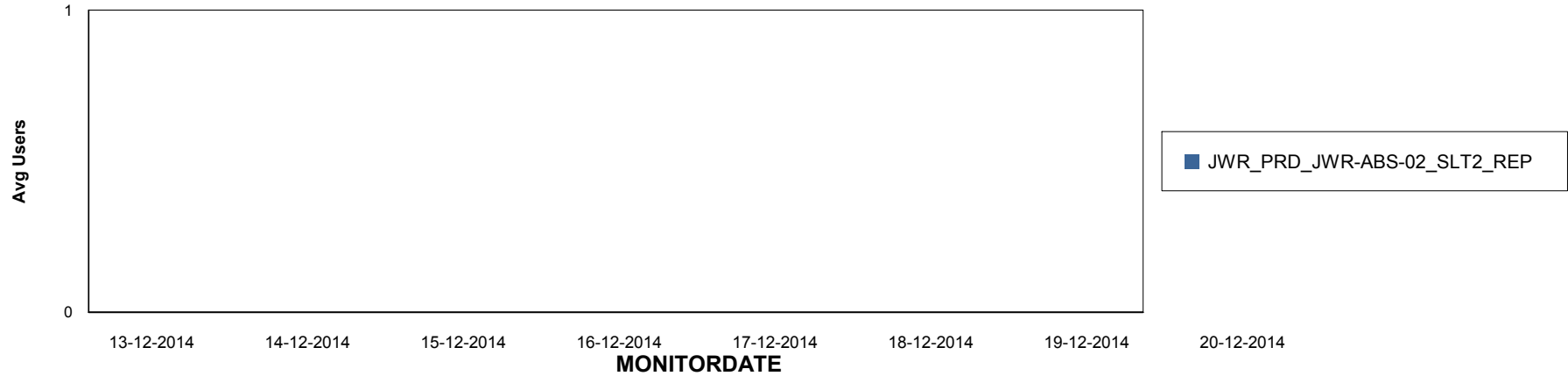
# Weekly SLA Customer Report

Customer JWR Production  
Database ID 43

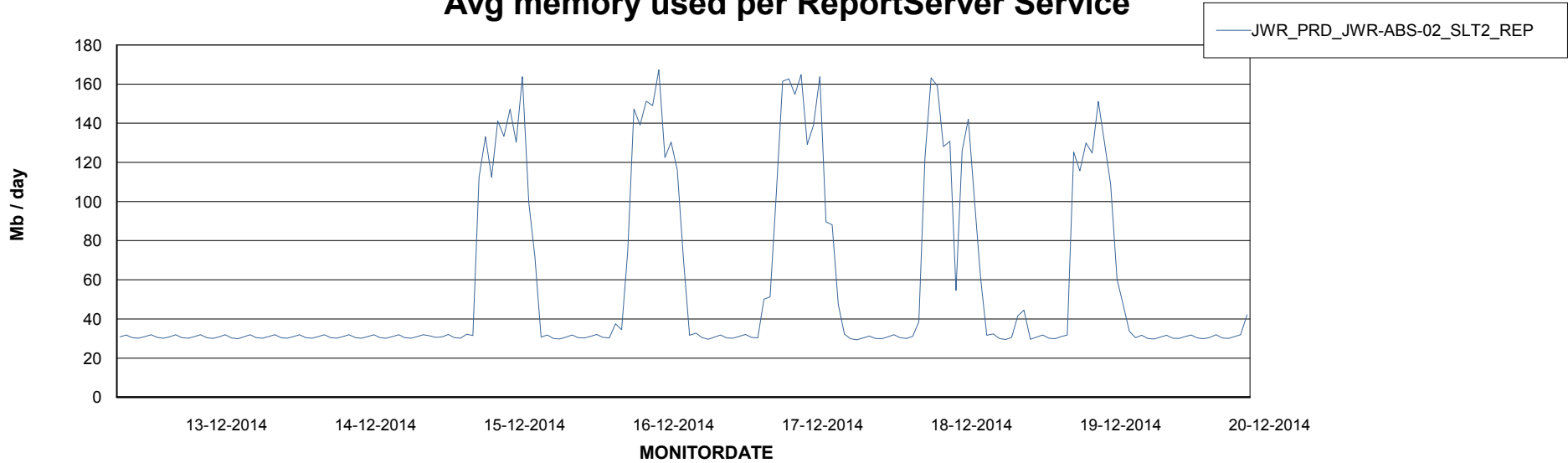


=====  
ABSolute Application ReportServer Services  
=====

## Disaster per ReportServer



## Avg memory used per ReportServer Service



# Weekly SLA Customer Report

Customer JWR Production  
Database ID 43



## Disaster per ABS component

