

Weekly SLA Customer Report

Customer RFL_Production
 Database ID 36



=====
 HARDDISK USAGE RFL_PRD_ORACLE1
 =====

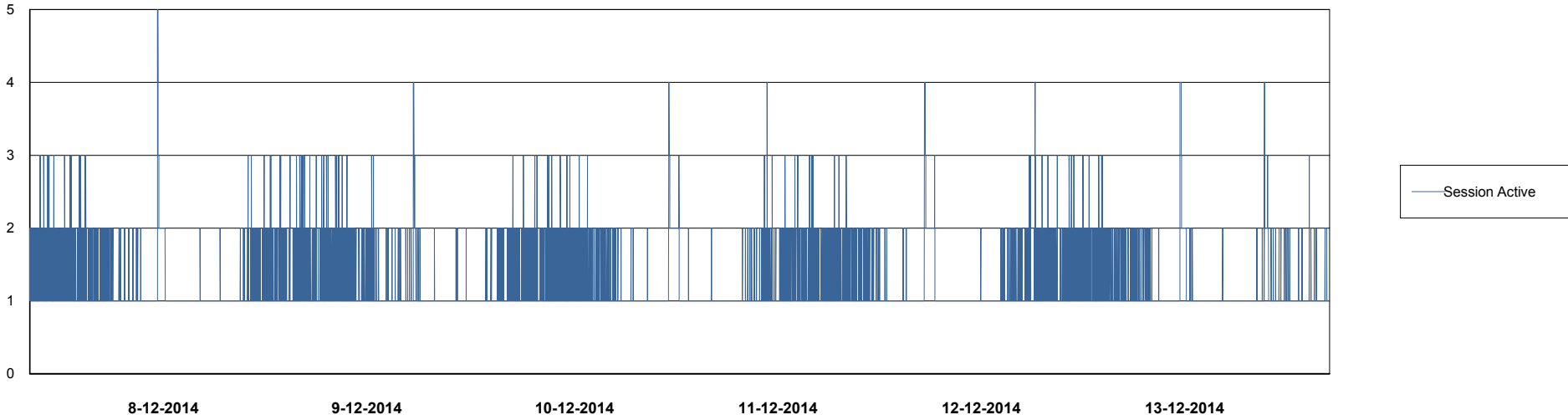
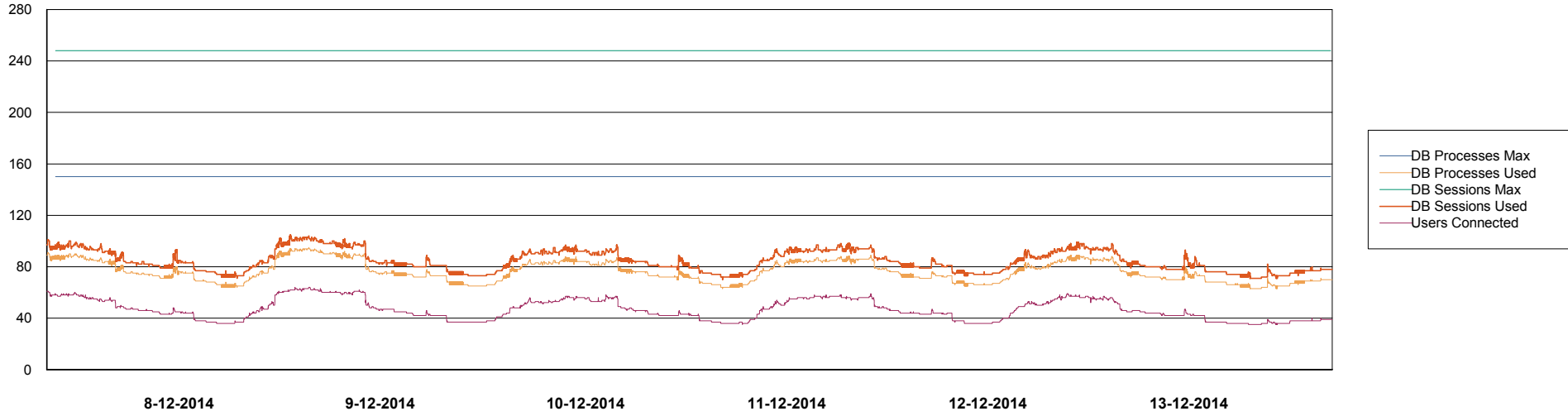
	Total disk space on C (GB)	Free disk space on C (GB)	Total disk space on D (GB)	Free disk space on D (GB)	Total disk space on E (GB)	Free disk space on E (GB)
13-12-2014	279	125	137	99	137	32
12-12-2014	279	125	137	99	137	32
11-12-2014	279	125	137	99	137	33
10-12-2014	279	125	137	99	137	34
9-12-2014	279	125	137	99	137	35
8-12-2014	279	125	137	99	137	36
7-12-2014	279	126	137	99	137	36

Weekly SLA Customer Report

Customer RFL_Production
Database ID 36



DATABASE PERFORMANCE RFLDB_Production

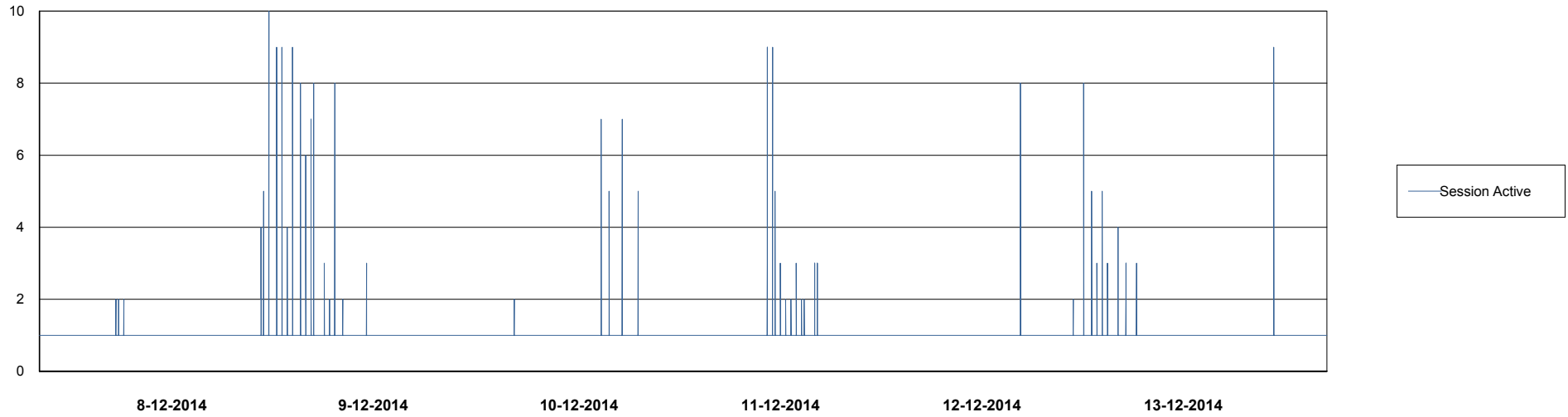
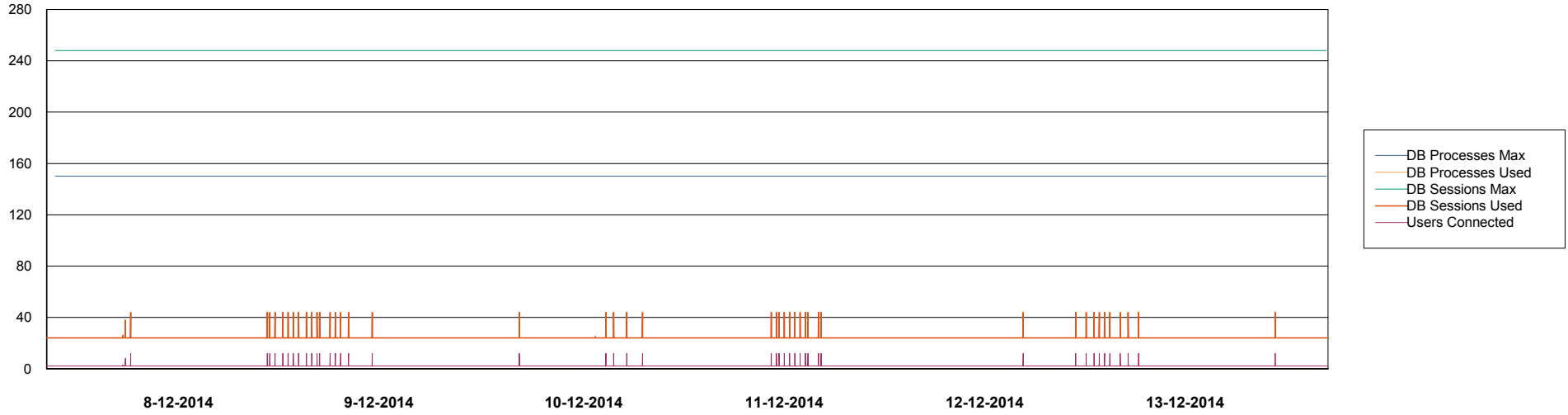


Weekly SLA Customer Report

Customer RFL_Production
Database ID 36



DATABASE PERFORMANCE RFLDB_Standby



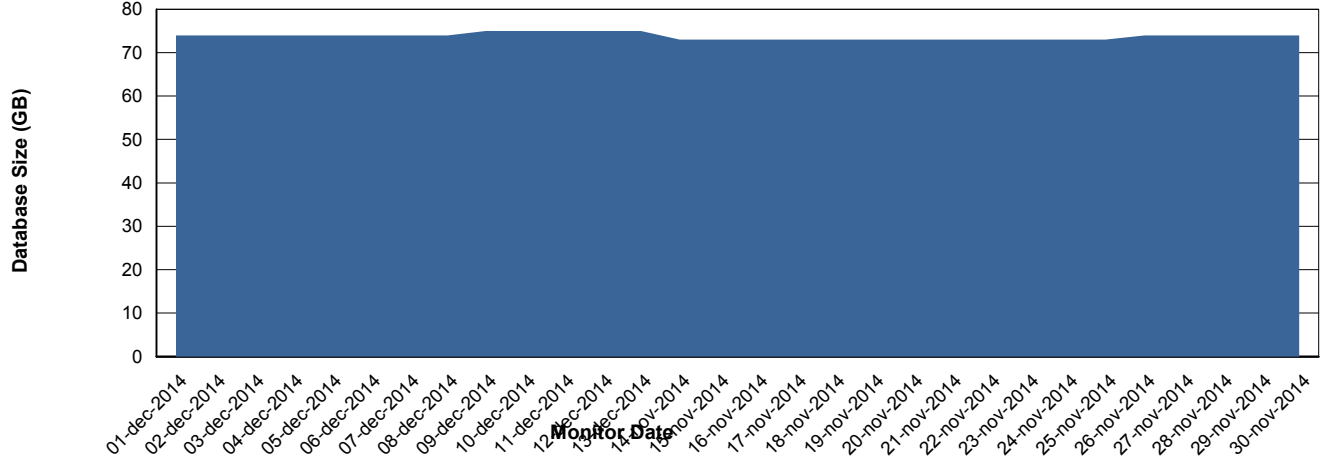
Weekly SLA Customer Report

Customer RFL_Production
 Database ID 36



=====
 DATABASE SIZE RFLDB_Production
 =====

Database growth over last month



=====
 DATABASE TABLESPACES RFLDB_Production
 =====

TOTAL DATABASE SIZE PER TABLESPACE

Date	Tablespace Name	Filesize (Gb)	Usedsize (Gb)	Percentage free
13-12-2014	ABSDATA	22	18	18
	INDX	64	56	13
12-12-2014	ABSDATA	22	18	18
	INDX	64	56	13
11-12-2014	ABSDATA	22	18	18
	INDX	64	56	13
10-12-2014	ABSDATA	22	18	18
	INDX	64	56	13
9-12-2014	ABSDATA	22	18	18
	INDX	64	55	14
8-12-2014	ABSDATA	22	18	18
	INDX	64	55	14
7-12-2014	ABSDATA	22	18	18
	INDX	64	55	14

Weekly SLA Customer Report

Customer RFL_Production
Database ID 36



=====
STANDBY DATABASE HEALTH RFL_Production
=====

Recovery lag for last 7 days

