

Weekly SLA Customer Report

Customer LLG_Production
 Database ID 53



=====
 HARDDISK USAGE LLG_PRD_BI01
 =====

| | Total disk space on C (GB) | Free disk space on C (GB) |
|------------|----------------------------|---------------------------|
| 13-12-2014 | 559 | 392 |
| 12-12-2014 | 559 | 392 |
| 11-12-2014 | 559 | 392 |
| 10-12-2014 | 559 | 392 |
| 9-12-2014 | 559 | 392 |
| 8-12-2014 | 559 | 393 |
| 7-12-2014 | 559 | 393 |

=====
 HARDDISK USAGE LLG_PRD_OR01
 =====

| | Total disk space on C (GB) | Free disk space on C (GB) | Total disk space on D (GB) | Free disk space on D (GB) |
|------------|----------------------------|---------------------------|----------------------------|---------------------------|
| 13-12-2014 | 279 | 178 | 600 | 90 |
| 12-12-2014 | 279 | 178 | 600 | 97 |
| 11-12-2014 | 279 | 178 | 600 | 105 |
| 10-12-2014 | 279 | 178 | 600 | 112 |
| 9-12-2014 | 279 | 178 | 600 | 120 |
| 8-12-2014 | 279 | 178 | 600 | 133 |
| 7-12-2014 | 279 | 178 | 600 | 155 |

Weekly SLA Customer Report

Customer LLG_Production
 Database ID 53



=====
 HARDDISK USAGE LLG_PRD_OR2
 =====

| | Total disk space on C (GB) | Free disk space on C (GB) | Total disk space on D (GB) | Free disk space on D (GB) |
|------------|-------------------------------|------------------------------|-------------------------------|------------------------------|
| 13-12-2014 | 293 | 248 | 545 | 267 |
| 12-12-2014 | 293 | 248 | 545 | 268 |
| 11-12-2014 | 293 | 248 | 545 | 270 |
| 10-12-2014 | 293 | 248 | 545 | 271 |
| 9-12-2014 | 293 | 248 | 545 | 273 |
| 8-12-2014 | 293 | 248 | 545 | 282 |
| 7-12-2014 | 293 | 248 | 545 | 295 |

=====
 HARDDISK USAGE LLG_PRD_vABS01
 =====

| | Total disk space on C (GB) | Free disk space on C (GB) | Total disk space on D (GB) | Free disk space on D (GB) |
|------------|-------------------------------|------------------------------|-------------------------------|------------------------------|
| 13-12-2014 | 150 | 60 | 150 | 145 |
| 12-12-2014 | 150 | 62 | 150 | 145 |
| 11-12-2014 | 150 | 71 | 150 | 145 |
| 10-12-2014 | 150 | 72 | 150 | 145 |
| 9-12-2014 | 150 | 61 | 150 | 145 |
| 8-12-2014 | 150 | 60 | 150 | 145 |
| 7-12-2014 | 150 | 59 | 150 | 145 |

Weekly SLA Customer Report

Customer LLG_Production
Database ID 53



HARDDISK USAGE LLG_PRD_vABS02

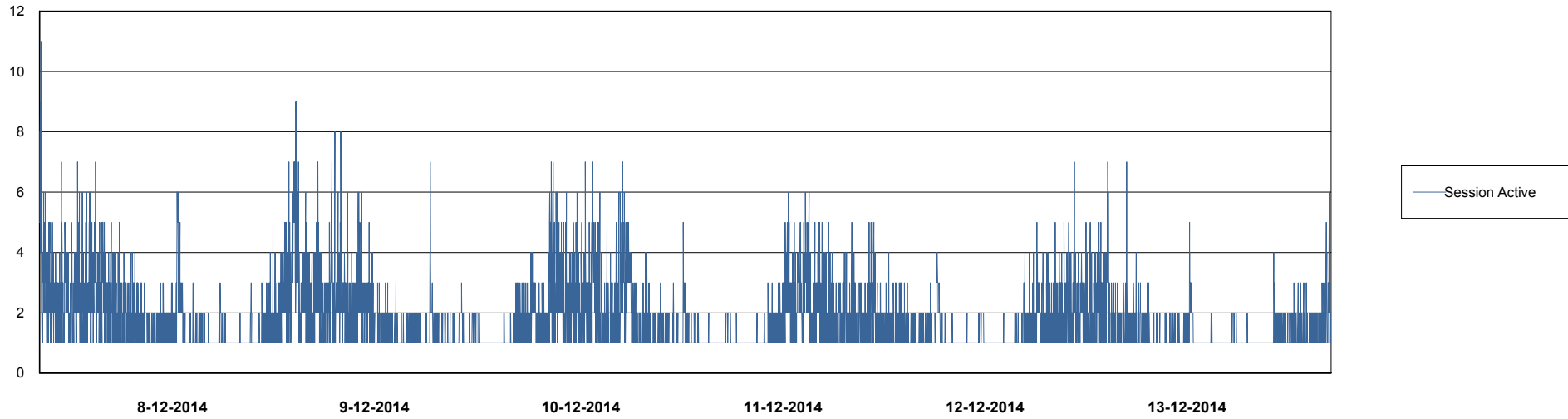
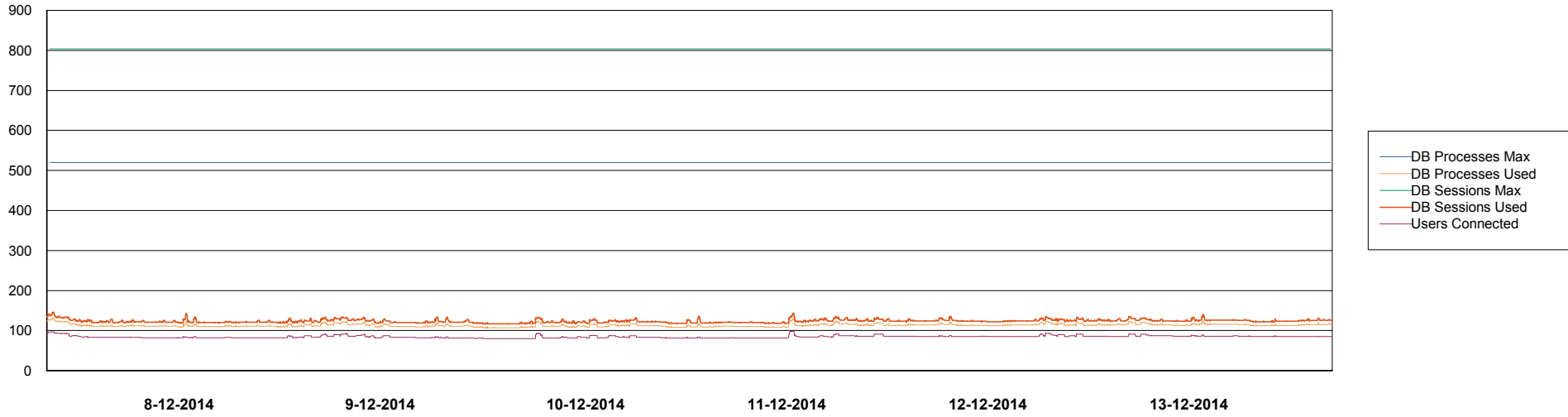
| | Total disk space on C (GB) | Free disk space on C (GB) | Total disk space on D (GB) | Free disk space on D (GB) |
|------------|----------------------------|---------------------------|----------------------------|---------------------------|
| 13-12-2014 | 150 | 90 | 150 | 35 |
| 12-12-2014 | 150 | 92 | 150 | 35 |
| 11-12-2014 | 150 | 45 | 150 | 35 |
| 10-12-2014 | 150 | 15 | 150 | 81 |
| 9-12-2014 | 150 | 36 | 150 | 126 |
| 8-12-2014 | 150 | 64 | 150 | 126 |
| 7-12-2014 | 150 | 88 | 150 | 126 |

Weekly SLA Customer Report

Customer LLG_Production
Database ID 53



DATABASE PERFORMANCE LLGDB_Production

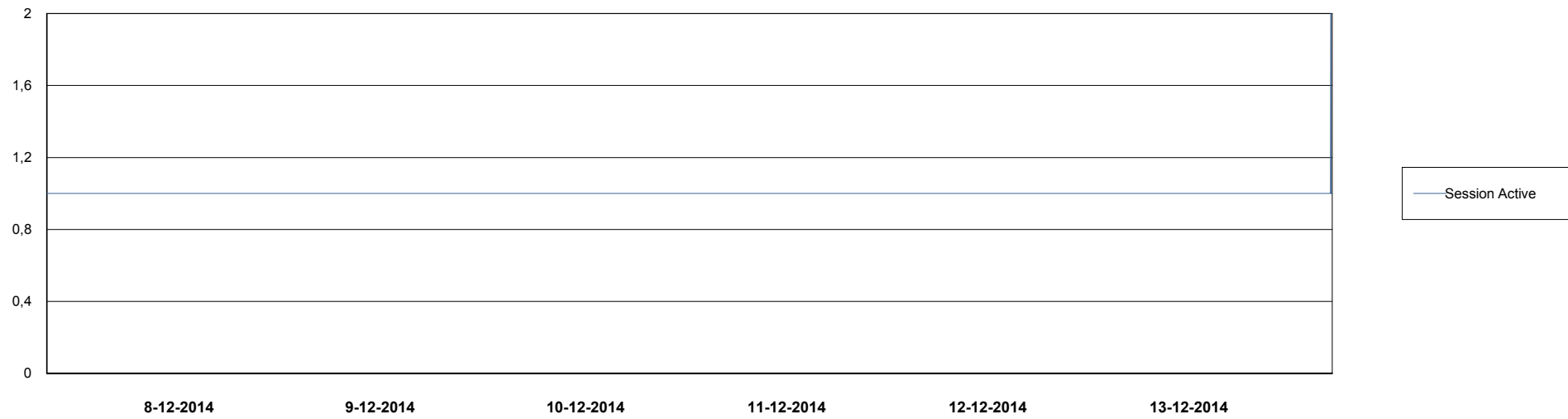
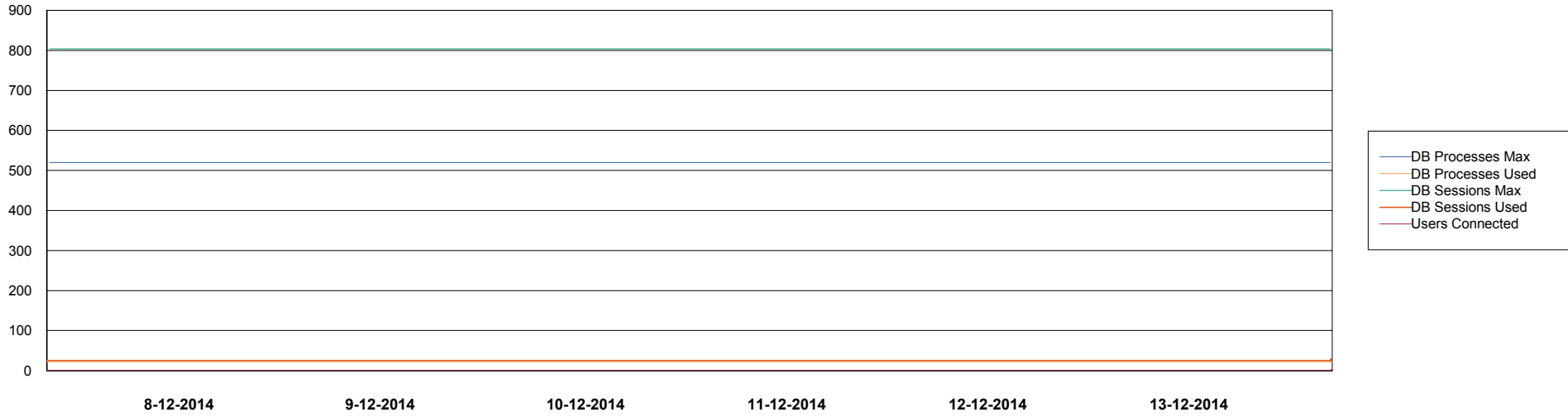


Weekly SLA Customer Report

Customer LLG_Production
Database ID 53



DATABASE PERFORMANCE LLGDB_Standby



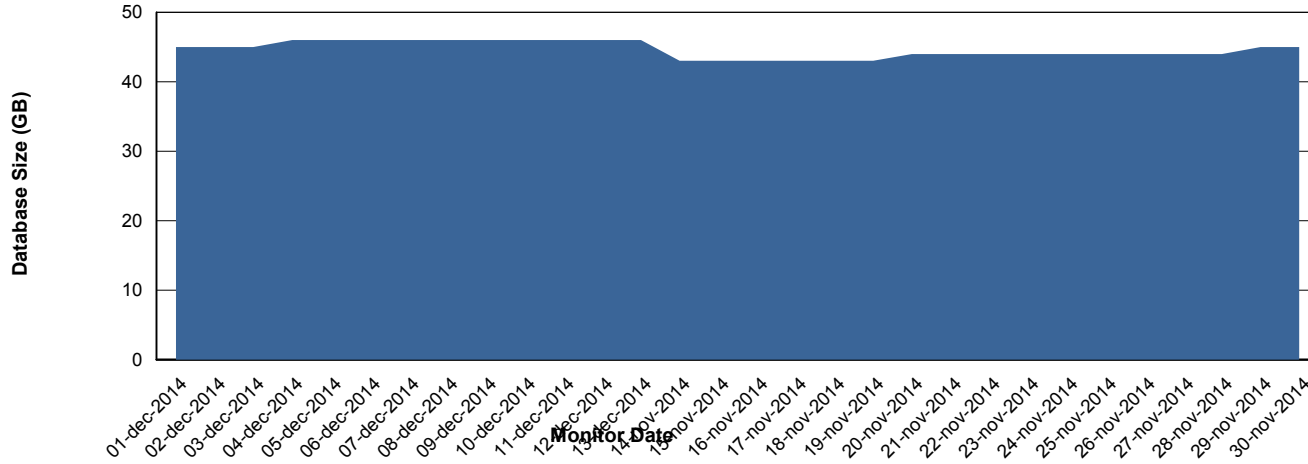
Weekly SLA Customer Report

Customer LLG_Production
 Database ID 53



=====
 DATABASE SIZE LLGDB_Production
 =====

Database growth over last month



=====
 DATABASE TABLESPACES LLGDB_Production
 =====

TOTAL DATABASE SIZE PER TABLESPACE

| Date | Tablespace Name | Filesize (Gb) | Usedsize (Gb) | Percentage free |
|------------|-----------------|---------------|---------------|-----------------|
| 13-12-2014 | ABSDATA | 20 | 16 | 20 |
| | INDX | 40 | 28 | 30 |
| 12-12-2014 | ABSDATA | 20 | 16 | 20 |
| | INDX | 40 | 28 | 30 |
| 11-12-2014 | ABSDATA | 20 | 16 | 20 |
| | INDX | 40 | 28 | 30 |
| 10-12-2014 | ABSDATA | 20 | 16 | 20 |
| | INDX | 40 | 28 | 30 |
| 9-12-2014 | ABSDATA | 20 | 16 | 20 |
| | INDX | 40 | 28 | 30 |
| 8-12-2014 | ABSDATA | 20 | 16 | 20 |
| | INDX | 40 | 28 | 30 |
| 7-12-2014 | ABSDATA | 20 | 16 | 20 |
| | INDX | 40 | 28 | 30 |

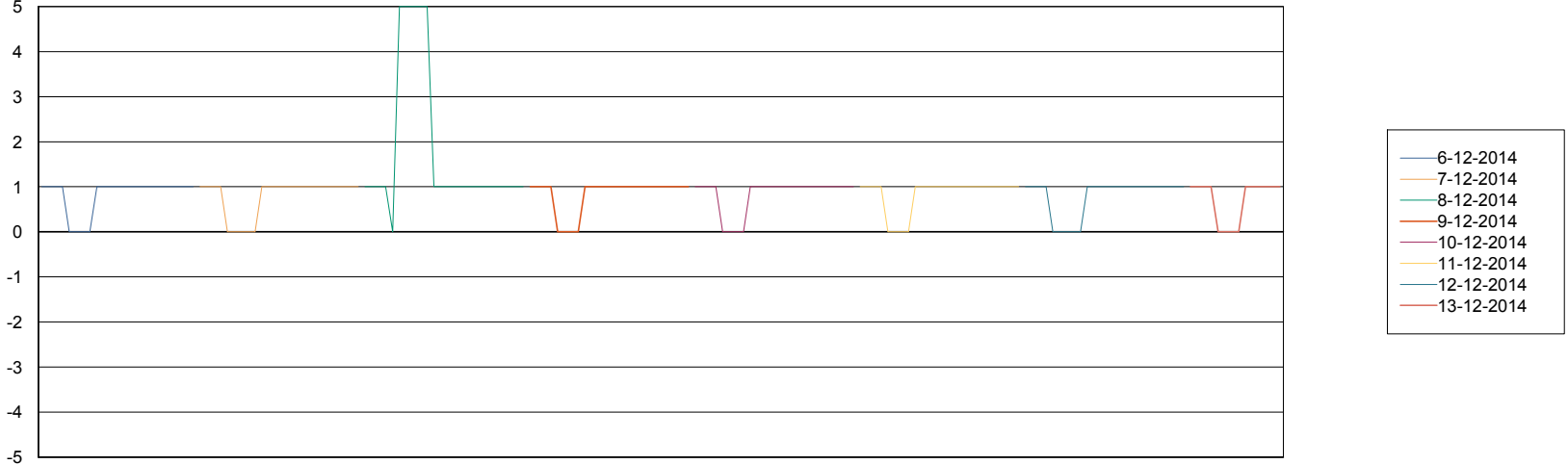
Weekly SLA Customer Report

Customer LLG_Production
Database ID 53



=====
STANDBY DATABASE HEALTH LLG_Production
=====

Recovery lag for last 7 days



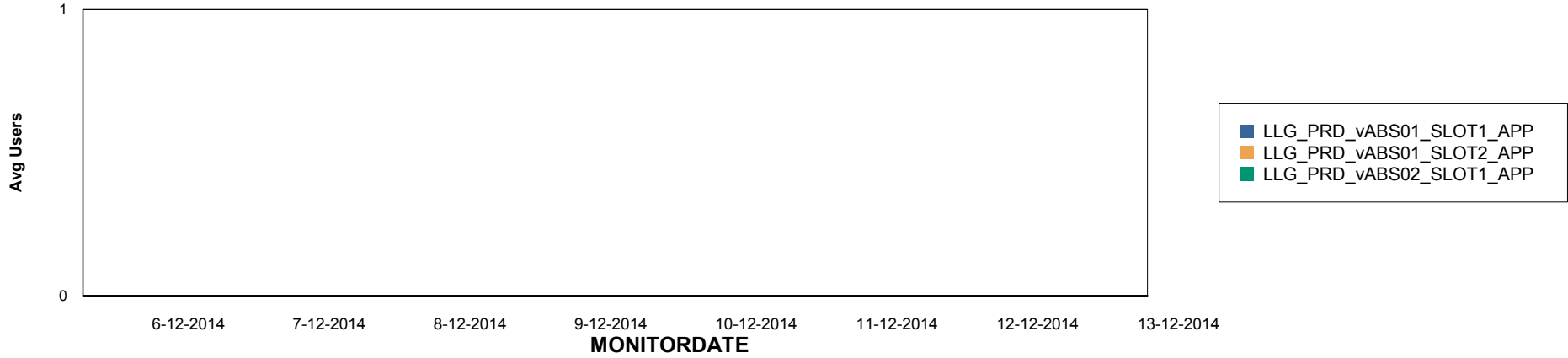
Weekly SLA Customer Report

Customer LLG_Production
Database ID 53

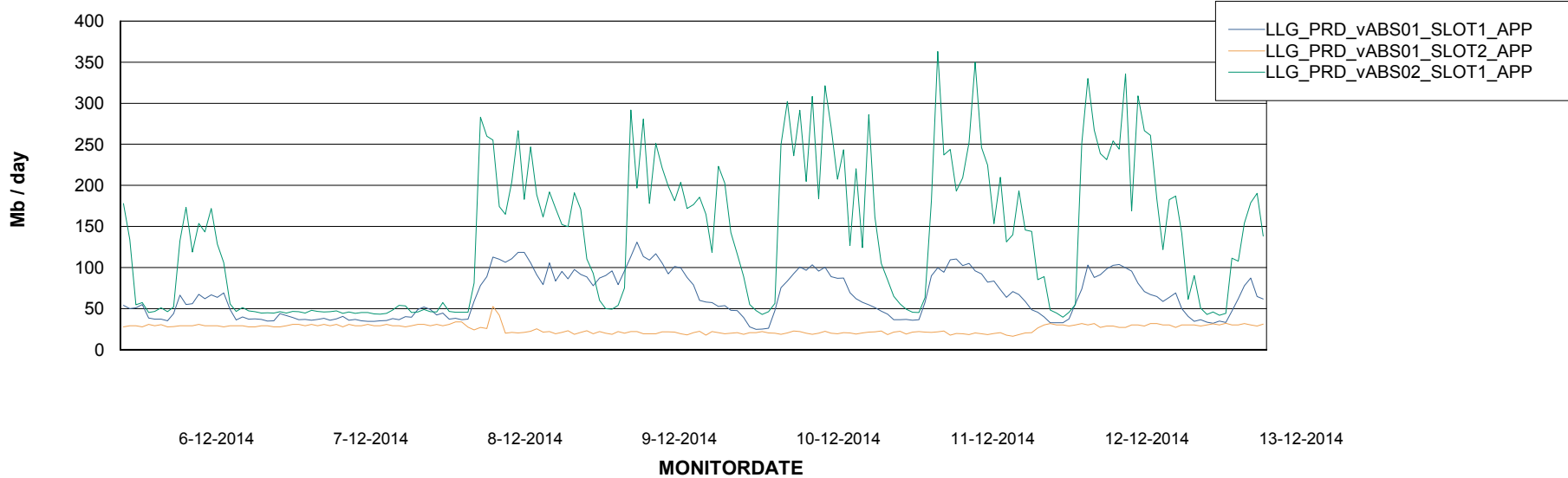


=====
ABSolute Application Server Services
=====

Disaster per ABS Server



Avg memory used per ABS Server Service



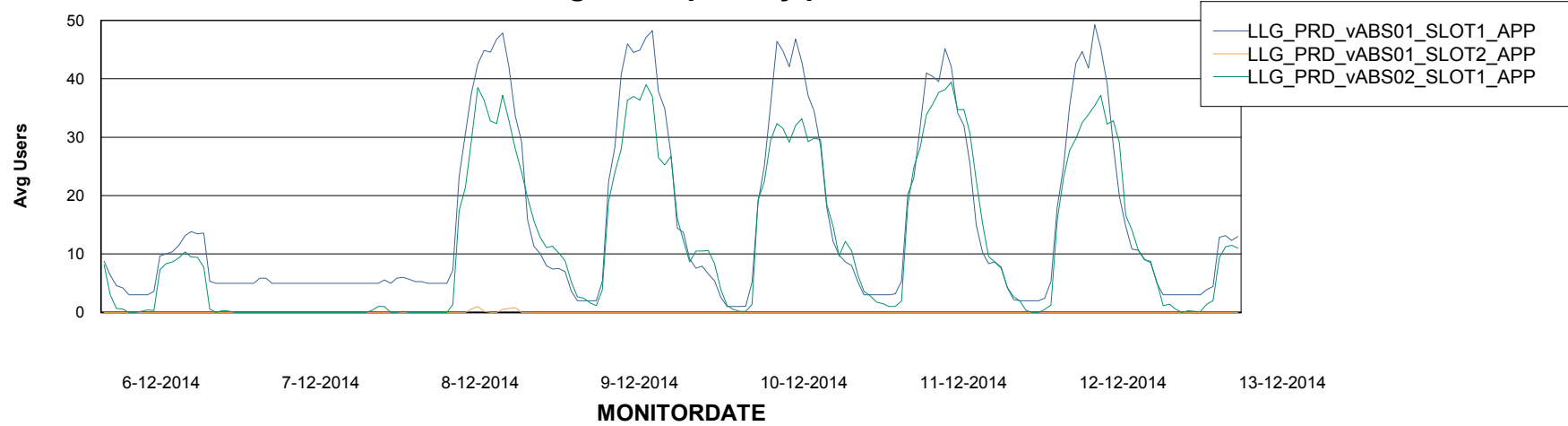
Weekly SLA Customer Report

Customer LLG_Production
Database ID 53



=====
ABSolute Application Server Services
=====

Avg users per day per ABS server



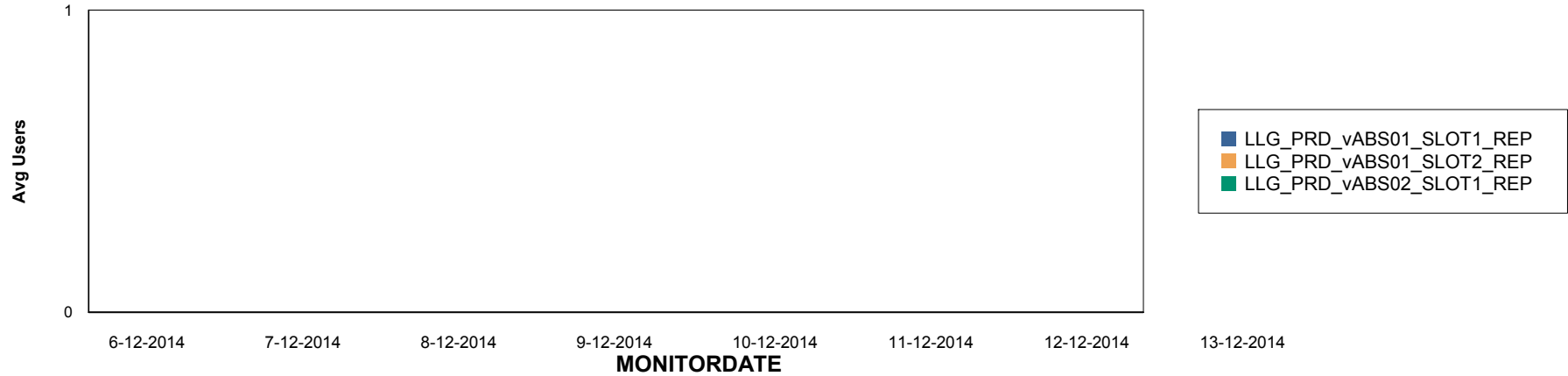
Weekly SLA Customer Report

Customer LLG_Production
Database ID 53

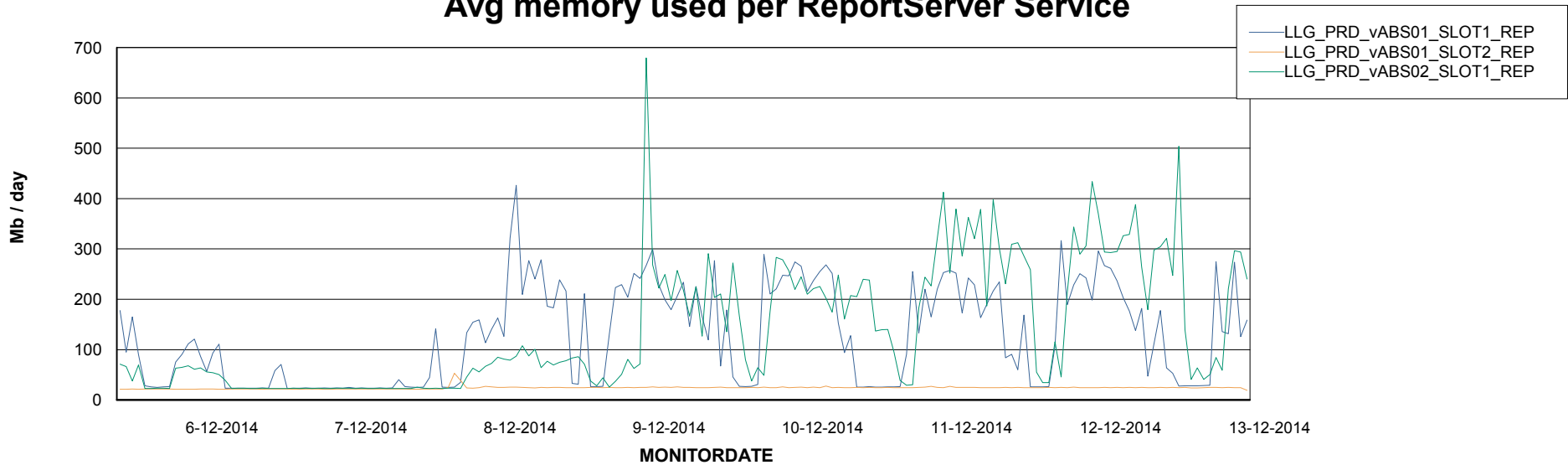


ABSSolute Application ReportServer Services

Disaster per ReportServer



Avg memory used per ReportServer Service



Weekly SLA Customer Report

Customer LLG_Production
Database ID 53



Disaster per ABS component

