

Weekly SLA Customer Report

Customer JWR Production
 Database ID 43



=====
 HARDDISK USAGE JWR_PRD_JWR-ABS-01
 =====

	Used disk space on / (GB)	Total disk space on / (GB)	Free disk space on / (GB)
13-12-2014	27	49	20
12-12-2014	27	49	20
11-12-2014	27	49	20
10-12-2014	27	49	20
9-12-2014	27	49	20
8-12-2014	27	49	20
7-12-2014	27	49	20

=====
 HARDDISK USAGE JWR_PRD_JWR-ABS-02
 =====

	Used disk space on / (GB)	Total disk space on / (GB)	Free disk space on / (GB)
13-12-2014	26	49	20
12-12-2014	26	49	20
11-12-2014	26	49	20
10-12-2014	26	49	20
9-12-2014	26	49	20
8-12-2014	26	49	20
7-12-2014	26	49	20

Weekly SLA Customer Report

Customer JWR Production
 Database ID 43



=====
 HARDDISK USAGE JWR_PRD_JWR-ODB-01
 =====

	Used disk space on / (GB)	Total disk space on / (GB)	Free disk space on / (GB)
13-12-2014	74	90	11
12-12-2014	75	90	11
11-12-2014	75	90	11
10-12-2014	75	90	11
9-12-2014	75	90	11
8-12-2014	75	90	10
7-12-2014	74	90	11

=====
 HARDDISK USAGE JWR_PRD_JWR-ODB-02
 =====

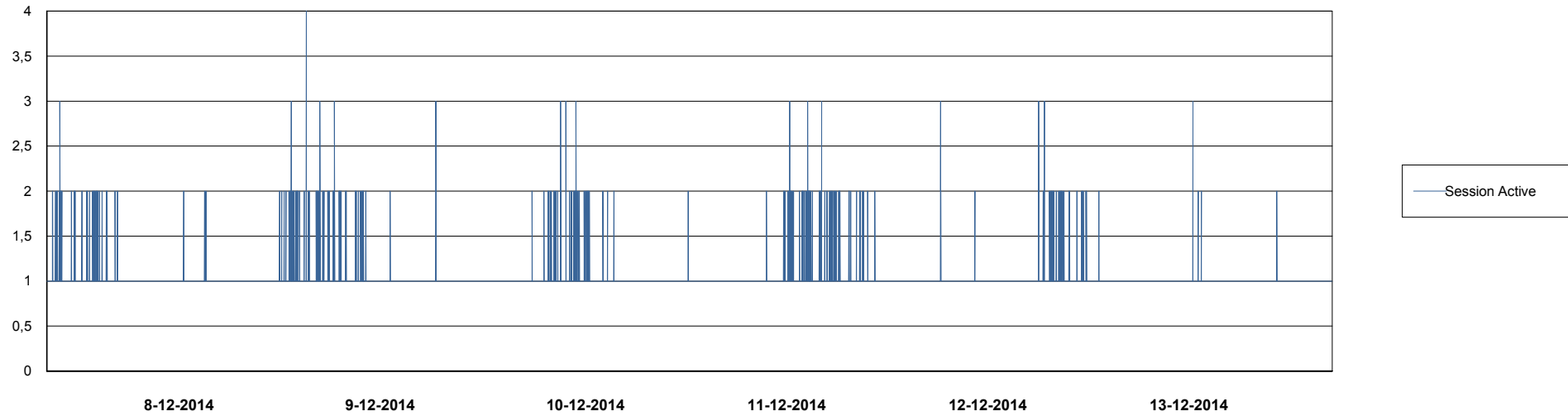
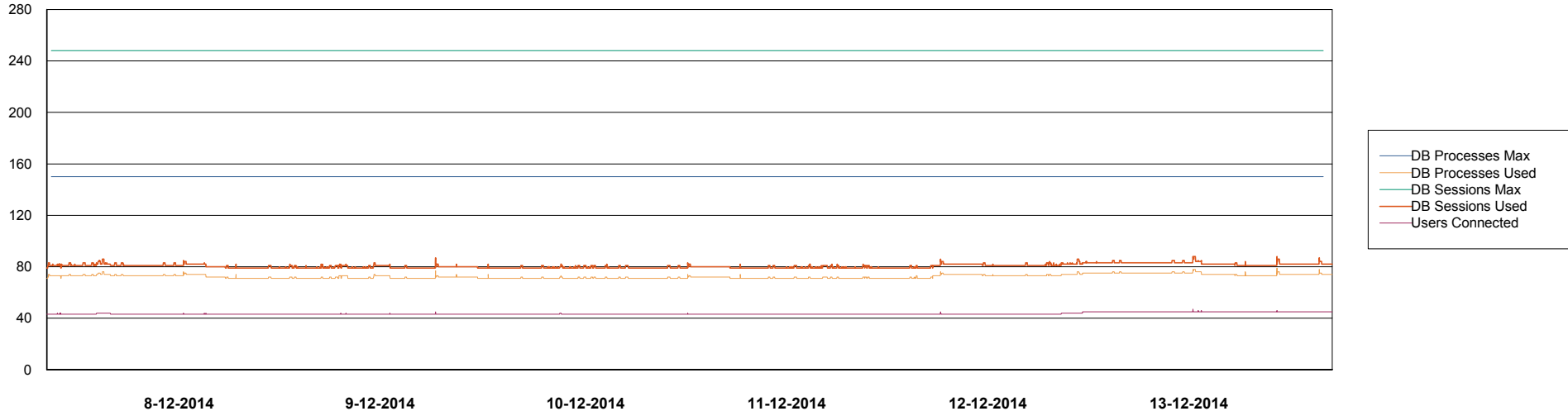
	Used disk space on / (GB)	Total disk space on / (GB)	Free disk space on / (GB)
13-12-2014	92	138	39
12-12-2014	92	138	39
11-12-2014	92	138	39
10-12-2014	92	138	39
9-12-2014	92	138	39
8-12-2014	92	138	39
7-12-2014	92	138	39

Weekly SLA Customer Report

Customer JWR Production
Database ID 43



DATABASE PERFORMANCE JWRDB_Production



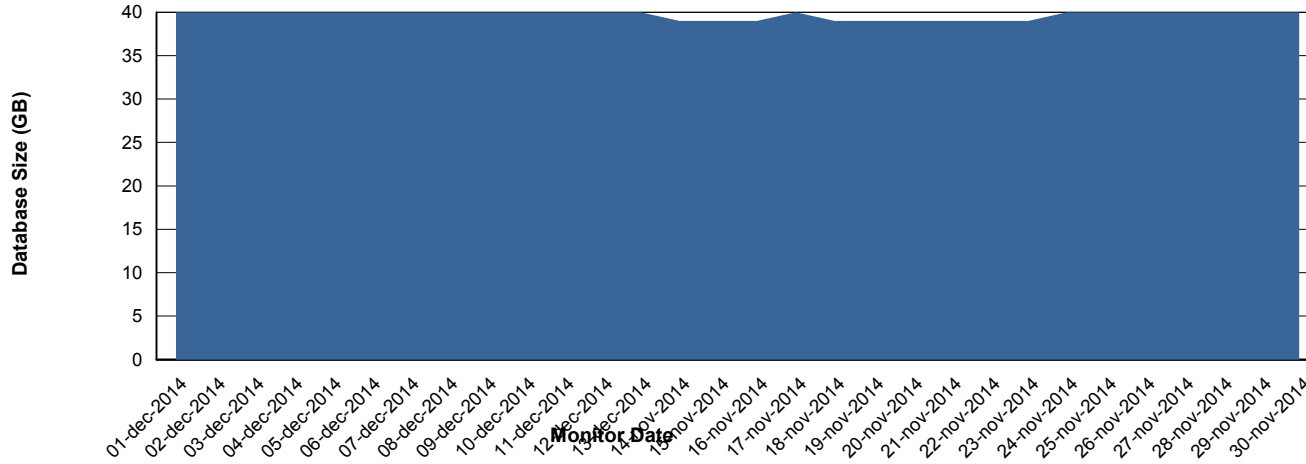
Weekly SLA Customer Report

Customer JWR Production
 Database ID 43



=====
 DATABASE SIZE JWRDB_Production
 =====

Database growth over last month



=====
 DATABASE TABLESPACES JWRDB_Production
 =====

TOTAL DATABASE SIZE PER TABLESPACE

Date	Tablespace Name	Filesize (Gb)	Usedsize (Gb)	Percentage free
13-12-2014	ABSDATA	15	12	20
	INDX	32	28	13
12-12-2014	ABSDATA	15	12	20
	INDX	32	28	13
11-12-2014	ABSDATA	15	12	20
	INDX	32	28	13
10-12-2014	ABSDATA	15	12	20
	INDX	32	28	13
9-12-2014	ABSDATA	15	12	20
	INDX	32	28	13
8-12-2014	ABSDATA	15	12	20
	INDX	32	28	13
7-12-2014	ABSDATA	15	12	20
	INDX	32	28	13

Weekly SLA Customer Report

Customer JWR Production
Database ID 43



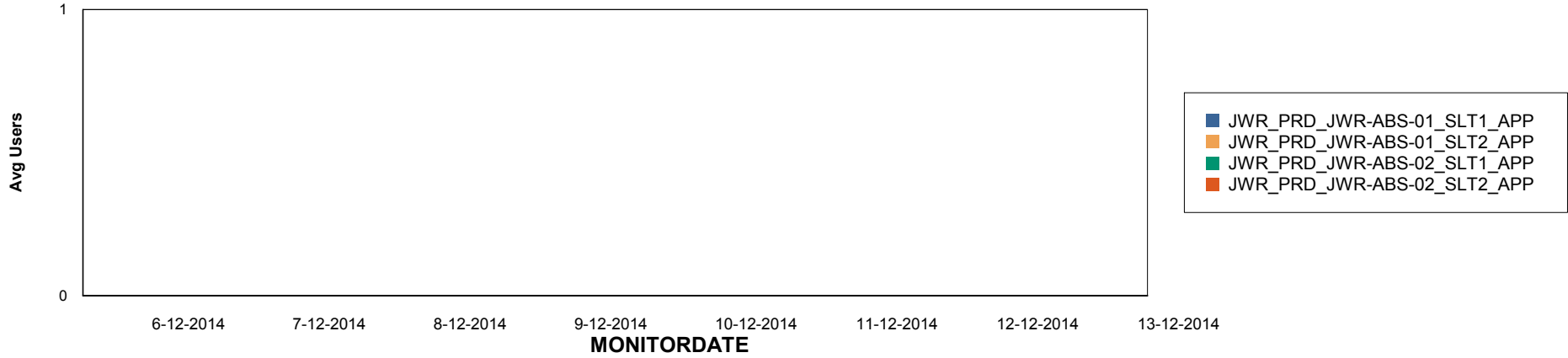
Weekly SLA Customer Report

Customer JWR Production
Database ID 43

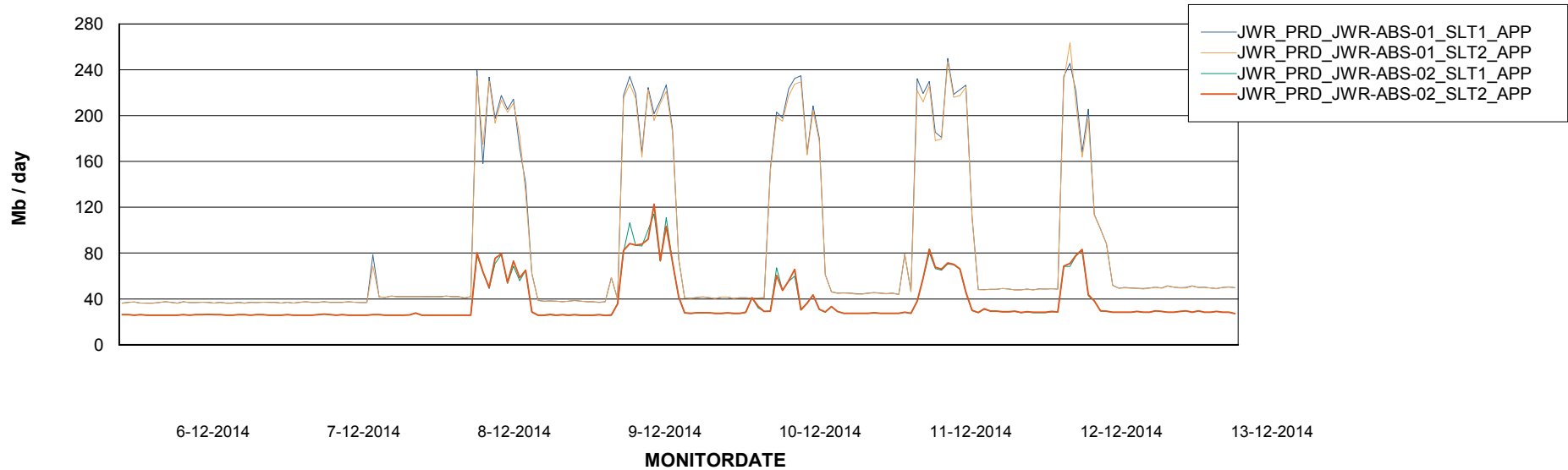


=====
ABSolute Application Server Services
=====

Disaster per ABS Server



Avg memory used per ABS Server Service



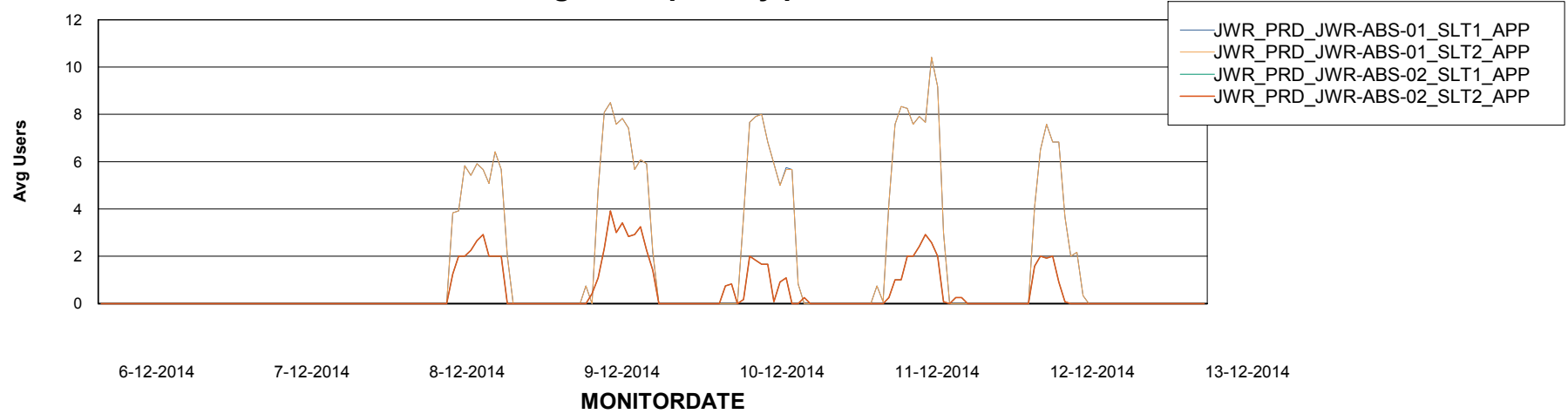
Weekly SLA Customer Report

Customer JWR Production
Database ID 43



=====
ABSolute Application Server Services
=====

Avg users per day per ABS server



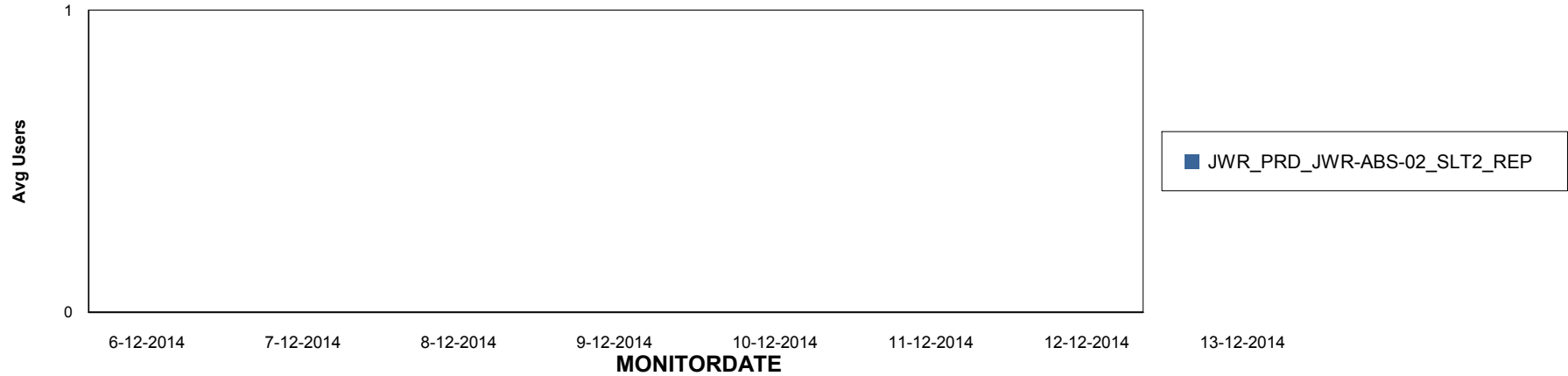
Weekly SLA Customer Report

Customer JWR Production
Database ID 43

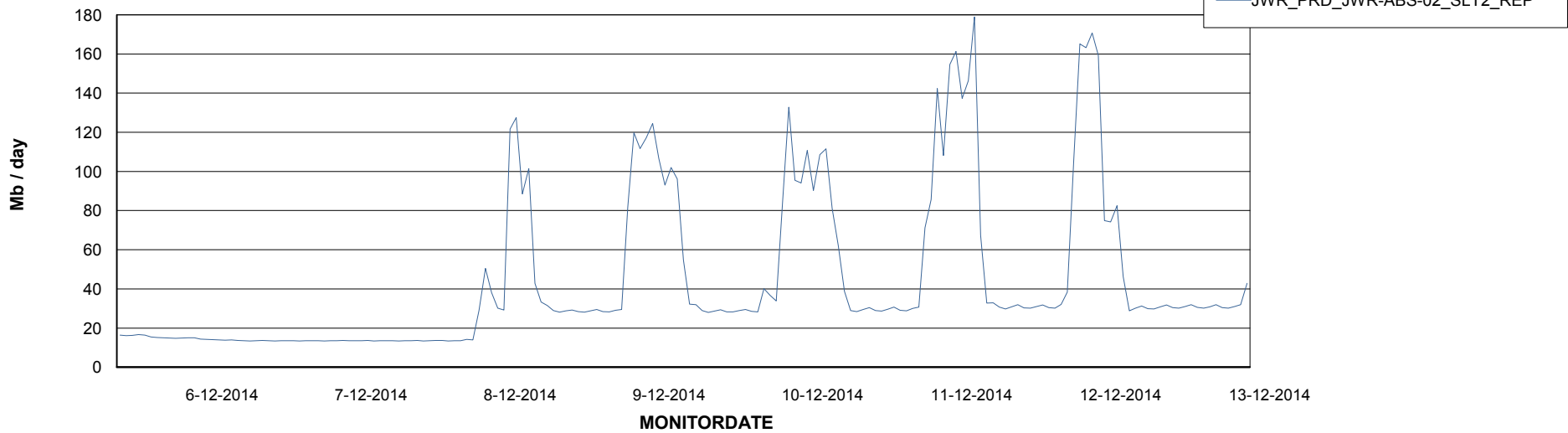


=====
ABSolute Application ReportServer Services
=====

Disaster per ReportServer



Avg memory used per ReportServer Service



Weekly SLA Customer Report

Customer JWR Production
Database ID 43



Disaster per ABS component

