

Weekly SLA Customer Report

Customer BCH Production
 Database ID 28



=====
 HARDDISK USAGE BCH_PRD_ORCDB1
 =====

	Total disk space on C (GB)	Free disk space on C (GB)	Total disk space on D (GB)	Free disk space on D (GB)
13-12-2014	278	157	278	56
12-12-2014	278	158	278	58
11-12-2014	278	158	278	61
10-12-2014	278	158	278	64
9-12-2014	278	158	278	67
8-12-2014	278	158	278	70
7-12-2014	278	158	278	72

=====
 HARDDISK USAGE BCH_PRD_ORCDB2
 =====

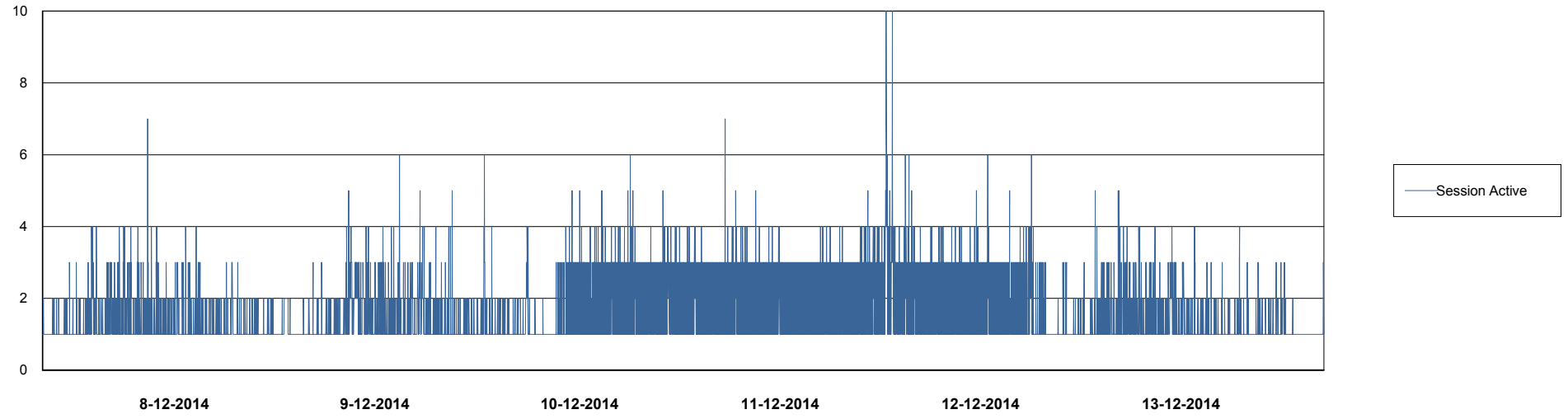
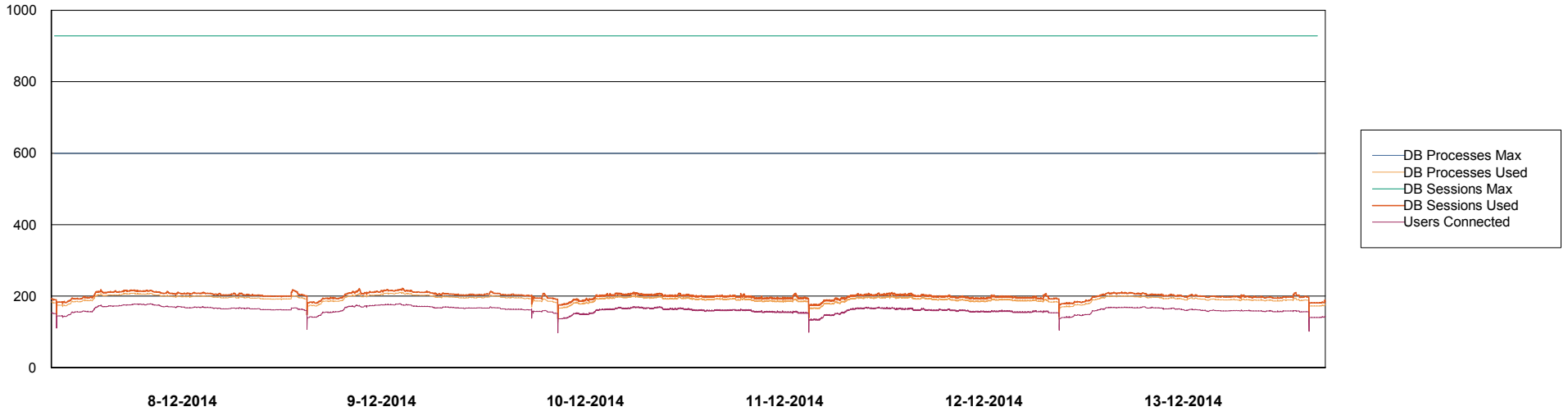
	Total disk space on C (GB)	Free disk space on C (GB)	Total disk space on D (GB)	Free disk space on D (GB)
13-12-2014	278	188	278	53
12-12-2014	278	188	278	55
11-12-2014	278	189	278	58
10-12-2014	278	189	278	61
9-12-2014	278	189	278	64
8-12-2014	278	189	278	67
7-12-2014	278	189	278	69

Weekly SLA Customer Report

Customer BCH Production
Database ID 28



=====
DATABASE PERFORMANCE BCHDB_Production
=====

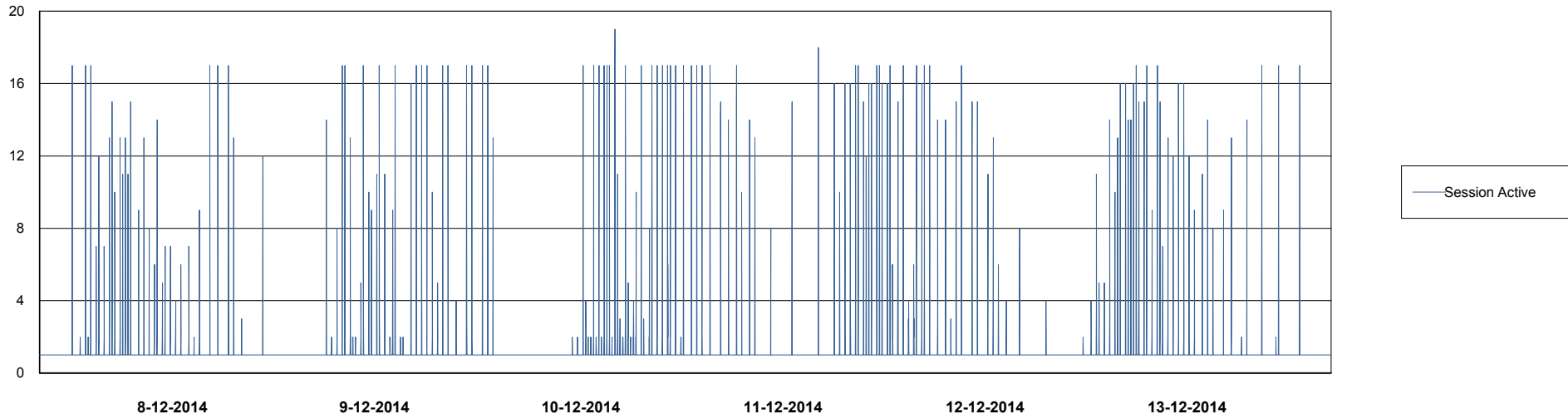
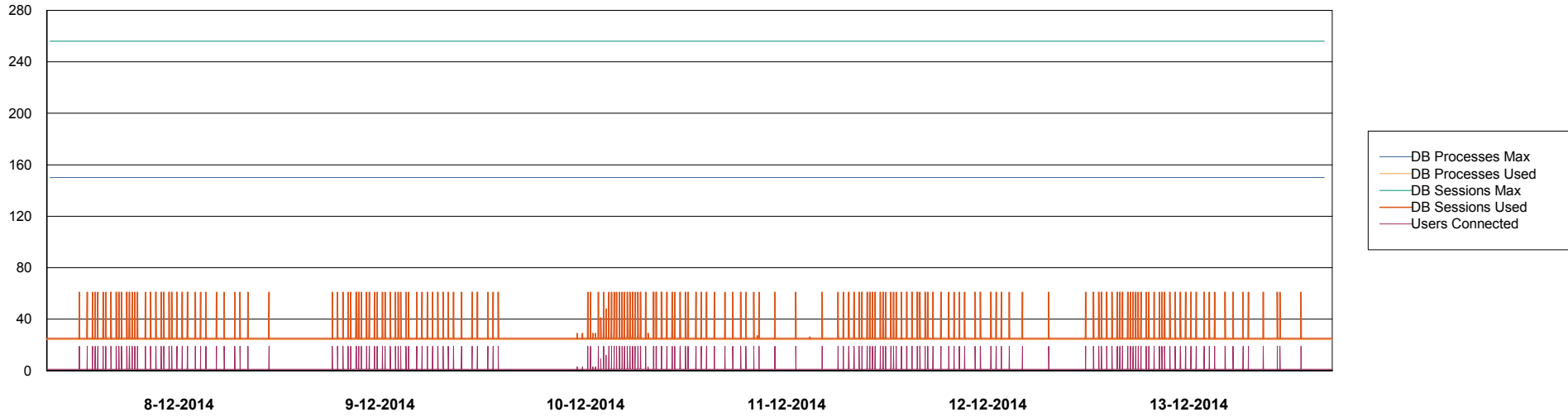


Weekly SLA Customer Report

Customer BCH Production
Database ID 28



DATABASE PERFORMANCE BCHDB_Standby



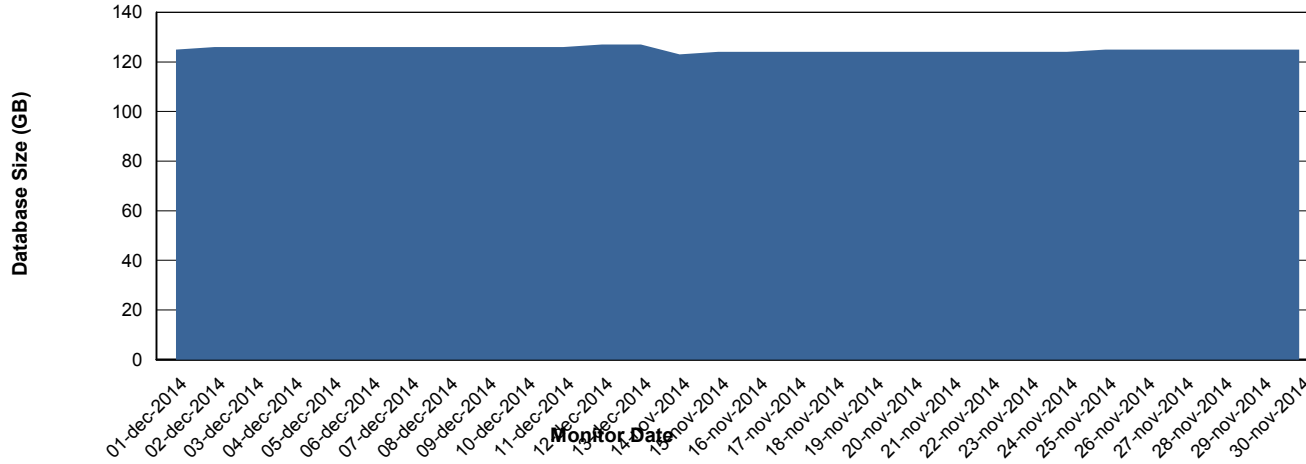
Weekly SLA Customer Report

Customer BCH Production
 Database ID 28



=====
 DATABASE SIZE BCHDB_Production
 =====

Database growth over last month



=====
 DATABASE TABLESPACES BCHDB_Production
 =====

TOTAL DATABASE SIZE PER TABLESPACE

Date	Tablespace Name	Filesize (Gb)	Usedsize (Gb)	Percentage free
13-12-2014	ABSDATA	28	23	18
	INDX	118	101	14
12-12-2014	ABSDATA	28	23	18
	INDX	118	101	14
11-12-2014	ABSDATA	28	23	18
	INDX	118	101	14
10-12-2014	ABSDATA	28	23	18
	INDX	118	101	14
9-12-2014	ABSDATA	28	23	18
	INDX	118	101	14
8-12-2014	ABSDATA	28	23	18
	INDX	118	101	14
7-12-2014	ABSDATA	28	23	18
	INDX	118	101	14

Weekly SLA Customer Report

Customer BCH Production
Database ID 28



=====
STANDBY DATABASE HEALTH BCH Production
=====

Recovery lag for last 7 days

