

# Weekly SLA Customer Report

Customer AUJ\_Production  
 Database ID 41



=====  
 HARDDISK USAGE AUJ\_PRD\_ORACLE\_BI1  
 =====

	Used disk space on \$1 (GB)	Total disk space on \$1 (GB)	Free disk space on \$1 (GB)
13-12-2014	424	526	74
12-12-2014	417	526	81
11-12-2014	417	526	81
10-12-2014	417	526	81
9-12-2014	417	526	82
8-12-2014	416	526	82
7-12-2014	422	526	77

=====  
 HARDDISK USAGE AUJ\_PRD\_ORACLE1  
 =====

	Used disk space on \$1 (GB)	Total disk space on \$1 (GB)	Free disk space on \$1 (GB)
13-12-2014	129	290	67
12-12-2014	130	290	67
11-12-2014	130	290	67
10-12-2014	130	290	67
9-12-2014	130	290	67
8-12-2014	129	290	67
7-12-2014	129	290	67

# Weekly SLA Customer Report

Customer AUJ\_Production  
Database ID 41



=====  
HARDDISK USAGE AUJ\_PRD\_ORACLE2  
=====

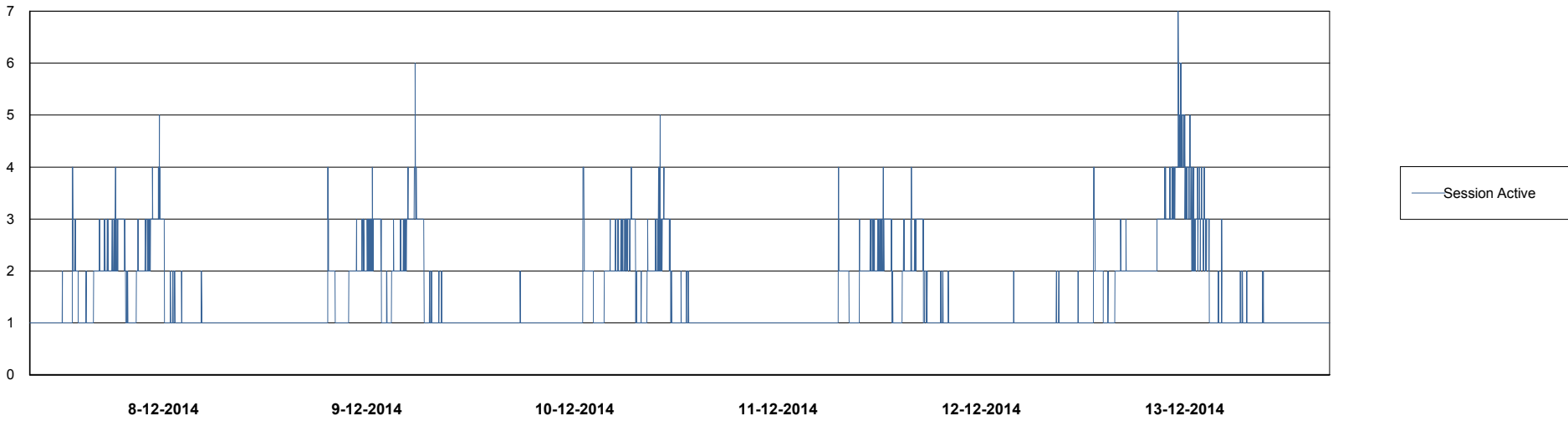
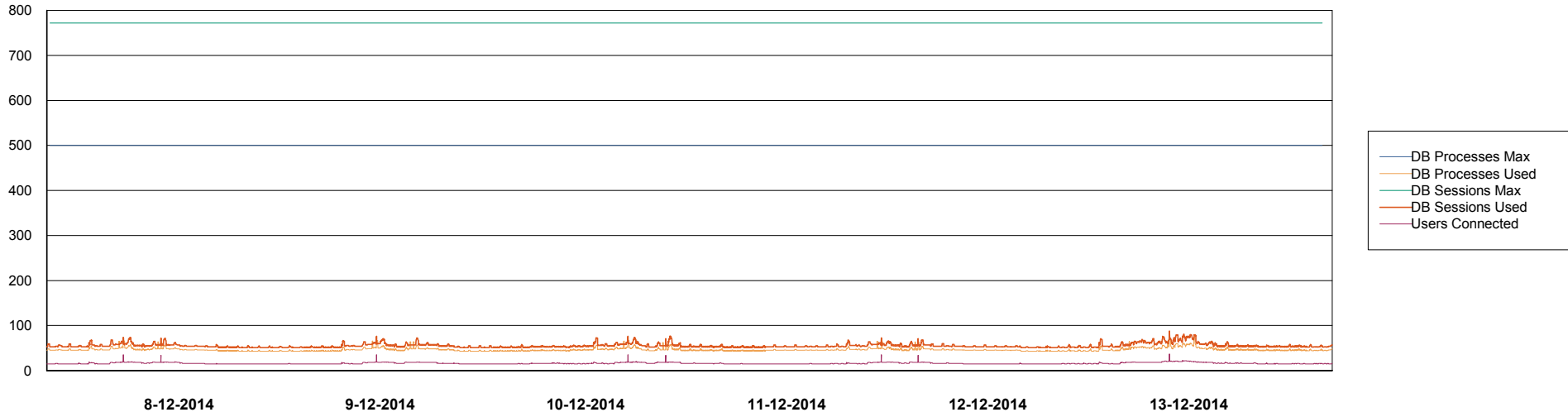
	Used disk space on \$1 (GB)	Total disk space on \$1 (GB)	Free disk space on \$1 (GB)
13-12-2014	6	109	98
12-12-2014	6	109	98
11-12-2014	6	109	98
10-12-2014	6	109	98
9-12-2014	6	109	98
8-12-2014	6	109	98
7-12-2014	6	109	98

# Weekly SLA Customer Report

Customer AUJ\_Production  
Database ID 41



=====  
DATABASE PERFORMANCE      AUJDB\_BI      =====  
=====

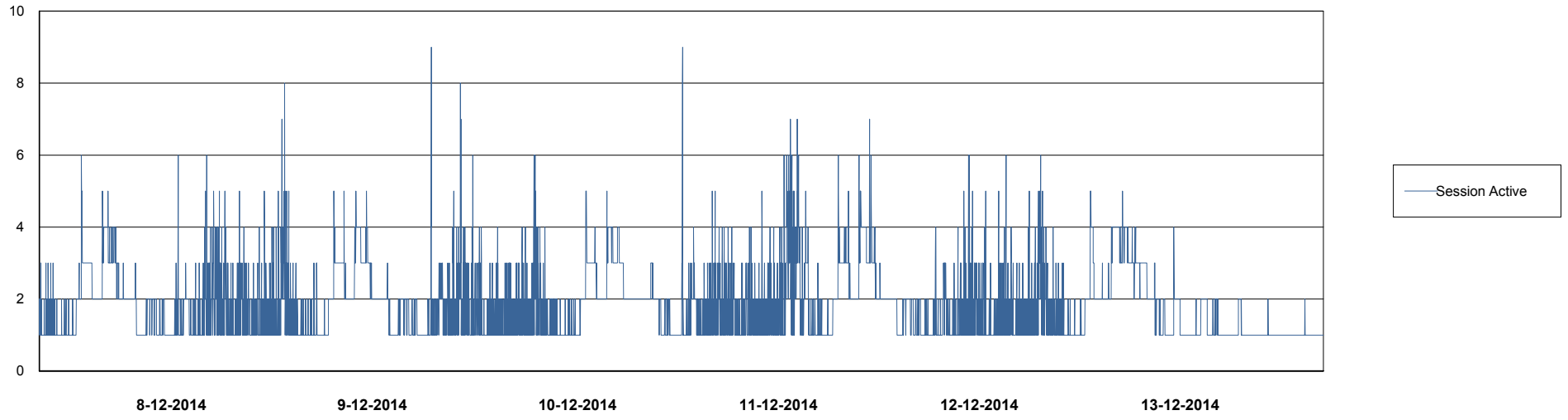
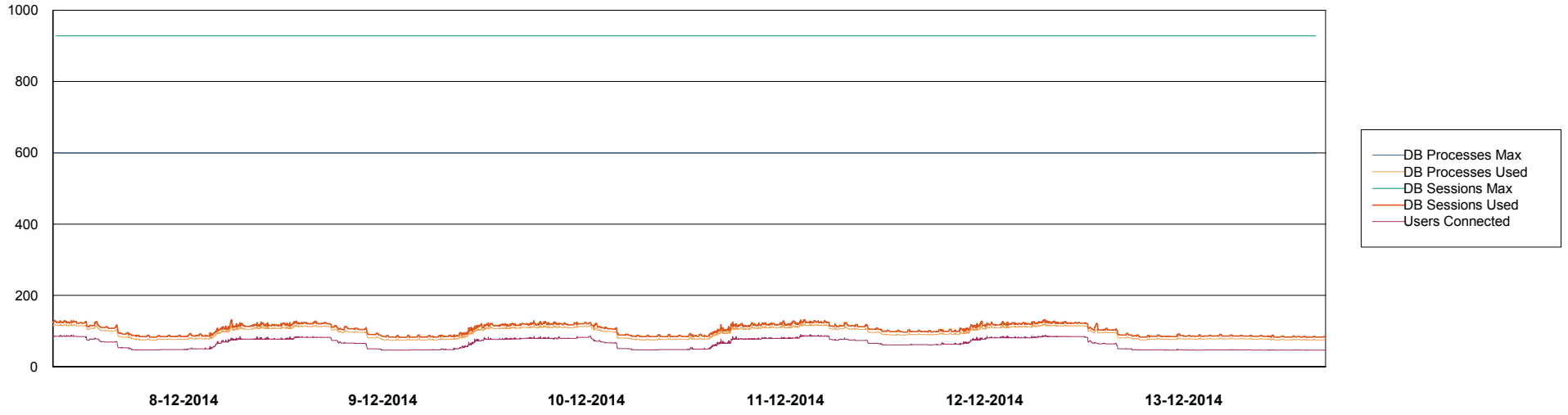


# Weekly SLA Customer Report

Customer AUJ\_Production  
Database ID 41



DATABASE PERFORMANCE AUJDB\_Production



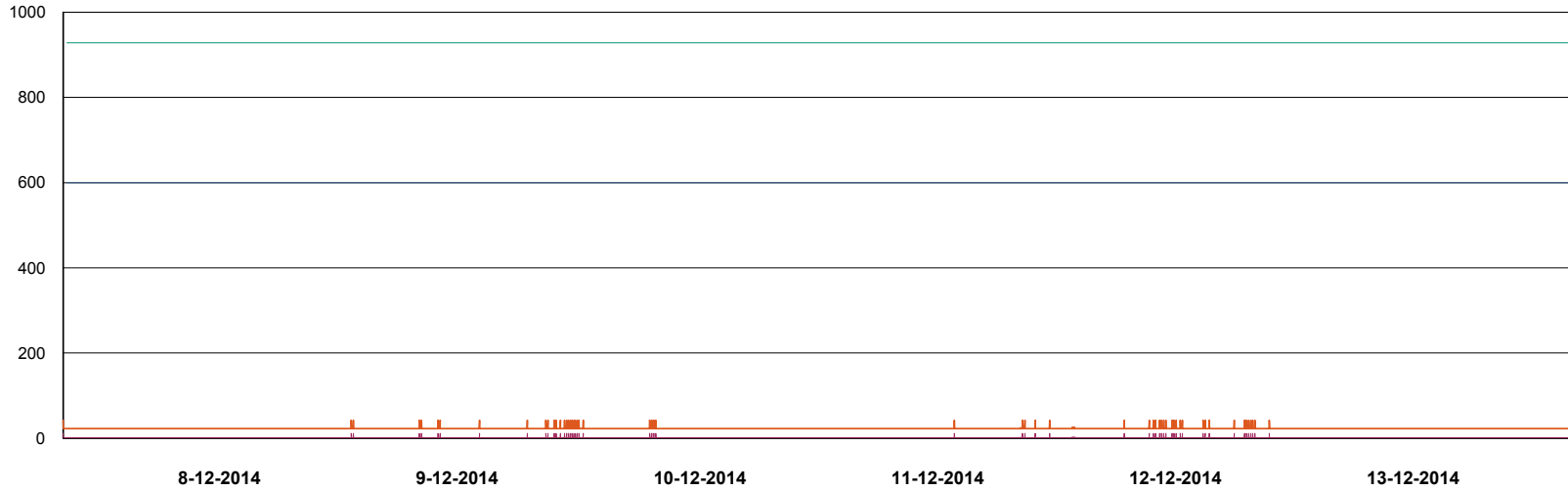
# Weekly SLA Customer Report

Customer AUJ\_Production  
Database ID 41

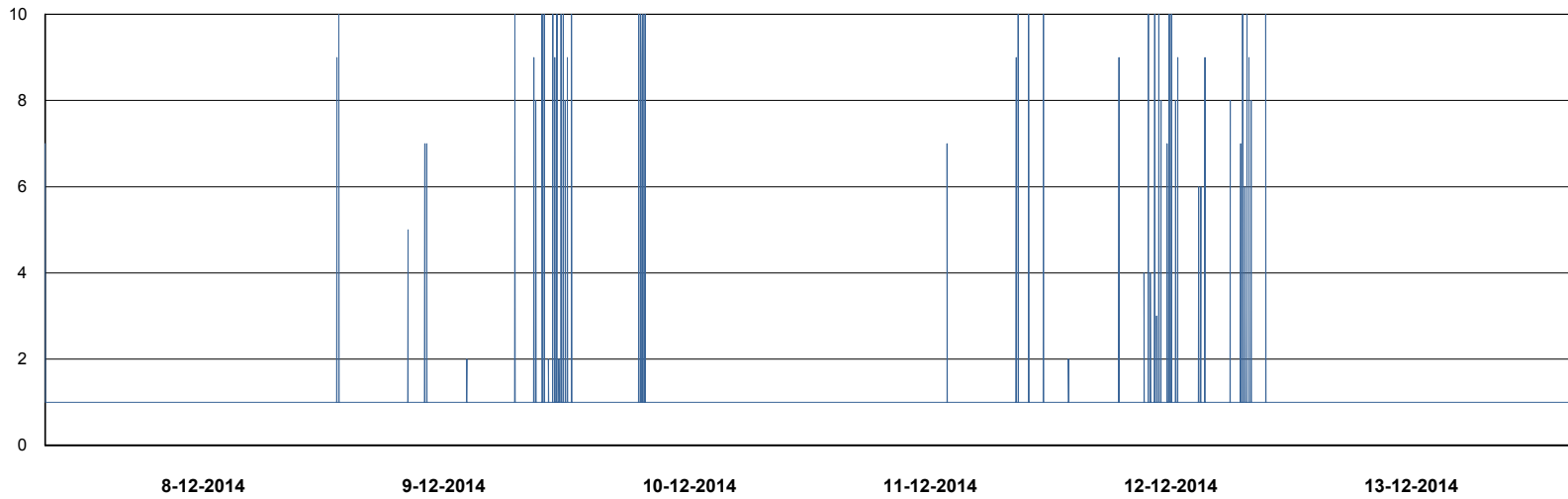


## DATABASE PERFORMANCE

AUJDB\_Standby



- DB Processes Max
- DB Processes Used
- DB Sessions Max
- DB Sessions Used
- Users Connected



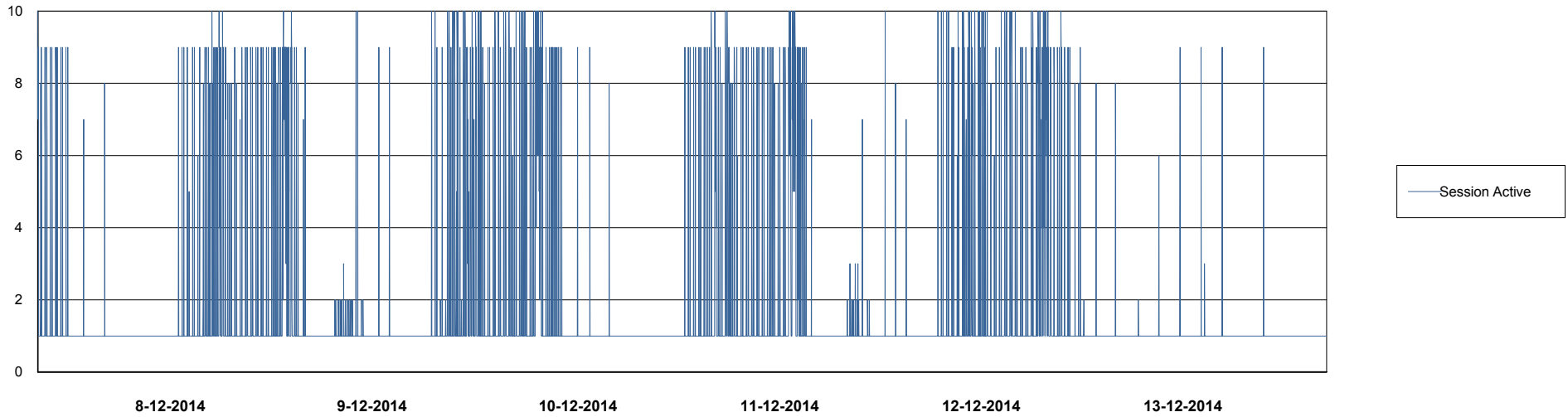
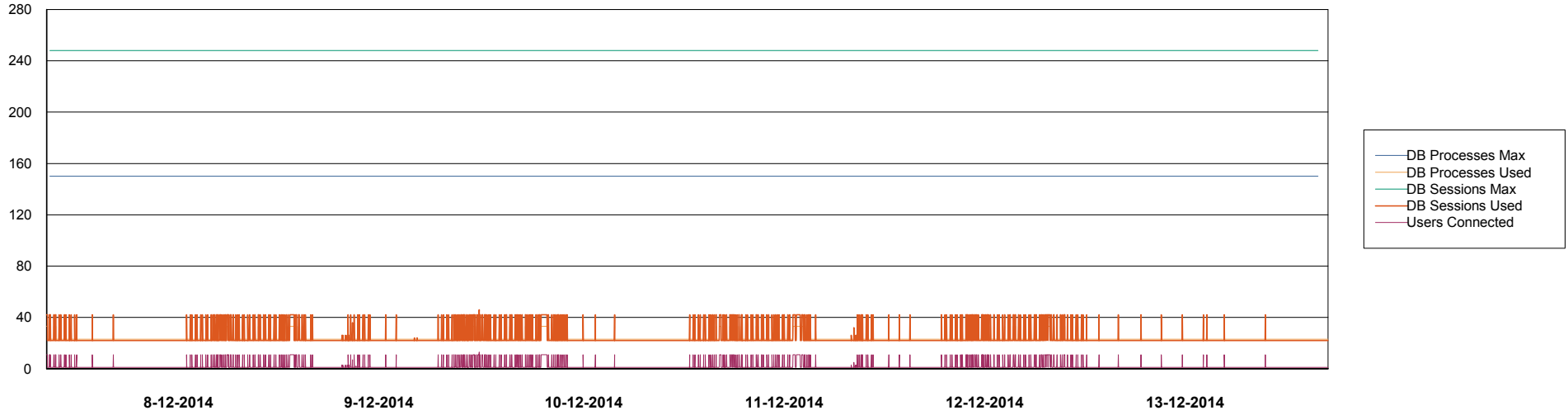
- Session Active

# Weekly SLA Customer Report

Customer AUJ\_Production  
Database ID 41



DATABASE PERFORMANCE AUJDB3\_Standby



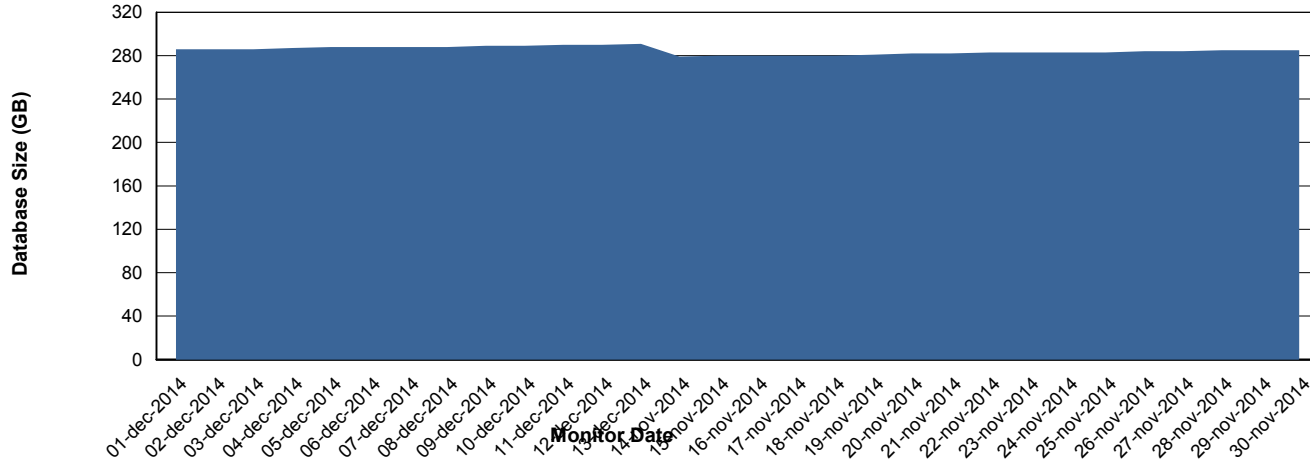
# Weekly SLA Customer Report

Customer AUJ\_Production  
Database ID 41



=====  
DATABASE SIZE AUJDB\_Production  
=====

## Database growth over last month



# Weekly SLA Customer Report

Customer AUJ\_Production  
 Database ID 41



=====  
 DATABASE TABLESPACES AUJDB\_BI  
 =====

TOTAL DATABASE SIZE PER TABLESPACE

Date	Tablespace Name	Filesize (Gb)	Usedsize (Gb)	Percentage free
13-12-2014	ABSDATA	102	86	16
	INDX	171	146	15
12-12-2014	ABSDATA	102	86	16
	INDX	171	146	15
11-12-2014	ABSDATA	102	86	16
	INDX	171	146	15
10-12-2014	ABSDATA	102	86	16
	INDX	171	146	15
9-12-2014	ABSDATA	102	86	16
	INDX	171	146	15
8-12-2014	ABSDATA	102	86	16
	INDX	171	146	15
7-12-2014	ABSDATA	102	86	16
	INDX	171	146	15

# Weekly SLA Customer Report

Customer AUJ\_Production  
 Database ID 41



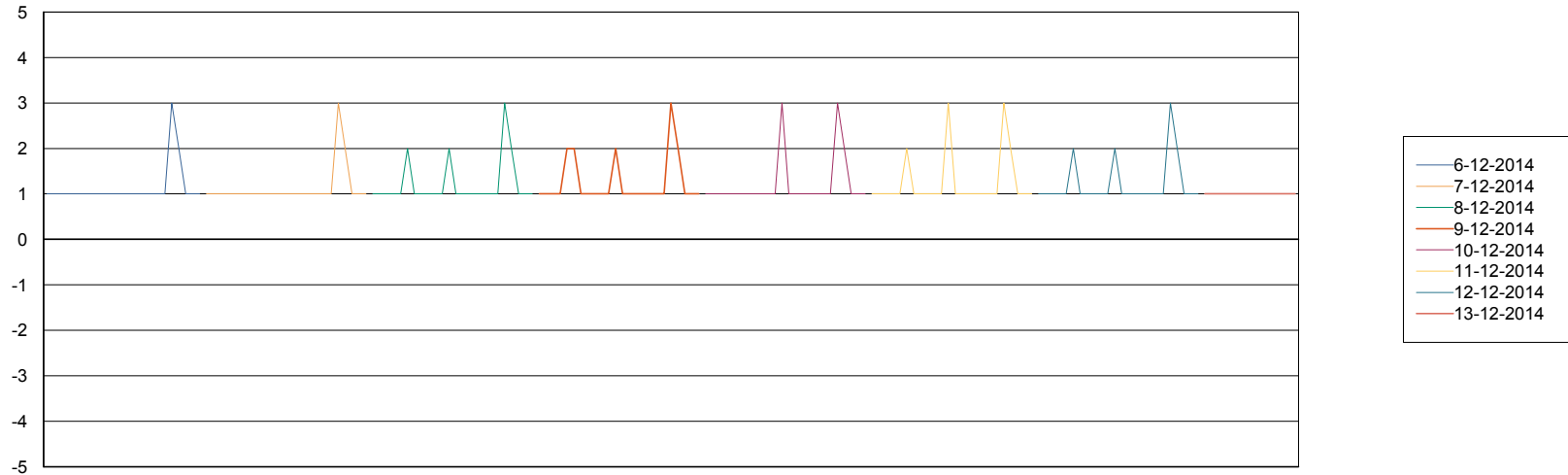
=====  
 DATABASE TABLESPACES AUJDB\_Production  
 =====

TOTAL DATABASE SIZE PER TABLESPACE

Date	Tablespace Name	Filesize (Gb)	Usedsize (Gb)	Percentage free
13-12-2014	ABSDATA	146	125	14
	INDX	189	164	13
12-12-2014	ABSDATA	146	125	14
	INDX	189	164	13
11-12-2014	ABSDATA	146	125	14
	INDX	189	163	14
10-12-2014	ABSDATA	146	125	14
	INDX	189	163	14
9-12-2014	ABSDATA	146	125	14
	INDX	189	163	14
8-12-2014	ABSDATA	146	124	15
	INDX	189	162	14
7-12-2014	ABSDATA	146	124	15
	INDX	189	162	14

=====  
 STANDBY DATABASE HEALTH AUJ\_Production  
 =====

Recovery lag for last 7 days



# Weekly SLA Customer Report

---

Customer AUJ\_Production  
Database ID 41

