

Weekly SLA Customer Report

Customer VEN_Production
Database ID 35



=====
HARDDISK USAGE VEN_PRD_ORACLE1
=====

	Free disk space on C (GB)	Free disk space on D (GB)	Free disk space on E (GB)
6-12-2014	175	115	122
5-12-2014	177	115	123
4-12-2014	178	115	123
3-12-2014	178	115	123
2-12-2014	179	115	125
1-12-2014	180	115	126
30-11-2014	180	115	125

=====
HARDDISK USAGE VEN_PRD_ORACLE2
=====

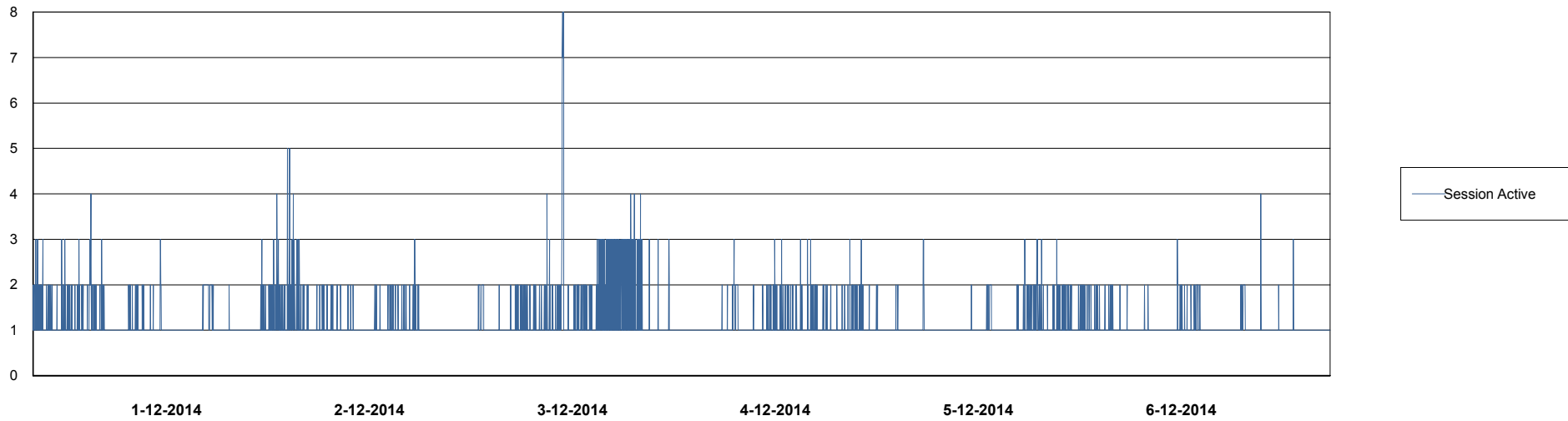
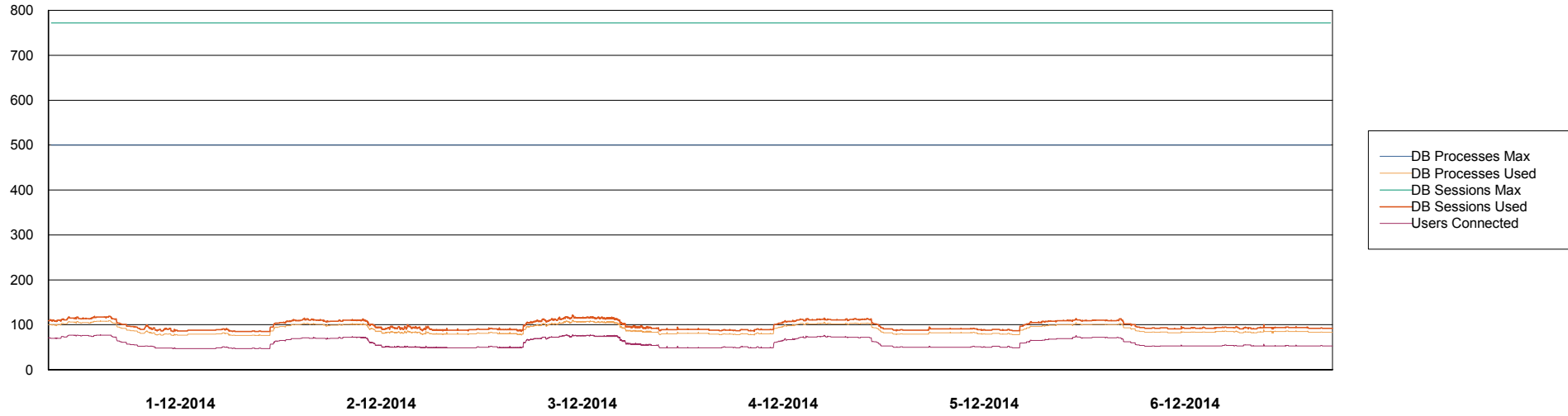
	Free disk space on C (GB)	Free disk space on D (GB)	Free disk space on E (GB)
6-12-2014	309	306	124
5-12-2014	310	306	125
4-12-2014	311	306	125
3-12-2014	313	306	125
2-12-2014	314	306	127
1-12-2014	315	306	128
30-11-2014	315	306	127

Weekly SLA Customer Report

Customer VEN_Production
Database ID 35



DATABASE PERFORMANCE VENDB_Production

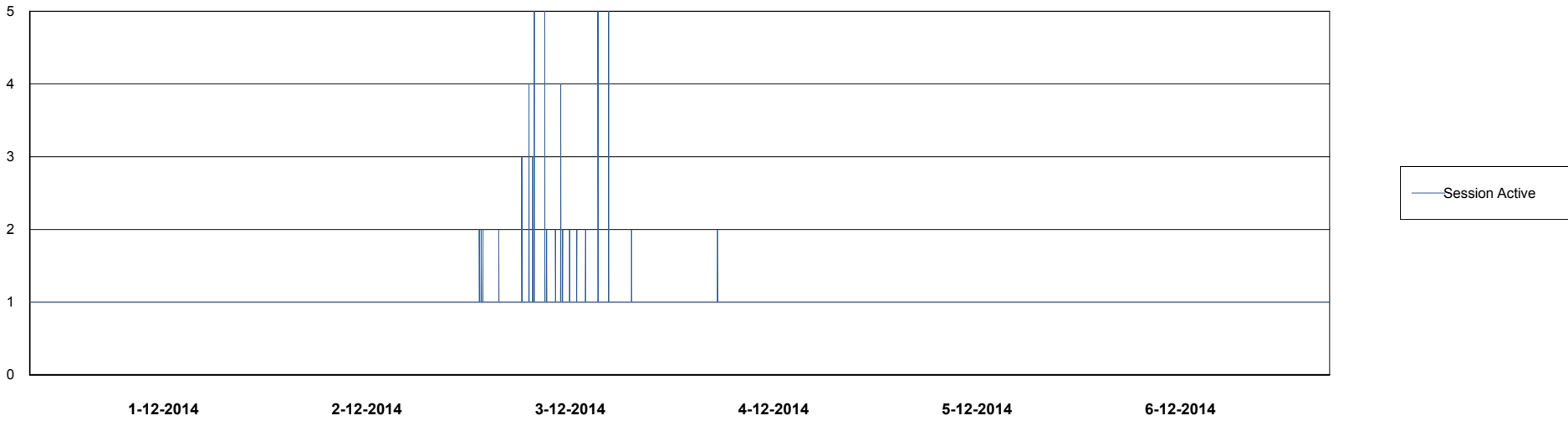
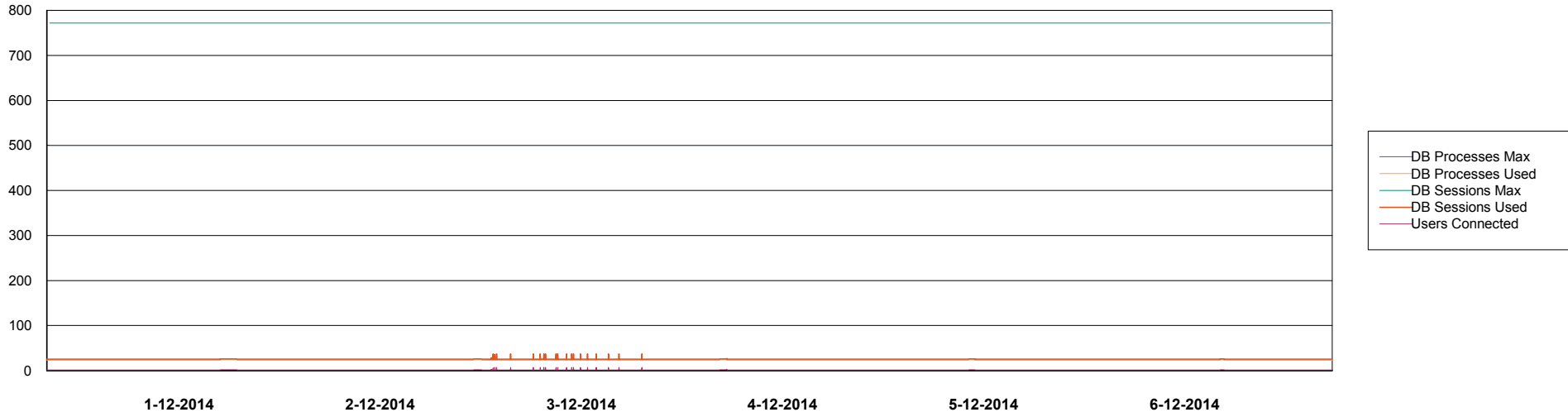


Weekly SLA Customer Report

Customer VEN_Production
Database ID 35



=====
DATABASE PERFORMANCE VENDB_Standby
=====



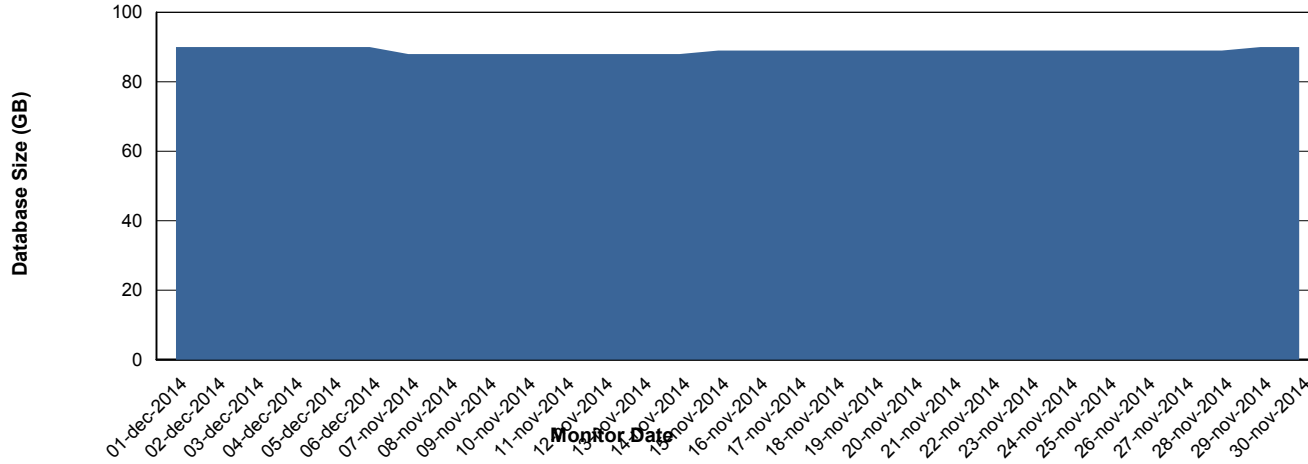
Weekly SLA Customer Report

Customer VEN_Production
 Database ID 35



=====
 DATABASE SIZE VENDB_Production
 =====

Database growth over last month



=====
 DATABASE TABLESPACES VENDB_Production
 =====

TOTAL DATABASE SIZE PER TABLESPACE

Date	Tablespace Name	Filesize (Gb)	Usedsize (Gb)	Percentage free
6-12-2014	ABSDATA	34	26	24
	INDX	88	63	28
5-12-2014	ABSDATA	34	26	24
	INDX	88	63	28
4-12-2014	ABSDATA	34	26	24
	INDX	88	63	28
3-12-2014	ABSDATA	34	26	24
	INDX	88	63	28
2-12-2014	ABSDATA	34	26	24
	INDX	88	63	28
1-12-2014	ABSDATA	34	26	24
	INDX	88	63	28
30-11-2014	ABSDATA	34	26	24
	INDX	88	62	30

Weekly SLA Customer Report

Customer VEN_Production
Database ID 35



=====
STANDBY DATABASE HEALTH VEN_Production
=====

Recovery lag for last 7 days

