

Weekly SLA Customer Report

Customer PCO Production
 Database ID 44



=====
 HARDDISK USAGE PCO_PRD_ORACLE1
 =====

	Total disk space on C (GB)	Free disk space on C (GB)	Total disk space on D (GB)	Free disk space on D (GB)
6-12-2014	279	184	838	155
5-12-2014	279	184	838	157
4-12-2014	279	184	838	138
3-12-2014	279	184	838	95
2-12-2014	279	184	838	85
1-12-2014	279	184	838	122
30-11-2014	279	184	838	146

=====
 HARDDISK USAGE PCO_PRD_ORACLE2
 =====

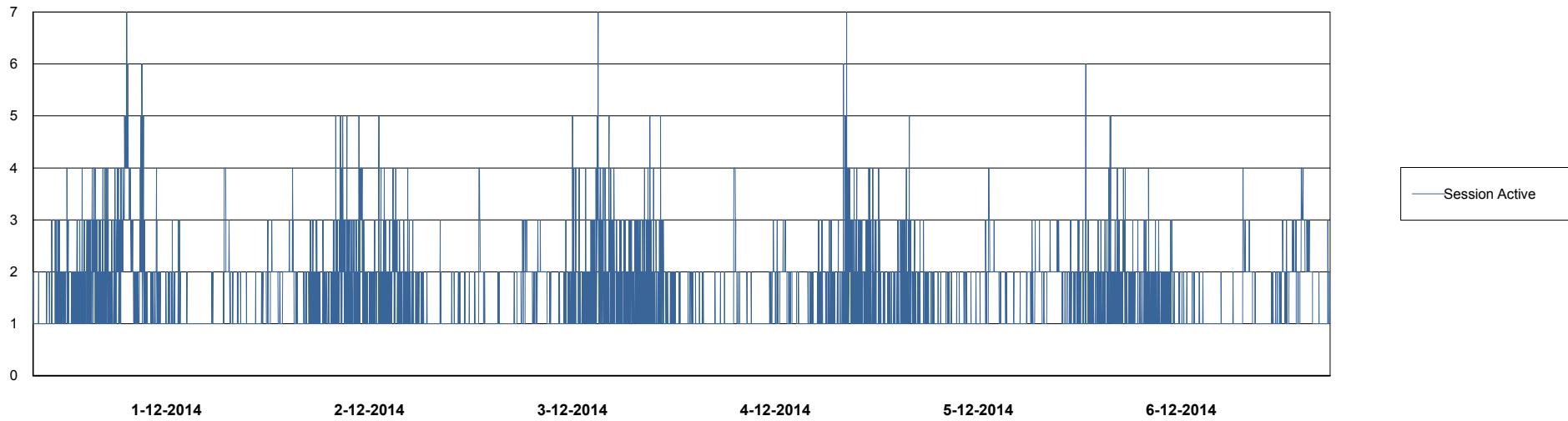
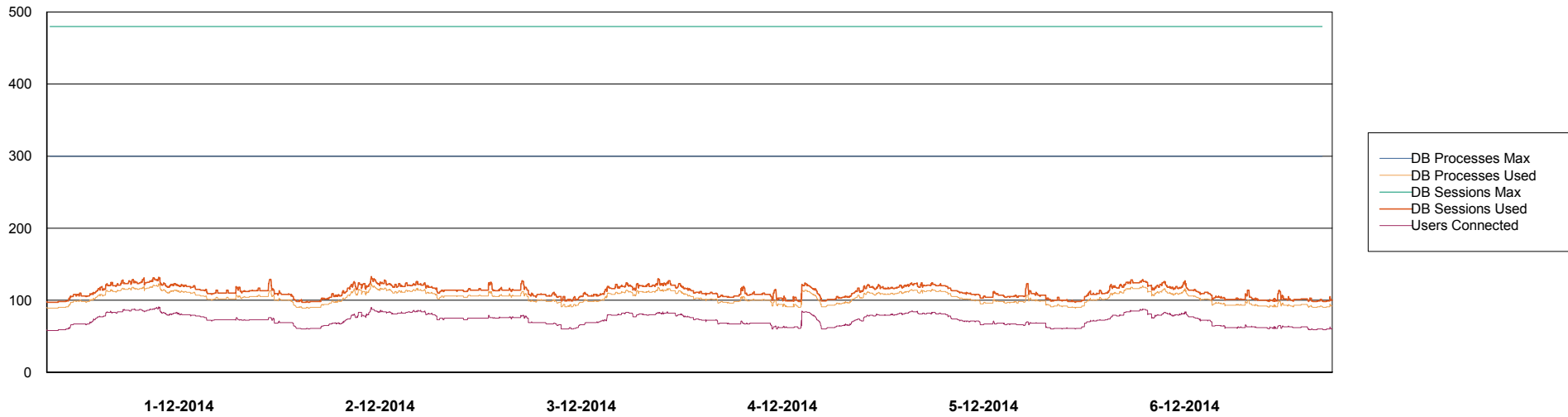
	Total disk space on C (GB)	Free disk space on C (GB)	Total disk space on D (GB)	Free disk space on D (GB)
6-12-2014	279	223	838	461
5-12-2014	279	223	838	463
4-12-2014	279	223	838	466
3-12-2014	279	223	838	470
2-12-2014	279	223	838	473
1-12-2014	279	223	838	476
30-11-2014	279	223	838	478

Weekly SLA Customer Report

Customer PCO Production
Database ID 44



DATABASE PERFORMANCE PCODB_Production

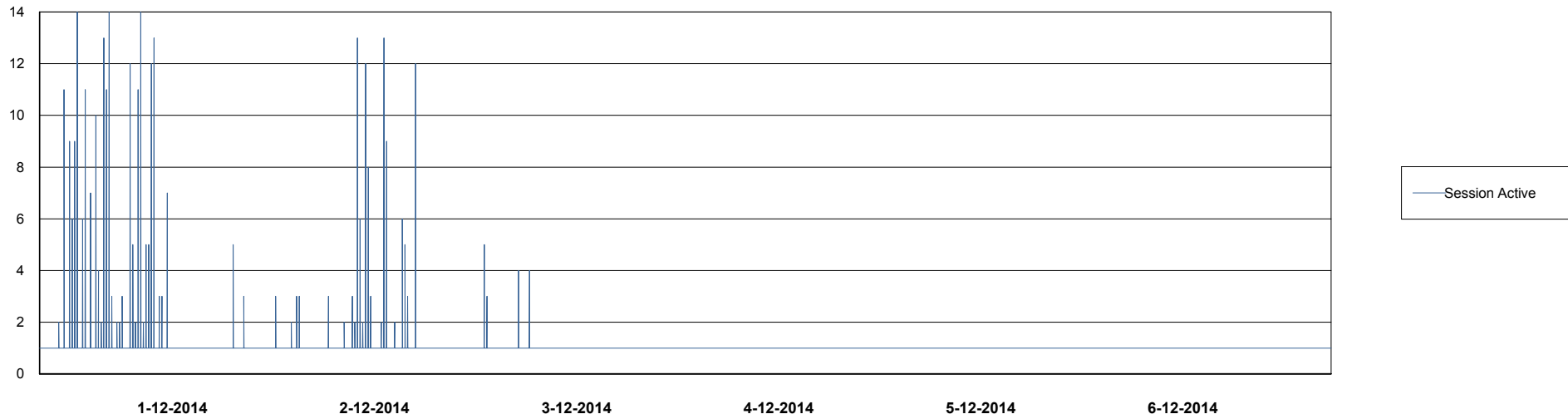
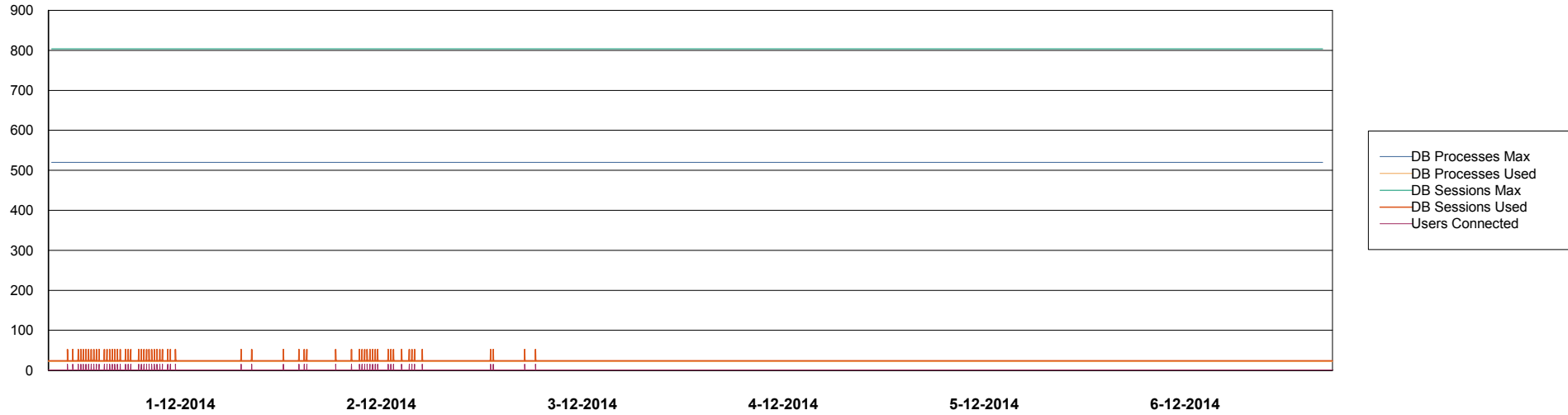


Weekly SLA Customer Report

Customer PCO Production
Database ID 44



DATABASE PERFORMANCE PCODB_Standby



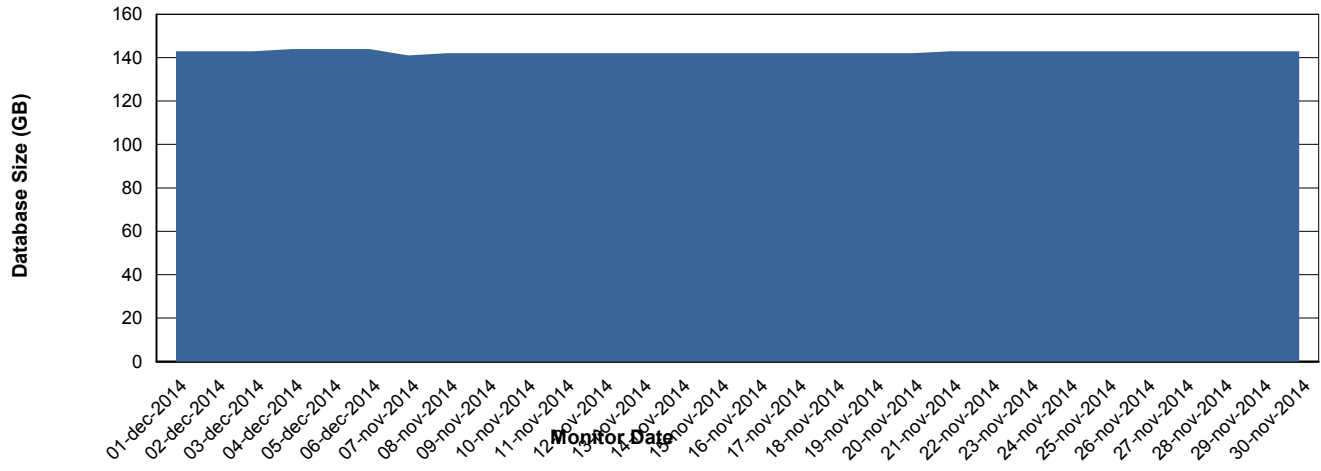
Weekly SLA Customer Report

Customer PCO Production
 Database ID 44



=====
 DATABASE SIZE PCODB_Production
 =====

Database growth over last month



=====
 DATABASE TABLESPACES PCODB_Production
 =====

TOTAL DATABASE SIZE PER TABLESPACE

Date	Tablespace Name	Filesize (Gb)	Usedsize (Gb)	Percentage free
6-12-2014	ABSDATA	72	59	18
	INDX	99	83	16
5-12-2014	ABSDATA	72	59	18
	INDX	99	83	16
4-12-2014	ABSDATA	72	59	18
	INDX	99	83	16
3-12-2014	ABSDATA	72	59	18
	INDX	99	83	16
2-12-2014	ABSDATA	72	59	18
	INDX	99	83	16
1-12-2014	ABSDATA	72	59	18
	INDX	99	83	16
30-11-2014	ABSDATA	72	59	18
	INDX	99	83	16

Weekly SLA Customer Report

Customer PCO Production
Database ID 44



=====
STANDBY DATABASE HEALTH PCO Production
=====

Recovery lag for last 7 days

