

# Weekly SLA Customer Report

Customer NIX\_Production  
Database ID 51



=====  
HARDDISK USAGE NIX\_PRD\_ABSAPP1  
=====

	Total disk space on C (GB)	Free disk space on C (GB)
6-12-2014	136	91
5-12-2014	136	91
4-12-2014	136	91
3-12-2014	136	91
2-12-2014	136	91
1-12-2014	136	91
30-11-2014	136	91

=====  
HARDDISK USAGE NIX\_PRD\_ABSWEB1  
=====

	Total disk space on C (GB)	Free disk space on C (GB)
6-12-2014	930	760
5-12-2014	930	763
4-12-2014	930	769
3-12-2014	930	770
2-12-2014	930	770
1-12-2014	930	770
30-11-2014	930	771

# Weekly SLA Customer Report

Customer      NIX\_Production  
 Database ID    51



=====  
 HARDDISK USAGE    NIX\_PRD\_ORACLE\_B11  
 =====

	Total disk space on C (GB)	Free disk space on C (GB)	Total disk space on D (GB)	Free disk space on D (GB)	Total disk space on E (GB)	Free disk space on E (GB)
6-12-2014	99	56	279	180	99	31
5-12-2014	99	56	279	180	99	31
4-12-2014	99	56	279	180	99	31
3-12-2014	99	56	279	180	99	30
2-12-2014	99	56	279	180	99	31
1-12-2014	99	56	279	180	99	31
30-11-2014	99	56	279	180	99	31

=====  
 HARDDISK USAGE    NIX\_PRD\_ORCDB1  
 =====

	Total disk space on C (GB)	Free disk space on C (GB)	Total disk space on D (GB)	Free disk space on D (GB)	Total disk space on E (GB)	Free disk space on E (GB)
6-12-2014	136	68	136	39	136	51
5-12-2014	136	68	136	39	136	53
4-12-2014	136	68	136	39	136	53
3-12-2014	136	68	136	39	136	53
2-12-2014	136	68	136	39	136	53
1-12-2014	136	68	136	39	136	53
30-11-2014	136	68	136	39	136	53

## Weekly SLA Customer Report

Customer      NIX\_Production  
 Database ID    51



=====  
 HARDDISK USAGE    NIX\_PRD\_ORCDB2  
 =====

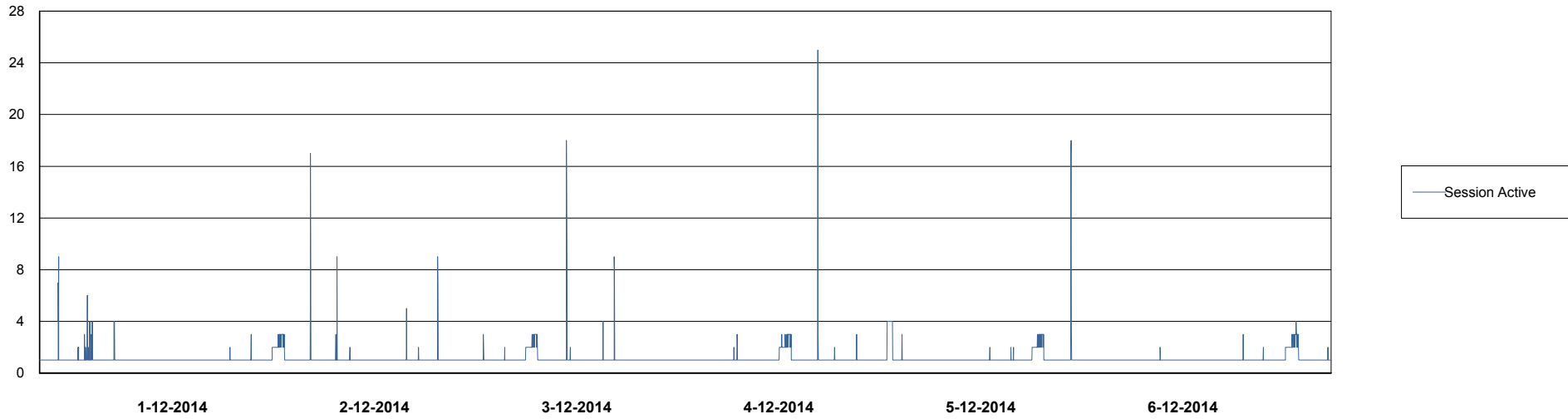
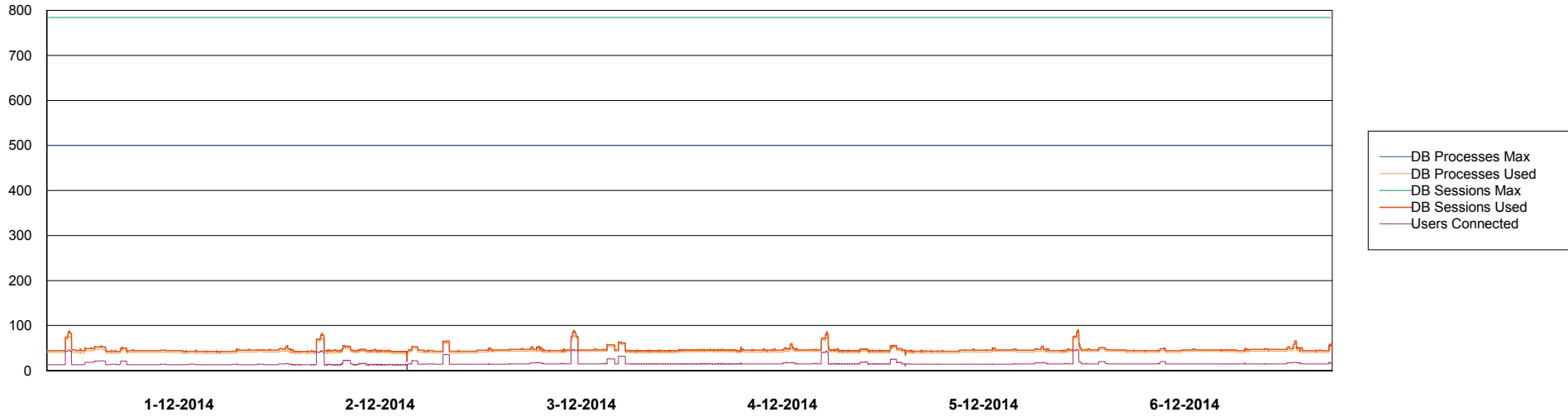
	Total disk space on C (GB)	Free disk space on C (GB)	Total disk space on D (GB)	Free disk space on D (GB)	Total disk space on E (GB)	Free disk space on E (GB)
6-12-2014	279	92	279	68	279	67
5-12-2014	279	92	279	68	279	73
4-12-2014	279	92	279	68	279	93
3-12-2014	279	92	279	68	279	105
2-12-2014	279	92	279	68	279	53
1-12-2014	279	91	279	68	279	17
30-11-2014	279	92	279	68	279	22

# Weekly SLA Customer Report

Customer NIX\_Production  
Database ID 51



DATABASE PERFORMANCE NIXDB\_BI

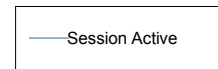
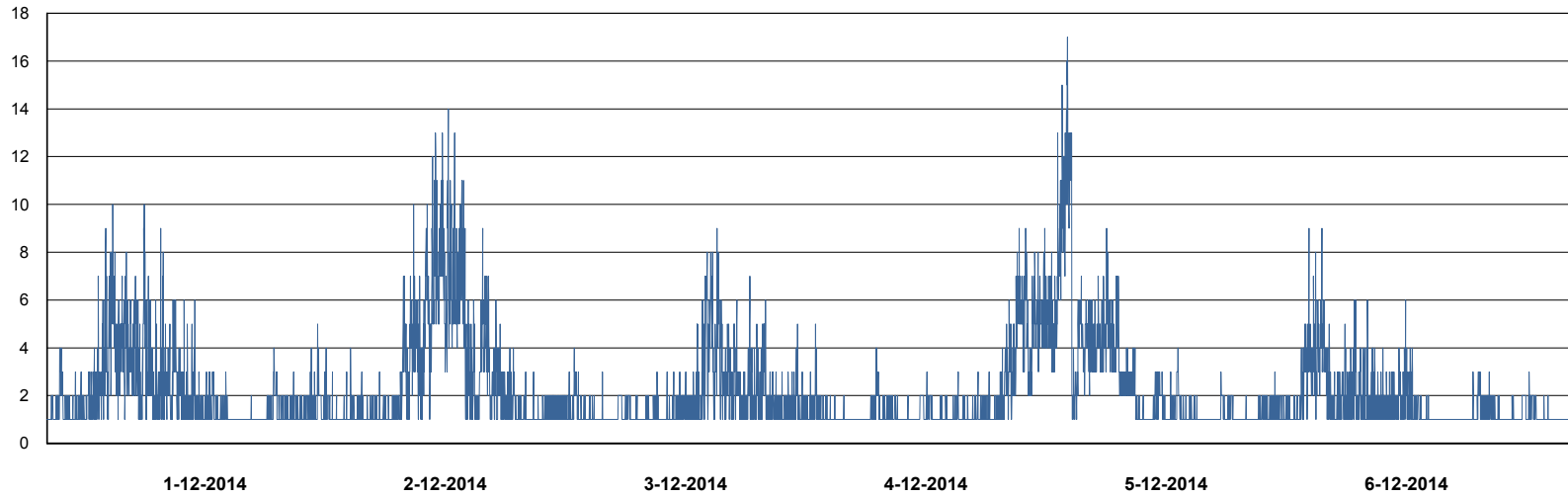
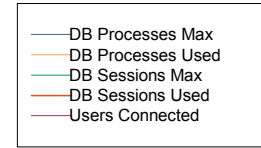
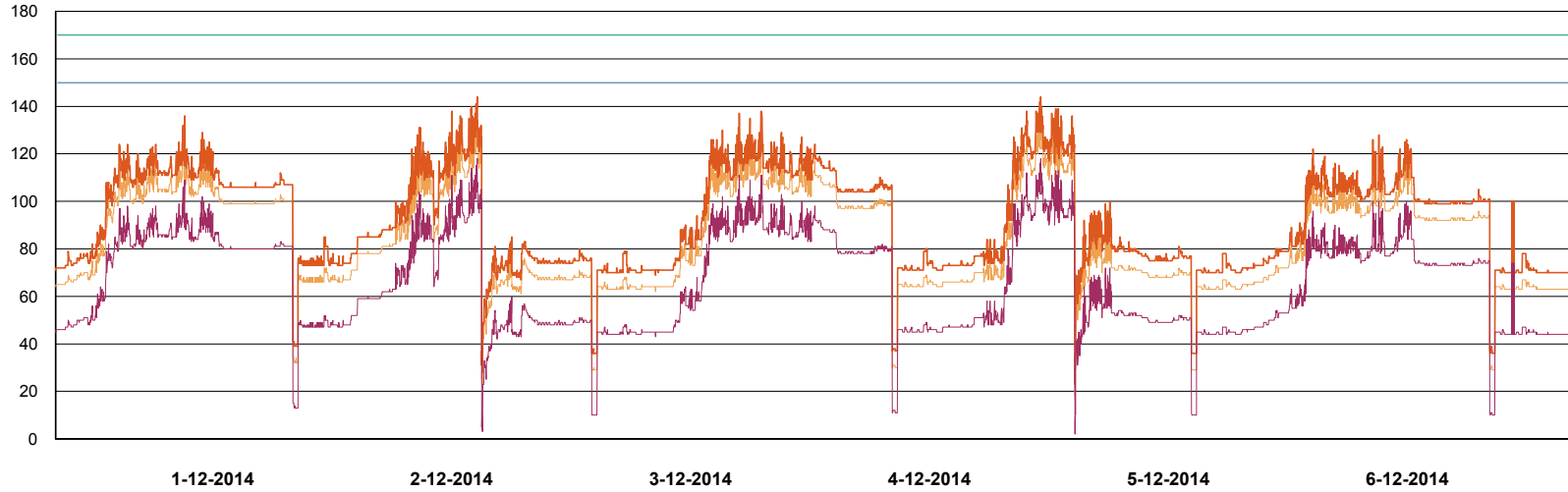


# Weekly SLA Customer Report

Customer NIX\_Production  
Database ID 51



DATABASE PERFORMANCE NIXDB\_Production

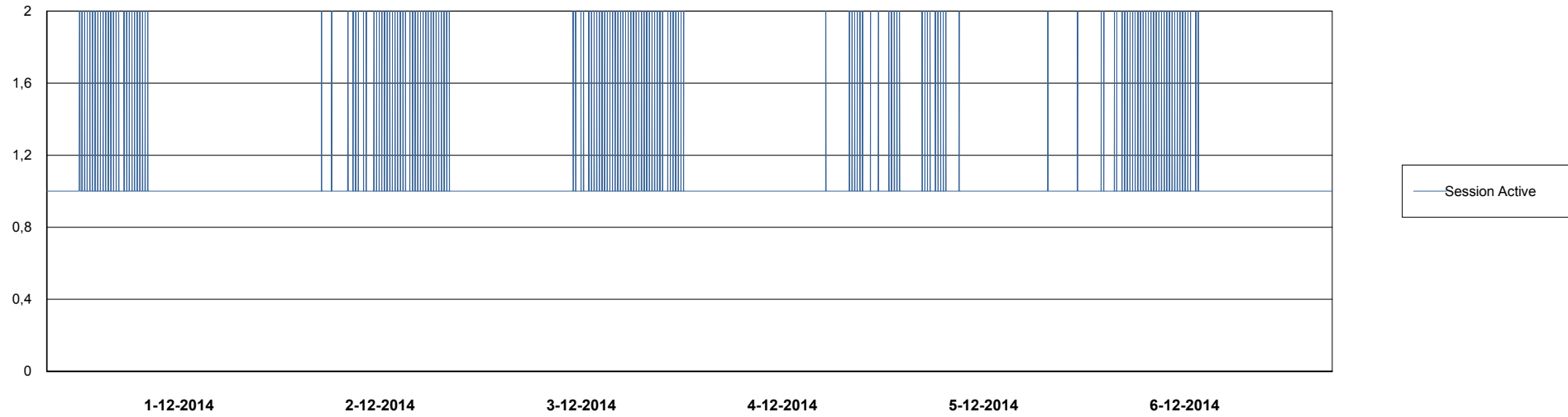
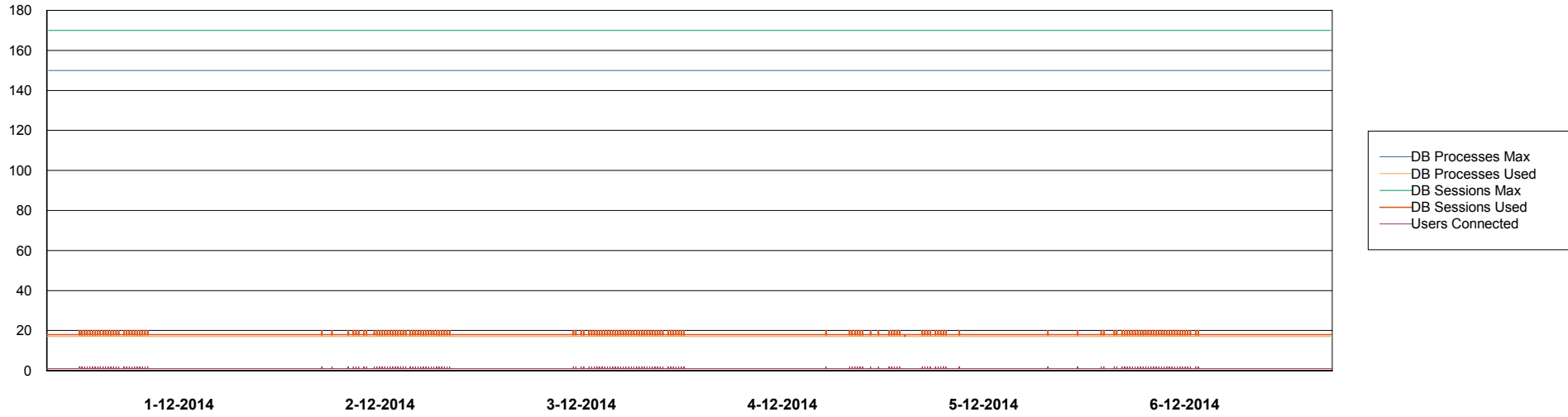


# Weekly SLA Customer Report

Customer NIX\_Production  
Database ID 51



## DATABASE PERFORMANCE NIXDB\_Standby





# Weekly SLA Customer Report

Customer NIX\_Production  
 Database ID 51



=====  
 DATABASE TABLESPACES NIXDB\_BI  
 =====

TOTAL DATABASE SIZE PER TABLESPACE

Date	Tablespace Name	Filesize (Gb)	Usedsize (Gb)	Percentage free
6-12-2014	ABSDATA	22	18	18
	INDX	40	29	28
5-12-2014	ABSDATA	22	18	18
	INDX	40	29	28
4-12-2014	ABSDATA	22	18	18
	INDX	40	29	28
3-12-2014	ABSDATA	22	18	18
	INDX	40	29	28
2-12-2014	ABSDATA	22	18	18
	INDX	40	29	28
1-12-2014	ABSDATA	22	18	18
	INDX	40	29	28
30-11-2014	ABSDATA	22	18	18
	INDX	40	29	28

# Weekly SLA Customer Report

Customer NIX\_Production  
 Database ID 51



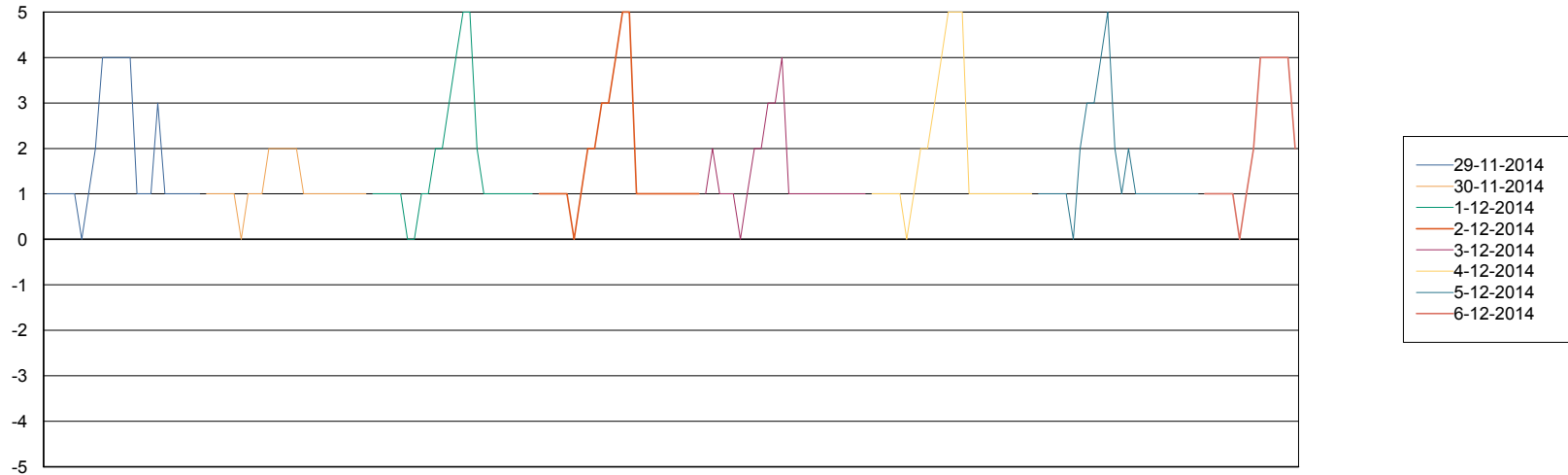
=====  
 DATABASE TABLESPACES NIXDB\_Production  
 =====

TOTAL DATABASE SIZE PER TABLESPACE

Date	Tablespace Name	Filesize (Gb)	Usedsize (Gb)	Percentage free
6-12-2014	ABSDATA	40	29	28
	INDX	97	80	18
5-12-2014	ABSDATA	40	29	28
	INDX	97	80	18
4-12-2014	ABSDATA	40	29	28
	INDX	97	81	16
3-12-2014	ABSDATA	40	29	28
	INDX	97	80	18
2-12-2014	ABSDATA	40	29	28
	INDX	97	80	18
1-12-2014	ABSDATA	40	29	28
	INDX	97	80	18
30-11-2014	ABSDATA	40	29	28
	INDX	97	80	18

=====  
 STANDBY DATABASE HEALTH NIX\_Production  
 =====

Recovery lag for last 7 days



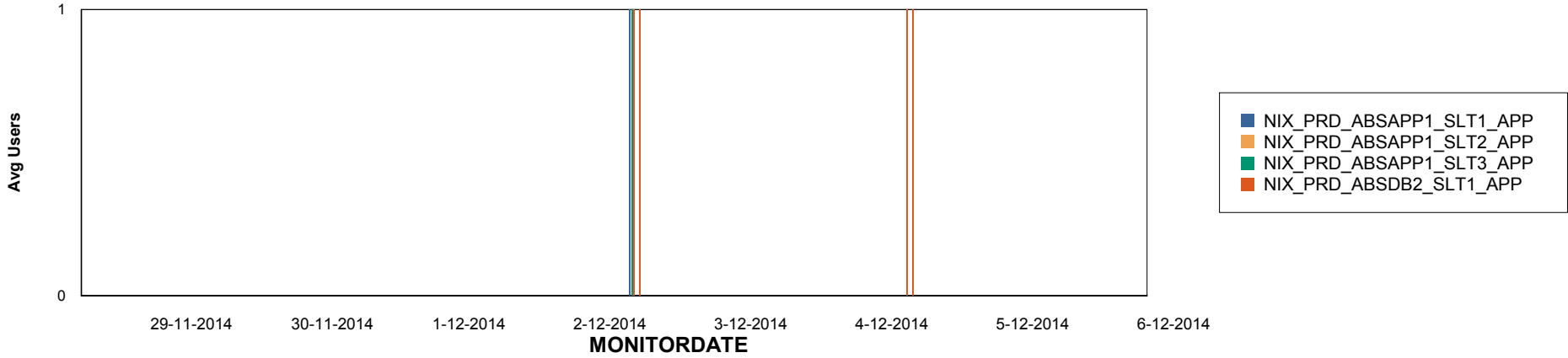
# Weekly SLA Customer Report

Customer NIX\_Production  
Database ID 51

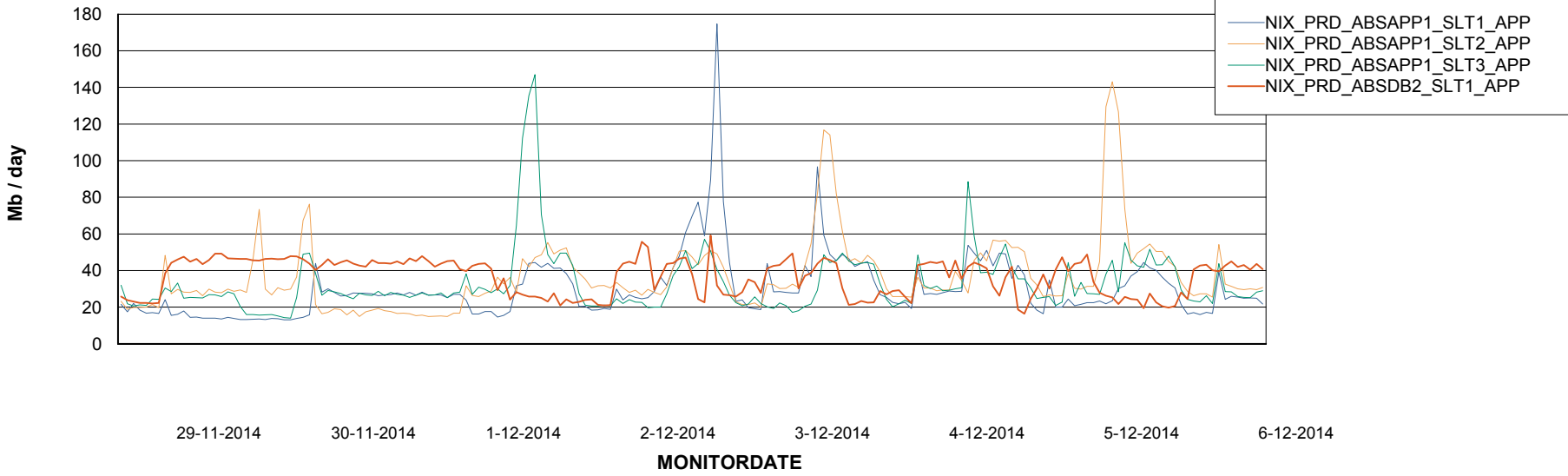


=====  
ABSolute Application Server Services  
=====

## Disaster per ABS Server



## Avg memory used per ABS Server Service



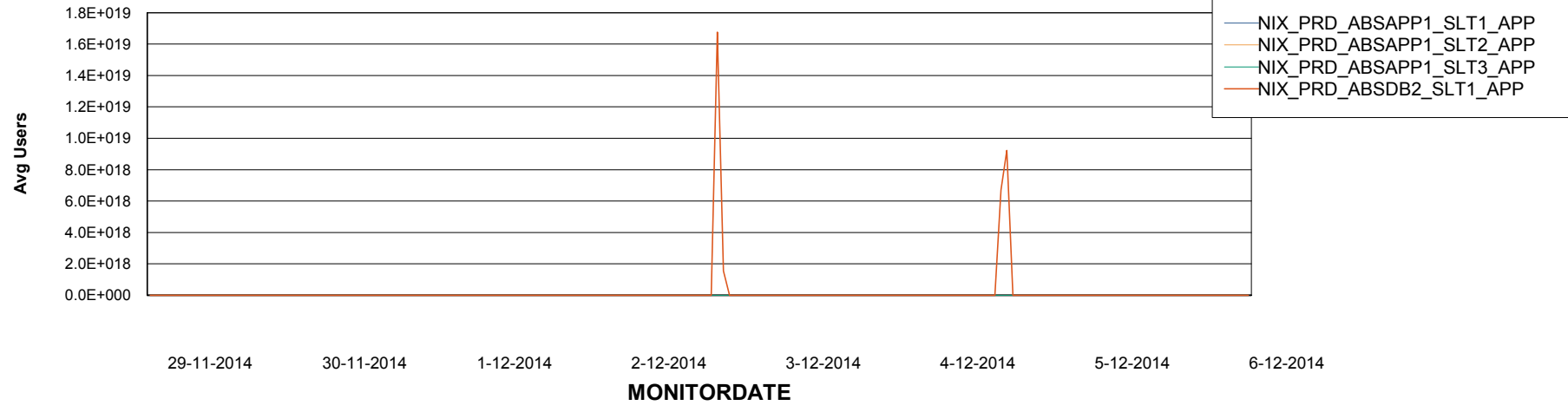
# Weekly SLA Customer Report

Customer NIX\_Production  
Database ID 51



=====  
ABSSolute Application Server Services  
=====

### Avg users per day per ABS server



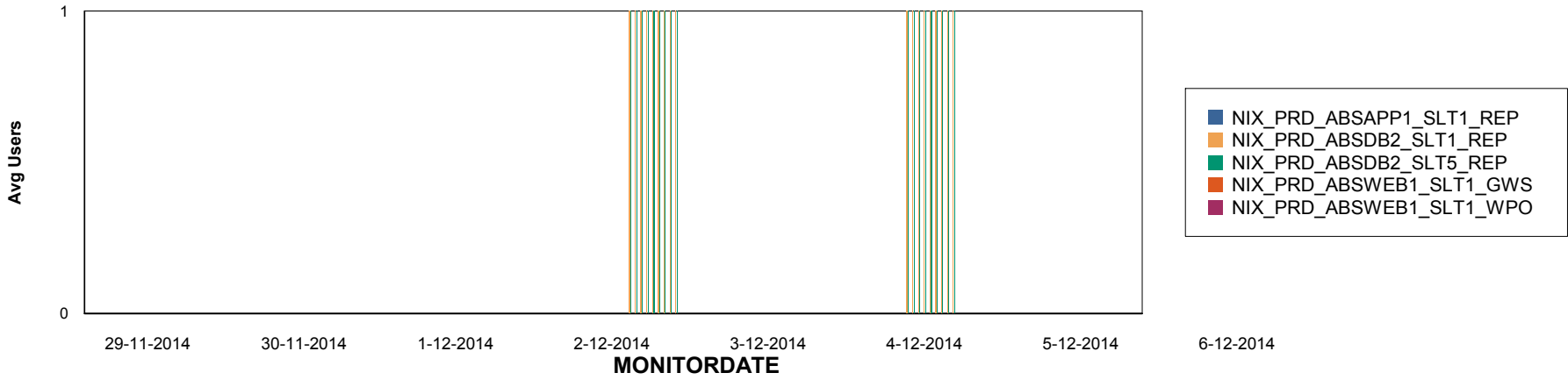
# Weekly SLA Customer Report

Customer NIX\_Production  
Database ID 51

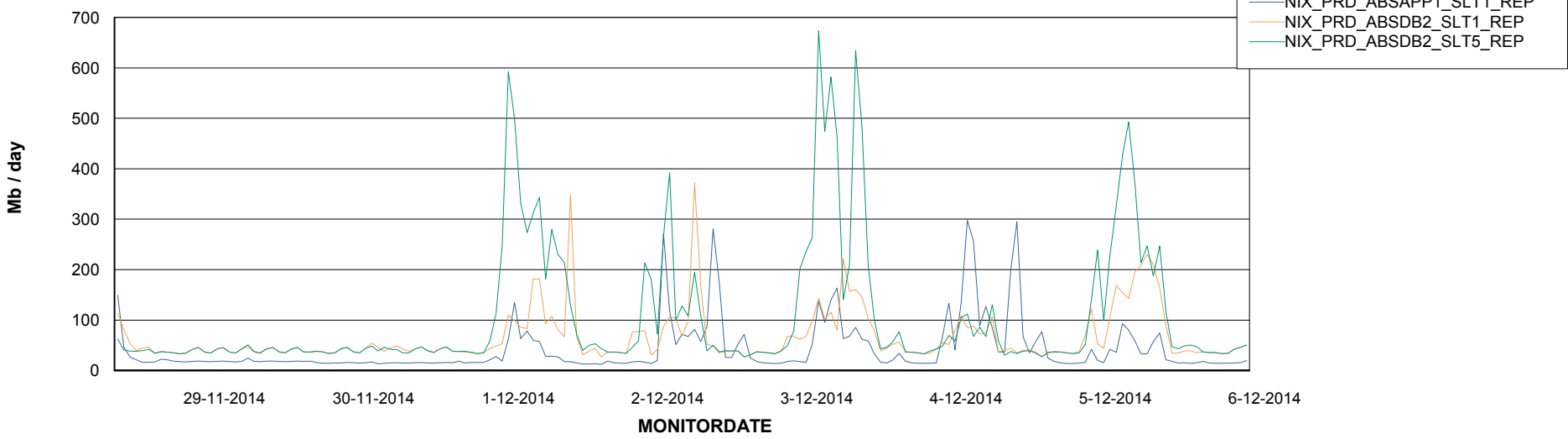


=====  
ABSolute Application ReportServer Services  
=====

## Disaster per ReportServer



## Avg memory used per ReportServer Service



# Weekly SLA Customer Report

Customer NIX\_Production  
Database ID 51



### Disaster per ABS component

