

# Weekly SLA Customer Report

Customer AUJ\_Production  
 Database ID 41



=====  
 HARDDISK USAGE AUJ\_PRD\_ORACLE\_BI1  
 =====

	Used disk space on \$1 (GB)	Total disk space on \$1 (GB)	Free disk space on \$1 (GB)
6-12-2014	424	526	75
5-12-2014	417	526	82
4-12-2014	440	526	59
3-12-2014	448	526	51
2-12-2014	446	526	53
1-12-2014	445	526	56

=====  
 HARDDISK USAGE AUJ\_PRD\_ORACLE1  
 =====

	Used disk space on \$1 (GB)	Total disk space on \$1 (GB)	Free disk space on \$1 (GB)
6-12-2014	129	290	67
5-12-2014	129	290	67
4-12-2014	129	290	67
3-12-2014	129	290	67
2-12-2014	129	290	67
1-12-2014	129	290	67
30-11-2014	128	290	67

=====  
 HARDDISK USAGE AUJ\_PRD\_ORACLE2  
 =====

## Weekly SLA Customer Report

Customer AUJ\_Production  
Database ID 41



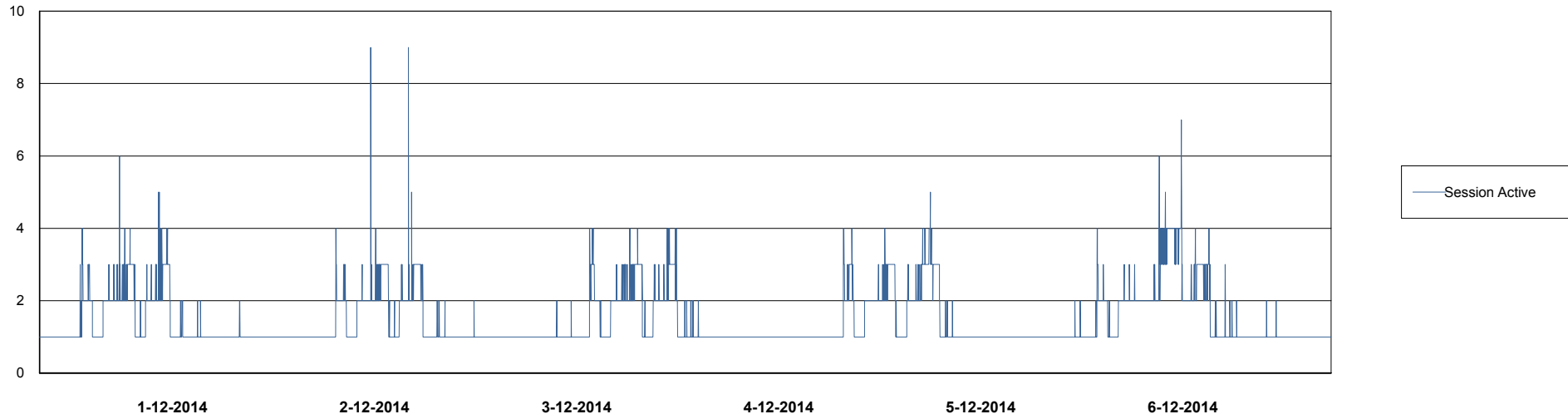
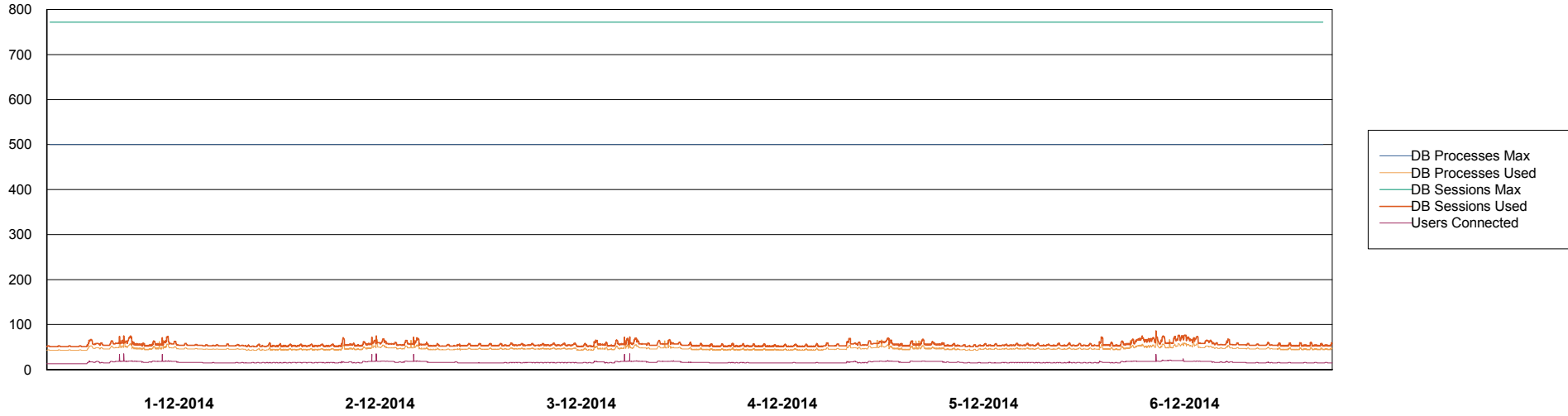
	Used disk space on \$1 (GB)	Total disk space on \$1 (GB)	Free disk space on \$1 (GB)
6-12-2014	6	109	98
5-12-2014	6	109	98
4-12-2014	6	109	98
3-12-2014	6	109	98
2-12-2014	6	109	98
1-12-2014	6	109	98
30-11-2014	6	109	98

# Weekly SLA Customer Report

Customer AUJ\_Production  
Database ID 41



=====  
DATABASE PERFORMANCE      AUJDB\_BI      =====  
=====

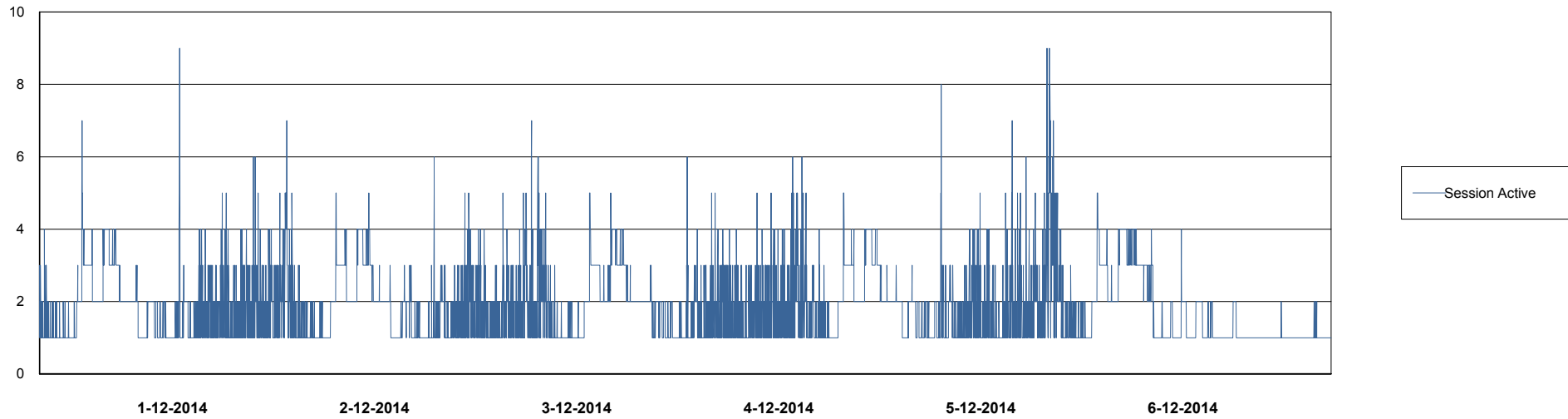
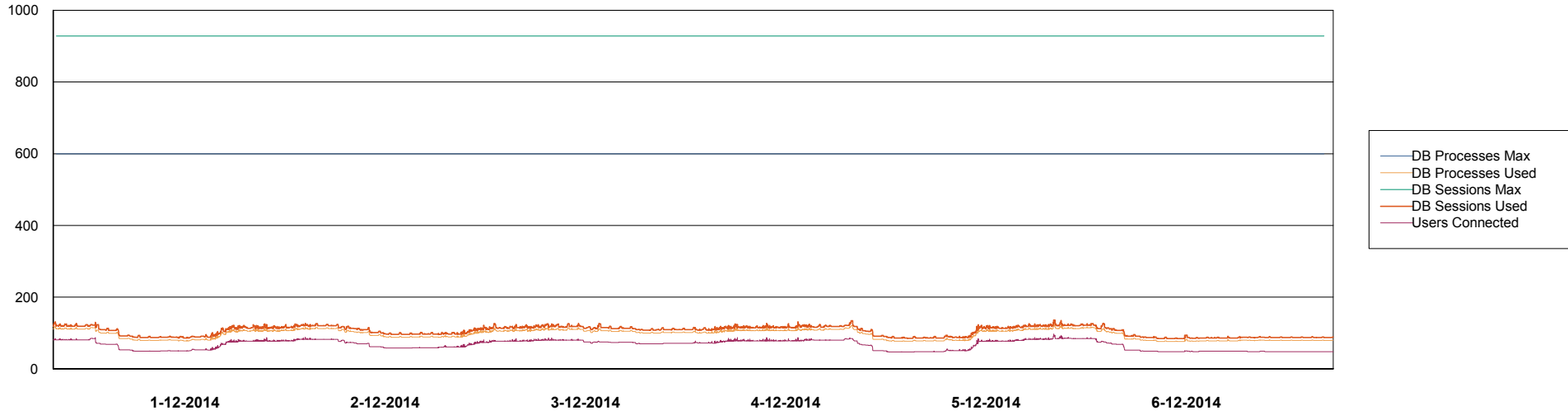


# Weekly SLA Customer Report

Customer AUJ\_Production  
Database ID 41



DATABASE PERFORMANCE AUJDB\_Production

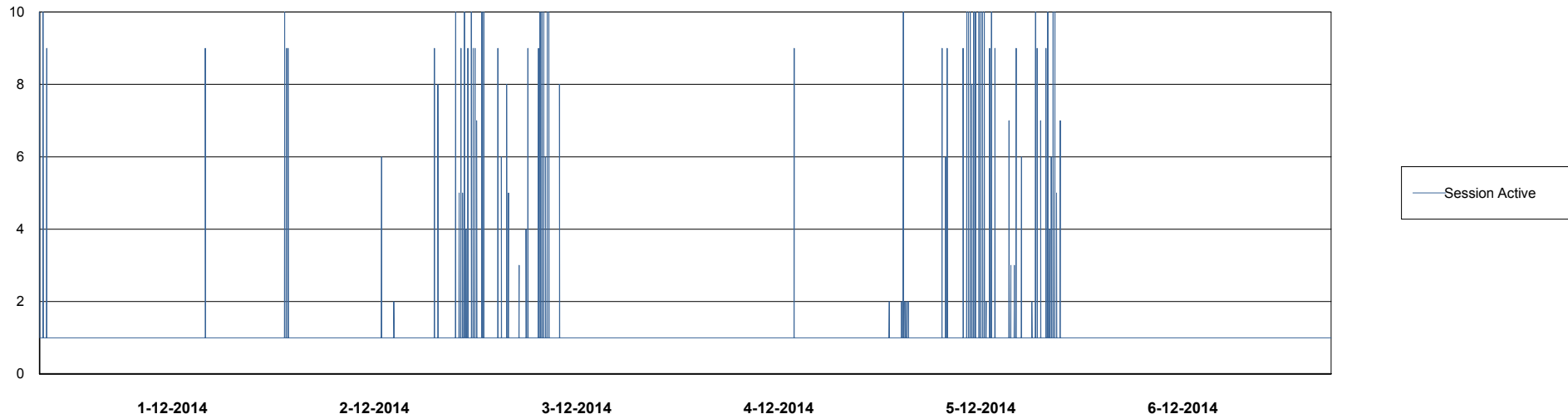
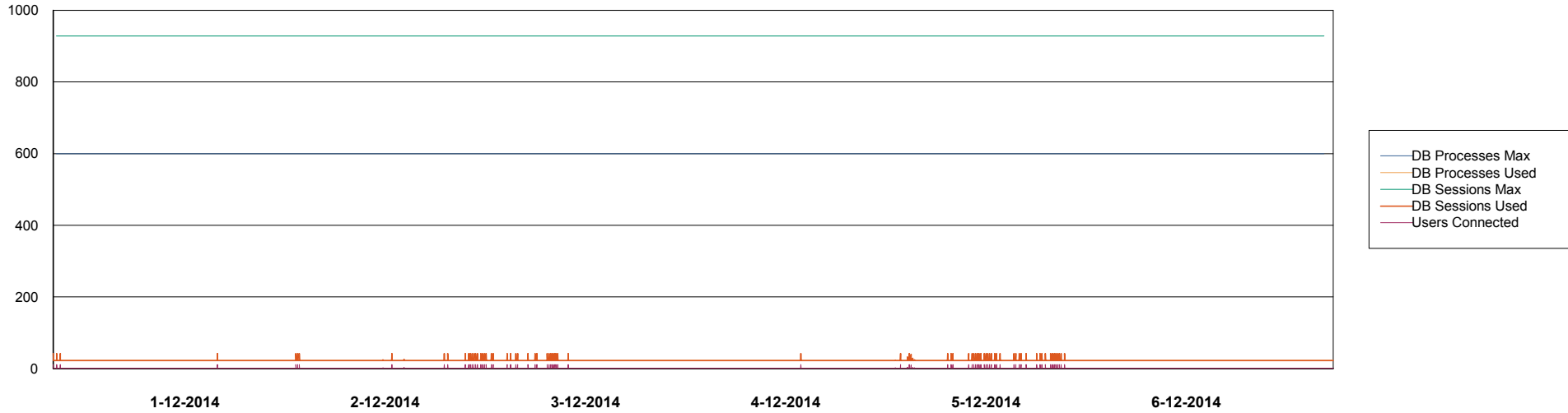


# Weekly SLA Customer Report

Customer AUJ\_Production  
Database ID 41



DATABASE PERFORMANCE AUJDB\_Standby

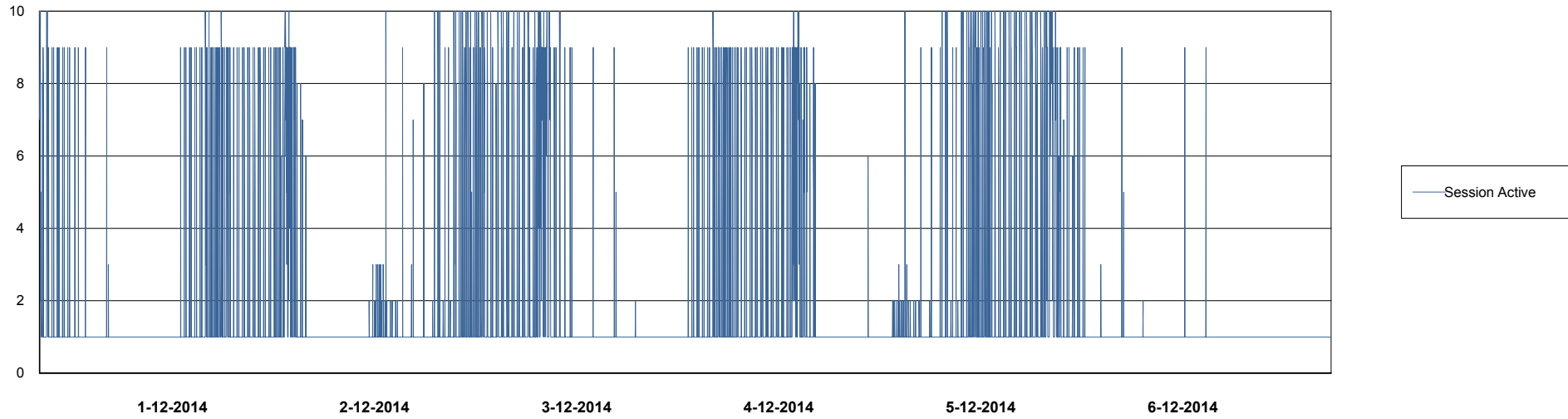
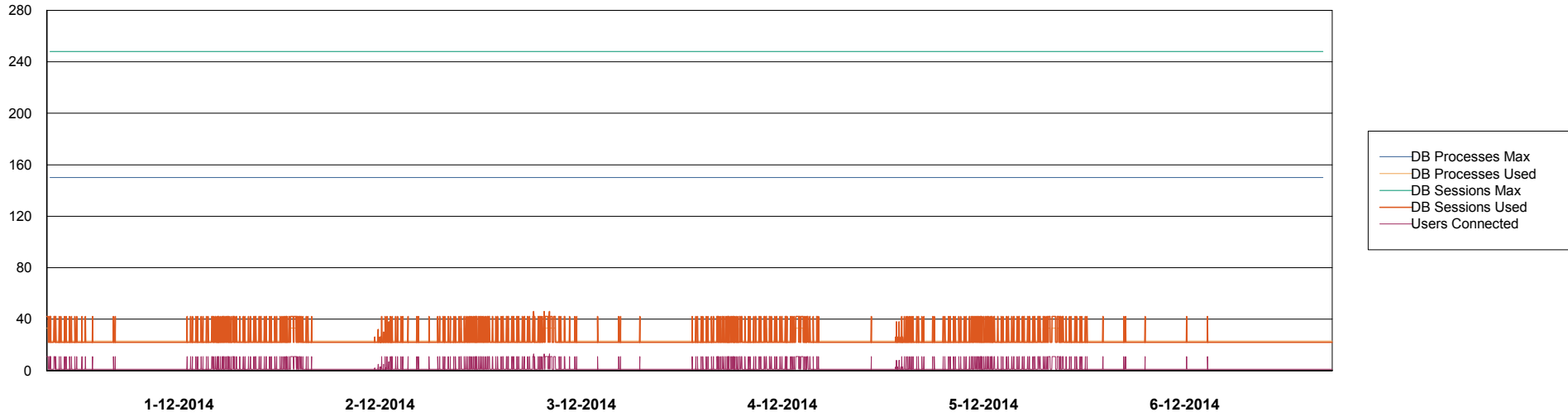


# Weekly SLA Customer Report

Customer AUJ\_Production  
Database ID 41



DATABASE PERFORMANCE AUJDB3\_Standby



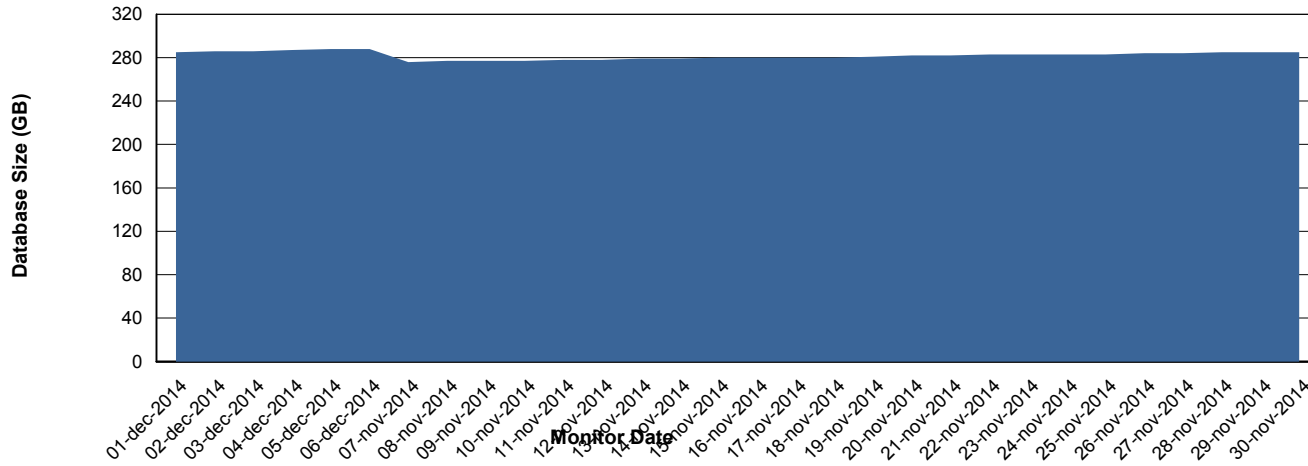
# Weekly SLA Customer Report

Customer AUJ\_Production  
Database ID 41



=====  
DATABASE SIZE AUJDB\_Production  
=====

## Database growth over last month



## Weekly SLA Customer Report

Customer AUJ\_Production  
Database ID 41



=====  
DATABASE TABLESPACES AUJDB\_BI  
=====

TOTAL DATABASE SIZE PER TABLESPACE

Date	Tablespace Name	Filesize (Gb)	Usedsize (Gb)	Percentage free
6-12-2014	ABSDATA	102	86	16
	INDX	171	146	15
5-12-2014	ABSDATA	102	86	16
	INDX	171	146	15
4-12-2014	ABSDATA	102	86	16
	INDX	171	146	15
3-12-2014	ABSDATA	102	86	16
	INDX	171	145	15
2-12-2014	ABSDATA	102	86	16
	INDX	171	145	15
1-12-2014	ABSDATA	102	86	16
	INDX	171	145	15
30-11-2014	ABSDATA	102	85	17
	INDX	171	145	15

# Weekly SLA Customer Report

Customer AUJ\_Production  
 Database ID 41



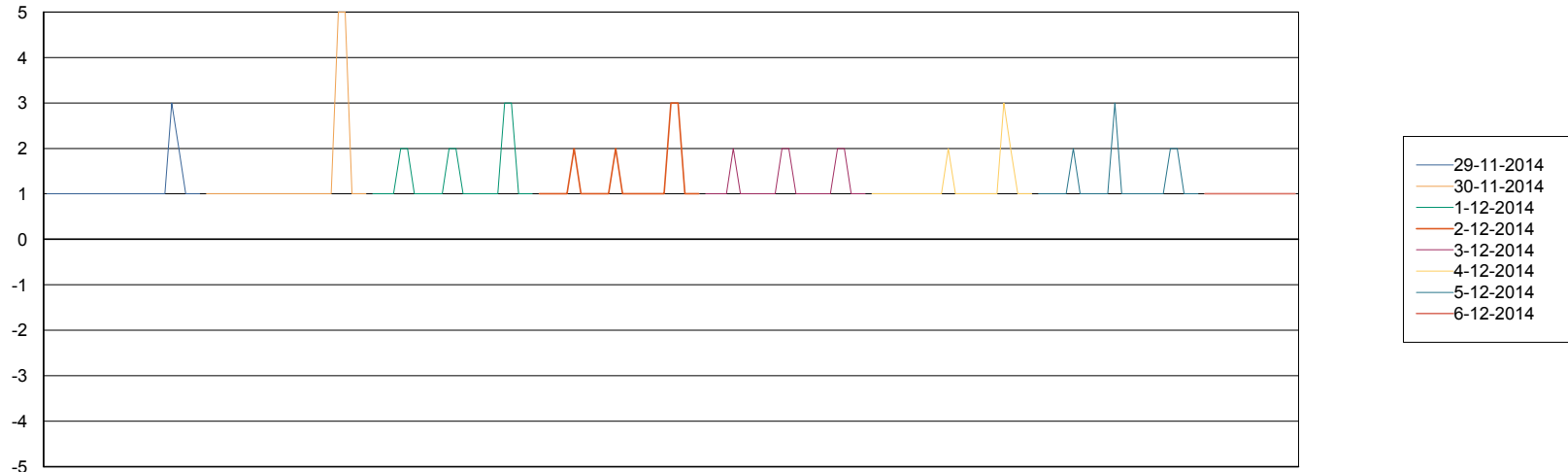
=====  
 DATABASE TABLESPACES AUJDB\_Production  
 =====

TOTAL DATABASE SIZE PER TABLESPACE

Date	Tablespace Name	Filesize (Gb)	Usedsize (Gb)	Percentage free
6-12-2014	ABSDATA	146	124	15
	INDX	189	162	14
5-12-2014	ABSDATA	146	124	15
	INDX	189	162	14
4-12-2014	ABSDATA	146	124	15
	INDX	189	162	14
3-12-2014	ABSDATA	146	124	15
	INDX	189	162	14
2-12-2014	ABSDATA	146	124	15
	INDX	189	161	15
1-12-2014	ABSDATA	146	123	16
	INDX	189	161	15
30-11-2014	ABSDATA	146	123	16
	INDX	189	160	15

=====  
 STANDBY DATABASE HEALTH AUJ\_Production  
 =====

Recovery lag for last 7 days



# Weekly SLA Customer Report

---

Customer AUJ\_Production  
Database ID 41

