

Weekly SLA Customer Report

Customer PCO Production
 Database ID 44



=====
 HARDDISK USAGE PCO_PRD_ORACLE1
 =====

	Total disk space on C (GB)	Free disk space on C (GB)	Total disk space on D (GB)	Free disk space on D (GB)
29-11-2014	279	184	838	148
28-11-2014	279	184	838	150
27-11-2014	279	184	838	151
26-11-2014	279	184	838	154
25-11-2014	279	184	838	157
24-11-2014	279	184	838	160
23-11-2014	279	184	838	162

=====
 HARDDISK USAGE PCO_PRD_ORACLE2
 =====

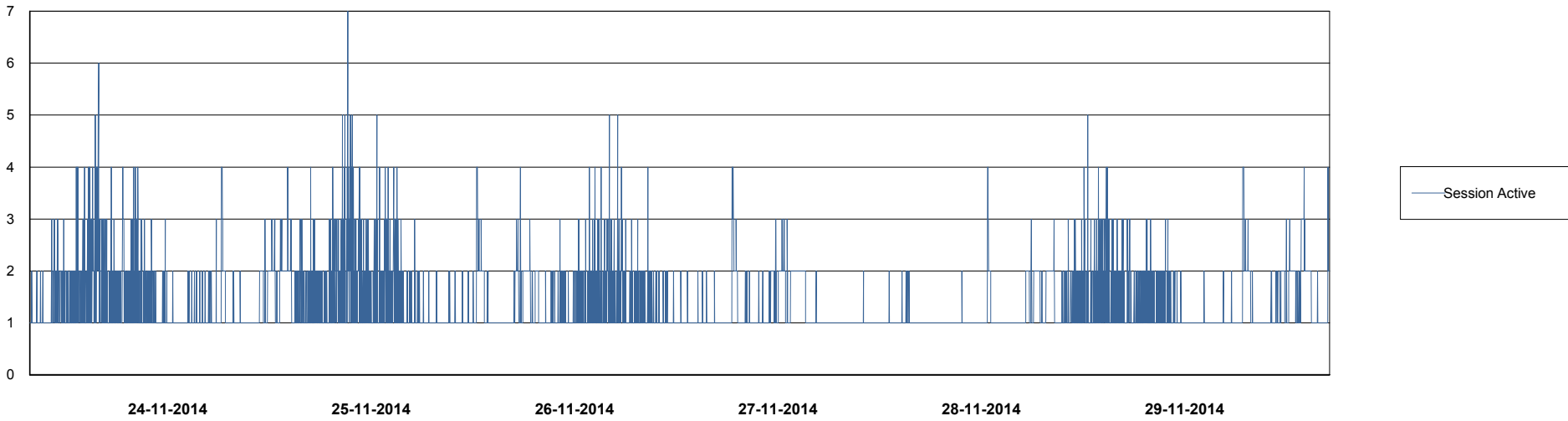
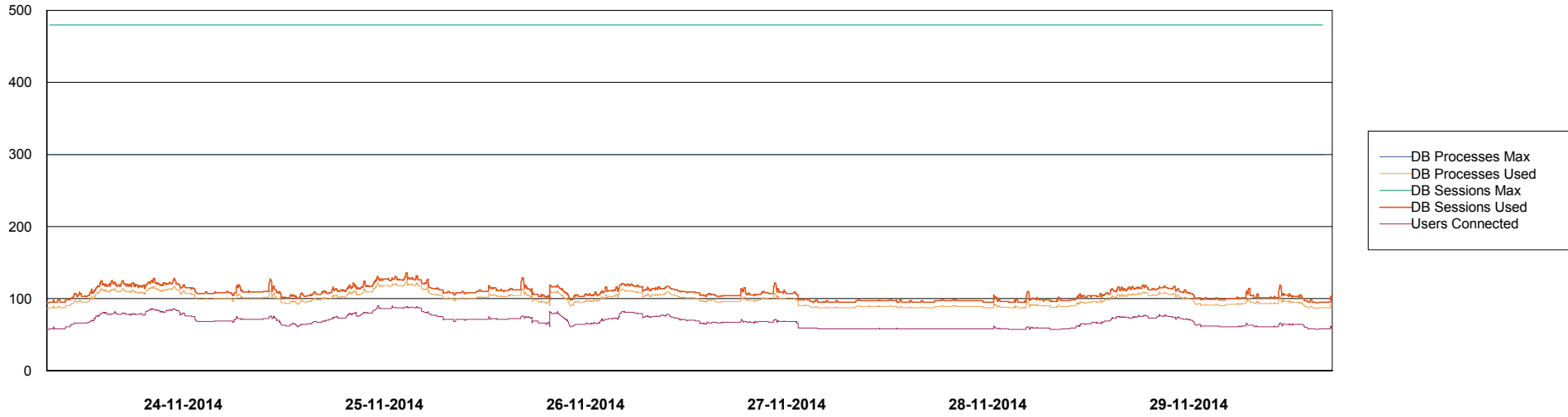
	Total disk space on C (GB)	Free disk space on C (GB)	Total disk space on D (GB)	Free disk space on D (GB)
29-11-2014	279	223	838	480
28-11-2014	279	223	838	482
27-11-2014	279	223	838	483
26-11-2014	279	223	838	486
25-11-2014	279	223	838	489
24-11-2014	279	223	838	492
23-11-2014	279	223	838	494

Weekly SLA Customer Report

Customer PCO Production
Database ID 44



DATABASE PERFORMANCE PCODB_Production

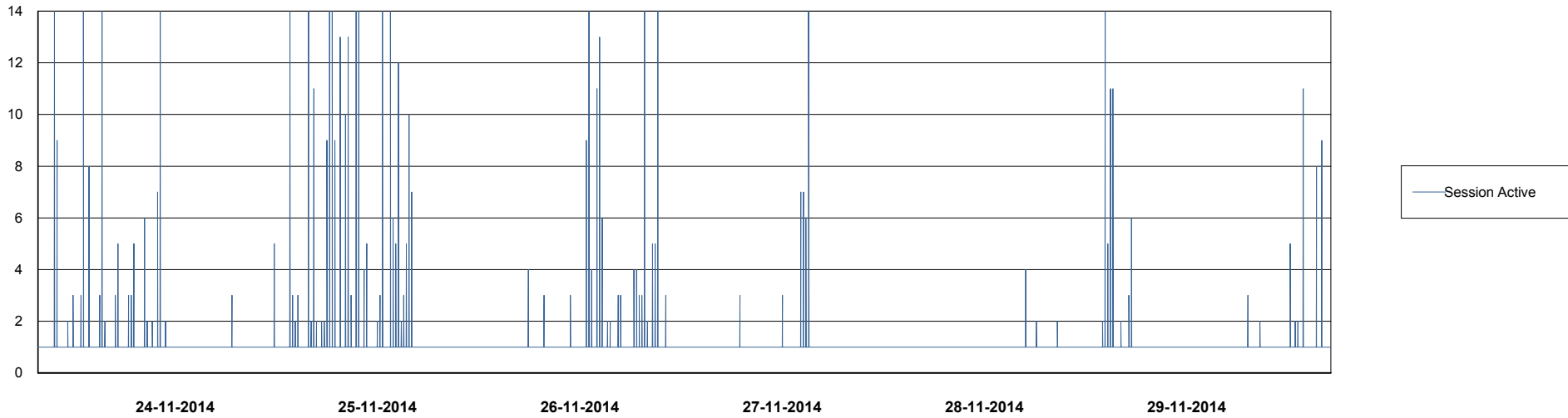
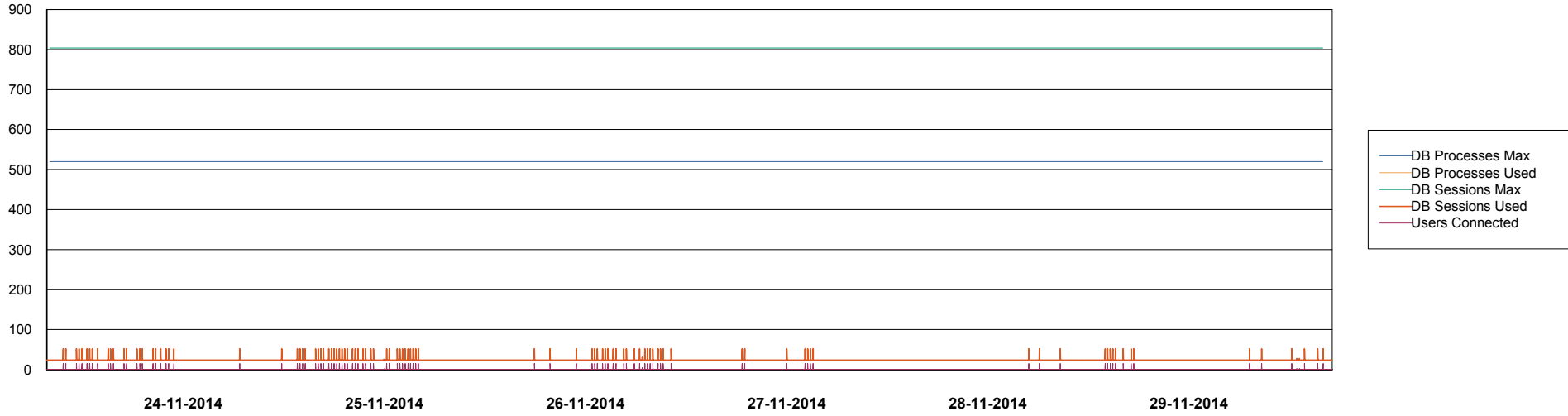


Weekly SLA Customer Report

Customer PCO Production
Database ID 44



DATABASE PERFORMANCE PCODB_Standby



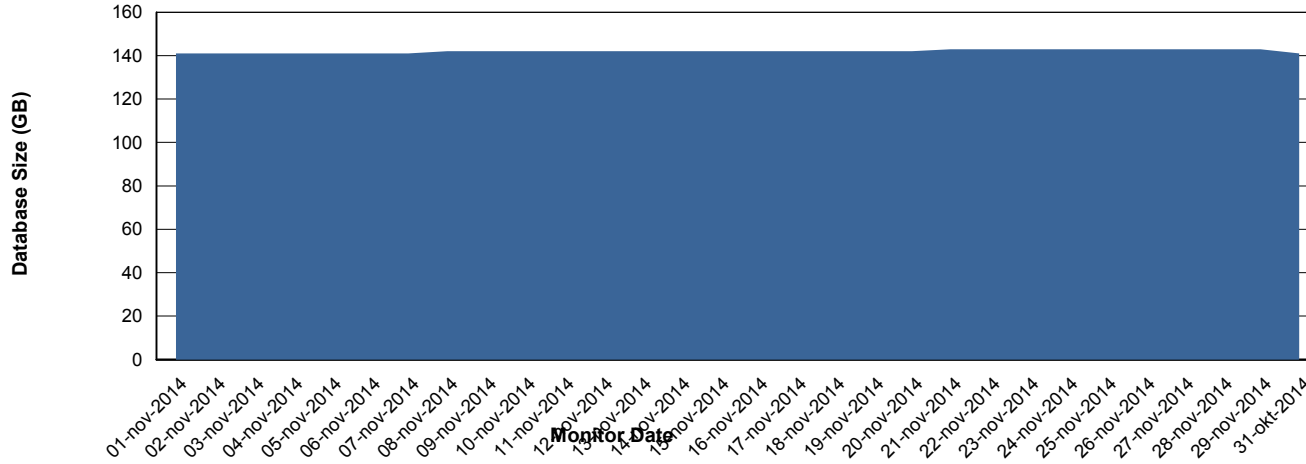
Weekly SLA Customer Report

Customer PCO Production
 Database ID 44



=====
 DATABASE SIZE PCODB_Production
 =====

Database growth over last month



=====
 DATABASE TABLESPACES PCODB_Production
 =====

TOTAL DATABASE SIZE PER TABLESPACE

Date	Tablespace Name	Filesize (Gb)	Usedsize (Gb)	Percentage free
29-11-2014	ABSDATA	72	59	18
	INDX	99	83	16
28-11-2014	ABSDATA	72	59	18
	INDX	99	83	16
27-11-2014	ABSDATA	72	59	18
	INDX	99	83	16
26-11-2014	ABSDATA	72	59	18
	INDX	99	83	16
25-11-2014	ABSDATA	72	59	18
	INDX	99	82	17
24-11-2014	ABSDATA	72	59	18
	INDX	99	82	17
23-11-2014	ABSDATA	72	59	18
	INDX	99	82	17

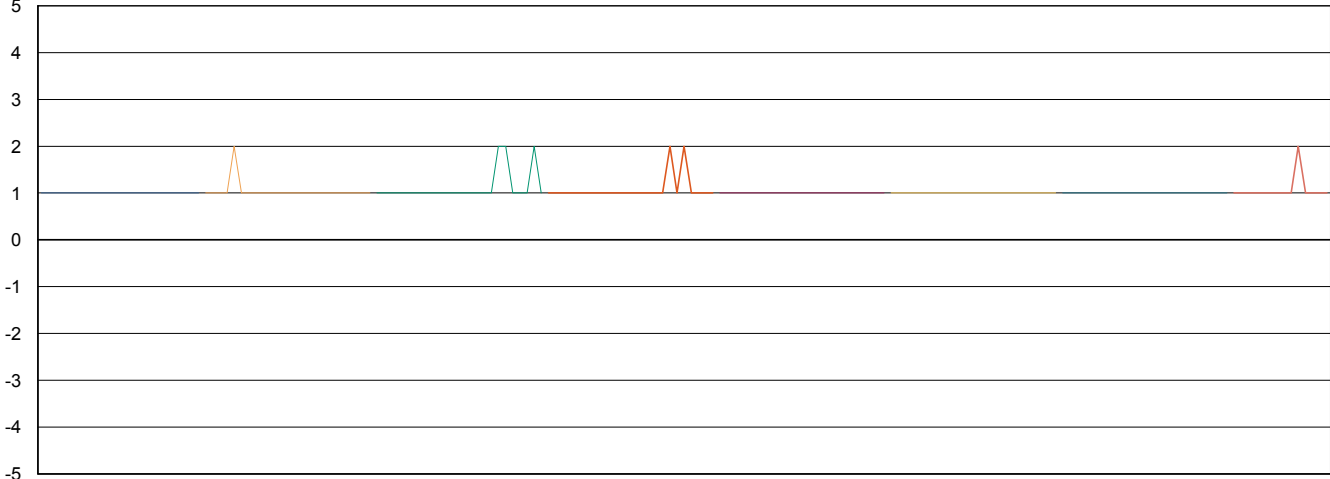
Weekly SLA Customer Report

Customer PCO Production
Database ID 44



=====
STANDBY DATABASE HEALTH PCO Production
=====

Recovery lag for last 7 days



- 22-11-2014
- 23-11-2014
- 24-11-2014
- 25-11-2014
- 26-11-2014
- 27-11-2014
- 28-11-2014
- 29-11-2014