

Weekly SLA Customer Report

Customer NIX_Production
Database ID 51



=====
HARDDISK USAGE NIX_PRD_ABSAPP1
=====

	Total disk space on C (GB)	Free disk space on C (GB)
29-11-2014	136	91
28-11-2014	136	91
27-11-2014	136	91
26-11-2014	136	91
25-11-2014	136	91
24-11-2014	136	91
23-11-2014	136	83

=====
HARDDISK USAGE NIX_PRD_ABSWEB1
=====

	Total disk space on C (GB)	Free disk space on C (GB)
29-11-2014	930	771
28-11-2014	930	771
27-11-2014	930	772
26-11-2014	930	772
25-11-2014	930	772
24-11-2014	930	772
23-11-2014	930	772

Weekly SLA Customer Report

Customer NIX_Production
 Database ID 51



=====
 HARDDISK USAGE NIX_PRD_ORACLE_B11
 =====

	Total disk space on C (GB)	Free disk space on C (GB)	Total disk space on D (GB)	Free disk space on D (GB)	Total disk space on E (GB)	Free disk space on E (GB)
29-11-2014	99	56	279	180	99	31
28-11-2014	99	56	279	180	99	31
27-11-2014	99	56	279	180	99	31
26-11-2014	55	22	279	180	200	128
25-11-2014	40	8	279	179	236	168
24-11-2014	40	8	279	179	236	168
23-11-2014	40	6	279	177	236	167

=====
 HARDDISK USAGE NIX_PRD_ORCDB1
 =====

	Total disk space on C (GB)	Free disk space on C (GB)	Total disk space on D (GB)	Free disk space on D (GB)	Total disk space on E (GB)	Free disk space on E (GB)
29-11-2014	136	68	136	39	136	51
28-11-2014	136	68	136	39	136	53
27-11-2014	136	68	136	39	136	52
26-11-2014	136	68	136	39	136	52
25-11-2014	136	68	136	39	136	52
24-11-2014	136	68	136	37	136	49
23-11-2014	136	68	136	36	136	50

Weekly SLA Customer Report

Customer NIX_Production
 Database ID 51



=====
 HARDDISK USAGE NIX_PRD_ORCDB2
 =====

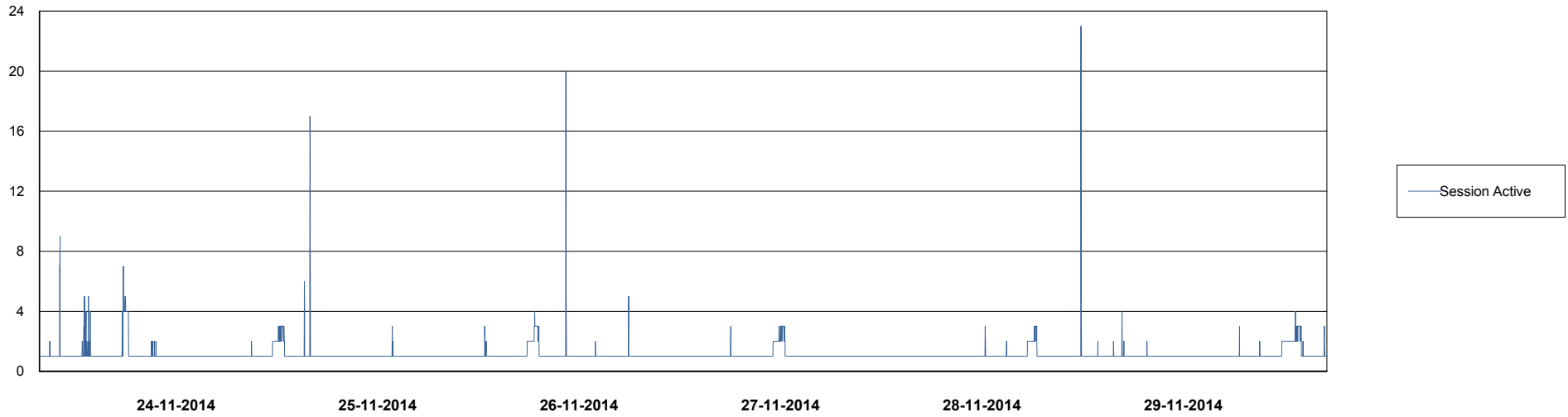
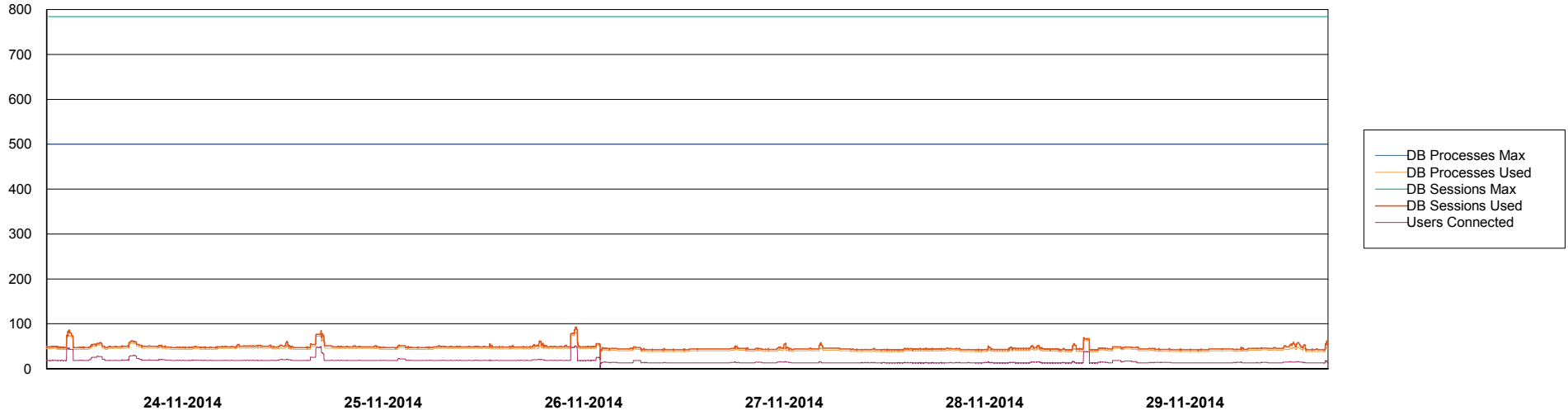
	Total disk space on C (GB)	Free disk space on C (GB)	Total disk space on D (GB)	Free disk space on D (GB)	Total disk space on E (GB)	Free disk space on E (GB)
29-11-2014	279	92	279	68	279	34
28-11-2014	279	92	279	68	279	59
27-11-2014	279	92	279	68	279	63
26-11-2014	279	92	279	68	279	45
25-11-2014	279	91	279	67	279	52
24-11-2014	279	92	279	67	279	34
23-11-2014	279	93	279	68	279	19

Weekly SLA Customer Report

Customer NIX_Production
Database ID 51



=====
DATABASE PERFORMANCE NIXDB_BI
=====



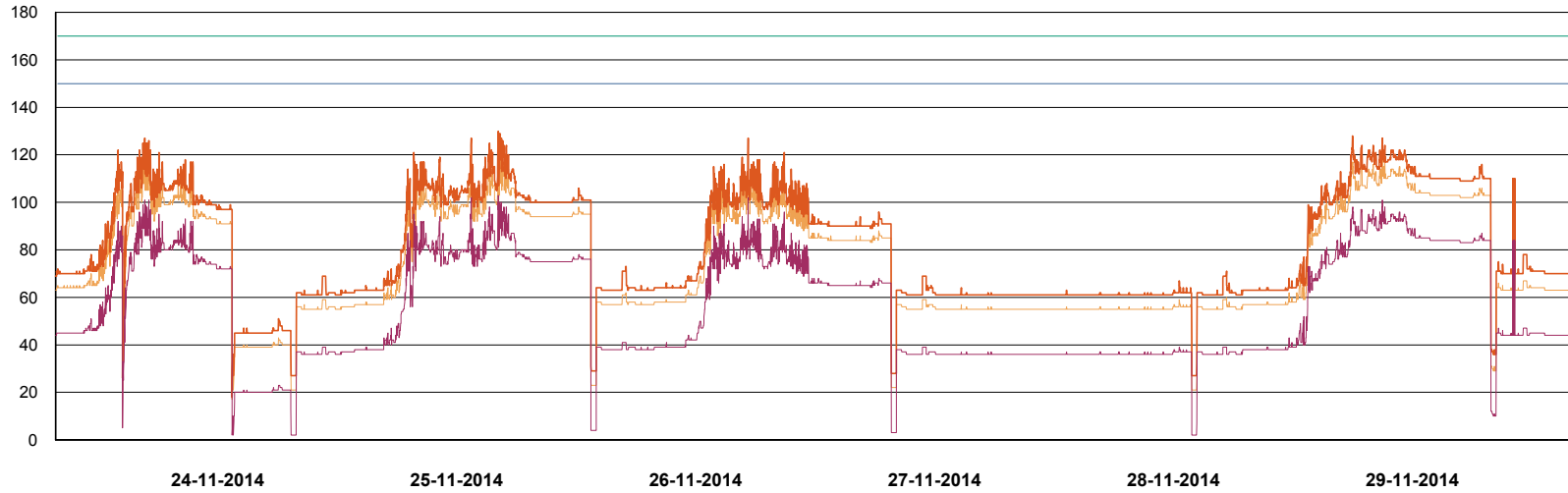
Weekly SLA Customer Report

Customer NIX_Production
Database ID 51

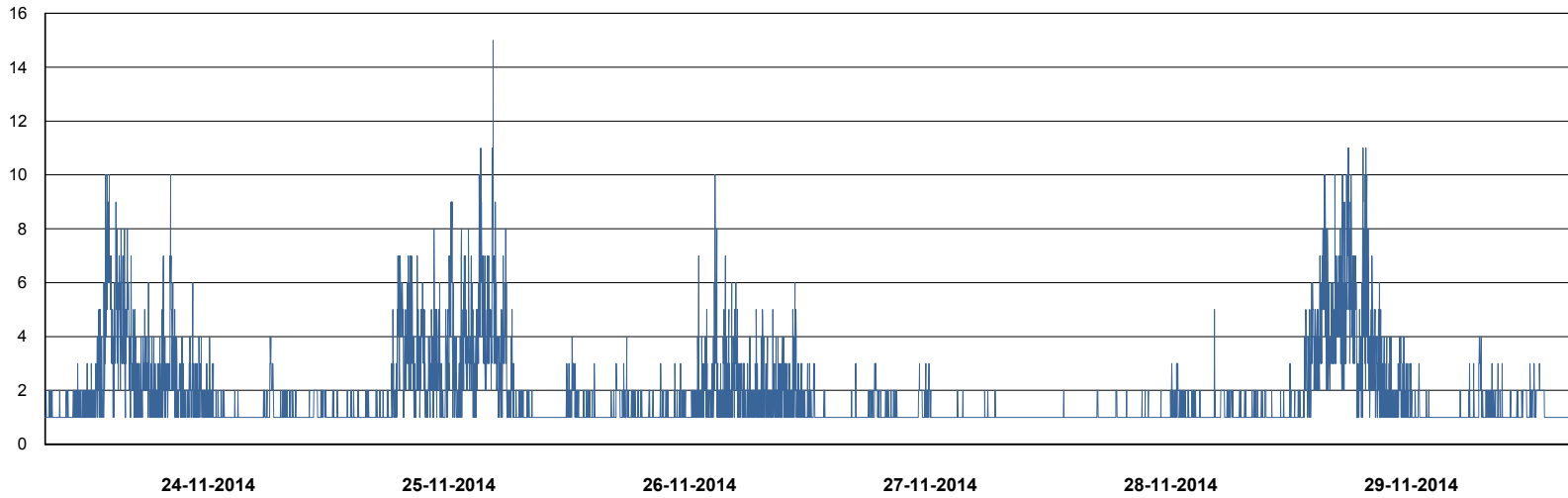


DATABASE PERFORMANCE

NIXDB_Production



- DB Processes Max
- DB Processes Used
- DB Sessions Max
- DB Sessions Used
- Users Connected



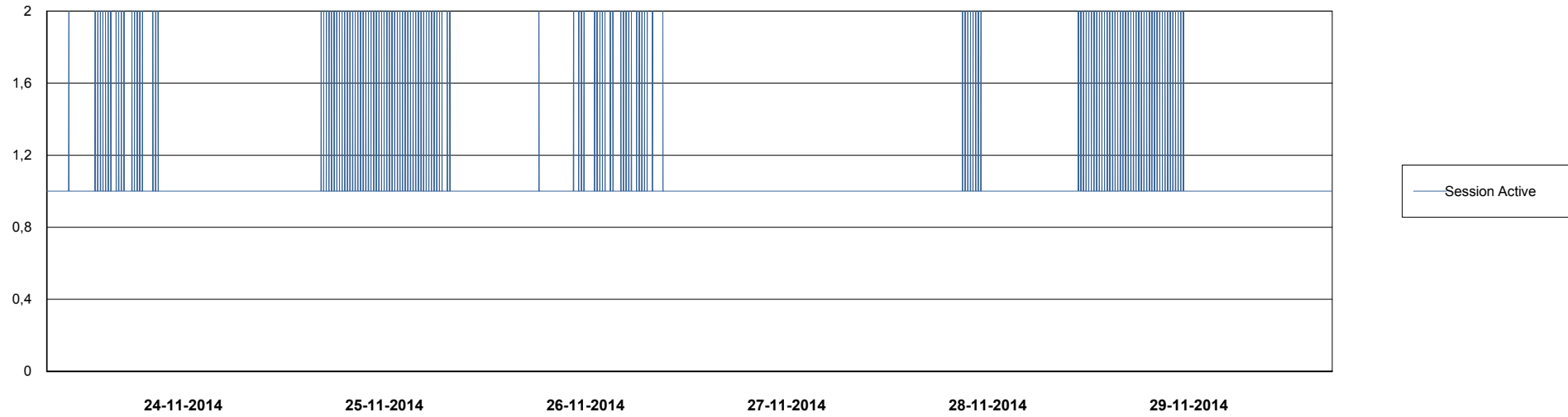
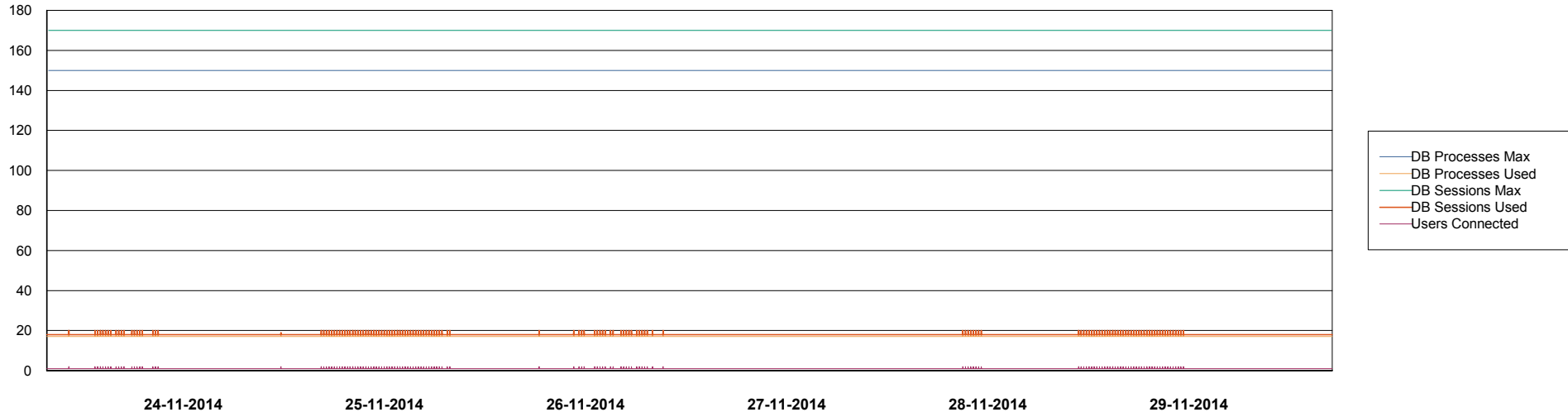
- Session Active

Weekly SLA Customer Report

Customer NIX_Production
Database ID 51



DATABASE PERFORMANCE NIXDB_Standby



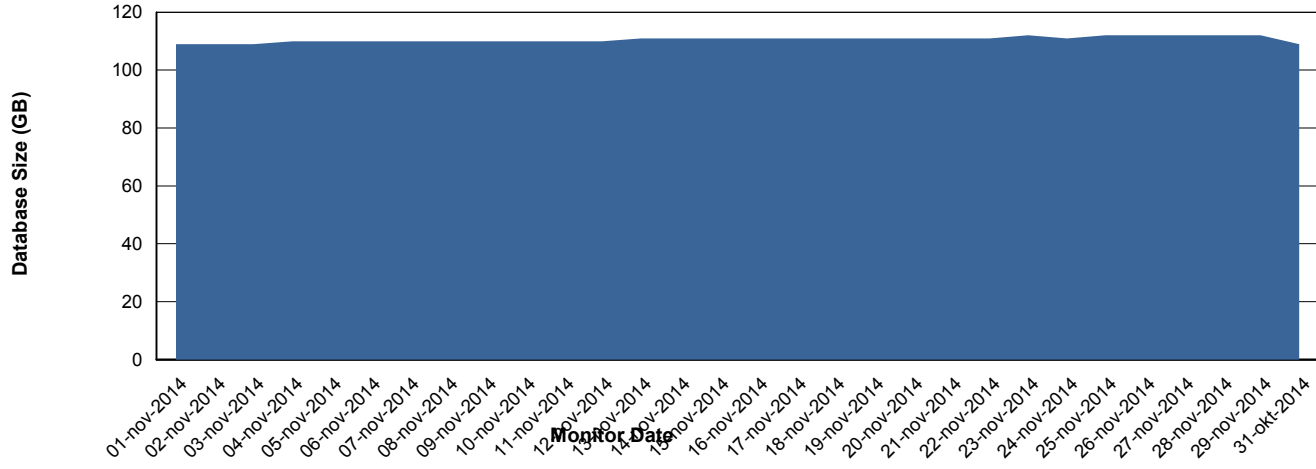
Weekly SLA Customer Report

Customer NIX_Production
Database ID 51



=====
DATABASE SIZE NIXDB_Production
=====

Database growth over last month



Weekly SLA Customer Report

Customer NIX_Production
Database ID 51



=====
DATABASE TABLESPACES NIXDB_BI
=====
TOTAL DATABASE SIZE PER TABLESPACE

Date	Tablespace Name	Filesize (Gb)	Usedsize (Gb)	Percentage free
29-11-2014	ABSDATA	22	18	18
	INDX	40	28	30
28-11-2014	ABSDATA	22	18	18
	INDX	40	28	30
27-11-2014	ABSDATA	22	18	18
	INDX	40	28	30
26-11-2014	ABSDATA	22	18	18
	INDX	40	28	30
25-11-2014	ABSDATA	22	18	18
	INDX	40	28	30
24-11-2014	ABSDATA	22	18	18
	INDX	40	28	30
23-11-2014	ABSDATA	22	18	18
	INDX	40	28	30

Weekly SLA Customer Report

Customer NIX_Production
 Database ID 51



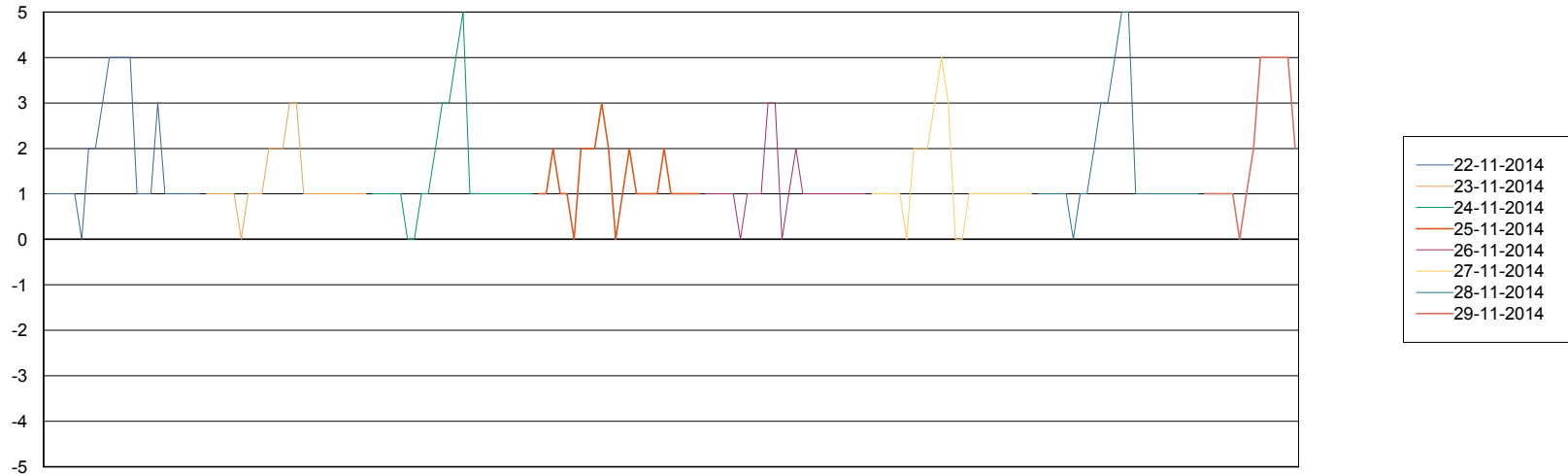
=====
 DATABASE TABLESPACES NIXDB_Production
 =====

TOTAL DATABASE SIZE PER TABLESPACE

Date	Tablespace Name	Filesize (Gb)	Usedsize (Gb)	Percentage free
29-11-2014	ABSDATA	40	29	28
	INDX	97	80	18
28-11-2014	ABSDATA	40	29	28
	INDX	97	80	18
27-11-2014	ABSDATA	40	29	28
	INDX	97	80	18
26-11-2014	ABSDATA	40	29	28
	INDX	97	80	18
25-11-2014	ABSDATA	40	29	28
	INDX	97	80	18
24-11-2014	ABSDATA	40	29	28
	INDX	97	80	18
23-11-2014	ABSDATA	40	29	28
	INDX	97	80	18

=====
 STANDBY DATABASE HEALTH NIX_Production
 =====

Recovery lag for last 7 days



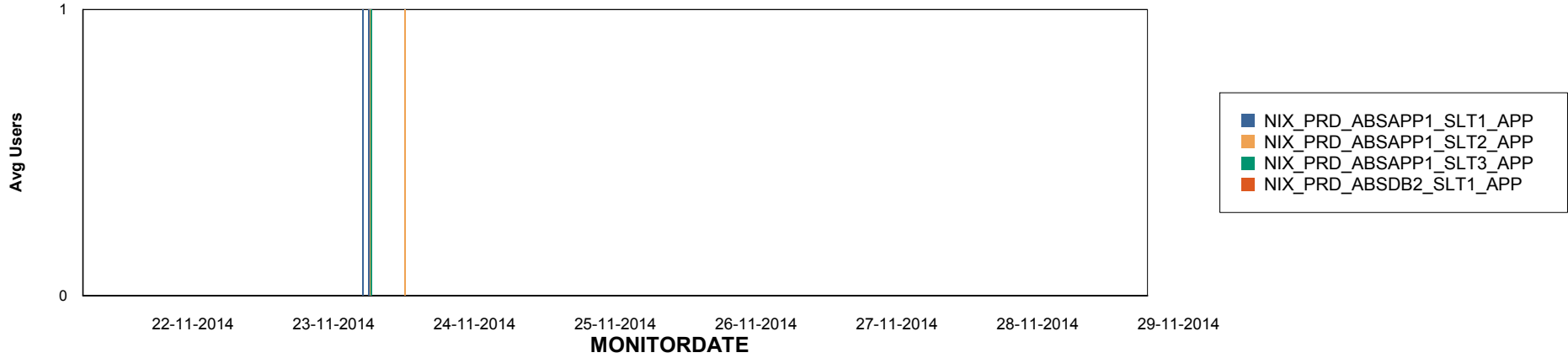
Weekly SLA Customer Report

Customer NIX_Production
Database ID 51

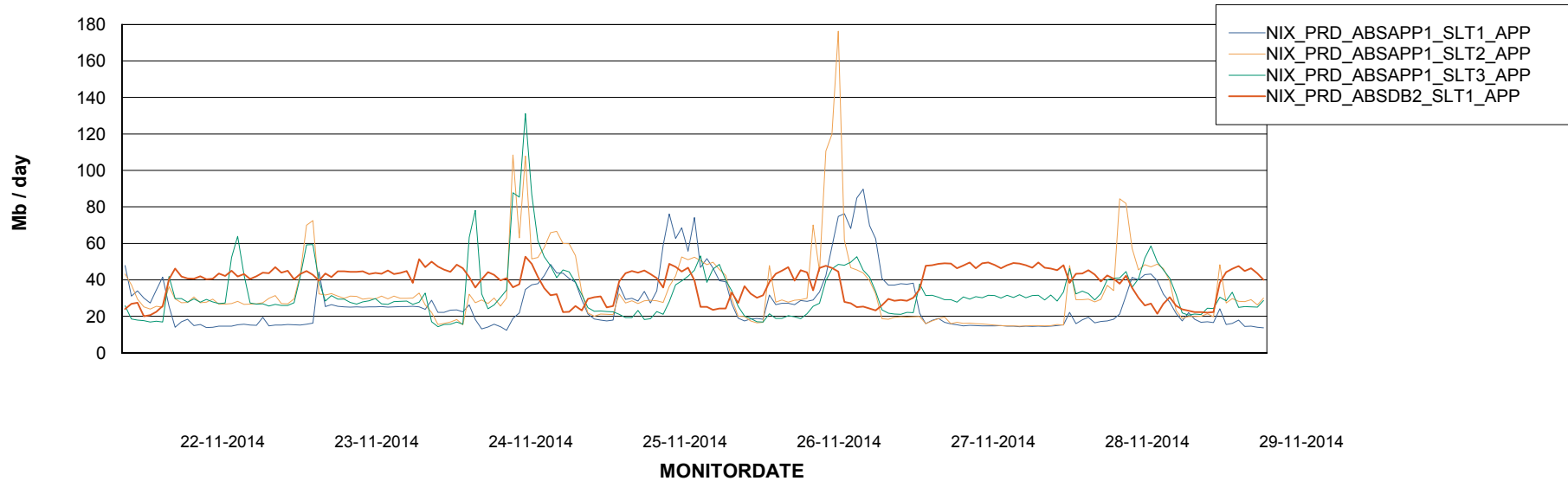


ABSolute Application Server Services

Disaster per ABS Server



Avg memory used per ABS Server Service



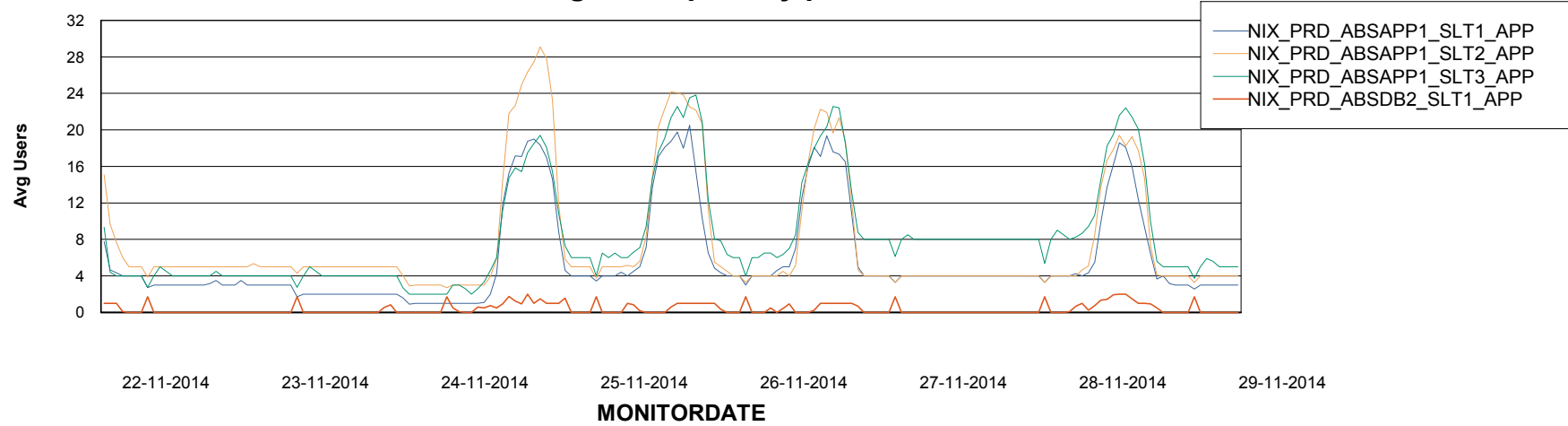
Weekly SLA Customer Report

Customer NIX_Production
Database ID 51



=====
ABSolute Application Server Services
=====

Avg users per day per ABS server



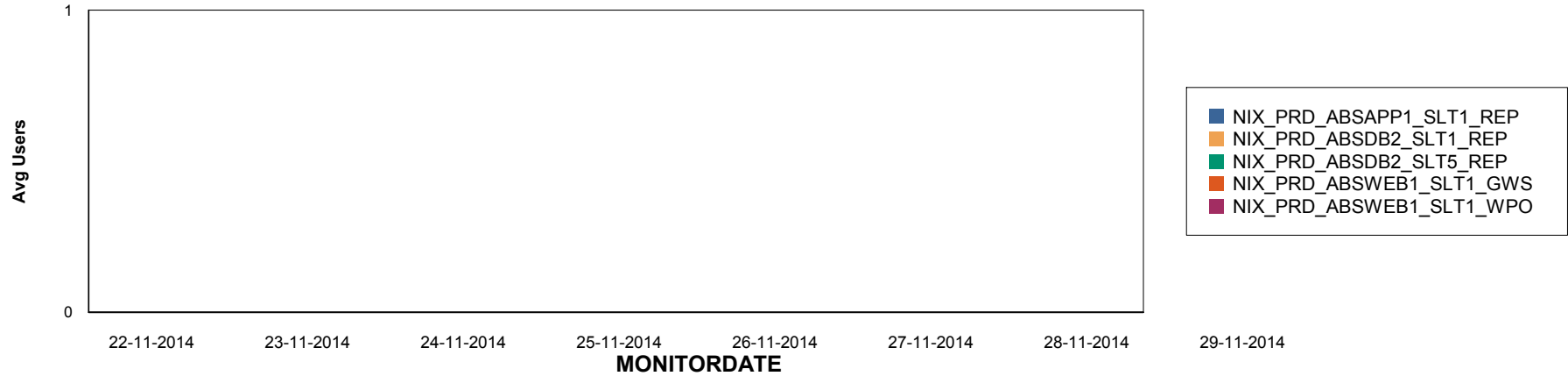
Weekly SLA Customer Report

Customer NIX_Production
Database ID 51

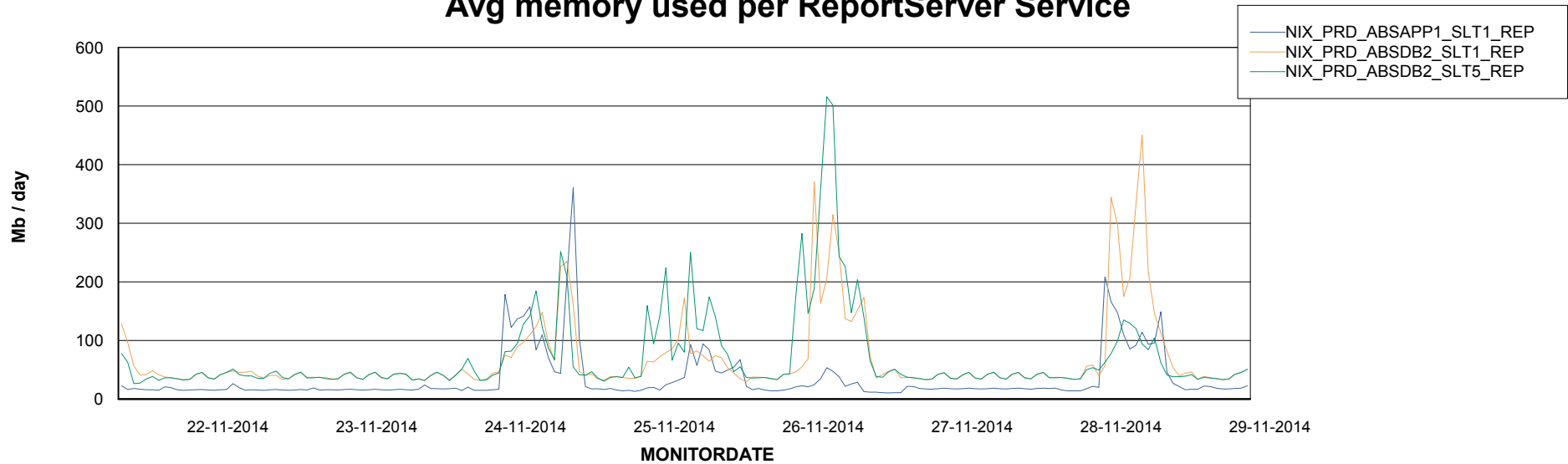


=====
ABSolute Application ReportServer Services
=====

Disaster per ReportServer



Avg memory used per ReportServer Service



Weekly SLA Customer Report

Customer NIX_Production
Database ID 51



Disaster per ABS component

