

Weekly SLA Customer Report

Customer VEN_Production
 Database ID 35



=====
 HARDDISK USAGE VEN_PRD_ORACLE1
 =====

	Free disk space on C (GB)	Free disk space on D (GB)	Free disk space on E (GB)
22-11-2014	182	115	123
21-11-2014	183	115	124
20-11-2014	184	115	124
19-11-2014	184	115	124
18-11-2014	185	115	124
17-11-2014	185	115	124
16-11-2014	185	115	123

=====
 HARDDISK USAGE VEN_PRD_ORACLE2
 =====

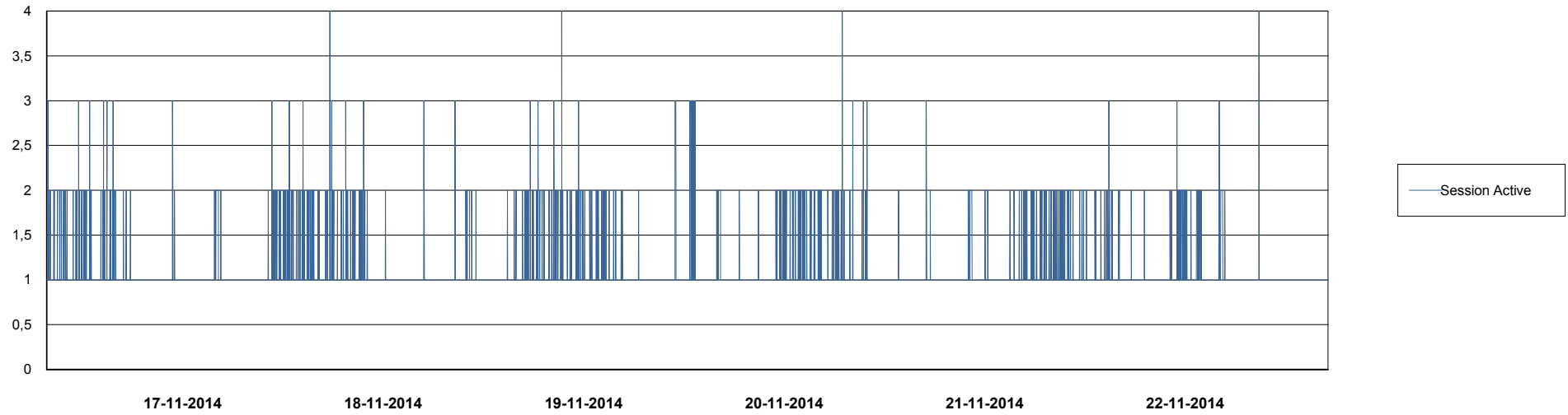
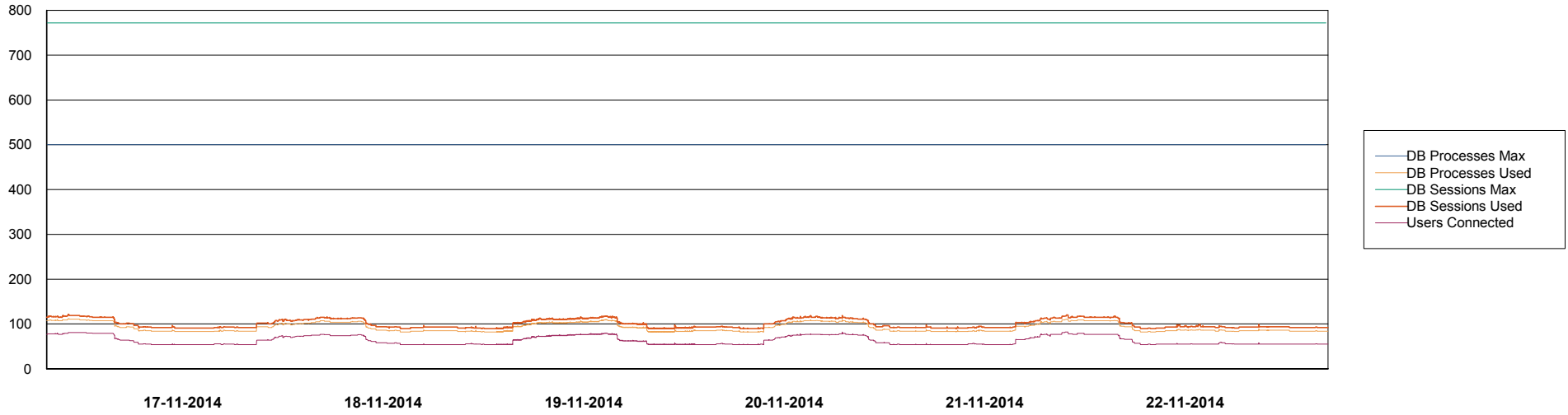
	Free disk space on C (GB)	Free disk space on D (GB)	Free disk space on E (GB)
22-11-2014	322	306	130
21-11-2014	323	306	131
20-11-2014	324	306	131
19-11-2014	325	306	131
18-11-2014	326	306	132
17-11-2014	327	306	132
16-11-2014	327	306	131

Weekly SLA Customer Report

Customer VEN_Production
Database ID 35



DATABASE PERFORMANCE VENDB_Production

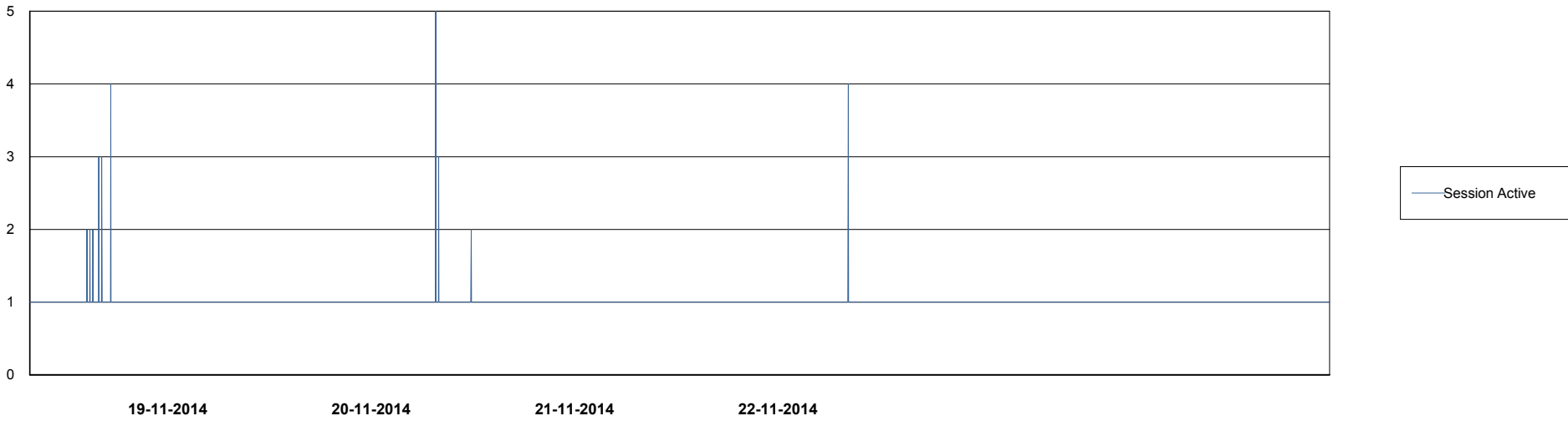
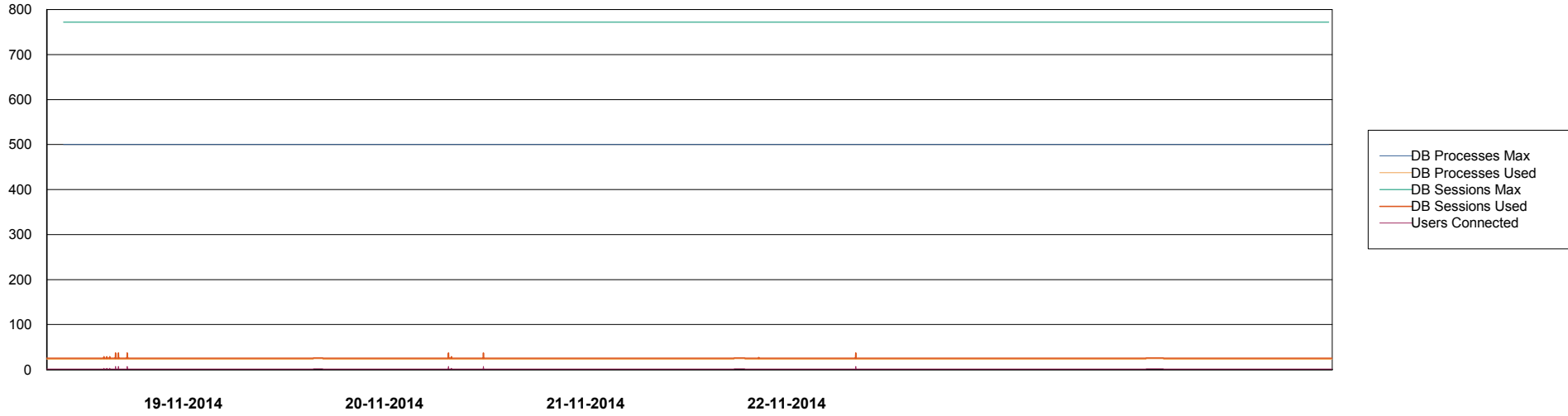


Weekly SLA Customer Report

Customer VEN_Production
Database ID 35



DATABASE PERFORMANCE ----- VENDB_Standby -----



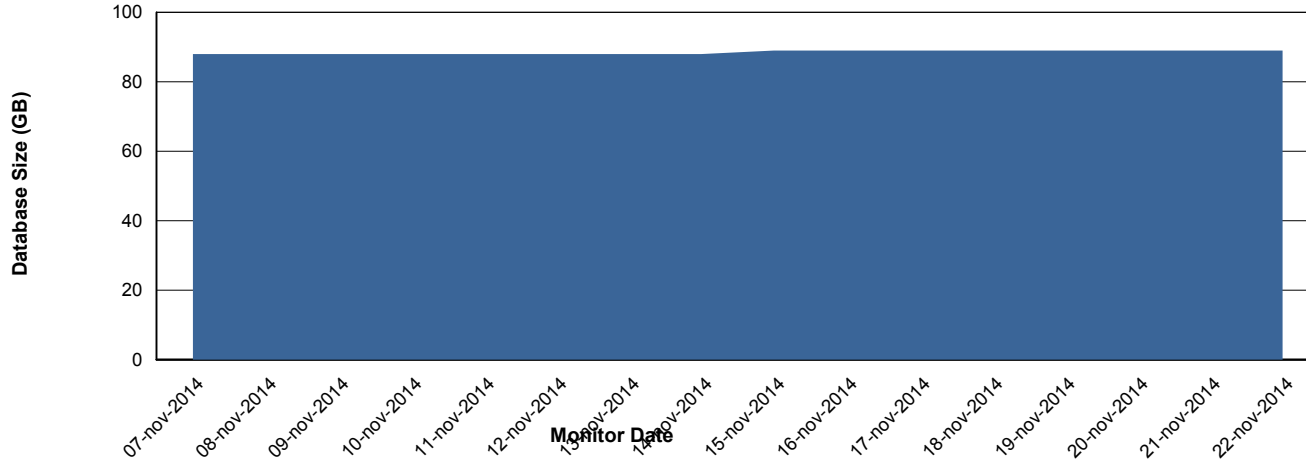
Weekly SLA Customer Report

Customer VEN_Production
 Database ID 35



=====
 DATABASE SIZE VENDB_Production
 =====

Database growth over last month



=====
 DATABASE TABLESPACES VENDB_Production
 =====

TOTAL DATABASE SIZE PER TABLESPACE

Date	Tablespace Name	Filesize (Gb)	Usedsize (Gb)	Percentage free
22-11-2014	ABSDATA	34	26	24
	INDX	88	62	30
21-11-2014	ABSDATA	34	26	24
	INDX	88	62	30
20-11-2014	ABSDATA	34	26	24
	INDX	88	62	30
19-11-2014	ABSDATA	34	26	24
	INDX	88	62	30
18-11-2014	ABSDATA	34	26	24
	INDX	88	62	30
17-11-2014	ABSDATA	34	26	24
	INDX	88	62	30
16-11-2014	ABSDATA	34	26	24
	INDX	88	62	30

Weekly SLA Customer Report

Customer VEN_Production
Database ID 35



=====
STANDBY DATABASE HEALTH VEN_Production
=====

Recovery lag for last 7 days

