

Weekly SLA Customer Report

Customer PCO Production
 Database ID 44



=====
 HARDDISK USAGE PCO_PRD_ORACLE1
 =====

	Total disk space on C (GB)	Free disk space on C (GB)	Total disk space on D (GB)	Free disk space on D (GB)
22-11-2014	279	184	838	164
21-11-2014	279	184	838	166
20-11-2014	279	184	838	170
19-11-2014	279	184	838	173
18-11-2014	279	184	838	176
17-11-2014	279	184	838	179
16-11-2014	279	184	838	180

=====
 HARDDISK USAGE PCO_PRD_ORACLE2
 =====

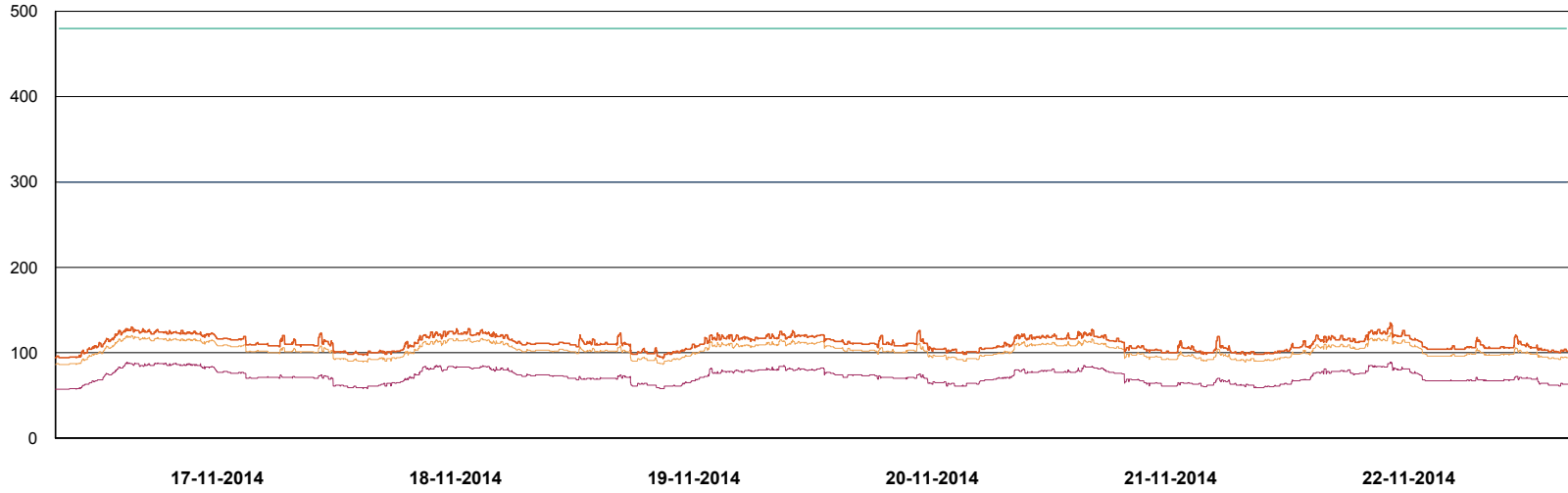
	Total disk space on C (GB)	Free disk space on C (GB)	Total disk space on D (GB)	Free disk space on D (GB)
22-11-2014	279	223	838	496
21-11-2014	279	223	838	498
20-11-2014	279	223	838	501
19-11-2014	279	223	838	504
18-11-2014	279	223	838	507
17-11-2014	279	223	838	510
16-11-2014	279	223	838	512

Weekly SLA Customer Report

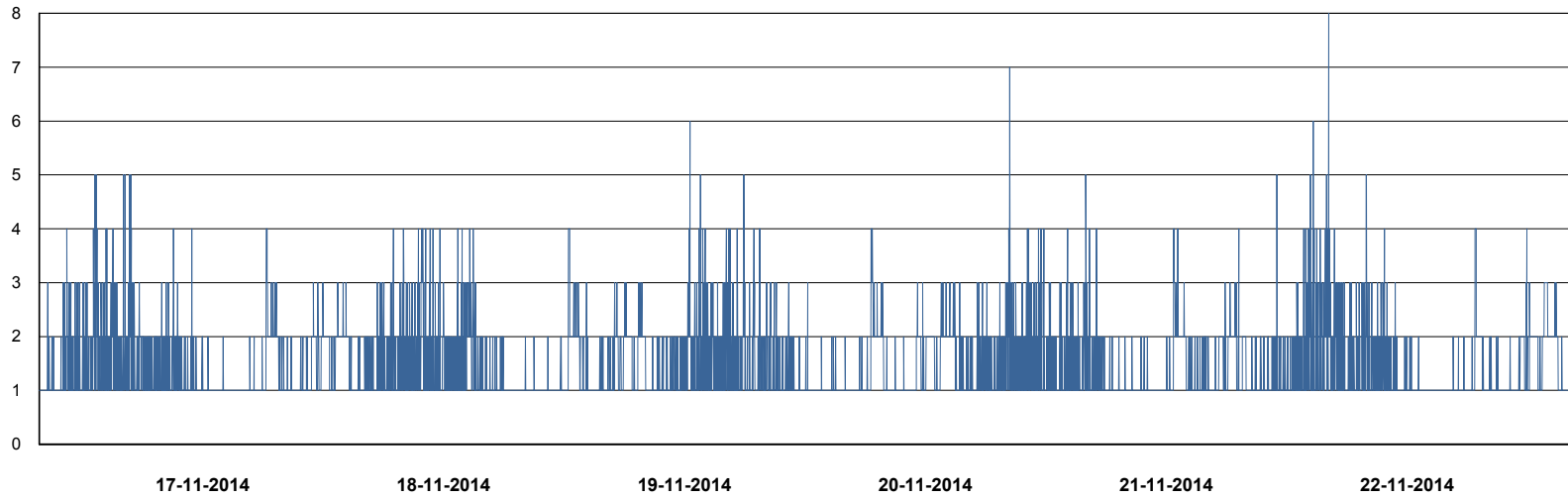
Customer PCO Production
Database ID 44



DATABASE PERFORMANCE PCODB_Production



- DB Processes Max
- DB Processes Used
- DB Sessions Max
- DB Sessions Used
- Users Connected



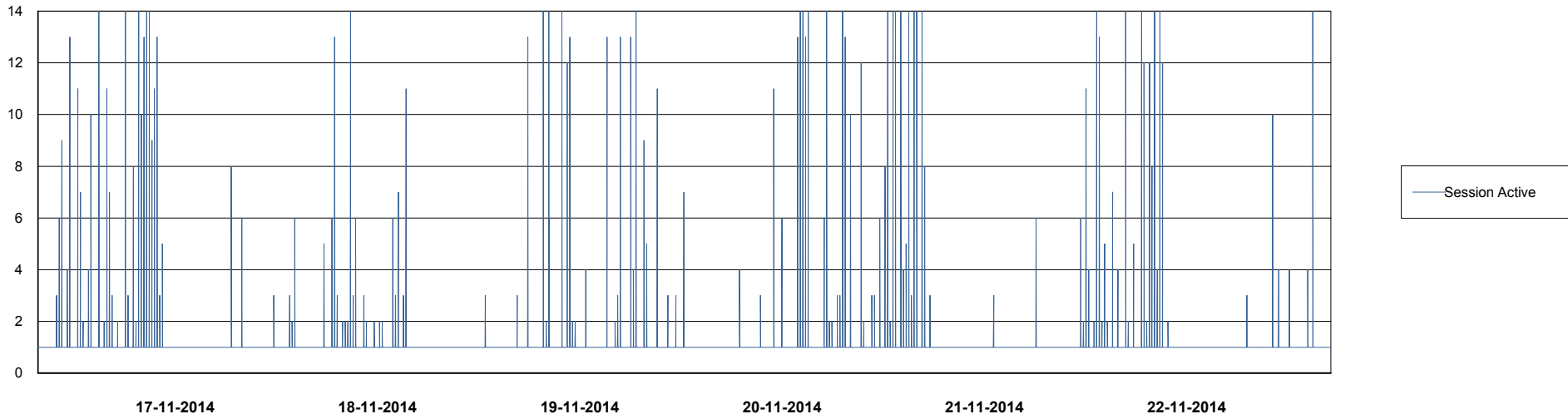
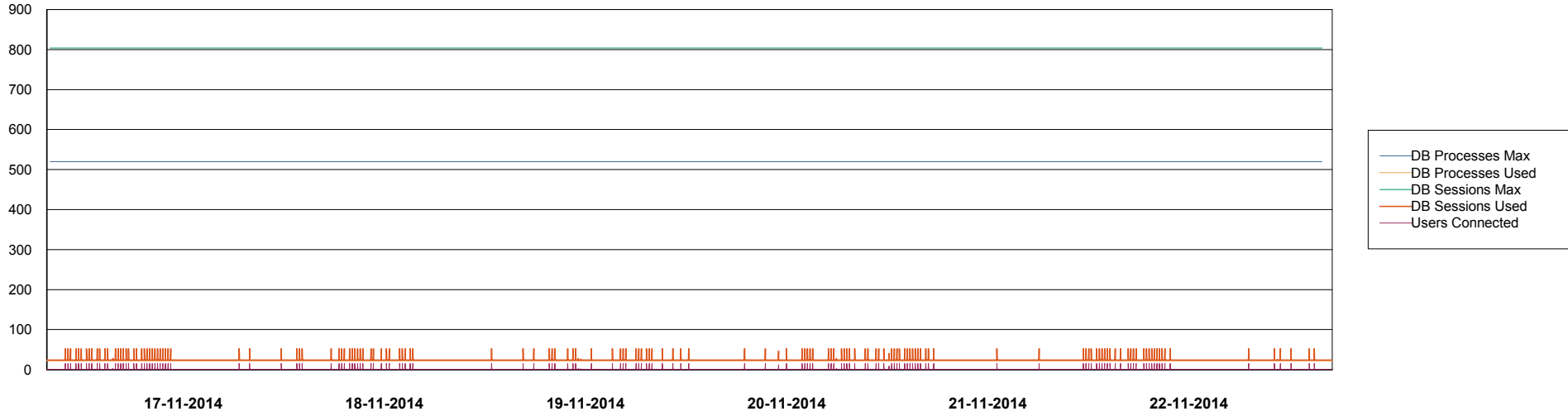
- Session Active

Weekly SLA Customer Report

Customer PCO Production
Database ID 44



DATABASE PERFORMANCE PCODB_Standby



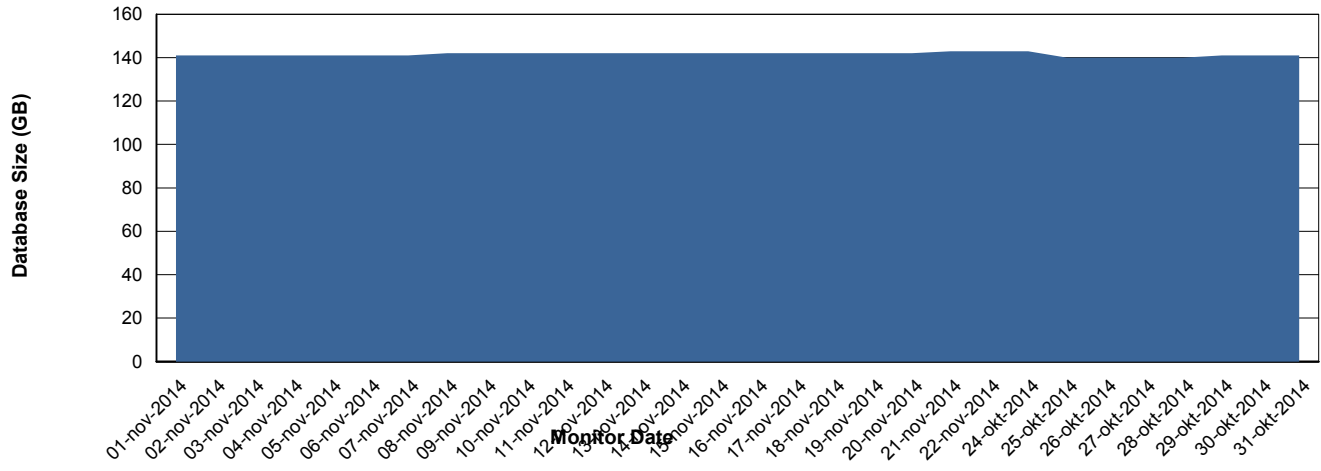
Weekly SLA Customer Report

Customer PCO Production
 Database ID 44



=====
 DATABASE SIZE PCODB_Production
 =====

Database growth over last month



=====
 DATABASE TABLESPACES PCODB_Production
 =====

TOTAL DATABASE SIZE PER TABLESPACE

Date	Tablespace Name	Filesize (Gb)	Usedsize (Gb)	Percentage free
22-11-2014	ABSDATA	72	59	18
	INDX	99	82	17
21-11-2014	ABSDATA	72	59	18
	INDX	99	82	17
20-11-2014	ABSDATA	72	59	18
	INDX	99	82	17
19-11-2014	ABSDATA	72	59	18
	INDX	99	82	17
18-11-2014	ABSDATA	72	59	18
	INDX	99	82	17
17-11-2014	ABSDATA	72	59	18
	INDX	99	82	17
16-11-2014	ABSDATA	72	59	18
	INDX	99	82	17

Weekly SLA Customer Report

Customer PCO Production
Database ID 44



=====
STANDBY DATABASE HEALTH PCO Production
=====

Recovery lag for last 7 days

