

Weekly SLA Customer Report

Customer NIX_Production
Database ID 51



=====
HARDDISK USAGE NIX_PRD_ABSAPP1
=====

	Total disk space on C (GB)	Free disk space on C (GB)
22-11-2014	136	83
21-11-2014	136	83
20-11-2014	136	83
19-11-2014	136	83
18-11-2014	136	83
17-11-2014	136	83
16-11-2014	136	83

=====
HARDDISK USAGE NIX_PRD_ABSWEB1
=====

	Total disk space on C (GB)	Free disk space on C (GB)
22-11-2014	930	772
21-11-2014	930	772
20-11-2014	930	773
19-11-2014	930	773
18-11-2014	930	773
17-11-2014	930	773
16-11-2014	930	774

Weekly SLA Customer Report

Customer NIX_Production
 Database ID 51



=====
 HARDDISK USAGE NIX_PRD_ORACLE_B11
 =====

	Total disk space on C (GB)	Free disk space on C (GB)	Total disk space on D (GB)	Free disk space on D (GB)	Total disk space on E (GB)	Free disk space on E (GB)
22-11-2014	40	6	279	176	236	167
21-11-2014	40	6	279	173	236	157
20-11-2014	40	6	279	173	236	160
19-11-2014	40	6	279	176	236	167
18-11-2014	40	6	279	176	236	167
17-11-2014	40	6	279	176	236	166
16-11-2014	40	6	279	176	236	167

=====
 HARDDISK USAGE NIX_PRD_ORCDB1
 =====

	Total disk space on C (GB)	Free disk space on C (GB)	Total disk space on D (GB)	Free disk space on D (GB)	Total disk space on E (GB)	Free disk space on E (GB)
22-11-2014	136	68	136	36	136	48
21-11-2014	136	68	136	36	136	50
20-11-2014	136	68	136	36	136	50
19-11-2014	136	68	136	36	136	50
18-11-2014	136	68	136	36	136	50
17-11-2014	136	68	136	36	136	50
16-11-2014	136	68	136	36	136	50

Weekly SLA Customer Report

Customer NIX_Production
Database ID 51



HARDDISK USAGE NIX_PRD_ORCDB2

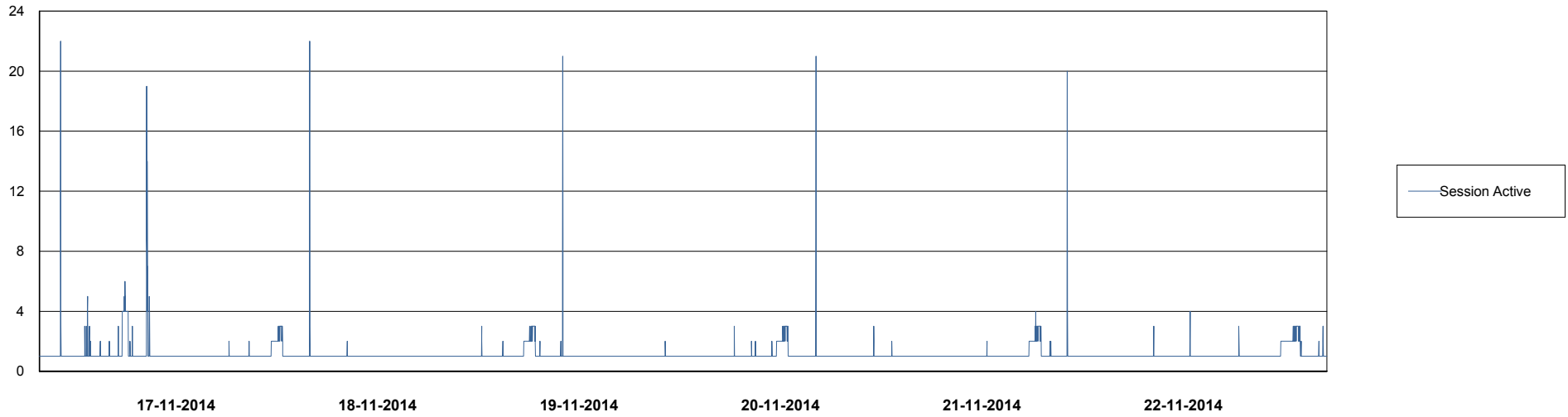
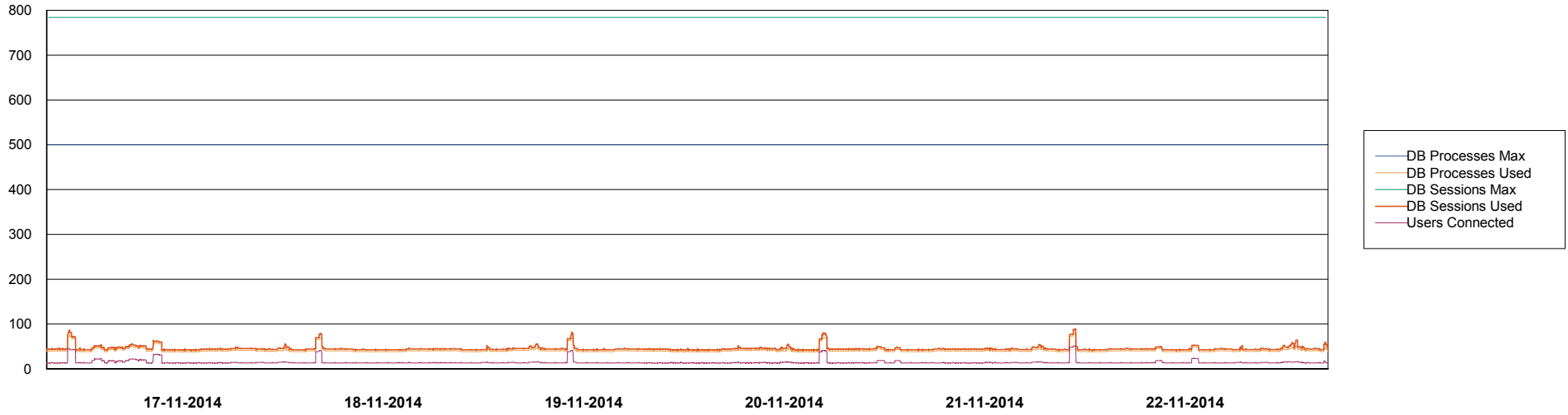
	Total disk space on C (GB)	Free disk space on C (GB)	Total disk space on D (GB)	Free disk space on D (GB)	Total disk space on E (GB)	Free disk space on E (GB)
22-11-2014	279	93	279	68	279	31
21-11-2014	279	93	279	68	279	55
20-11-2014	279	93	279	68	279	66
19-11-2014	279	93	279	68	279	66
18-11-2014	279	93	279	68	279	66
17-11-2014	279	93	279	68	279	36
16-11-2014	279	93	279	68	279	22

Weekly SLA Customer Report

Customer NIX_Production
Database ID 51



=====
DATABASE PERFORMANCE NIXDB_BI
=====

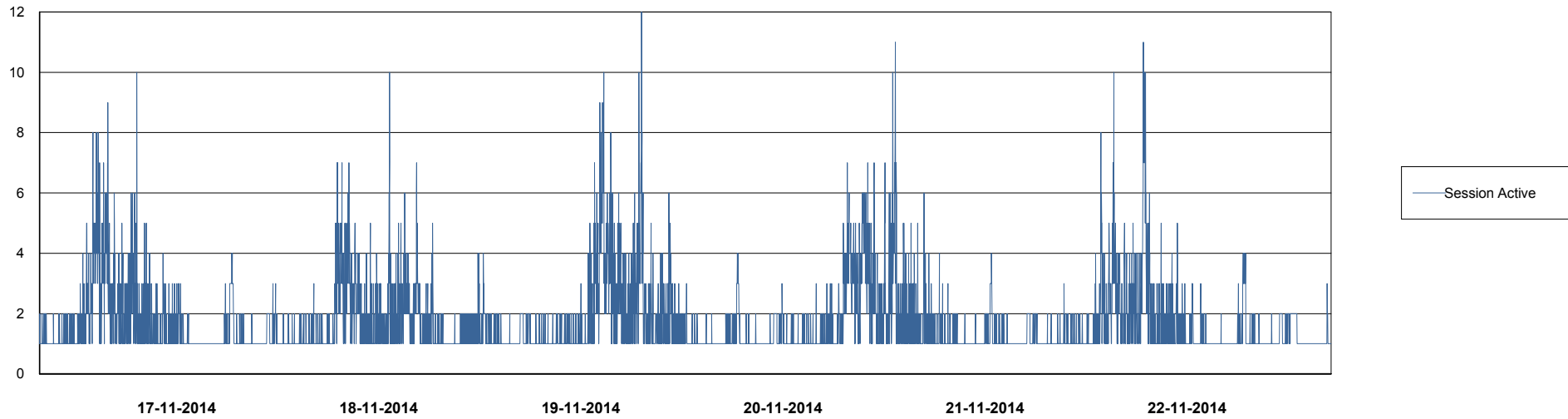
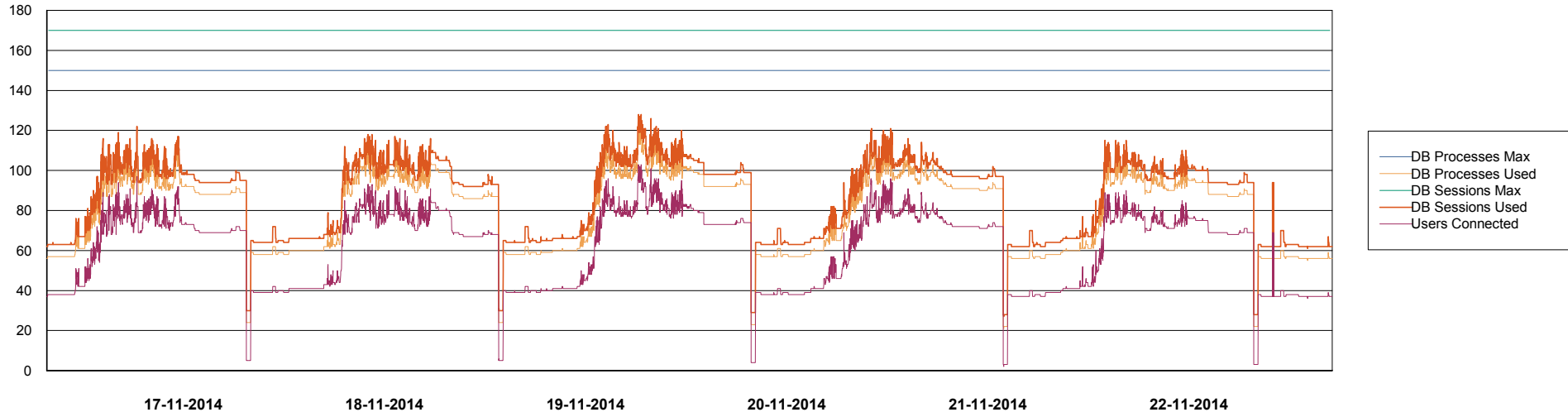


Weekly SLA Customer Report

Customer NIX_Production
Database ID 51



=====
DATABASE PERFORMANCE NIXDB_Production
=====



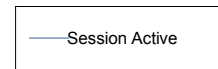
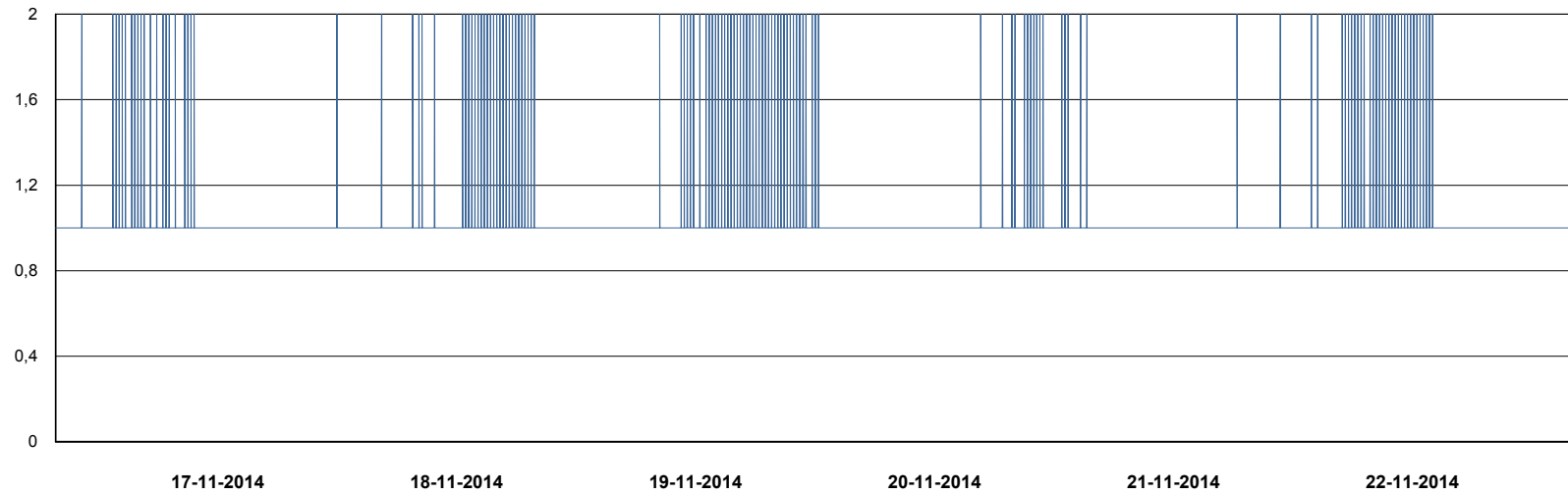
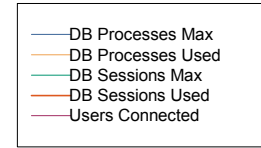
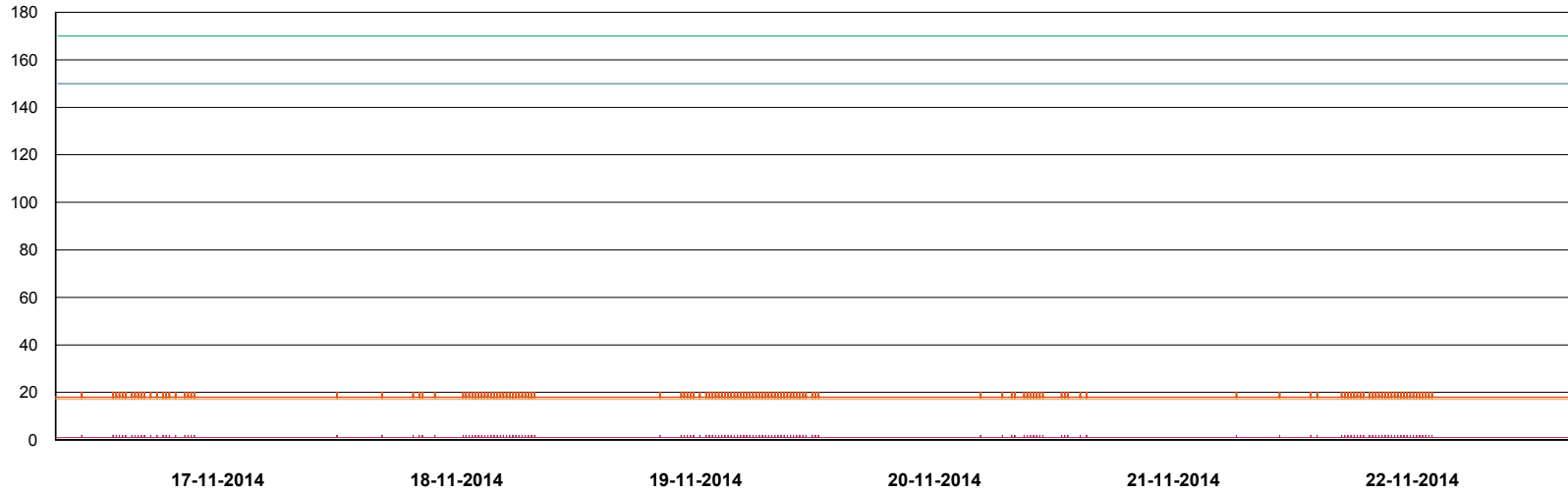
Weekly SLA Customer Report

Customer NIX_Production
Database ID 51



DATABASE PERFORMANCE

NIXDB_Standby



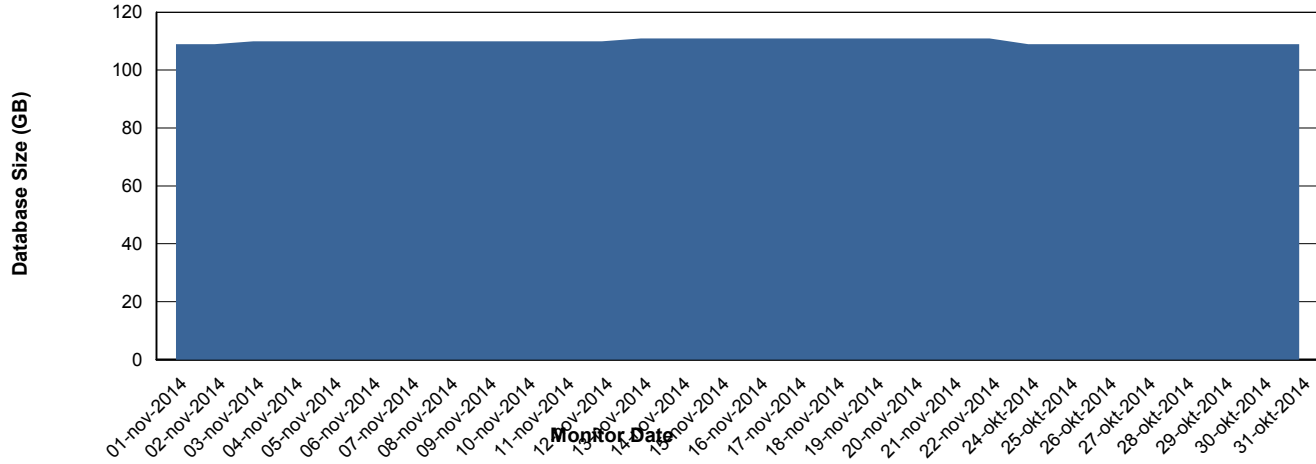
Weekly SLA Customer Report

Customer NIX_Production
Database ID 51



=====
DATABASE SIZE NIXDB_Production
=====

Database growth over last month



Weekly SLA Customer Report

Customer NIX_Production
 Database ID 51



=====
 DATABASE TABLESPACES NIXDB_BI
 =====
 TOTAL DATABASE SIZE PER TABLESPACE

Date	Tablespace Name	Filesize (Gb)	Usedsize (Gb)	Percentage free
22-11-2014	ABSDATA	22	18	18
	INDX	40	28	30
21-11-2014	ABSDATA	22	18	18
	INDX	40	28	30
20-11-2014	ABSDATA	22	18	18
	INDX	40	28	30
19-11-2014	ABSDATA	22	18	18
	INDX	40	28	30
18-11-2014	ABSDATA	22	18	18
	INDX	40	28	30
17-11-2014	ABSDATA	22	18	18
	INDX	40	28	30
16-11-2014	ABSDATA	22	18	18
	INDX	40	28	30

Weekly SLA Customer Report

Customer NIX_Production
 Database ID 51



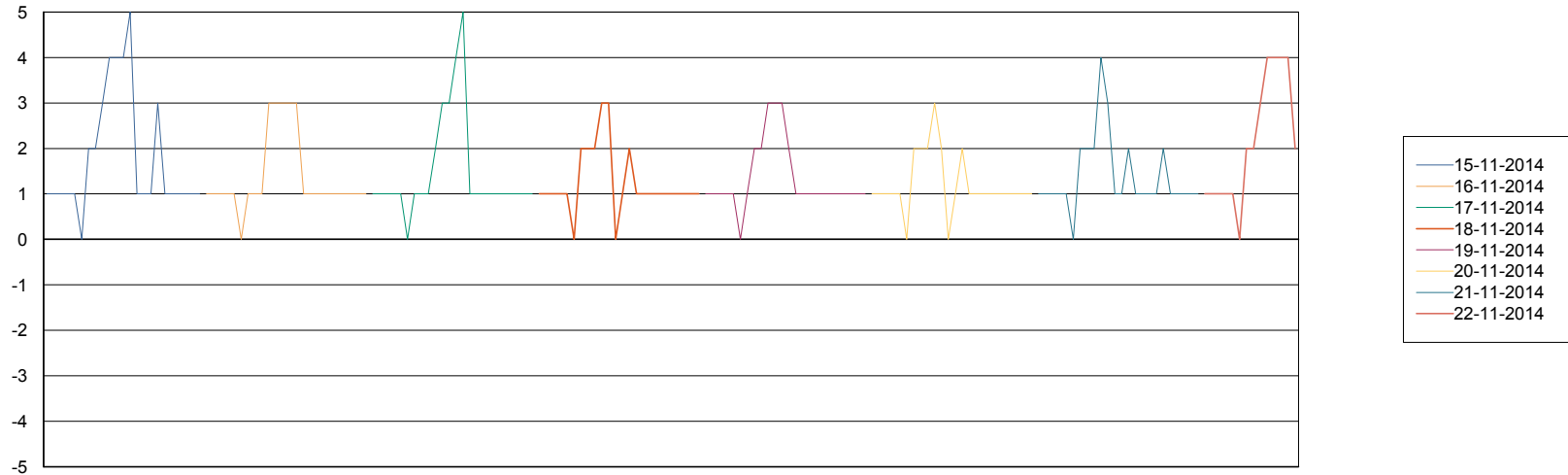
=====
 DATABASE TABLESPACES NIXDB_Production
 =====

TOTAL DATABASE SIZE PER TABLESPACE

Date	Tablespace Name	Filesize (Gb)	Usedsize (Gb)	Percentage free
22-11-2014	ABSDATA	40	29	28
	INDX	97	80	18
21-11-2014	ABSDATA	40	29	28
	INDX	97	80	18
20-11-2014	ABSDATA	40	29	28
	INDX	97	80	18
19-11-2014	ABSDATA	40	29	28
	INDX	97	80	18
18-11-2014	ABSDATA	40	29	28
	INDX	97	79	19
17-11-2014	ABSDATA	40	29	28
	INDX	97	79	19
16-11-2014	ABSDATA	40	29	28
	INDX	97	79	19

=====
 STANDBY DATABASE HEALTH NIX_Production
 =====

Recovery lag for last 7 days



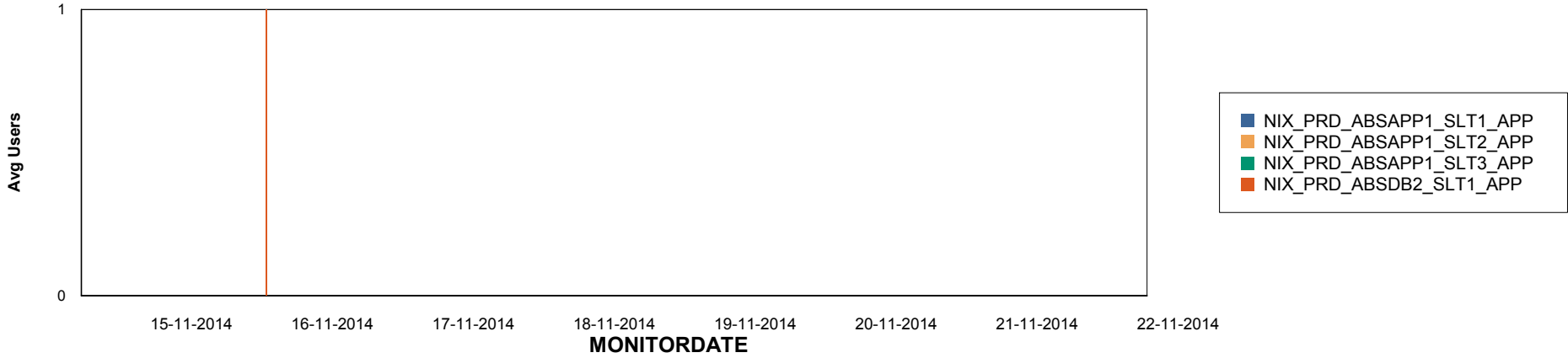
Weekly SLA Customer Report

Customer NIX_Production
Database ID 51

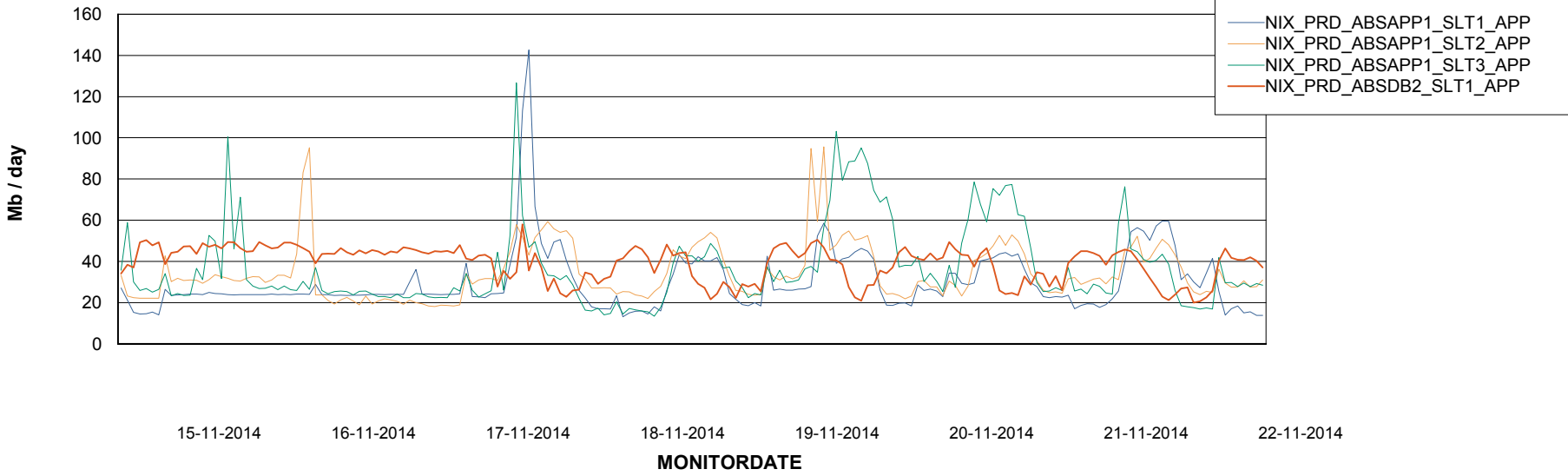


=====
ABSolute Application Server Services
=====

Disaster per ABS Server



Avg memory used per ABS Server Service



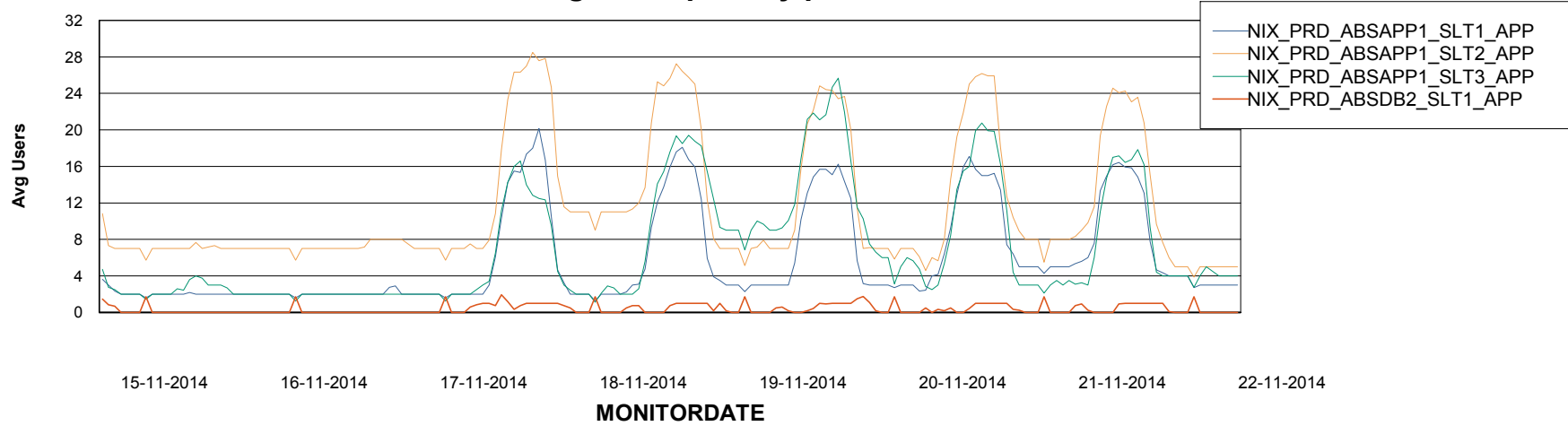
Weekly SLA Customer Report

Customer NIX_Production
Database ID 51



=====
ABSolute Application Server Services
=====

Avg users per day per ABS server



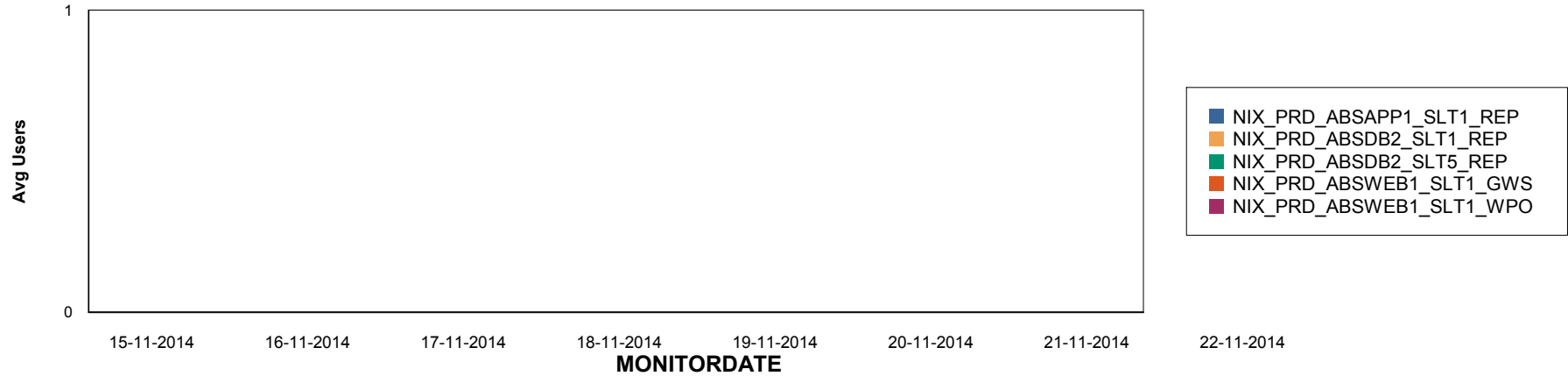
Weekly SLA Customer Report

Customer NIX_Production
Database ID 51

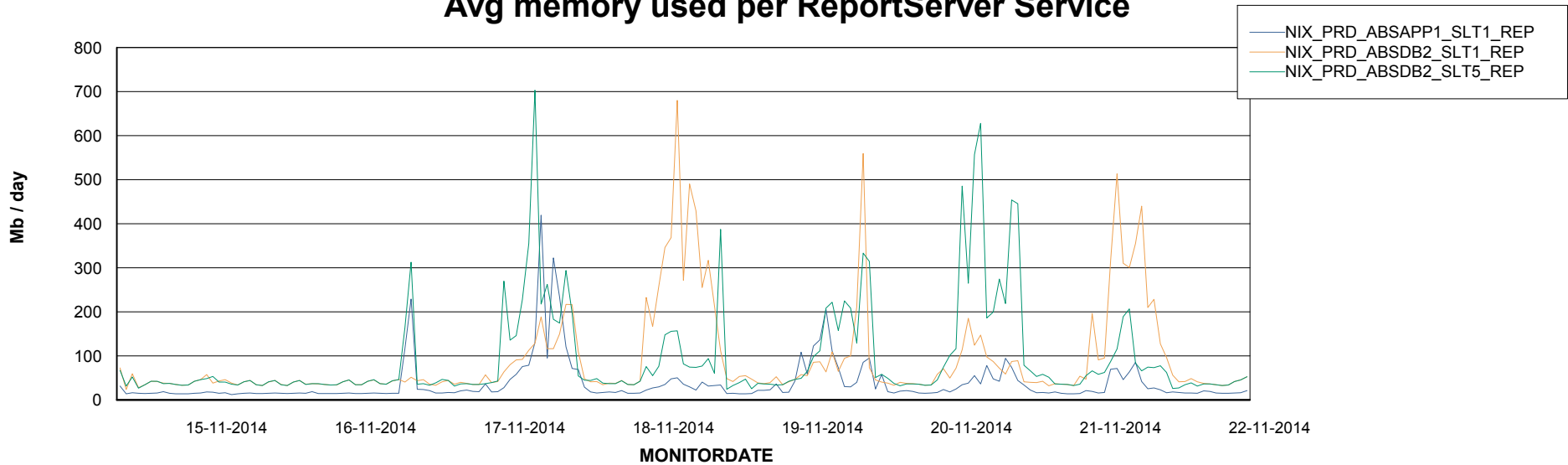


=====
ABSolute Application ReportServer Services
=====

Disaster per ReportServer



Avg memory used per ReportServer Service



Weekly SLA Customer Report

Customer NIX_Production
Database ID 51



Disaster per ABS component

