

Weekly SLA Customer Report

Customer CIW Production
 Database ID 45



=====
 HARDDISK USAGE CIW_PRD_ORACLE1
 =====

	Total disk space on C (GB)	Free disk space on C (GB)	Total disk space on D (GB)	Free disk space on D (GB)	Total disk space on E (GB)	Free disk space on E (GB)
22-11-2014	276	149	279	186	279	52
21-11-2014	276	149	279	186	279	53
20-11-2014	276	149	279	186	279	54
19-11-2014	276	149	279	186	279	55
18-11-2014	276	149	279	186	279	56
17-11-2014	276	150	279	186	279	49
16-11-2014	276	150	279	186	279	42

=====
 HARDDISK USAGE CIW_PRD_ORACLE2
 =====

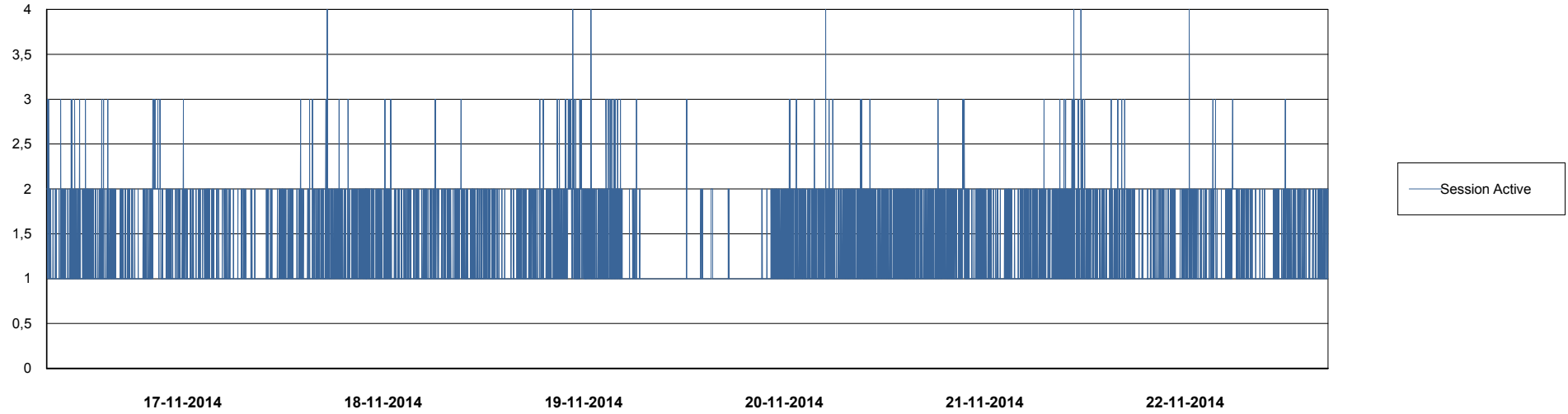
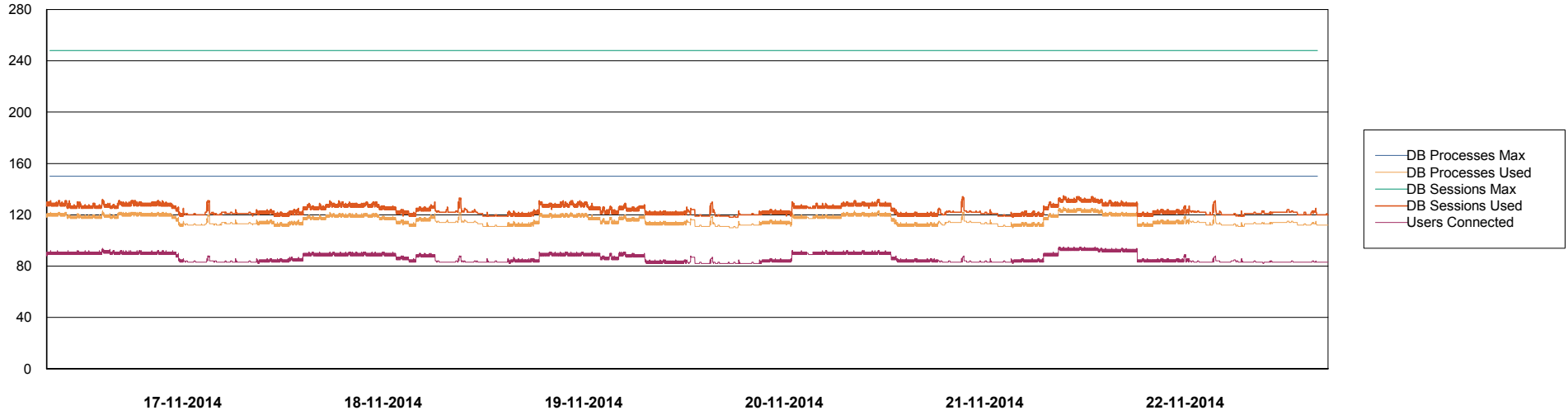
	Total disk space on C (GB)	Free disk space on C (GB)	Total disk space on D (GB)	Free disk space on D (GB)	Total disk space on E (GB)	Free disk space on E (GB)
22-11-2014	555	397	558	550	558	502
21-11-2014	555	397	558	550	558	503
20-11-2014	555	397	558	550	558	503
19-11-2014	555	397	558	550	558	504
18-11-2014	555	397	558	550	558	505
17-11-2014	555	398	558	550	558	506
16-11-2014	555	398	558	550	558	508

Weekly SLA Customer Report

Customer CIW Production
Database ID 45



DATABASE PERFORMANCE CIWDB_Production

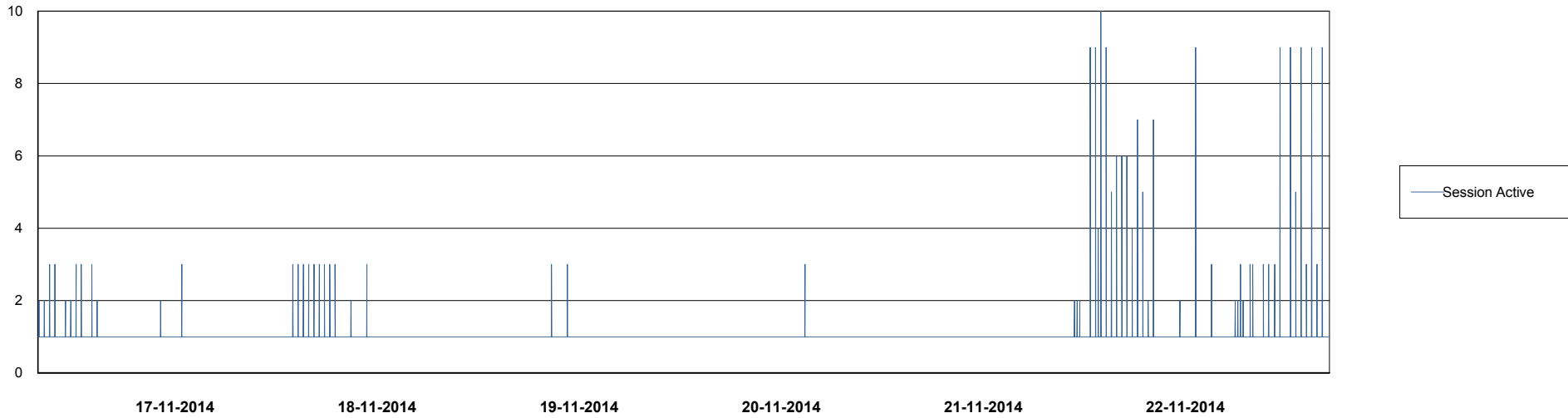
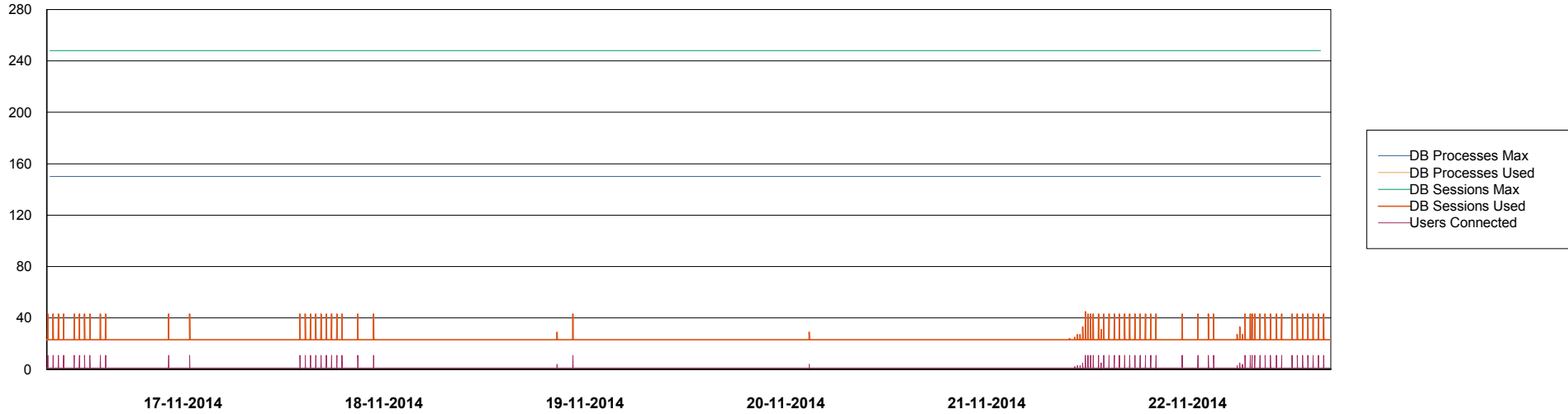


Weekly SLA Customer Report

Customer CIW Production
Database ID 45



DATABASE PERFORMANCE CIWDB_Standby



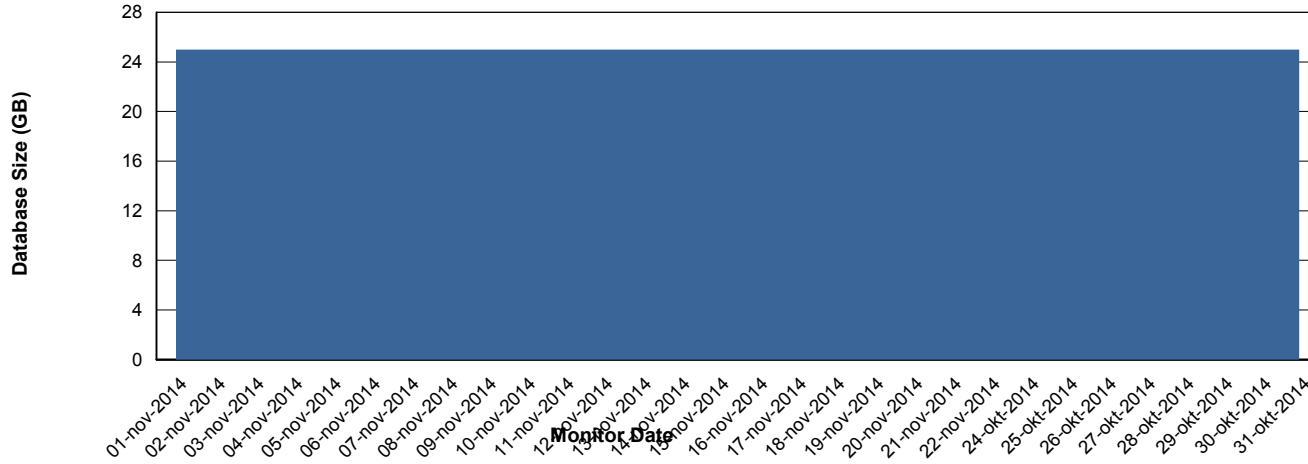
Weekly SLA Customer Report

Customer CIW Production
 Database ID 45



=====
 DATABASE SIZE CIWDB_Production
 =====

Database growth over last month



=====
 DATABASE TABLESPACES CIWDB_Production
 =====

TOTAL DATABASE SIZE PER TABLESPACE

Date	Tablespace Name	Filesize (Gb)	Usedsize (Gb)	Percentage free
22-11-2014	ABSDATA	28	23	18
	INDX	3	2	33
21-11-2014	ABSDATA	28	23	18
	INDX	3	2	33
20-11-2014	ABSDATA	28	23	18
	INDX	3	2	33
19-11-2014	ABSDATA	28	23	18
	INDX	3	2	33
18-11-2014	ABSDATA	28	23	18
	INDX	3	2	33
17-11-2014	ABSDATA	28	23	18
	INDX	3	2	33
16-11-2014	ABSDATA	27	23	15
	INDX	3	2	33

Weekly SLA Customer Report

Customer CIW Production
Database ID 45



=====
STANDBY DATABASE HEALTH CIW Production
=====

Recovery lag for last 7 days

