

Weekly SLA Customer Report

Customer BCH Production
 Database ID 28



=====
 HARDDISK USAGE BCH_PRD_ORCDB1
 =====

	Total disk space on C (GB)	Free disk space on C (GB)	Total disk space on D (GB)	Free disk space on D (GB)
22-11-2014	278	158	278	60
21-11-2014	278	159	278	63
20-11-2014	278	159	278	66
19-11-2014	278	159	278	69
18-11-2014	278	159	278	71
17-11-2014	278	159	278	76
16-11-2014	278	159	278	78

=====
 HARDDISK USAGE BCH_PRD_ORCDB2
 =====

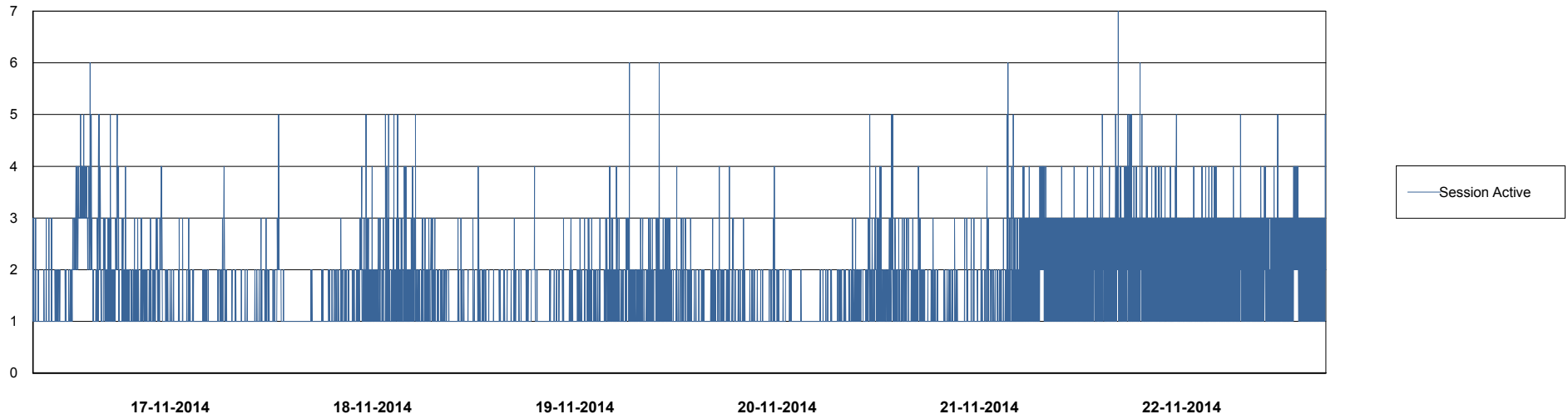
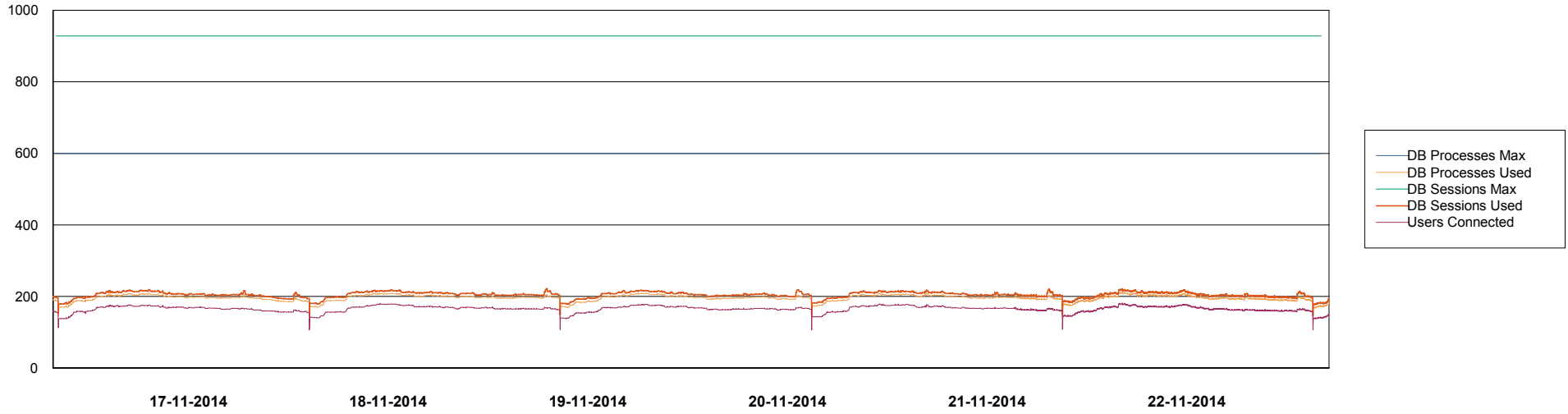
	Total disk space on C (GB)	Free disk space on C (GB)	Total disk space on D (GB)	Free disk space on D (GB)
22-11-2014	278	188	278	57
21-11-2014	278	188	278	60
20-11-2014	278	188	278	63
19-11-2014	278	188	278	66
18-11-2014	278	188	278	69
17-11-2014	278	189	278	73
16-11-2014	278	189	278	75

Weekly SLA Customer Report

Customer BCH Production
Database ID 28



DATABASE PERFORMANCE BCHDB_Production

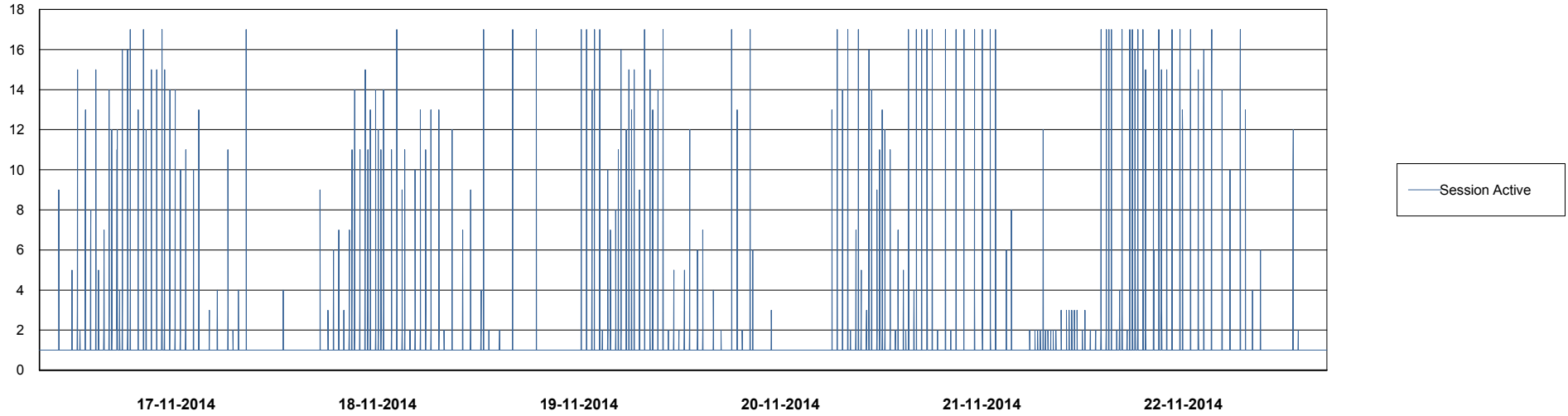
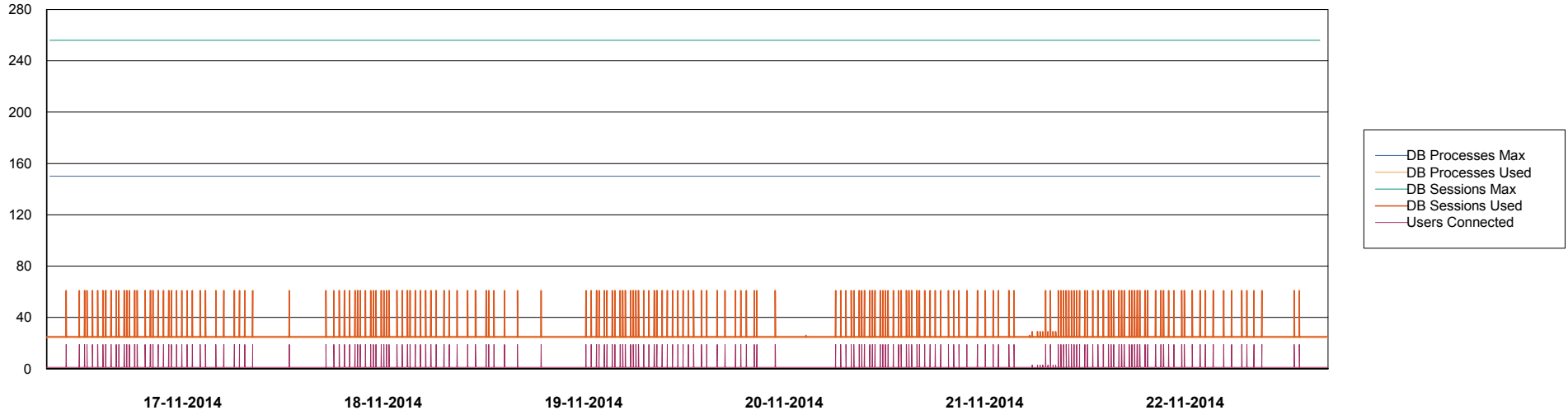


Weekly SLA Customer Report

Customer BCH Production
Database ID 28



DATABASE PERFORMANCE BCHDB_Standby



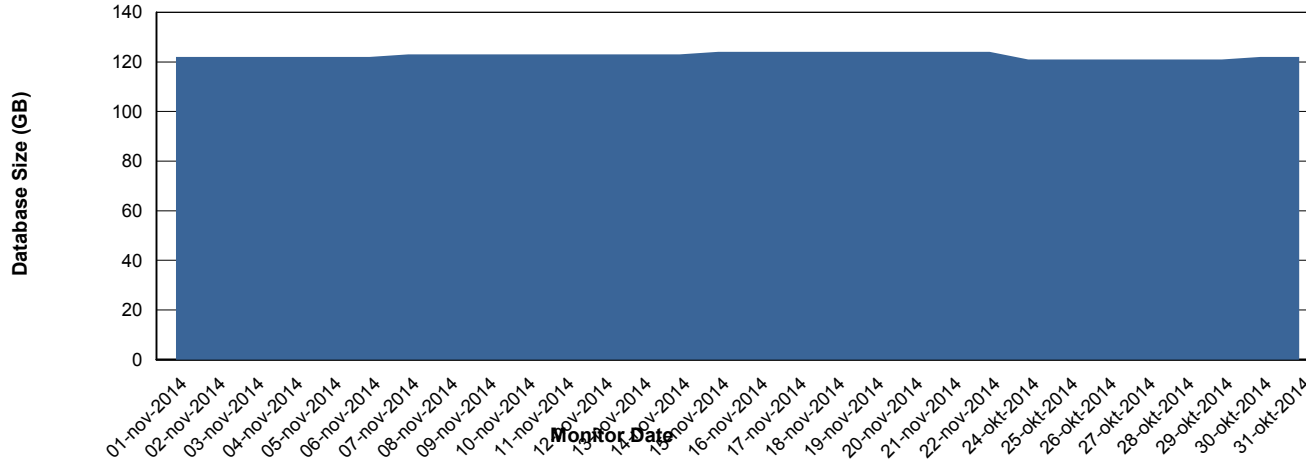
Weekly SLA Customer Report

Customer BCH Production
 Database ID 28



=====
 DATABASE SIZE BCHDB_Production
 =====

Database growth over last month



=====
 DATABASE TABLESPACES BCHDB_Production
 =====

TOTAL DATABASE SIZE PER TABLESPACE

Date	Tablespace Name	Filesize (Gb)	Usedsize (Gb)	Percentage free
22-11-2014	ABSDATA	28	23	18
	INDX	118	99	16
21-11-2014	ABSDATA	28	23	18
	INDX	118	99	16
20-11-2014	ABSDATA	28	23	18
	INDX	118	99	16
19-11-2014	ABSDATA	28	23	18
	INDX	118	99	16
18-11-2014	ABSDATA	28	23	18
	INDX	118	99	16
17-11-2014	ABSDATA	28	23	18
	INDX	118	99	16
16-11-2014	ABSDATA	27	23	15
	INDX	116	99	15

Weekly SLA Customer Report

Customer BCH Production
Database ID 28



=====
STANDBY DATABASE HEALTH BCH Production
=====

Recovery lag for last 7 days

