

Weekly SLA Customer Report

Customer WBL_Production
Database ID 40

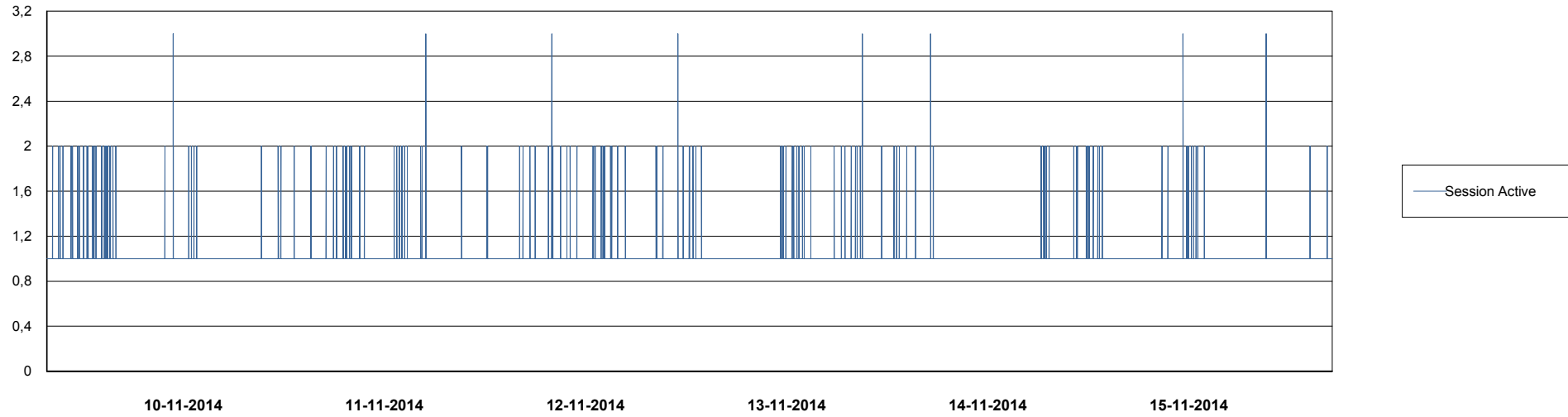
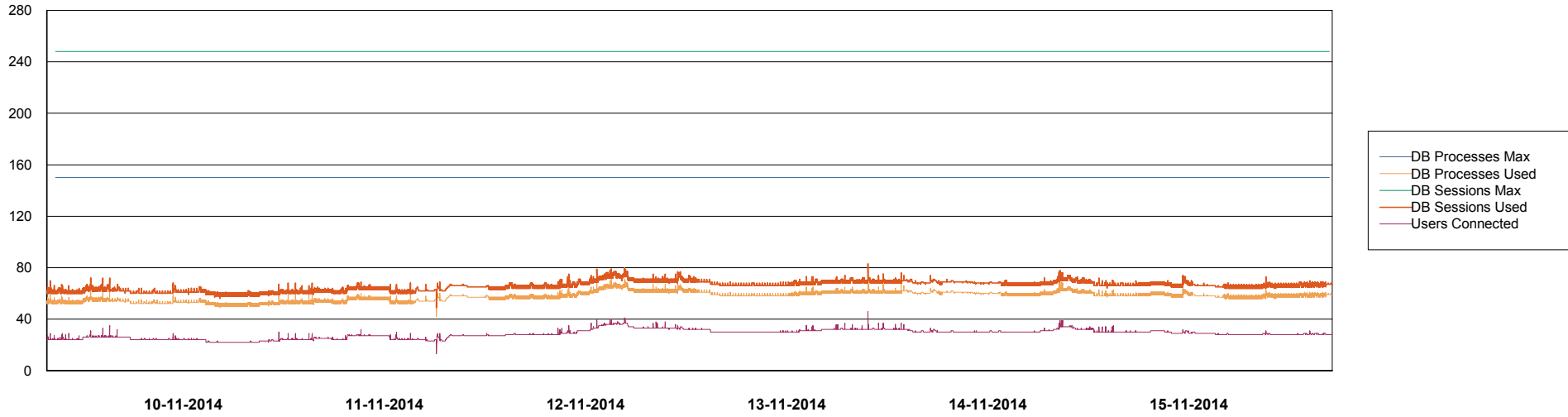


Weekly SLA Customer Report

Customer WBL_Production
Database ID 40



DATABASE PERFORMANCE WBLDB_Production

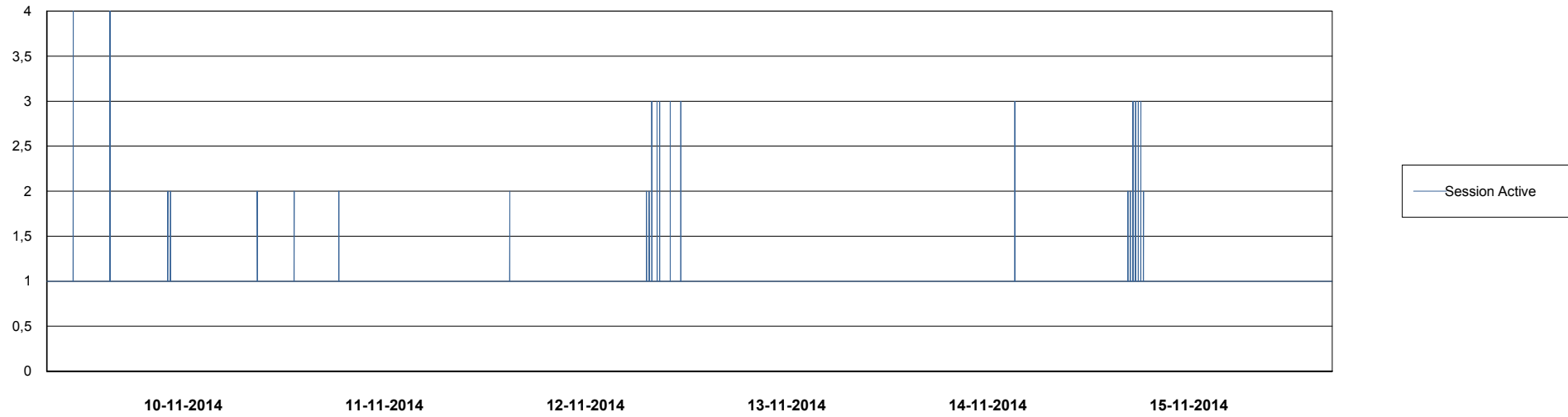
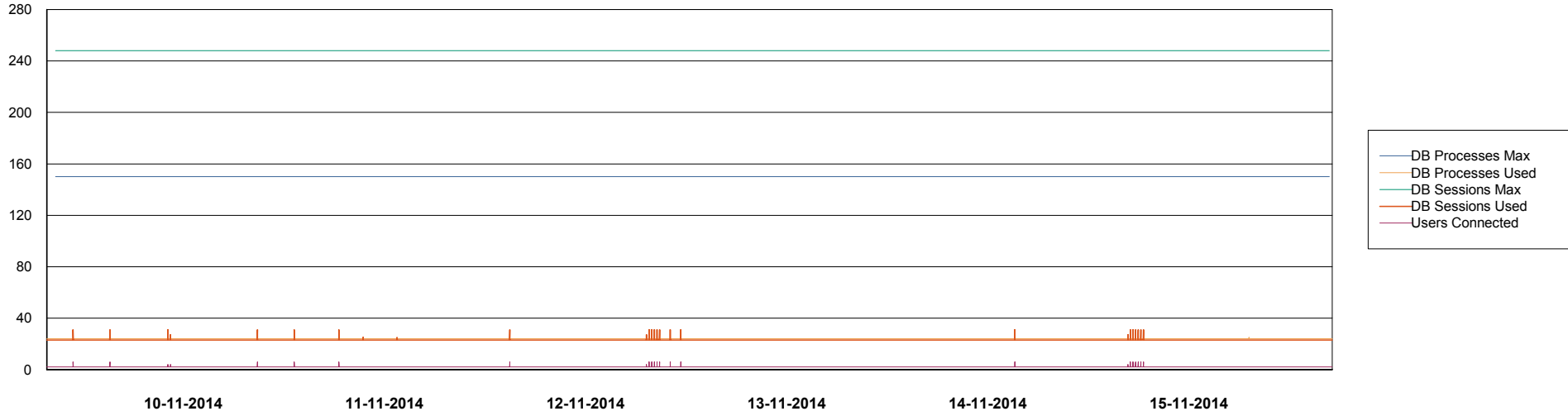


Weekly SLA Customer Report

Customer WBL_Production
Database ID 40



DATABASE PERFORMANCE WBLDB_Standby



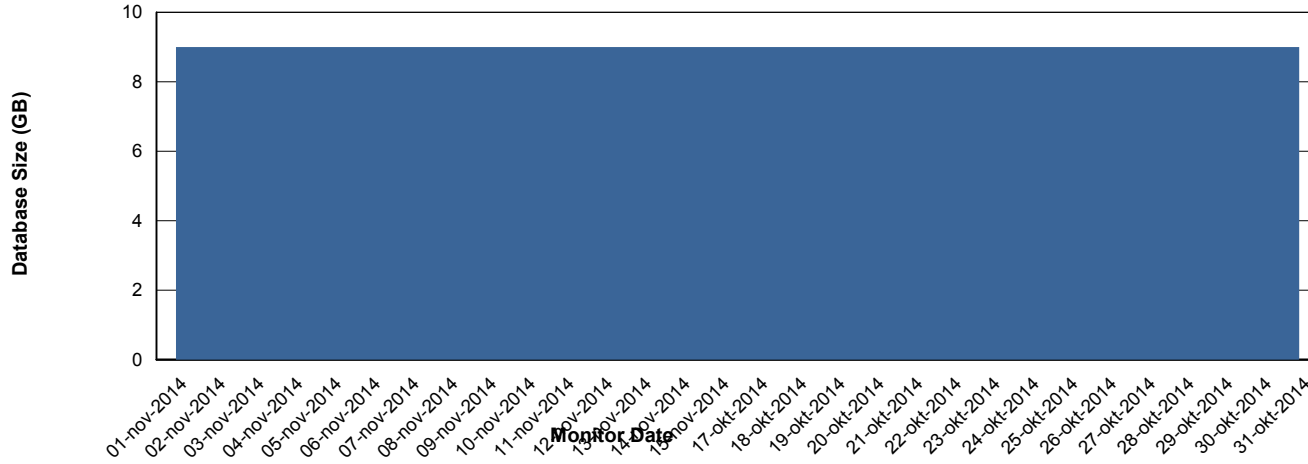
Weekly SLA Customer Report

Customer WBL_Production
 Database ID 40



=====
 DATABASE SIZE WBLDB_Production
 =====

Database growth over last month



=====
 DATABASE TABLESPACES WBLDB_Production
 =====

TOTAL DATABASE SIZE PER TABLESPACE

Date	Tablespace Name	Filesize (Gb)	Usedsize (Gb)	Percentage free
15-11-2014	ABSDATA	6	4	33
	INDX	5	4	20
14-11-2014	ABSDATA	6	4	33
	INDX	5	4	20
13-11-2014	ABSDATA	6	4	33
	INDX	5	4	20
12-11-2014	ABSDATA	6	4	33
	INDX	5	4	20
11-11-2014	ABSDATA	6	4	33
	INDX	5	4	20
10-11-2014	ABSDATA	6	4	33
	INDX	5	4	20
9-11-2014	ABSDATA	6	4	33
	INDX	5	4	20

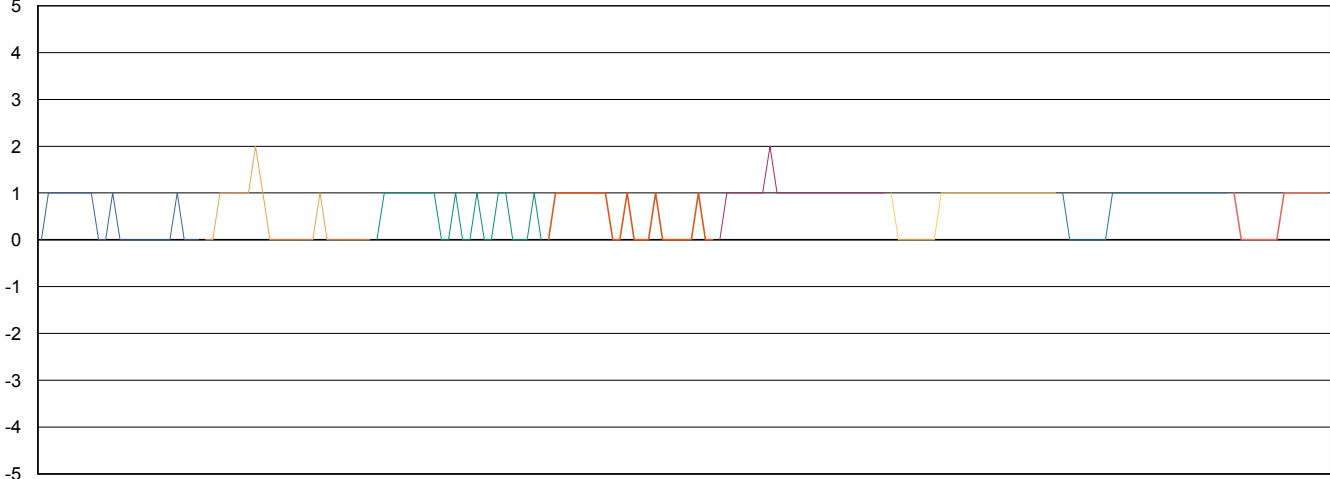
Weekly SLA Customer Report

Customer WBL_Production
Database ID 40



=====
STANDBY DATABASE HEALTH WBL_Production
=====

Recovery lag for last 7 days



- 8-11-2014
- 9-11-2014
- 10-11-2014
- 11-11-2014
- 12-11-2014
- 13-11-2014
- 14-11-2014
- 15-11-2014