

# Weekly SLA Customer Report

Customer NIX\_Production  
 Database ID 51



=====  
 HARDDISK USAGE NIX\_PRD\_ABSAPP1  
 =====

	Total disk space on C (GB)	Free disk space on C (GB)
15-11-2014	136	83
14-11-2014	136	83
13-11-2014	136	83
12-11-2014	136	83
11-11-2014	136	83
10-11-2014	136	84
9-11-2014	136	84

=====  
 HARDDISK USAGE NIX\_PRD\_ABSWEB1  
 =====

	Total disk space on C (GB)	Free disk space on C (GB)
15-11-2014	930	774
14-11-2014	930	763
13-11-2014	930	723
12-11-2014	930	729
11-11-2014	930	730
10-11-2014	930	730
9-11-2014	930	730

## Weekly SLA Customer Report

Customer      NIX\_Production  
 Database ID    51



=====  
 HARDDISK USAGE    NIX\_PRD\_ORACLE\_BI1  
 =====

	Total disk space on C (GB)	Free disk space on C (GB)	Total disk space on D (GB)	Free disk space on D (GB)	Total disk space on E (GB)	Free disk space on E (GB)
15-11-2014	40	6	279	177	236	167
14-11-2014	40	6	279	177	236	167
13-11-2014	40	6	279	177	236	167
12-11-2014	40	6	279	174	236	167
11-11-2014	40	6	279	174	236	167
10-11-2014	40	6	279	174	236	167
9-11-2014	40	6	279	174	236	167

=====  
 HARDDISK USAGE    NIX\_PRD\_ORCDB1  
 =====

	Total disk space on C (GB)	Free disk space on C (GB)	Total disk space on D (GB)	Free disk space on D (GB)	Total disk space on E (GB)	Free disk space on E (GB)
15-11-2014	136	68	136	36	136	49
14-11-2014	136	69	136	36	136	51
13-11-2014	136	69	136	36	136	51
12-11-2014	136	69	136	36	136	51
11-11-2014	136	69	136	36	136	51
10-11-2014	136	69	136	36	136	51
9-11-2014	136	69	136	36	136	51

## Weekly SLA Customer Report

Customer      NIX\_Production  
 Database ID    51



=====  
 HARDDISK USAGE    NIX\_PRD\_ORCDB2  
 =====

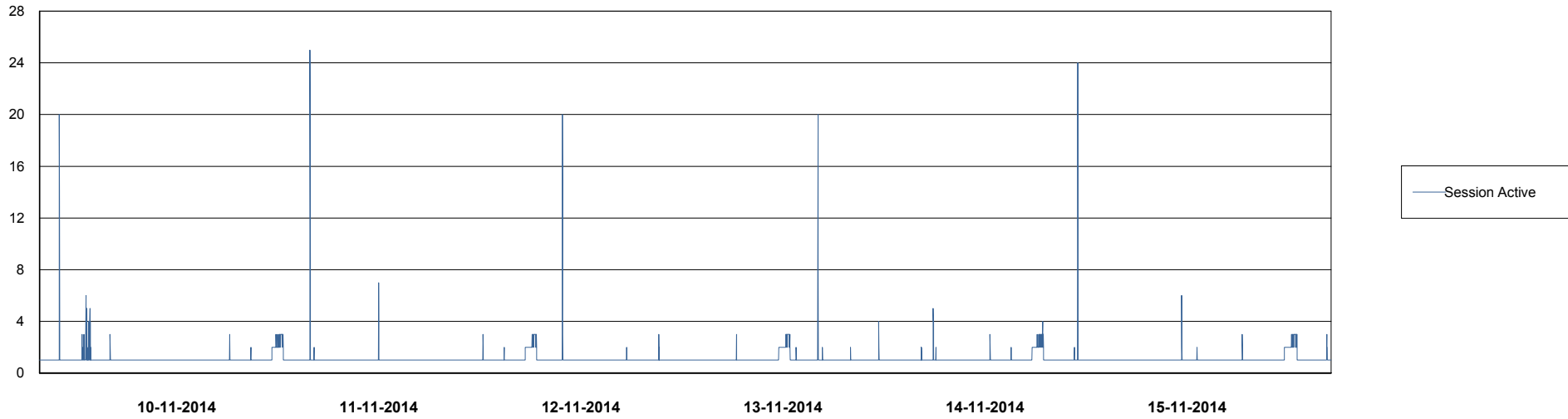
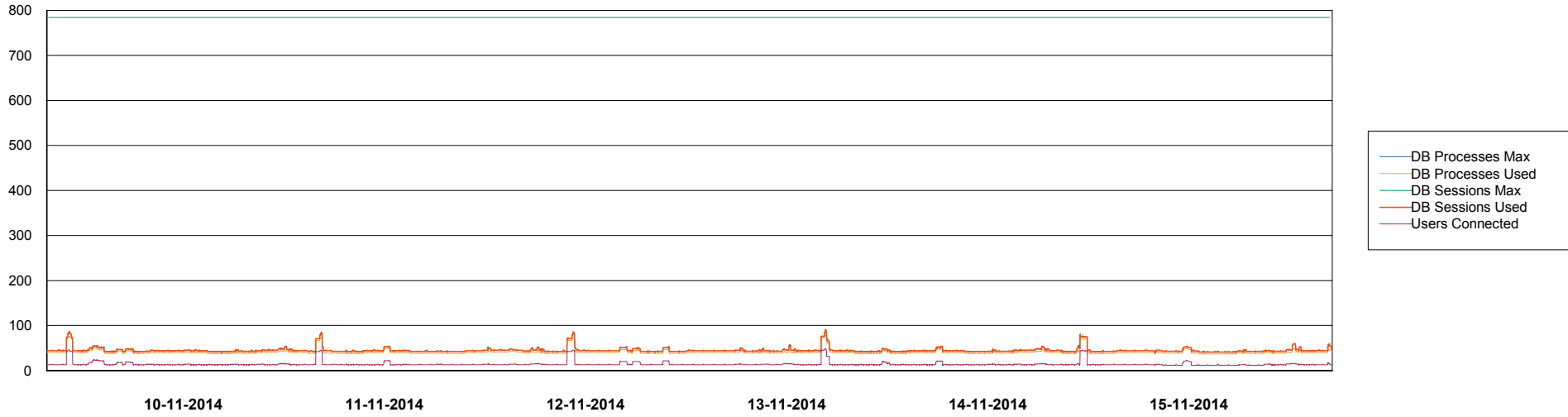
	Total disk space on C (GB)	Free disk space on C (GB)	Total disk space on D (GB)	Free disk space on D (GB)	Total disk space on E (GB)	Free disk space on E (GB)
15-11-2014	279	93	279	68	279	34
14-11-2014	279	92	279	68	279	46
13-11-2014	279	92	279	68	279	59
12-11-2014	279	93	279	68	279	88
11-11-2014	279	93	279	68	279	95
10-11-2014	279	92	279	68	279	117
9-11-2014	279	91	279	68	279	146

# Weekly SLA Customer Report

Customer NIX\_Production  
Database ID 51



=====  
DATABASE PERFORMANCE NIXDB\_BI  
=====



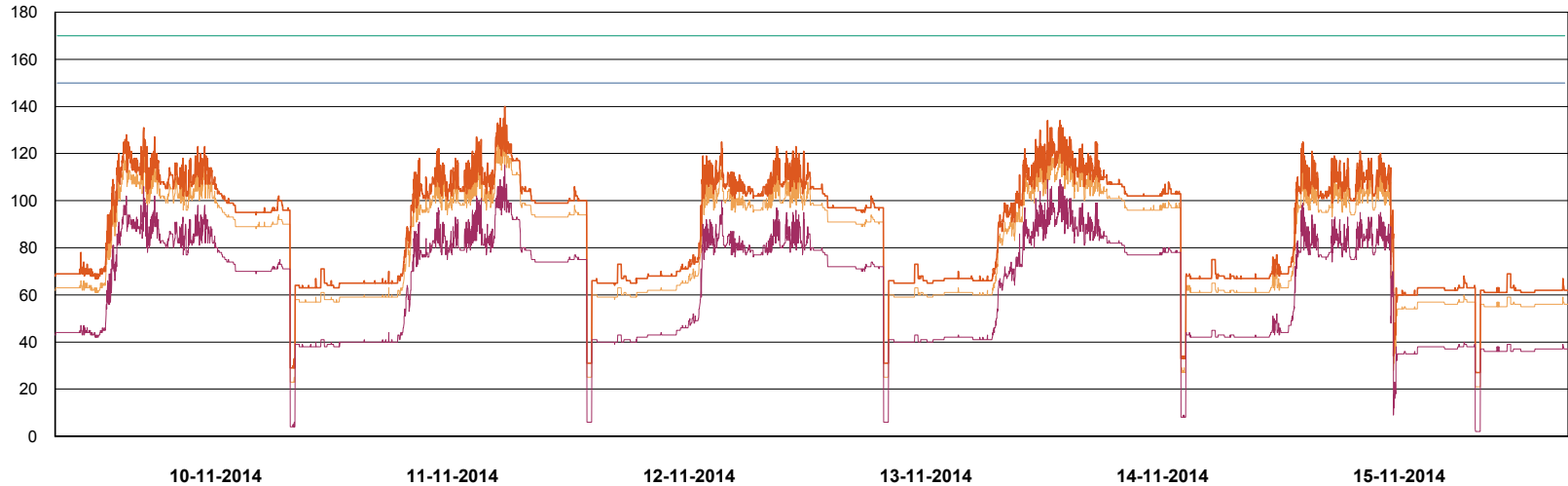
# Weekly SLA Customer Report

Customer NIX\_Production  
Database ID 51

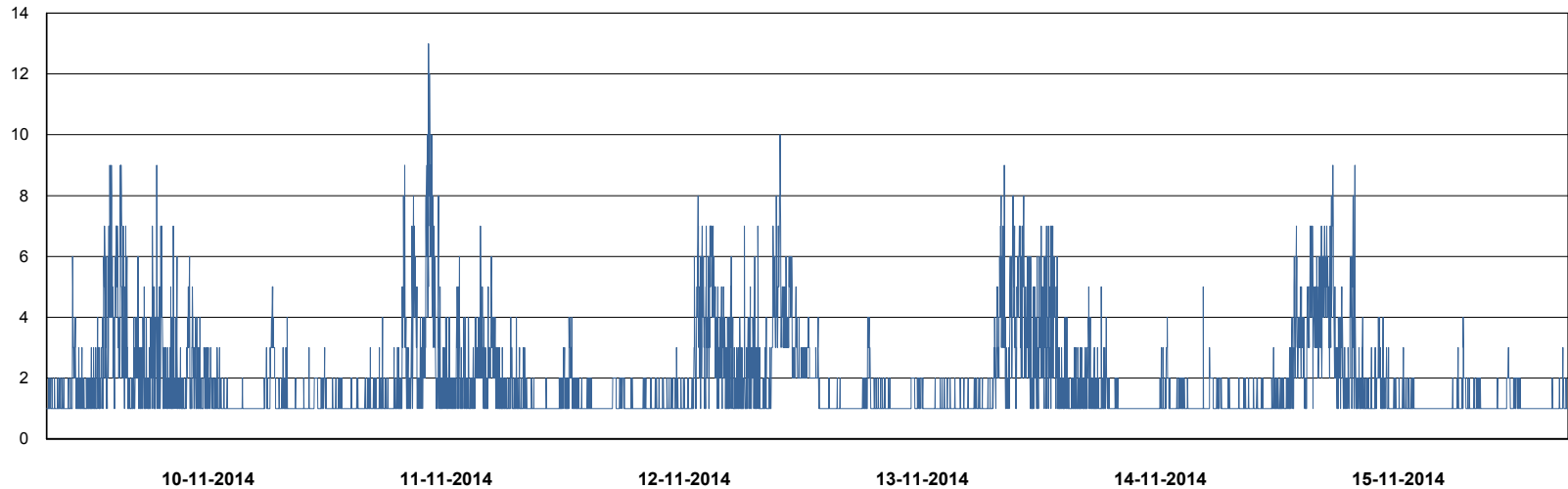


## DATABASE PERFORMANCE

NIXDB\_Production



- DB Processes Max
- DB Processes Used
- DB Sessions Max
- DB Sessions Used
- Users Connected



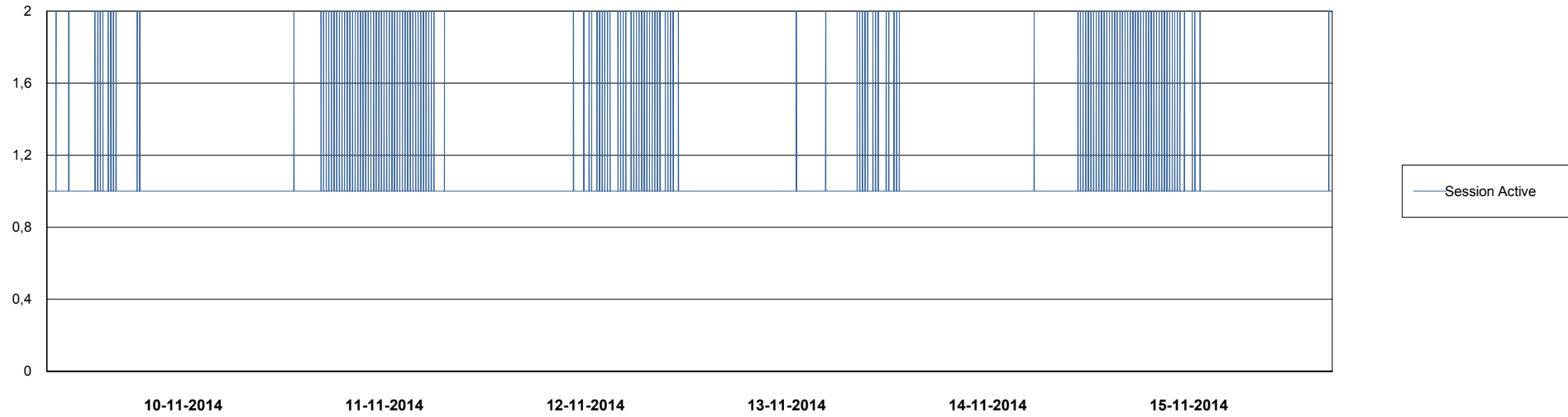
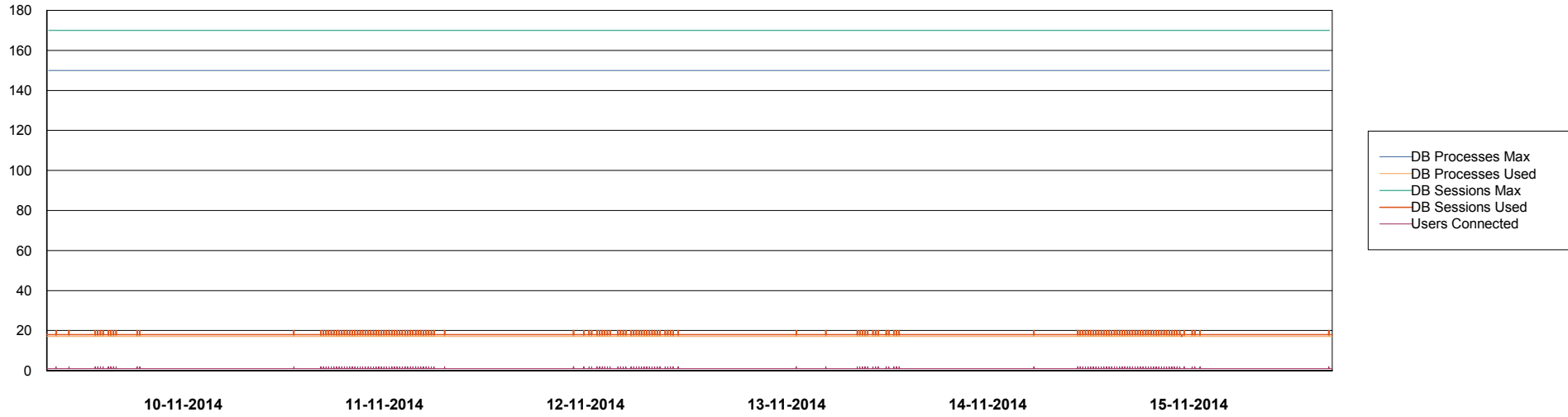
- Session Active

# Weekly SLA Customer Report

Customer NIX\_Production  
Database ID 51



DATABASE PERFORMANCE NIXDB\_Standby





# Weekly SLA Customer Report

Customer NIX\_Production  
Database ID 51



=====  
DATABASE TABLESPACES NIXDB\_BI  
=====

### TOTAL DATABASE SIZE PER TABLESPACE

Date	Tablespace Name	Filesize (Gb)	Usedsize (Gb)	Percentage free
15-11-2014	ABSDATA	22	18	18
	INDX	40	28	30
14-11-2014	ABSDATA	22	18	18
	INDX	40	28	30
13-11-2014	ABSDATA	22	18	18
	INDX	40	28	30
12-11-2014	ABSDATA	22	18	18
	INDX	40	28	30
11-11-2014	ABSDATA	22	18	18
	INDX	40	28	30
10-11-2014	ABSDATA	22	18	18
	INDX	40	28	30
9-11-2014	ABSDATA	22	18	18
	INDX	40	28	30

# Weekly SLA Customer Report

Customer NIX\_Production  
 Database ID 51



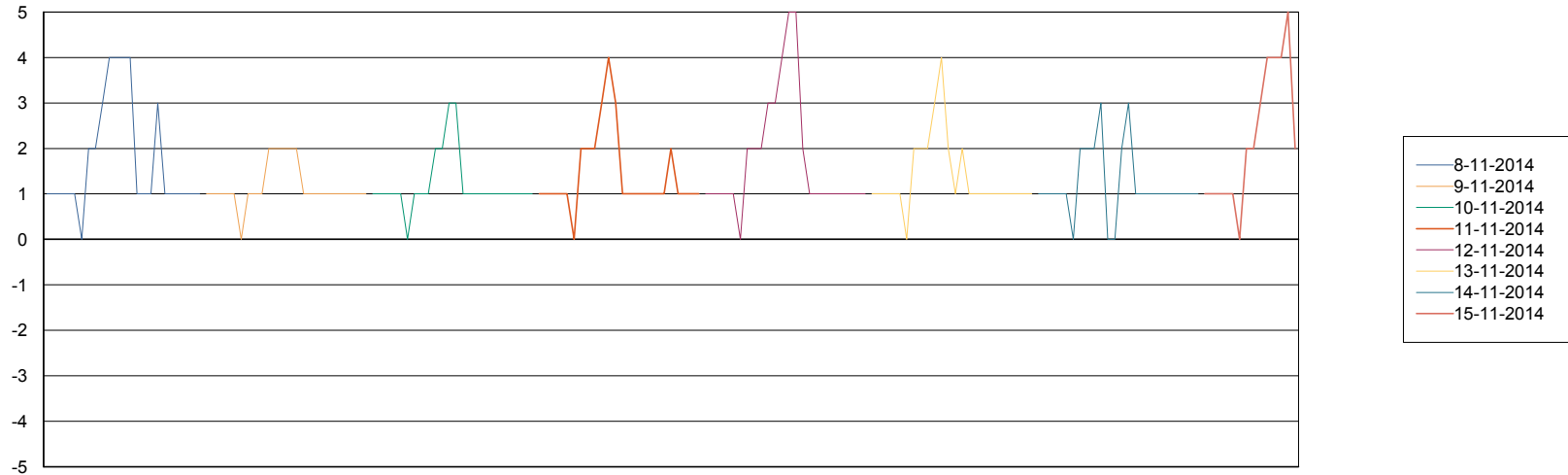
=====  
 DATABASE TABLESPACES NIXDB\_Production  
 =====

TOTAL DATABASE SIZE PER TABLESPACE

Date	Tablespace Name	Filesize (Gb)	Usedsize (Gb)	Percentage free
15-11-2014	ABSDATA	40	29	28
	INDX	97	79	19
14-11-2014	ABSDATA	40	29	28
	INDX	97	79	19
13-11-2014	ABSDATA	40	29	28
	INDX	97	79	19
12-11-2014	ABSDATA	40	29	28
	INDX	97	79	19
11-11-2014	ABSDATA	40	29	28
	INDX	97	79	19
10-11-2014	ABSDATA	40	29	28
	INDX	97	79	19
9-11-2014	ABSDATA	40	29	28
	INDX	97	79	19

=====  
 STANDBY DATABASE HEALTH NIX\_Production  
 =====

Recovery lag for last 7 days



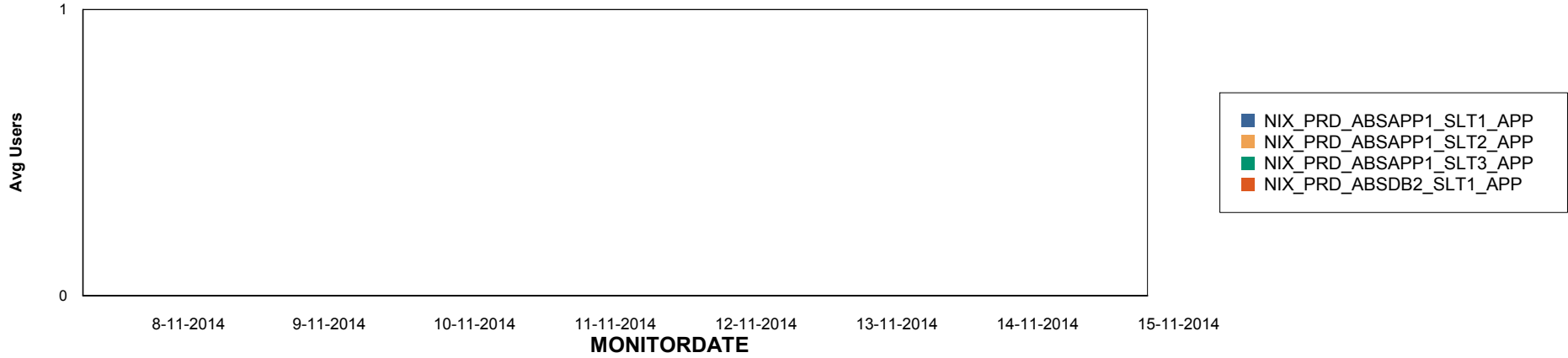
# Weekly SLA Customer Report

Customer NIX\_Production  
Database ID 51

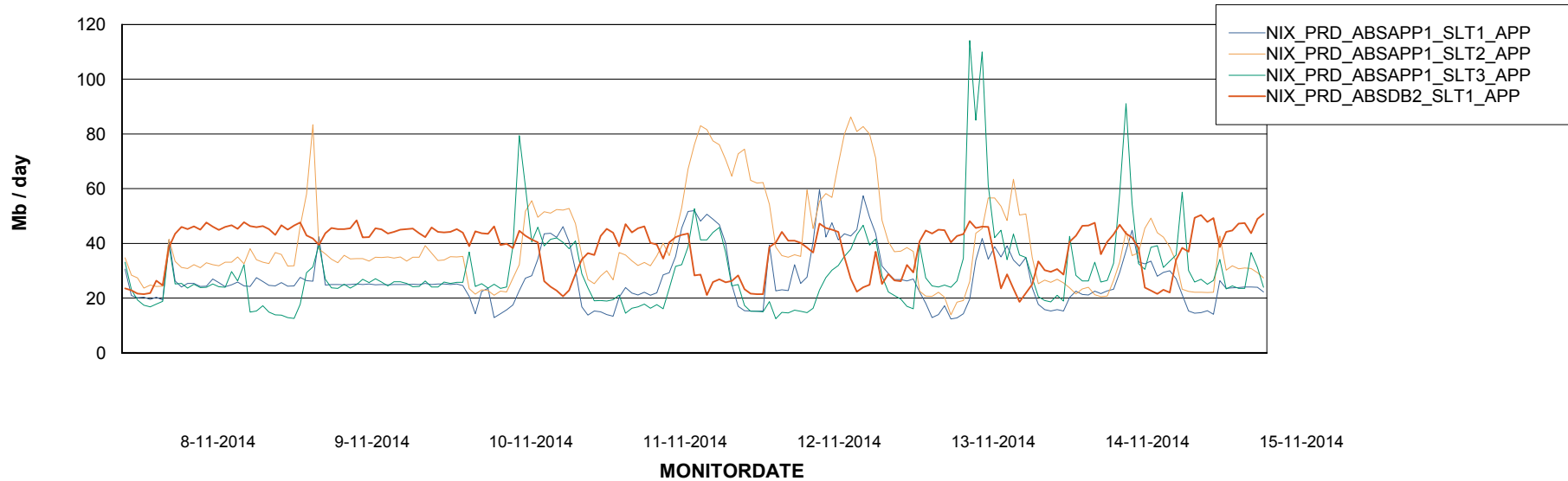


=====  
ABSolute Application Server Services  
=====

## Disaster per ABS Server



## Avg memory used per ABS Server Service



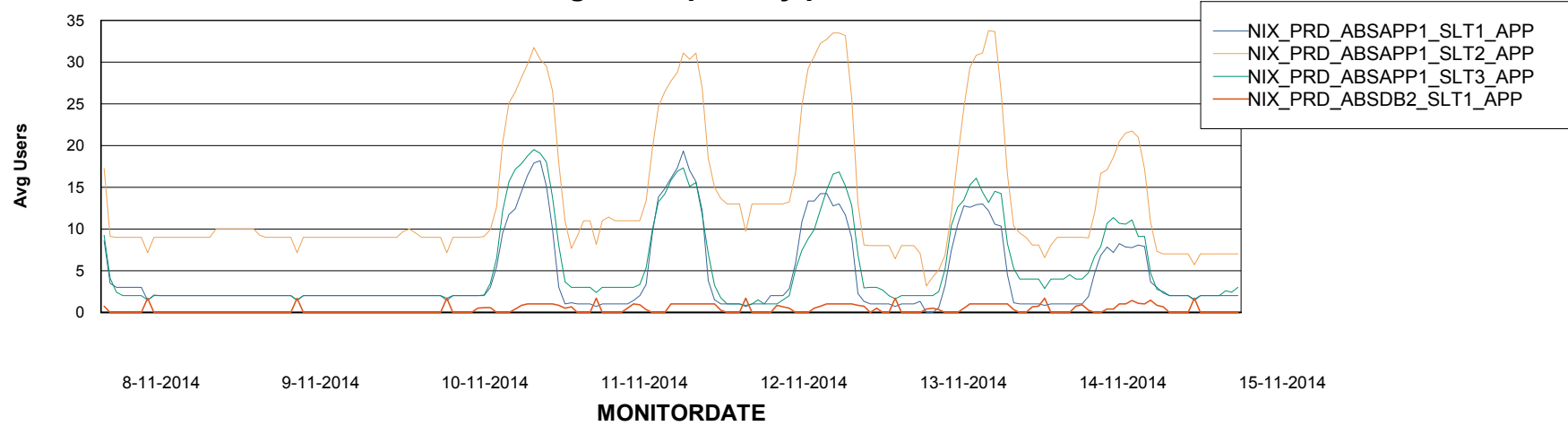
# Weekly SLA Customer Report

Customer NIX\_Production  
Database ID 51



=====  
ABSSolute Application Server Services  
=====

### Avg users per day per ABS server



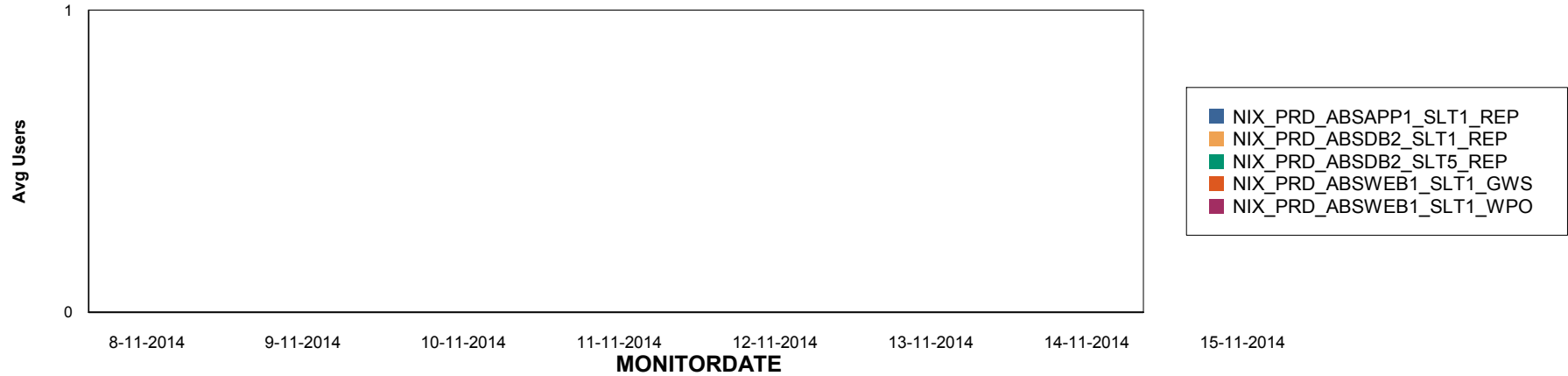
# Weekly SLA Customer Report

Customer NIX\_Production  
Database ID 51

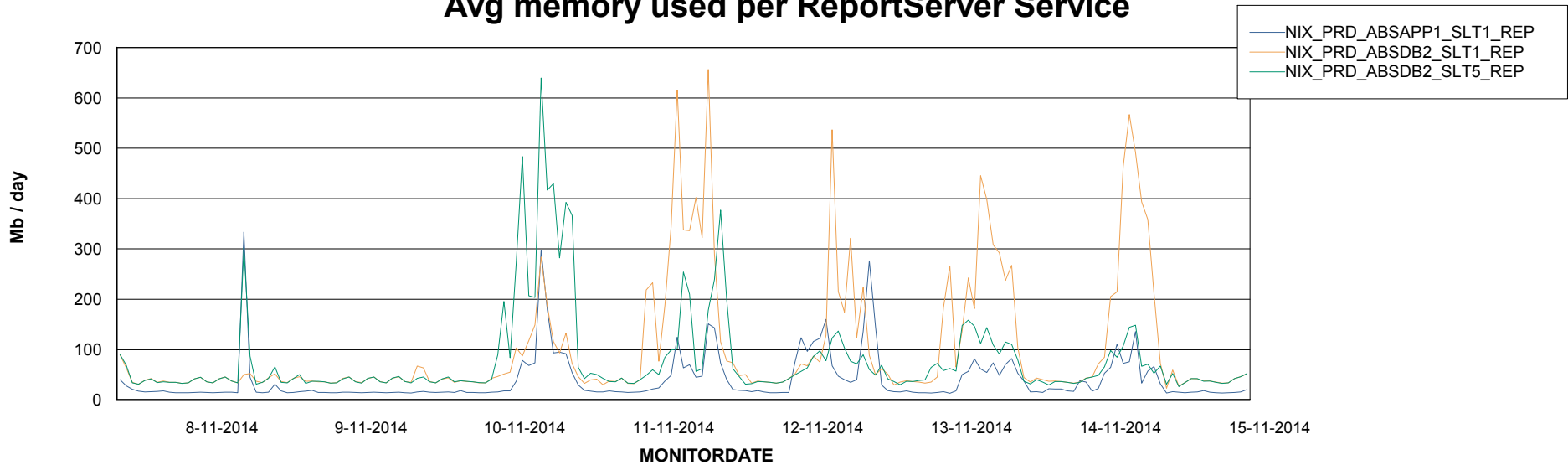


=====  
ABSolute Application ReportServer Services  
=====

## Disaster per ReportServer



## Avg memory used per ReportServer Service



# Weekly SLA Customer Report

Customer NIX\_Production  
Database ID 51



## Disaster per ABS component

