

Weekly SLA Customer Report

Customer RFL_Production
 Database ID 36



=====
 HARDDISK USAGE RFL_PRD_ORACLE1
 =====

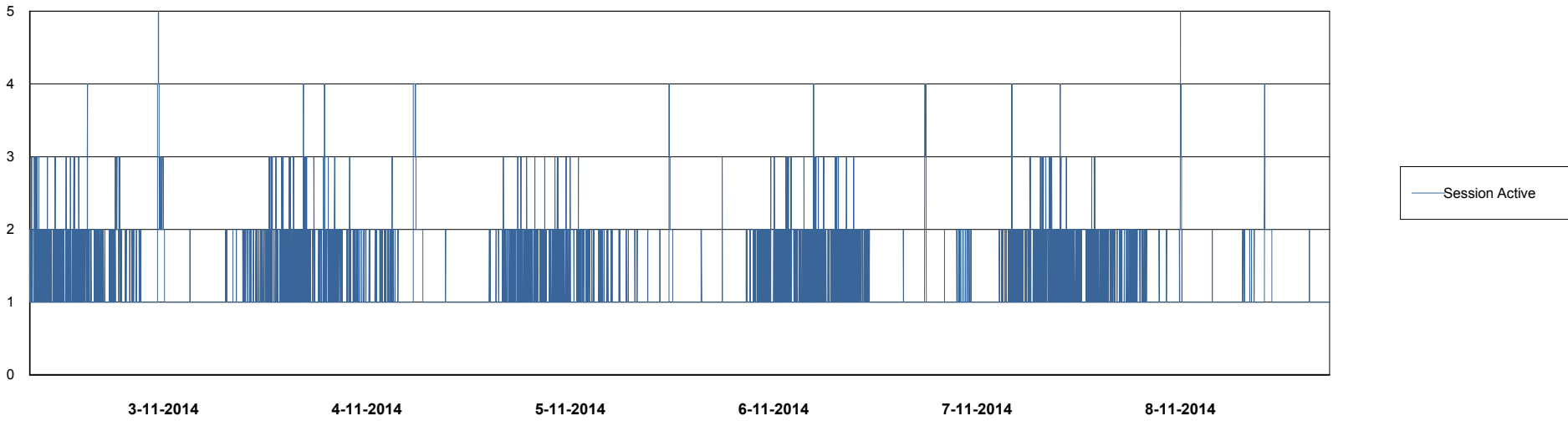
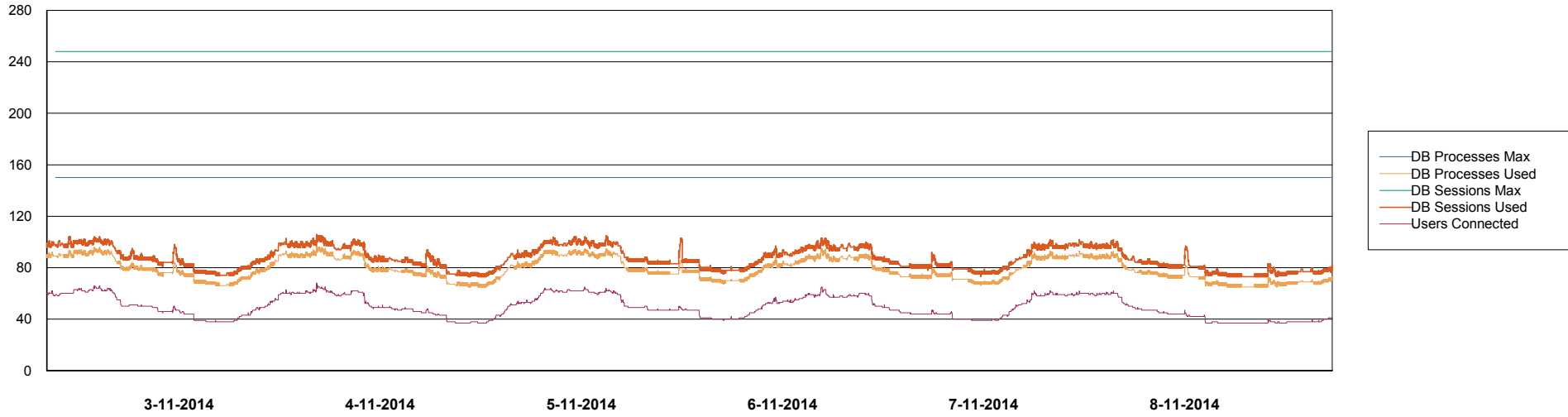
	Total disk space on C (GB)	Free disk space on C (GB)	Total disk space on D (GB)	Free disk space on D (GB)	Total disk space on E (GB)	Free disk space on E (GB)
8-11-2014	279	127	137	99	137	52
7-11-2014	279	127	137	99	137	53
6-11-2014	279	127	137	99	137	55
5-11-2014	279	127	137	100	137	56
4-11-2014	279	128	137	100	137	58
3-11-2014	279	127	137	100	137	59
2-11-2014	279	128	137	100	137	60

Weekly SLA Customer Report

Customer RFL_Production
Database ID 36



DATABASE PERFORMANCE RFLDB_Production



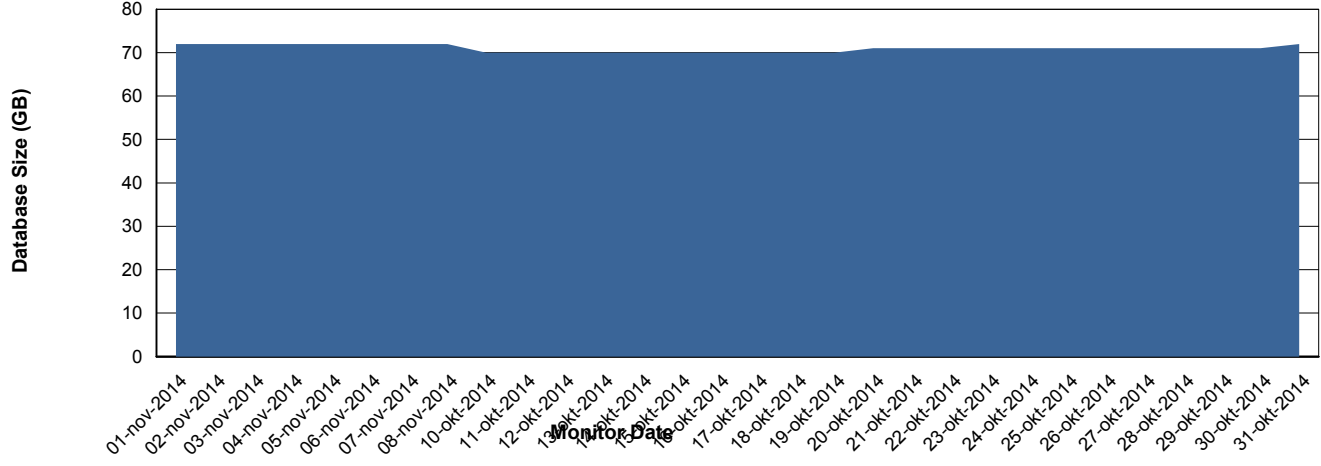
Weekly SLA Customer Report

Customer RFL_Production
 Database ID 36



=====
 DATABASE SIZE RFLDB_Production
 =====

Database growth over last month



=====
 DATABASE TABLESPACES RFLDB_Production
 =====

TOTAL DATABASE SIZE PER TABLESPACE

Date	Tablespace Name	Filesize (Gb)	Usedsize (Gb)	Percentage free
8-11-2014	ABSDATA	22	18	18
	INDX	64	53	17
7-11-2014	ABSDATA	22	18	18
	INDX	64	53	17
6-11-2014	ABSDATA	22	18	18
	INDX	64	53	17
5-11-2014	ABSDATA	22	18	18
	INDX	64	53	17
4-11-2014	ABSDATA	21	18	14
	INDX	63	53	16
3-11-2014	ABSDATA	21	18	14
	INDX	63	53	16
2-11-2014	ABSDATA	21	18	14
	INDX	63	53	16

Weekly SLA Customer Report

Customer RFL_Production
Database ID 36



=====
STANDBY DATABASE HEALTH RFL_Production
=====

Recovery lag for last 7 days

