

Weekly SLA Customer Report

Customer PCO Production
 Database ID 44



=====
 HARDDISK USAGE PCO_PRD_ORACLE1
 =====

	Total disk space on C (GB)	Free disk space on C (GB)	Total disk space on D (GB)	Free disk space on D (GB)
8-11-2014	279	218	838	208
7-11-2014	279	218	838	210
6-11-2014	279	218	838	213
5-11-2014	279	218	838	216
4-11-2014	279	218	838	220
3-11-2014	279	218	838	145
2-11-2014	279	218	838	68

=====
 HARDDISK USAGE PCO_PRD_ORACLE2
 =====

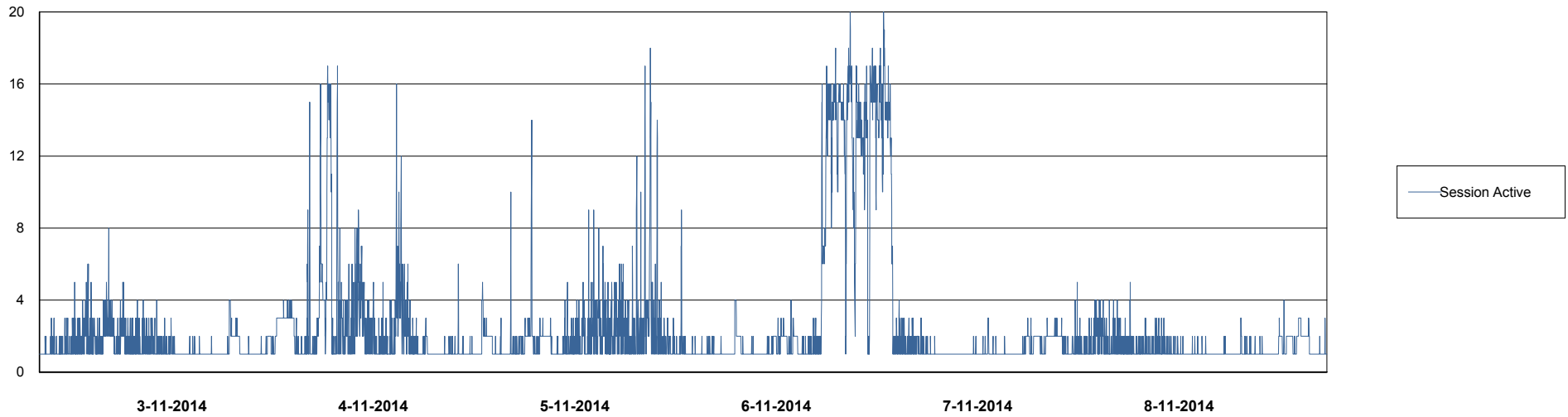
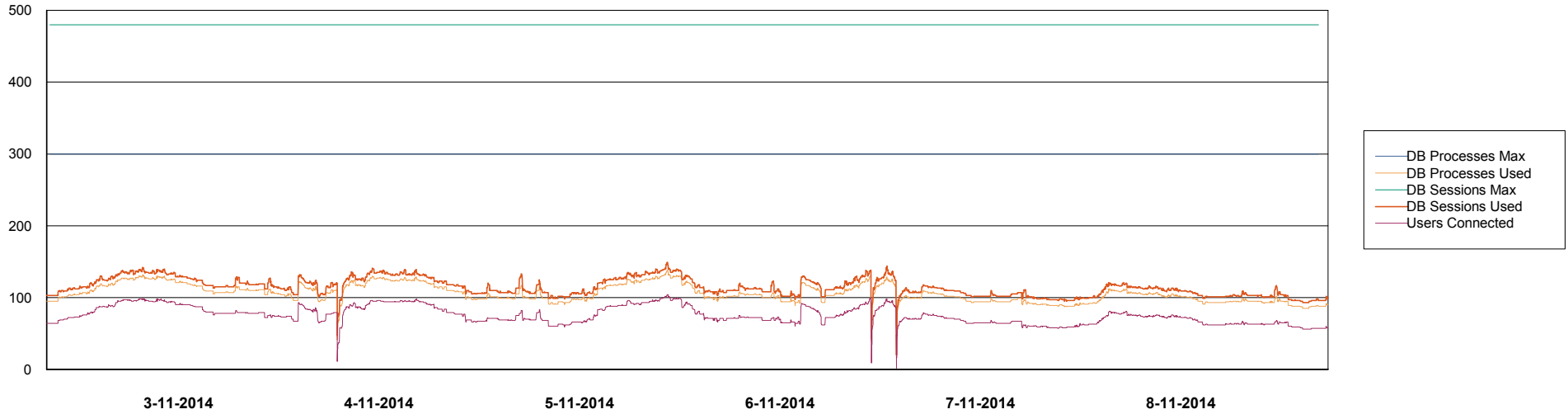
	Total disk space on C (GB)	Free disk space on C (GB)	Total disk space on D (GB)	Free disk space on D (GB)
8-11-2014	279	223	838	534
7-11-2014	279	224	838	536
6-11-2014	279	223	838	539
5-11-2014	279	223	838	542
4-11-2014	279	223	838	545
3-11-2014	279	223	838	548
2-11-2014	279	224	838	550

Weekly SLA Customer Report

Customer PCO Production
Database ID 44



DATABASE PERFORMANCE PCODB_Production

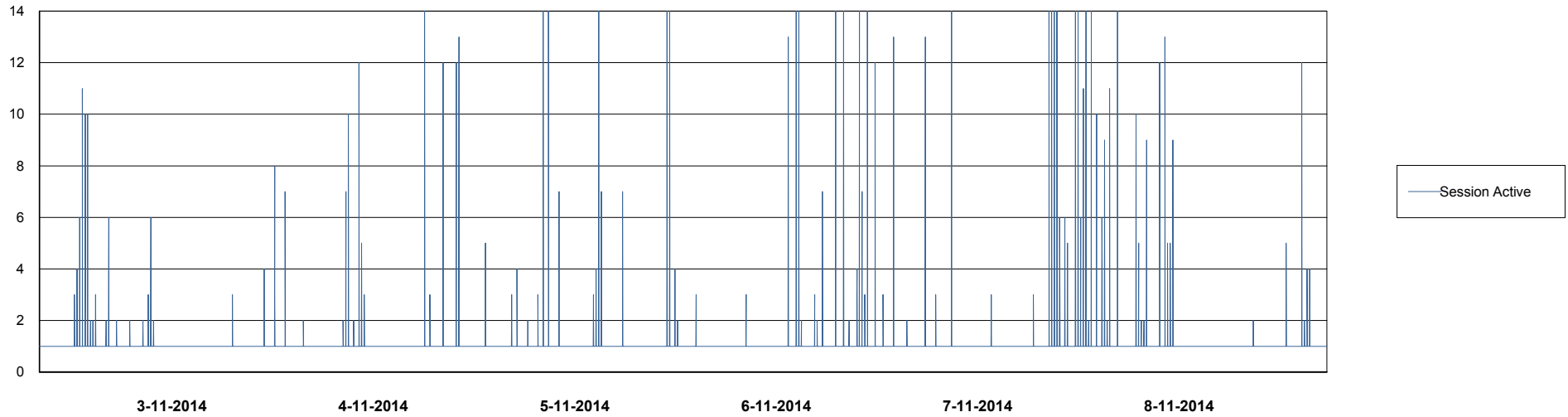
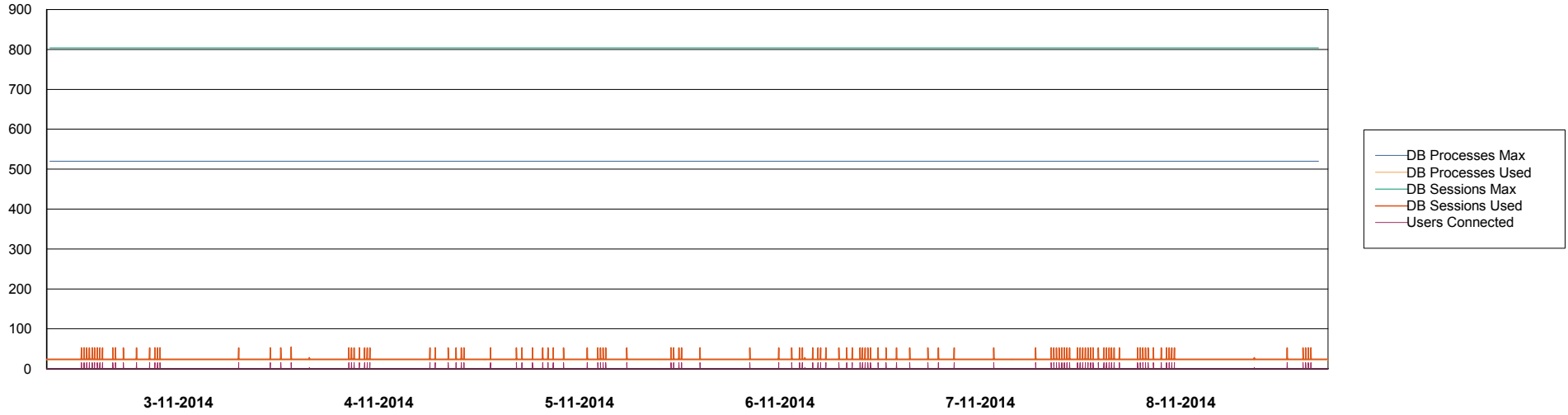


Weekly SLA Customer Report

Customer PCO Production
Database ID 44



DATABASE PERFORMANCE PCODB_Standby



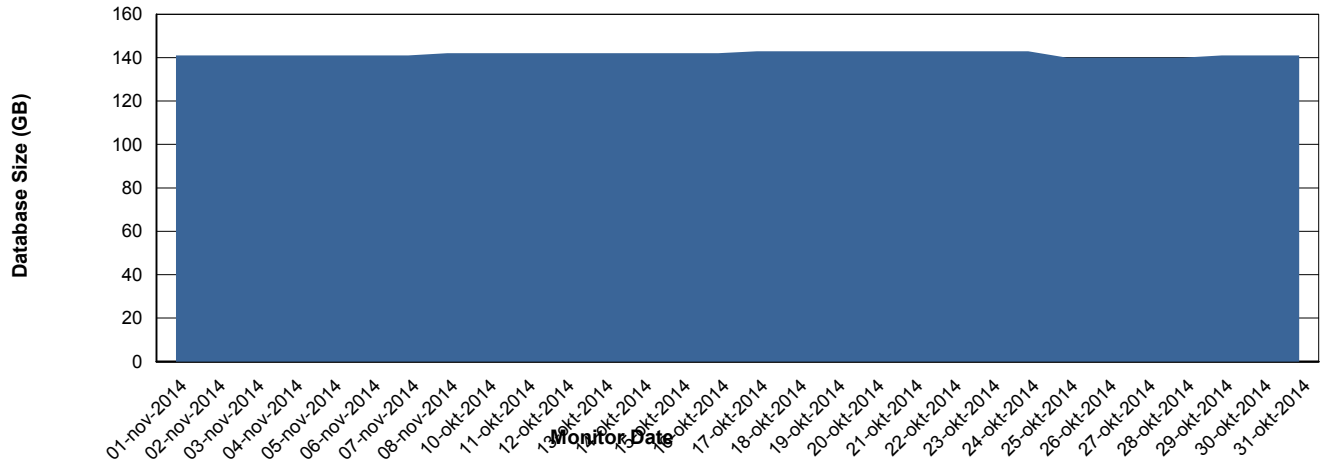
Weekly SLA Customer Report

Customer PCO Production
 Database ID 44



=====
 DATABASE SIZE PCODB_Production
 =====

Database growth over last month



=====
 DATABASE TABLESPACES PCODB_Production
 =====

TOTAL DATABASE SIZE PER TABLESPACE

Date	Tablespace Name	Filesize (Gb)	Usedsize (Gb)	Percentage free
8-11-2014	ABSDATA	72	59	18
	INDX	99	81	18
7-11-2014	ABSDATA	72	59	18
	INDX	99	81	18
6-11-2014	ABSDATA	72	59	18
	INDX	99	81	18
5-11-2014	ABSDATA	72	58	19
	INDX	99	81	18
4-11-2014	ABSDATA	72	58	19
	INDX	99	81	18
3-11-2014	ABSDATA	72	58	19
	INDX	99	81	18
2-11-2014	ABSDATA	72	58	19
	INDX	99	81	18

Weekly SLA Customer Report

Customer PCO Production
Database ID 44



=====
STANDBY DATABASE HEALTH PCO Production
=====

Recovery lag for last 7 days

