

## Weekly SLA Customer Report

Customer     JWR Production  
 Database ID    43



=====  
 HARDDISK USAGE    JWR\_PRD\_JWR-ABS-01  
 =====

	Used disk space on / (GB)	Total disk space on / (GB)	Free disk space on / (GB)
8-11-2014	27	49	20
7-11-2014	27	49	20
6-11-2014	27	49	20
5-11-2014	27	49	20
4-11-2014	27	49	20
3-11-2014	27	49	20
2-11-2014	27	49	20

=====  
 HARDDISK USAGE    JWR\_PRD\_JWR-ABS-02  
 =====

	Used disk space on / (GB)	Total disk space on / (GB)	Free disk space on / (GB)
8-11-2014	26	49	21
7-11-2014	26	49	21
6-11-2014	26	49	21
5-11-2014	26	49	21
4-11-2014	26	49	21
3-11-2014	26	49	21
2-11-2014	26	49	21

## Weekly SLA Customer Report

Customer      JWR Production  
 Database ID    43



=====  
 HARDDISK USAGE    JWR\_PRD\_JWR-ODB-01  
 =====

	Used disk space on / (GB)	Total disk space on / (GB)	Free disk space on / (GB)
8-11-2014	74	90	11
7-11-2014	75	90	11
6-11-2014	75	90	11
5-11-2014	75	90	11
4-11-2014	75	90	11
3-11-2014	75	90	11
2-11-2014	74	90	11

=====  
 HARDDISK USAGE    JWR\_PRD\_JWR-ODB-02  
 =====

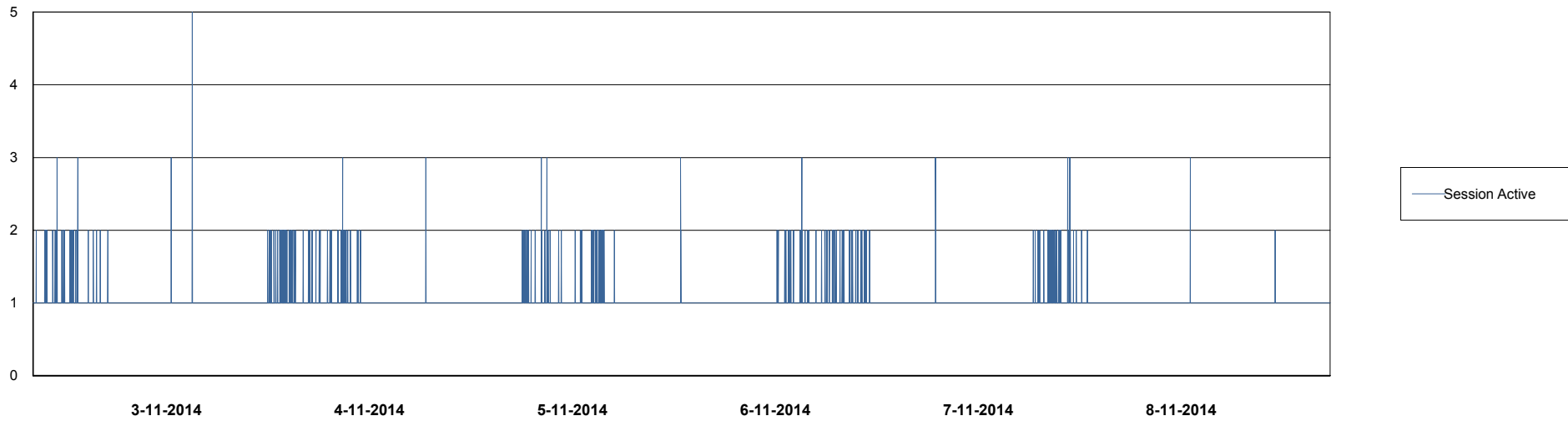
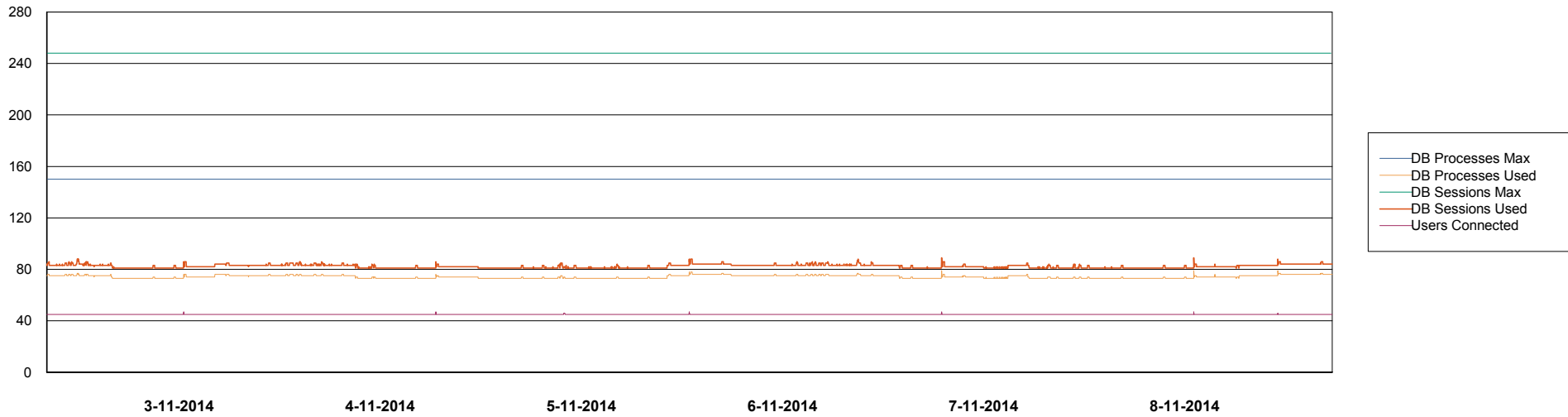
	Used disk space on / (GB)	Total disk space on / (GB)	Free disk space on / (GB)
8-11-2014	92	138	39
7-11-2014	92	138	39
6-11-2014	92	138	39
5-11-2014	92	138	39
4-11-2014	92	138	39
3-11-2014	92	138	39
2-11-2014	91	138	39

# Weekly SLA Customer Report

Customer JWR Production  
Database ID 43



DATABASE PERFORMANCE JWRDB\_Production



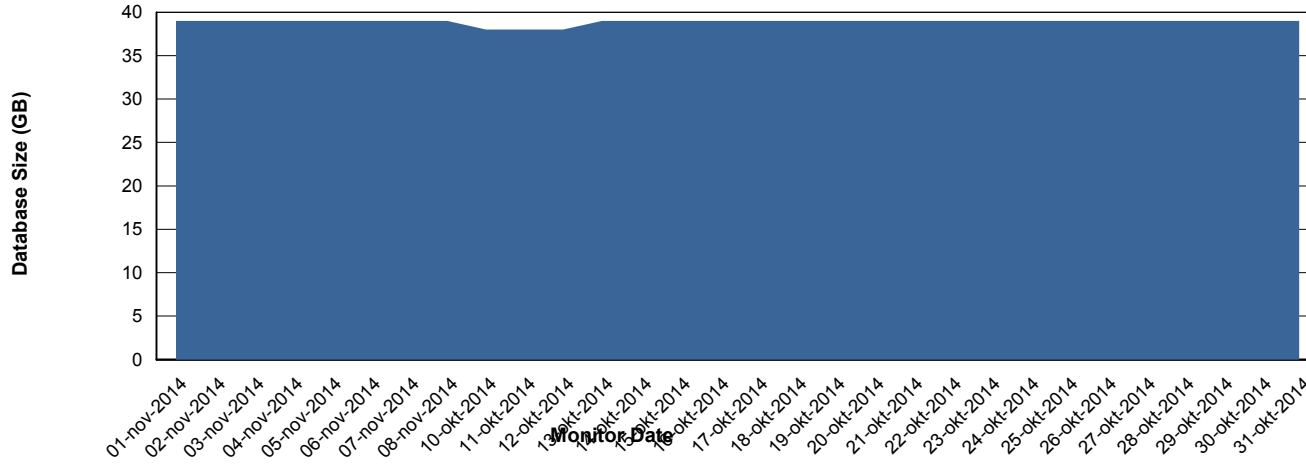
# Weekly SLA Customer Report

Customer JWR Production  
 Database ID 43



=====  
 DATABASE SIZE JWRDB\_Production  
 =====

## Database growth over last month



=====  
 DATABASE TABLESPACES JWRDB\_Production  
 =====

### TOTAL DATABASE SIZE PER TABLESPACE

Date	Tablespace Name	Filesize (Gb)	Usedsize (Gb)	Percentage free
8-11-2014	ABSDATA	15	11	27
	INDX	32	27	16
7-11-2014	ABSDATA	15	11	27
	INDX	32	27	16
6-11-2014	ABSDATA	15	11	27
	INDX	32	27	16
5-11-2014	ABSDATA	15	11	27
	INDX	32	27	16
4-11-2014	ABSDATA	15	11	27
	INDX	32	27	16
3-11-2014	ABSDATA	15	11	27
	INDX	32	27	16
2-11-2014	ABSDATA	15	11	27
	INDX	32	27	16

## Weekly SLA Customer Report

---

Customer     JWR Production  
Database ID   43



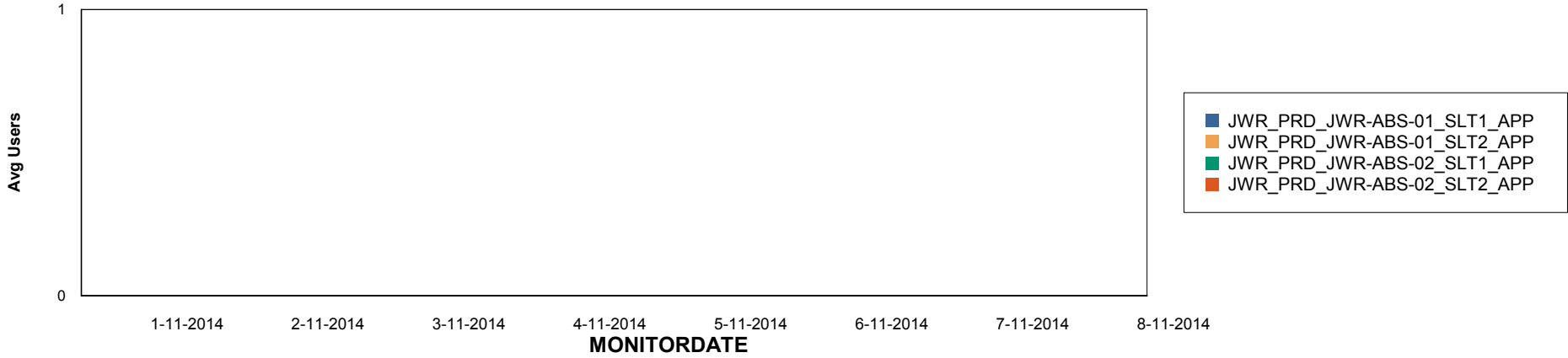
# Weekly SLA Customer Report

Customer JWR Production  
Database ID 43

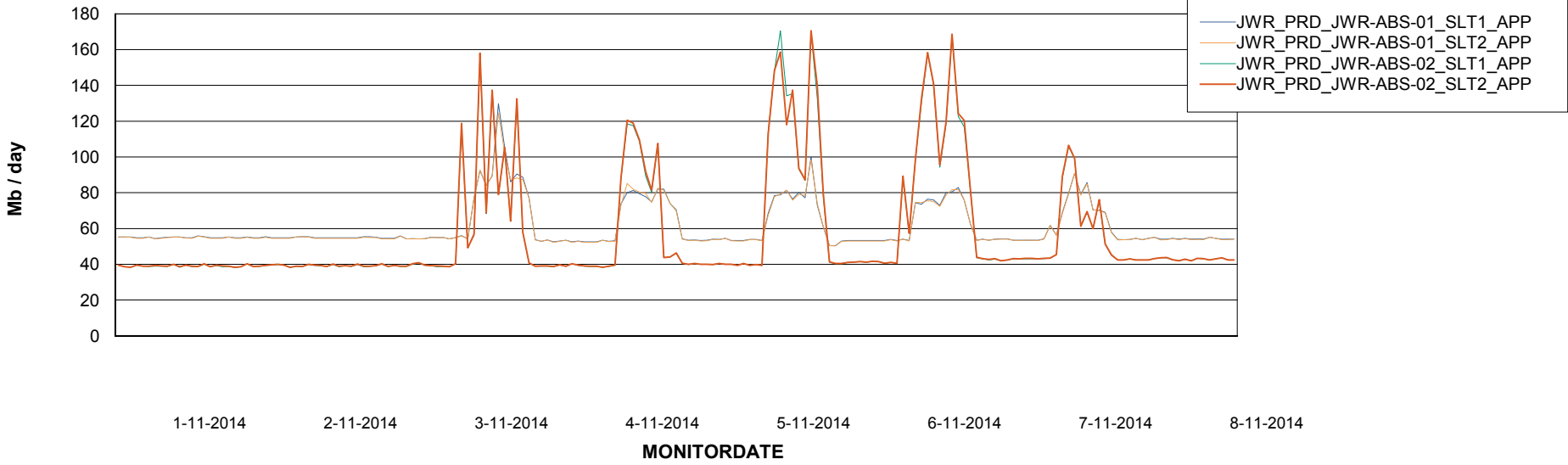


=====  
ABSolute Application Server Services  
=====

## Disaster per ABS Server



## Avg memory used per ABS Server Service



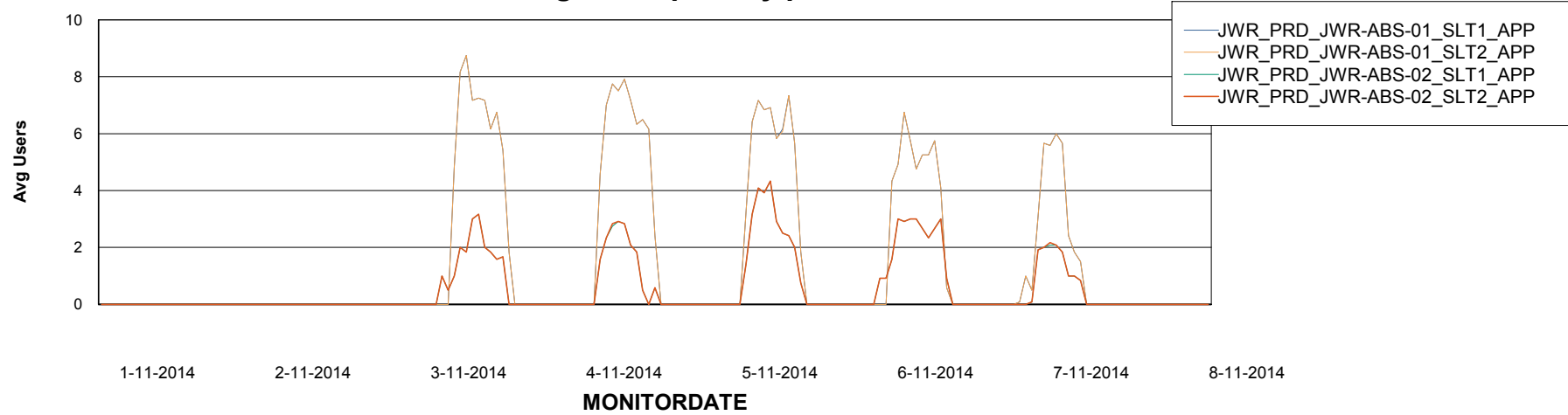
# Weekly SLA Customer Report

Customer JWR Production  
Database ID 43



=====  
ABSolute Application Server Services  
=====

### Avg users per day per ABS server



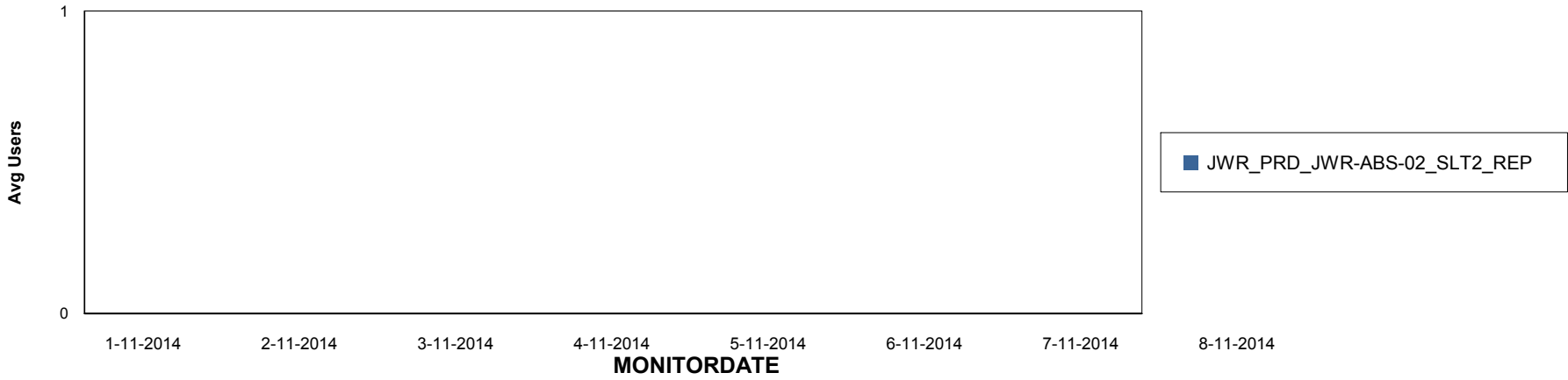
# Weekly SLA Customer Report

Customer JWR Production  
Database ID 43

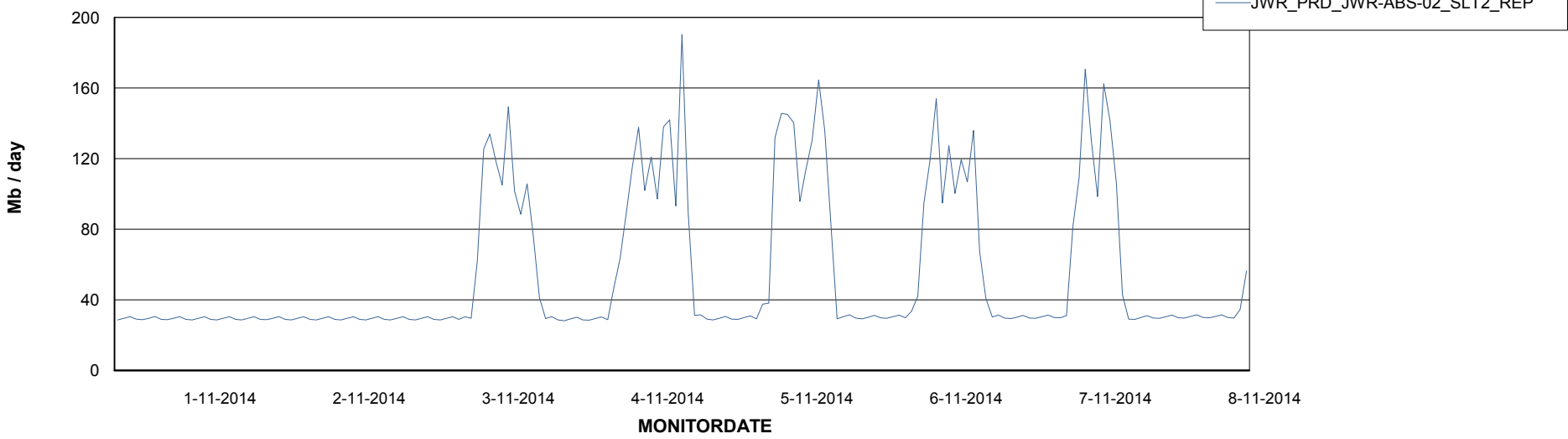


=====  
ABSolute Application ReportServer Services  
=====

## Disaster per ReportServer



## Avg memory used per ReportServer Service



# Weekly SLA Customer Report

Customer JWR Production  
Database ID 43



## Disaster per ABS component

