

Weekly SLA Customer Report

Customer WBL_Production
Database ID 40

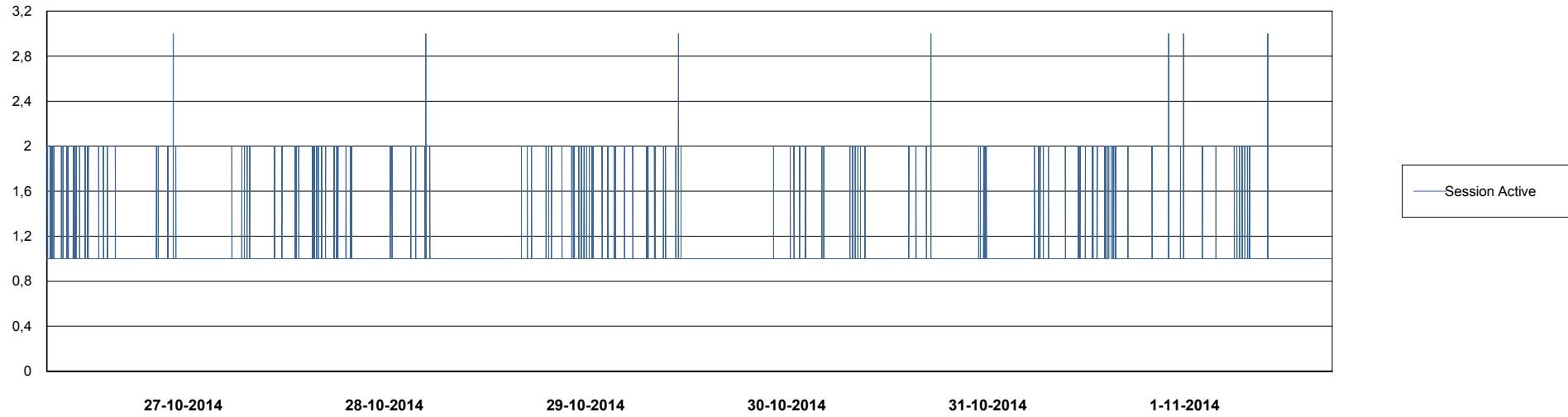
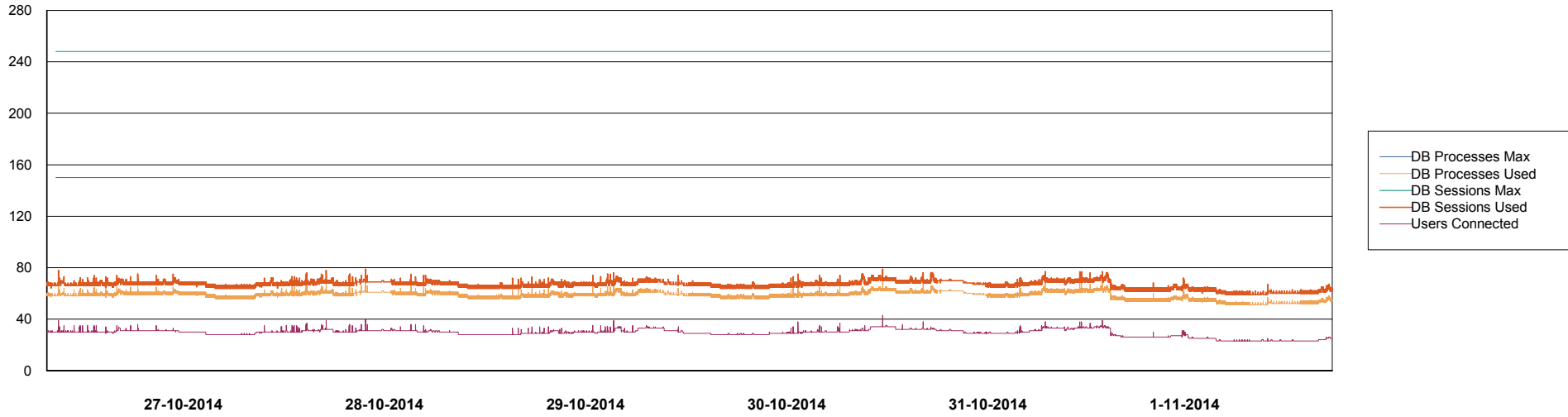


Weekly SLA Customer Report

Customer WBL_Production
Database ID 40



DATABASE PERFORMANCE WBLDB_Production

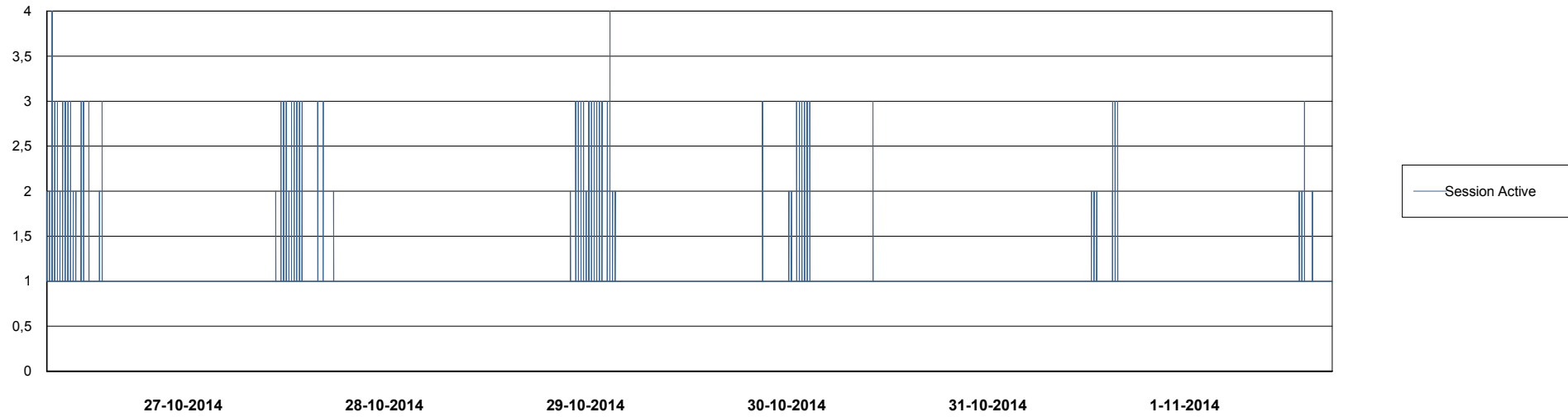
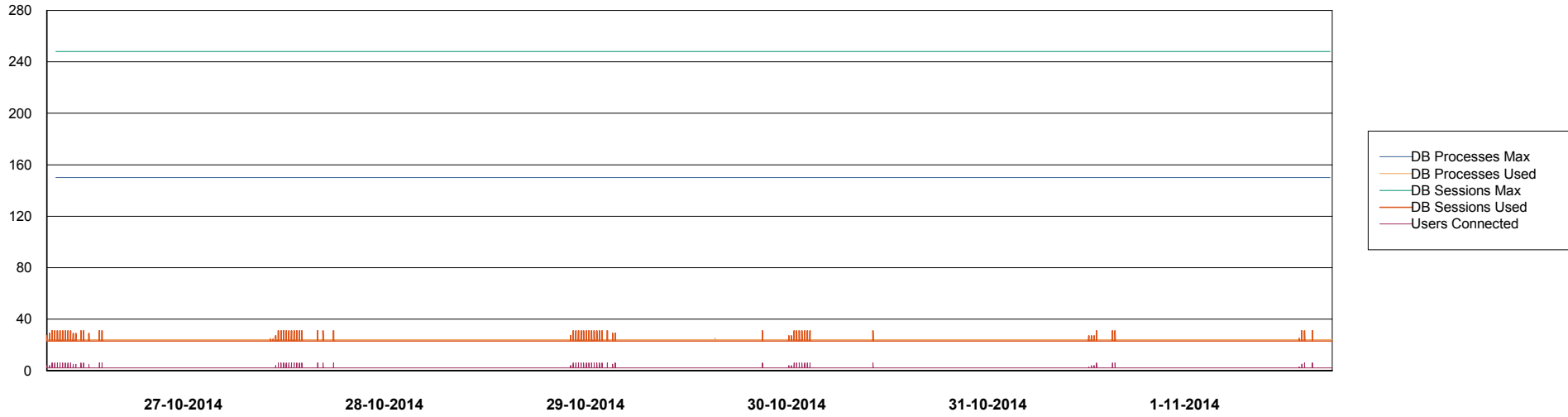


Weekly SLA Customer Report

Customer WBL_Production
Database ID 40



DATABASE PERFORMANCE WBLDB_Standby



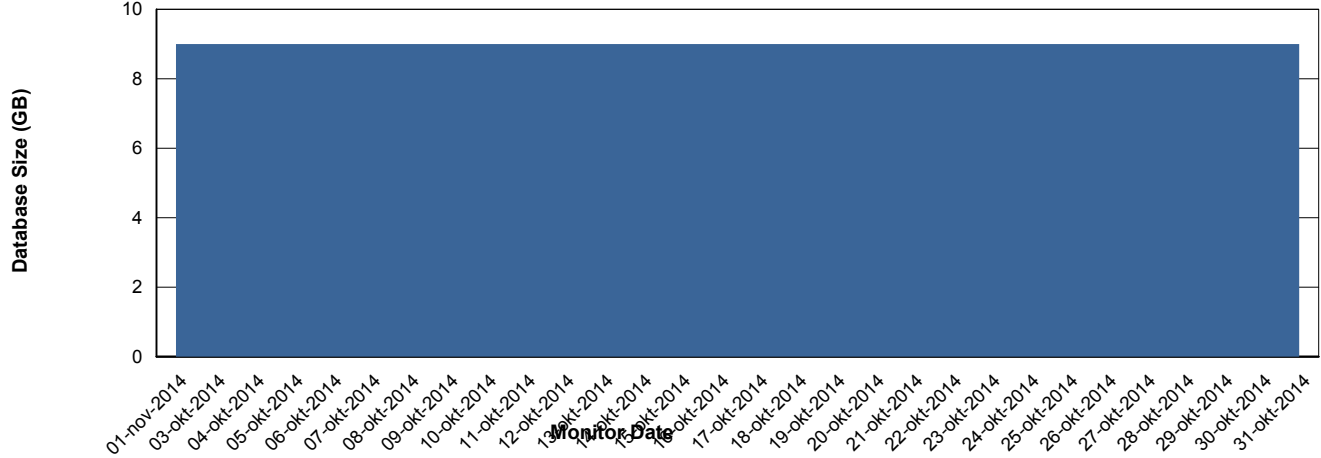
Weekly SLA Customer Report

Customer WBL_Production
 Database ID 40



=====
 DATABASE SIZE WBLDB_Production
 =====

Database growth over last month



=====
 DATABASE TABLESPACES WBLDB_Production
 =====

TOTAL DATABASE SIZE PER TABLESPACE

Date	Tablespace Name	Filesize (Gb)	Usedsize (Gb)	Percentage free
1-11-2014	ABSDATA	6	4	33
	INDX	5	4	20
31-10-2014	ABSDATA	6	4	33
	INDX	5	4	20
30-10-2014	ABSDATA	6	4	33
	INDX	5	4	20
29-10-2014	ABSDATA	6	4	33
	INDX	5	4	20
28-10-2014	ABSDATA	6	4	33
	INDX	5	4	20
27-10-2014	ABSDATA	6	4	33
	INDX	5	4	20
26-10-2014	ABSDATA	6	4	33
	INDX	5	4	20

Weekly SLA Customer Report

Customer WBL_Production
Database ID 40



=====
STANDBY DATABASE HEALTH WBL_Production
=====

Recovery lag for last 7 days

