

Weekly SLA Customer Report

Customer RFL_Production
Database ID 36



=====
HARDDISK USAGE RFL_PRD_ORACLE1
=====

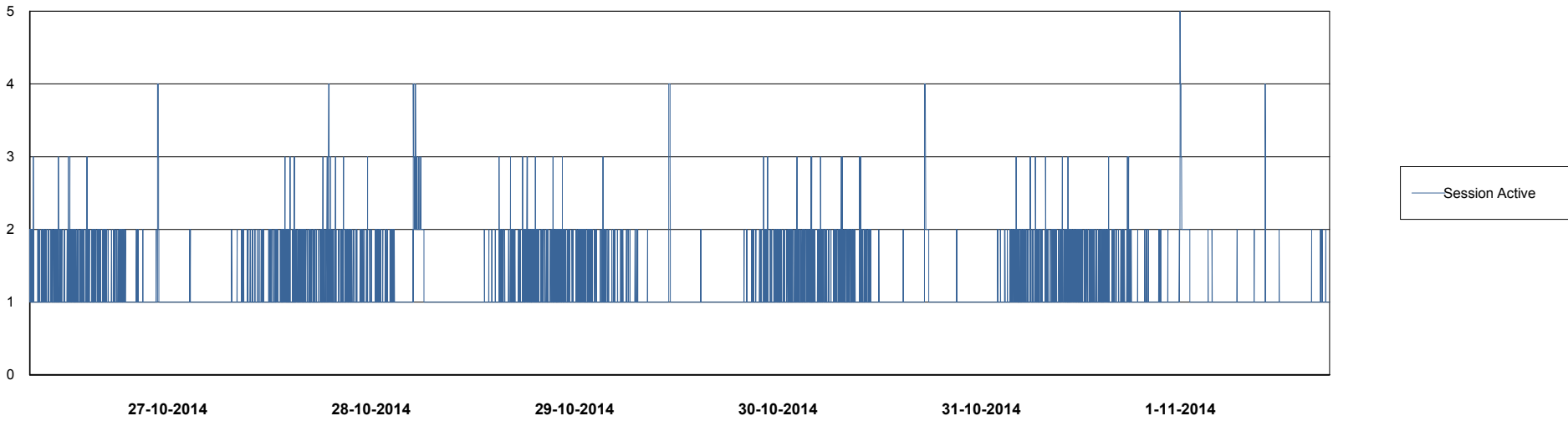
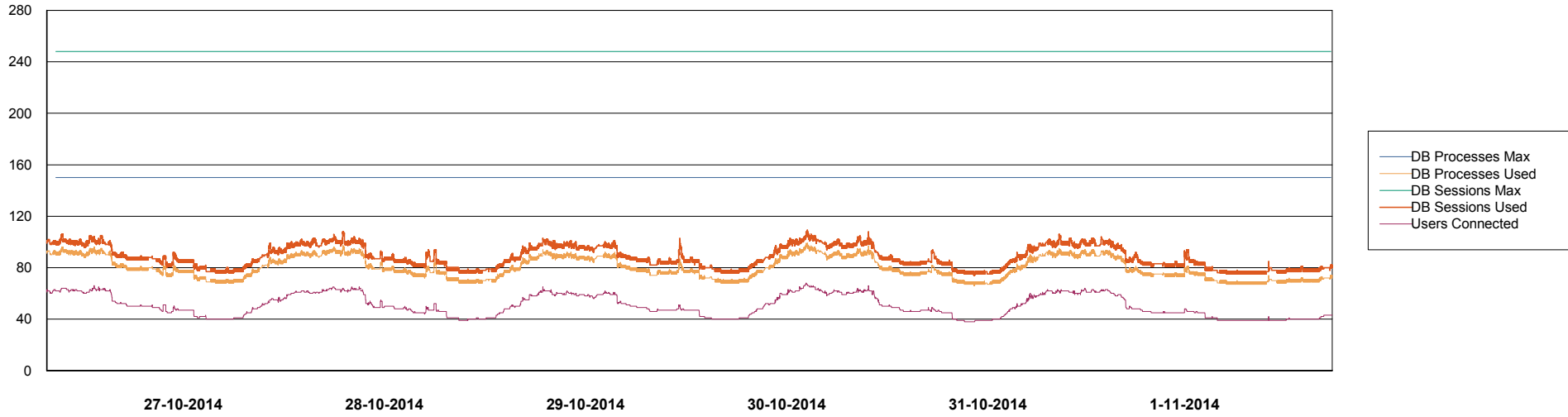
	Total disk space on C (GB)	Free disk space on C (GB)	Total disk space on D (GB)	Free disk space on D (GB)	Total disk space on E (GB)	Free disk space on E (GB)
1-11-2014	279	128	137	100	137	60
31-10-2014	279	128	137	100	137	61
30-10-2014	279	128	137	100	137	61
29-10-2014	279	128	137	100	137	62
28-10-2014	279	128	137	100	137	63
27-10-2014	279	127	137	100	137	63
26-10-2014	279	128	137	100	137	64

Weekly SLA Customer Report

Customer RFL_Production
Database ID 36



DATABASE PERFORMANCE RFLDB_Production



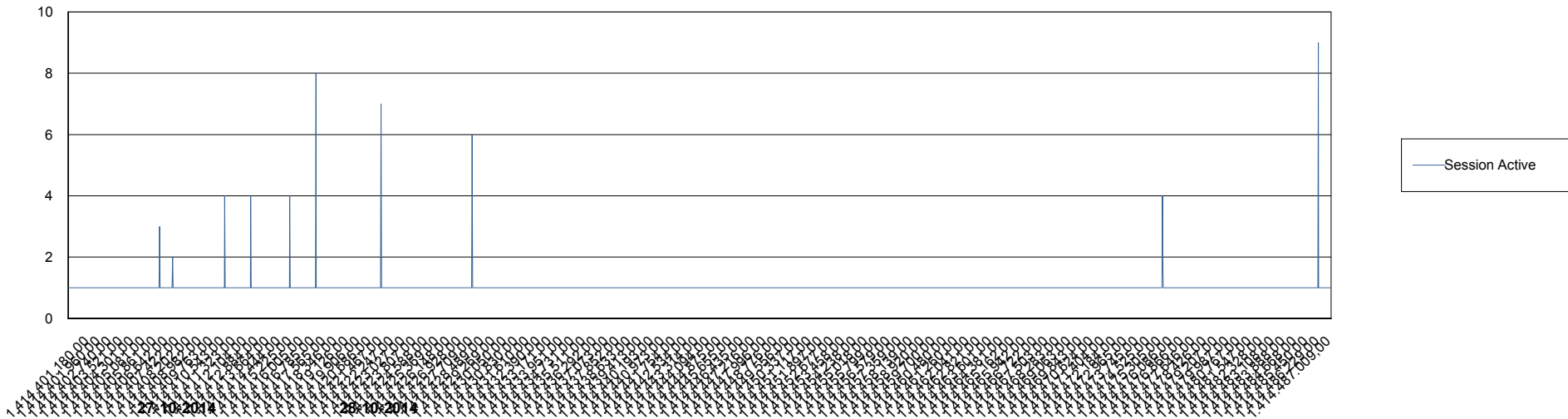
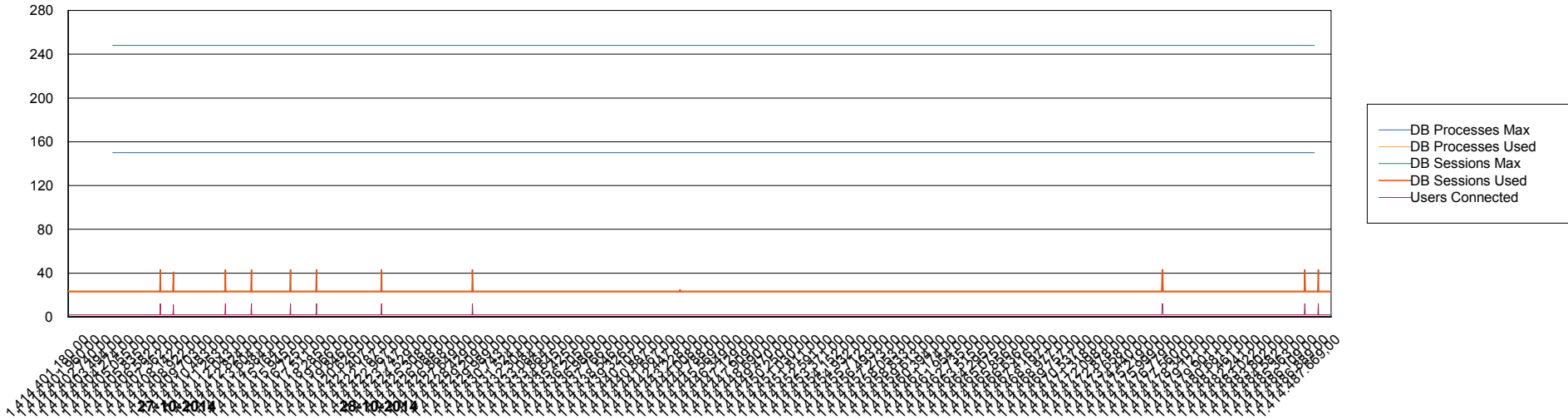
Weekly SLA Customer Report

Customer RFL_Production
Database ID 36



DATABASE PERFORMANCE

RFLDB_Standby



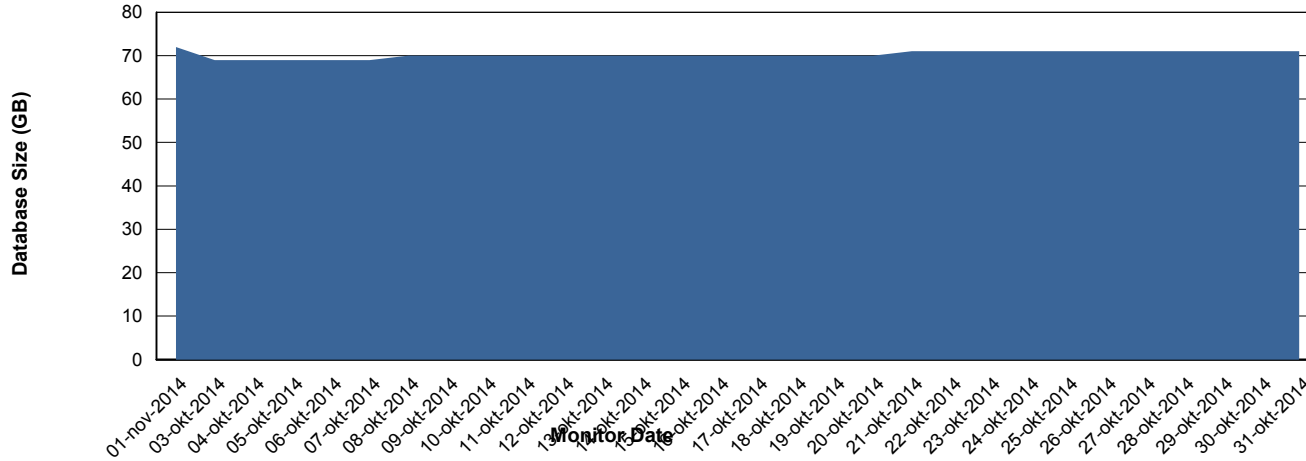
Weekly SLA Customer Report

Customer RFL_Production
 Database ID 36



=====
 DATABASE SIZE RFLDB_Production
 =====

Database growth over last month



=====
 DATABASE TABLESPACES RFLDB_Production
 =====

TOTAL DATABASE SIZE PER TABLESPACE

Date	Tablespace Name	Filesize (Gb)	Usedsize (Gb)	Percentage free
1-11-2014	ABSDATA	21	18	14
	INDX	63	53	16
31-10-2014	ABSDATA	21	18	14
	INDX	63	53	16
30-10-2014	ABSDATA	21	18	14
	INDX	63	53	16
29-10-2014	ABSDATA	21	18	14
	INDX	63	53	16
28-10-2014	ABSDATA	21	18	14
	INDX	63	53	16
27-10-2014	ABSDATA	21	18	14
	INDX	63	52	17
26-10-2014	ABSDATA	21	18	14
	INDX	63	52	17

Weekly SLA Customer Report

Customer RFL_Production
Database ID 36



=====
STANDBY DATABASE HEALTH RFL_Production
=====

Recovery lag for last 7 days

