

Weekly SLA Customer Report

Customer PHS_Production
 Database ID 47



=====
 HARDDISK USAGE PHS_BI_GCAB779a
 =====

	Total disk space on C (GB)	Free disk space on C (GB)	Total disk space on D (GB)	Free disk space on D (GB)
1-11-2014	150	54	150	56
31-10-2014	150	54	150	56
30-10-2014	150	54	150	56
29-10-2014	150	54	150	56
28-10-2014	150	54	150	56
27-10-2014	150	54	150	56
26-10-2014	150	54	150	56

=====
 HARDDISK USAGE PHS_PRD_GCAB775a
 =====

	Total disk space on C (GB)	Free disk space on C (GB)	Total disk space on D (GB)	Free disk space on D (GB)	Total disk space on F (GB)	Free disk space on F (GB)
1-11-2014	220	65	75	24	80	62
31-10-2014	220	65	75	25	80	63
30-10-2014	220	65	75	25	80	63
29-10-2014	220	65	75	25	80	63
28-10-2014	220	65	75	26	80	63
27-10-2014	220	65	75	27	80	64
26-10-2014	220	65	75	29	80	63

Weekly SLA Customer Report

Customer PHS_Production
 Database ID 47



=====
 HARDDISK USAGE PHS_PRD_GCAB814a
 =====

	Total disk space on C (GB)	Free disk space on C (GB)	Total disk space on D (GB)	Free disk space on D (GB)
1-11-2014	200	70	75	25
31-10-2014	200	70	75	25
30-10-2014	200	70	75	26
29-10-2014	200	70	75	26
28-10-2014	200	70	75	27
27-10-2014	200	70	75	28
26-10-2014	200	70	75	30

=====
 HARDDISK USAGE PHS_TST_GCAB778a
 =====

	Total disk space on C (GB)	Free disk space on C (GB)	Total disk space on D (GB)	Free disk space on D (GB)
1-11-2014	150	35	75	49
31-10-2014	150	35	75	49
30-10-2014	150	35	75	49
29-10-2014	150	35	75	49
28-10-2014	150	35	75	49
27-10-2014	150	35	75	49
26-10-2014	150	35	75	49

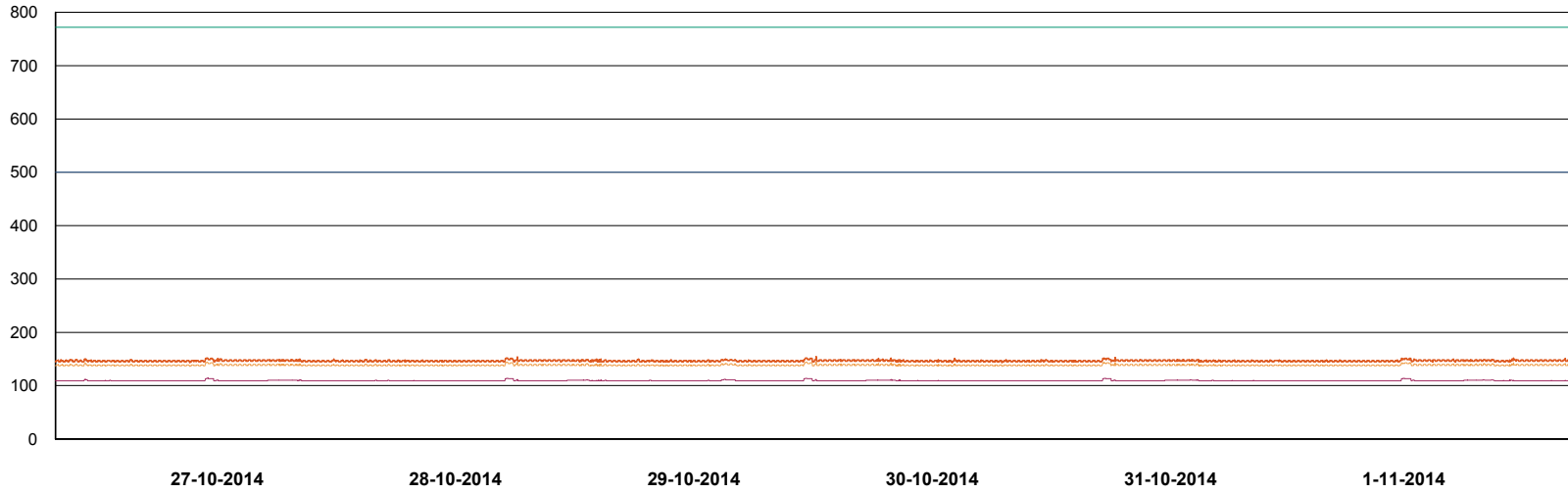
Weekly SLA Customer Report

Customer PHS_Production
Database ID 47

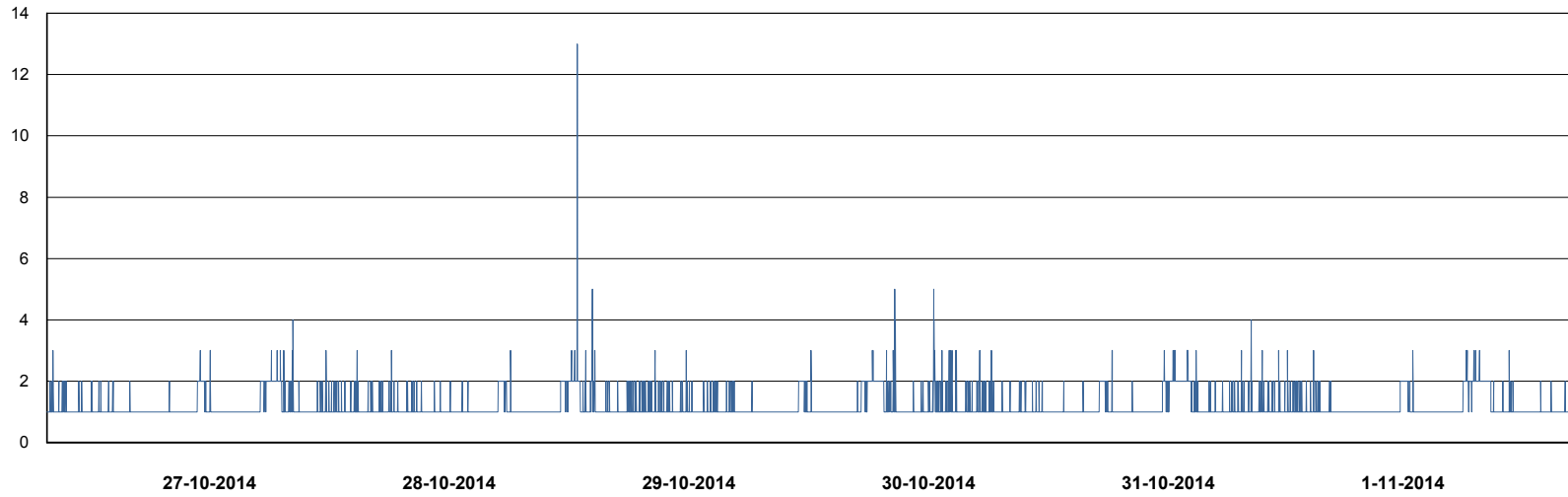


DATABASE PERFORMANCE

PHSDB_Production



- DB Processes Max
- DB Processes Used
- DB Sessions Max
- DB Sessions Used
- Users Connected



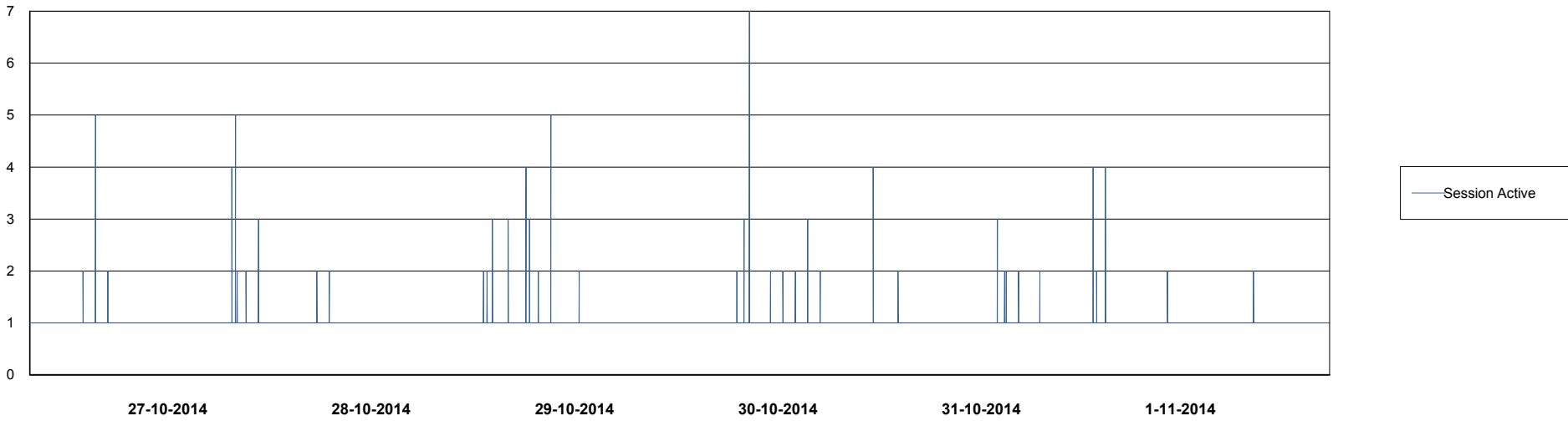
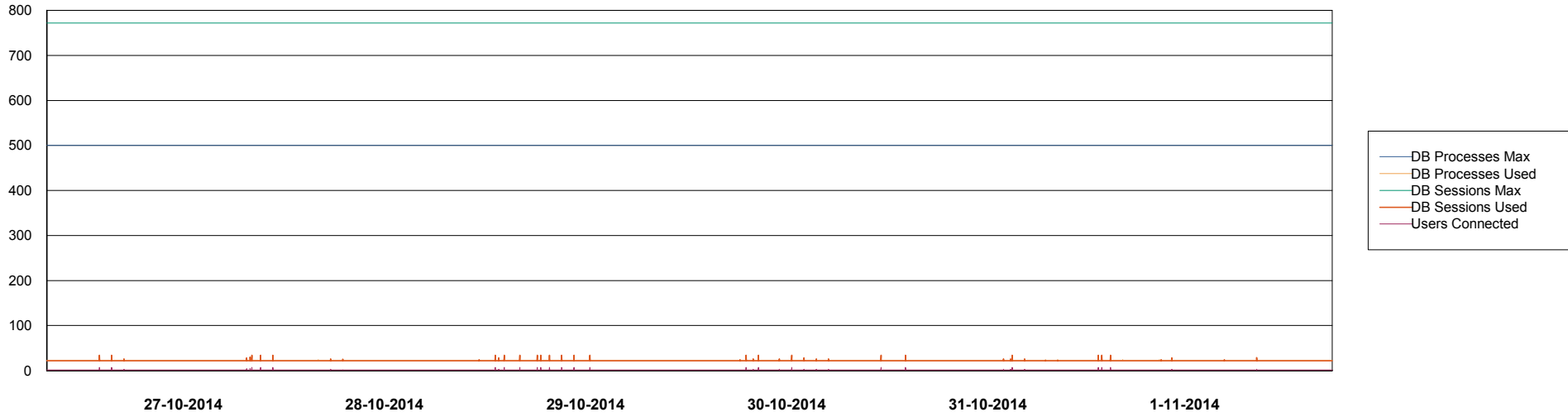
- Session Active

Weekly SLA Customer Report

Customer PHS_Production
Database ID 47



DATABASE PERFORMANCE PHSDB_Standby



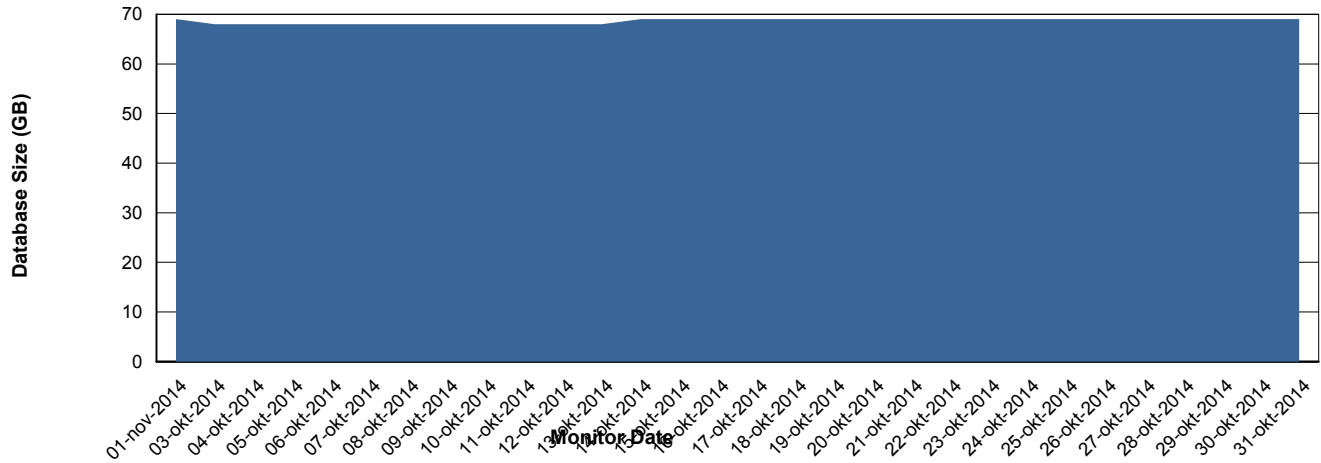
Weekly SLA Customer Report

Customer PHS_Production
 Database ID 47



=====
 DATABASE SIZE PHSDB_Production
 =====

Database growth over last month



=====
 DATABASE TABLESPACES PHSDB_Production
 =====

TOTAL DATABASE SIZE PER TABLESPACE

Date	Tablespace Name	Filesize (Gb)	Usedsize (Gb)	Percentage free
1-11-2014	ABSDATA	81	68	16
	INDX	1	0	100
31-10-2014	ABSDATA	81	68	16
	INDX	1	0	100
30-10-2014	ABSDATA	81	68	16
	INDX	1	0	100
29-10-2014	ABSDATA	81	68	16
	INDX	1	0	100
28-10-2014	ABSDATA	81	68	16
	INDX	1	0	100
27-10-2014	ABSDATA	81	68	16
	INDX	1	0	100
26-10-2014	ABSDATA	81	68	16
	INDX	1	0	100

Weekly SLA Customer Report

Customer PHS_Production
Database ID 47



=====
STANDBY DATABASE HEALTH PHS_Production
=====

Recovery lag for last 7 days



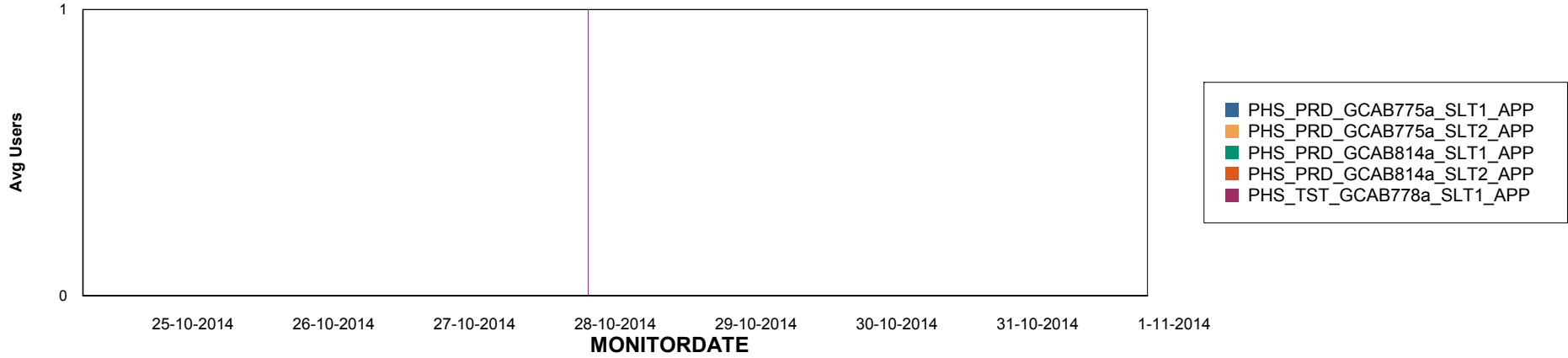
Weekly SLA Customer Report

Customer PHS_Production
Database ID 47

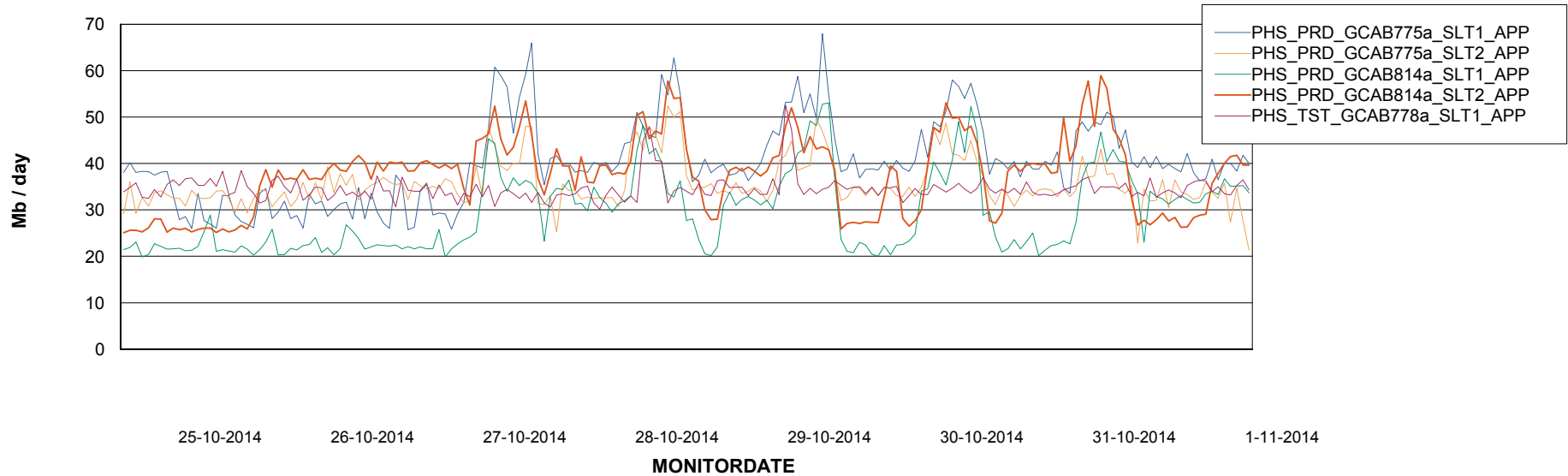


=====
ABSolute Application Server Services
=====

Disaster per ABS Server



Avg memory used per ABS Server Service



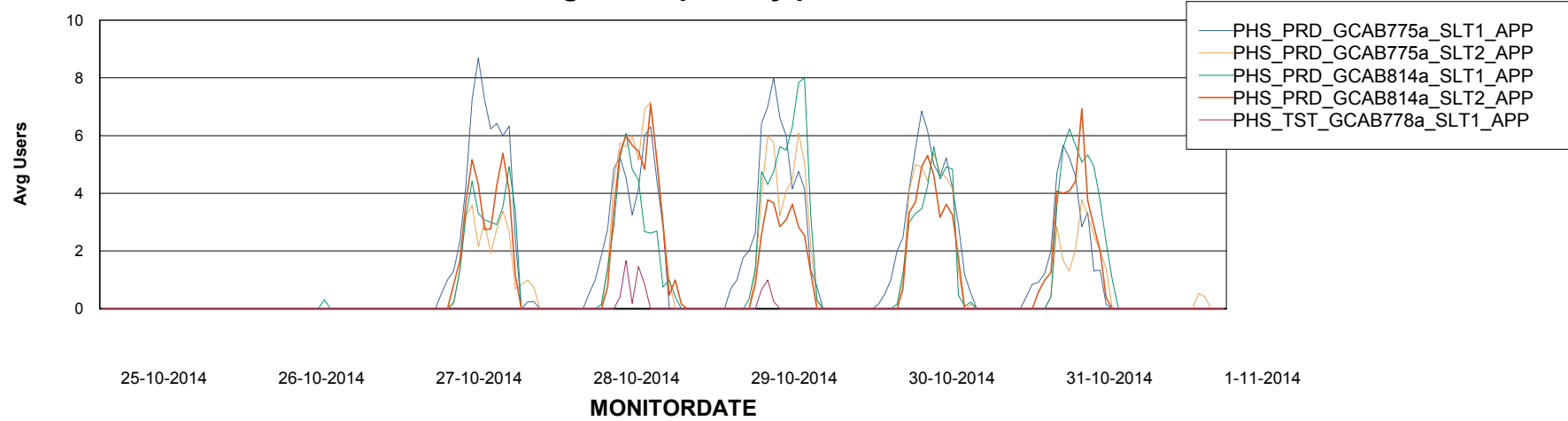
Weekly SLA Customer Report

Customer PHS_Production
Database ID 47



=====
ABSolute Application Server Services
=====

Avg users per day per ABS server



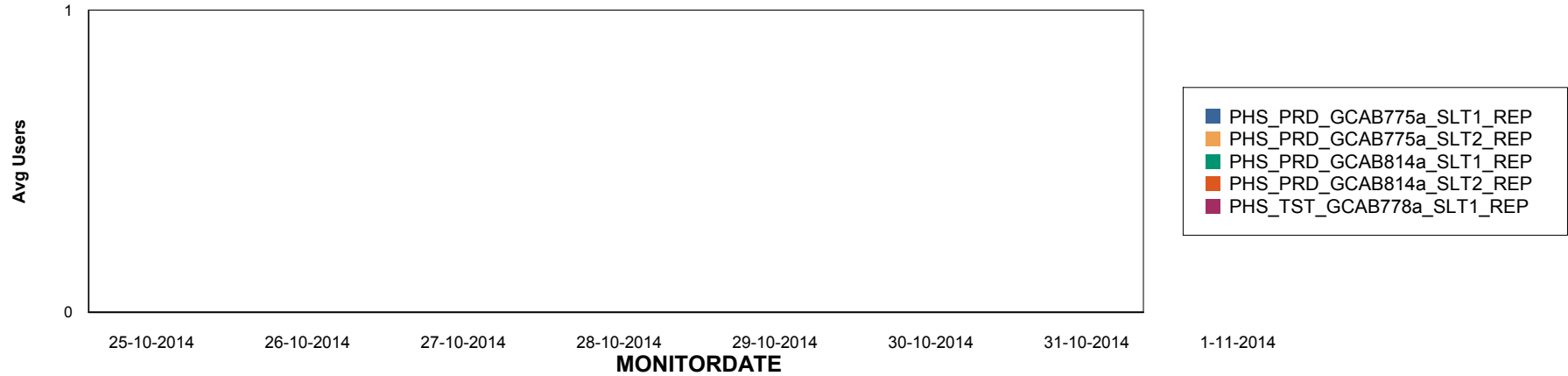
Weekly SLA Customer Report

Customer PHS_Production
Database ID 47

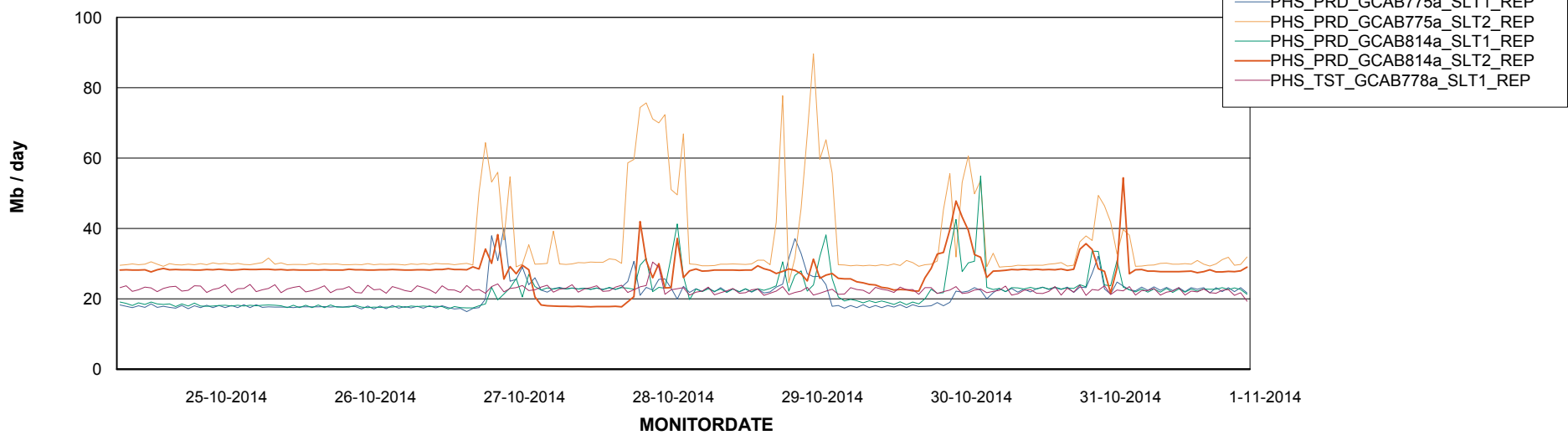


=====
ABSolute Application ReportServer Services
=====

Disaster per ReportServer



Avg memory used per ReportServer Service

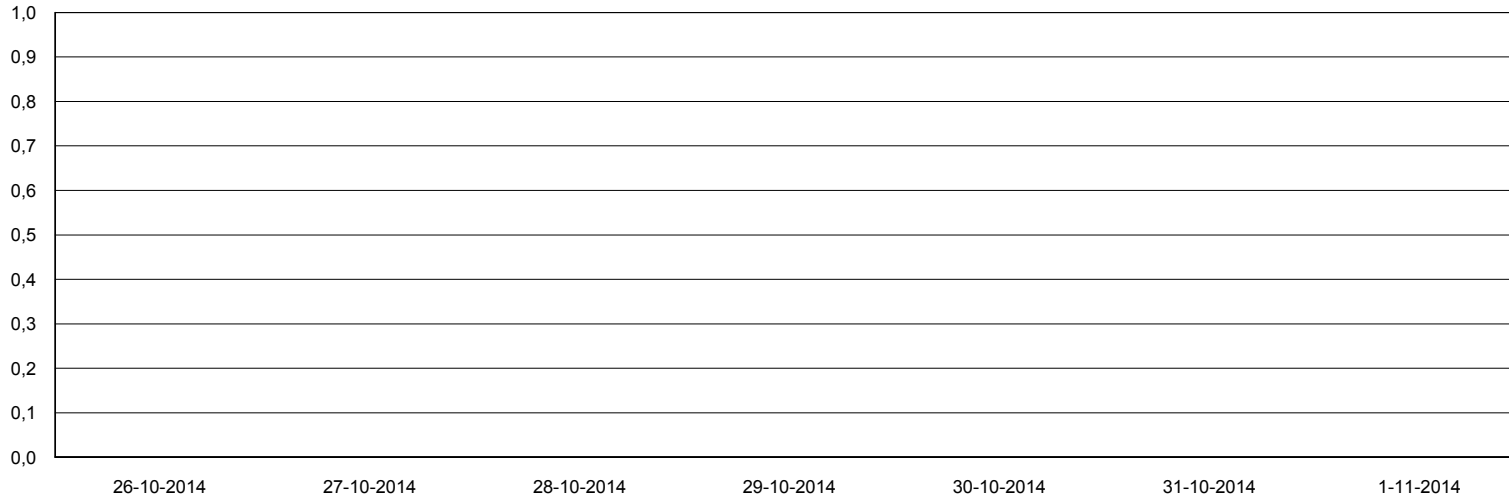


Weekly SLA Customer Report

Customer PHS_Production
Database ID 47



Disaster per ABS component



- PHS_PRD_GCAB775a_SLT1_APP
- PHS_PRD_GCAB775a_SLT1_REP
- PHS_PRD_GCAB775a_SLT2_APP
- PHS_PRD_GCAB775a_SLT2_REP
- PHS_PRD_GCAB814a_SLT1_APP
- PHS_PRD_GCAB814a_SLT1_REP
- PHS_PRD_GCAB814a_SLT2_APP
- PHS_PRD_GCAB814a_SLT2_REP
- PHS_TST_GCAB778a_SLT1_APP
- PHS_TST_GCAB778a_SLT1_REP