

# Weekly SLA Customer Report

Customer NIX\_Production  
 Database ID 51



=====  
 HARDDISK USAGE NIX\_PRD\_ABSAPP1  
 =====

	Total disk space on C (GB)	Free disk space on C (GB)
1-11-2014	136	84
31-10-2014	136	84
30-10-2014	136	84
29-10-2014	136	84
28-10-2014	136	84
27-10-2014	136	84
26-10-2014	136	84

=====  
 HARDDISK USAGE NIX\_PRD\_ABSWEB1  
 =====

	Total disk space on C (GB)	Free disk space on C (GB)
1-11-2014	930	731
31-10-2014	930	731
30-10-2014	930	731
29-10-2014	930	731
28-10-2014	930	731
27-10-2014	930	731
26-10-2014	930	731

## Weekly SLA Customer Report

Customer      NIX\_Production  
 Database ID    51



=====  
 HARDDISK USAGE    NIX\_PRD\_ORACLE\_B11  
 =====

	Total disk space on C (GB)	Free disk space on C (GB)	Total disk space on D (GB)	Free disk space on D (GB)	Total disk space on E (GB)	Free disk space on E (GB)
1-11-2014	40	7	279	177	236	167
31-10-2014	40	7	279	177	200	133
30-10-2014	40	7	279	177	186	117
29-10-2014	40	8	279	177	234	164
28-10-2014	40	8	279	177	236	167
27-10-2014	40	8	279	179	236	167
26-10-2014	40	8	279	179	236	168

=====  
 HARDDISK USAGE    NIX\_PRD\_ORCDB1  
 =====

	Total disk space on C (GB)	Free disk space on C (GB)	Total disk space on D (GB)	Free disk space on D (GB)	Total disk space on E (GB)	Free disk space on E (GB)
1-11-2014	136	69	136	36	136	50
31-10-2014	136	69	136	36	136	52
30-10-2014	136	69	136	36	136	52
29-10-2014	136	69	136	36	136	52
28-10-2014	136	69	136	36	136	52
27-10-2014	136	69	136	36	136	52
26-10-2014	136	69	136	36	136	52

# Weekly SLA Customer Report

Customer NIX\_Production  
Database ID 51



HARDDISK USAGE NIX\_PRD\_ORCDB2

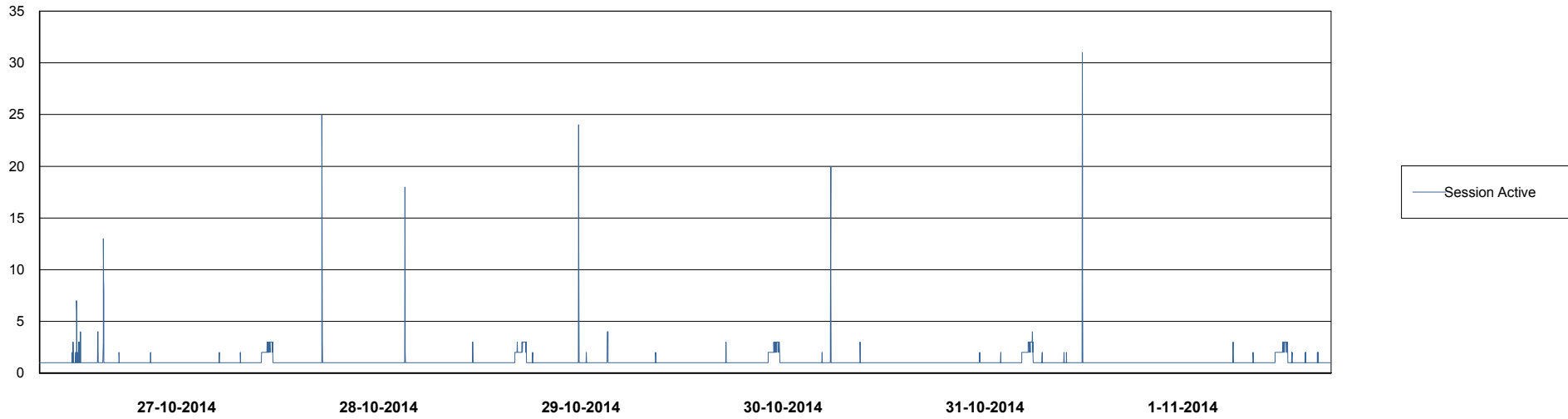
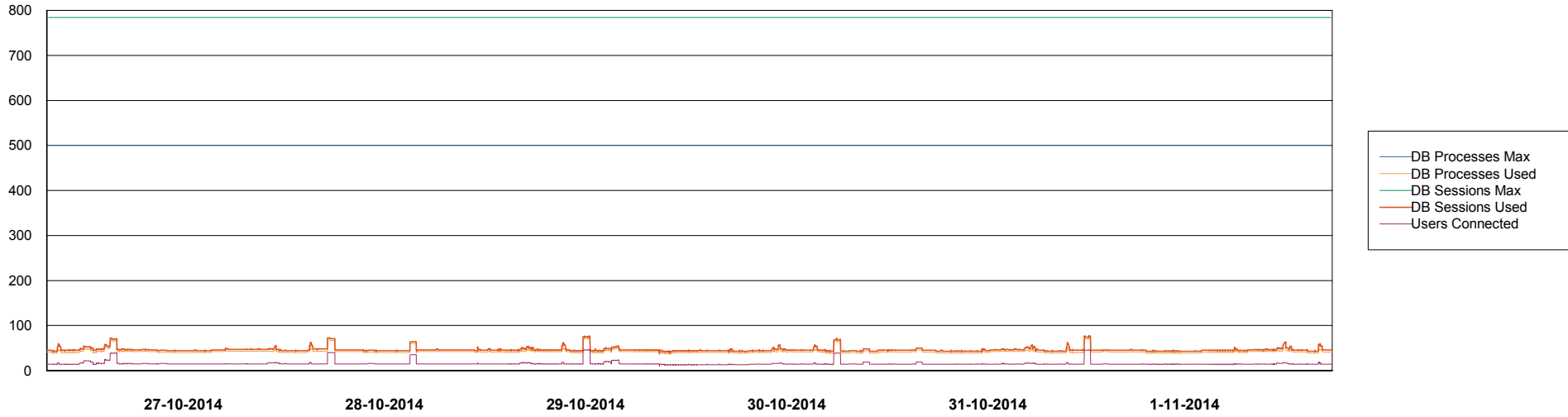
	Total disk space on C (GB)	Free disk space on C (GB)	Total disk space on D (GB)	Free disk space on D (GB)	Total disk space on E (GB)	Free disk space on E (GB)
1-11-2014	279	46	279	65	279	153
31-10-2014	279	46	279	64	279	103
30-10-2014	279	45	279	65	279	54
29-10-2014	279	46	279	65	279	54
28-10-2014	279	46	279	65	279	58
27-10-2014	279	46	279	65	279	65
26-10-2014	279	46	279	65	279	53

# Weekly SLA Customer Report

Customer NIX\_Production  
Database ID 51



DATABASE PERFORMANCE NIXDB\_BI



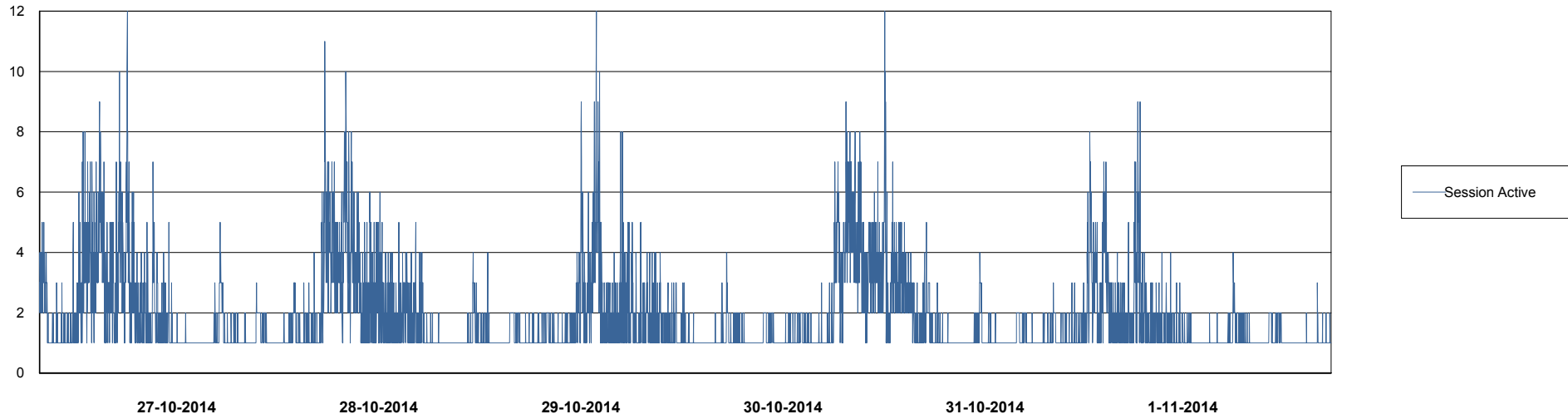
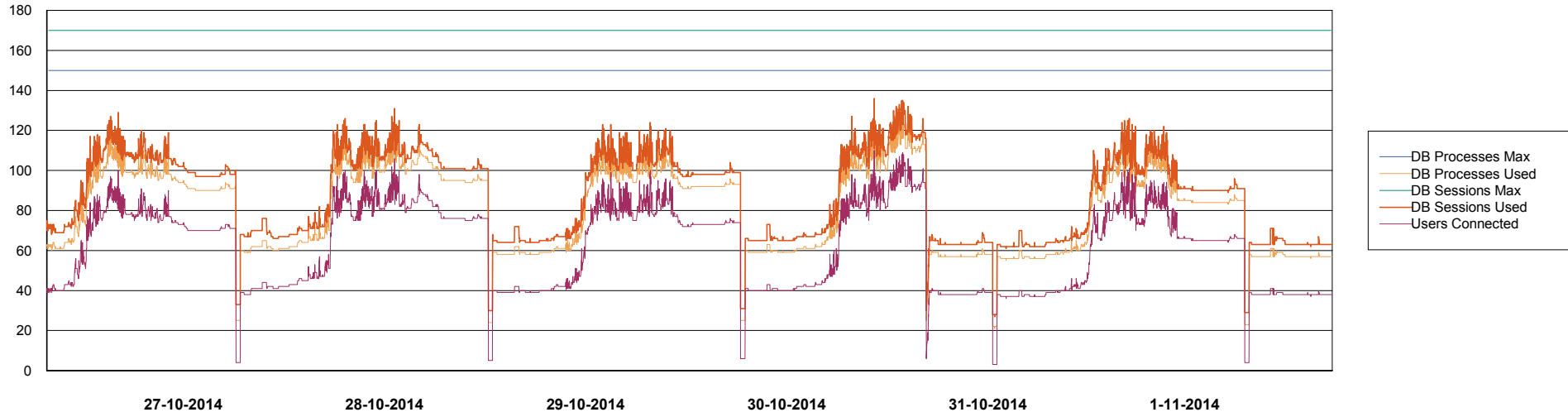
# Weekly SLA Customer Report

Customer NIX\_Production  
Database ID 51



## DATABASE PERFORMANCE

NIXDB\_Production

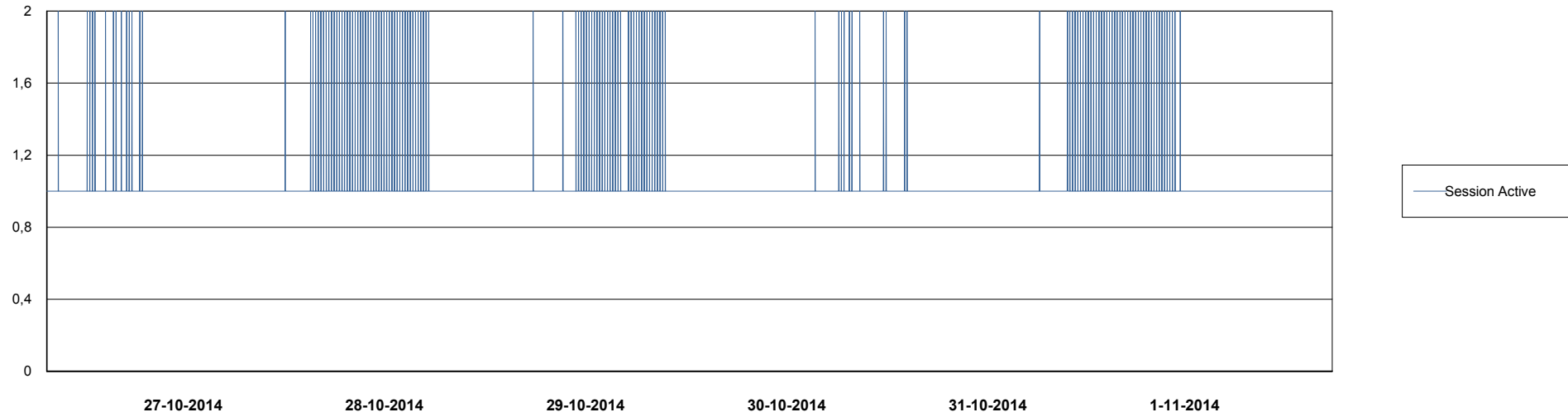
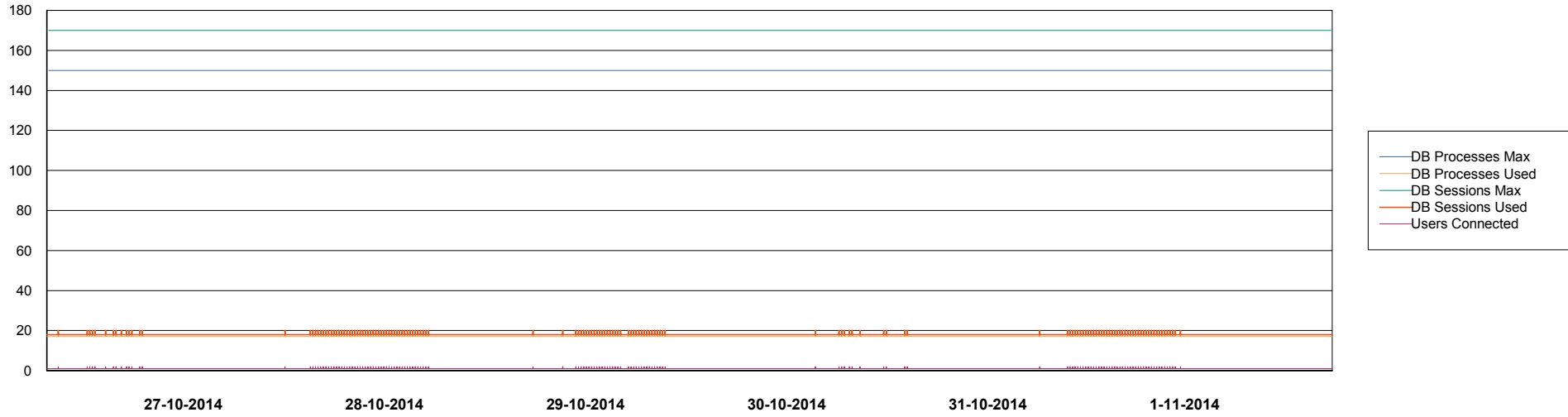


# Weekly SLA Customer Report

Customer NIX\_Production  
Database ID 51



DATABASE PERFORMANCE NIXDB\_Standby





# Weekly SLA Customer Report

Customer NIX\_Production  
 Database ID 51



=====  
 DATABASE TABLESPACES NIXDB\_BI  
 =====

TOTAL DATABASE SIZE PER TABLESPACE

Date	Tablespace Name	Filesize (Gb)	Usedsize (Gb)	Percentage free
1-11-2014	ABSDATA	22	18	18
	INDX	40	28	30
31-10-2014	ABSDATA	22	18	18
	INDX	40	28	30
30-10-2014	ABSDATA	22	18	18
	INDX	40	28	30
29-10-2014	ABSDATA	22	18	18
	INDX	40	28	30
28-10-2014	ABSDATA	22	18	18
	INDX	40	28	30
27-10-2014	ABSDATA	22	18	18
	INDX	40	28	30
26-10-2014	ABSDATA	20	18	10
	INDX	40	28	30

# Weekly SLA Customer Report

Customer NIX\_Production  
 Database ID 51



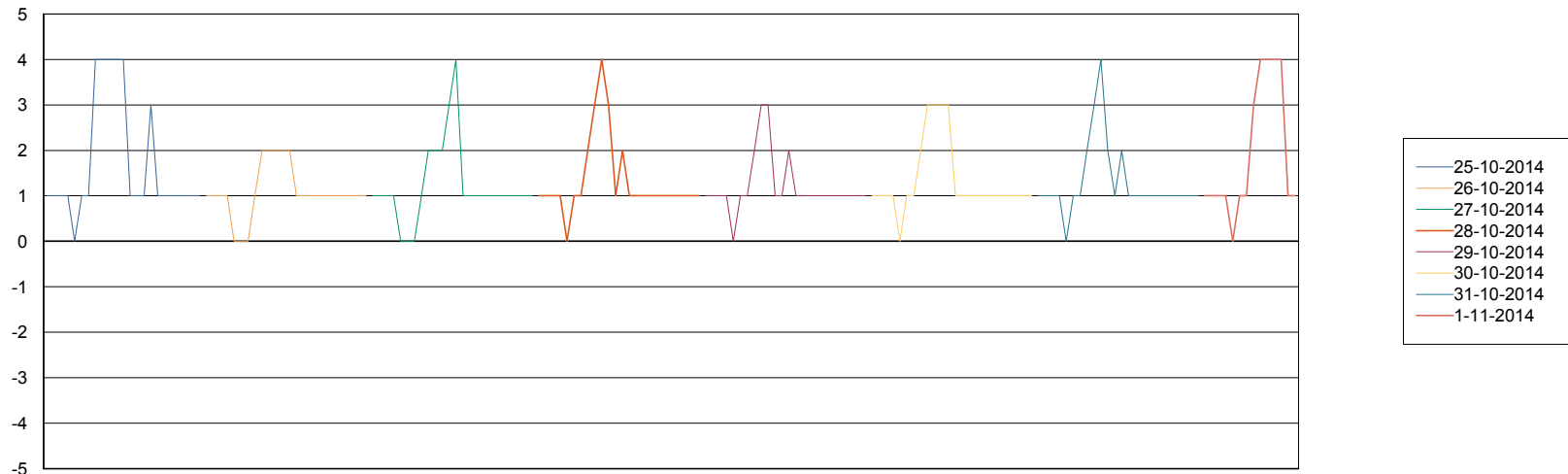
=====  
 DATABASE TABLESPACES NIXDB\_Production  
 =====

TOTAL DATABASE SIZE PER TABLESPACE

Date	Tablespace Name	Filesize (Gb)	Usedsize (Gb)	Percentage free
1-11-2014	ABSDATA	40	29	28
	INDX	97	78	20
31-10-2014	ABSDATA	40	28	30
	INDX	97	78	20
30-10-2014	ABSDATA	40	28	30
	INDX	97	78	20
29-10-2014	ABSDATA	40	28	30
	INDX	97	78	20
28-10-2014	ABSDATA	40	28	30
	INDX	97	78	20
27-10-2014	ABSDATA	40	28	30
	INDX	97	78	20
26-10-2014	ABSDATA	40	28	30
	INDX	97	78	20

=====  
 STANDBY DATABASE HEALTH NIX\_Production  
 =====

Recovery lag for last 7 days



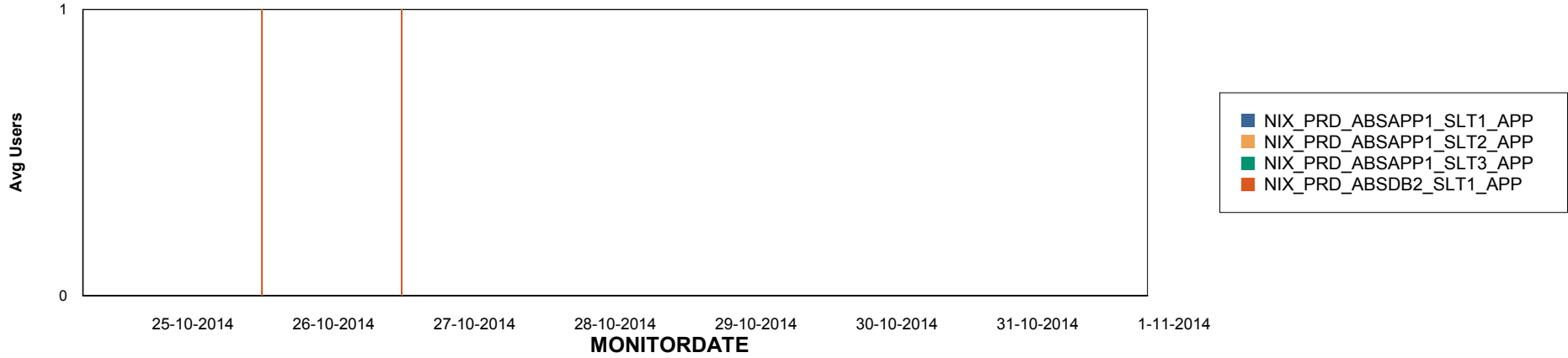
# Weekly SLA Customer Report

Customer NIX\_Production  
Database ID 51

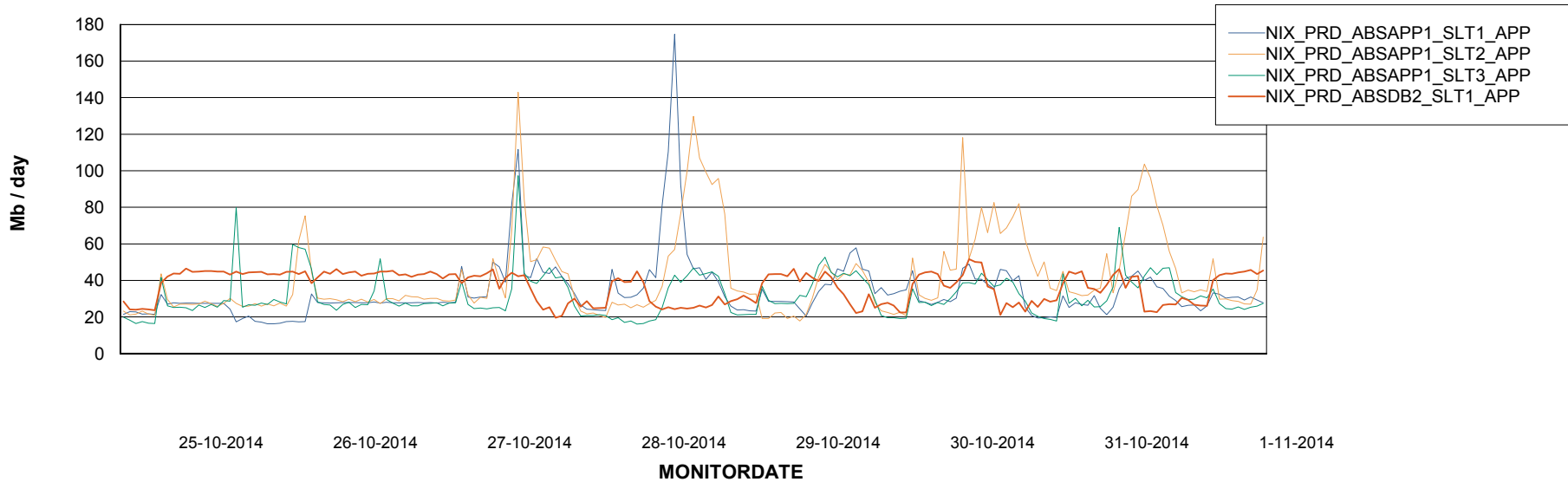


## ABSolute Application Server Services

### Disaster per ABS Server



### Avg memory used per ABS Server Service



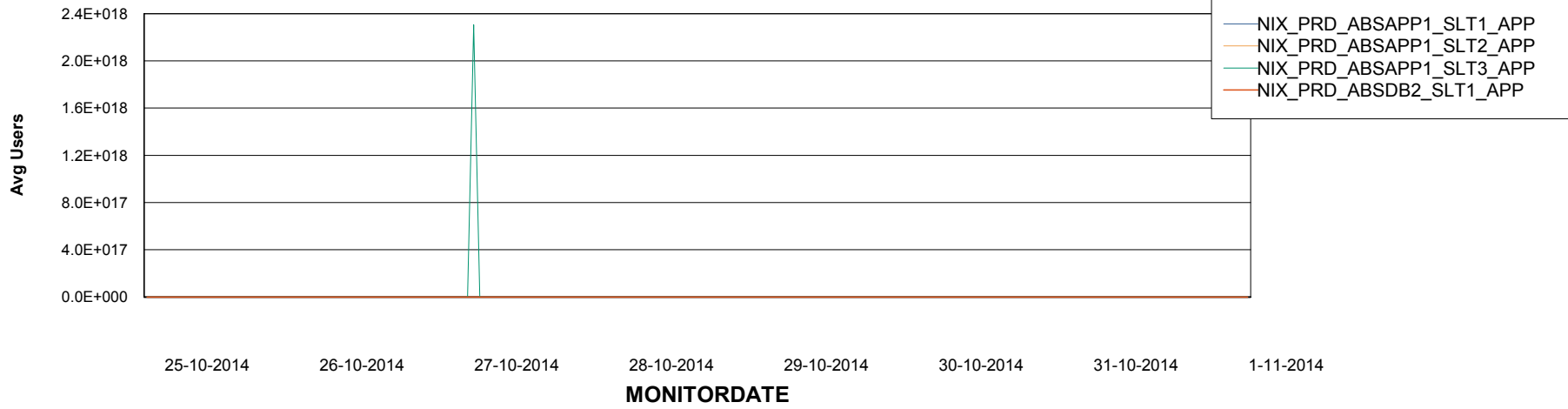
# Weekly SLA Customer Report

Customer NIX\_Production  
Database ID 51



=====  
ABSolute Application Server Services  
=====

### Avg users per day per ABS server



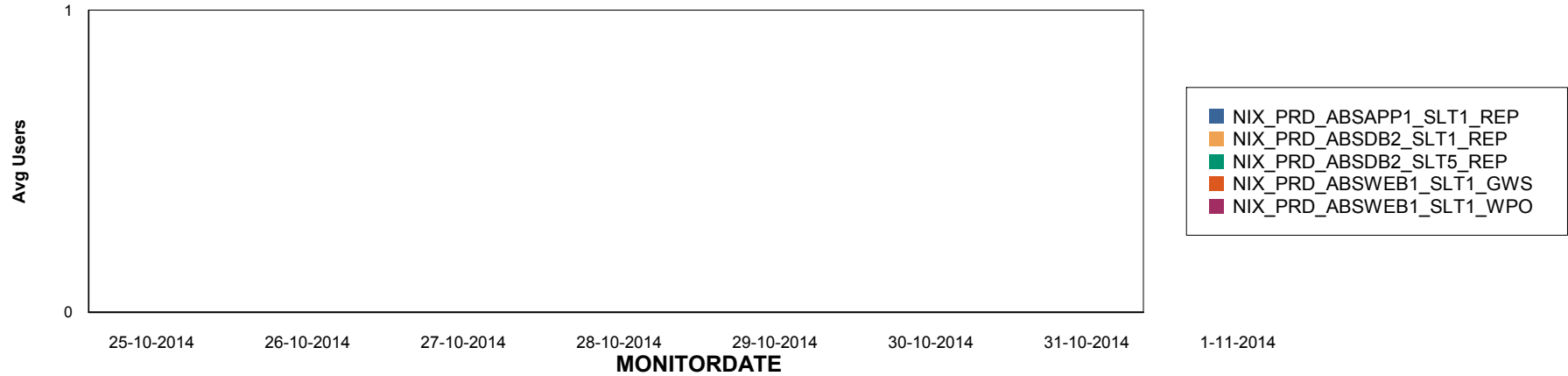
# Weekly SLA Customer Report

Customer NIX\_Production  
Database ID 51

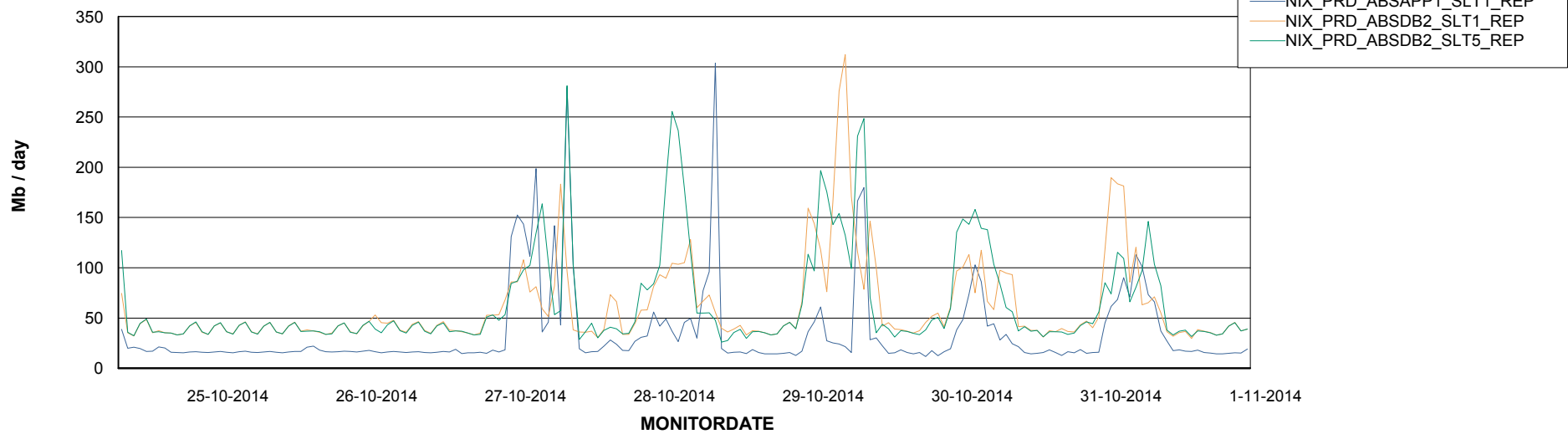


=====  
ABSolute Application ReportServer Services  
=====

## Disaster per ReportServer



## Avg memory used per ReportServer Service



# Weekly SLA Customer Report

Customer NIX\_Production  
Database ID 51



## Disaster per ABS component

