

Weekly SLA Customer Report

Customer LLG_Production
 Database ID 53



=====
 HARDDISK USAGE LLG_PRD_BI01
 =====

	Total disk space on C (GB)	Free disk space on C (GB)
1-11-2014	559	397
31-10-2014	559	397
30-10-2014	559	397
29-10-2014	559	398
28-10-2014	559	398
27-10-2014	559	398
26-10-2014	559	398

=====
 HARDDISK USAGE LLG_PRD_OR01
 =====

	Total disk space on C (GB)	Free disk space on C (GB)	Total disk space on D (GB)	Free disk space on D (GB)
1-11-2014	279	178	600	161
31-10-2014	279	178	600	129
30-10-2014	279	178	600	97
29-10-2014	279	178	600	104
28-10-2014	279	178	600	111
27-10-2014	279	178	600	125
26-10-2014	279	178	600	141

Weekly SLA Customer Report

Customer LLG_Production
 Database ID 53



=====

HARDDISK USAGE LLG_PRD_OR2

=====

	Total disk space on C (GB)	Free disk space on C (GB)	Total disk space on D (GB)	Free disk space on D (GB)
1-11-2014	293	249	545	308
31-10-2014	293	249	545	254
30-10-2014	293	249	545	201
29-10-2014	293	249	545	203
28-10-2014	293	249	545	204
27-10-2014	293	249	545	214
26-10-2014	293	249	545	224

=====

HARDDISK USAGE LLG_PRD_vABS01

=====

	Total disk space on C (GB)	Free disk space on C (GB)	Total disk space on D (GB)	Free disk space on D (GB)
1-11-2014	150	32	150	146
31-10-2014	150	31	150	146
30-10-2014	150	32	150	146
29-10-2014	150	32	150	146
28-10-2014	150	47	150	146
27-10-2014	150	58	150	146
26-10-2014	150	58	150	146

Weekly SLA Customer Report

Customer LLG_Production
 Database ID 53



=====
 HARDDISK USAGE LLG_PRD_vABS02
 =====

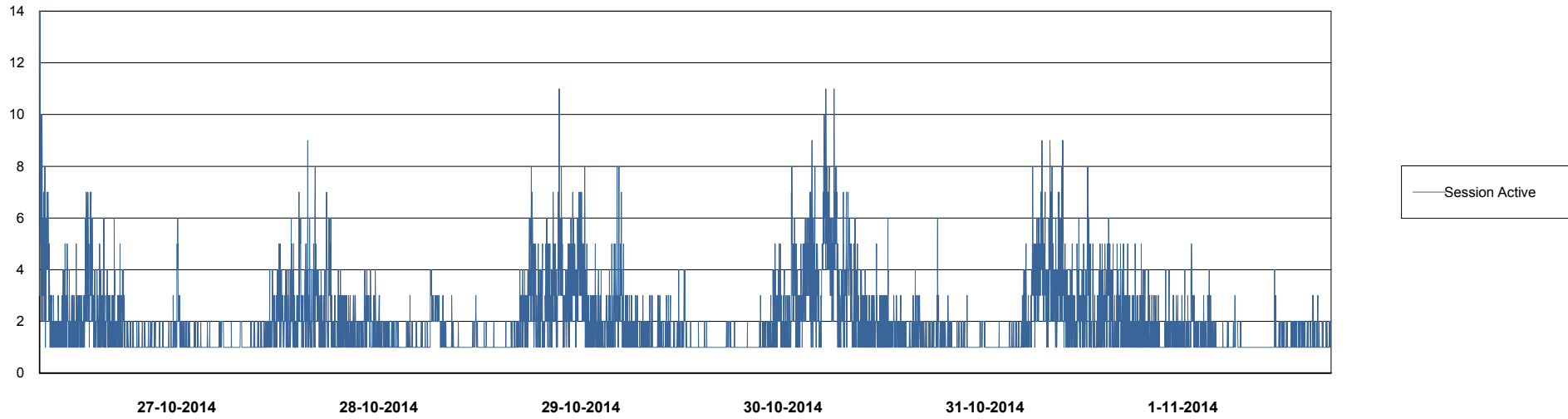
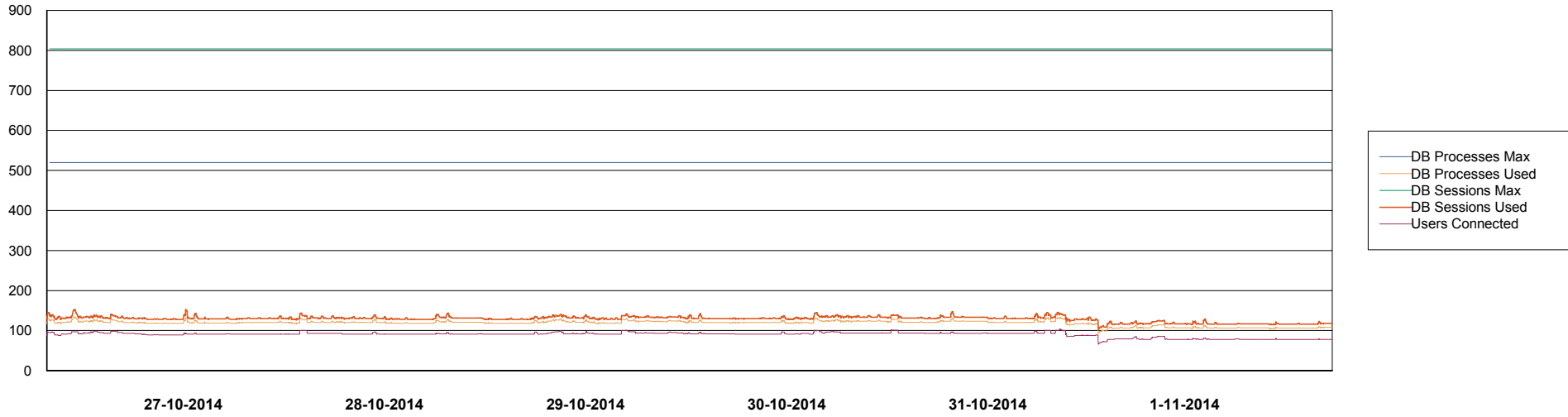
	Total disk space on C (GB)	Free disk space on C (GB)	Total disk space on D (GB)	Free disk space on D (GB)
1-11-2014	150	52	150	127
31-10-2014	150	51	150	127
30-10-2014	150	52	150	127
29-10-2014	150	52	150	127
28-10-2014	150	67	150	127
27-10-2014	150	80	150	127
26-10-2014	150	80	150	127

Weekly SLA Customer Report

Customer LLG_Production
Database ID 53



DATABASE PERFORMANCE LLGDB_Production

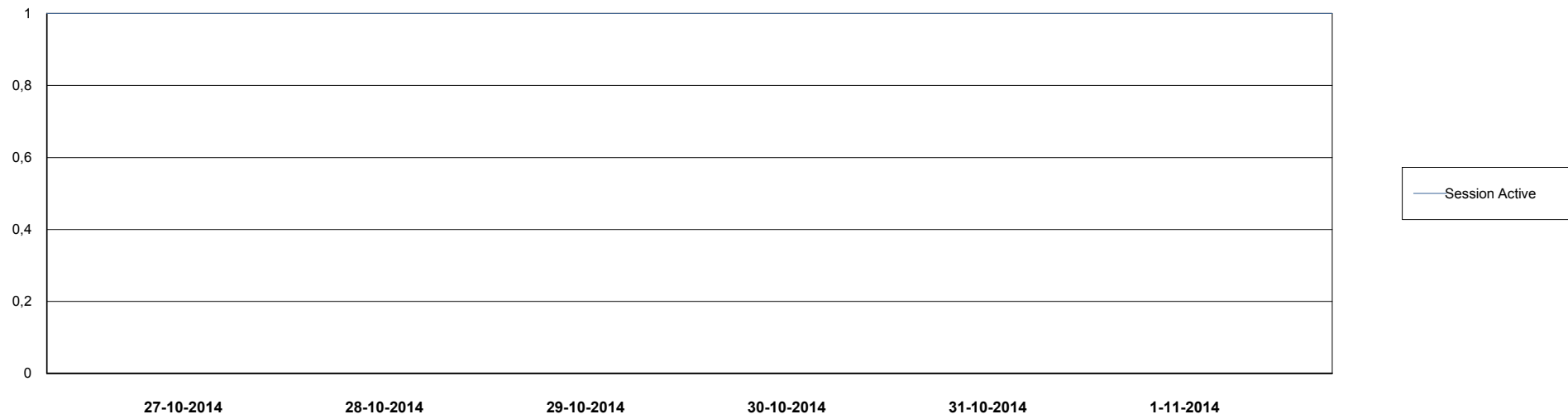
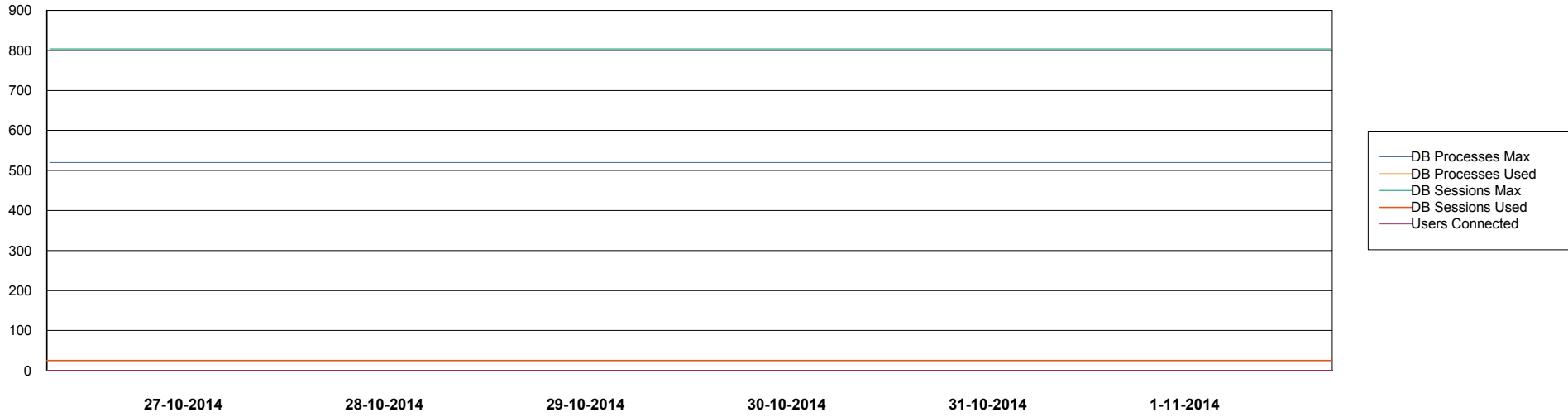


Weekly SLA Customer Report

Customer LLG_Production
Database ID 53



DATABASE PERFORMANCE LLGDB_Standby



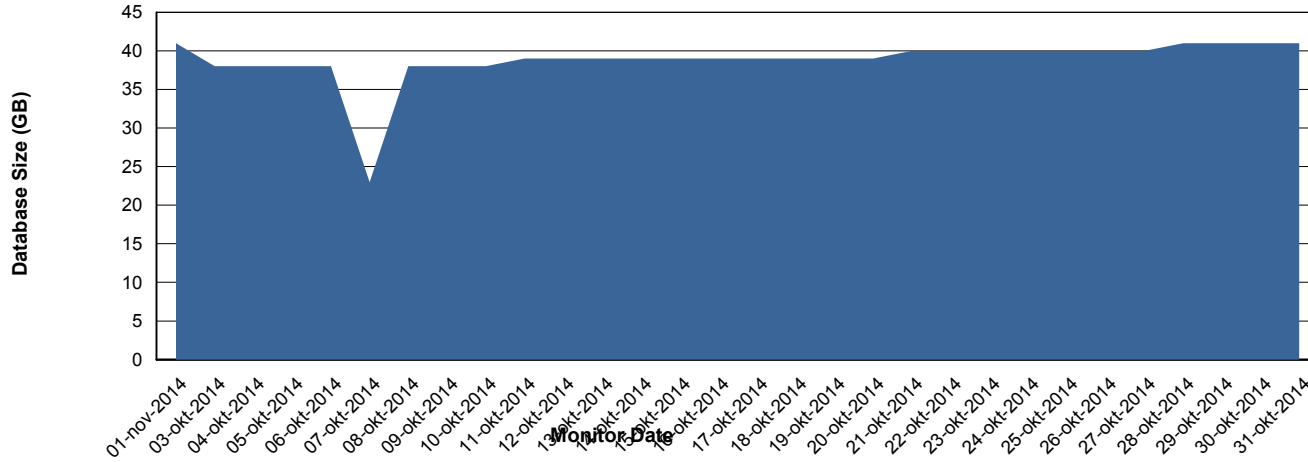
Weekly SLA Customer Report

Customer LLG_Production
 Database ID 53



=====
 DATABASE SIZE LLGDB_Production
 =====

Database growth over last month



=====
 DATABASE TABLESPACES LLGDB_Production
 =====

TOTAL DATABASE SIZE PER TABLESPACE

Date	Tablespace Name	Filesize (Gb)	Usedsize (Gb)	Percentage free
1-11-2014	ABSDATA	20	14	30
	INDX	40	25	38
31-10-2014	ABSDATA	20	14	30
	INDX	40	25	38
30-10-2014	ABSDATA	20	14	30
	INDX	40	25	38
29-10-2014	ABSDATA	20	14	30
	INDX	40	25	38
28-10-2014	ABSDATA	20	14	30
	INDX	40	25	38
27-10-2014	ABSDATA	20	14	30
	INDX	40	25	38
26-10-2014	ABSDATA	20	14	30
	INDX	40	24	40

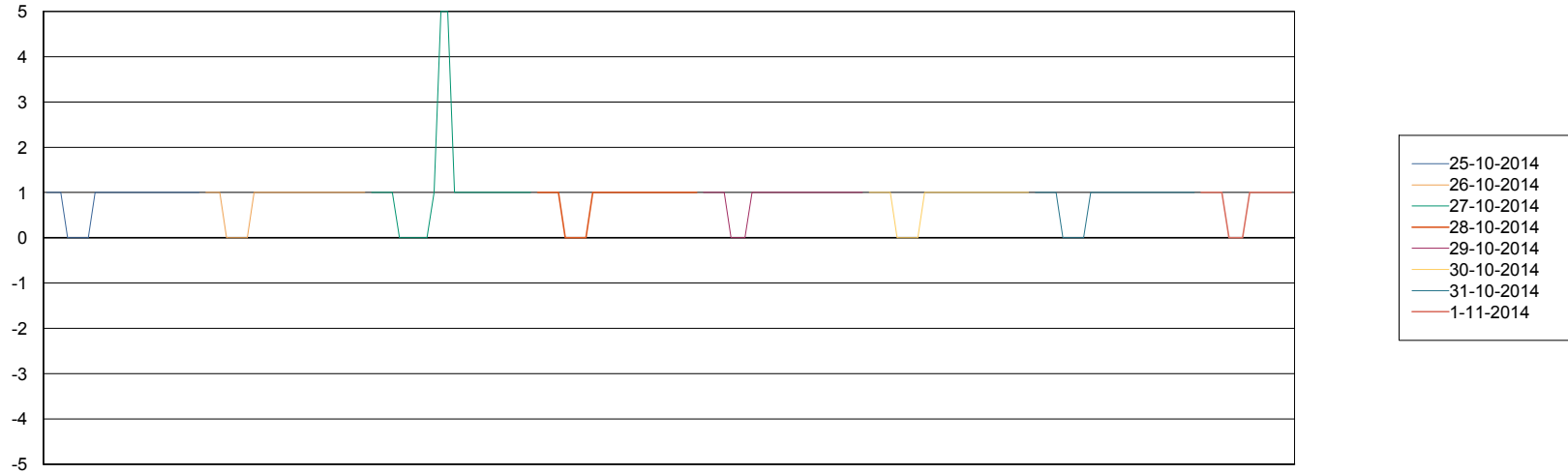
Weekly SLA Customer Report

Customer LLG_Production
Database ID 53



=====
STANDBY DATABASE HEALTH LLG_Production
=====

Recovery lag for last 7 days



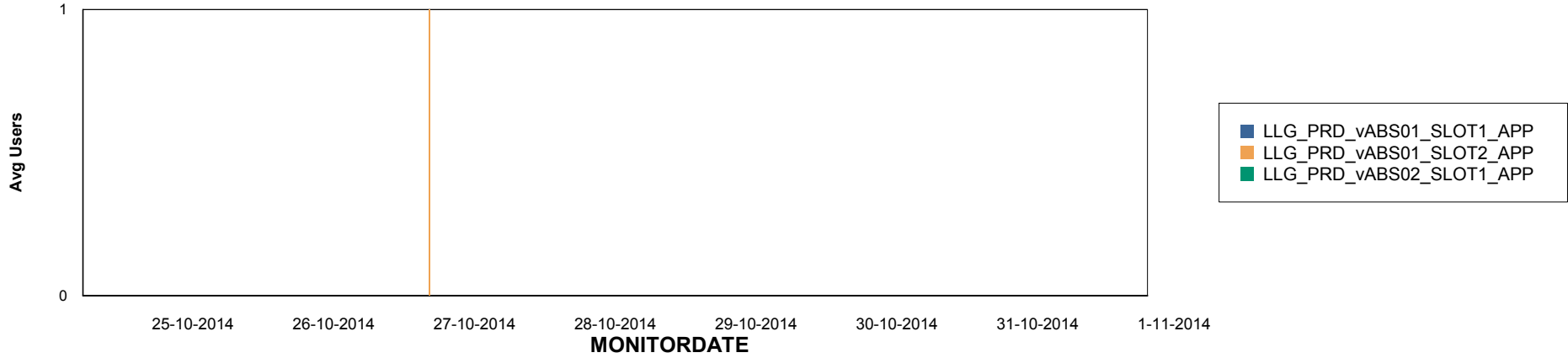
Weekly SLA Customer Report

Customer LLG_Production
Database ID 53

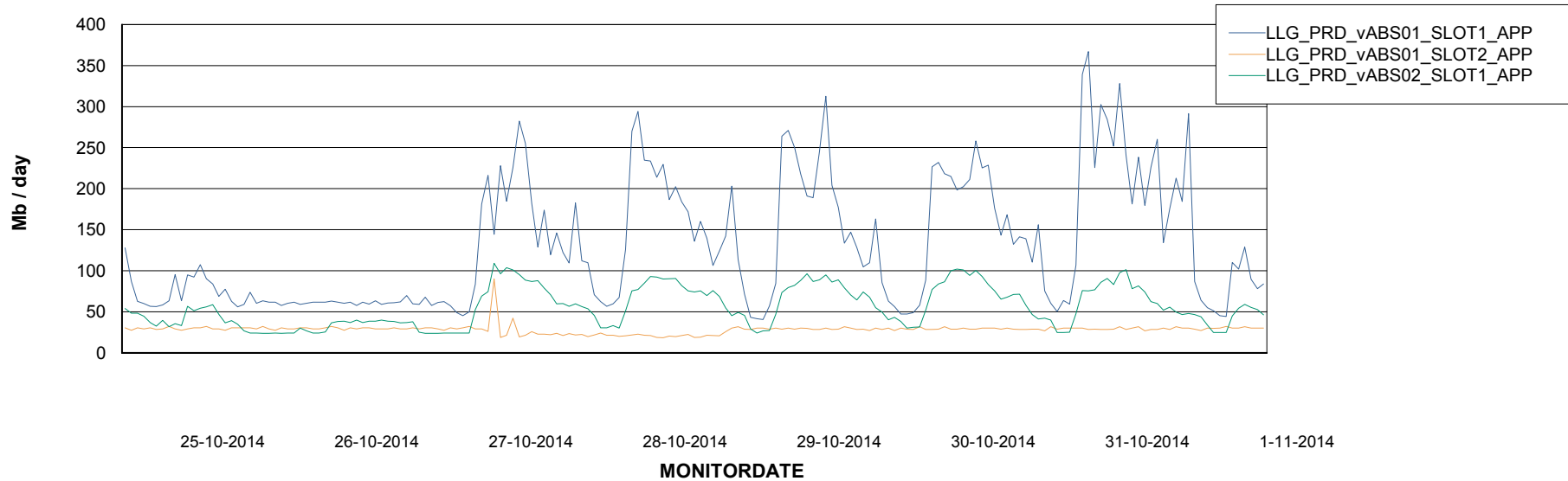


ABSolute Application Server Services

Disaster per ABS Server



Avg memory used per ABS Server Service



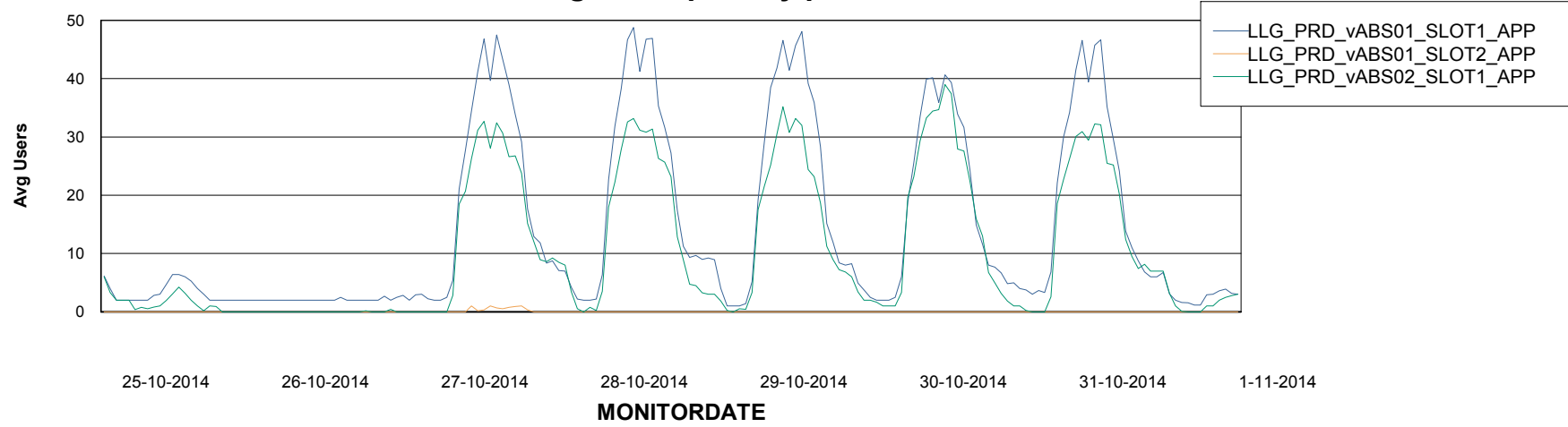
Weekly SLA Customer Report

Customer LLG_Production
Database ID 53



=====
ABSolute Application Server Services
=====

Avg users per day per ABS server



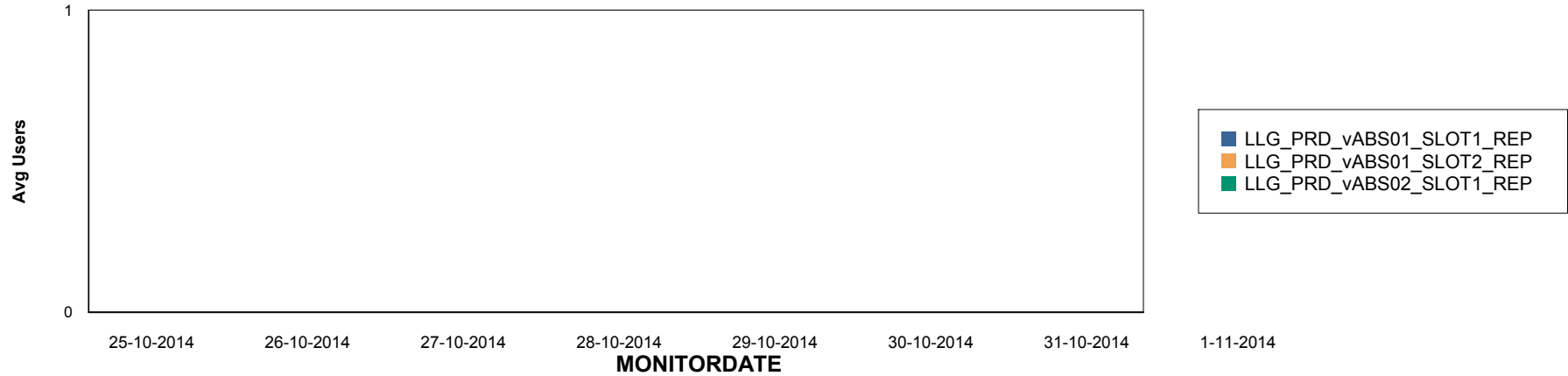
Weekly SLA Customer Report

Customer LLG_Production
Database ID 53

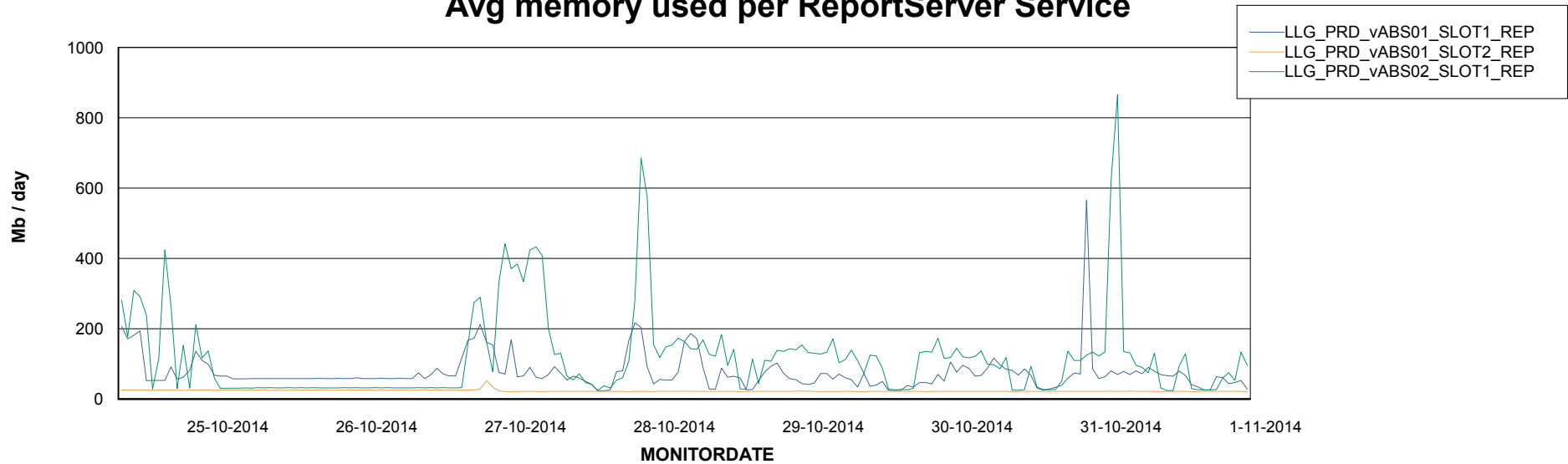


=====
ABSolute Application ReportServer Services
=====

Disaster per ReportServer



Avg memory used per ReportServer Service



Weekly SLA Customer Report

Customer LLG_Production
Database ID 53



Disaster per ABS component

