

Weekly SLA Customer Report

Customer JWR Production
 Database ID 43



=====
 HARDDISK USAGE JWR_PRD_JWR-ABS-01
 =====

	Used disk space on / (GB)	Total disk space on / (GB)	Free disk space on / (GB)
1-11-2014	27	49	20
31-10-2014	27	49	20
30-10-2014	27	49	20
29-10-2014	27	49	20
28-10-2014	27	49	20
27-10-2014	27	49	20
26-10-2014	27	49	20

=====
 HARDDISK USAGE JWR_PRD_JWR-ABS-02
 =====

	Used disk space on / (GB)	Total disk space on / (GB)	Free disk space on / (GB)
1-11-2014	26	49	21
31-10-2014	26	49	21
30-10-2014	26	49	21
29-10-2014	26	49	21
28-10-2014	26	49	21
27-10-2014	26	49	21
26-10-2014	25	49	21

Weekly SLA Customer Report

Customer JWR Production
 Database ID 43



=====

HARDDISK USAGE JWR_PRD_JWR-ODB-01

=====

	Used disk space on / (GB)	Total disk space on / (GB)	Free disk space on / (GB)
1-11-2014	74	90	11
31-10-2014	75	90	11
30-10-2014	75	90	11
29-10-2014	74	90	11
28-10-2014	74	90	11
27-10-2014	75	90	11
26-10-2014	74	90	11

=====

HARDDISK USAGE JWR_PRD_JWR-ODB-02

=====

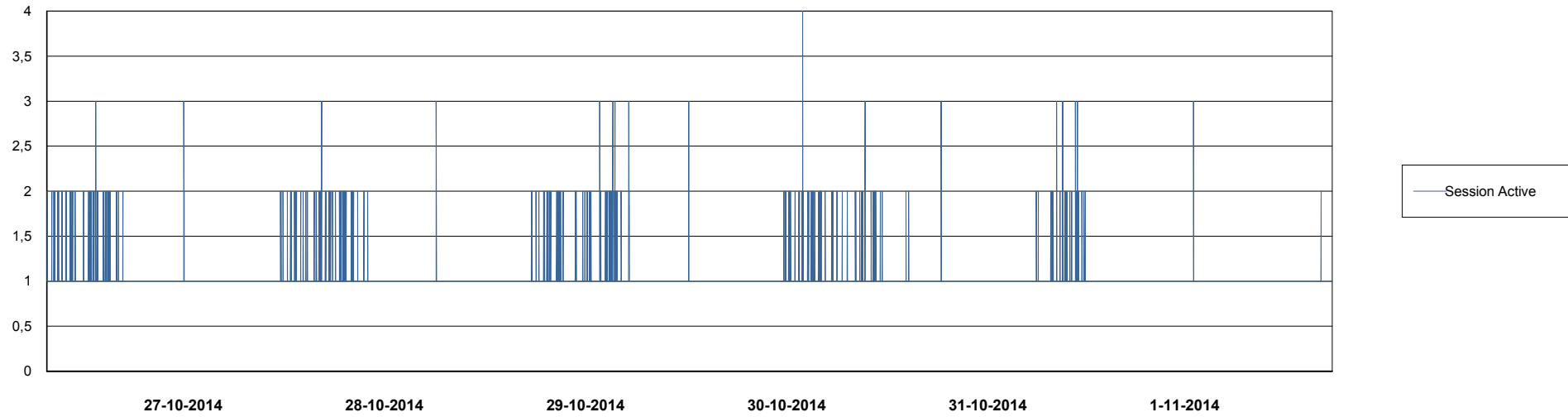
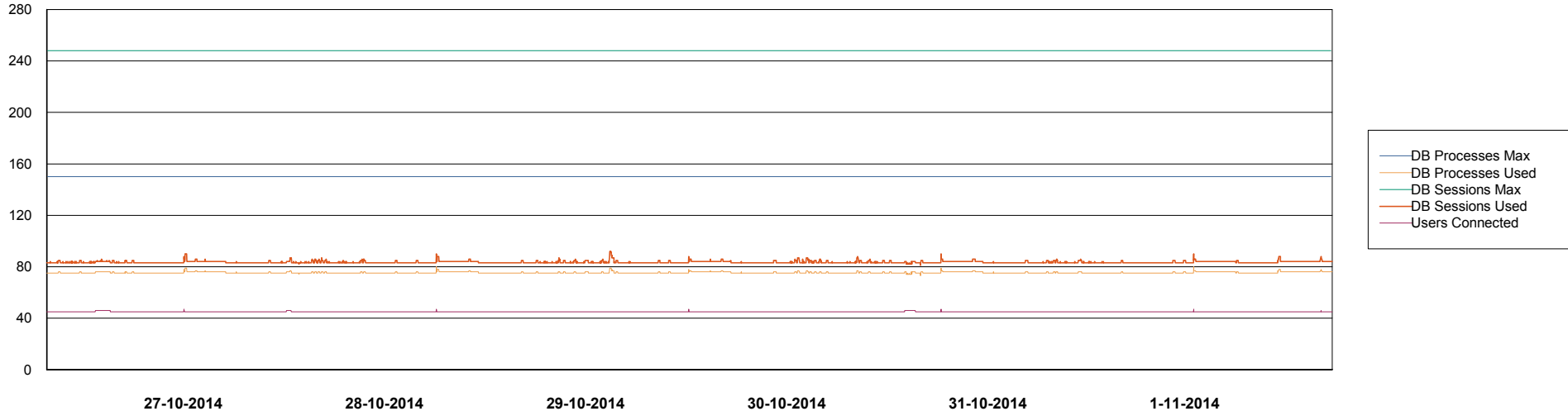
	Used disk space on / (GB)	Total disk space on / (GB)	Free disk space on / (GB)
1-11-2014	92	138	39
31-10-2014	92	138	39
30-10-2014	92	138	39
29-10-2014	92	138	39
28-10-2014	92	138	39
27-10-2014	92	138	39
26-10-2014	91	138	40

Weekly SLA Customer Report

Customer JWR Production
Database ID 43



DATABASE PERFORMANCE JWRDB_Production



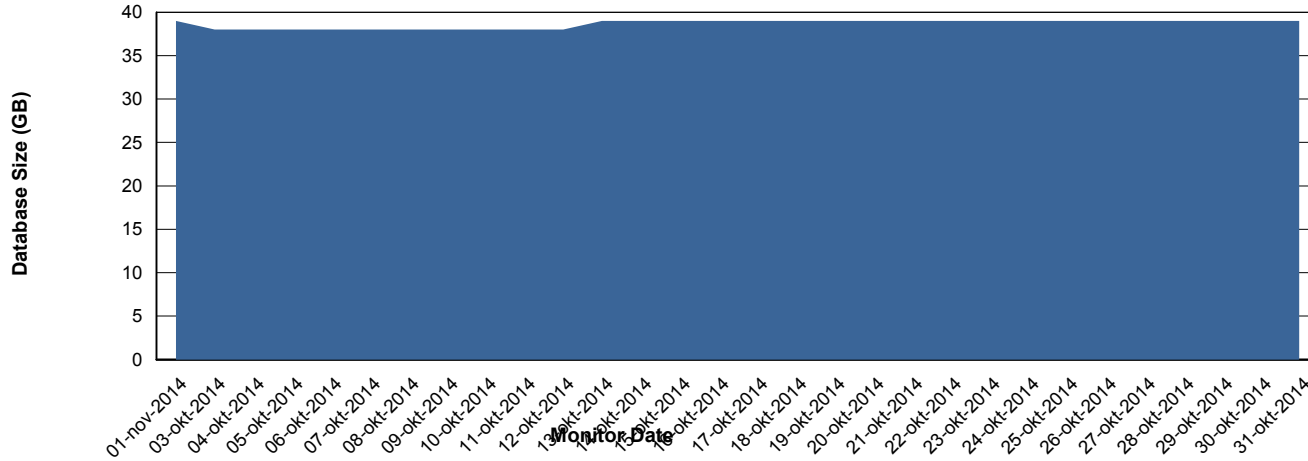
Weekly SLA Customer Report

Customer JWR Production
 Database ID 43



=====
 DATABASE SIZE JWRDB_Production
 =====

Database growth over last month



=====
 DATABASE TABLESPACES JWRDB_Production
 =====

TOTAL DATABASE SIZE PER TABLESPACE

Date	Tablespace Name	Filesize (Gb)	Usedsize (Gb)	Percentage free
1-11-2014	ABSDATA	15	11	27
	INDX	32	27	16
31-10-2014	ABSDATA	15	11	27
	INDX	32	27	16
30-10-2014	ABSDATA	15	11	27
	INDX	32	27	16
29-10-2014	ABSDATA	15	11	27
	INDX	32	27	16
28-10-2014	ABSDATA	15	11	27
	INDX	32	27	16
27-10-2014	ABSDATA	15	11	27
	INDX	32	27	16
26-10-2014	ABSDATA	15	11	27
	INDX	32	27	16

Weekly SLA Customer Report

Customer JWR Production
Database ID 43



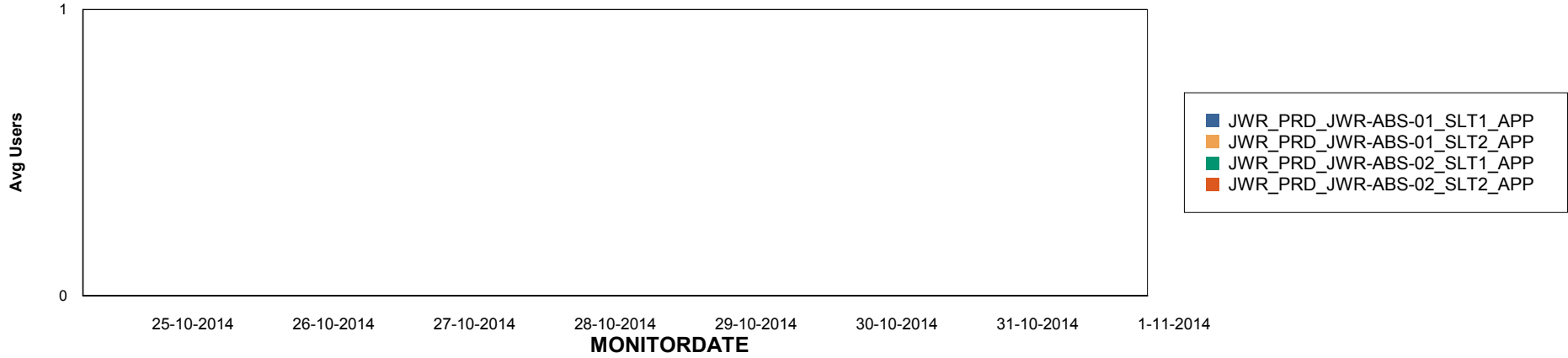
Weekly SLA Customer Report

Customer JWR Production
Database ID 43

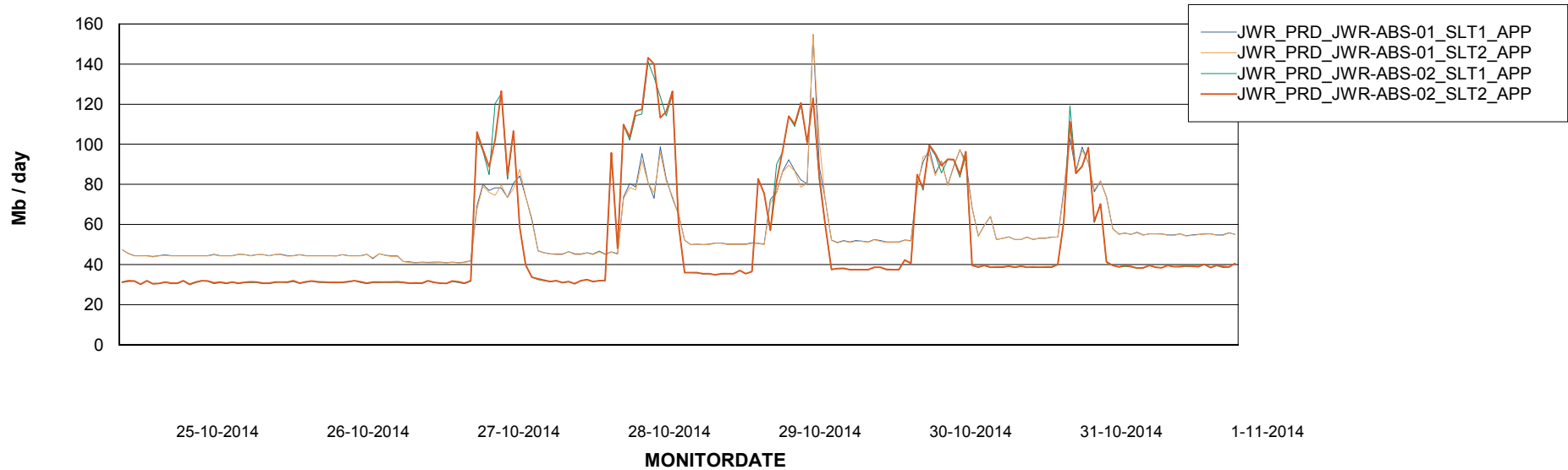


ABSolute Application Server Services

Disaster per ABS Server



Avg memory used per ABS Server Service



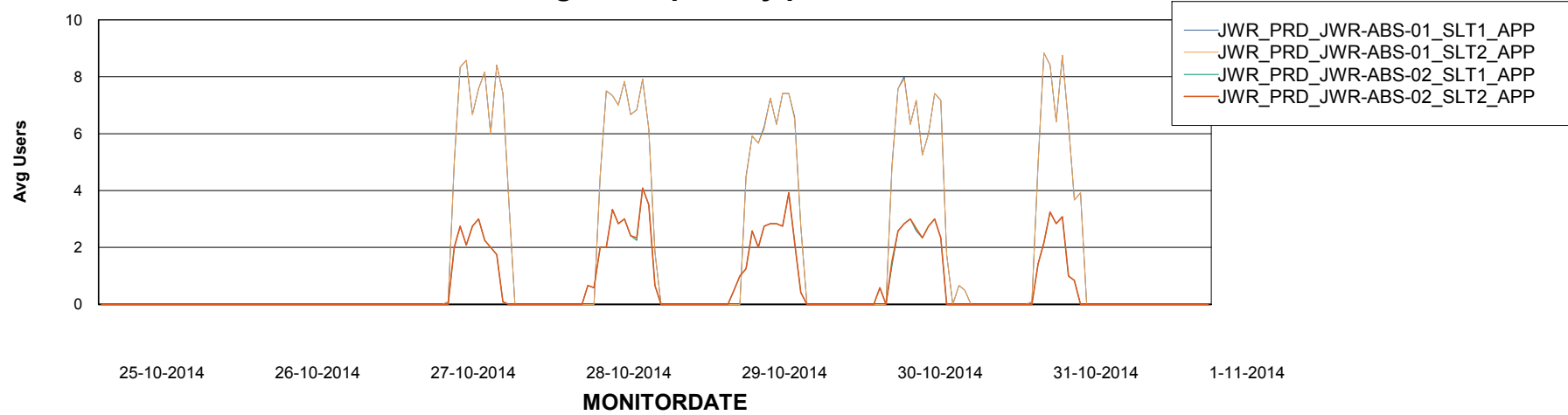
Weekly SLA Customer Report

Customer JWR Production
Database ID 43



=====
ABSolute Application Server Services
=====

Avg users per day per ABS server



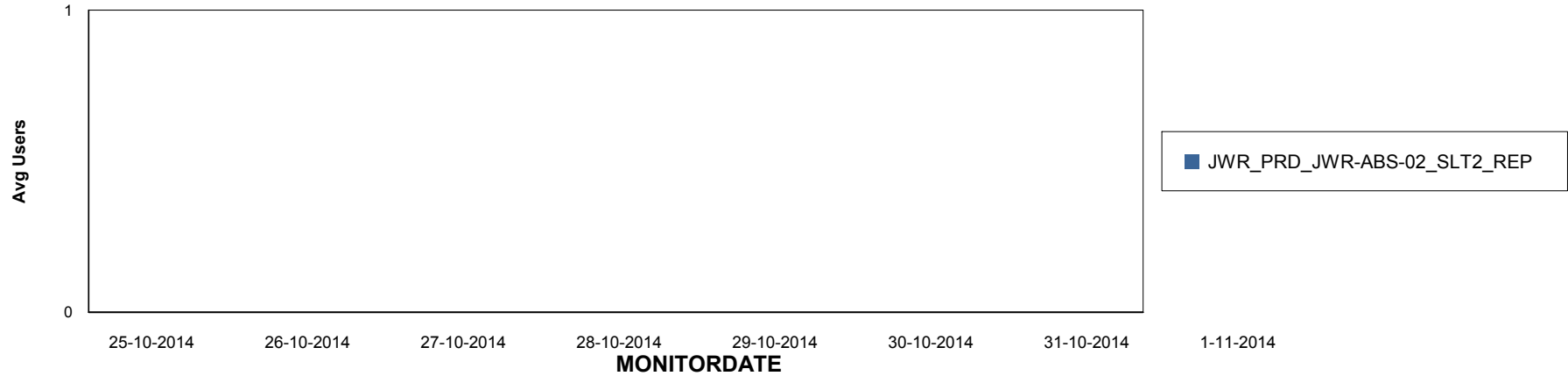
Weekly SLA Customer Report

Customer JWR Production
Database ID 43

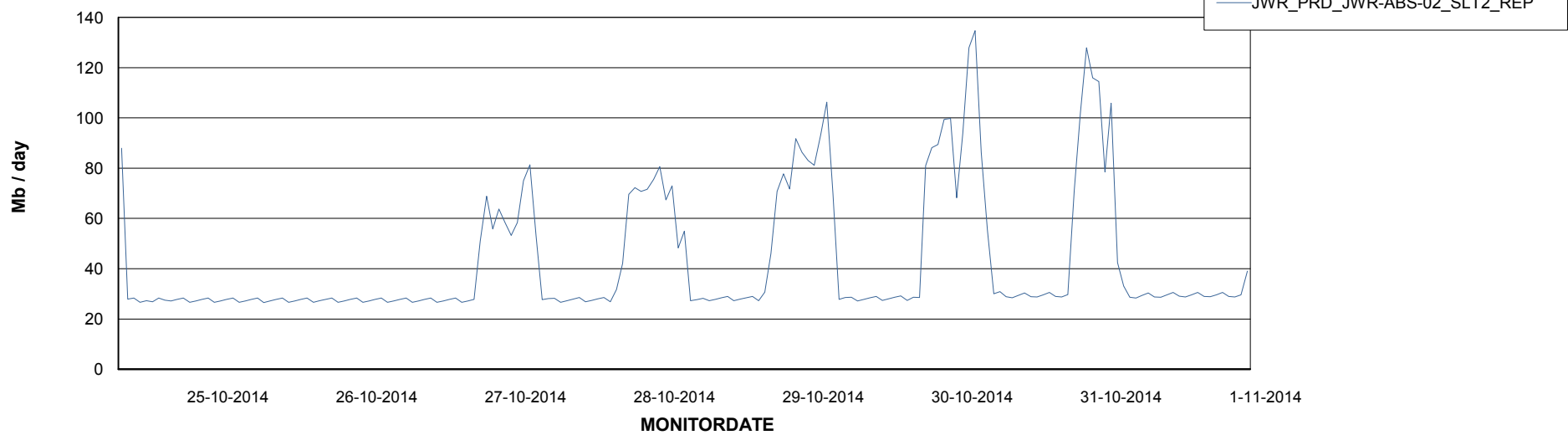


=====
ABSolute Application ReportServer Services
=====

Disaster per ReportServer



Avg memory used per ReportServer Service



Weekly SLA Customer Report

Customer JWR Production
Database ID 43



Disaster per ABS component

