

Weekly SLA Customer Report

Customer BCH Production
 Database ID 28



=====
 HARDDISK USAGE BCH_PRD_ORCDB1
 =====

	Total disk space on C (GB)	Free disk space on C (GB)	Total disk space on D (GB)	Free disk space on D (GB)
1-11-2014	278	159	278	59
31-10-2014	278	160	278	62
30-10-2014	278	160	278	65
29-10-2014	278	160	278	68
28-10-2014	278	160	278	71
27-10-2014	278	160	278	73
26-10-2014	278	160	278	75

=====
 HARDDISK USAGE BCH_PRD_ORCDB2
 =====

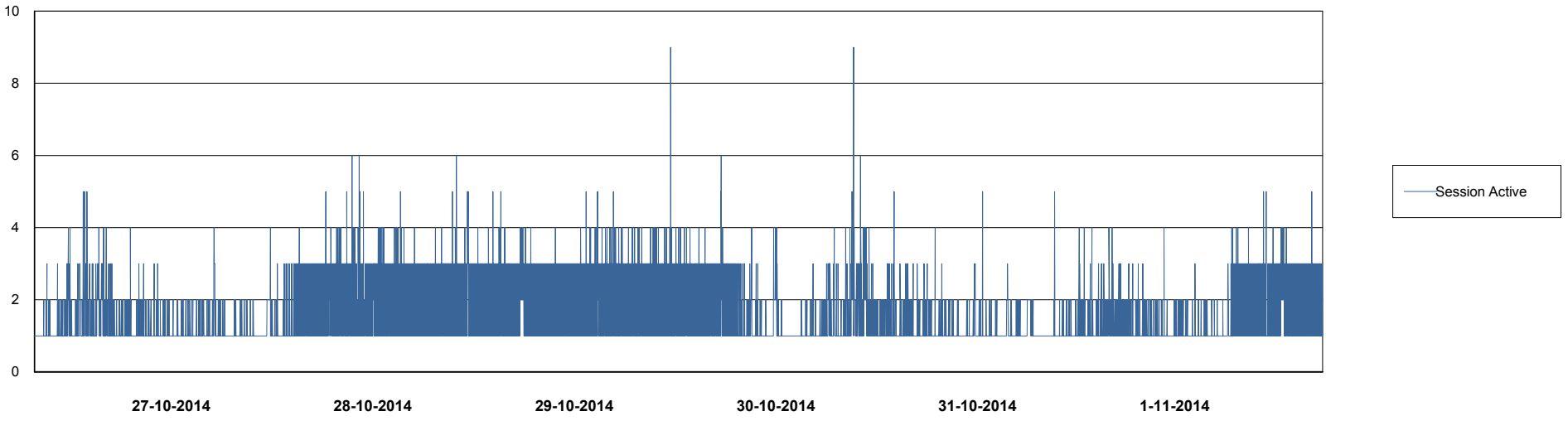
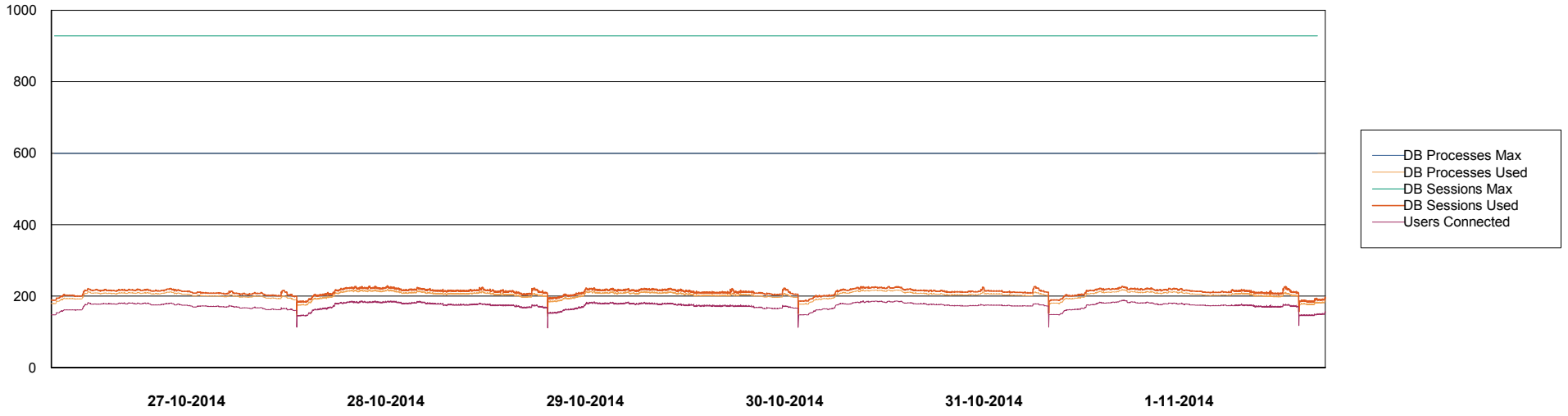
	Total disk space on C (GB)	Free disk space on C (GB)	Total disk space on D (GB)	Free disk space on D (GB)
1-11-2014	278	190	278	56
31-10-2014	278	190	278	59
30-10-2014	278	190	278	62
29-10-2014	278	190	278	65
28-10-2014	278	190	278	68
27-10-2014	278	190	278	70
26-10-2014	278	190	278	72

Weekly SLA Customer Report

Customer BCH Production
Database ID 28



=====
DATABASE PERFORMANCE BCHDB_Production
=====

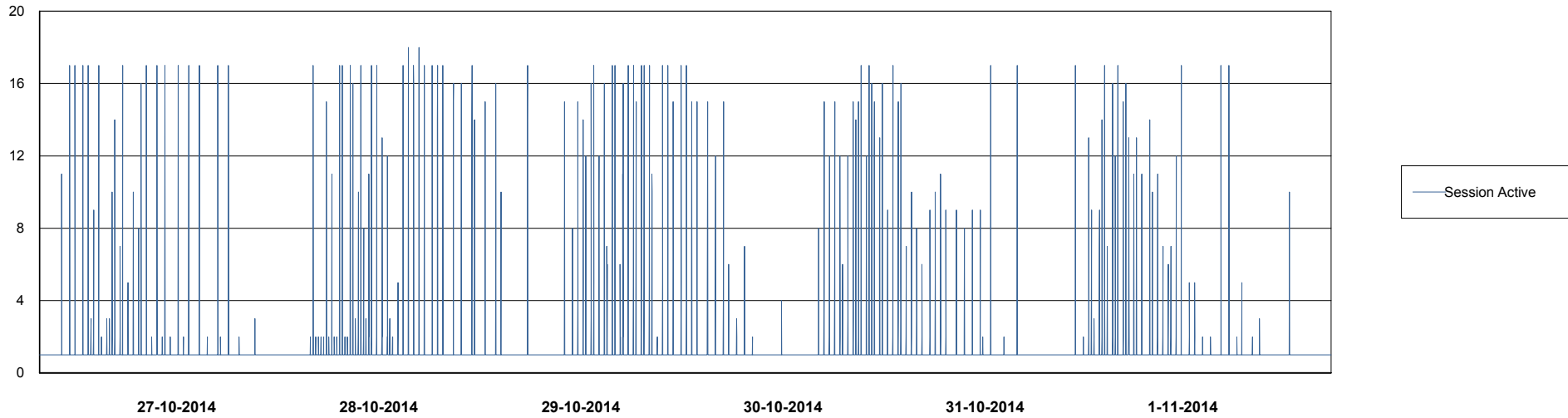
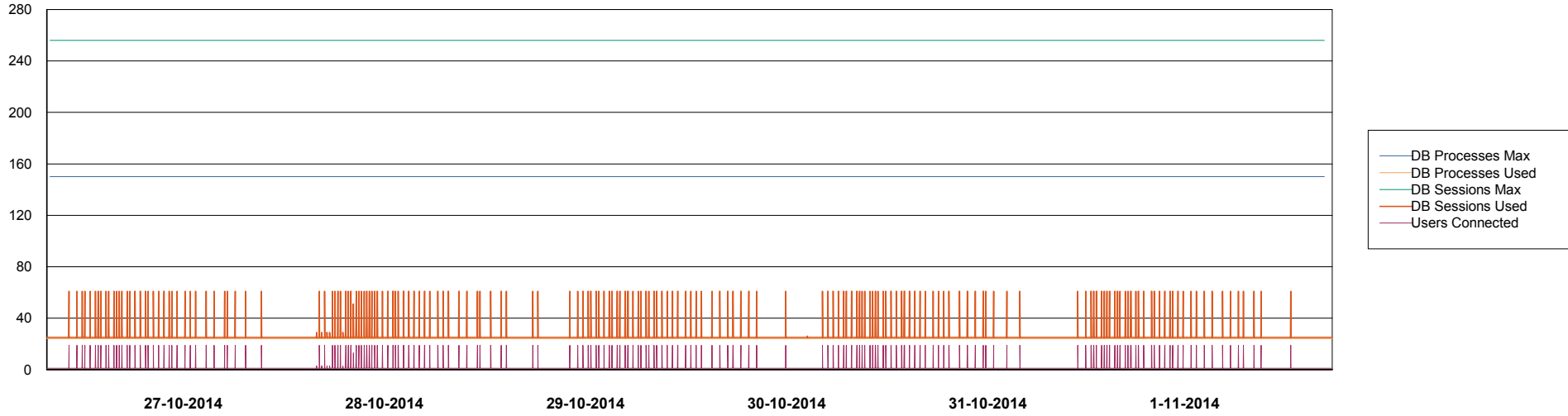


Weekly SLA Customer Report

Customer BCH Production
Database ID 28



=====
DATABASE PERFORMANCE BCHDB_Standby
=====



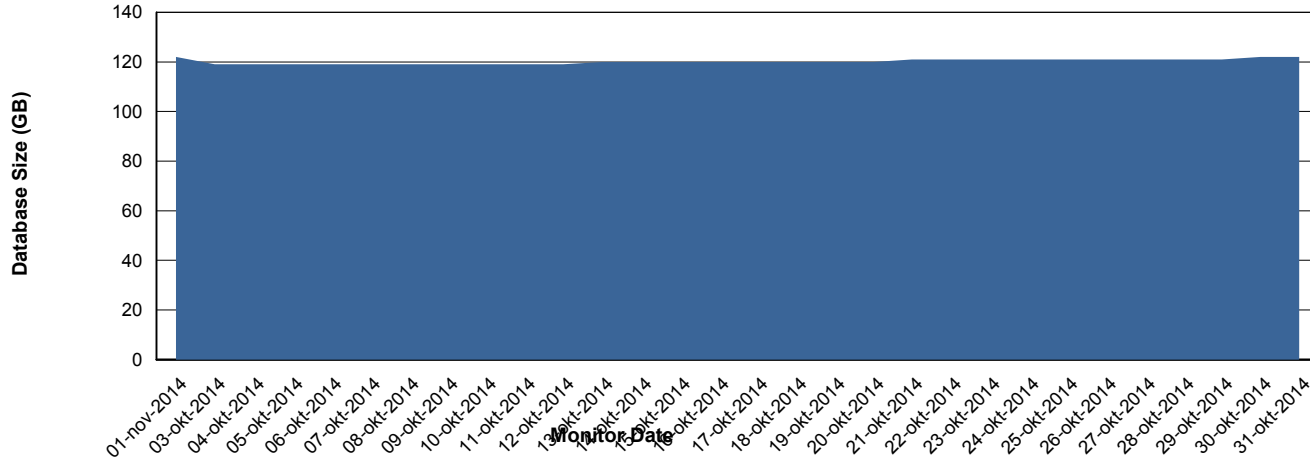
Weekly SLA Customer Report

Customer BCH Production
 Database ID 28



=====
 DATABASE SIZE BCHDB_Production
 =====

Database growth over last month



=====
 DATABASE TABLESPACES BCHDB_Production
 =====

TOTAL DATABASE SIZE PER TABLESPACE

Date	Tablespace Name	Filesize (Gb)	Usedsize (Gb)	Percentage free
1-11-2014	ABSDATA	27	23	15
	INDX	114	97	15
31-10-2014	ABSDATA	27	23	15
	INDX	114	97	15
30-10-2014	ABSDATA	27	23	15
	INDX	114	97	15
29-10-2014	ABSDATA	27	23	15
	INDX	114	97	15
28-10-2014	ABSDATA	27	23	15
	INDX	114	97	15
27-10-2014	ABSDATA	27	23	15
	INDX	114	97	15
26-10-2014	ABSDATA	27	23	15
	INDX	114	96	16

Weekly SLA Customer Report

Customer BCH Production
Database ID 28



=====
STANDBY DATABASE HEALTH BCH Production
=====

Recovery lag for last 7 days

