

Weekly SLA Customer Report

Customer WBL_Production
Database ID 40

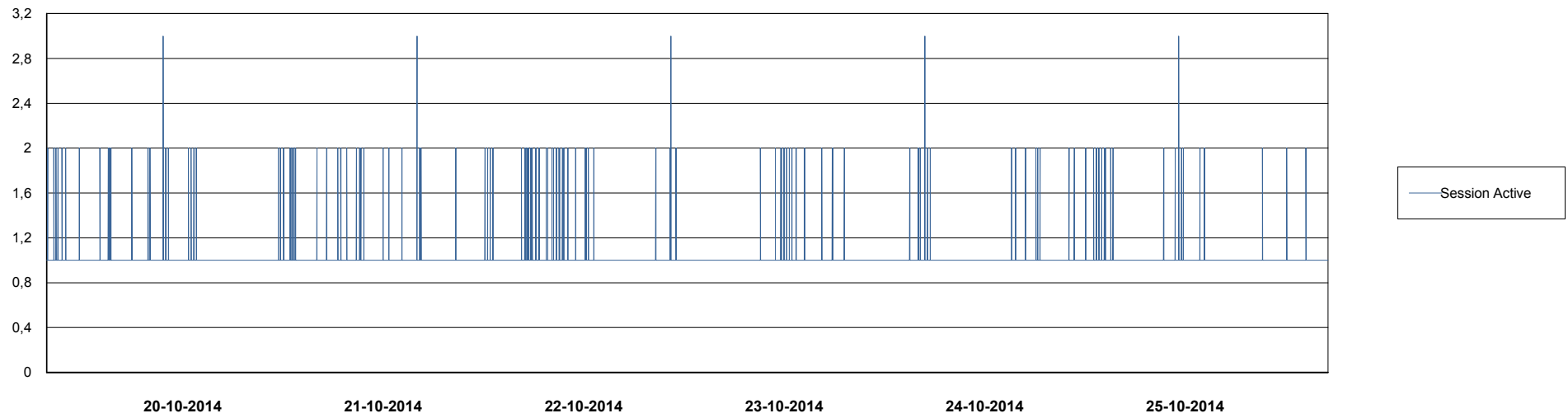
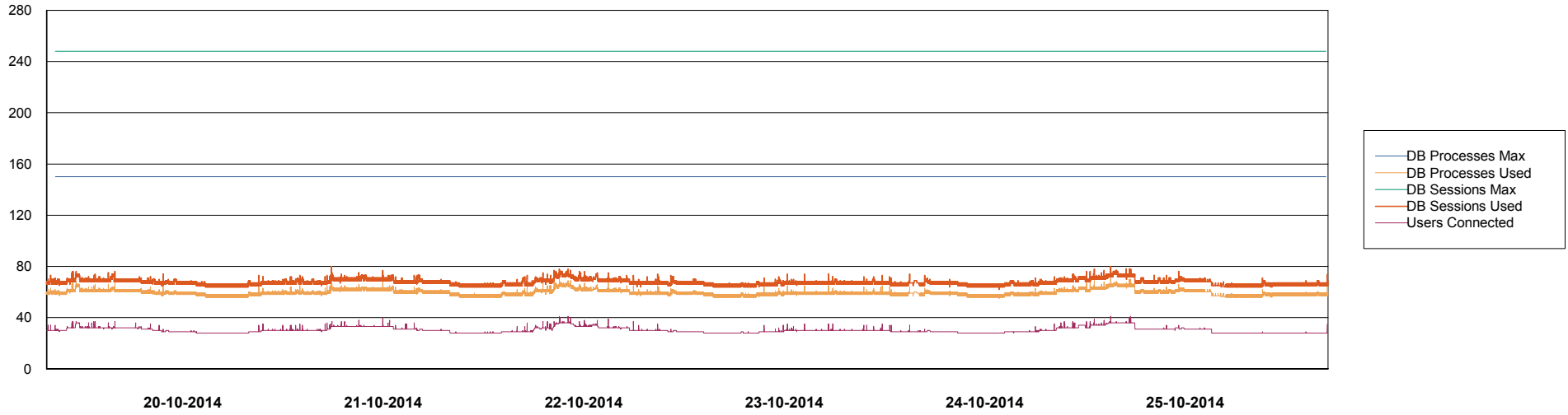


Weekly SLA Customer Report

Customer WBL_Production
Database ID 40



DATABASE PERFORMANCE WBLDB_Production

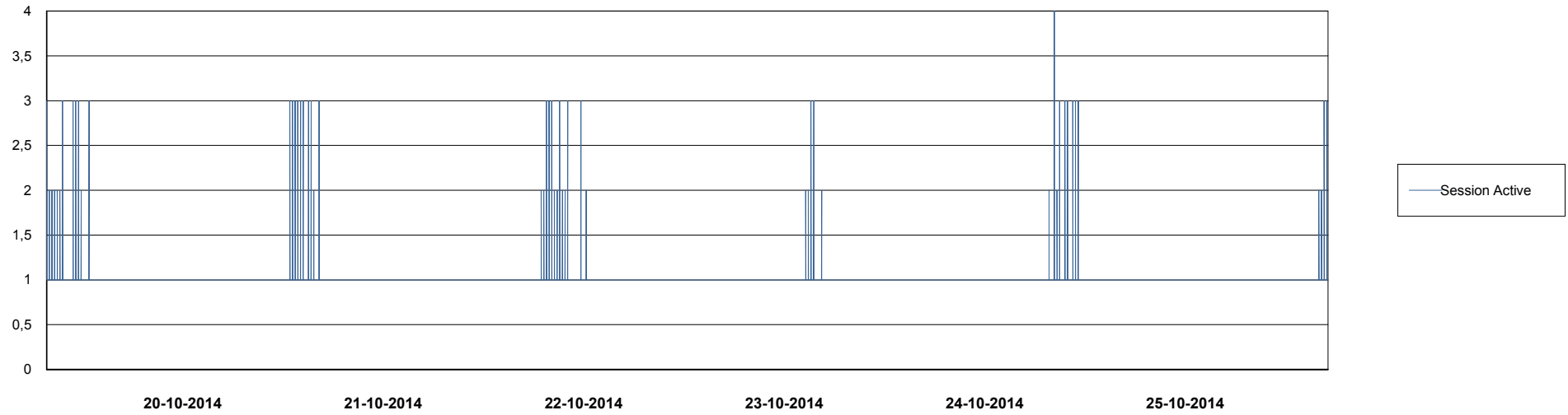
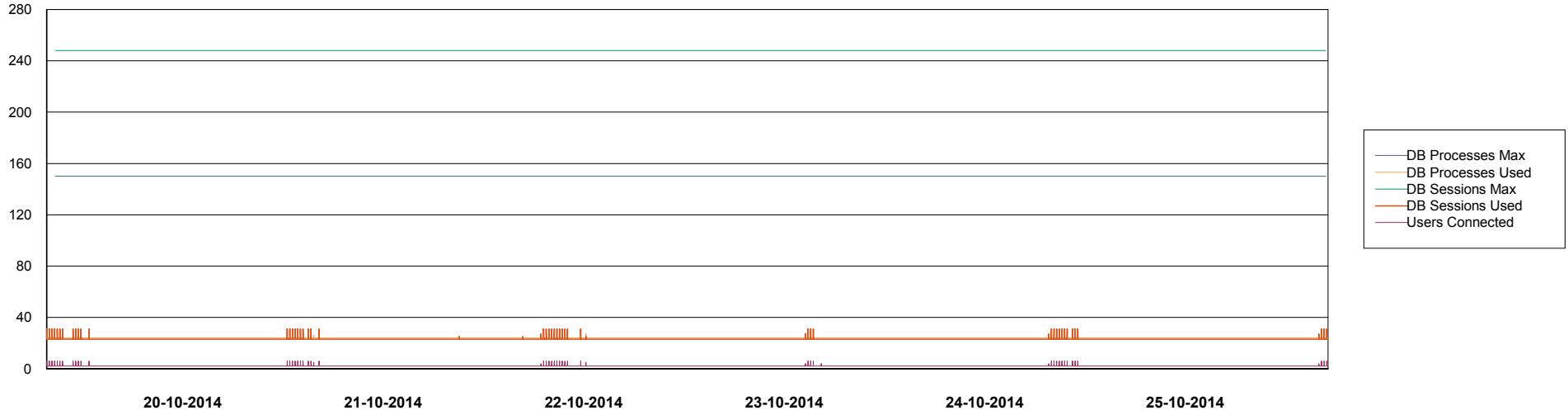


Weekly SLA Customer Report

Customer WBL_Production
Database ID 40



DATABASE PERFORMANCE WBLDB_Standby



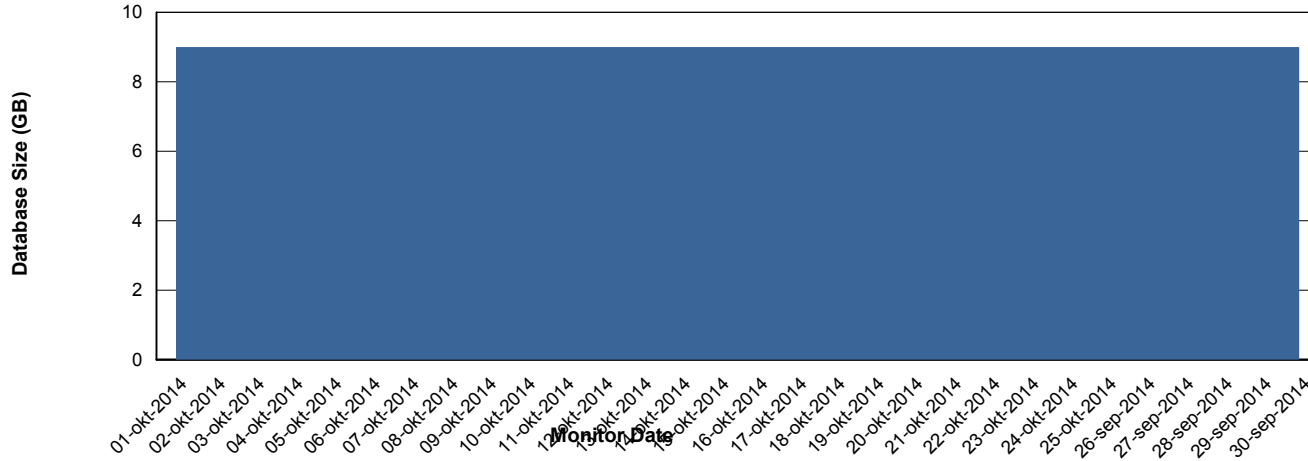
Weekly SLA Customer Report

Customer WBL_Production
 Database ID 40



=====
 DATABASE SIZE WBLDB_Production
 =====

Database growth over last month



=====
 DATABASE TABLESPACES WBLDB_Production
 =====

TOTAL DATABASE SIZE PER TABLESPACE

Date	Tablespace Name	Filesize (Gb)	Usedsize (Gb)	Percentage free
25-10-2014	ABSDATA	6	4	33
	INDX	5	4	20
24-10-2014	ABSDATA	6	4	33
	INDX	5	4	20
23-10-2014	ABSDATA	6	4	33
	INDX	5	4	20
22-10-2014	ABSDATA	6	4	33
	INDX	5	4	20
21-10-2014	ABSDATA	6	4	33
	INDX	5	4	20
20-10-2014	ABSDATA	6	4	33
	INDX	5	4	20
19-10-2014	ABSDATA	6	4	33
	INDX	5	4	20

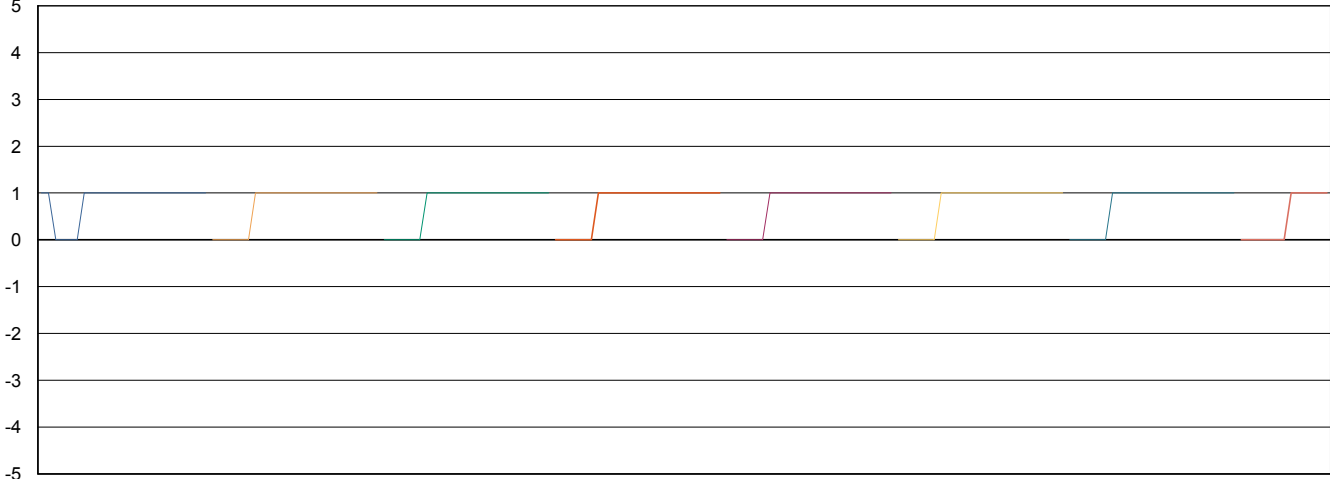
Weekly SLA Customer Report

Customer WBL_Production
Database ID 40



=====
STANDBY DATABASE HEALTH WBL_Production
=====

Recovery lag for last 7 days



- 18-10-2014
- 19-10-2014
- 20-10-2014
- 21-10-2014
- 22-10-2014
- 23-10-2014
- 24-10-2014
- 25-10-2014