

Weekly SLA Customer Report

Customer RFL_Production
Database ID 36



=====
HARDDISK USAGE RFL_PRD_ORACLE1
=====

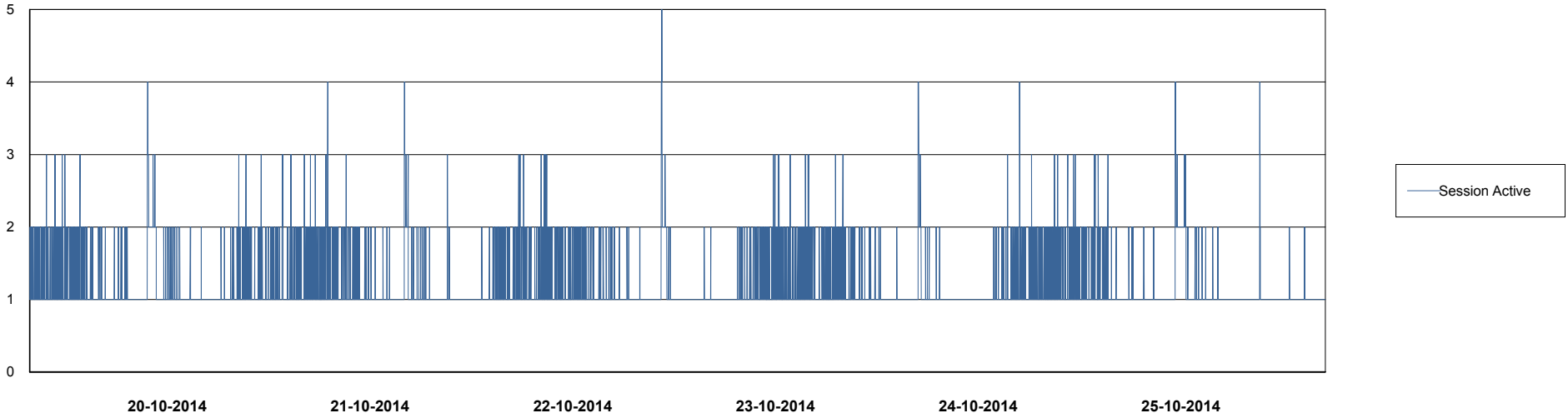
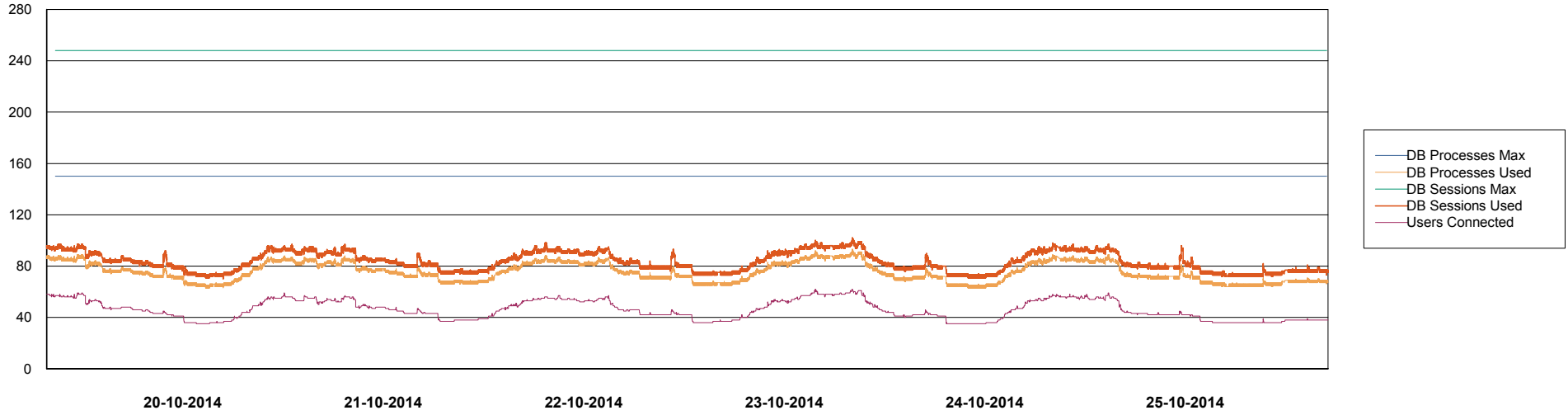
	Total disk space on C (GB)	Free disk space on C (GB)	Total disk space on D (GB)	Free disk space on D (GB)	Total disk space on E (GB)	Free disk space on E (GB)
25-10-2014	279	128	137	100	137	64
24-10-2014	279	128	137	100	137	64
23-10-2014	279	128	137	100	137	65
22-10-2014	279	128	137	100	137	66
21-10-2014	279	130	137	100	137	66
20-10-2014	279	131	137	100	137	67
19-10-2014	279	131	137	100	137	67

Weekly SLA Customer Report

Customer RFL_Production
Database ID 36



DATABASE PERFORMANCE RFLDB_Production

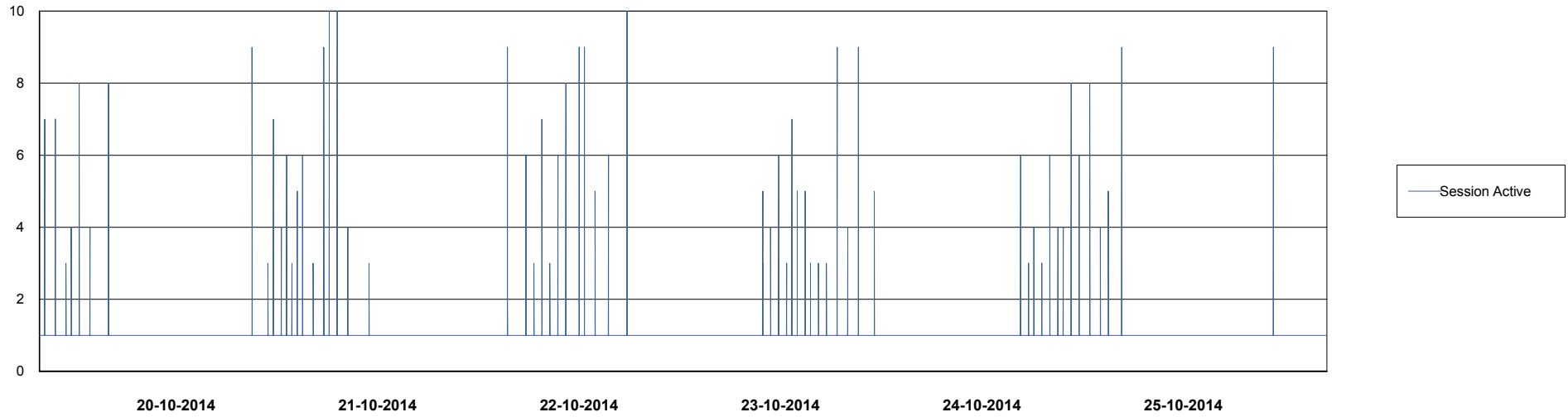
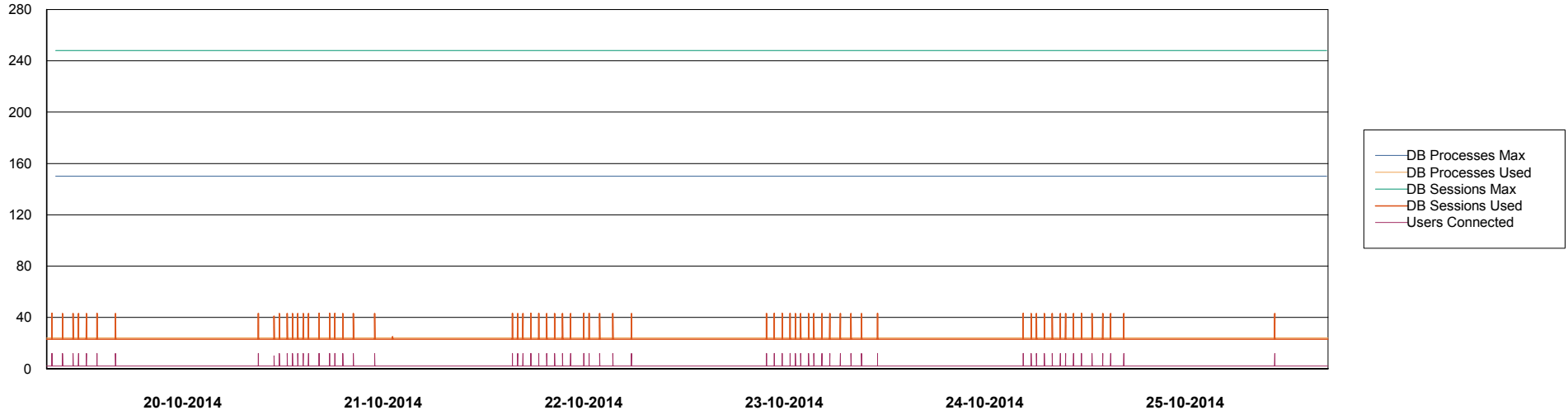


Weekly SLA Customer Report

Customer RFL_Production
Database ID 36



=====
DATABASE PERFORMANCE RFLDB_Standby
=====



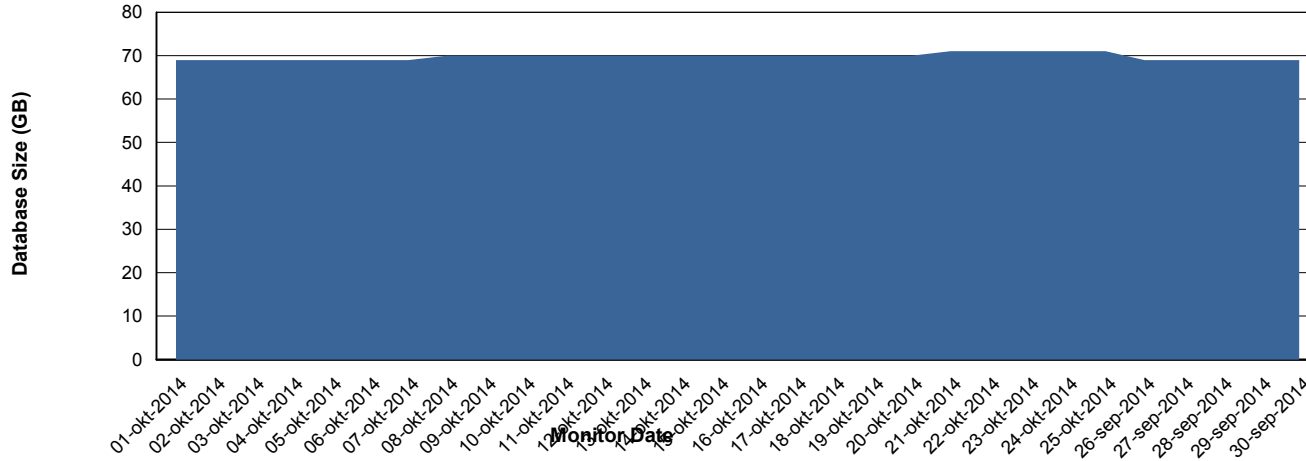
Weekly SLA Customer Report

Customer RFL_Production
 Database ID 36



=====
 DATABASE SIZE RFLDB_Production
 =====

Database growth over last month



=====
 DATABASE TABLESPACES RFLDB_Production
 =====

TOTAL DATABASE SIZE PER TABLESPACE

Date	Tablespace Name	Filesize (Gb)	Usedsize (Gb)	Percentage free
25-10-2014	ABSDATA	21	18	14
	INDX	63	52	17
24-10-2014	ABSDATA	21	18	14
	INDX	63	52	17
23-10-2014	ABSDATA	21	17	19
	INDX	63	52	17
22-10-2014	ABSDATA	21	17	19
	INDX	63	52	17
21-10-2014	ABSDATA	21	17	19
	INDX	63	52	17
20-10-2014	ABSDATA	21	17	19
	INDX	60	52	13
19-10-2014	ABSDATA	21	17	19
	INDX	60	52	13

Weekly SLA Customer Report

Customer RFL_Production
Database ID 36



=====
STANDBY DATABASE HEALTH RFL_Production
=====

Recovery lag for last 7 days

