

# Weekly SLA Customer Report

Customer PCO Production  
 Database ID 44



=====  
 HARDDISK USAGE PCO\_PRD\_ORACLE1  
 =====

	Total disk space on C (GB)	Free disk space on C (GB)	Total disk space on D (GB)	Free disk space on D (GB)
25-10-2014	279	218	838	145
24-10-2014	279	218	838	147
23-10-2014	279	218	838	152
22-10-2014	279	218	838	158
21-10-2014	279	218	838	161
20-10-2014	279	218	838	142
19-10-2014	279	218	838	116

=====  
 HARDDISK USAGE PCO\_PRD\_ORACLE2  
 =====

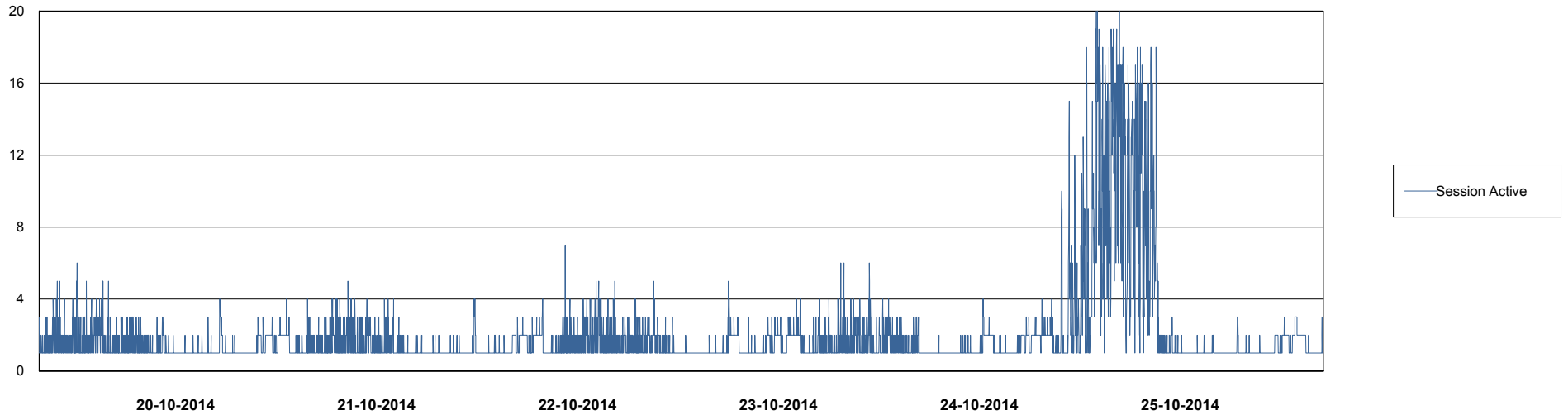
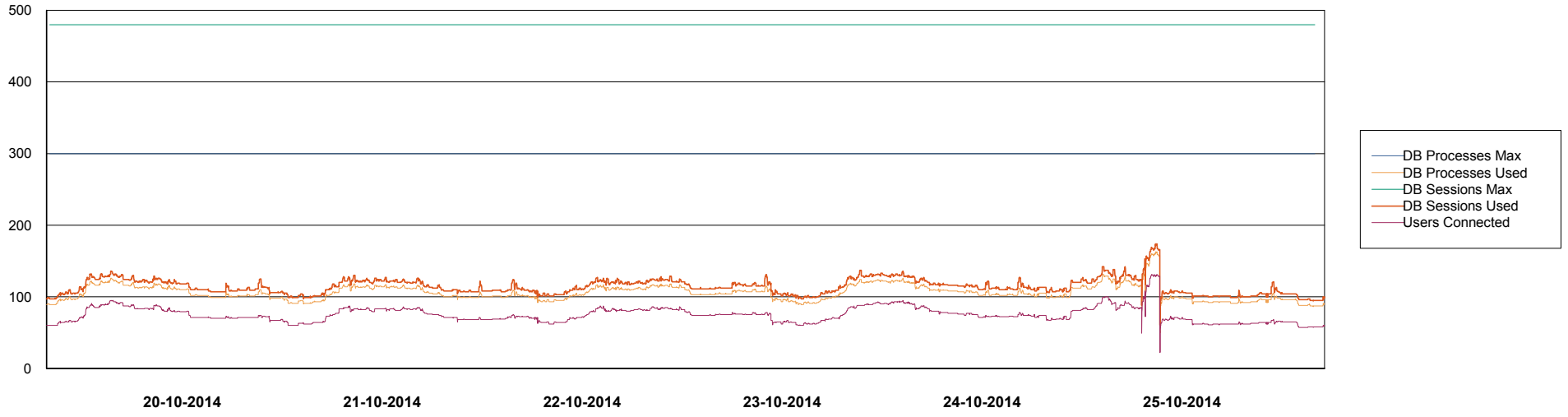
	Total disk space on C (GB)	Free disk space on C (GB)	Total disk space on D (GB)	Free disk space on D (GB)
25-10-2014	279	223	838	569
24-10-2014	279	223	838	571
23-10-2014	279	223	838	574
22-10-2014	279	224	838	577
21-10-2014	279	224	838	580
20-10-2014	279	223	838	561
19-10-2014	279	223	838	534

# Weekly SLA Customer Report

Customer PCO Production  
Database ID 44



## DATABASE PERFORMANCE PCODB\_Production

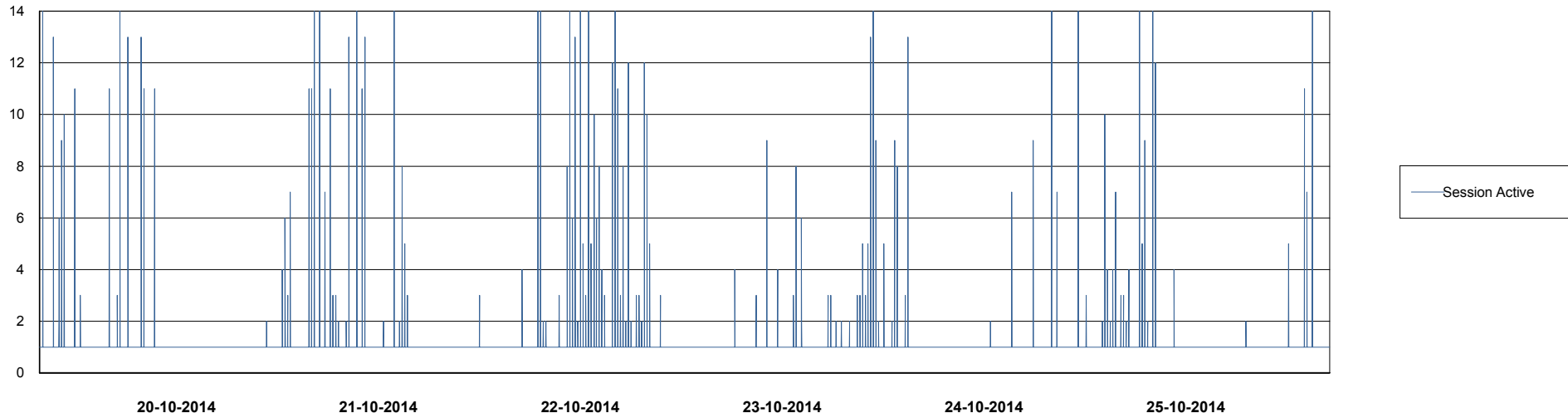
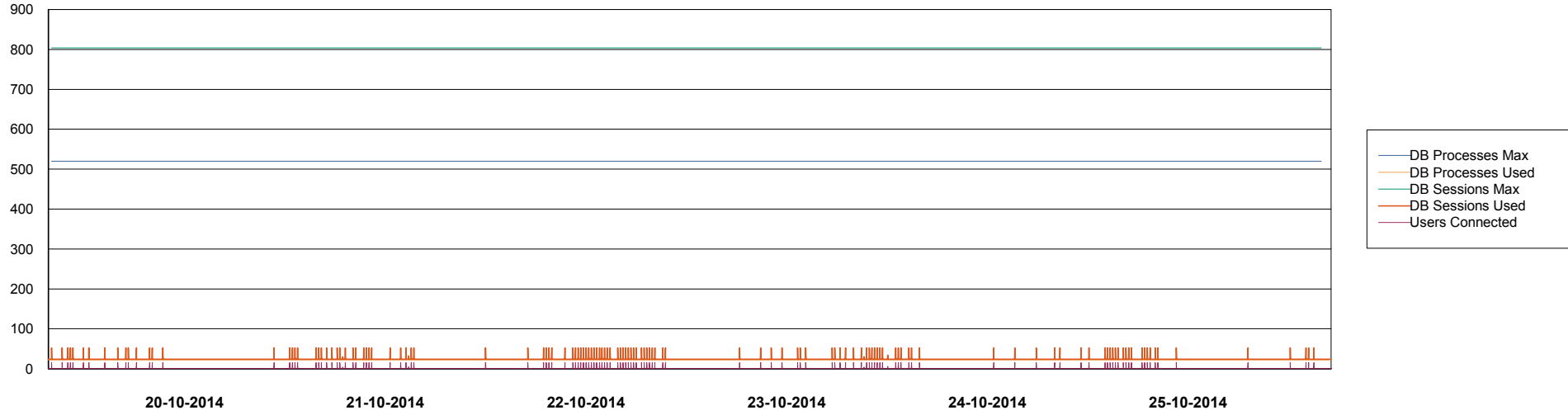


# Weekly SLA Customer Report

Customer PCO Production  
Database ID 44



## DATABASE PERFORMANCE PCODB\_Standby



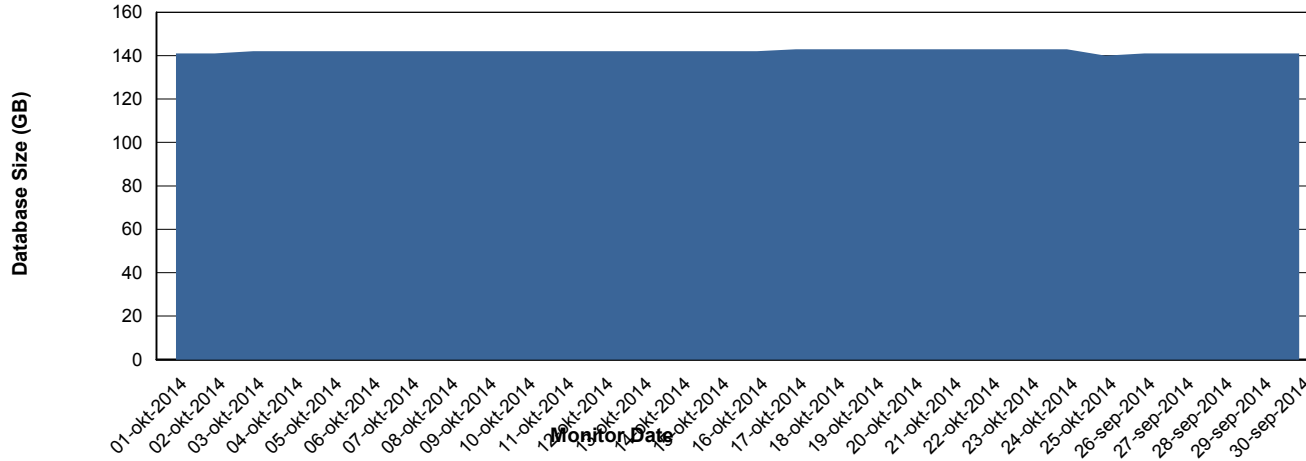
# Weekly SLA Customer Report

Customer PCO Production  
 Database ID 44



=====  
 DATABASE SIZE PCODB\_Production  
 =====

## Database growth over last month



=====  
 DATABASE TABLESPACES PCODB\_Production  
 =====

### TOTAL DATABASE SIZE PER TABLESPACE

Date	Tablespace Name	Filesize (Gb)	Usedsize (Gb)	Percentage free
25-10-2014	ABSDATA	72	58	19
	INDX	99	81	18
24-10-2014	ABSDATA	72	58	19
	INDX	99	81	18
23-10-2014	ABSDATA	72	58	19
	INDX	99	81	18
22-10-2014	ABSDATA	72	58	19
	INDX	99	80	19
21-10-2014	ABSDATA	72	58	19
	INDX	99	80	19
20-10-2014	ABSDATA	72	58	19
	INDX	99	80	19
19-10-2014	ABSDATA	72	58	19
	INDX	99	80	19

# Weekly SLA Customer Report

Customer PCO Production  
Database ID 44



=====  
STANDBY DATABASE HEALTH PCO Production  
=====

### Recovery lag for last 7 days

