

Weekly SLA Customer Report

Customer NIX_Production
 Database ID 51



=====
 HARDDISK USAGE NIX_PRD_ABSAPP1
 =====

	Total disk space on C (GB)	Free disk space on C (GB)
25-10-2014	136	84
24-10-2014	136	84
23-10-2014	136	84
22-10-2014	136	84
21-10-2014	136	84
20-10-2014	136	84
19-10-2014	136	85

=====
 HARDDISK USAGE NIX_PRD_ABSWEB1
 =====

	Total disk space on C (GB)	Free disk space on C (GB)
25-10-2014	930	731
24-10-2014	930	731
23-10-2014	930	731
22-10-2014	930	731
21-10-2014	930	731
20-10-2014	930	730
19-10-2014	930	731

Weekly SLA Customer Report

Customer NIX_Production
 Database ID 51



=====
 HARDDISK USAGE NIX_PRD_ORACLE_BI1
 =====

	Total disk space on C (GB)	Free disk space on C (GB)	Total disk space on D (GB)	Free disk space on D (GB)	Total disk space on E (GB)	Free disk space on E (GB)
25-10-2014	40	8	279	179	236	168
24-10-2014	40	8	279	179	236	168
23-10-2014	40	8	279	179	236	168
22-10-2014	40	8	279	179	236	176
21-10-2014	40	8	279	179	236	192
20-10-2014	40	7	279	179	236	200
19-10-2014	40	6	279	179	236	191

=====
 HARDDISK USAGE NIX_PRD_ORCDB1
 =====

	Total disk space on C (GB)	Free disk space on C (GB)	Total disk space on D (GB)	Free disk space on D (GB)	Total disk space on E (GB)	Free disk space on E (GB)
25-10-2014	136	69	136	36	136	50
24-10-2014	136	69	136	36	136	52
23-10-2014	136	69	136	36	136	52
22-10-2014	136	69	136	36	136	52
21-10-2014	136	69	136	36	136	52
20-10-2014	136	69	136	36	136	52
19-10-2014	136	69	136	36	136	52

Weekly SLA Customer Report

Customer NIX_Production
Database ID 51



HARDDISK USAGE NIX_PRD_ORCDB2

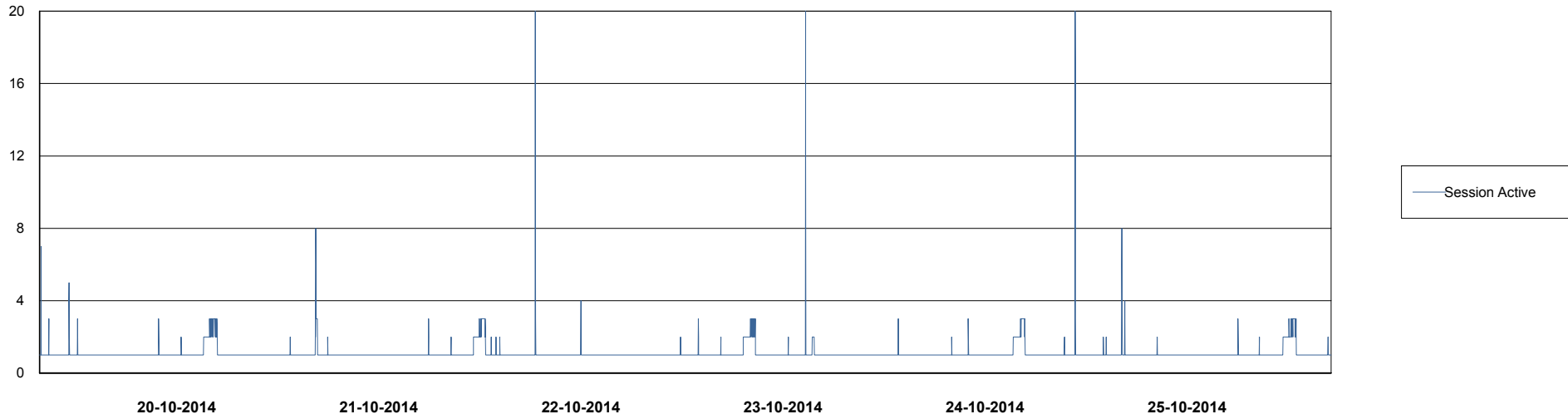
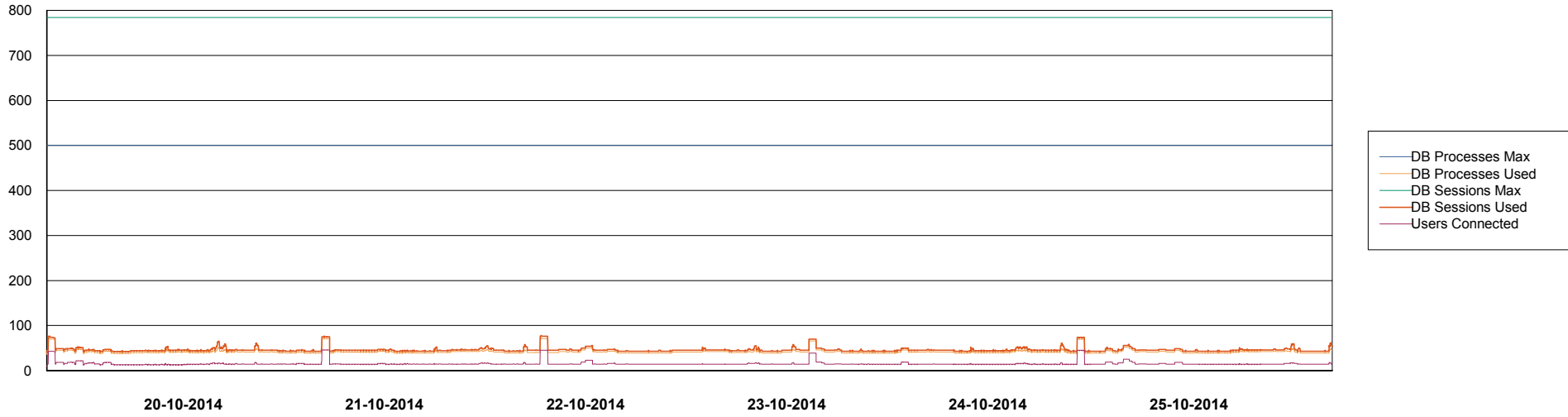
	Total disk space on C (GB)	Free disk space on C (GB)	Total disk space on D (GB)	Free disk space on D (GB)	Total disk space on E (GB)	Free disk space on E (GB)
25-10-2014	279	46	279	65	279	63
24-10-2014	279	46	279	65	279	60
23-10-2014	279	46	279	65	279	51
22-10-2014	279	46	279	65	279	68
21-10-2014	279	46	279	65	279	97
20-10-2014	279	46	279	65	279	126
19-10-2014	279	46	279	65	279	155

Weekly SLA Customer Report

Customer NIX_Production
Database ID 51



DATABASE PERFORMANCE NIXDB_BI



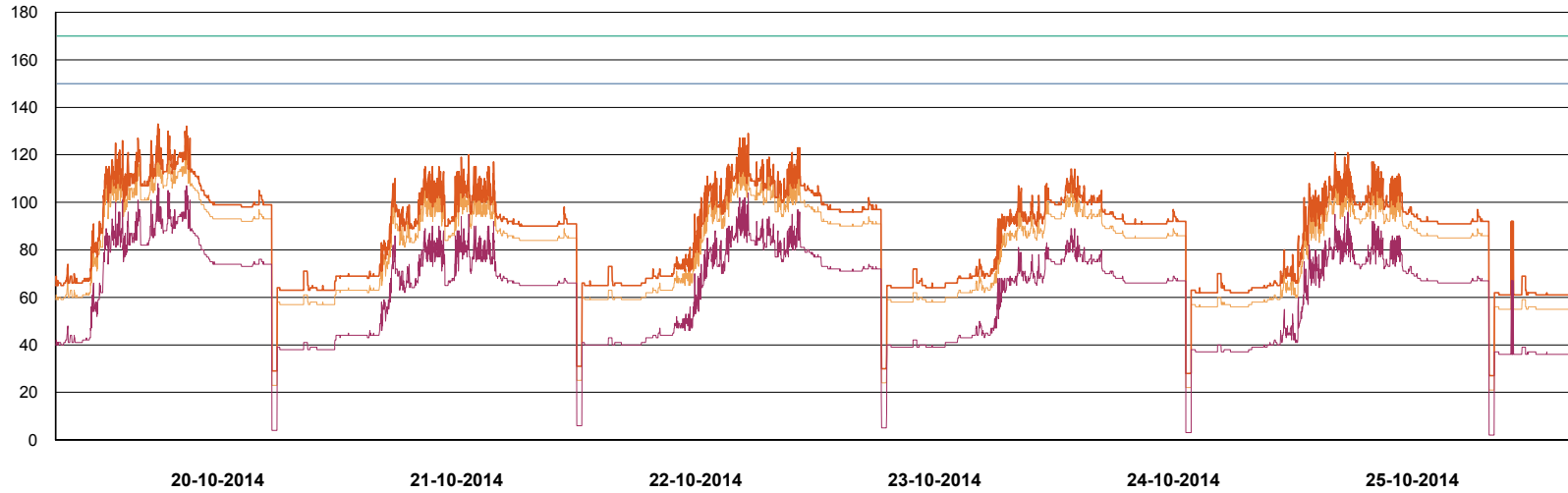
Weekly SLA Customer Report

Customer NIX_Production
Database ID 51

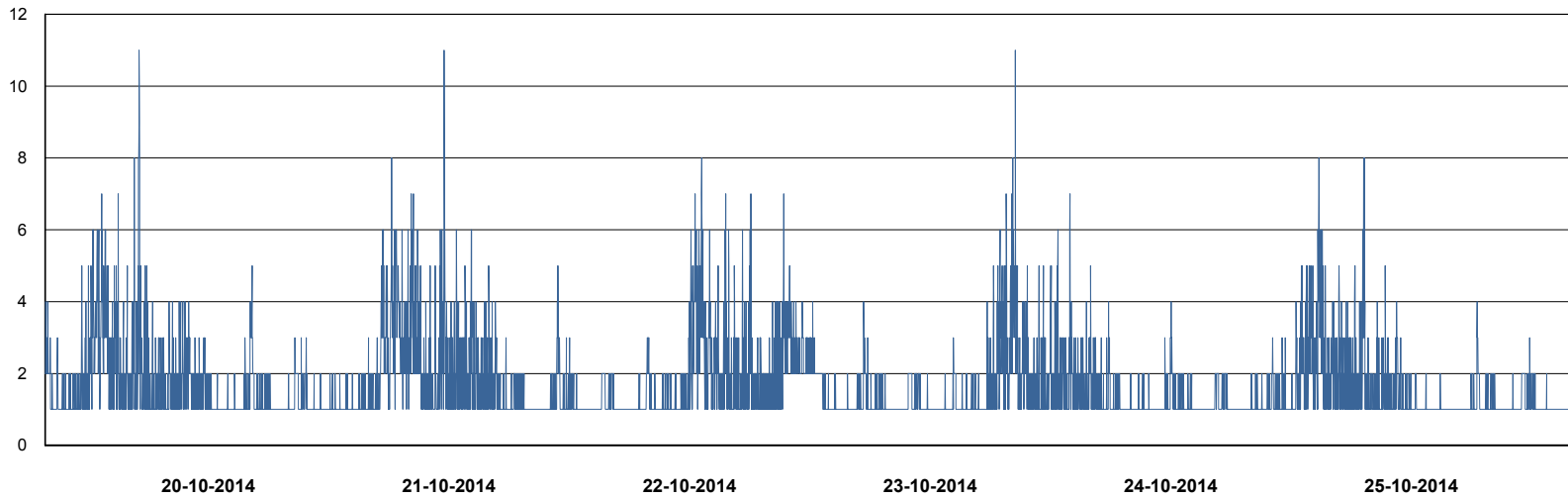


DATABASE PERFORMANCE

NIXDB_Production



- DB Processes Max
- DB Processes Used
- DB Sessions Max
- DB Sessions Used
- Users Connected



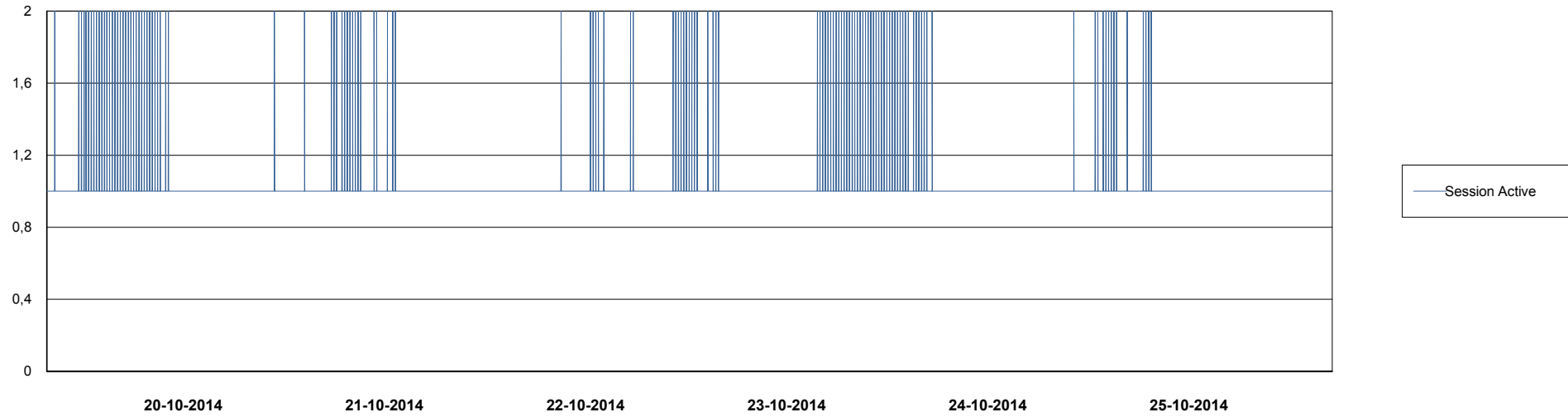
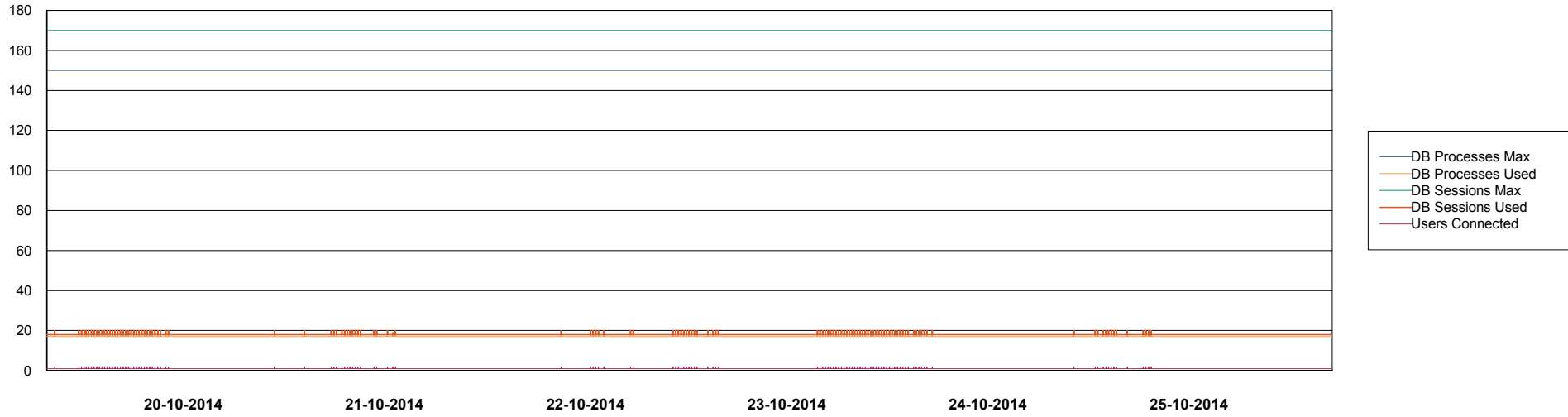
- Session Active

Weekly SLA Customer Report

Customer NIX_Production
Database ID 51



DATABASE PERFORMANCE NIXDB_Standby



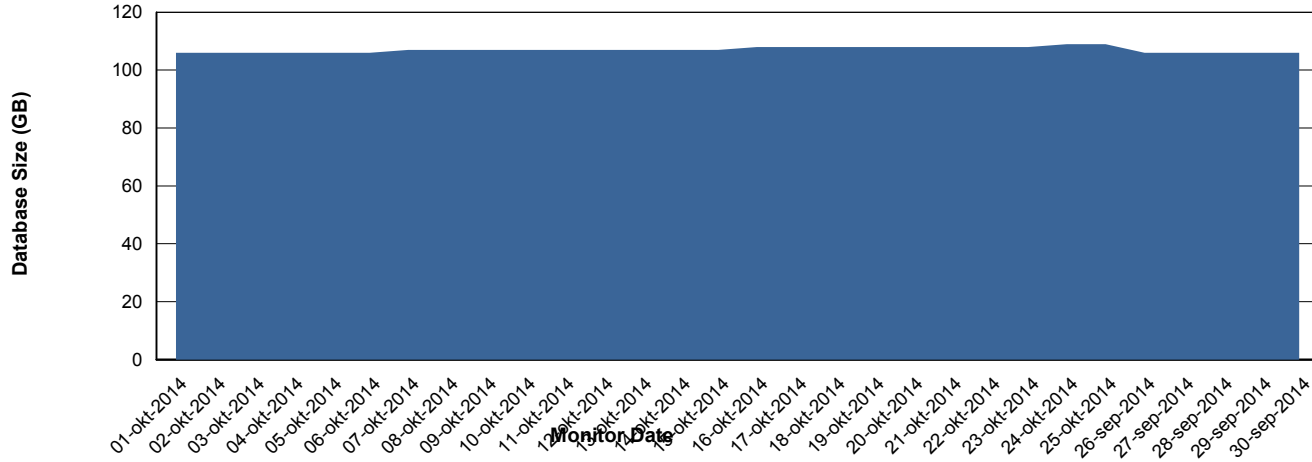
Weekly SLA Customer Report

Customer NIX_Production
Database ID 51



=====
DATABASE SIZE NIXDB_Production
=====

Database growth over last month



Weekly SLA Customer Report

Customer NIX_Production
Database ID 51



=====
DATABASE TABLESPACES NIXDB_BI
=====

TOTAL DATABASE SIZE PER TABLESPACE

Date	Tablespace Name	Filesize (Gb)	Usedsize (Gb)	Percentage free
25-10-2014	ABSDATA	20	18	10
	INDX	40	28	30
24-10-2014	ABSDATA	20	18	10
	INDX	40	28	30
23-10-2014	ABSDATA	20	17	15
	INDX	40	28	30
22-10-2014	ABSDATA	20	17	15
	INDX	40	27	33
21-10-2014	ABSDATA	20	17	15
	INDX	40	27	33
20-10-2014	ABSDATA	20	17	15
	INDX	40	27	33

Weekly SLA Customer Report

Customer NIX_Production
 Database ID 51



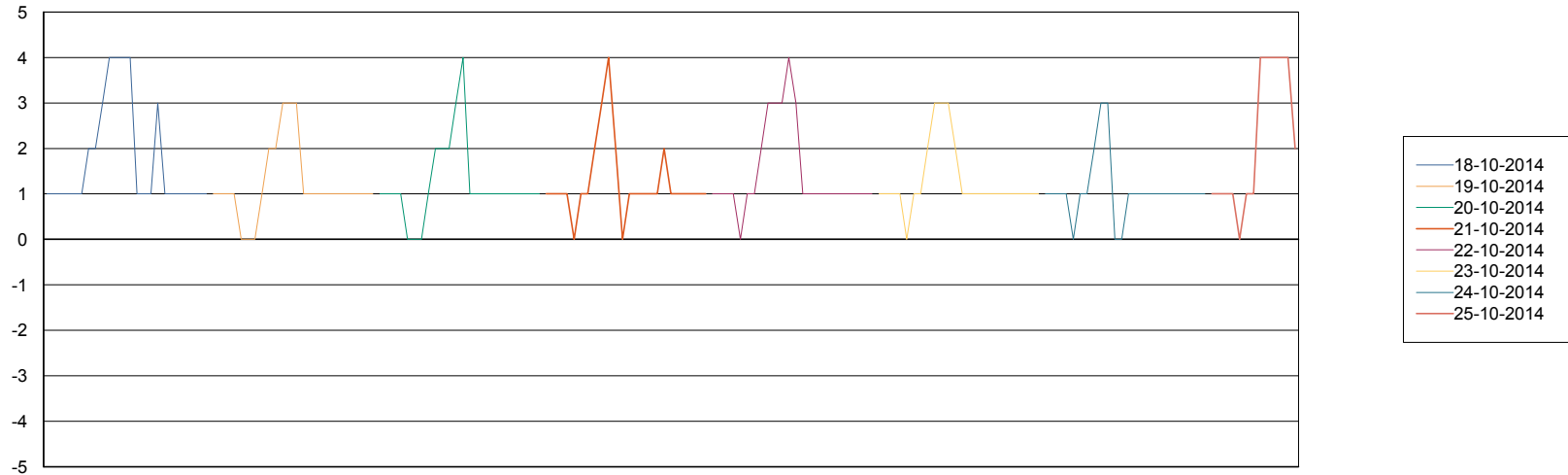
=====
 DATABASE TABLESPACES NIXDB_Production
 =====

TOTAL DATABASE SIZE PER TABLESPACE

Date	Tablespace Name	Filesize (Gb)	Usedsize (Gb)	Percentage free
25-10-2014	ABSDATA	40	28	30
	INDX	97	78	20
24-10-2014	ABSDATA	40	28	30
	INDX	97	78	20
23-10-2014	ABSDATA	40	28	30
	INDX	97	77	21
22-10-2014	ABSDATA	40	28	30
	INDX	97	77	21
21-10-2014	ABSDATA	40	28	30
	INDX	97	77	21
20-10-2014	ABSDATA	40	28	30
	INDX	97	77	21
19-10-2014	ABSDATA	40	28	30
	INDX	97	77	21

=====
 STANDBY DATABASE HEALTH NIX_Production
 =====

Recovery lag for last 7 days



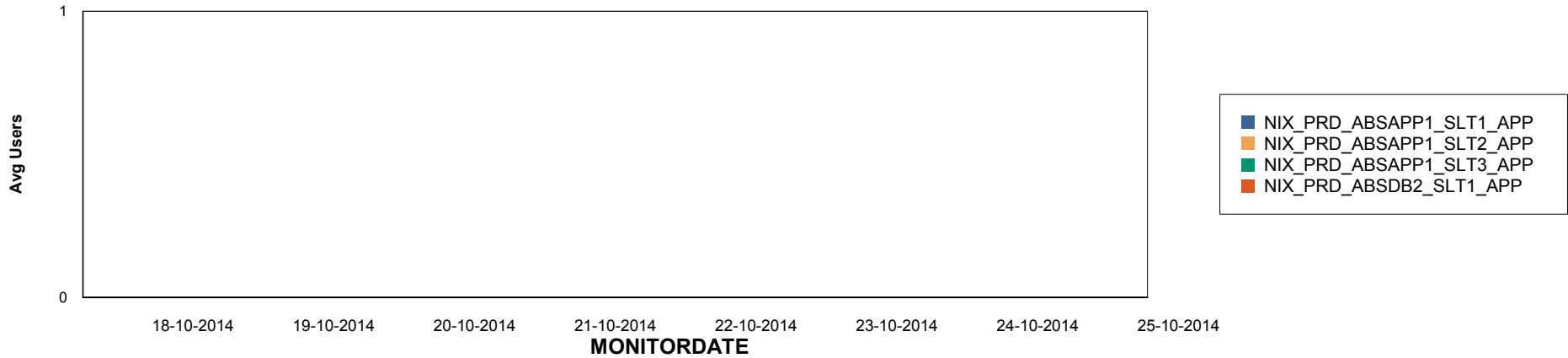
Weekly SLA Customer Report

Customer NIX_Production
Database ID 51

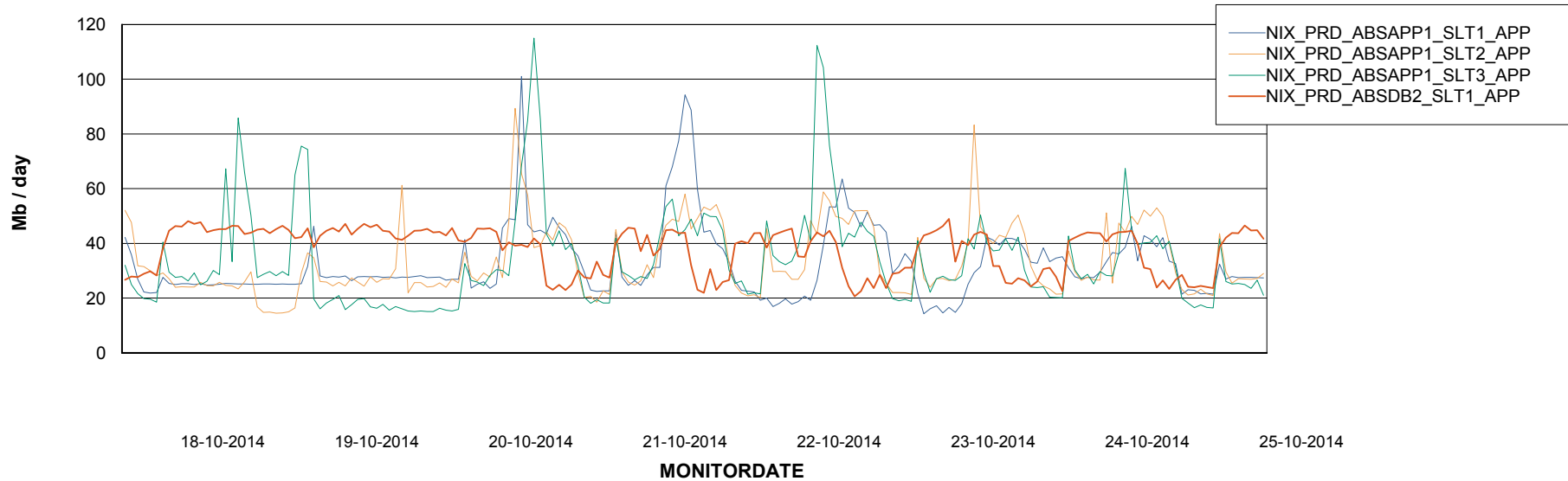


=====
ABSolute Application Server Services
=====

Disaster per ABS Server



Avg memory used per ABS Server Service



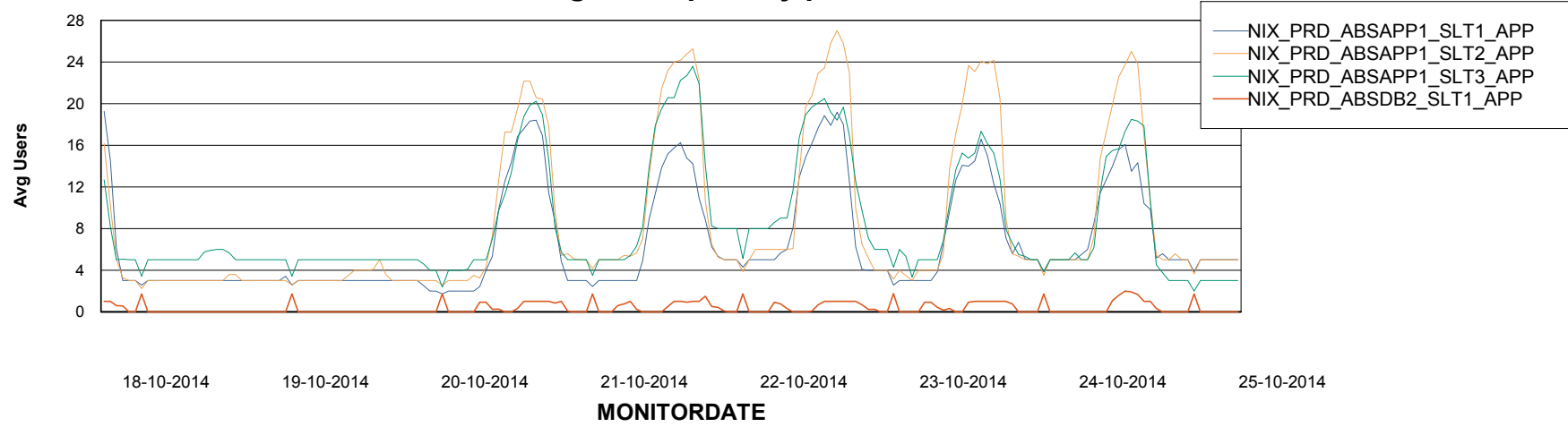
Weekly SLA Customer Report

Customer NIX_Production
Database ID 51



=====
ABSolute Application Server Services
=====

Avg users per day per ABS server



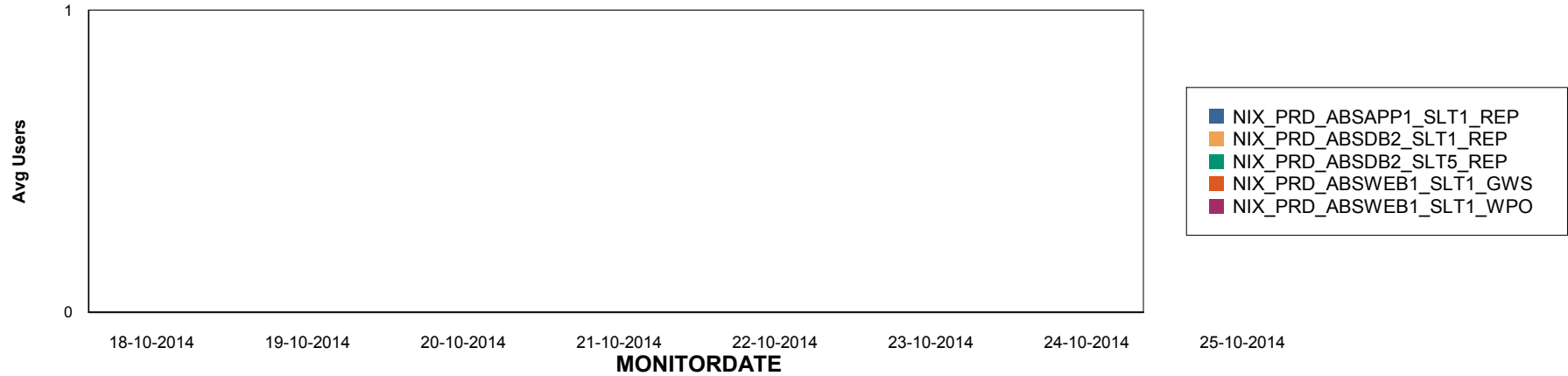
Weekly SLA Customer Report

Customer NIX_Production
Database ID 51

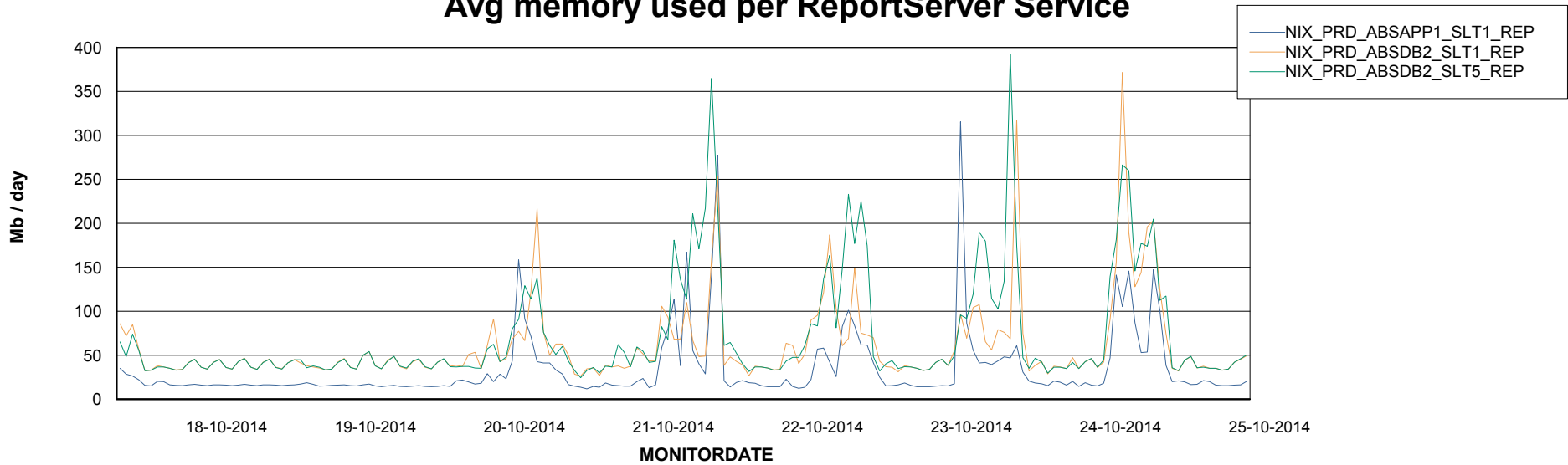


=====
ABSolute Application ReportServer Services
=====

Disaster per ReportServer



Avg memory used per ReportServer Service



Weekly SLA Customer Report

Customer NIX_Production
Database ID 51



Disaster per ABS component

