

Weekly SLA Customer Report

Customer LLG_Production
 Database ID 53



=====
 HARDDISK USAGE LLG_PRD_BI01
 =====

	Total disk space on C (GB)	Free disk space on C (GB)
25-10-2014	559	398
24-10-2014	559	398
23-10-2014	559	398
22-10-2014	559	398
21-10-2014	559	398
20-10-2014	559	398
19-10-2014	559	398

=====
 HARDDISK USAGE LLG_PRD_OR01
 =====

	Total disk space on C (GB)	Free disk space on C (GB)	Total disk space on D (GB)	Free disk space on D (GB)
25-10-2014	279	178	600	147
24-10-2014	279	178	600	153
23-10-2014	279	178	600	160
22-10-2014	279	178	600	166
21-10-2014	279	178	600	173
20-10-2014	279	178	600	135
19-10-2014	279	178	600	82

Weekly SLA Customer Report

Customer LLG_Production
 Database ID 53



=====
 HARDDISK USAGE LLG_PRD_OR2
 =====

	Total disk space on C (GB)	Free disk space on C (GB)	Total disk space on D (GB)	Free disk space on D (GB)
25-10-2014	293	249	545	225
24-10-2014	293	249	545	225
23-10-2014	293	249	545	227
22-10-2014	293	249	545	228
21-10-2014	293	249	545	229
20-10-2014	293	249	545	186
19-10-2014	293	249	545	126

=====
 HARDDISK USAGE LLG_PRD_vABS01
 =====

	Total disk space on C (GB)	Free disk space on C (GB)	Total disk space on D (GB)	Free disk space on D (GB)
25-10-2014	150	58	150	146
24-10-2014	150	58	150	146
23-10-2014	150	56	150	146
22-10-2014	150	56	150	146
21-10-2014	150	56	150	146
20-10-2014	150	56	150	146
19-10-2014	150	56	150	146

Weekly SLA Customer Report

Customer LLG_Production
Database ID 53



HARDDISK USAGE LLG_PRD_vABS02

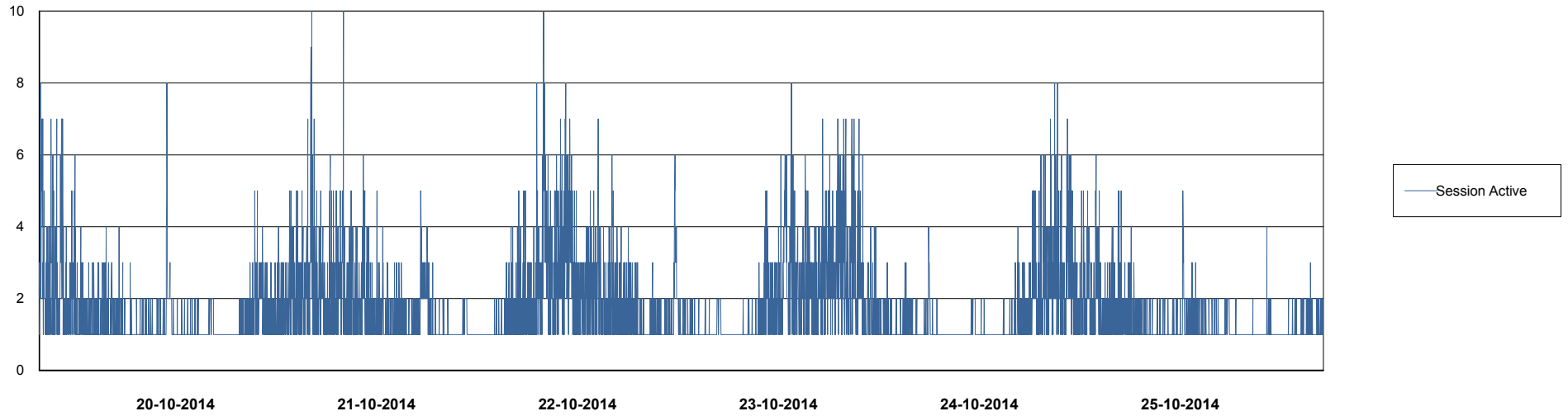
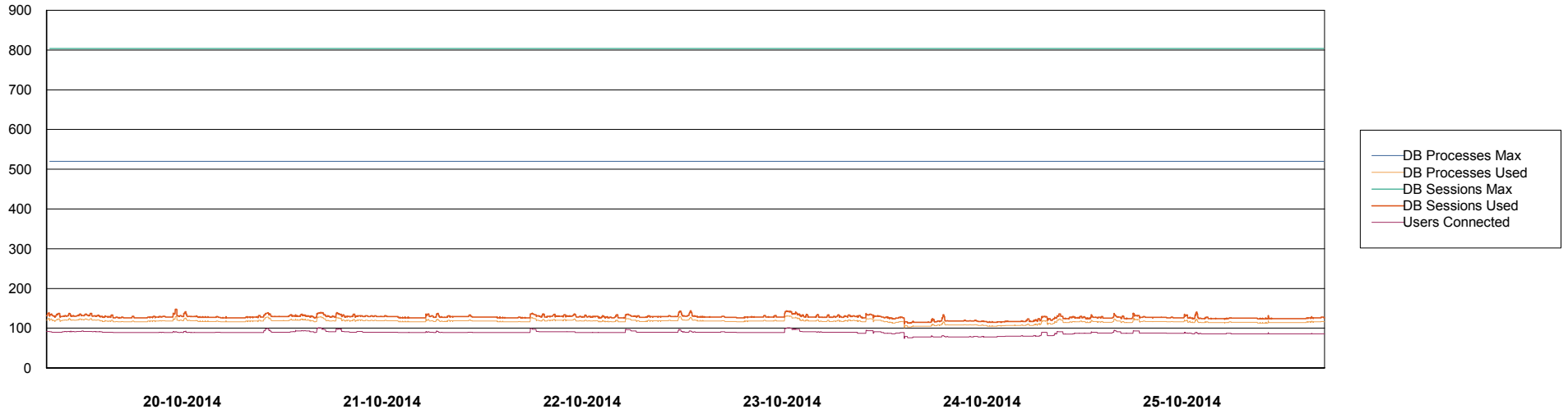
	Total disk space on C (GB)	Free disk space on C (GB)	Total disk space on D (GB)	Free disk space on D (GB)
25-10-2014	150	80	150	127
24-10-2014	150	80	150	127
23-10-2014	150	80	150	127
22-10-2014	150	80	150	127
21-10-2014	150	80	150	127
20-10-2014	150	80	150	127
19-10-2014	150	80	150	127

Weekly SLA Customer Report

Customer LLG_Production
Database ID 53



DATABASE PERFORMANCE LLGDB_Production

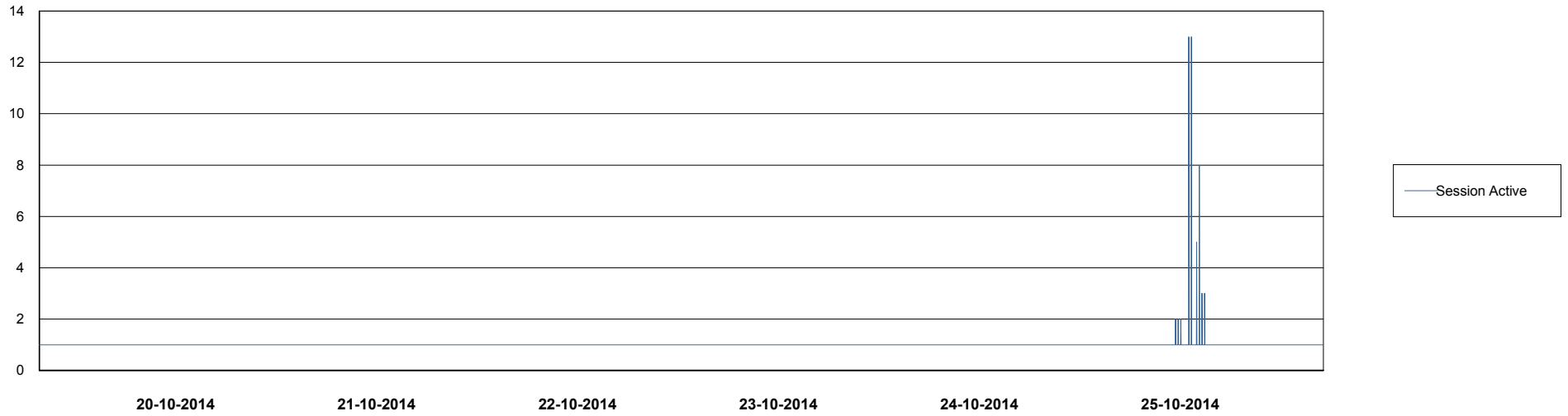
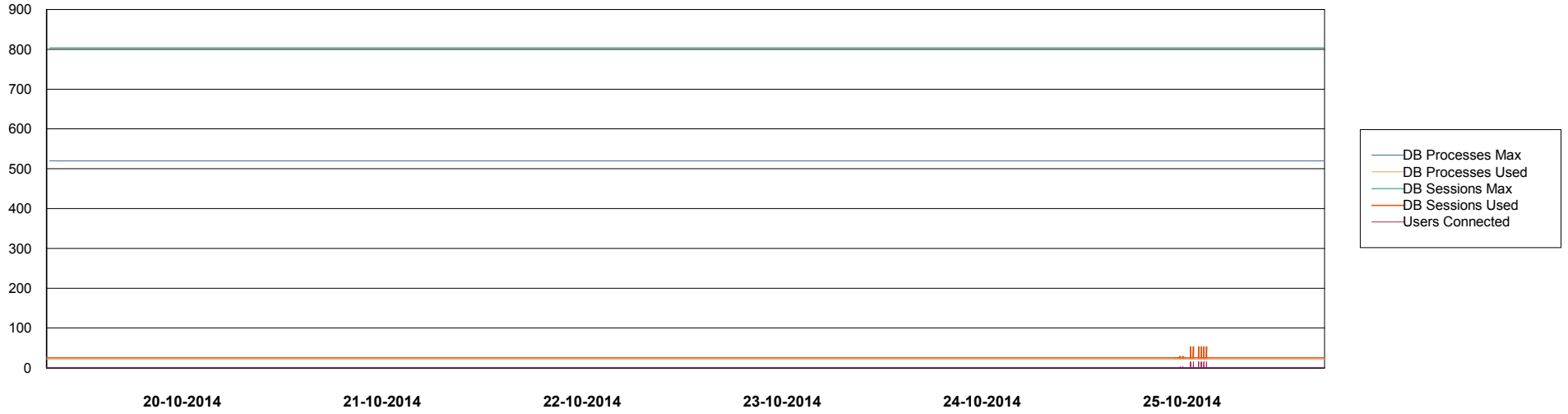


Weekly SLA Customer Report

Customer LLG_Production
Database ID 53



DATABASE PERFORMANCE LLGDB_Standby



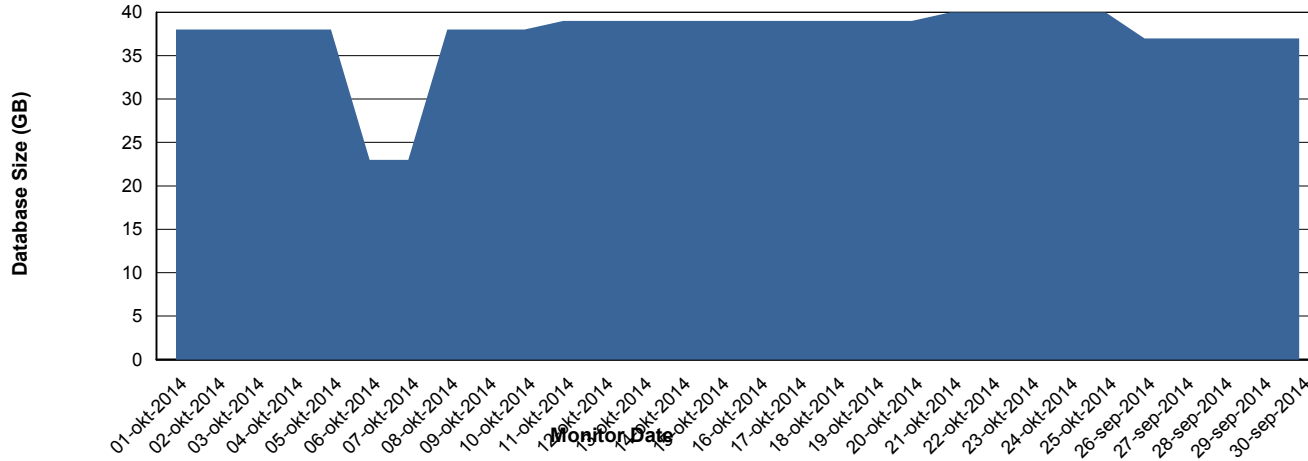
Weekly SLA Customer Report

Customer LLG_Production
 Database ID 53



DATABASE SIZE LLGDB_Production

Database growth over last month



DATABASE TABLESPACES LLGDB_Production

TOTAL DATABASE SIZE PER TABLESPACE

Date	Tablespace Name	Filesize (Gb)	Usedsize (Gb)	Percentage free
25-10-2014	ABSDATA	20	14	30
	INDX	40	24	40
24-10-2014	ABSDATA	20	14	30
	INDX	40	24	40
23-10-2014	ABSDATA	20	14	30
	INDX	40	24	40
22-10-2014	ABSDATA	20	14	30
	INDX	40	24	40
21-10-2014	ABSDATA	20	14	30
	INDX	40	24	40
20-10-2014	ABSDATA	20	14	30
	INDX	40	24	40
19-10-2014	ABSDATA	20	13	35
	INDX	40	24	40

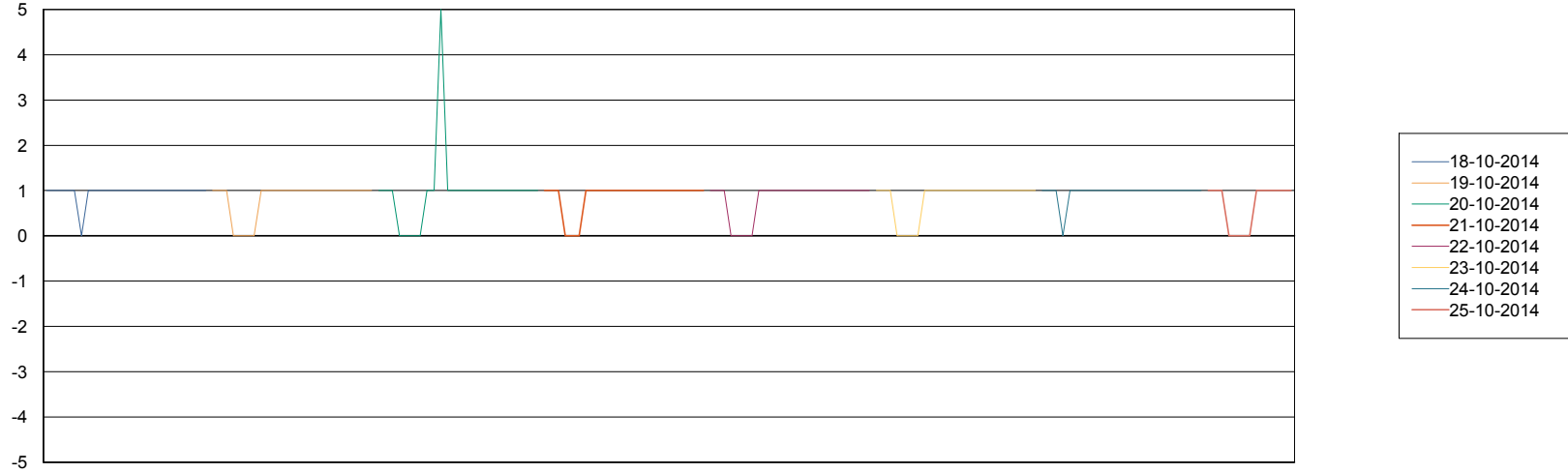
Weekly SLA Customer Report

Customer LLG_Production
Database ID 53



=====
STANDBY DATABASE HEALTH LLG_Production
=====

Recovery lag for last 7 days



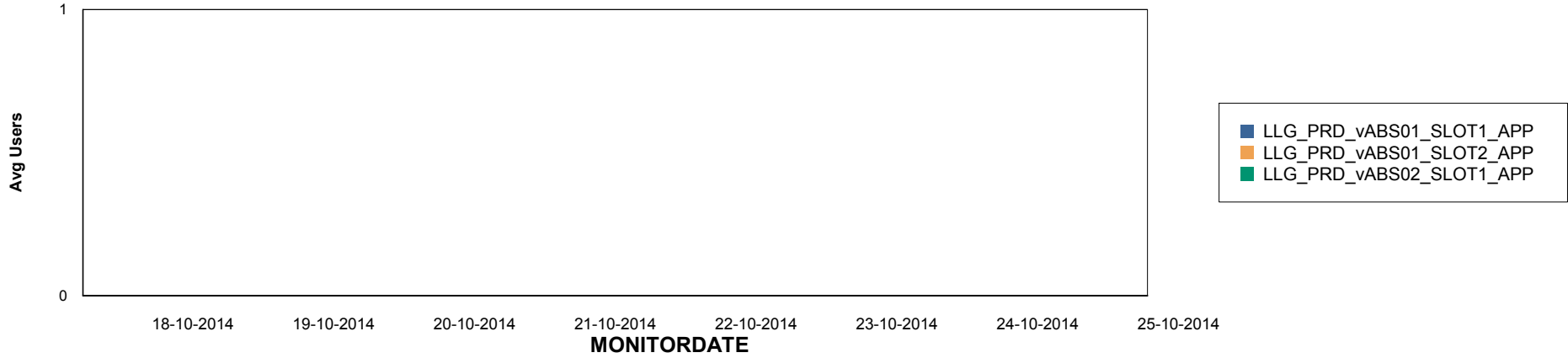
Weekly SLA Customer Report

Customer LLG_Production
Database ID 53

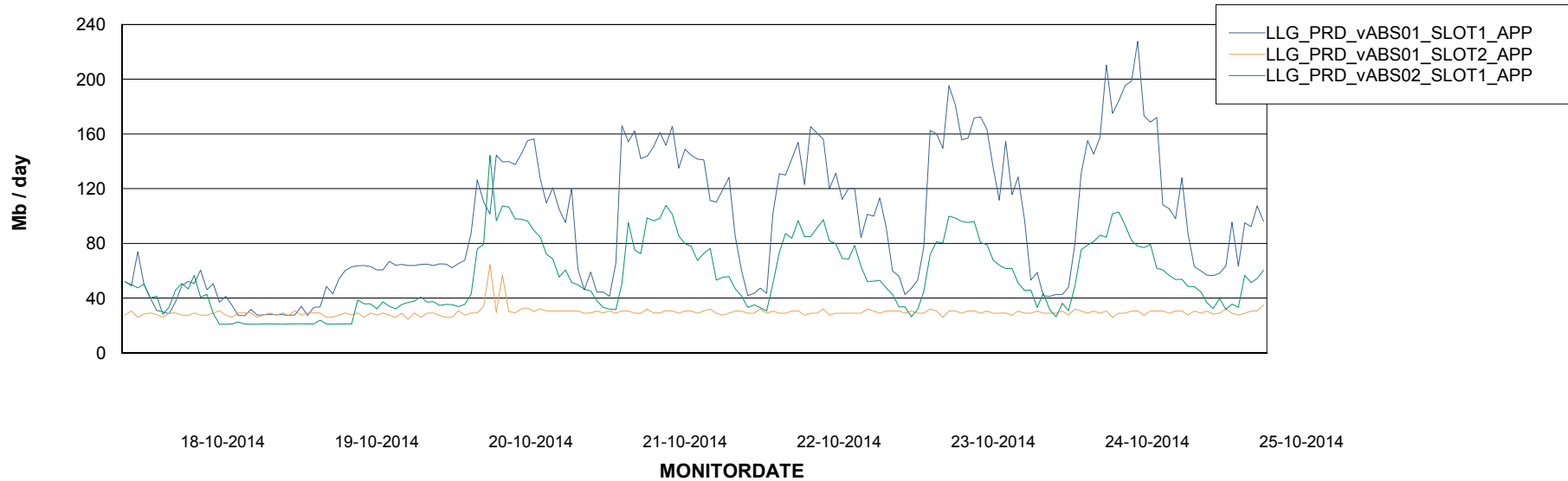


ABSolute Application Server Services

Disaster per ABS Server



Avg memory used per ABS Server Service



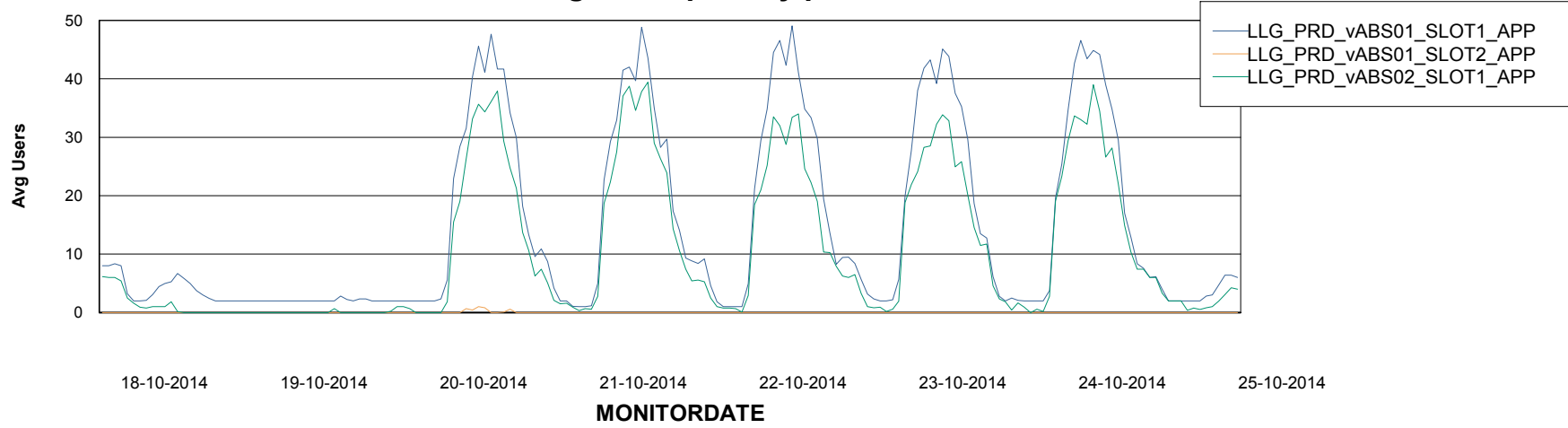
Weekly SLA Customer Report

Customer LLG_Production
Database ID 53



=====
ABSolute Application Server Services
=====

Avg users per day per ABS server



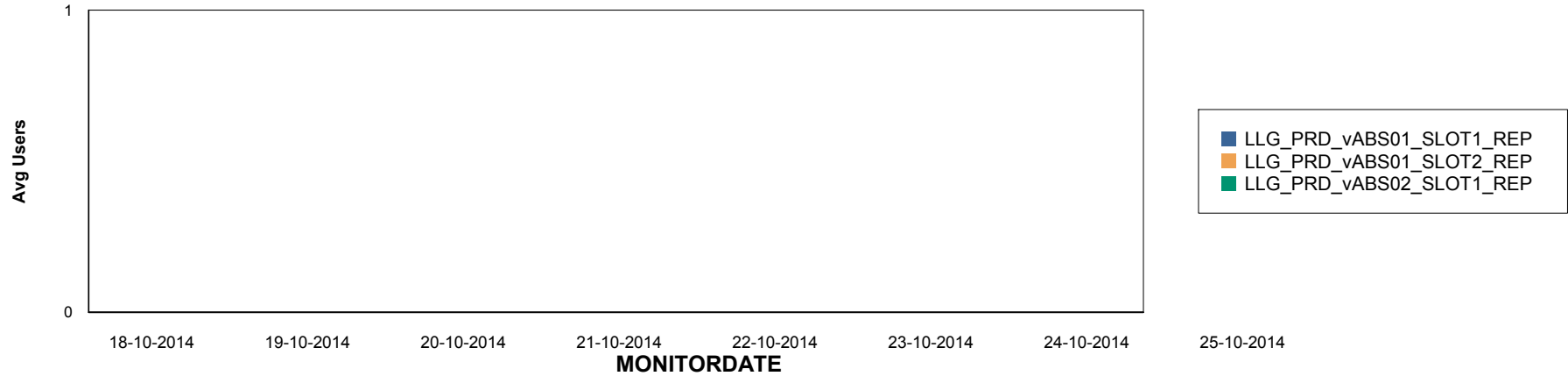
Weekly SLA Customer Report

Customer LLG_Production
Database ID 53

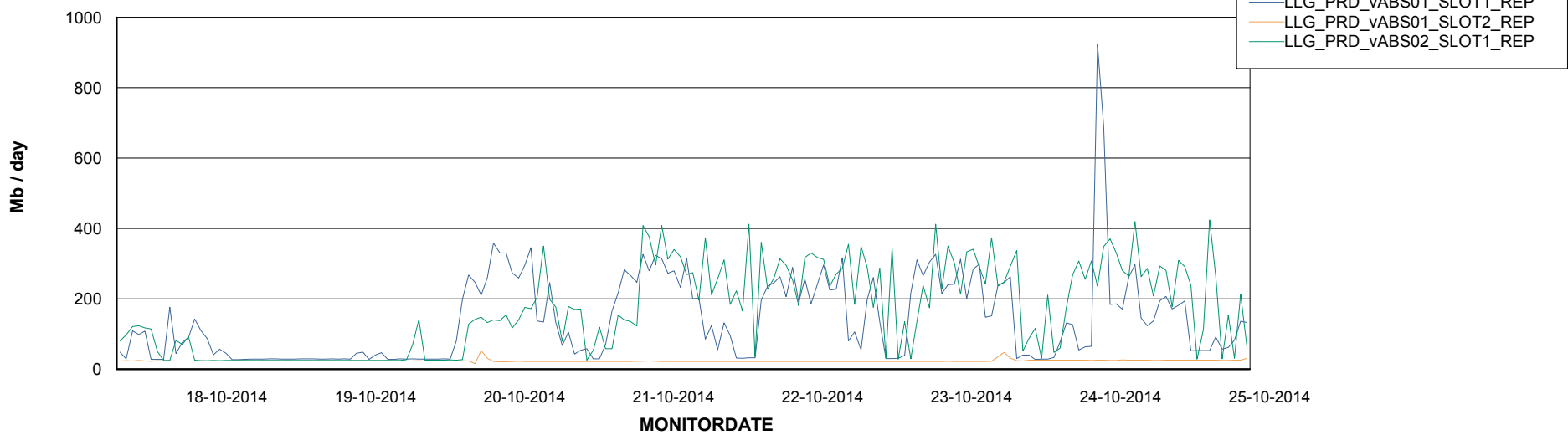


=====
ABSolute Application ReportServer Services
=====

Disaster per ReportServer



Avg memory used per ReportServer Service



Weekly SLA Customer Report

Customer LLG_Production
Database ID 53



Disaster per ABS component

