

Weekly SLA Customer Report

Customer JWR Production
Database ID 43



=====
HARDDISK USAGE JWR_PRD_JWR-ABS-01
=====

	Used disk space on / (GB)	Total disk space on / (GB)	Free disk space on / (GB)
25-10-2014	27	49	20
24-10-2014	27	49	20
23-10-2014	27	49	20
22-10-2014	27	49	20
21-10-2014	27	49	20
20-10-2014	27	49	20
19-10-2014	27	49	20

=====
HARDDISK USAGE JWR_PRD_JWR-ABS-02
=====

	Used disk space on / (GB)	Total disk space on / (GB)	Free disk space on / (GB)
25-10-2014	25	49	21
24-10-2014	25	49	21
23-10-2014	25	49	21
22-10-2014	25	49	21
21-10-2014	25	49	21
20-10-2014	25	49	21
19-10-2014	25	49	21

Weekly SLA Customer Report

Customer JWR Production
 Database ID 43



=====

HARDDISK USAGE JWR_PRD_JWR-ODB-01

=====

	Used disk space on / (GB)	Total disk space on / (GB)	Free disk space on / (GB)
25-10-2014	74	90	11
24-10-2014	74	90	11
23-10-2014	74	90	11
22-10-2014	74	90	11
21-10-2014	74	90	11
20-10-2014	75	90	11
19-10-2014	74	90	12

=====

HARDDISK USAGE JWR_PRD_JWR-ODB-02

=====

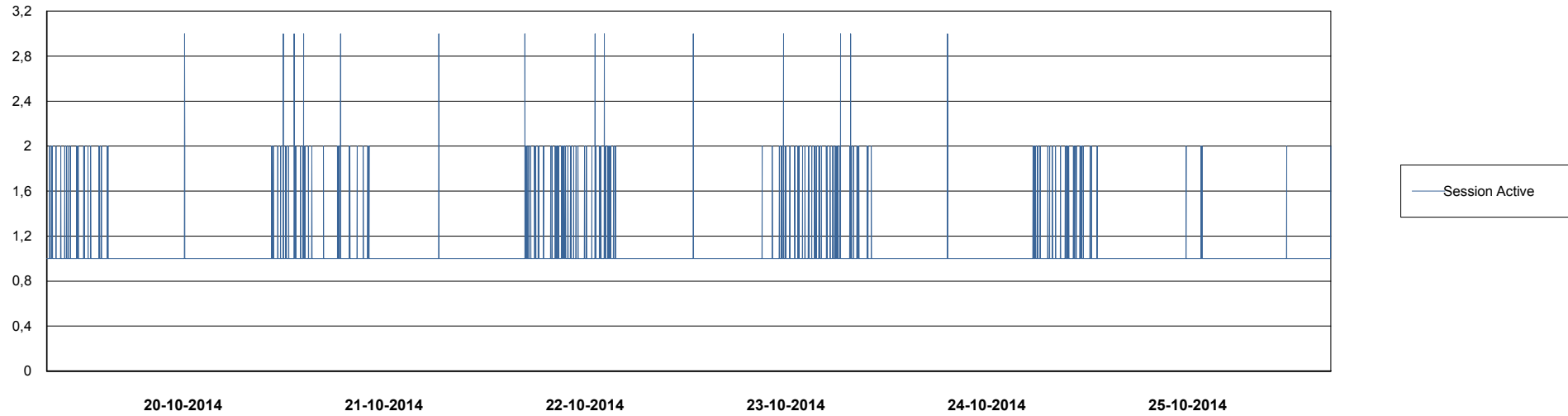
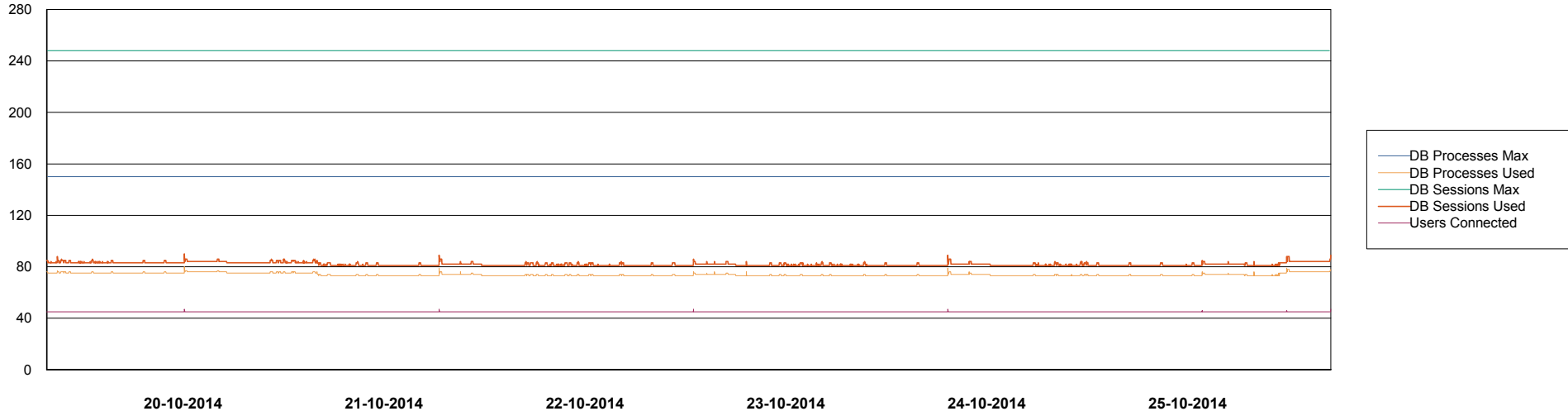
	Used disk space on / (GB)	Total disk space on / (GB)	Free disk space on / (GB)
25-10-2014	91	138	40
24-10-2014	91	138	39
23-10-2014	91	138	39
22-10-2014	91	138	39
21-10-2014	91	138	39
20-10-2014	92	138	39
19-10-2014	91	138	40

Weekly SLA Customer Report

Customer JWR Production
Database ID 43



DATABASE PERFORMANCE JWRDB_Production



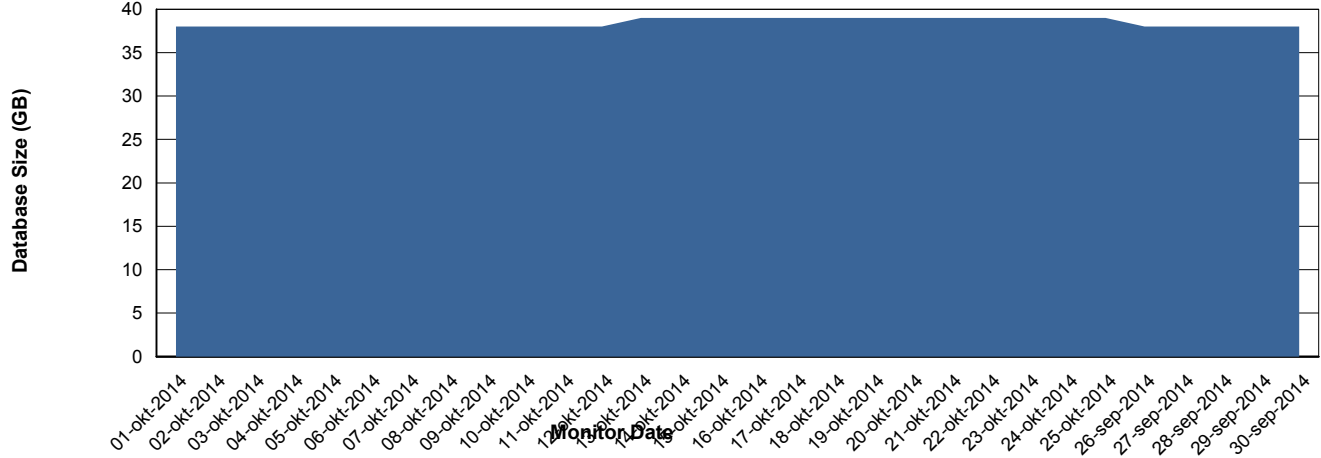
Weekly SLA Customer Report

Customer JWR Production
 Database ID 43



=====
 DATABASE SIZE JWRDB_Production
 =====

Database growth over last month



=====
 DATABASE TABLESPACES JWRDB_Production
 =====

TOTAL DATABASE SIZE PER TABLESPACE

Date	Tablespace Name	Filesize (Gb)	Usedsize (Gb)	Percentage free
25-10-2014	ABSDATA	15	11	27
	INDX	32	27	16
24-10-2014	ABSDATA	15	11	27
	INDX	32	27	16
23-10-2014	ABSDATA	15	11	27
	INDX	32	27	16
22-10-2014	ABSDATA	15	11	27
	INDX	32	27	16
21-10-2014	ABSDATA	15	11	27
	INDX	32	27	16
20-10-2014	ABSDATA	15	11	27
	INDX	32	27	16
19-10-2014	ABSDATA	15	11	27
	INDX	32	27	16

Weekly SLA Customer Report

Customer JWR Production
Database ID 43



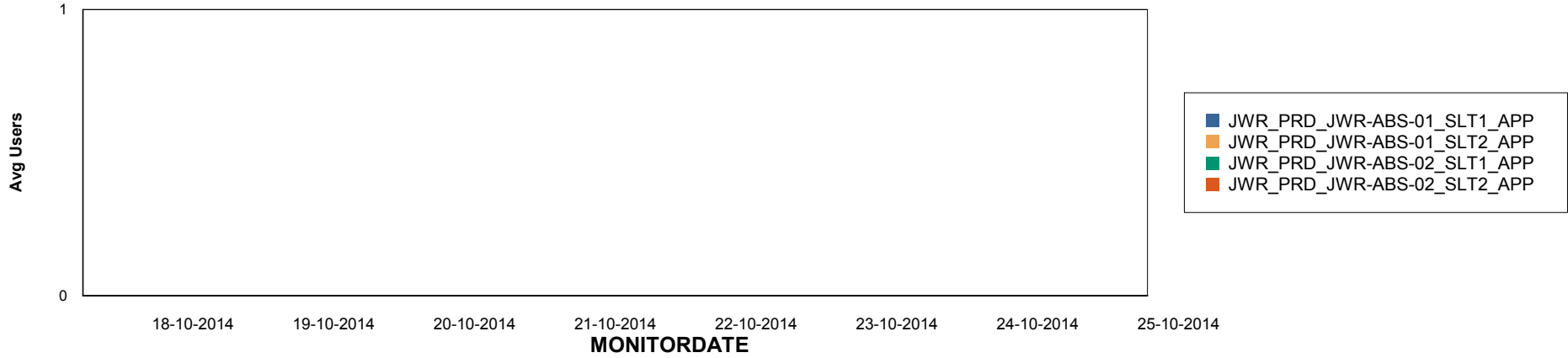
Weekly SLA Customer Report

Customer JWR Production
Database ID 43

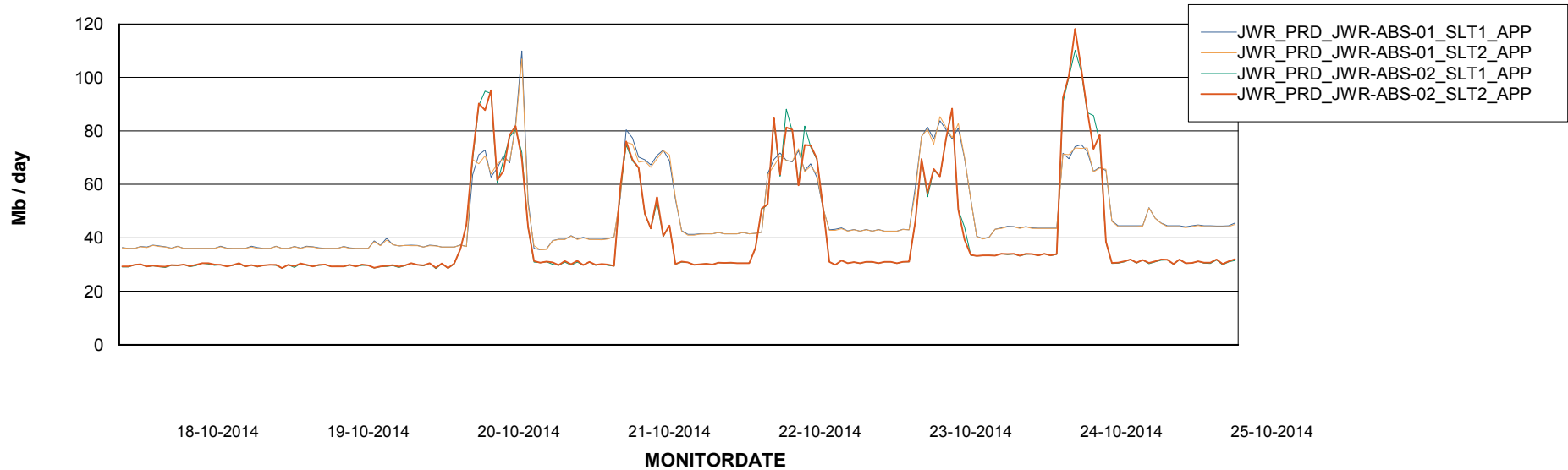


=====
ABSolute Application Server Services
=====

Disaster per ABS Server



Avg memory used per ABS Server Service



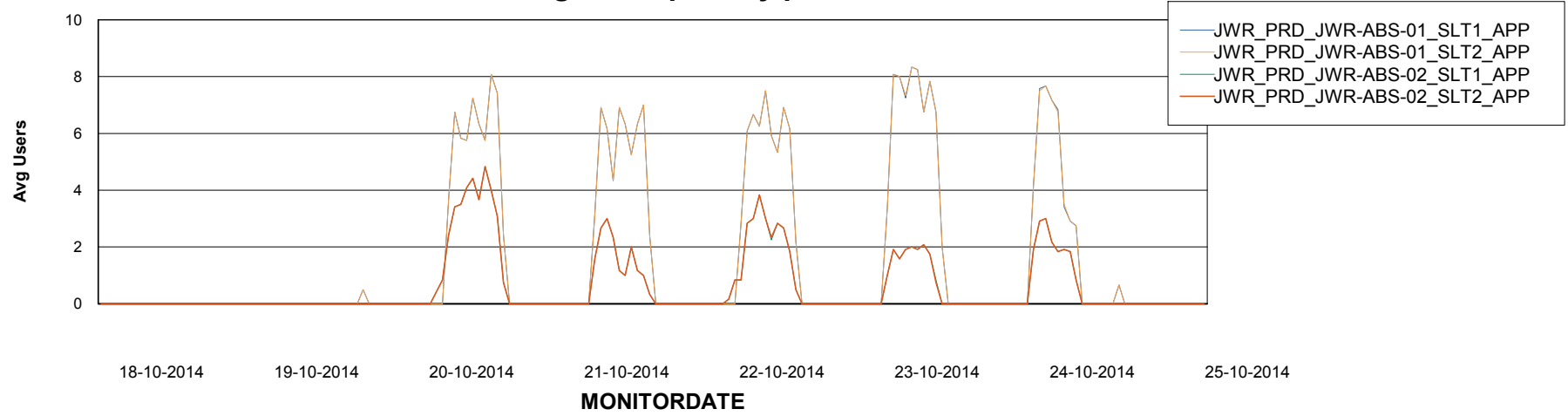
Weekly SLA Customer Report

Customer JWR Production
Database ID 43



=====
ABSolute Application Server Services
=====

Avg users per day per ABS server



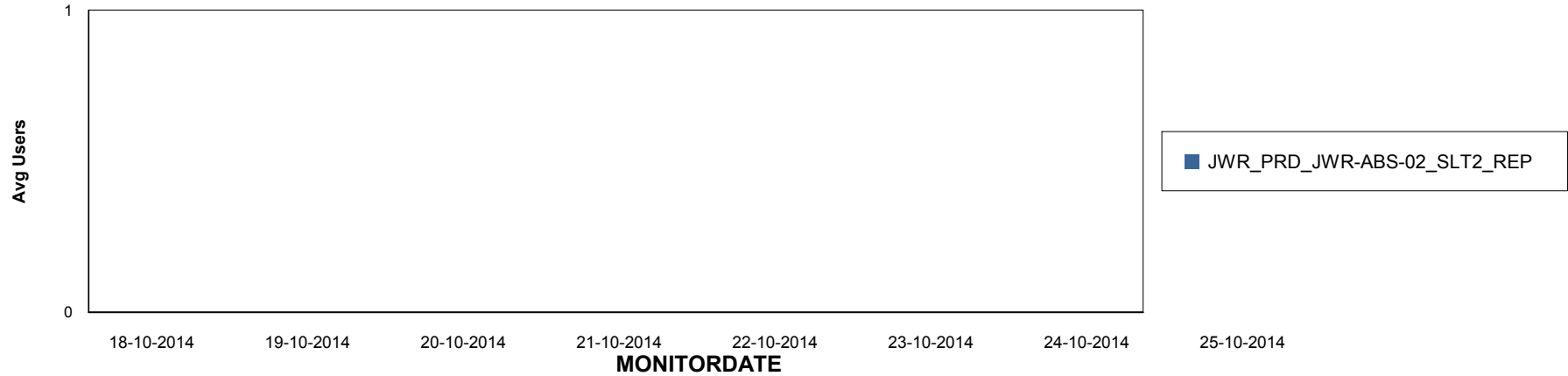
Weekly SLA Customer Report

Customer JWR Production
Database ID 43

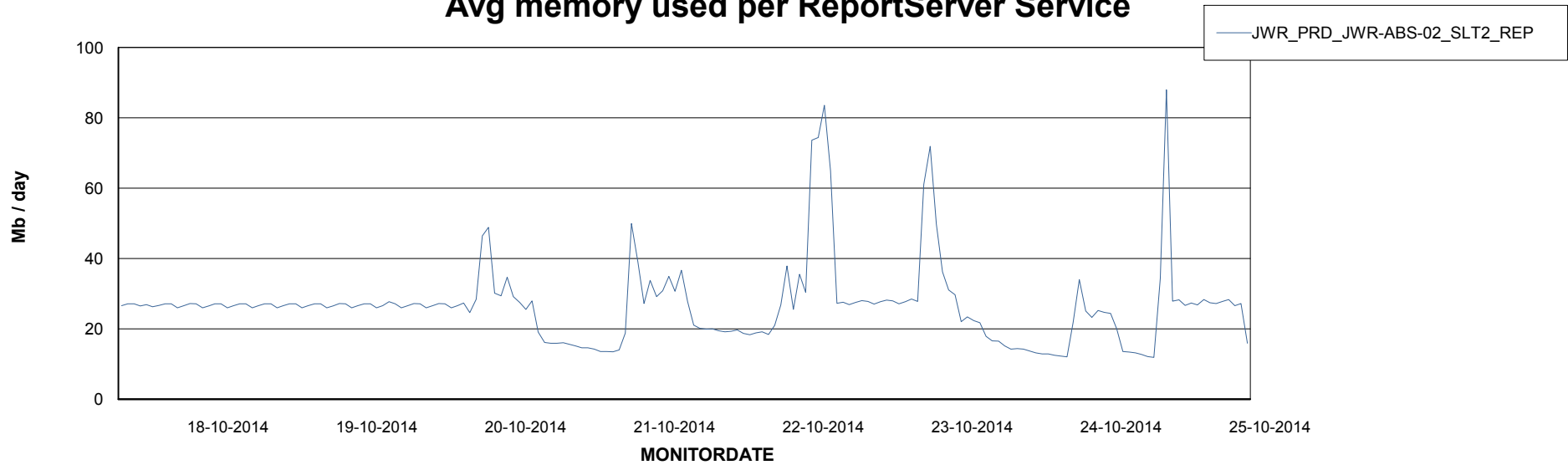


=====
ABSolute Application ReportServer Services
=====

Disaster per ReportServer



Avg memory used per ReportServer Service



Weekly SLA Customer Report

Customer JWR Production
Database ID 43



Disaster per ABS component

