

Weekly SLA Customer Report

Customer CSC_Production
Database ID 50



=====
HARDDISK USAGE CSC_PRD_ABSSRV
=====

	Total disk space on C (GB)	Free disk space on C (GB)	Total disk space on D (GB)	Free disk space on D (GB)	Total disk space on E (GB)	Free disk space on E (GB)
25-10-2014	102	70	220	151	225	73
24-10-2014	102	70	220	151	225	76
23-10-2014	102	70	220	151	225	79
22-10-2014	102	70	220	151	225	82
21-10-2014	102	70	220	151	225	86
20-10-2014	102	70	220	151	225	88
19-10-2014	102	70	220	151	225	88

=====
HARDDISK USAGE CSC_PRD_ABS02
=====

	Total disk space on C (GB)	Free disk space on C (GB)
25-10-2014	80	9
24-10-2014	80	9
23-10-2014	80	9
22-10-2014	80	9
21-10-2014	80	9
20-10-2014	80	9
19-10-2014	80	9

Weekly SLA Customer Report

Customer CSC_Production
Database ID 50



=====
HARDDISK USAGE CSC_PRD_WEBSRV
=====

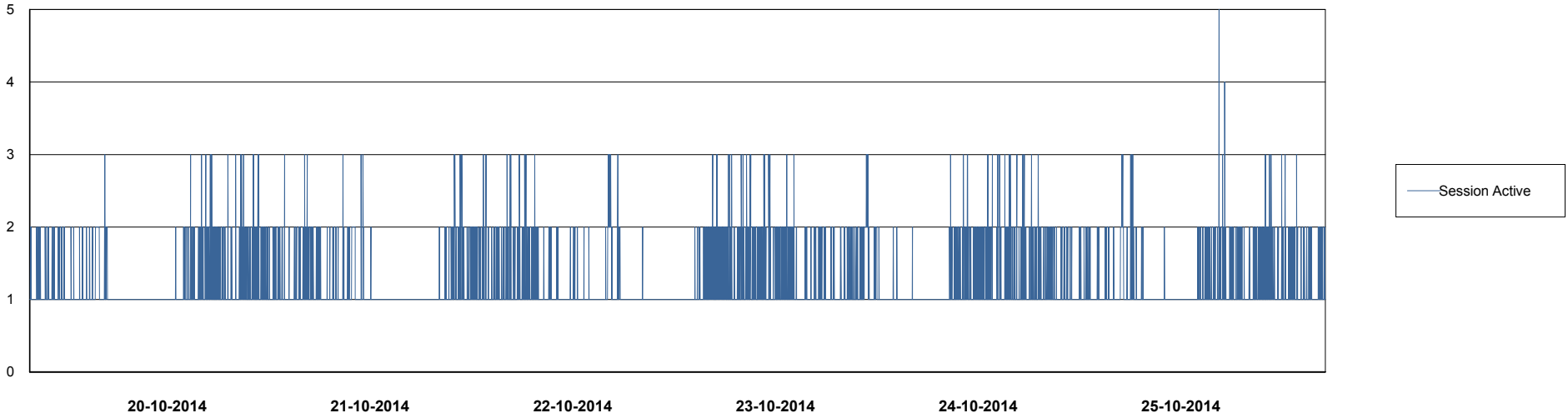
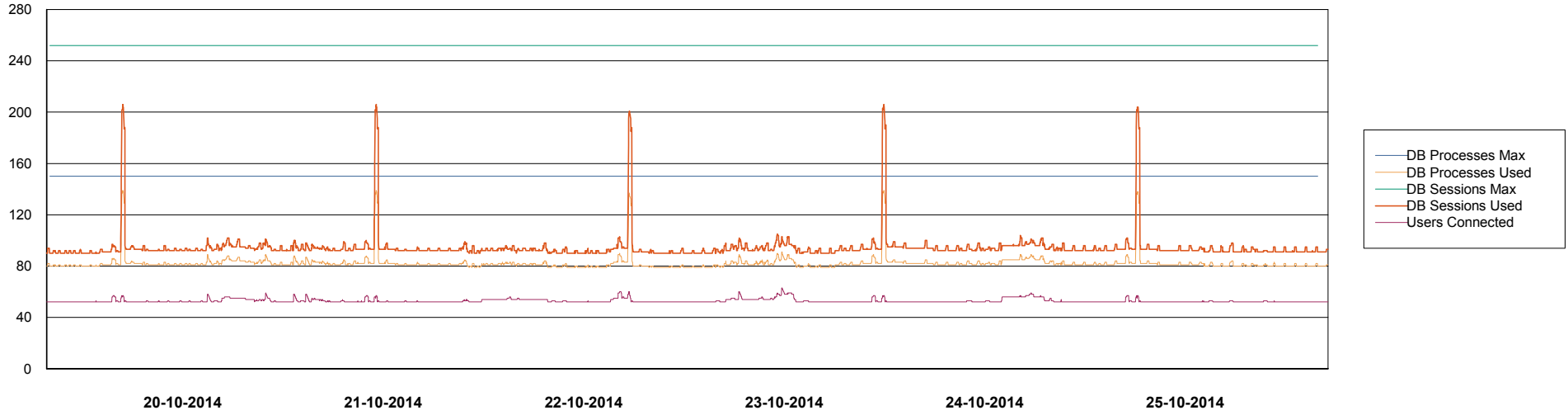
	Used disk space on C (GB)	Total disk space on C (GB)	Free disk space on C (GB)
25-10-2014	35	59	24
24-10-2014	35	59	24
23-10-2014	35	59	24
22-10-2014	35	59	24
21-10-2014	35	59	24
20-10-2014	35	59	24
19-10-2014	35	59	24

Weekly SLA Customer Report

Customer CSC_Production
Database ID 50



DATABASE PERFORMANCE CSCDB_Production

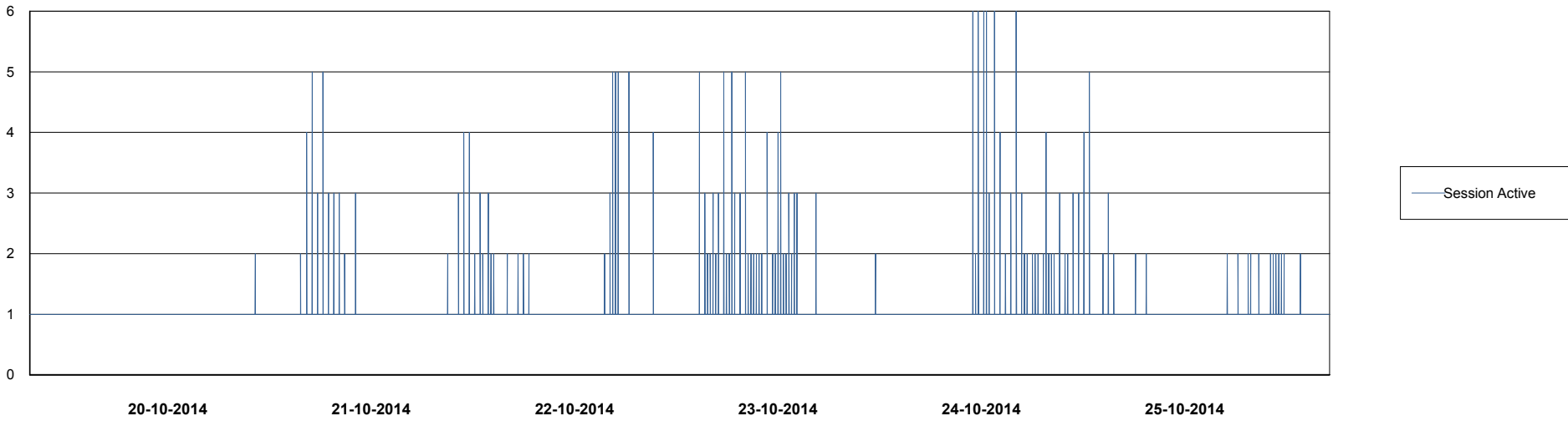
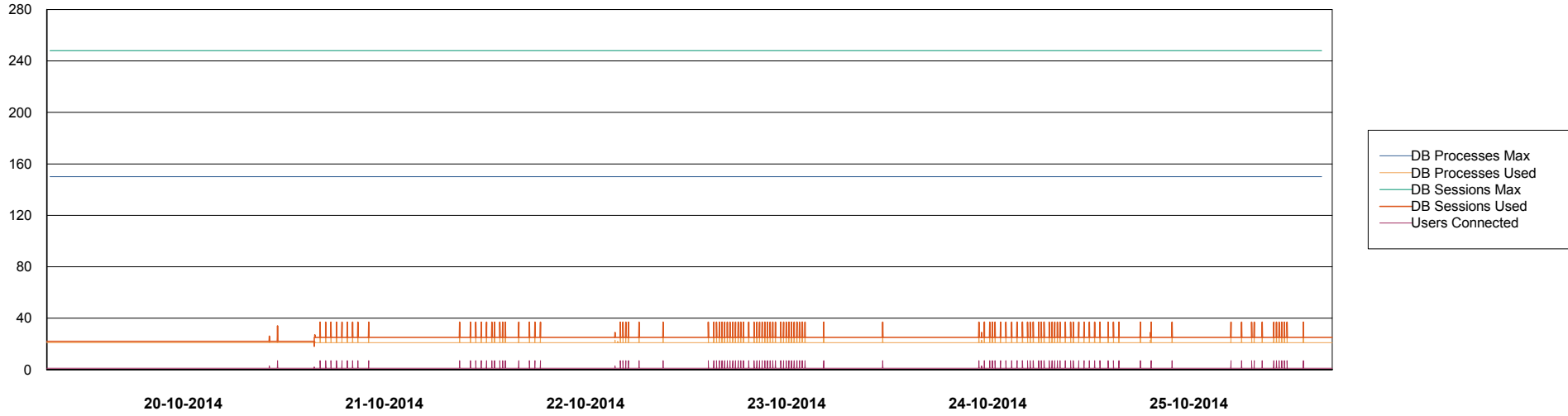


Weekly SLA Customer Report

Customer CSC_Production
Database ID 50



DATABASE PERFORMANCE CSCDB_Standby



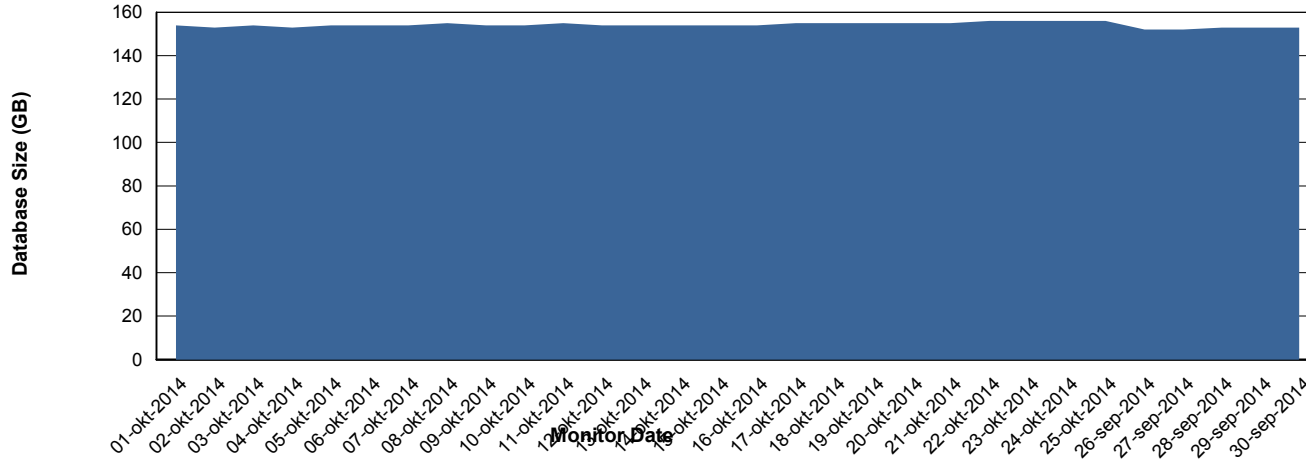
Weekly SLA Customer Report

Customer CSC_Production
 Database ID 50



=====
 DATABASE SIZE CSCDB_Production
 =====

Database growth over last month



=====
 DATABASE TABLESPACES CSCDB_Production
 =====

TOTAL DATABASE SIZE PER TABLESPACE

Date	Tablespace Name	Filesize (Gb)	Usedsize (Gb)	Percentage free
25-10-2014	ABSDATA	51	42	18
	INDX	133	113	15
24-10-2014	ABSDATA	51	42	18
	INDX	133	112	16
23-10-2014	ABSDATA	51	42	18
	INDX	133	112	16
22-10-2014	ABSDATA	51	42	18
	INDX	133	112	16
21-10-2014	ABSDATA	51	42	18
	INDX	133	112	16
20-10-2014	ABSDATA	51	42	18
	INDX	133	112	16
19-10-2014	ABSDATA	51	42	18
	INDX	133	112	16

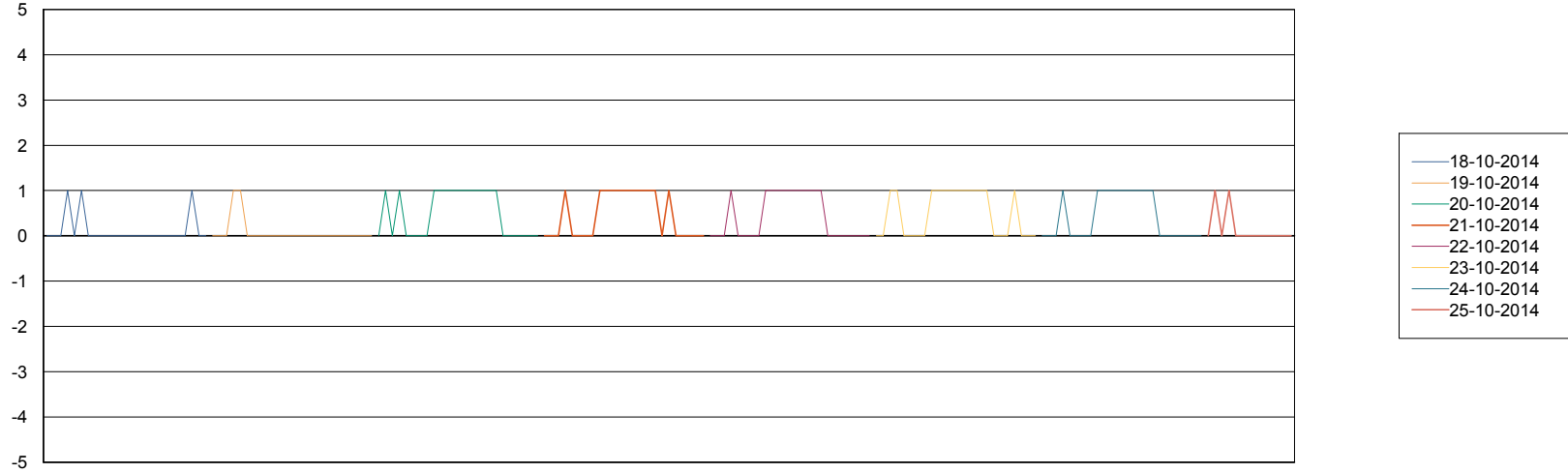
Weekly SLA Customer Report

Customer CSC_Production
Database ID 50



=====
STANDBY DATABASE HEALTH CSC_Production
=====

Recovery lag for last 7 days



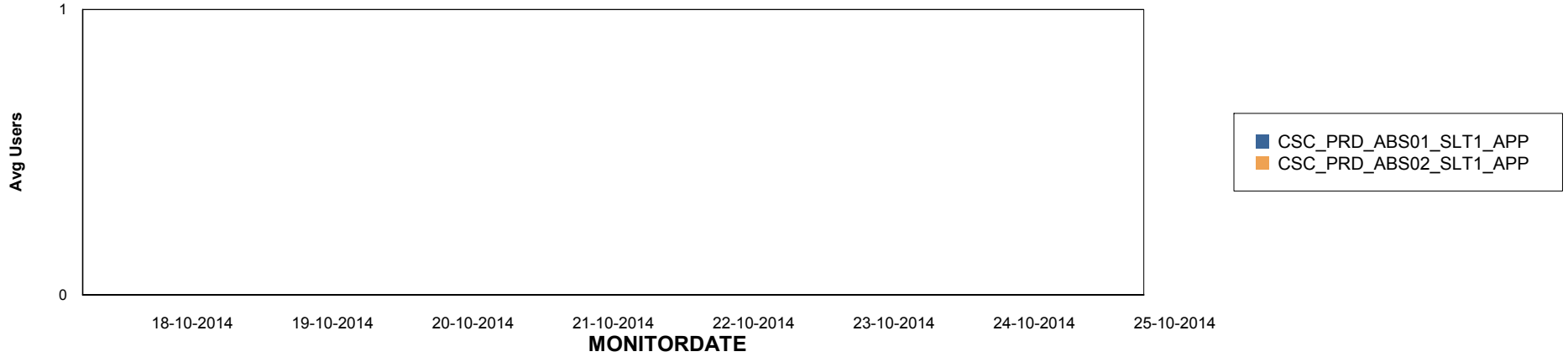
Weekly SLA Customer Report

Customer CSC_Production
Database ID 50

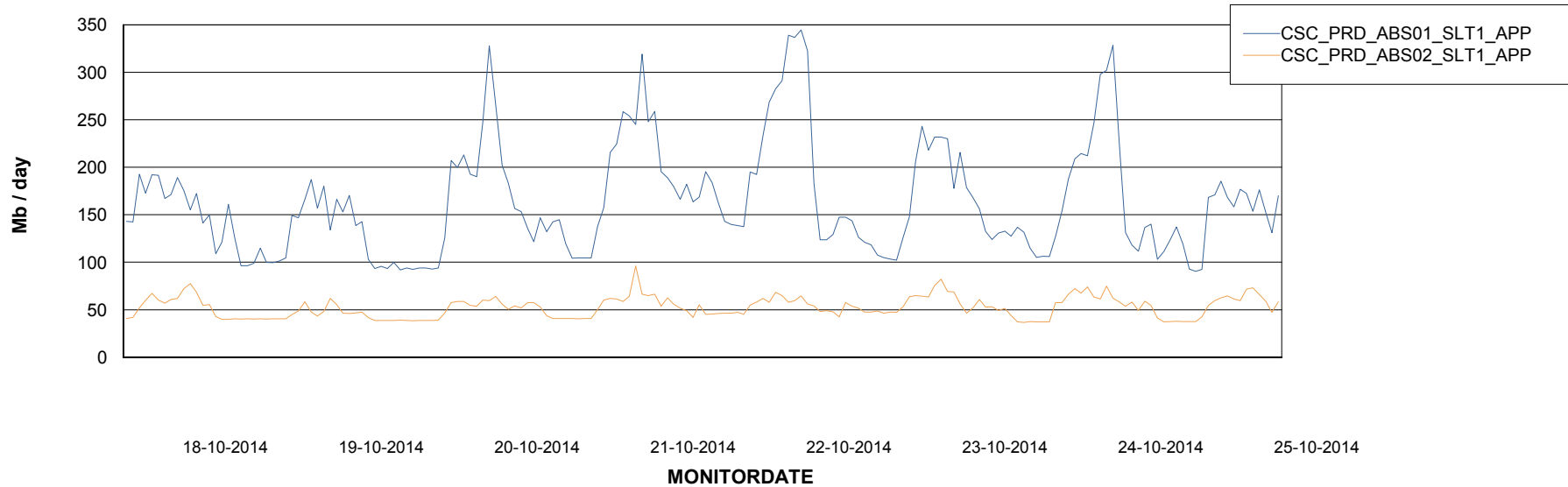


=====
ABSolute Application Server Services
=====

Disaster per ABS Server



Avg memory used per ABS Server Service



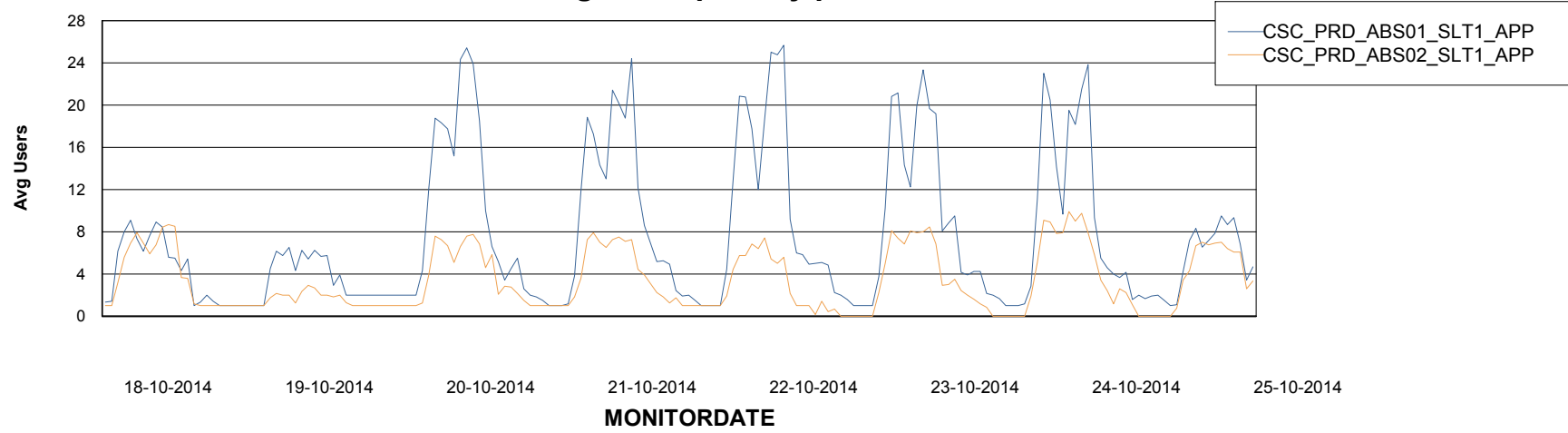
Weekly SLA Customer Report

Customer CSC_Production
Database ID 50



=====
ABSolute Application Server Services
=====

Avg users per day per ABS server



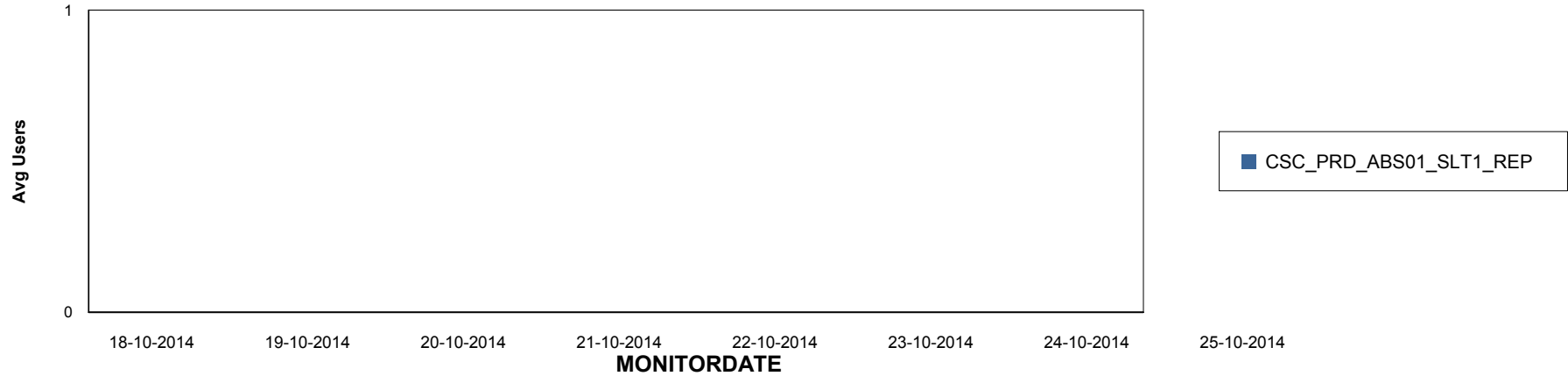
Weekly SLA Customer Report

Customer CSC_Production
Database ID 50

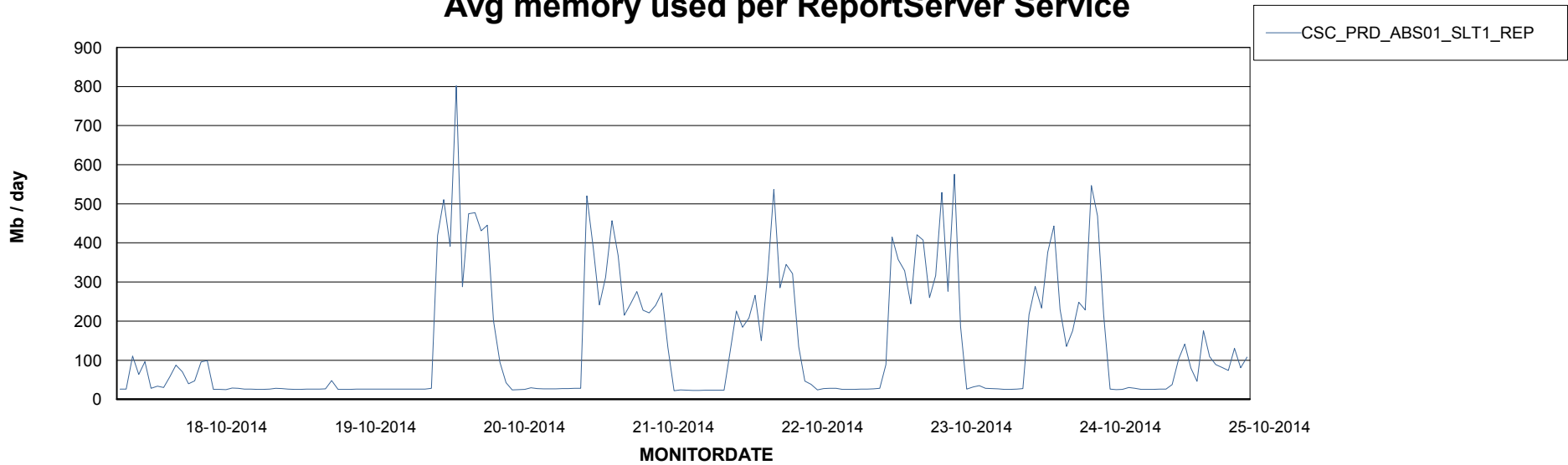


=====
ABSolute Application ReportServer Services
=====

Disaster per ReportServer



Avg memory used per ReportServer Service



Weekly SLA Customer Report

Customer CSC_Production
Database ID 50



Disaster per ABS component

