

Weekly SLA Customer Report

Customer BCH Production
 Database ID 28



=====
 HARDDISK USAGE BCH_PRD_ORCDB1
 =====

	Total disk space on C (GB)	Free disk space on C (GB)	Total disk space on D (GB)	Free disk space on D (GB)
25-10-2014	278	159	278	77
24-10-2014	278	160	278	79
23-10-2014	278	160	278	82
22-10-2014	278	160	278	85
21-10-2014	278	161	278	90
20-10-2014	278	161	278	72
19-10-2014	278	161	278	46

=====
 HARDDISK USAGE BCH_PRD_ORCDB2
 =====

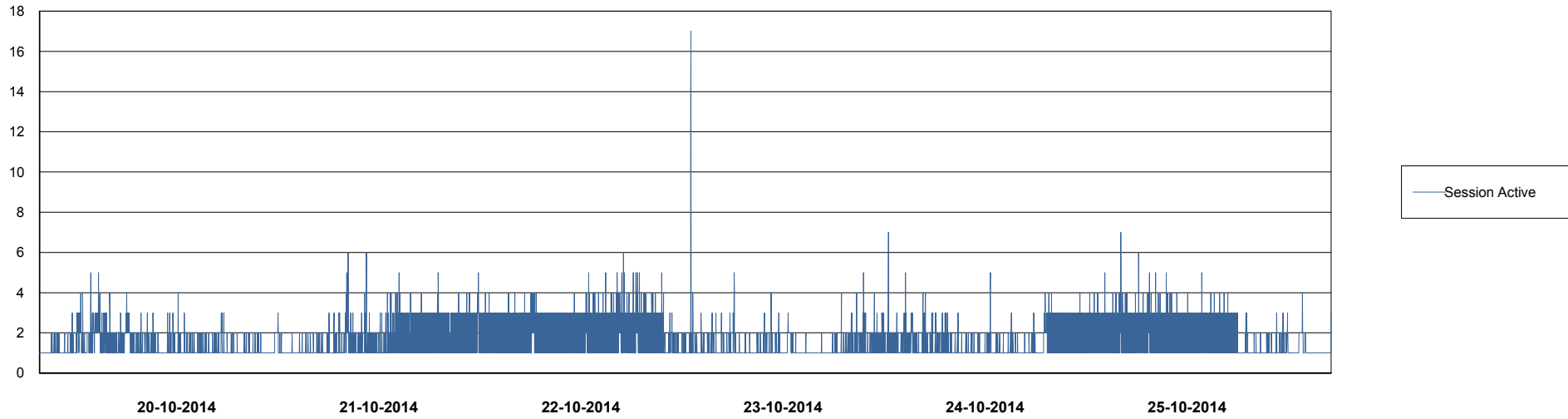
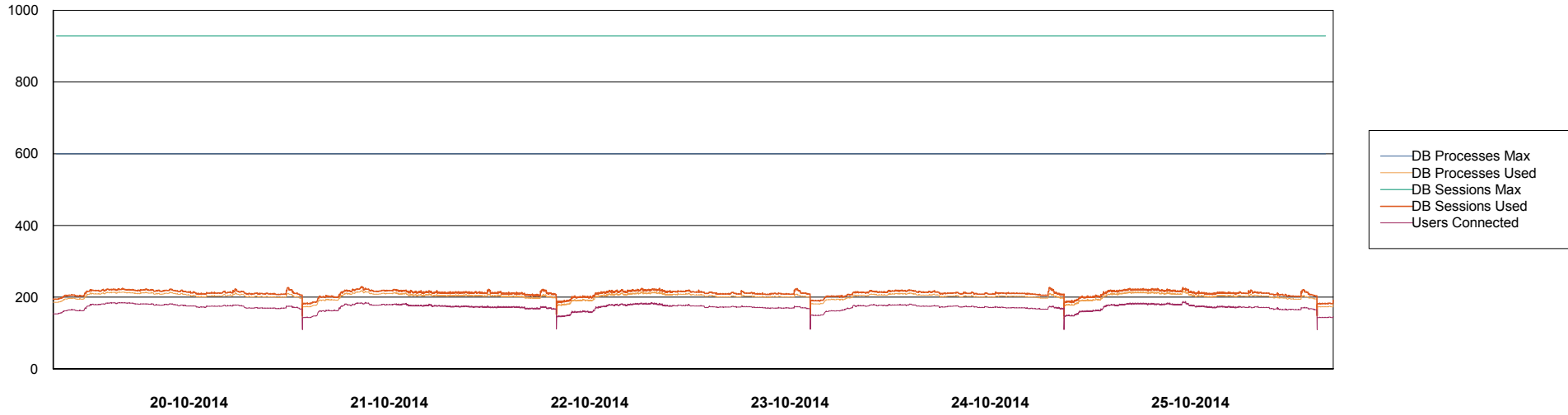
	Total disk space on C (GB)	Free disk space on C (GB)	Total disk space on D (GB)	Free disk space on D (GB)
25-10-2014	278	190	278	74
24-10-2014	278	190	278	76
23-10-2014	278	190	278	79
22-10-2014	278	190	278	82
21-10-2014	278	191	278	87
20-10-2014	278	191	278	69
19-10-2014	278	191	278	43

Weekly SLA Customer Report

Customer BCH Production
Database ID 28



DATABASE PERFORMANCE BCHDB_Production

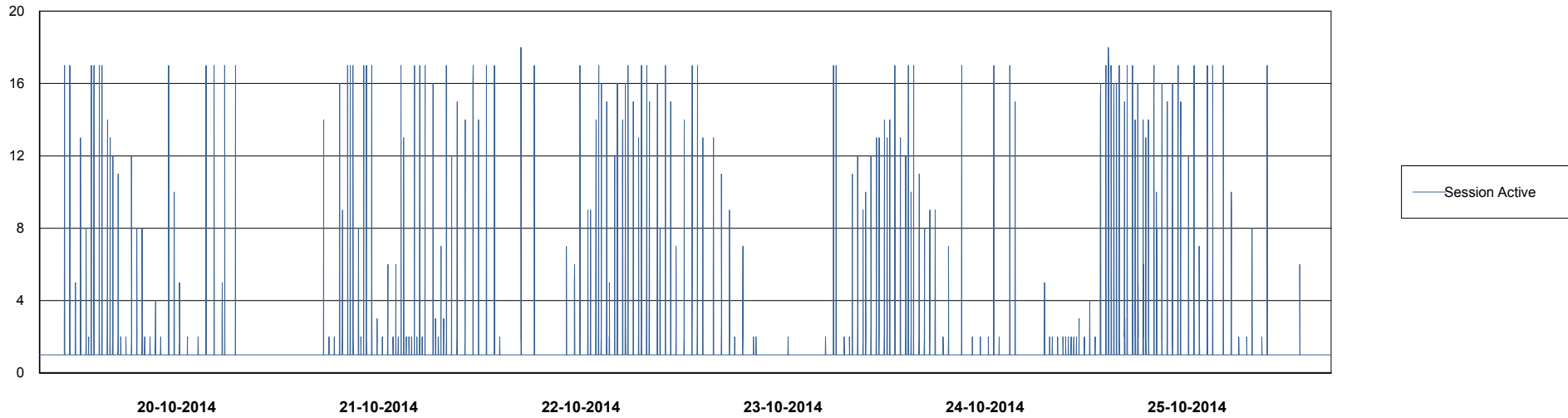
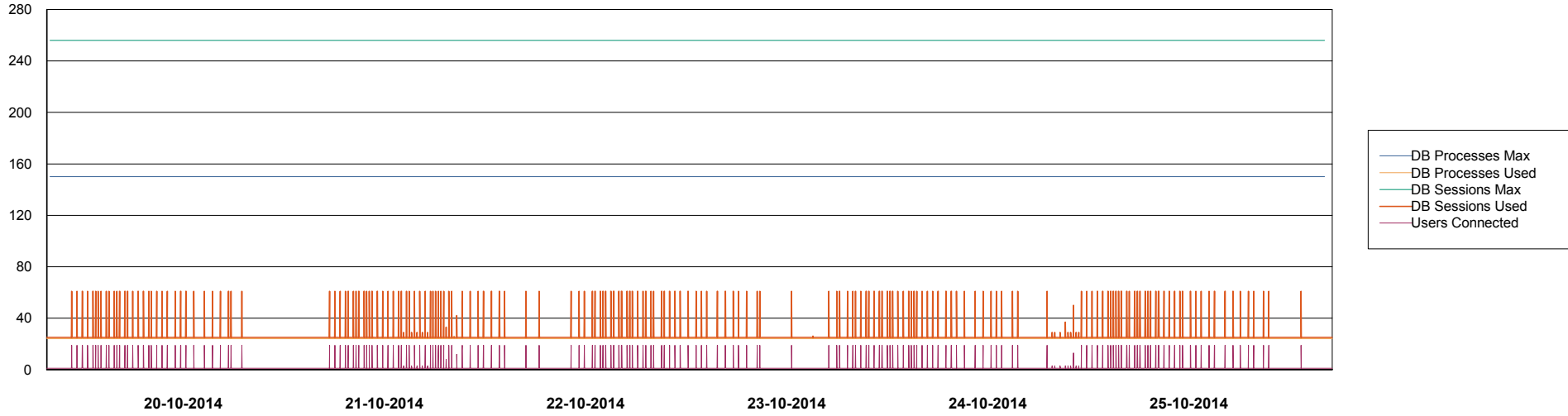


Weekly SLA Customer Report

Customer BCH Production
Database ID 28



DATABASE PERFORMANCE BCHDB_Standby



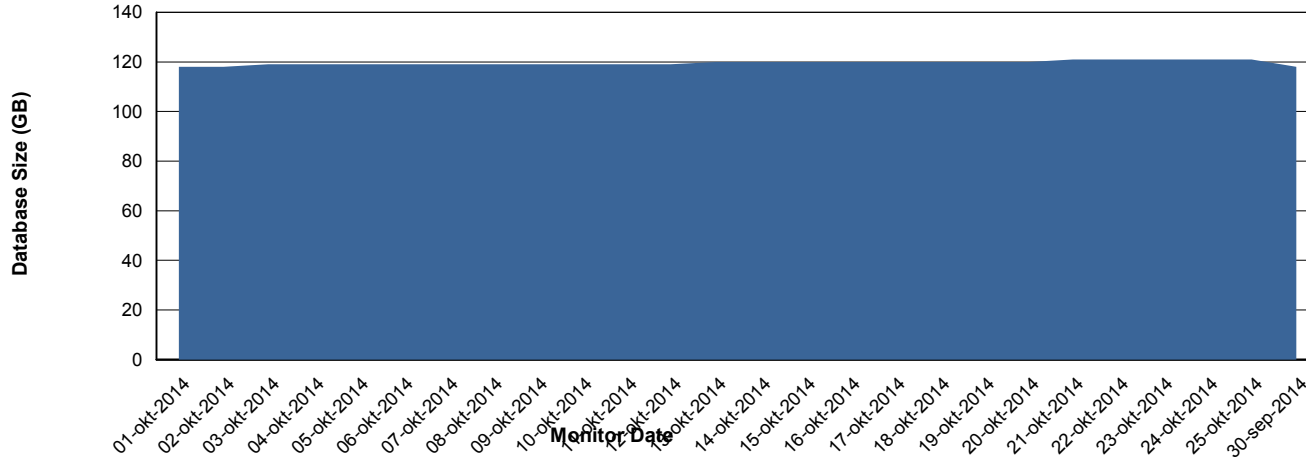
Weekly SLA Customer Report

Customer BCH Production
 Database ID 28



=====
 DATABASE SIZE BCHDB_Production
 =====

Database growth over last month



=====
 DATABASE TABLESPACES BCHDB_Production
 =====

TOTAL DATABASE SIZE PER TABLESPACE

Date	Tablespace Name	Filesize (Gb)	Usedsize (Gb)	Percentage free
25-10-2014	ABSDATA	27	23	15
	INDX	114	96	16
24-10-2014	ABSDATA	27	23	15
	INDX	114	96	16
23-10-2014	ABSDATA	27	23	15
	INDX	114	96	16
22-10-2014	ABSDATA	27	23	15
	INDX	114	96	16
21-10-2014	ABSDATA	27	23	15
	INDX	114	96	16
20-10-2014	ABSDATA	27	23	15
	INDX	111	96	14
19-10-2014	ABSDATA	27	23	15
	INDX	111	96	14

Weekly SLA Customer Report

Customer BCH Production
Database ID 28



=====
STANDBY DATABASE HEALTH BCH Production
=====

Recovery lag for last 7 days

